

V&V Reference Report

L2 ASCDS Version : 8.4.4

Observation 9579 - L2 Version 2
Chandra X-Ray Center

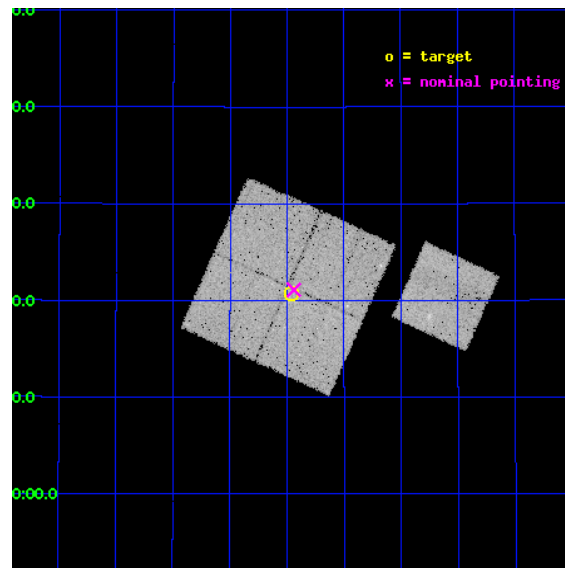
L2 Processing Date : Apr 30 2012

Contents

1	Front	2
2	OBI	3
2.1	OBI	3
2.1.1	Images	3
2.1.2	Bias	3
2.1.3	Parameters	4
2.1.4	Events	4
2.2	Compared Parameters	5
2.3	Aspect	6
2.4	Star Slots	9
2.4.1	Slot 3	9
2.4.2	Slot 4	10
2.4.3	Slot 5	11
2.4.4	Slot 6	12
2.4.5	Slot 7	13
2.5	FID Slots	14
2.5.1	Slot 0	14
2.5.2	Slot 1	15
2.5.3	Slot 2	16
A	Summary	17
A.1	Status	17
A.2	Comments	17

1 Front

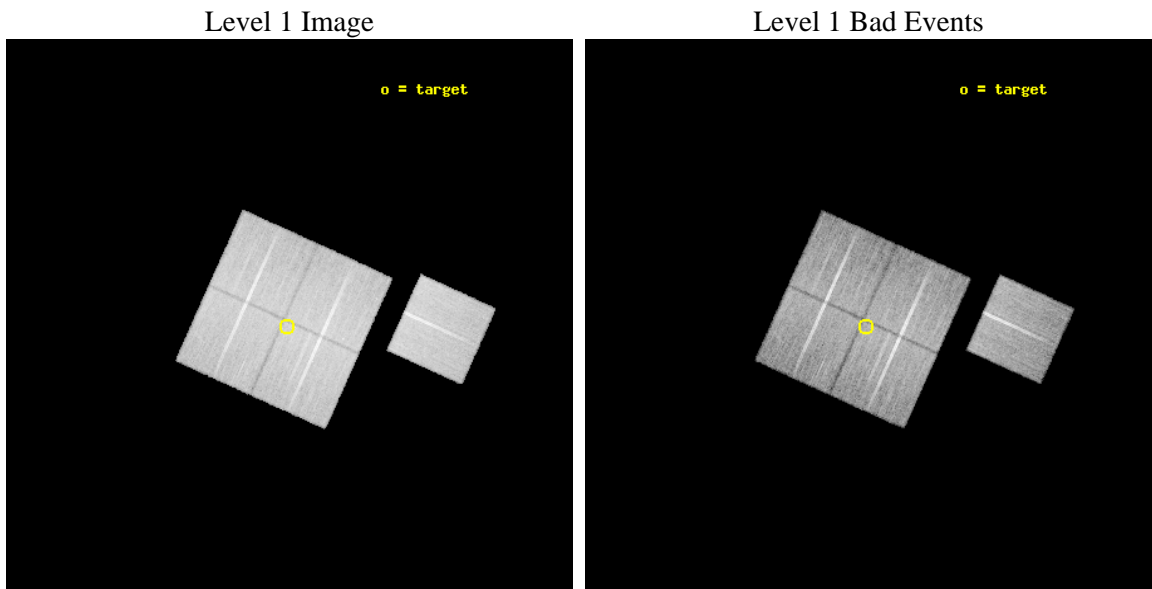
seq_num	501009	Sequence number
obs_id	9579	Observation id
title	A radio and X-ray study of Type Ic SN2007gr at < 10 Mpc	Proposal t
observer	Prof Alicia Soderberg	Principal investigator
object	SN2007gr	Source name
dtcycle	0	
cycle	P	events from which exps? Prim/Second/Both
ra_targ	40.866667	Observer's specified target RA [deg]
dec_targ	37.34575	Observer's specified target Dec [deg]
ra_nom	40.859913666112	Nominal RA [deg]
dec_nom	37.351816293714	Nominal Dec [deg]
roll_nom	114.31066269318	Nominal Roll [deg]
revision	2	Processing version of data
ontime	19709.759161413	Sum of GTIs [s]
livetime	19452.236647855	Livetime [s]
ontime0	19709.759191275	Sum of GTIs [s]
ontime1	19709.759161413	Sum of GTIs [s]
ontime2	19709.759201229	Sum of GTIs [s]
ontime3	19709.759161413	Sum of GTIs [s]
ontime6	19709.759181261	Sum of GTIs [s]
l2events	99979	Number of level 2 events



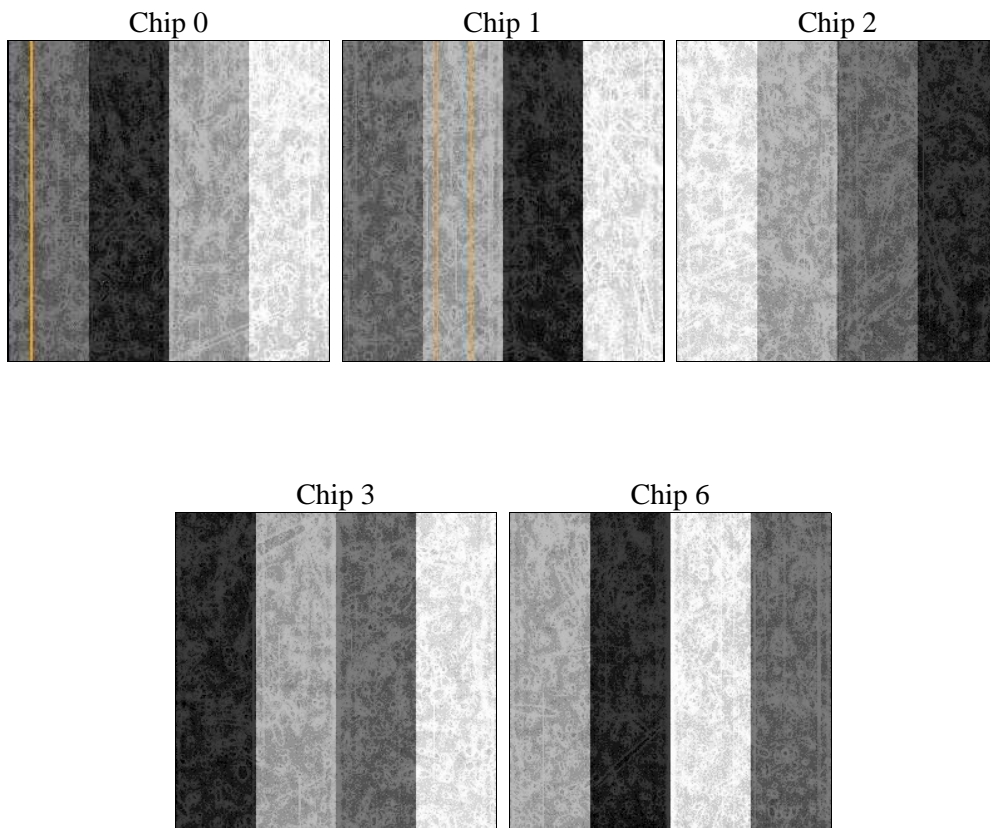
2 OBI

2.1 OBI

2.1.1 Images



2.1.2 Bias



2.1.3 Parameters

obi_num	0	Obi number	sched_exp_time	19549.837000	[s] Scheduled observation exposure time
ascdsver	8.4.4	Processing system revision	ontime	19709.759161413	Sum of GTIs [s]
caldbver	4.4.9	 	ontime0	19709.759191275	Sum of GTIs [s]
date	2012-04-30T02:54:04	Date and time of file creation	ontime1	19709.759161413	Sum of GTIs [s]
revision	2	Processing version of data	ontime2	19709.759201229	Sum of GTIs [s]
			ontime3	19709.759161413	Sum of GTIs [s]
			ontime6	19709.759181261	Sum of GTIs [s]
			l1events	926349	Number of level 1 events

2.1.4 Events

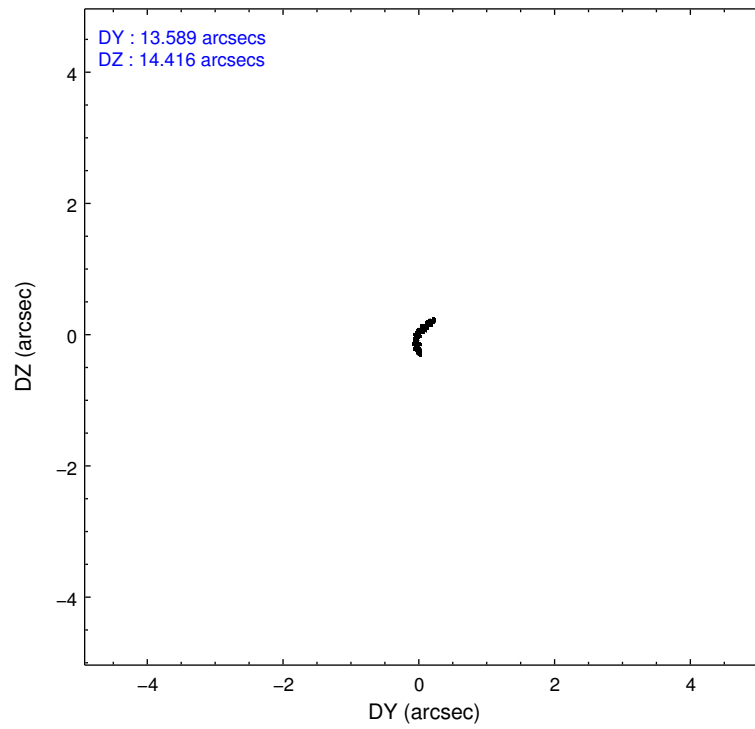
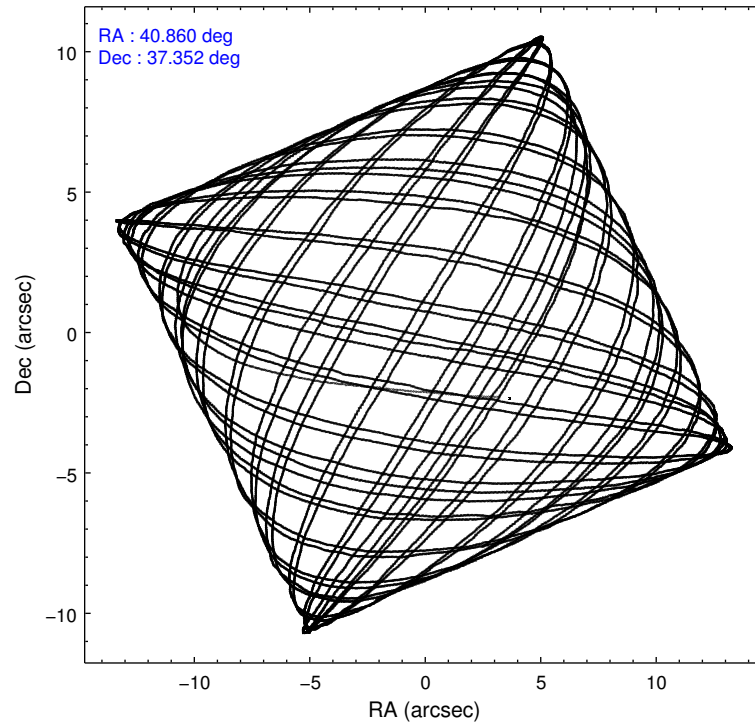
	ccd 0	ccd 1	ccd 2	ccd 3	ccd 6		ccd 0	ccd 1	ccd 2	ccd 3	ccd 6
level 1 events	177524	176634	191845	190754	189592	grade 0 events	9787	9118	10626	10176	8846
rejected events	154642	152861	168592	167718	166830		5%	5%	5%	5%	4%
rejected %	87%	86%	87%	87%	87%	grade 1 events	111	102	133	127	107
							0%	0%	0%	0%	0%
						grade 2 events	5129	5558	4888	4549	4998
							2%	3%	2%	2%	2%
						grade 3 events	2178	2331	2042	2225	2292
							1%	1%	1%	1%	1%
						grade 4 events	2070	2340	2246	2294	2179
							1%	1%	1%	1%	1%
						grade 5 events	7705	8320	7555	8837	8688
							4%	4%	3%	4%	4%
						grade 6 events	4004	4725	3734	4088	4753
							2%	2%	1%	2%	2%
						grade 7 events	146540	144140	160621	158458	157729
							82%	81%	83%	83%	83%

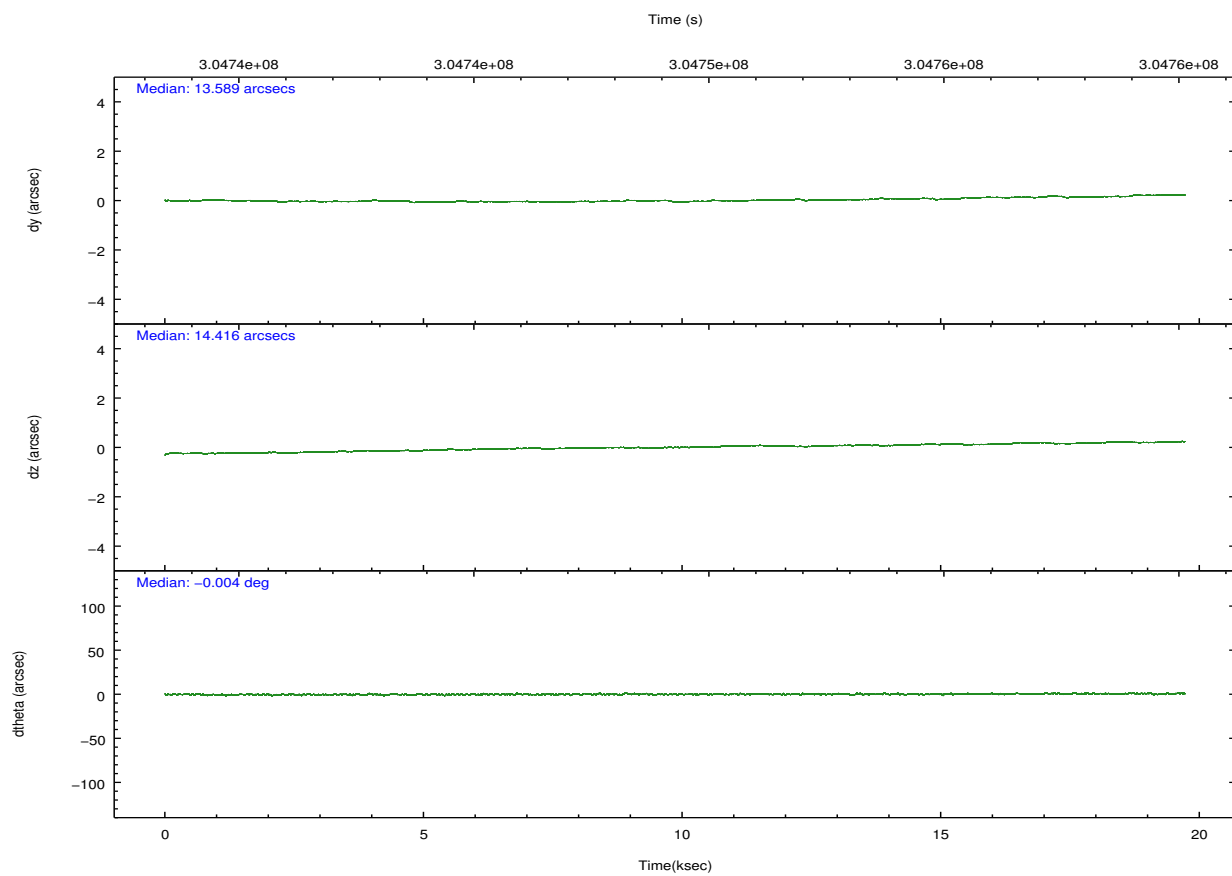
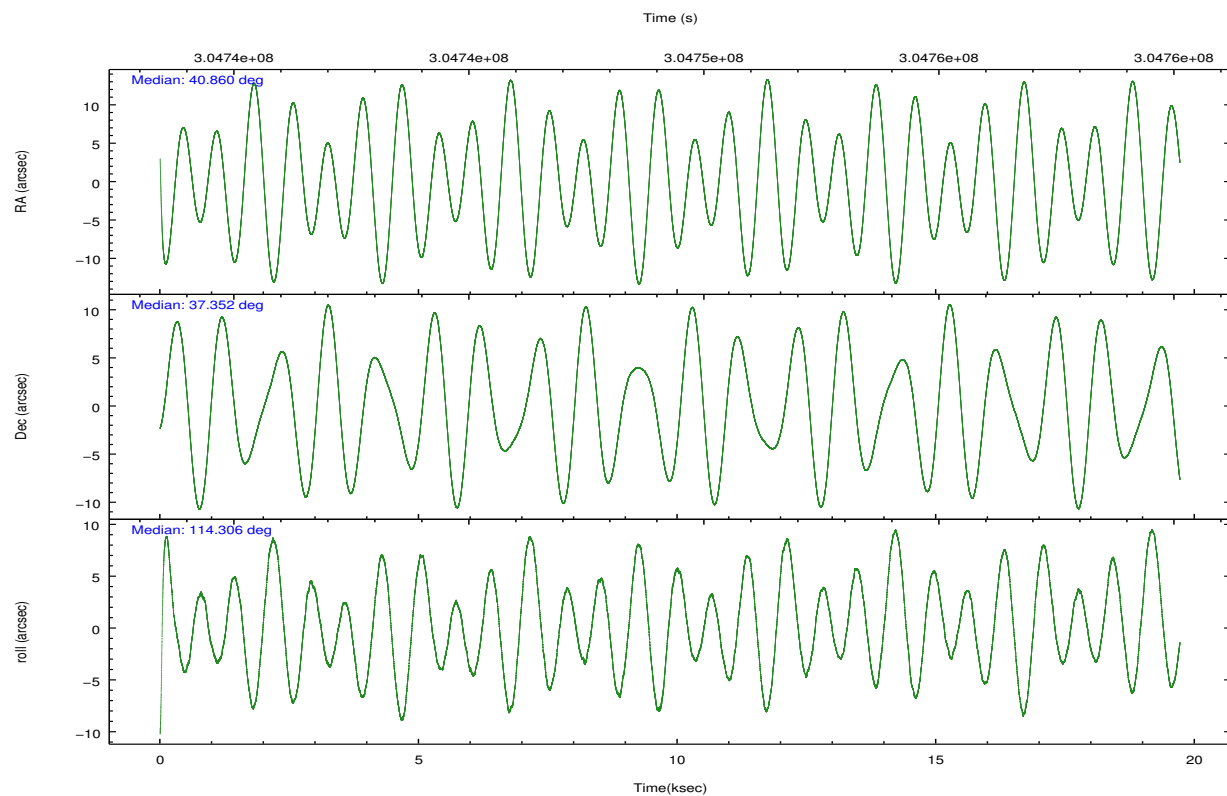
2.2 Compared Parameters

Parameter	Planned	Actual
Instrument	ACIS	ACIS
Detector	ACIS-01236	ACIS-01236
Grating	NONE	NONE
Data mode	VFAINT	VFAINT
Observation mode	POINTING	POINTING
[deg] Pointing RA	40.888093	40.85991366611174
[deg] Pointing Dec	37.335842	37.35181629371387
[deg] Pointing Roll	114.084894	114.3106626931845
[mm] SIM focus pos	-0.782348	-0.7809083437167272
[mm] SIM defocus	0	0.001439871863259334
[mm] SIM translation stage pos	-233.592463	-233.5874344608287
[mm] SIM translation stage offset	0	-0.005018542100998502
[s] Observation start time (MET)	304739597.184000	304738482.5696
Observation start date	2007-08-29T01:52:12	2007-08-29T01:34:42
[s] Observation end time (MET)	304759147.184000	304759378.7331
Observation end date	2007-08-29T07:18:02	2007-08-29T07:22:58
Read mode	TIMED	TIMED

Parameter	Planned	Actual
Obspar format version number	7	7
Obspar file type	PREDICTED	ACTUAL
Obspar update status	NONE	UPDATED
CCD I0 on	Y	Y
CCD I1 on	Y	Y
CCD I2 on	Y	Y
CCD I3 on	Y	Y
CCD S0 on	N	N
CCD S1 on	N	N
CCD S2 on	O1	Y
CCD S3 on	N	N
CCD S4 on	N	N
CCD S5 on	N	N
Number of optional ACIS chips dropped	0	0
On-chip summing requested	N	N
Subarray requested	NONE	NONE
Alternating exposures requested	N	N
[s] Primary exposure time	0.000000	3.1

2.3 Aspect



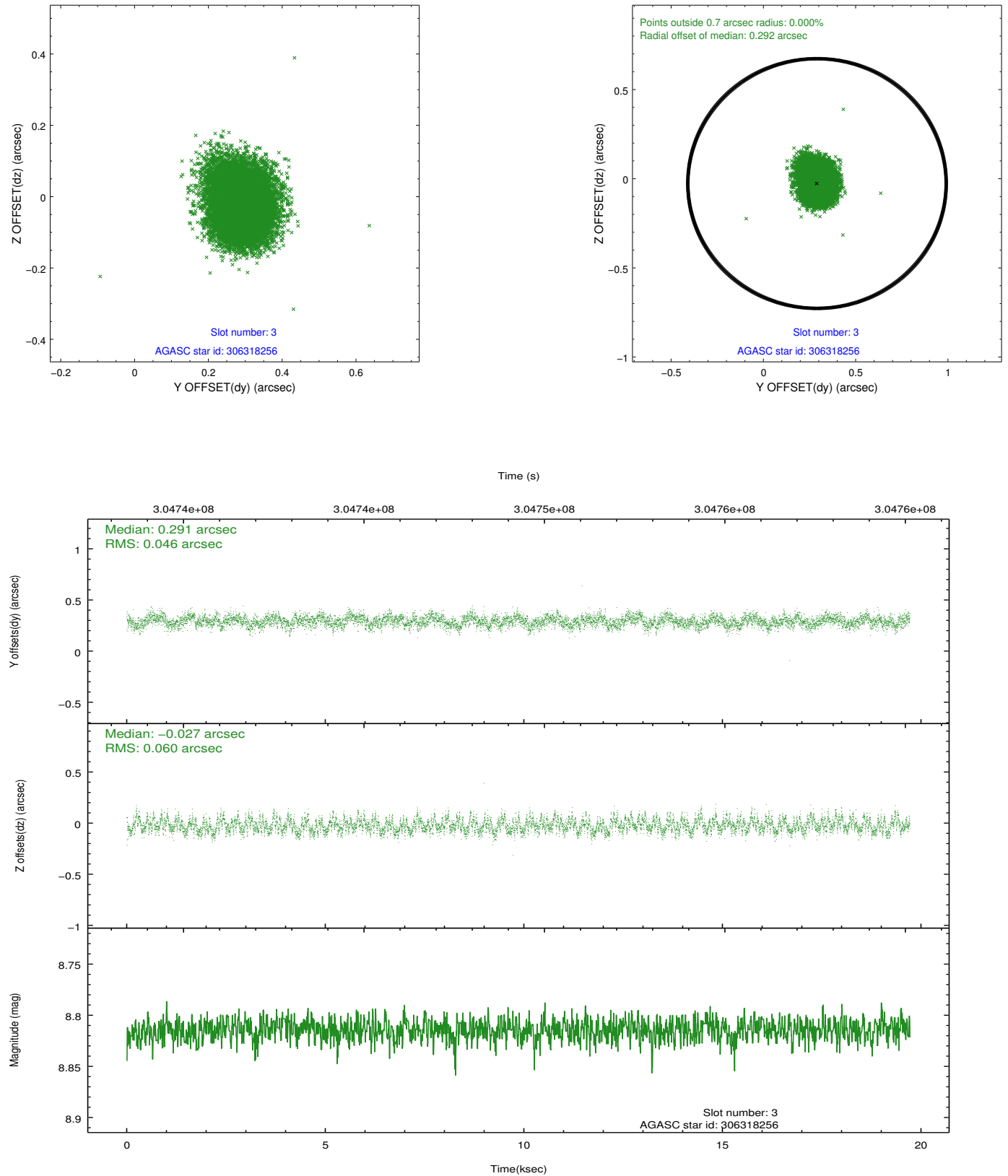


Slot Statistics

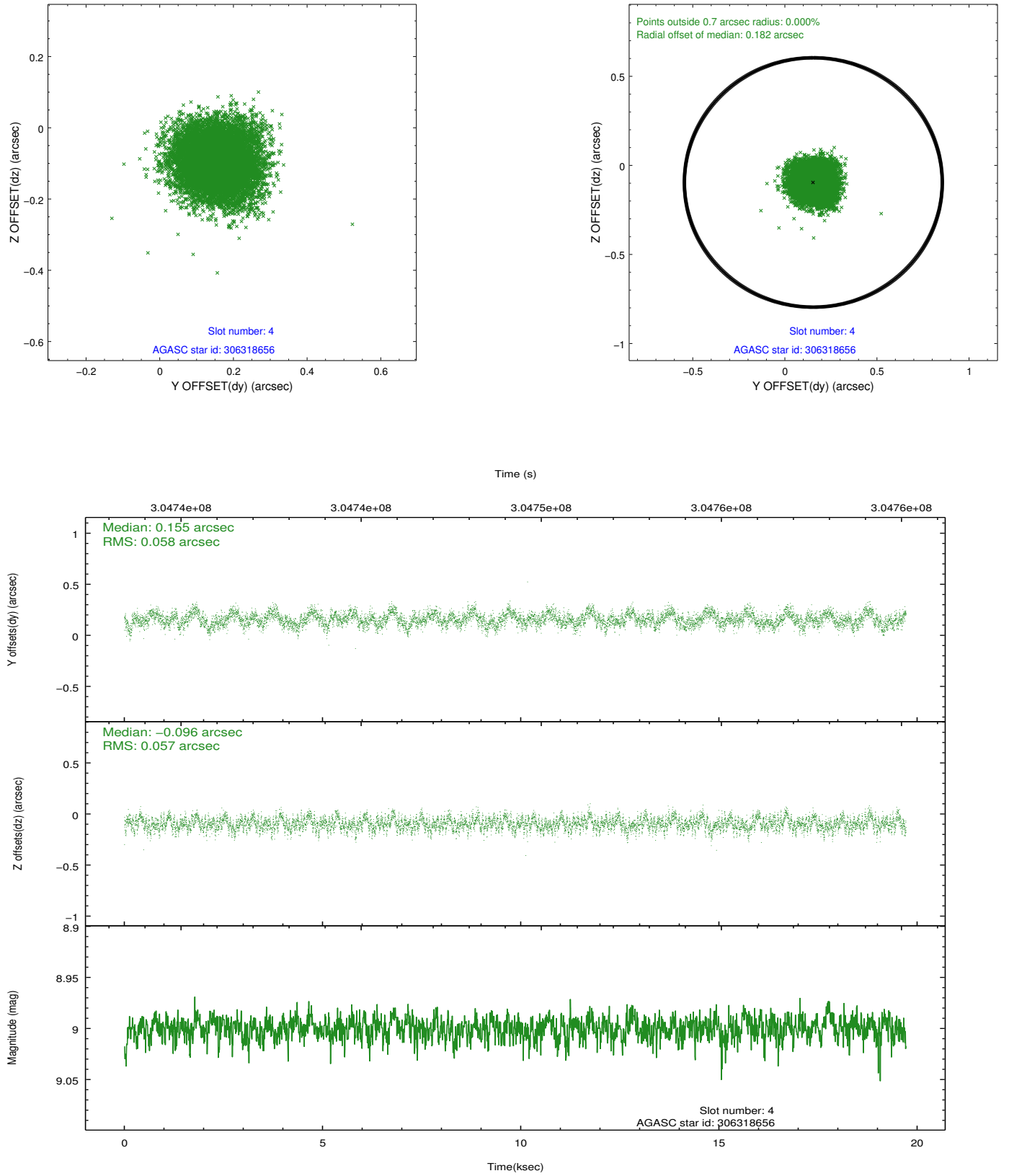
slot	status	id	mag	n_pts	med_dy	med_dz	dr1	dr2	ra	dec	mean_y	mean_z
0	FID	ACIS-I-1	7.23	4809	0.066	-0.003	0.007	0.012	0.000000	0.000000	925.99	-837.96
1	FID	ACIS-I-2	7.14	4808	-0.048	-0.049	0.009	0.016	0.000000	0.000000	-768.11	-844.62
2	FID	ACIS-I-5	7.22	4808	-0.111	0.124	0.008	0.014	0.000000	0.000000	-1822.63	1059.44
3	GUIDE	306318256	8.81	9617	0.291	-0.027	0.081	0.129	40.831601	36.938590	-1239.17	731.78
4	GUIDE	306318656	9.00	9614	0.155	-0.096	0.088	0.140	41.038920	37.008057	-1253.62	85.62
5	GUIDE	372904488	8.71	9616	-0.106	0.151	0.077	0.121	41.129564	37.995715	1890.19	-1594.78
6	GUIDE	372911000	8.32	9614	-0.265	-0.202	0.055	0.089	40.231521	37.802664	2302.50	1016.57
7	GUIDE	372916176	8.74	9610	-0.081	0.169	0.099	0.162	41.331672	38.068694	1898.81	-2225.10

2.4 Star Slots

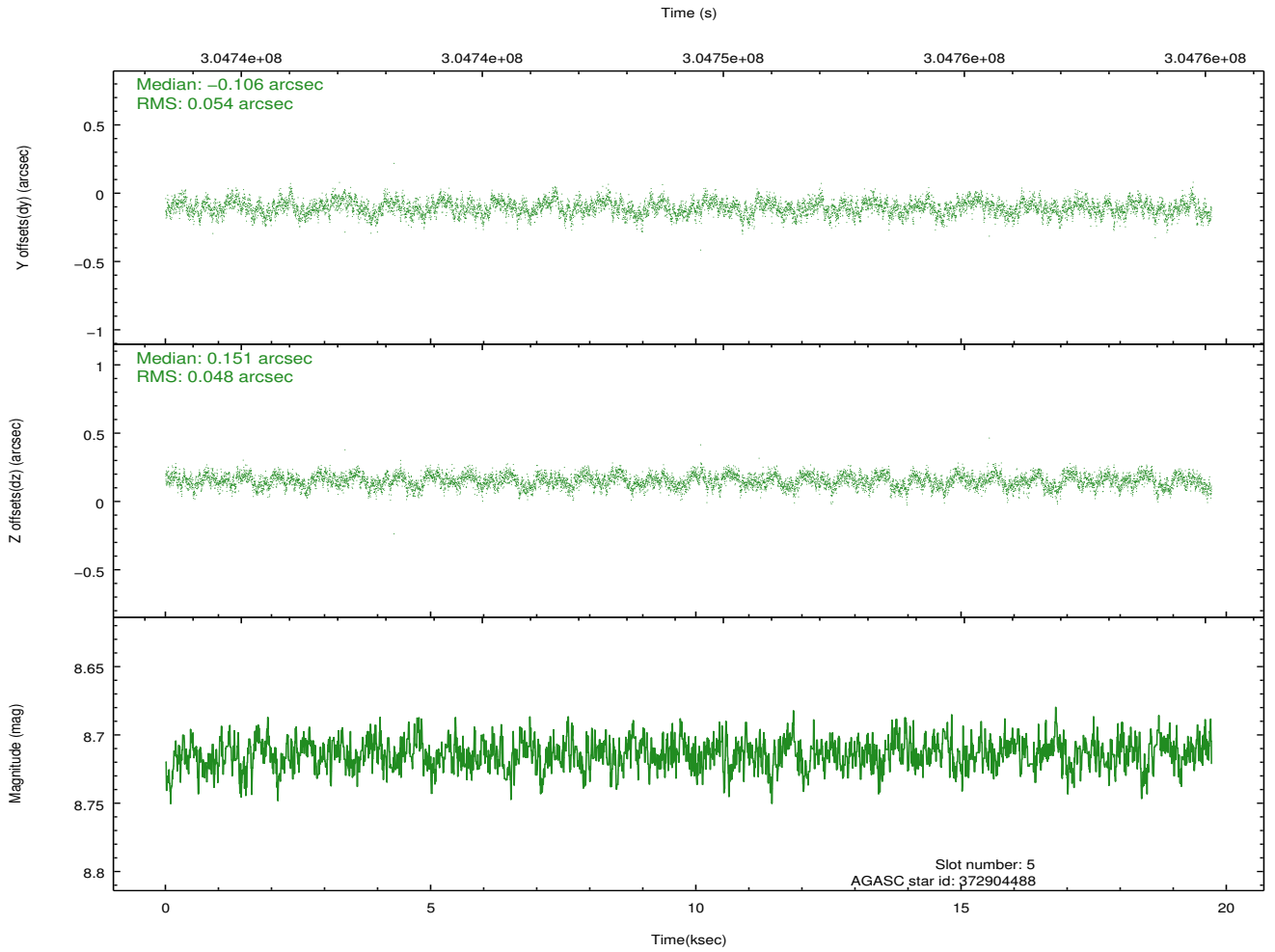
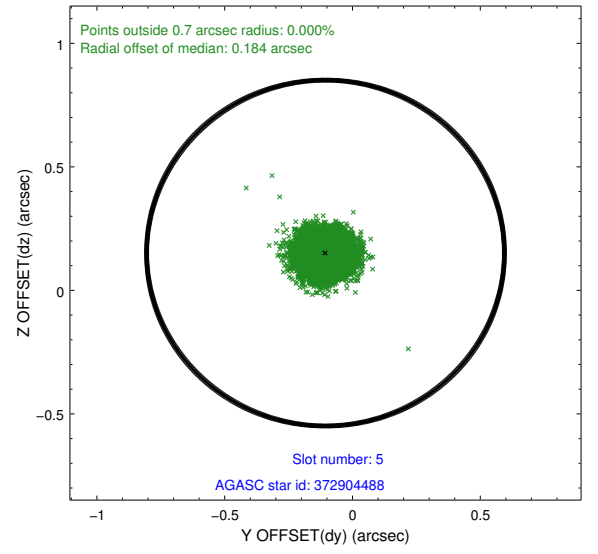
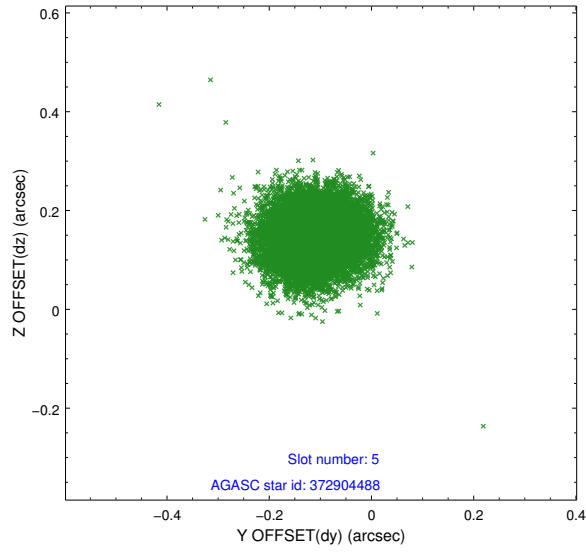
2.4.1 Slot 3



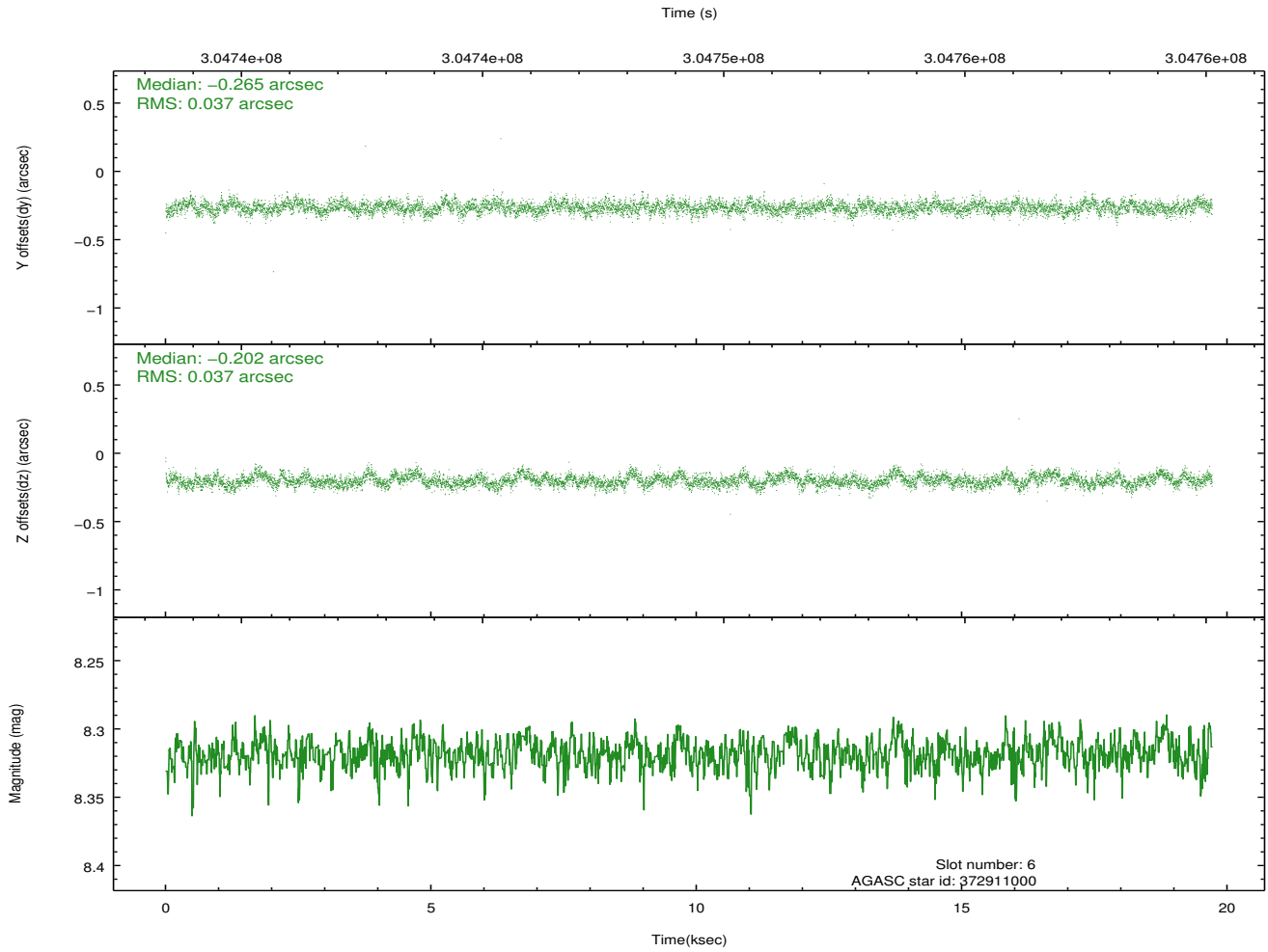
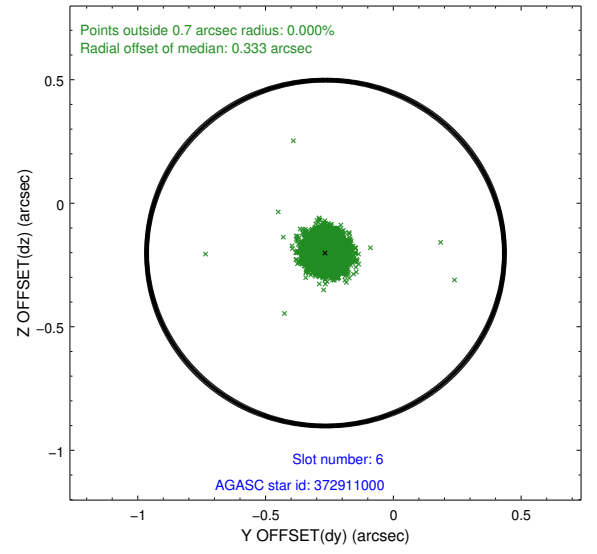
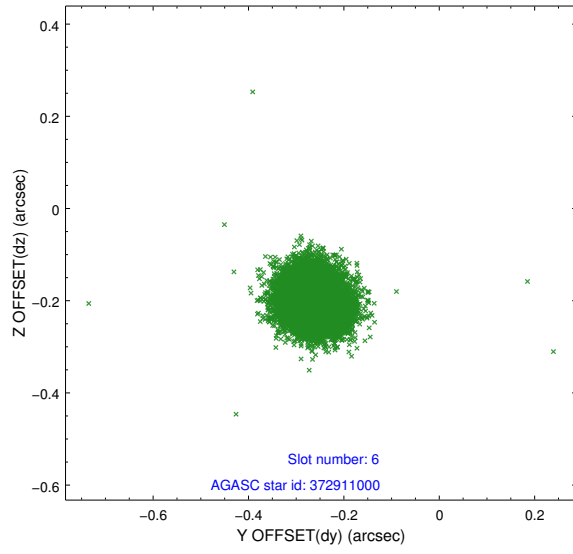
2.4.2 Slot 4



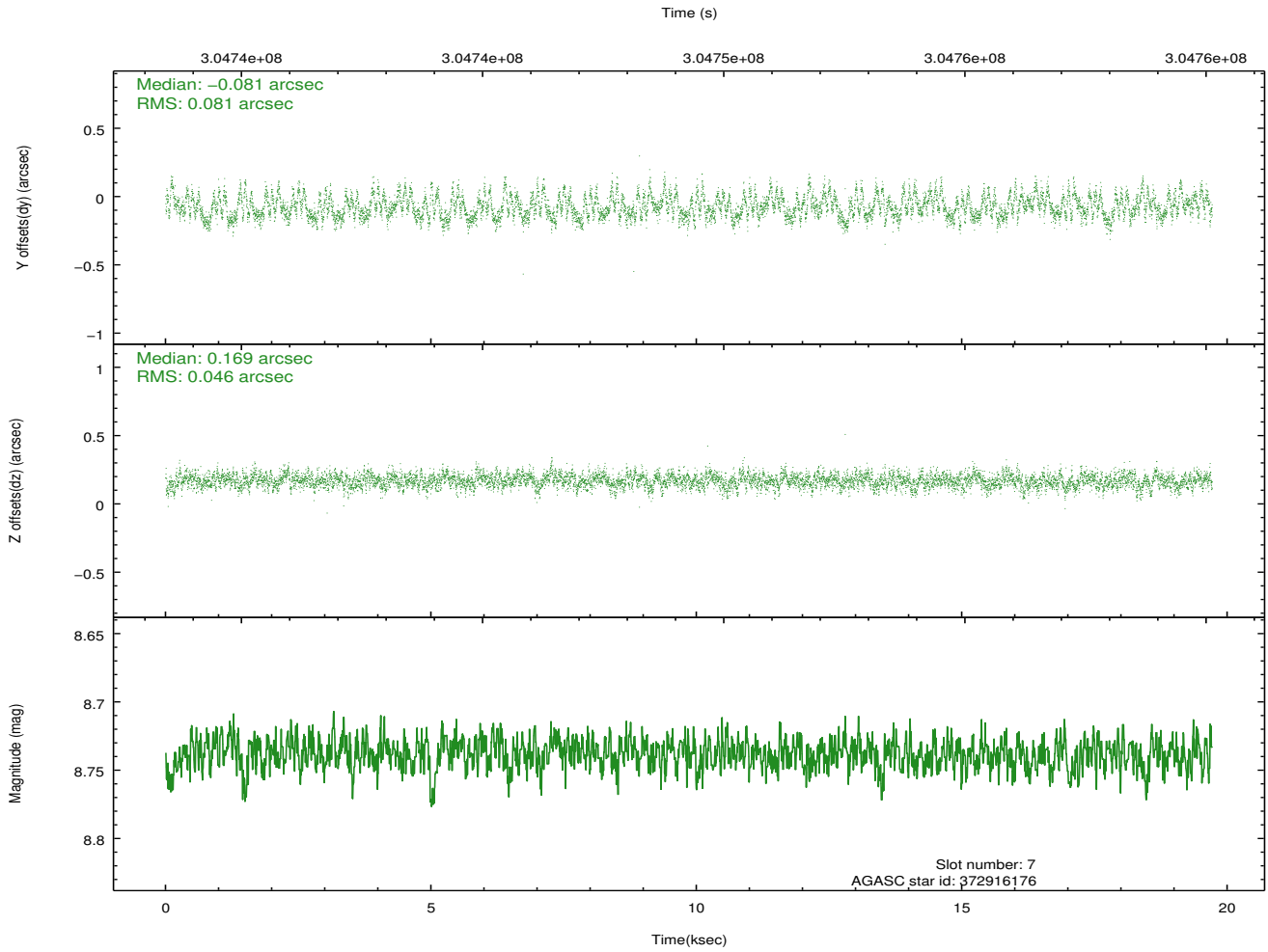
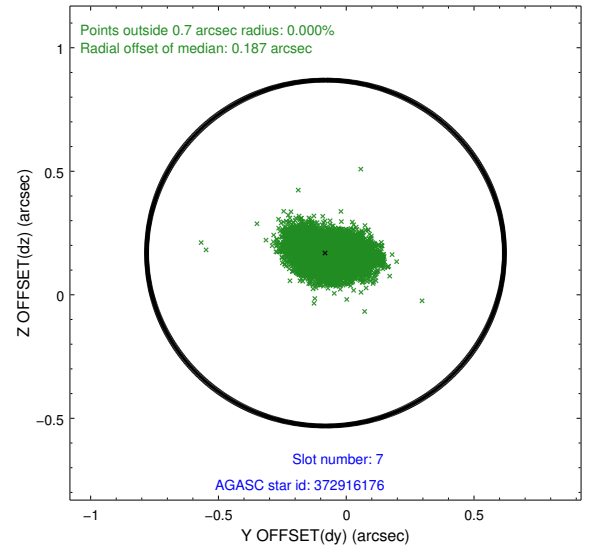
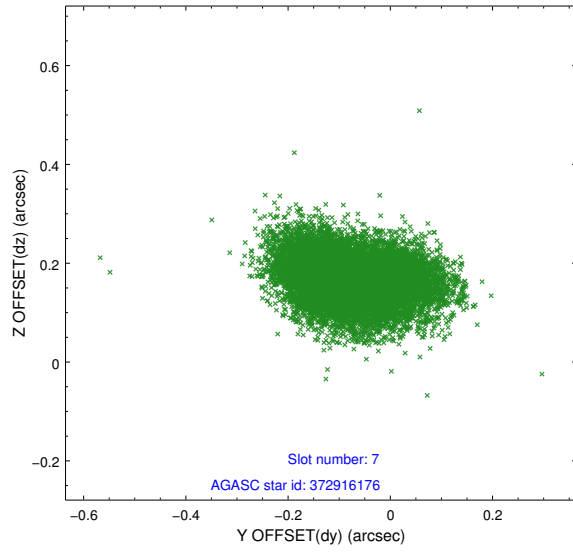
2.4.3 Slot 5



2.4.4 Slot 6

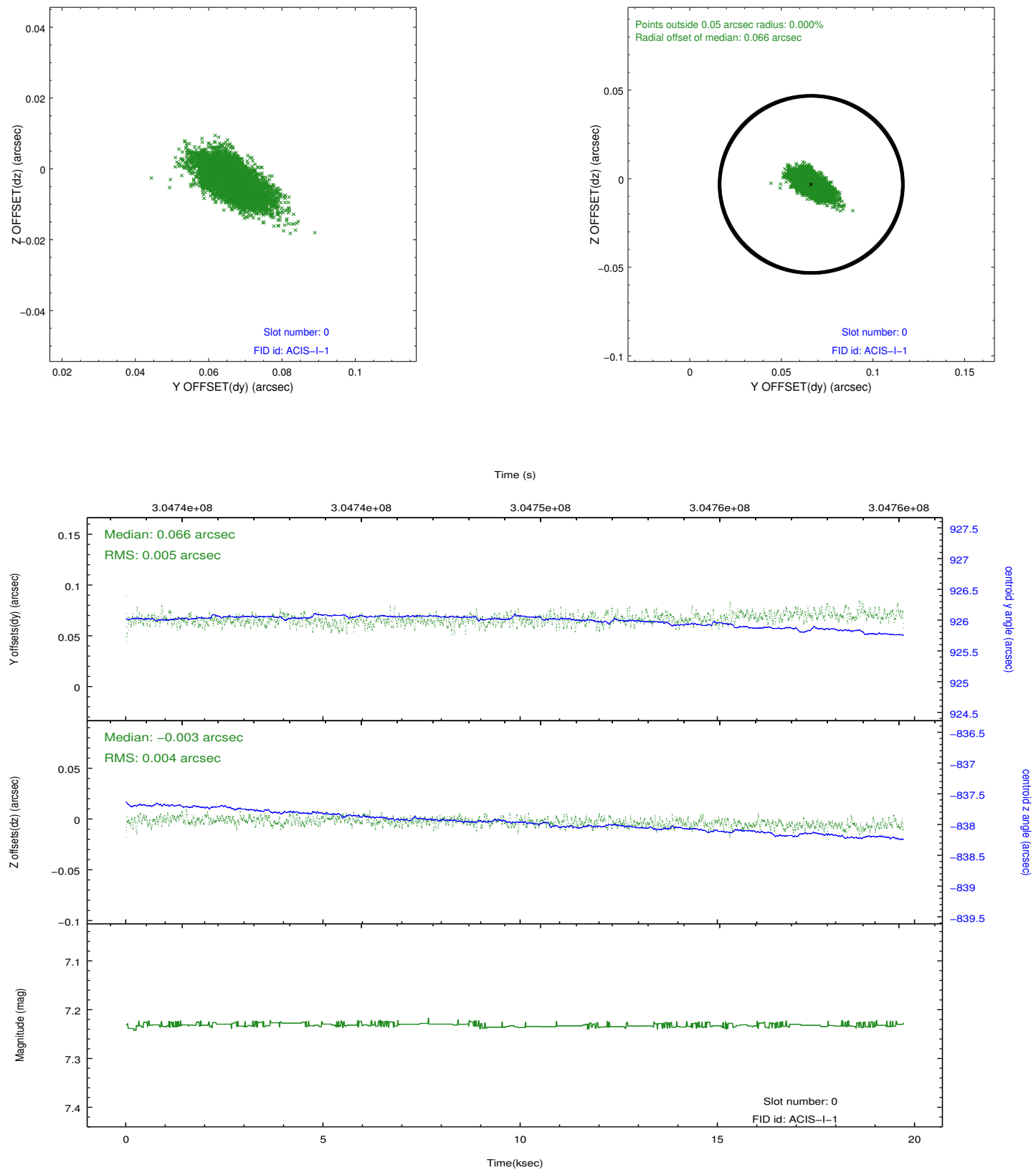


2.4.5 Slot 7

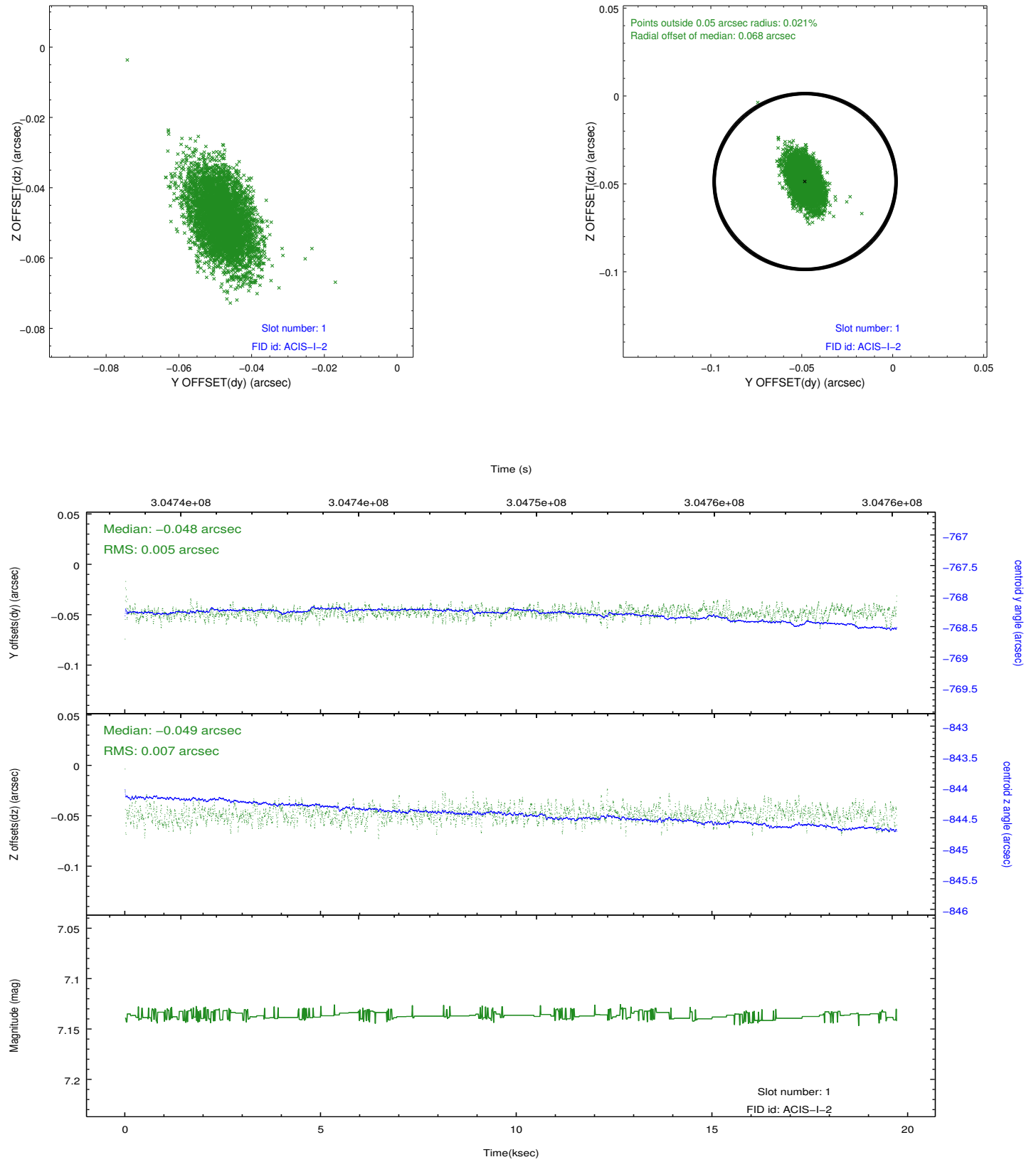


2.5 FID Slots

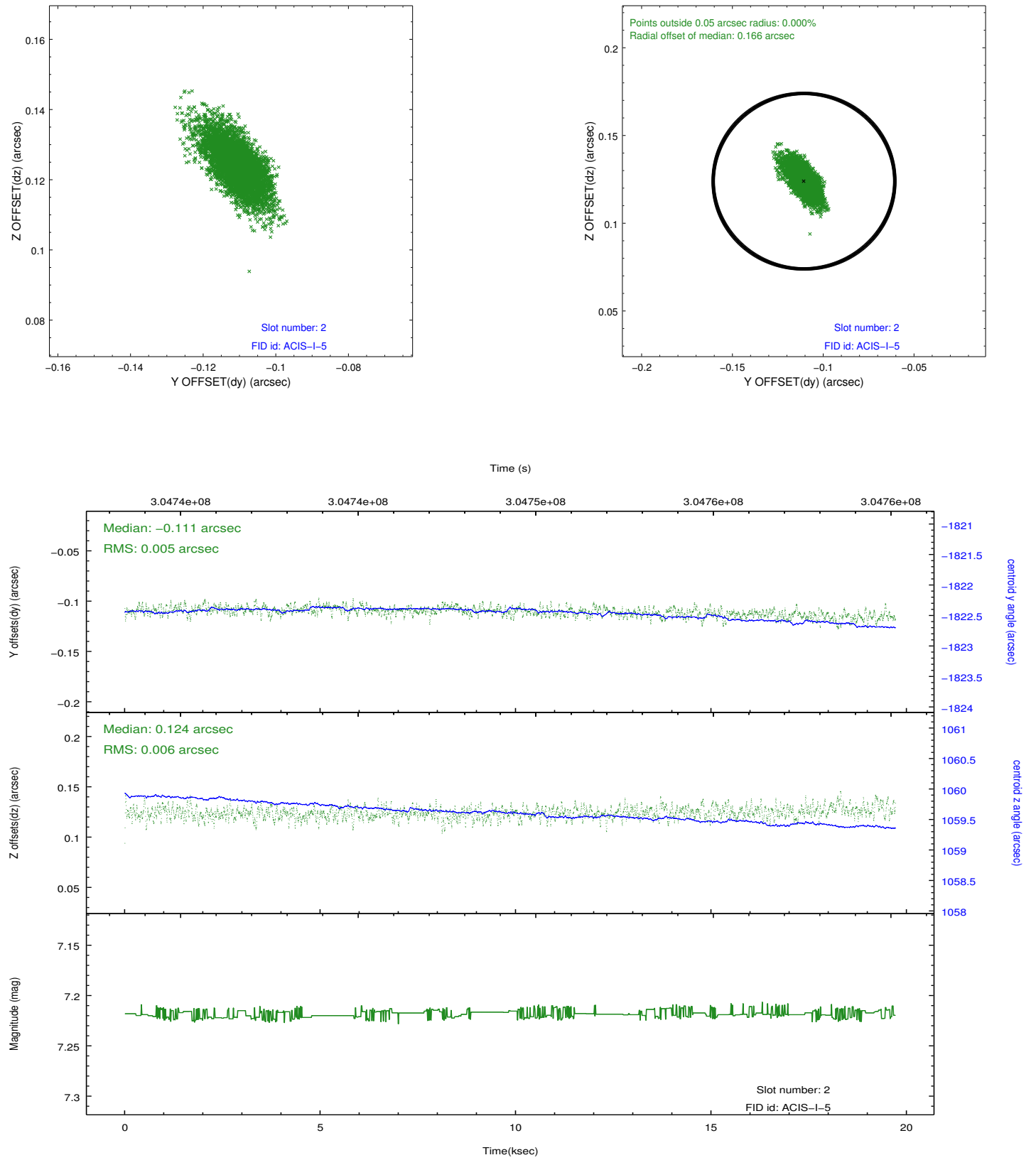
2.5.1 Slot 0



2.5.2 Slot 1



2.5.3 Slot 2



A Summary

A.1 Status

V&V Scientist	Jen Lauer
V&V Date (YYYY-MM-DD)	2012.05.02
V&V Edition	1
V&V Disposition and Status	OK
V&V Charge Time	19.7097591

A.2 Comments