

V&V Reference Report

L2 ASCDS Version : 8.4.4

Observation 9439 - L2 Version 2
Chandra X-Ray Center

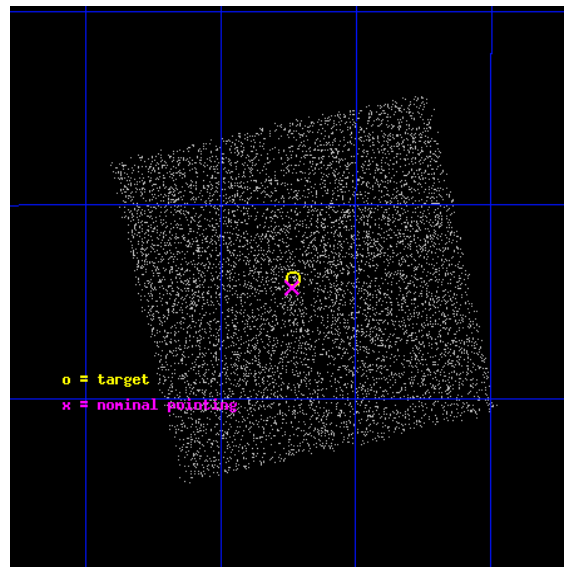
L2 Processing Date : May 16 2012

Contents

1	Front	2
2	OBI	3
2.1	OBI	3
2.1.1	Images	3
2.1.2	Bias	3
2.1.3	Parameters	4
2.1.4	Events	4
2.2	Compared Parameters	5
2.3	Aspect	6
2.4	Star Slots	9
2.4.1	Slot 3	9
2.4.2	Slot 4	10
2.4.3	Slot 5	11
2.4.4	Slot 6	12
2.4.5	Slot 7	13
2.5	FID Slots	14
2.5.1	Slot 0	14
2.5.2	Slot 1	15
2.5.3	Slot 2	16
A	Summary	17
A.1	Status	17
A.2	Comments	17

1 Front

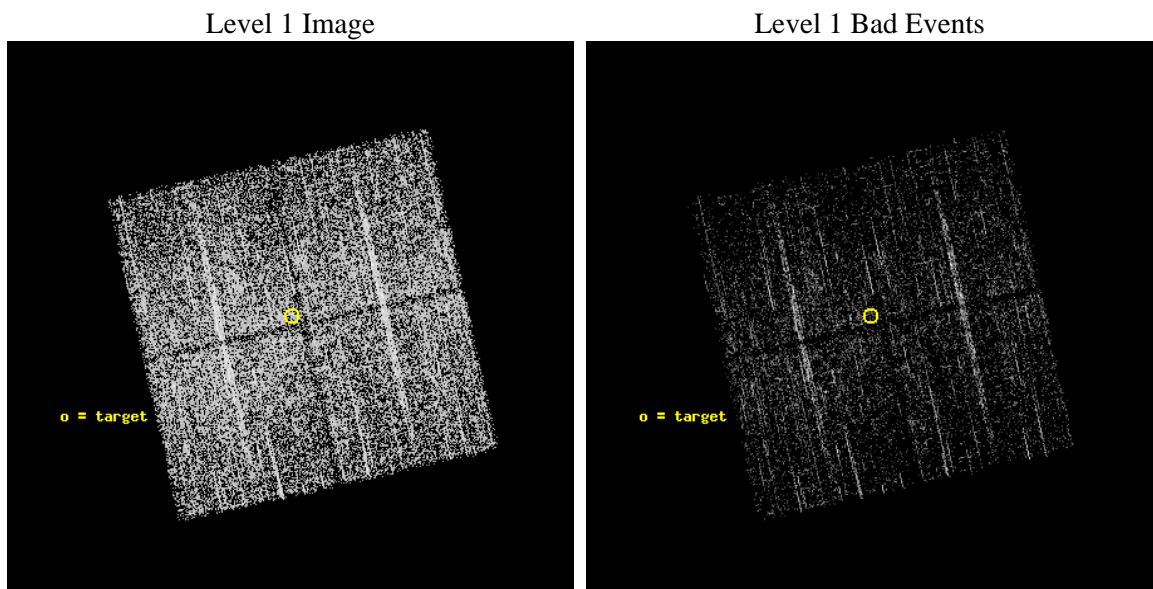
seq_num	900785	Sequence number
obs_id	9439	Observation id
title	Comparing the emission from an unbiased AGN sample with the X-ray background	Proposal title
observer	Dr Roland Walter	Principal investigator
object	ESO 575-59	Source name
dtcycle	0	
cycle	P	events from which exps? Prim/Second/Both
ra_targ	196.933333	Observer's specified target RA [deg]
dec_targ	-19.396667	Observer's specified target Dec [deg]
ra_nom	196.93416262877	Nominal RA [deg]
dec_nom	-19.404735090894	Nominal Dec [deg]
roll_nom	257.51316740211	Nominal Roll [deg]
revision	2	Processing version of data
ontime	2182.4000167847	Sum of GTIs [s]
livetime	2153.8853539059	Livetime [s]
ontime0	2182.4000167847	Sum of GTIs [s]
ontime1	2182.4000167847	Sum of GTIs [s]
ontime2	2182.4000167847	Sum of GTIs [s]
ontime3	2182.4000167847	Sum of GTIs [s]
l2events	8743	Number of level 2 events



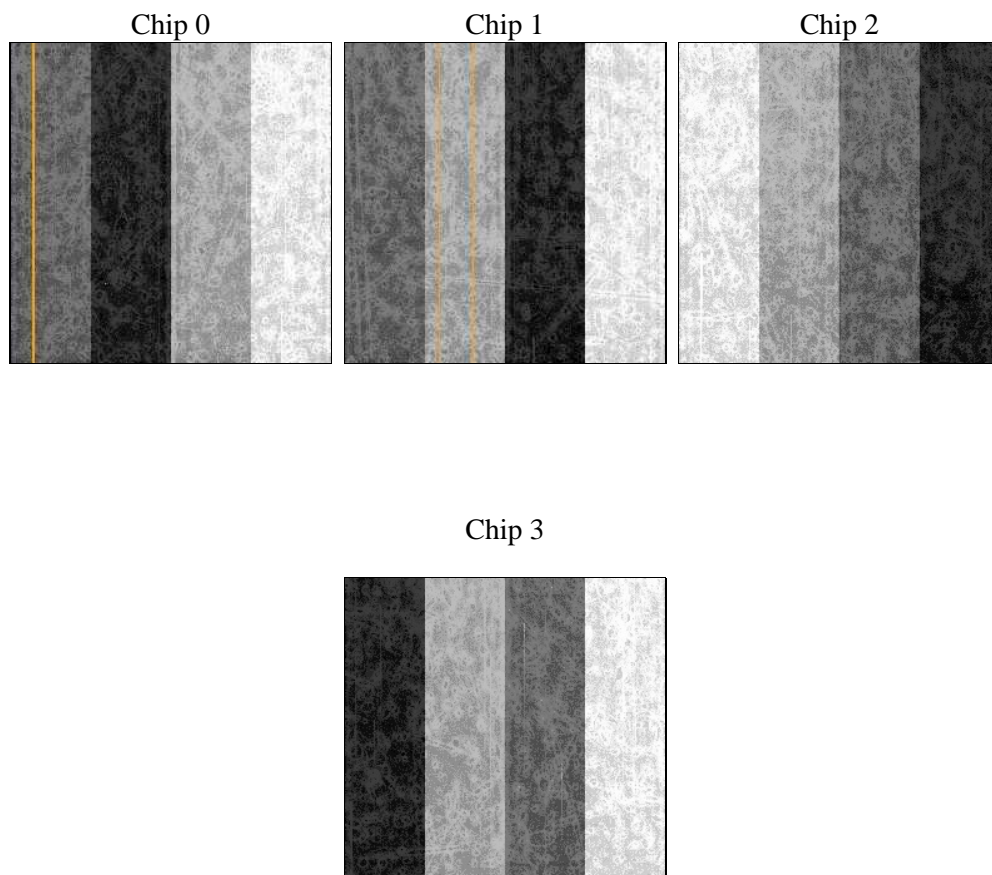
2 OBI

2.1 OBI

2.1.1 Images



2.1.2 Bias



2.1.3 Parameters

obi_num	0	Obi number	sched_exp_time	2000.000000	[s] Scheduled observation exposure time
ascdsver	8.4.4	Processing system revision	ontime	2182.4000167847	Sum of GTIs [s]
caldsver	4.4.9	 	ontime0	2182.4000167847	Sum of GTIs [s]
date	2012-05-16T02:40:57	Date and time of file creation	ontime1	2182.4000167847	Sum of GTIs [s]
revision	2	Processing version of data	ontime2	2182.4000167847	Sum of GTIs [s]
			ontime3	2182.4000167847	Sum of GTIs [s]
			l1events	124076	Number of level 1 events

2.1.4 Events

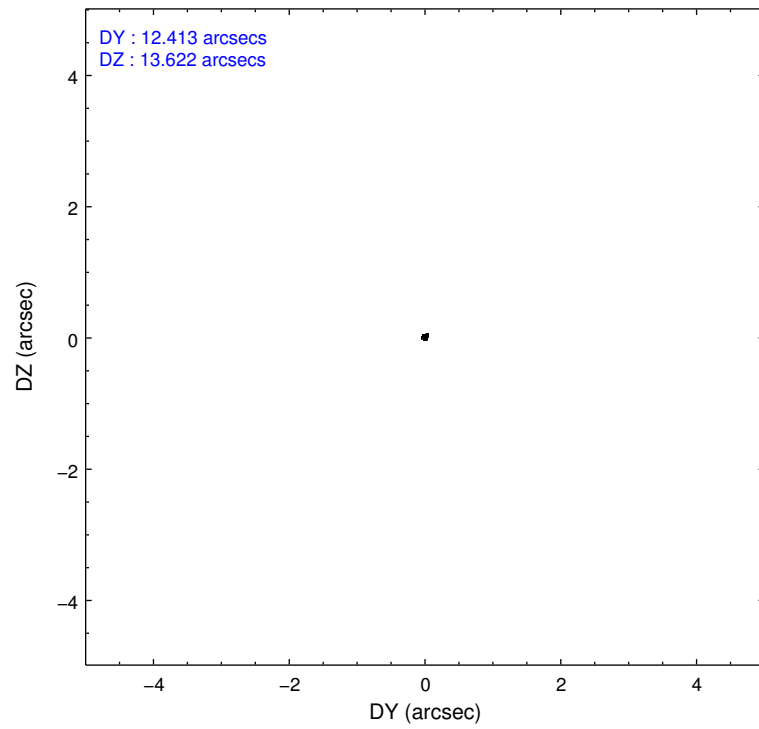
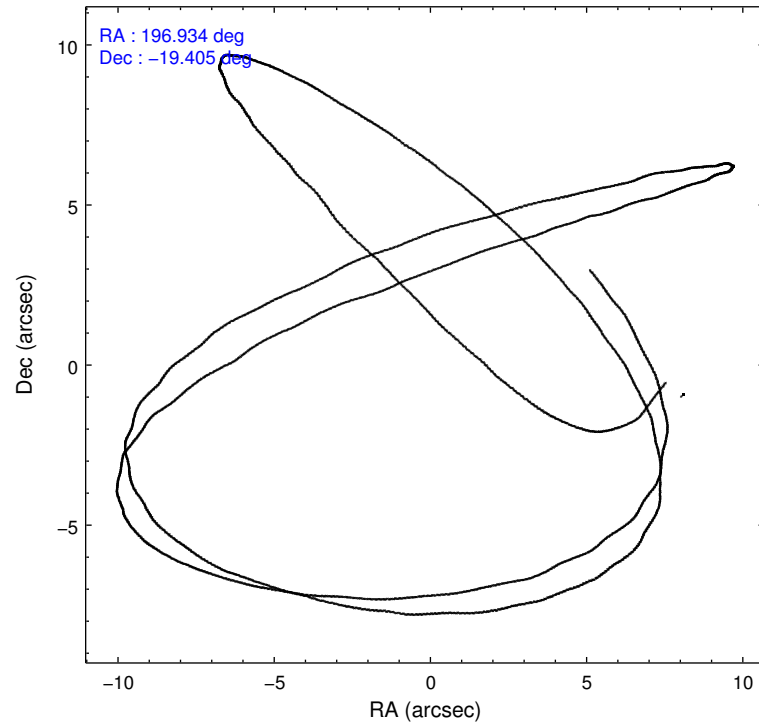
	ccd 0	ccd 1	ccd 2	ccd 3
level 1 events	30137	29216	33214	31509
rejected events	27539	26465	30706	29052
rejected %	91%	90%	92%	92%

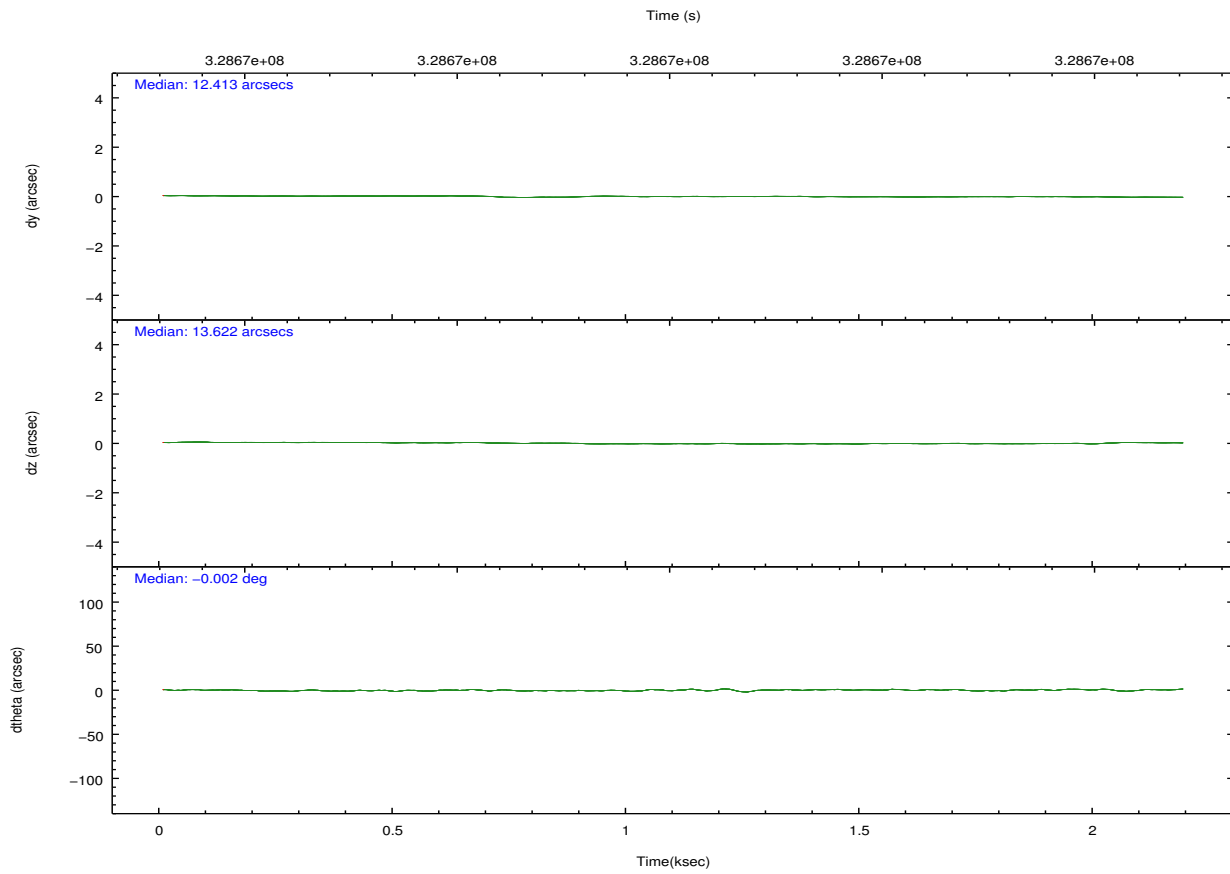
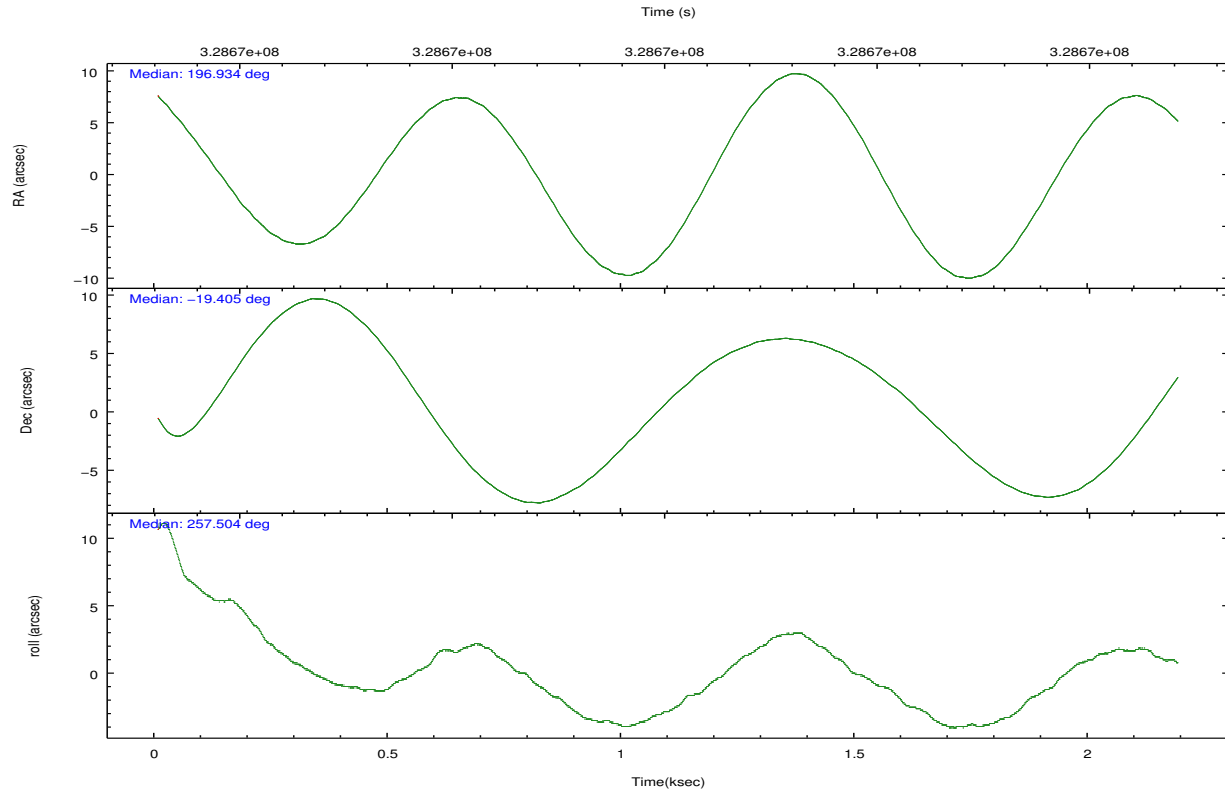
	ccd 0	ccd 1	ccd 2	ccd 3
grade 0 events	1816	1597	1735	1660
	6%	5%	5%	5%
grade 1 events	19	17	18	31
	0%	0%	0%	0%
grade 2 events	910	997	946	814
	3%	3%	2%	2%
grade 3 events	405	393	326	357
	1%	1%	0%	1%
grade 4 events	360	406	364	407
	1%	1%	1%	1%
grade 5 events	1390	1442	1395	1538
	4%	4%	4%	4%
grade 6 events	675	902	650	709
	2%	3%	1%	2%
grade 7 events	24562	23462	27780	25993
	81%	80%	83%	82%

2.2 Compared Parameters

Parameter	Planned	Actual	Parameter	Planned	Actual
Instrument	ACIS	ACIS	Obspar format version number	7	7
Detector	ACIS-0123	ACIS-0123	Obspar file type	PREDICTED	ACTUAL
Grating	NONE	NONE	Obspar update status	NONE	UPDATED
Data mode	FAINT	FAINT	Number of optional ACIS chips dropped	0	0
Observation mode	POINTING	POINTING	On-chip summing requested	N	N
[deg] Pointing RA	196.925166	196.934162628767	Subarray requested	NONE	NONE
[deg] Pointing Dec	-19.378531	-19.40473509089424	Alternating exposures requested	N	N
[deg] Pointing Roll	257.301457	257.5131674021056	[s] Primary exposure time	0.000000	3.1
[mm] SIM focus pos	-0.782348	-0.7809083437167272			
[mm] SIM defocus	0	0.001439871863259334			
[mm] SIM translation stage pos	-233.592463	-233.5874344608287			
[mm] SIM translation stage offset	0	-0.005018542100998502			
[s] Observation start time (MET)	328668100.184000	328666503.97894			
Observation start date	2008-06-01T00:40:35	2008-06-01T00:15:03			
[s] Observation end time (MET)	328670100.184000	328670582.96664			
Observation end date	2008-06-01T01:13:55	2008-06-01T01:23:02			
Read mode	TIMED	TIMED			

2.3 Aspect



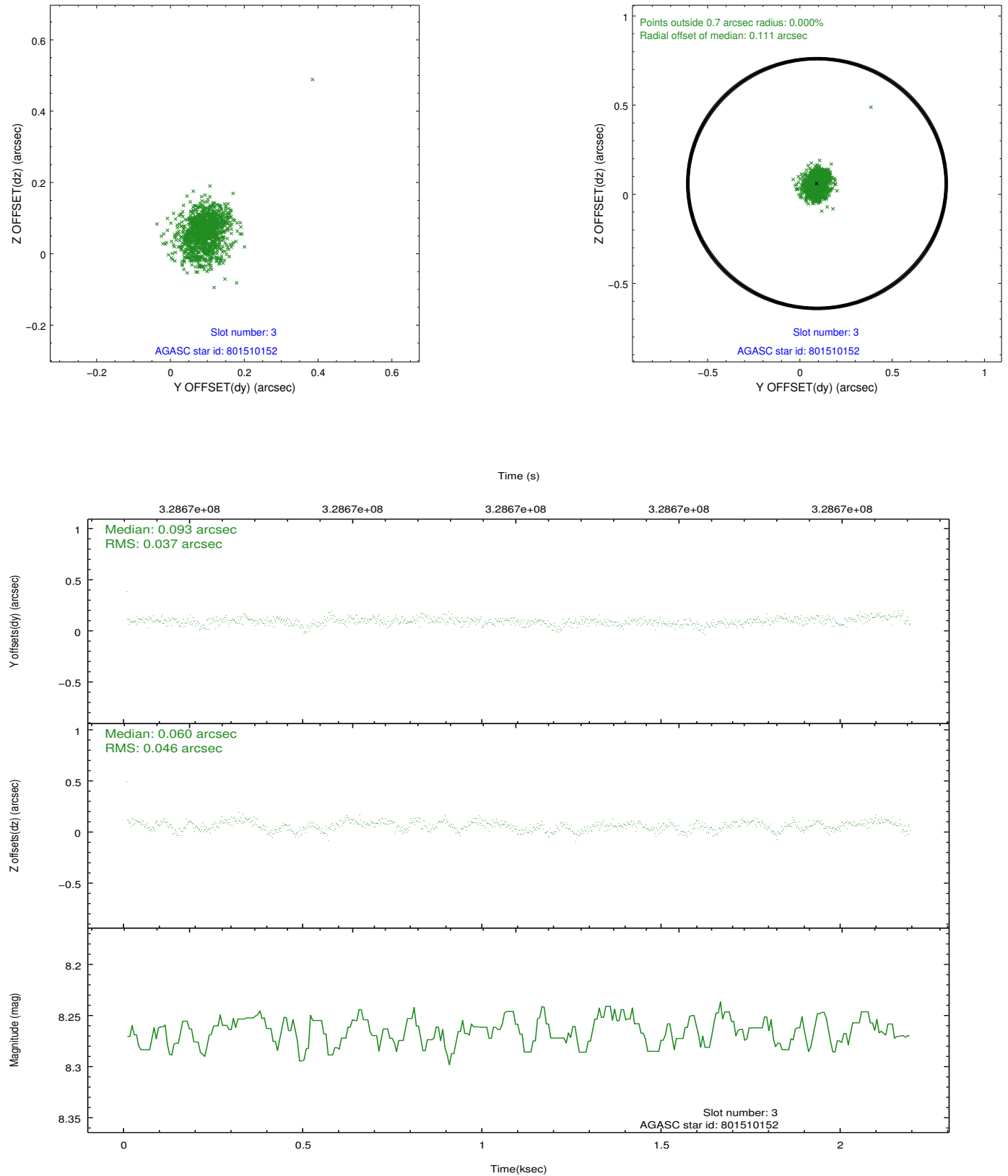


Slot Statistics

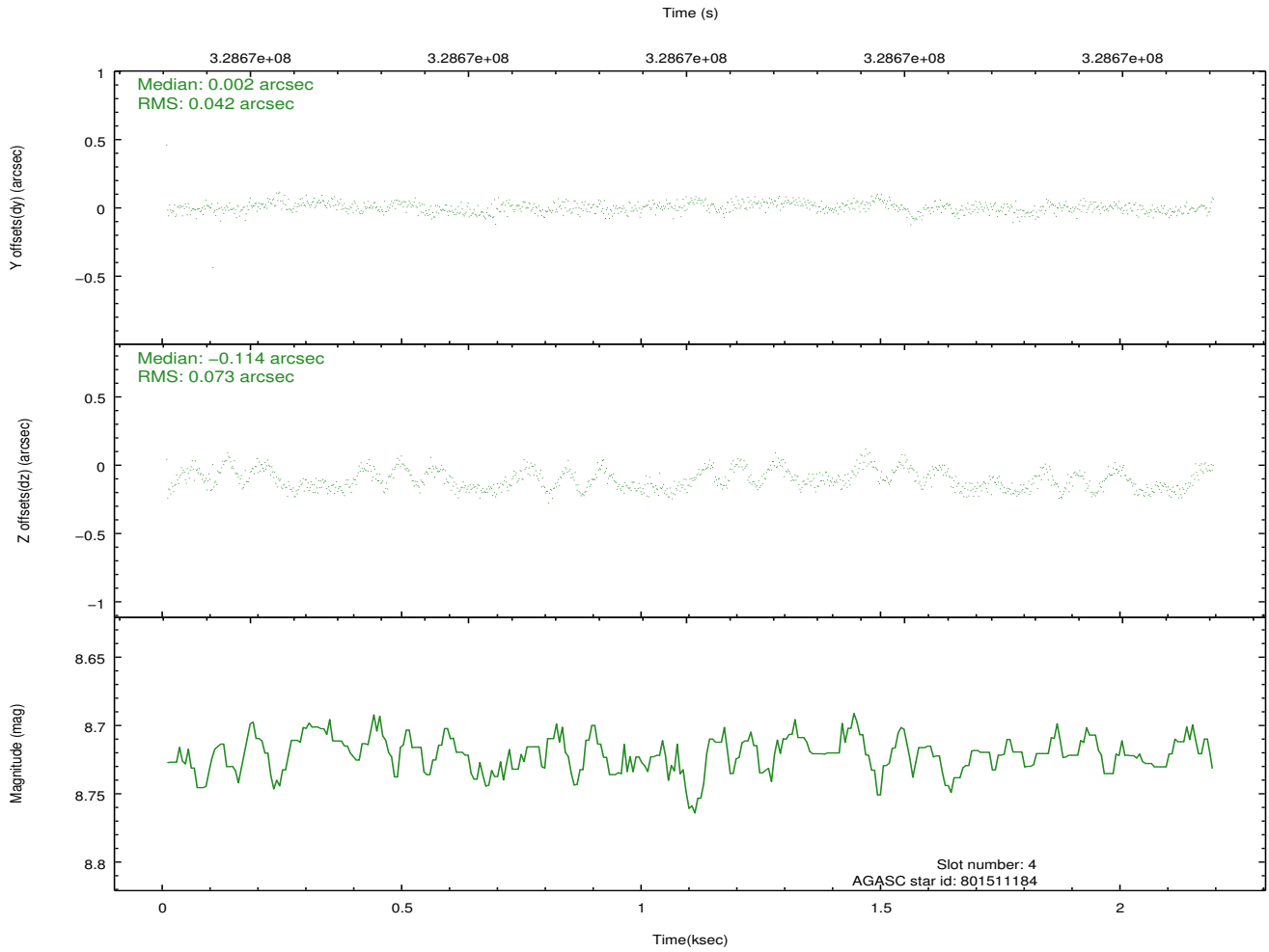
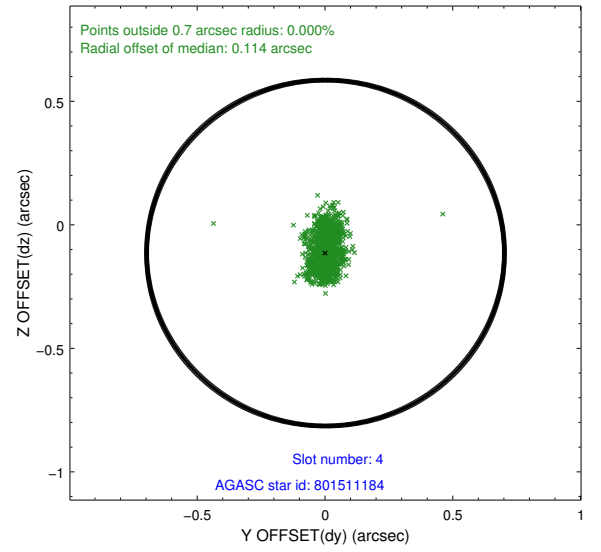
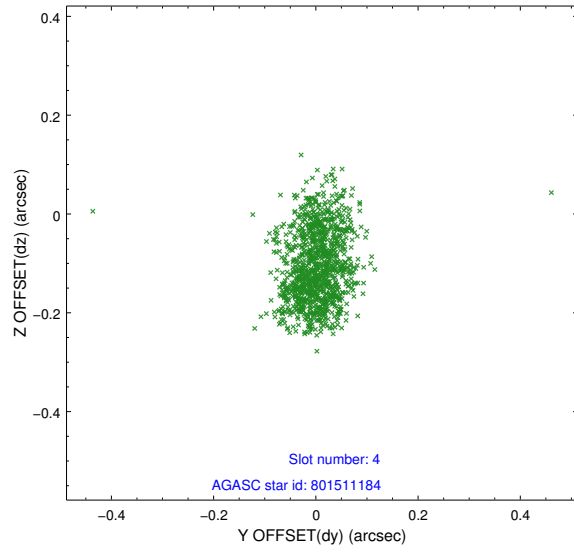
slot	status	id	mag	n_pts	med_dy	med_dz	dr1	dr2	ra	dec	mean_y	mean_z
0	FID	ACIS-I-1	7.03	534	-0.024	0.019	0.008	0.016	0.000000	0.000000	927.09	-837.18
1	FID	ACIS-I-4	6.96	534	0.186	0.022	0.009	0.015	0.000000	0.000000	2149.00	1061.14
2	FID	ACIS-I-5	7.01	534	-0.260	0.029	0.007	0.012	0.000000	0.000000	-1817.31	1062.39
3	GUIDE	801510152	8.26	1067	0.093	0.060	0.060	0.097	196.828877	-19.469639	392.29	-246.48
4	GUIDE	801511184	8.72	1067	0.002	-0.114	0.088	0.141	196.369484	-18.979247	-982.33	-2161.46
5	GUIDE	801513440	8.50	1065	0.028	-0.123	0.075	0.122	196.609068	-18.949495	-1269.50	-1391.85
6	GUIDE	801516112	8.40	1067	-0.048	-0.020	0.081	0.142	196.442569	-18.825851	-1577.68	-2043.45
7	GUIDE	801645472	8.40	1066	-0.075	0.188	0.083	0.121	197.535402	-18.899843	-2135.70	1647.19

2.4 Star Slots

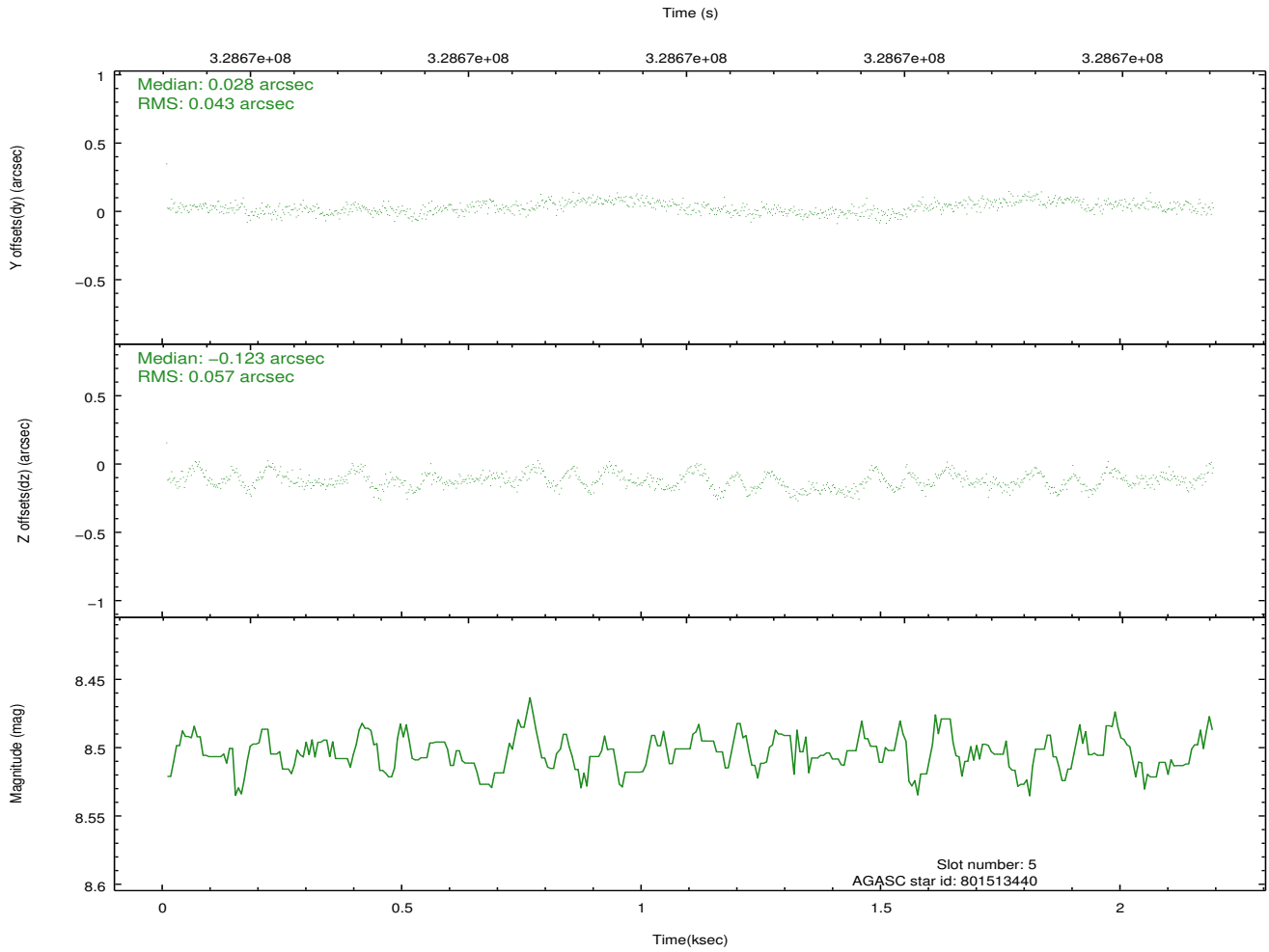
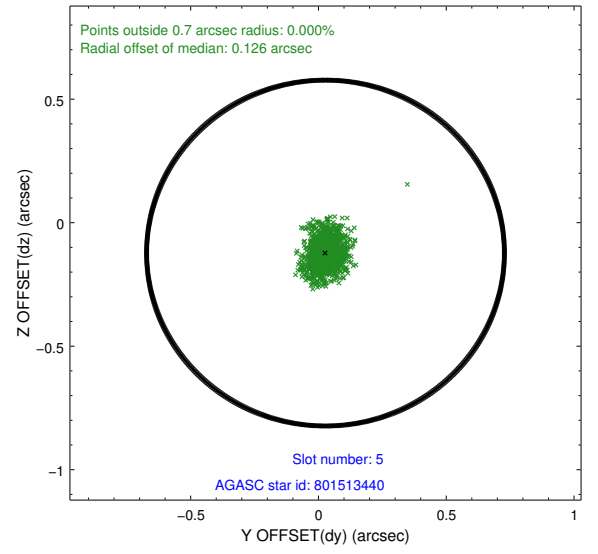
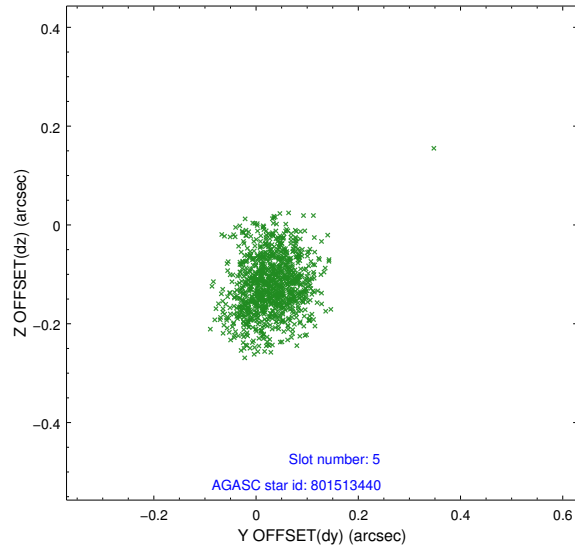
2.4.1 Slot 3



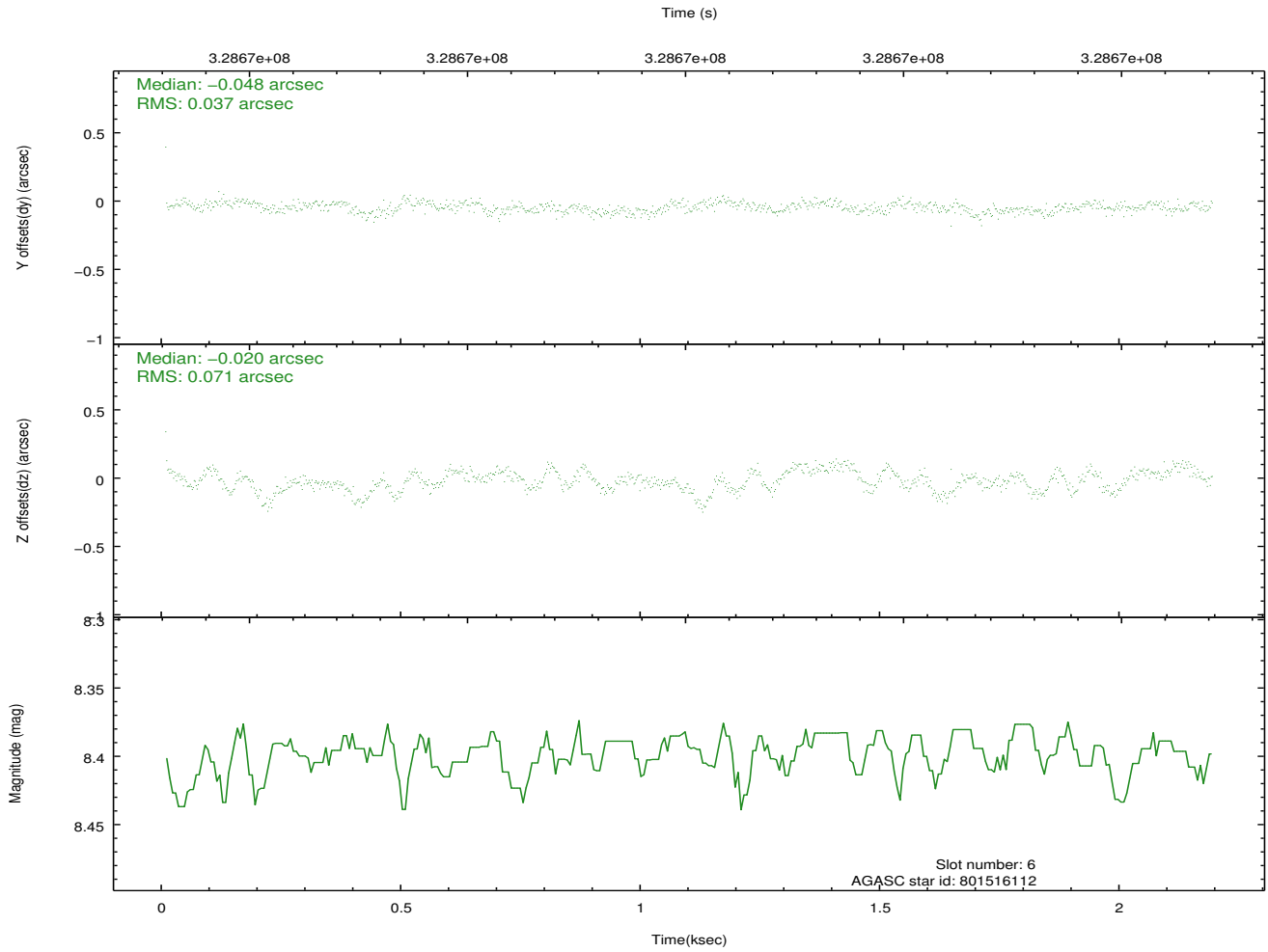
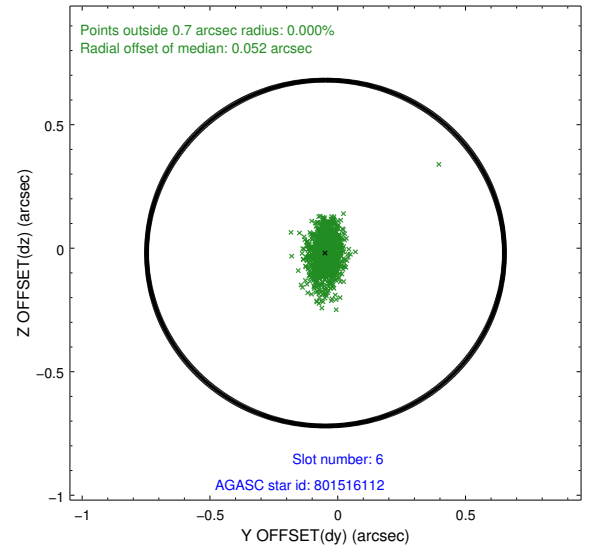
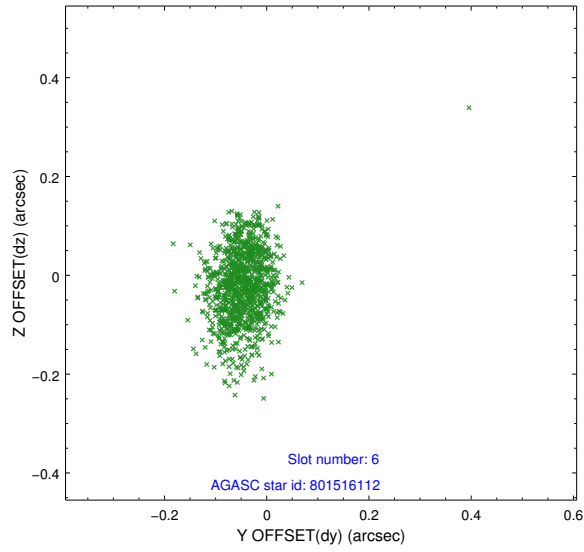
2.4.2 Slot 4



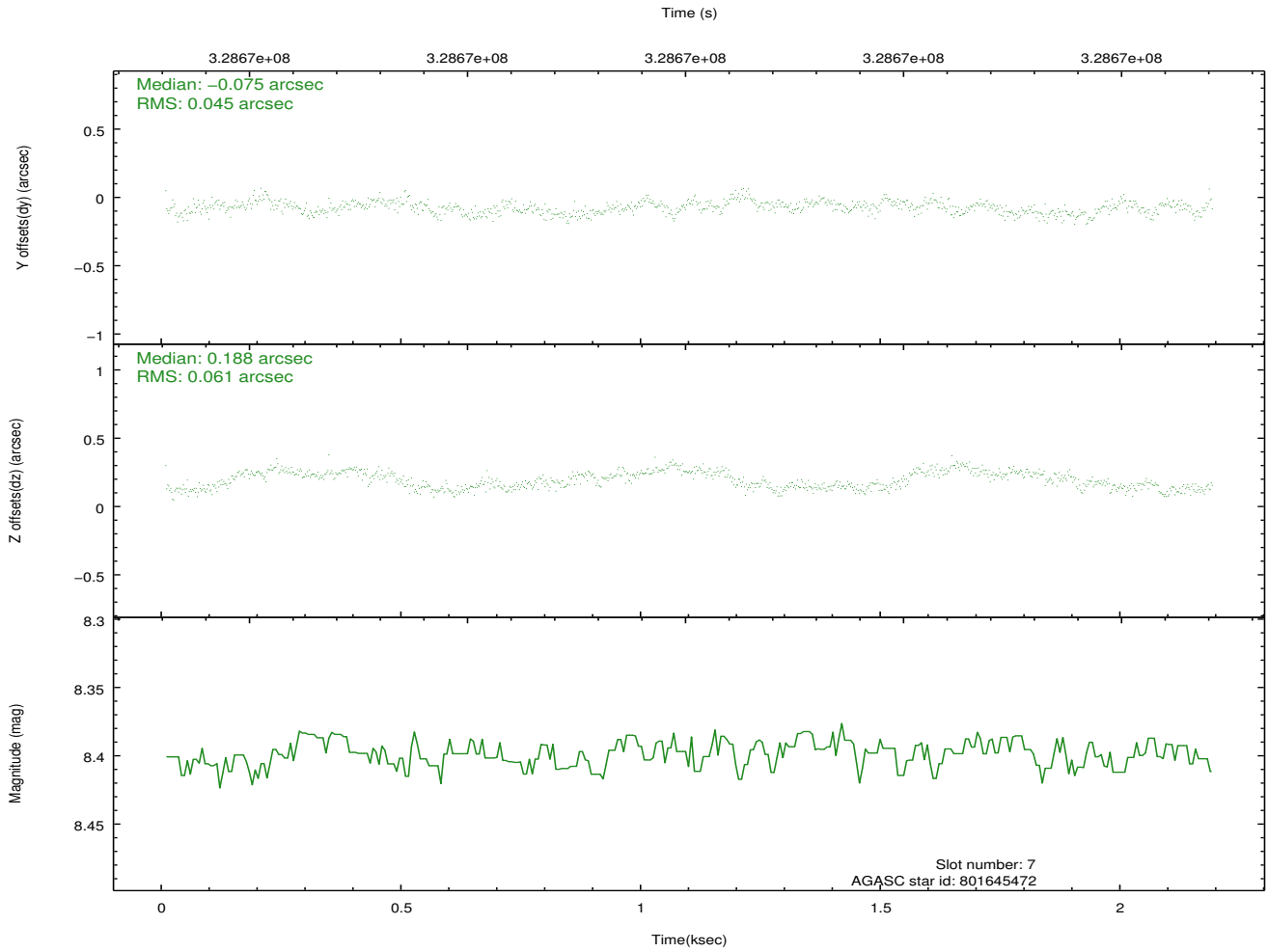
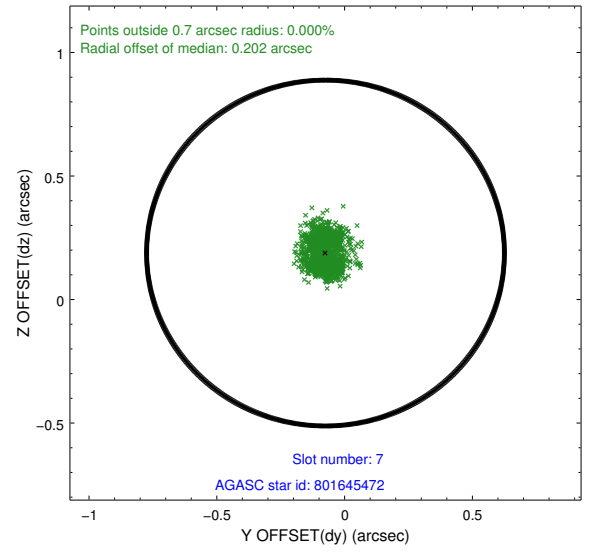
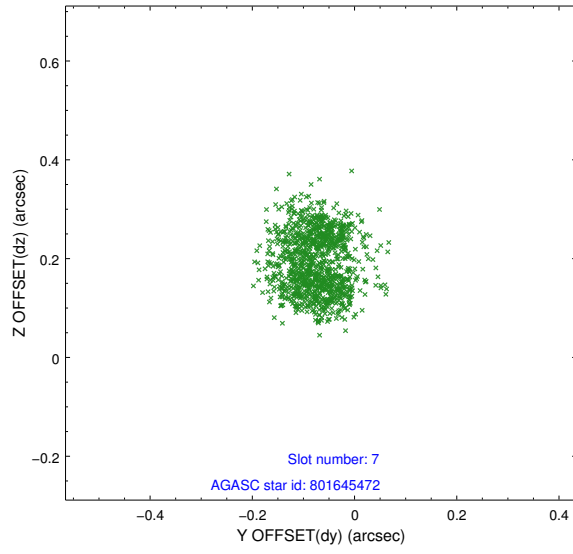
2.4.3 Slot 5



2.4.4 Slot 6

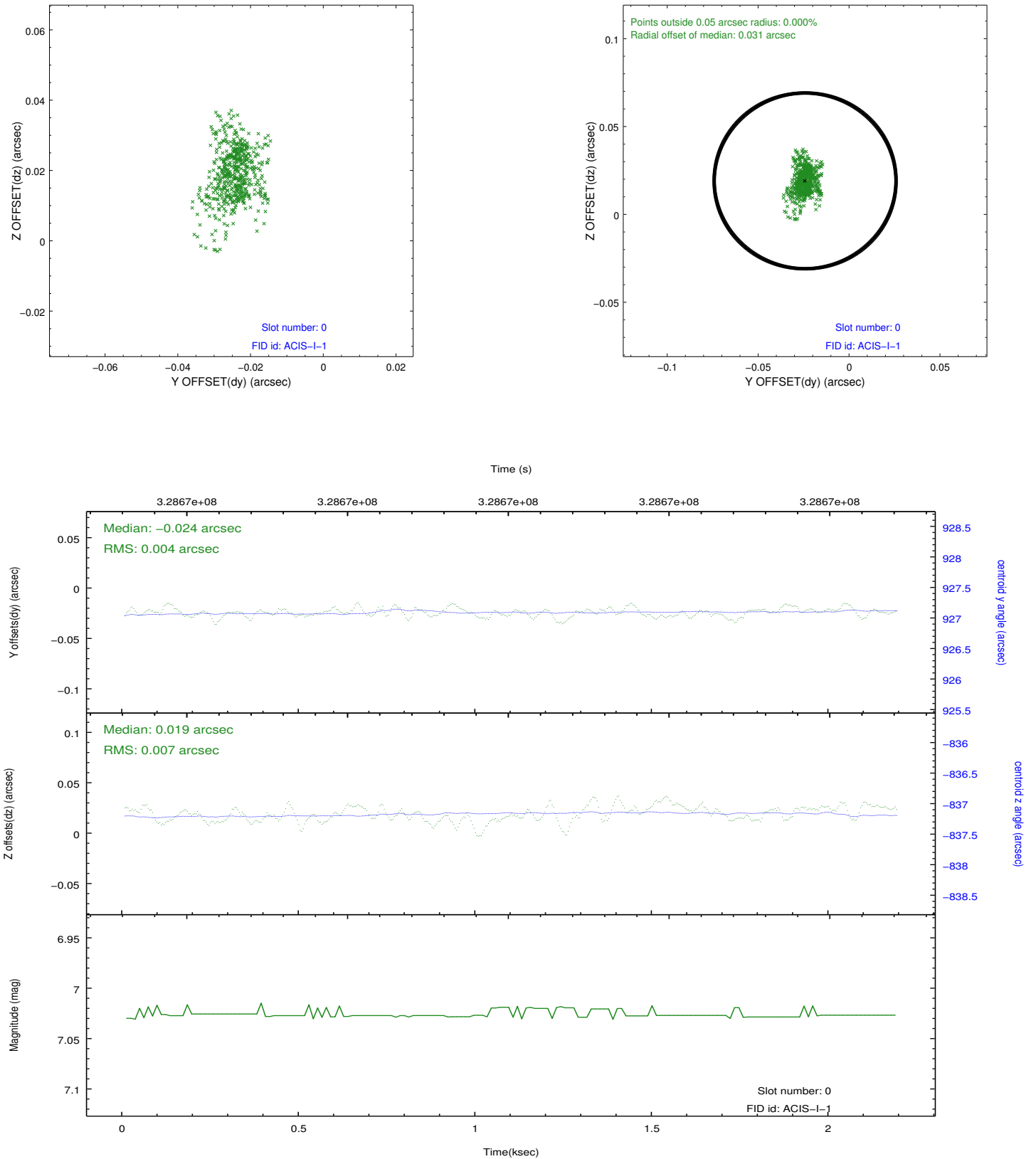


2.4.5 Slot 7

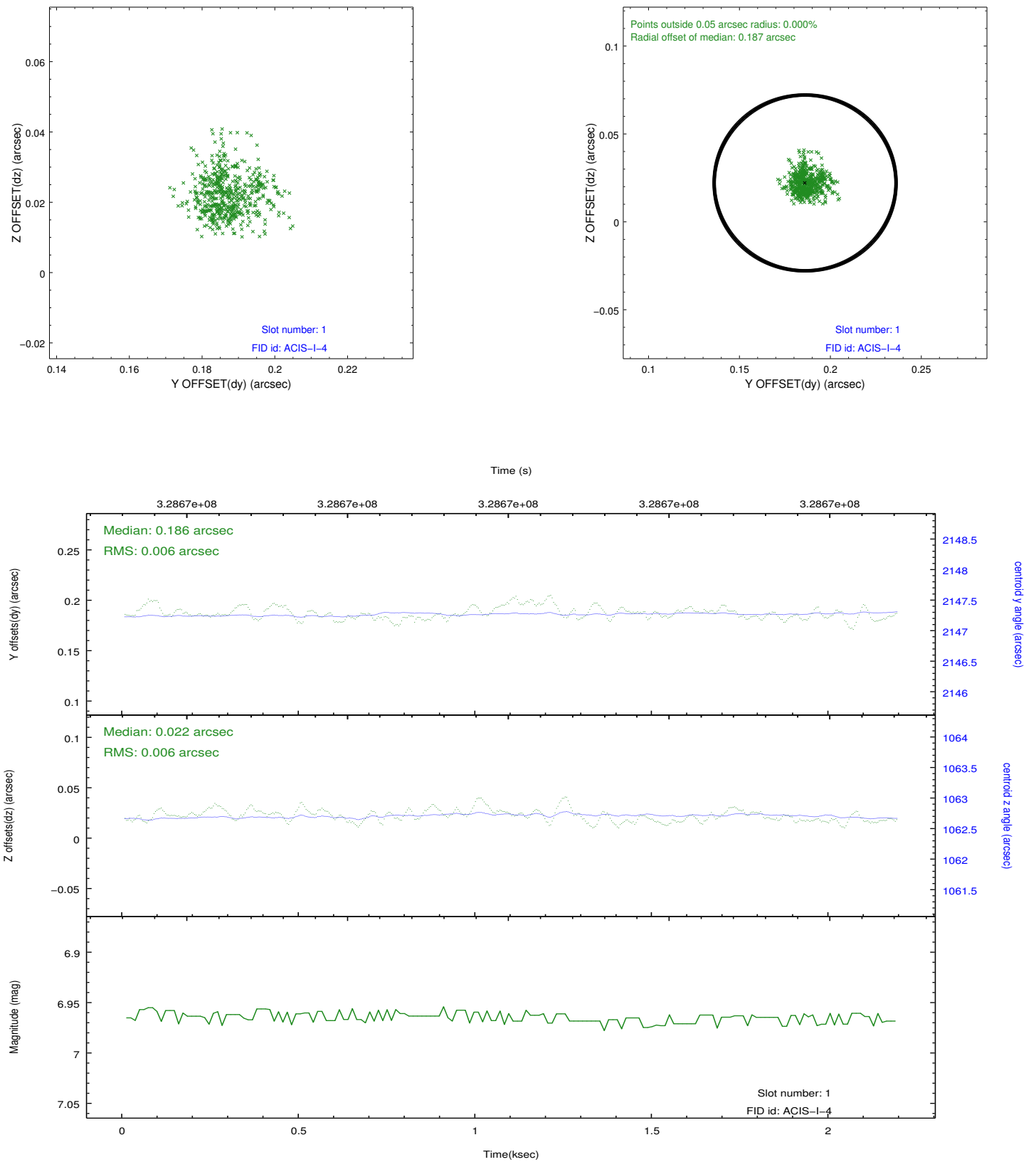


2.5 FID Slots

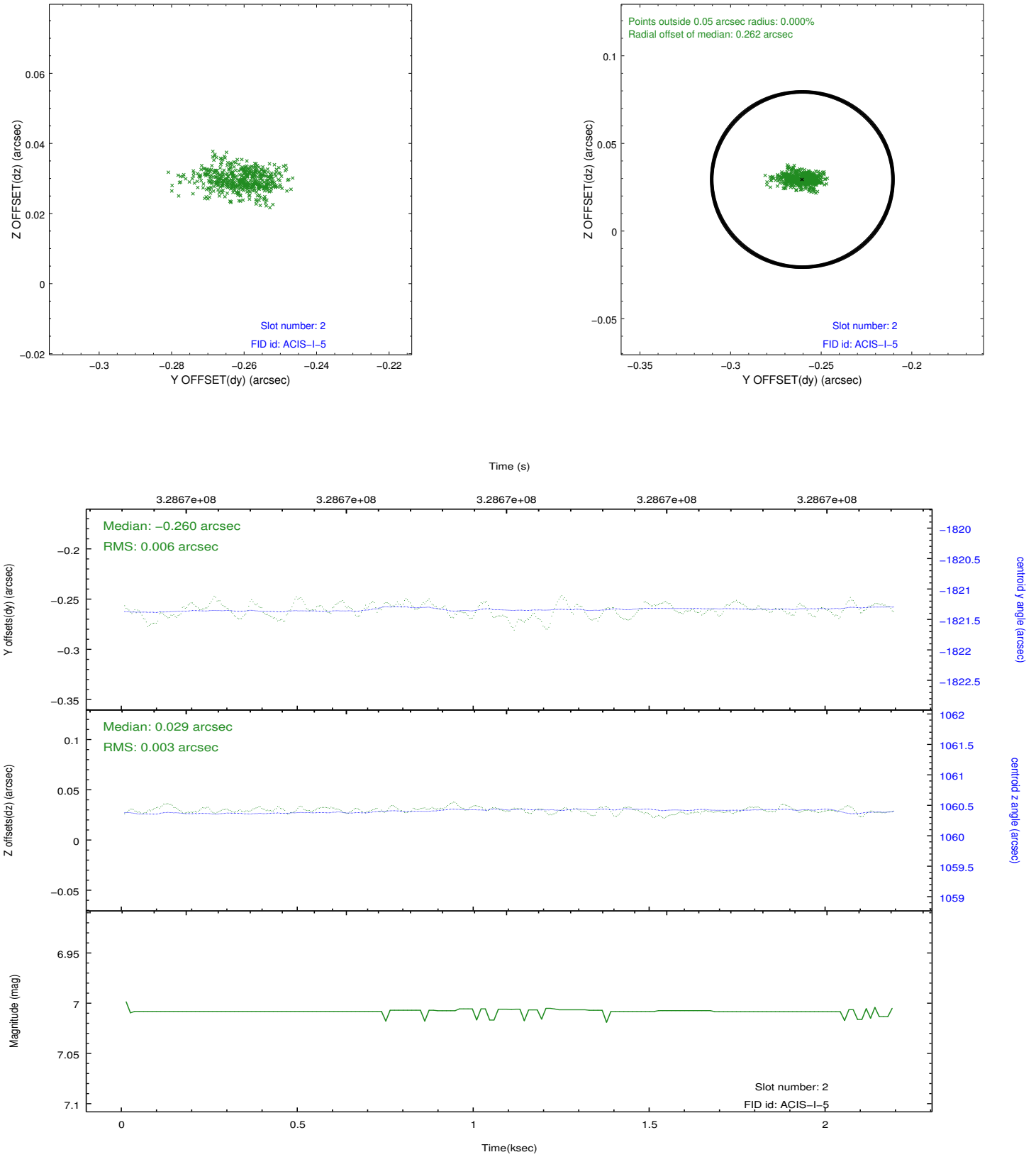
2.5.1 Slot 0



2.5.2 Slot 1



2.5.3 Slot 2



A Summary

A.1 Status

V&V Scientist	Jen Lauer
V&V Date (YYYY-MM-DD)	2012.05.21
V&V Edition	1
V&V Disposition and Status	OK
V&V Charge Time	2.18240001

A.2 Comments