

V&V Reference Report

L2 ASCDS Version : 8.4.4

Observation 8909 - L2 Version 2
Chandra X-Ray Center

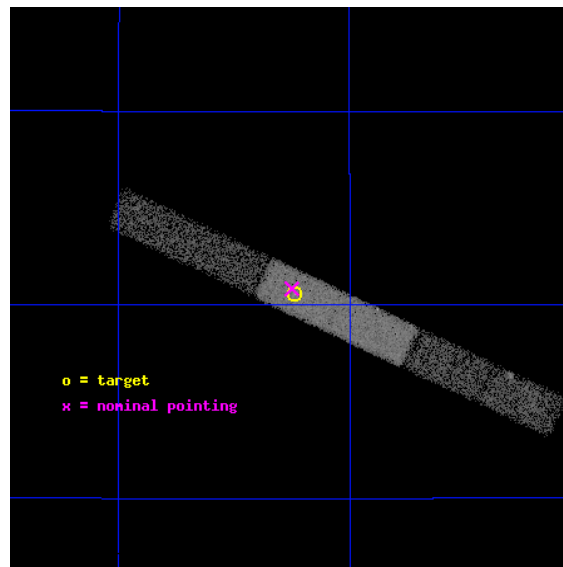
L2 Processing Date : May 9 2012

Contents

1	Front	2
2	OBI	3
2.1	OBI	3
2.1.1	Images	3
2.1.2	Bias	3
2.1.3	Parameters	4
2.1.4	Events	4
2.2	Compared Parameters	5
2.3	Aspect	6
2.4	Star Slots	9
2.4.1	Slot 3	9
2.4.2	Slot 4	10
2.4.3	Slot 5	11
2.4.4	Slot 6	12
2.4.5	Slot 7	13
2.5	FID Slots	14
2.5.1	Slot 0	14
2.5.2	Slot 1	15
2.5.3	Slot 2	16
A	Summary	17
A.1	Status	17
A.2	Comments	17

1 Front

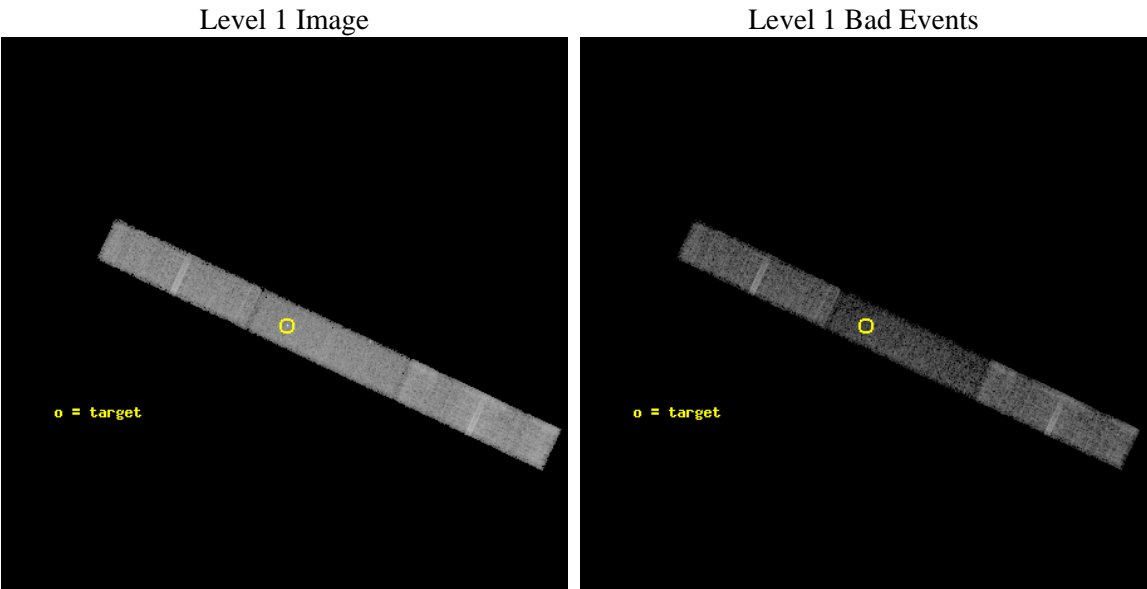
seq_num	200490	Sequence number
obs_id	8909	Observation id
title	A Survey of X-ray Emission from Nitrogen-rich Wolf-Rayet Stars	Pro
observer	Dr. Stephen Skinner	Principal investigator
object	WR 134	Source name
dtcycle	0	
cycle	P	events from which exps? Prim/Second/Both
ra_targ	302.559167	Observer's specified target RA [deg]
dec_targ	36.176417	Observer's specified target Dec [deg]
ra_nom	302.56246882328	Nominal RA [deg]
dec_nom	36.180500581335	Nominal Dec [deg]
roll_nom	25.138371324225	Nominal Roll [deg]
revision	2	Processing version of data
ontime	20181.59946537	Sum of GTIs [s]
livetime	19301.453199474	Livetime [s]
ontime6	20181.59946537	Sum of GTIs [s]
ontime7	20181.59946537	Sum of GTIs [s]
ontime8	20181.59946537	Sum of GTIs [s]
l2events	32983	Number of level 2 events



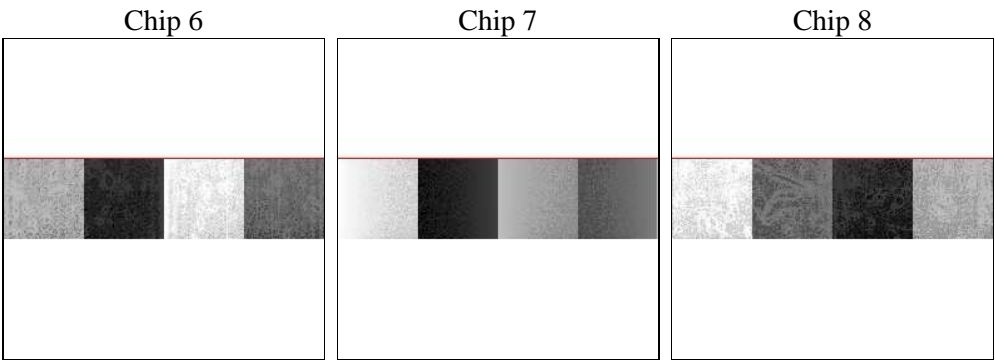
2 OBI

2.1 OBI

2.1.1 Images



2.1.2 Bias



2.1.3 Parameters

obi_num	0	Obi number	sched_exp_time	20000.000000	[s] Scheduled observation exposure time
ascdsver	8.4.4	Processing system revision	ontime	20181.59946537	Sum of GTIs [s]
caldsver	4.4.9	 	ontime6	20181.59946537	Sum of GTIs [s]
date	2012-05-09T05:21:18	Date and time of file creation	ontime7	20181.59946537	Sum of GTIs [s]
revision	2	Processing version of data	ontime8	20181.59946537	Sum of GTIs [s]
			l1events	175174	Number of level 1 events

2.1.4 Events

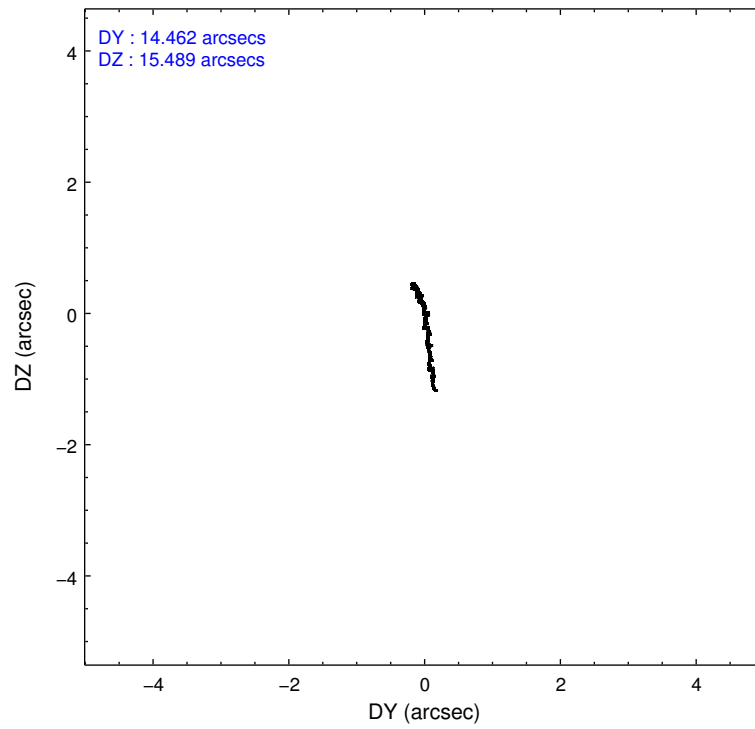
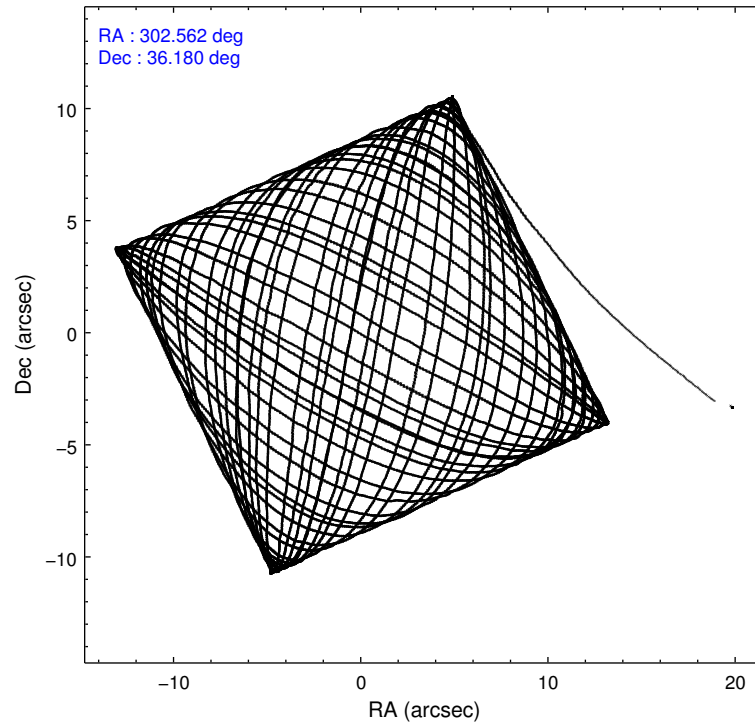
	ccd 6	ccd 7	ccd 8
level 1 events	52897	50782	71495
rejected events	47424	26526	56306
rejected %	89%	52%	78%

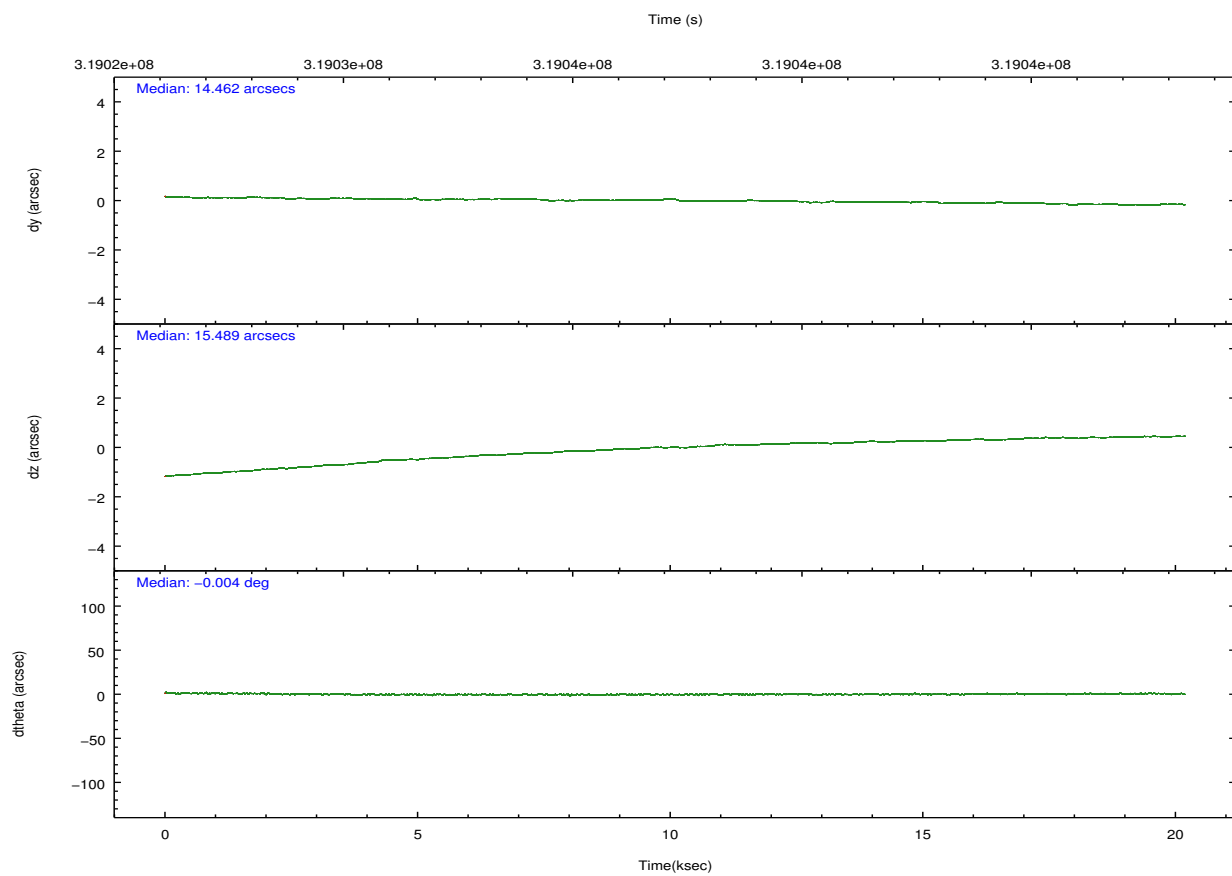
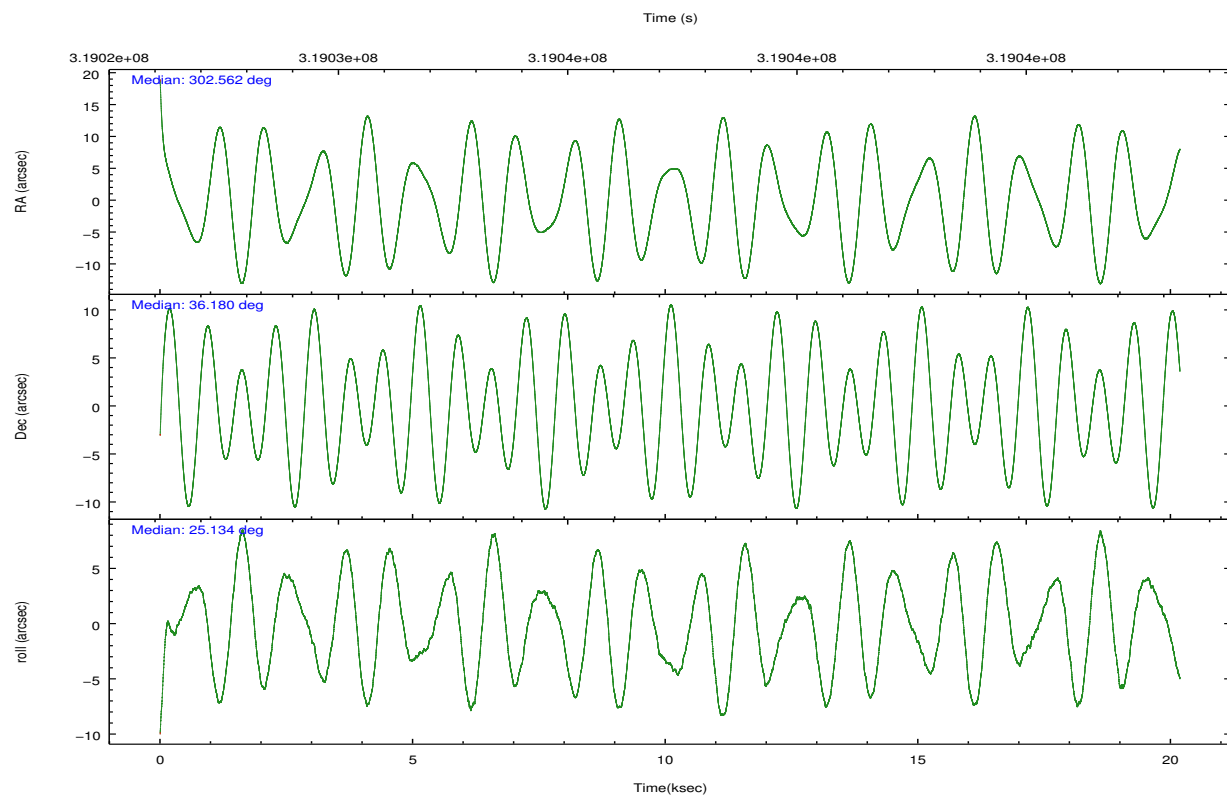
	ccd 6	ccd 7	ccd 8
grade 0 events	1784	2760	4419
	3%	5%	6%
grade 1 events	12	69	35
	0%	0%	0%
grade 2 events	1071	5316	3403
	2%	10%	4%
grade 3 events	913	2934	1775
	1%	5%	2%
grade 4 events	881	2761	1770
	1%	5%	2%
grade 5 events	1769	5309	2501
	3%	10%	3%
grade 6 events	1036	11418	4523
	1%	22%	6%
grade 7 events	45431	20215	53069
	85%	39%	74%

2.2 Compared Parameters

Parameter	Planned	Actual	Parameter	Planned	Actual
Instrument	ACIS	ACIS	Obspar format version number	7	7
Detector	ACIS-678	ACIS-678	Obspar file type	PREDICTED	ACTUAL
Grating	NONE	NONE	Obspar update status	NONE	UPDATED
Data mode	FAINT	FAINT	Number of optional ACIS chips dropped	0	0
Observation mode	POINTING	POINTING	On-chip summing requested	N	N
[deg] Pointing RA	302.543479	302.5624688232774	Subarray requested	CUSTOM	1/4
[deg] Pointing Dec	36.157823	36.18050058133495	Subarray start row	385	385
[deg] Pointing Roll	24.992956	25.13837132422454	Subarray row count	256	256
[mm] SIM focus pos	-0.684267	-0.6828225247311905	Alternating exposures requested	N	N
[mm] SIM defocus	0	0.001444936568705701	[s] Primary exposure time	0.000000	0.9
[mm] SIM translation stage pos	-190.132523	-190.1425803651734			
[mm] SIM translation stage offset	0	0.01005778216563158			
[s] Observation start time (MET)	319027324.184000	319026209.89723			
Observation start date	2008-02-10T10:40:59	2008-02-10T10:23:29			
[s] Observation end time (MET)	319047324.184000	319048271.48581			
Observation end date	2008-02-10T16:14:19	2008-02-10T16:31:11			
Read mode	TIMED	TIMED			

2.3 Aspect



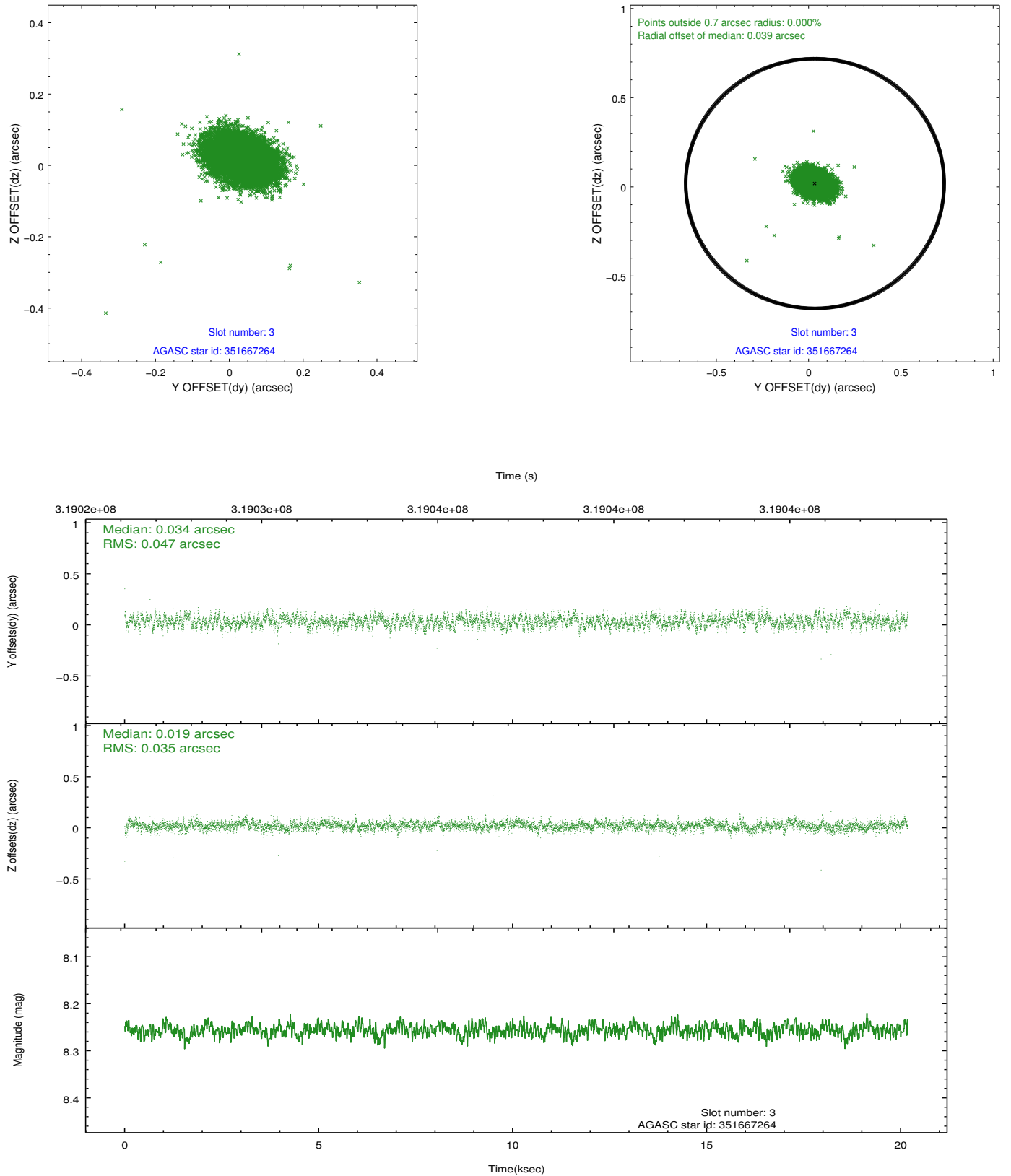


Slot Statistics

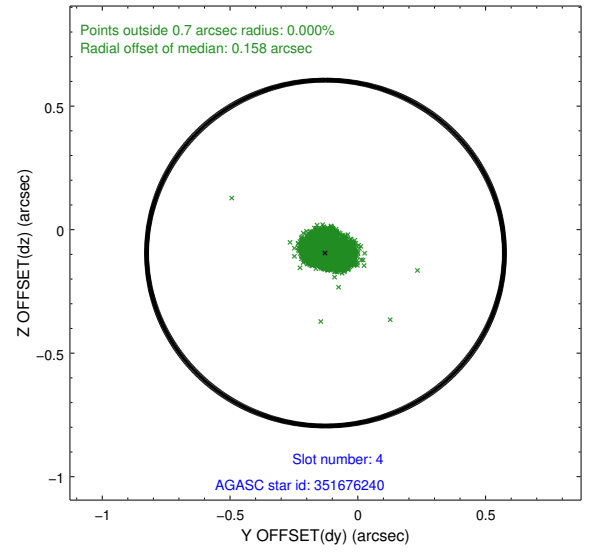
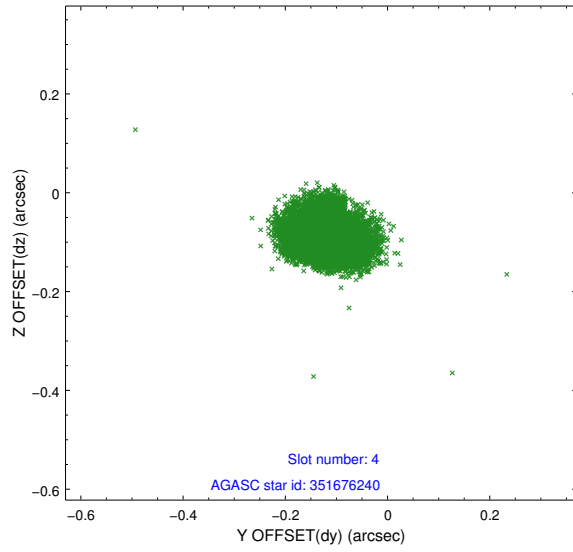
slot	status	id	mag	n_pts	med_dy	med_dz	dr1	dr2	ra	dec	mean_y	mean_z
0	FID	ACIS-S-2	7.09	4924	-0.087	-0.030	0.014	0.025	0.000000	0.000000	-767.48	-1736.74
1	FID	ACIS-S-4	7.19	4924	0.205	0.050	0.012	0.019	0.000000	0.000000	2145.99	171.65
2	FID	ACIS-S-5	7.22	4922	-0.151	-0.010	0.008	0.016	0.000000	0.000000	-1820.16	165.45
3	GUIDE	351667264	8.26	9844	0.034	0.019	0.061	0.101	301.740045	36.396586	-1742.94	1771.39
4	GUIDE	351676240	6.50	9846	-0.127	-0.095	0.054	0.088	302.195311	36.147798	-932.19	396.53
5	GUIDE	351684480	8.24	9846	-0.007	0.088	0.063	0.102	302.973035	36.197373	1192.42	-395.46
6	GUIDE	351693800	8.12	9845	-0.015	-0.002	0.065	0.102	302.737590	35.953172	201.95	-906.24
7	GUIDE	351693304	8.79	9838	0.112	-0.013	0.071	0.115	303.186136	36.652663	2437.79	836.05

2.4 Star Slots

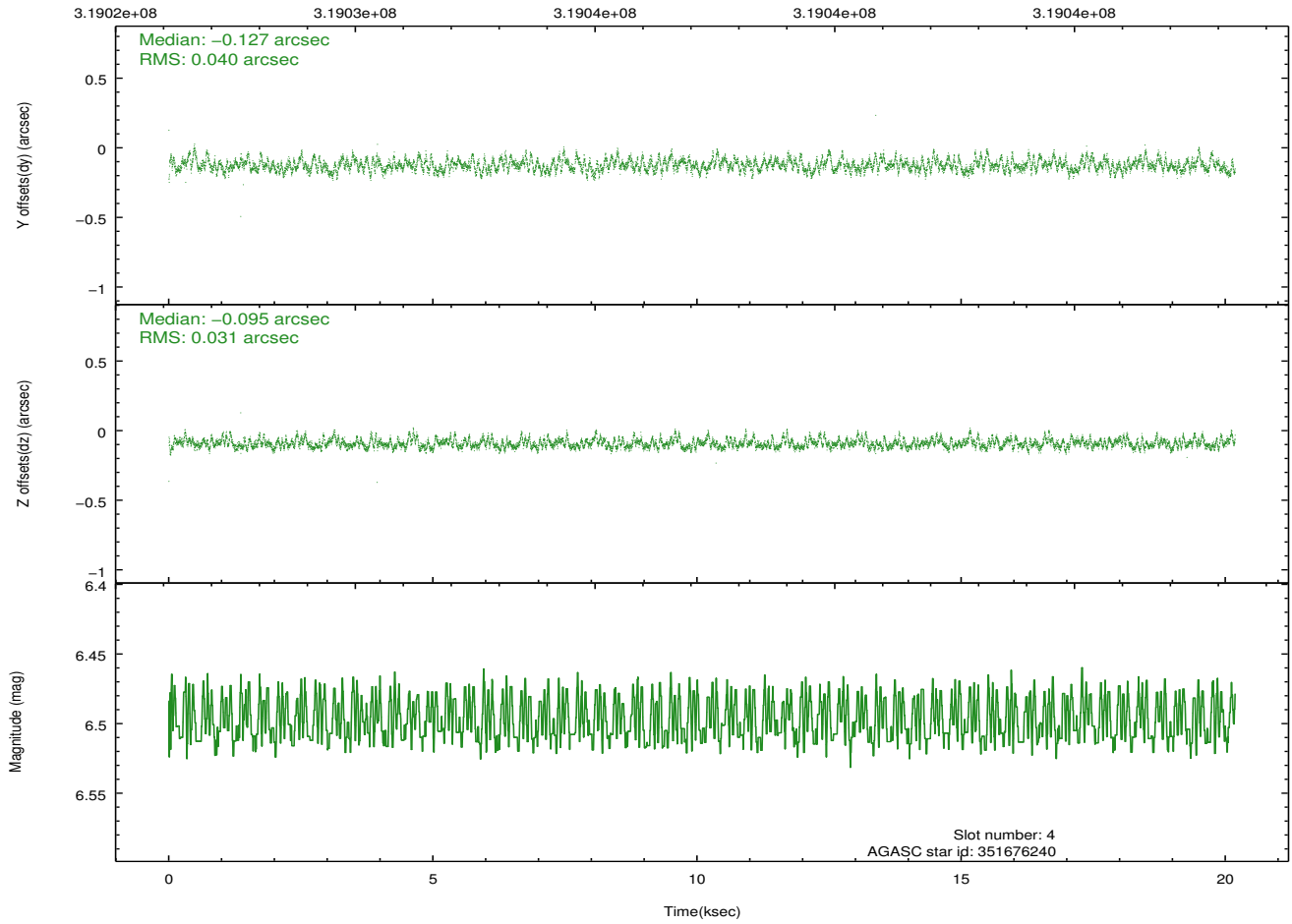
2.4.1 Slot 3



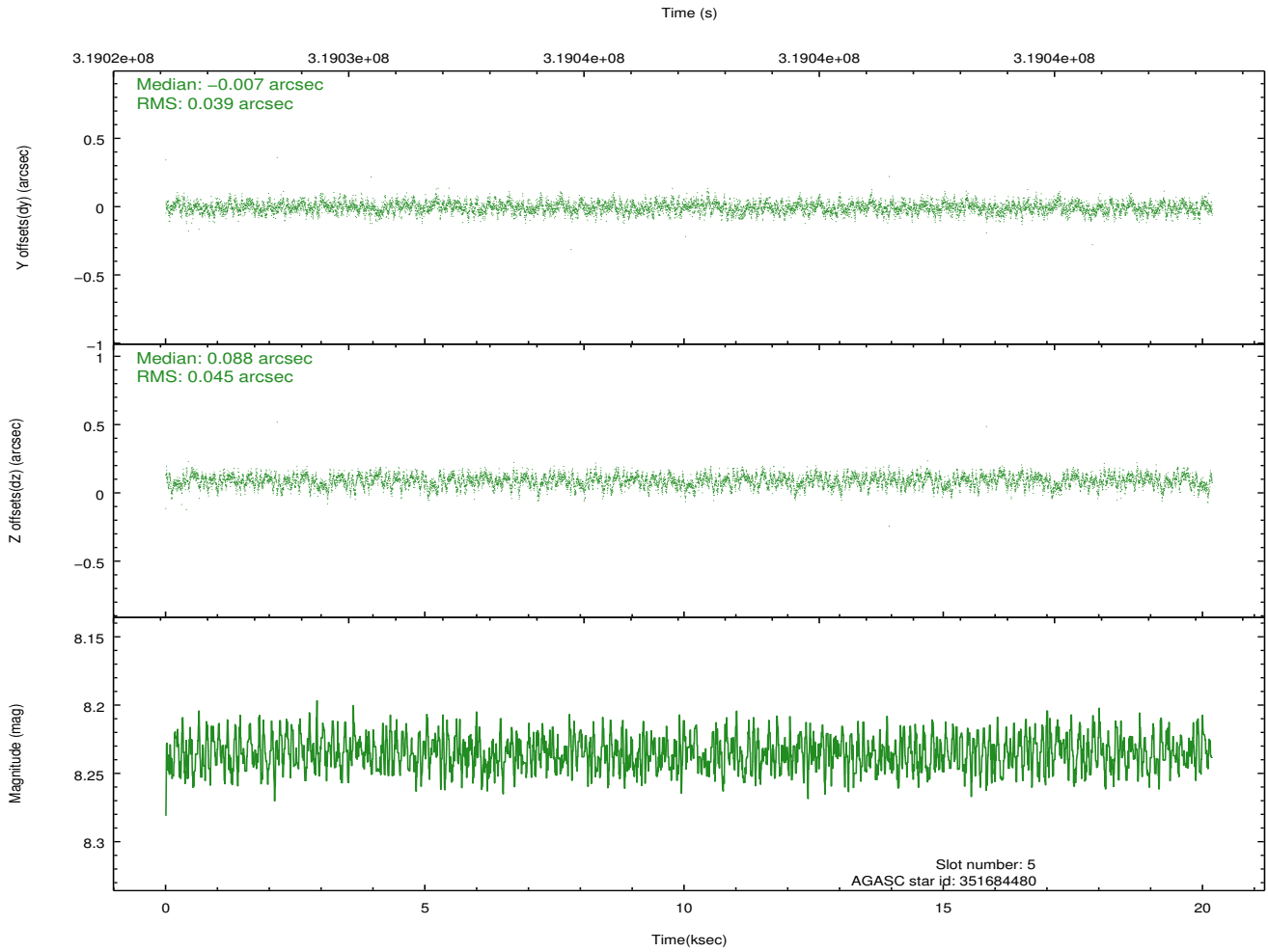
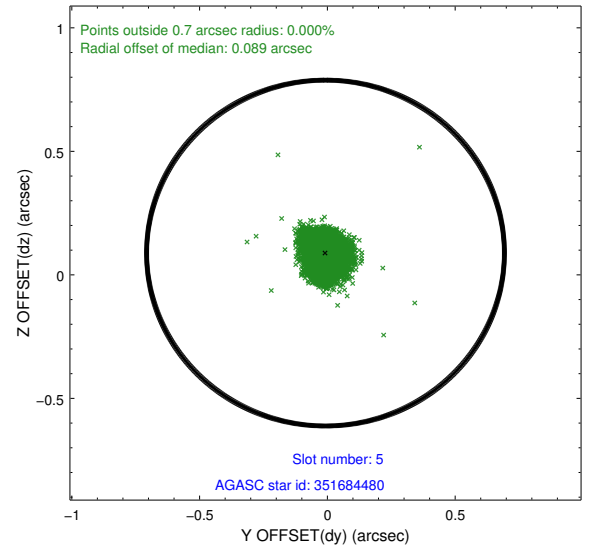
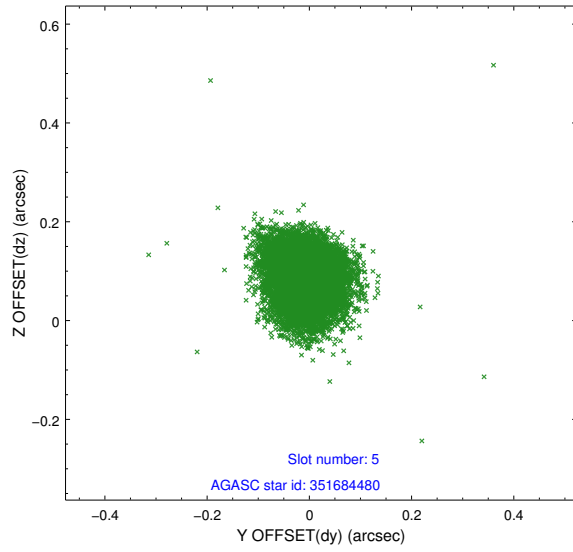
2.4.2 Slot 4



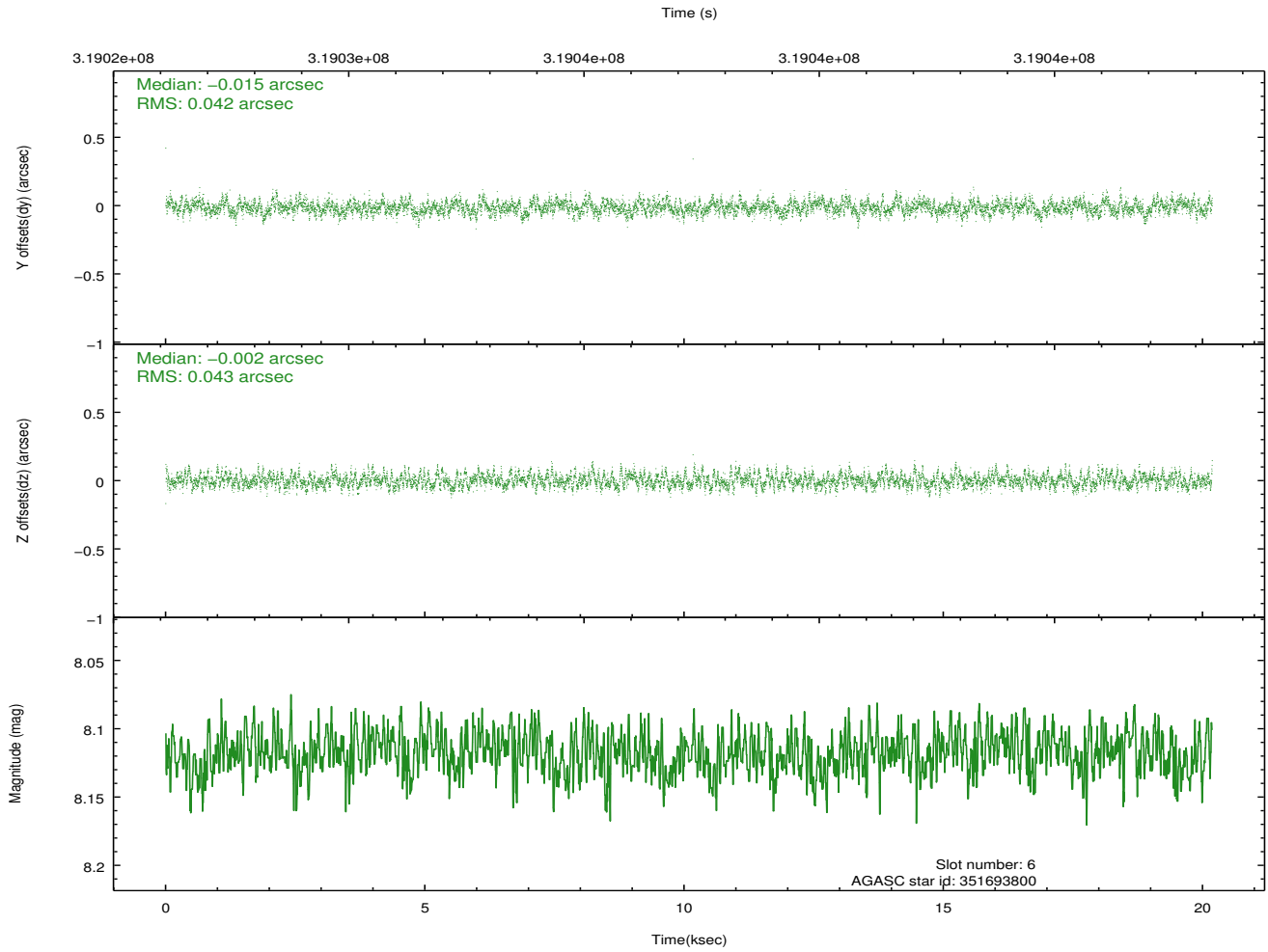
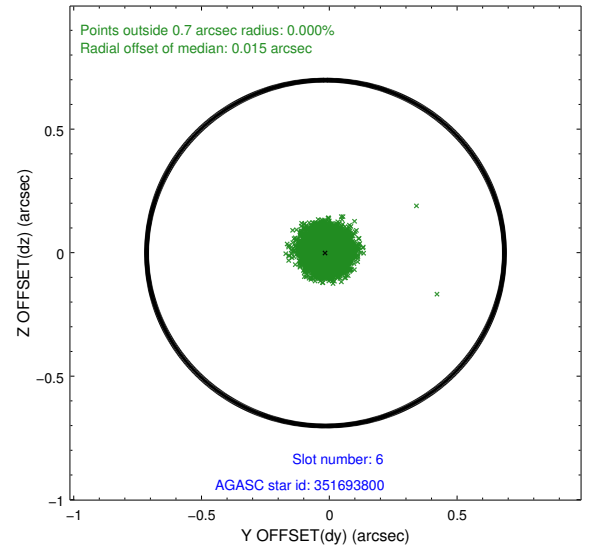
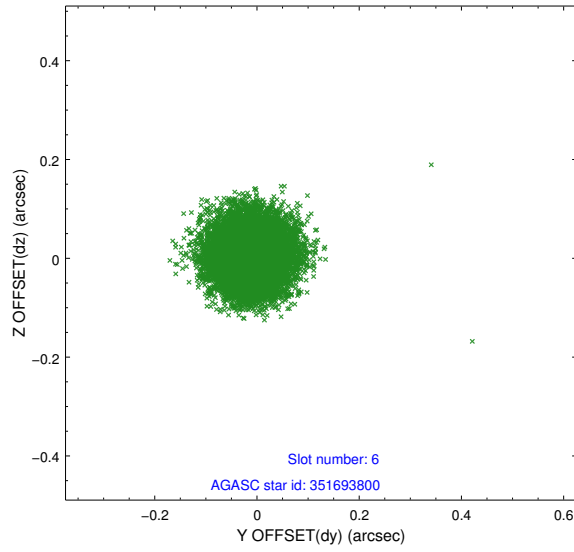
Time (s)



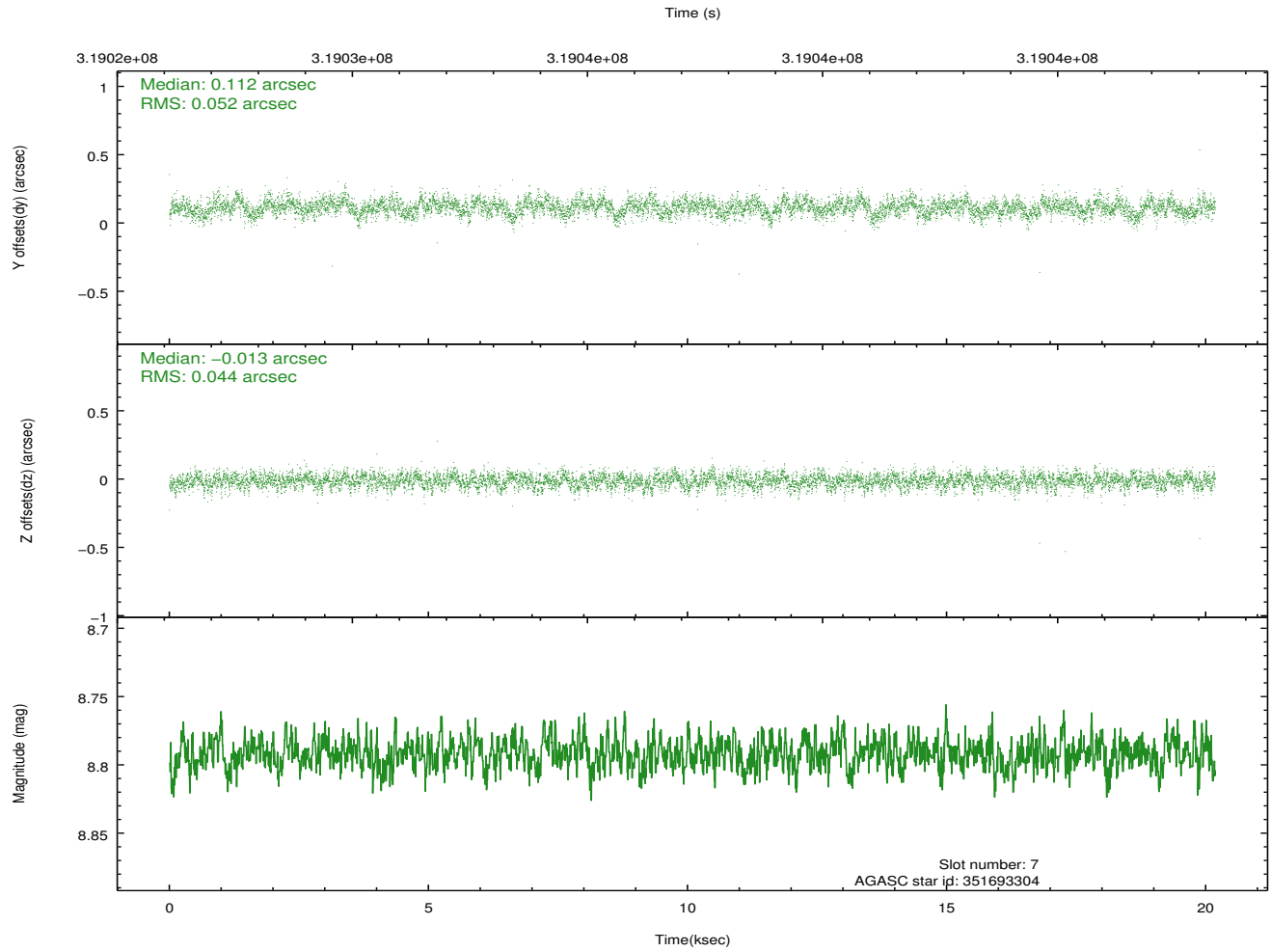
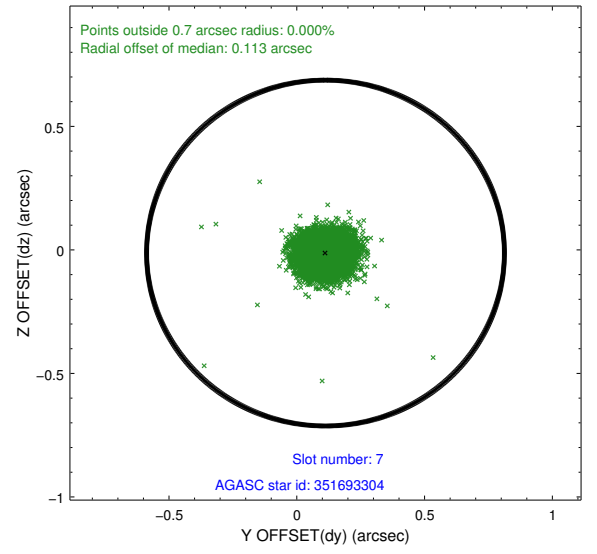
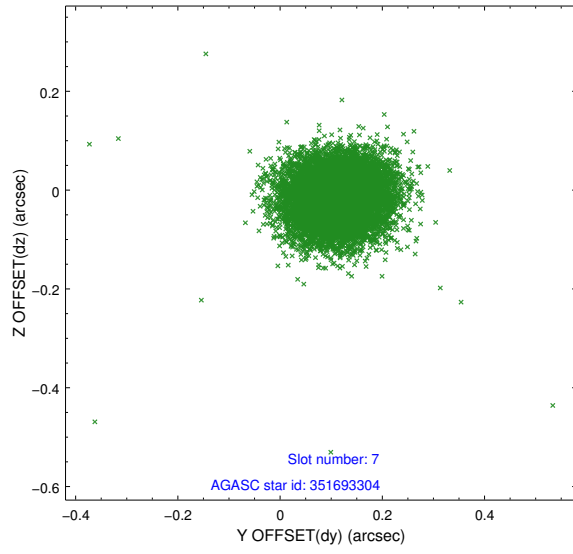
2.4.3 Slot 5



2.4.4 Slot 6

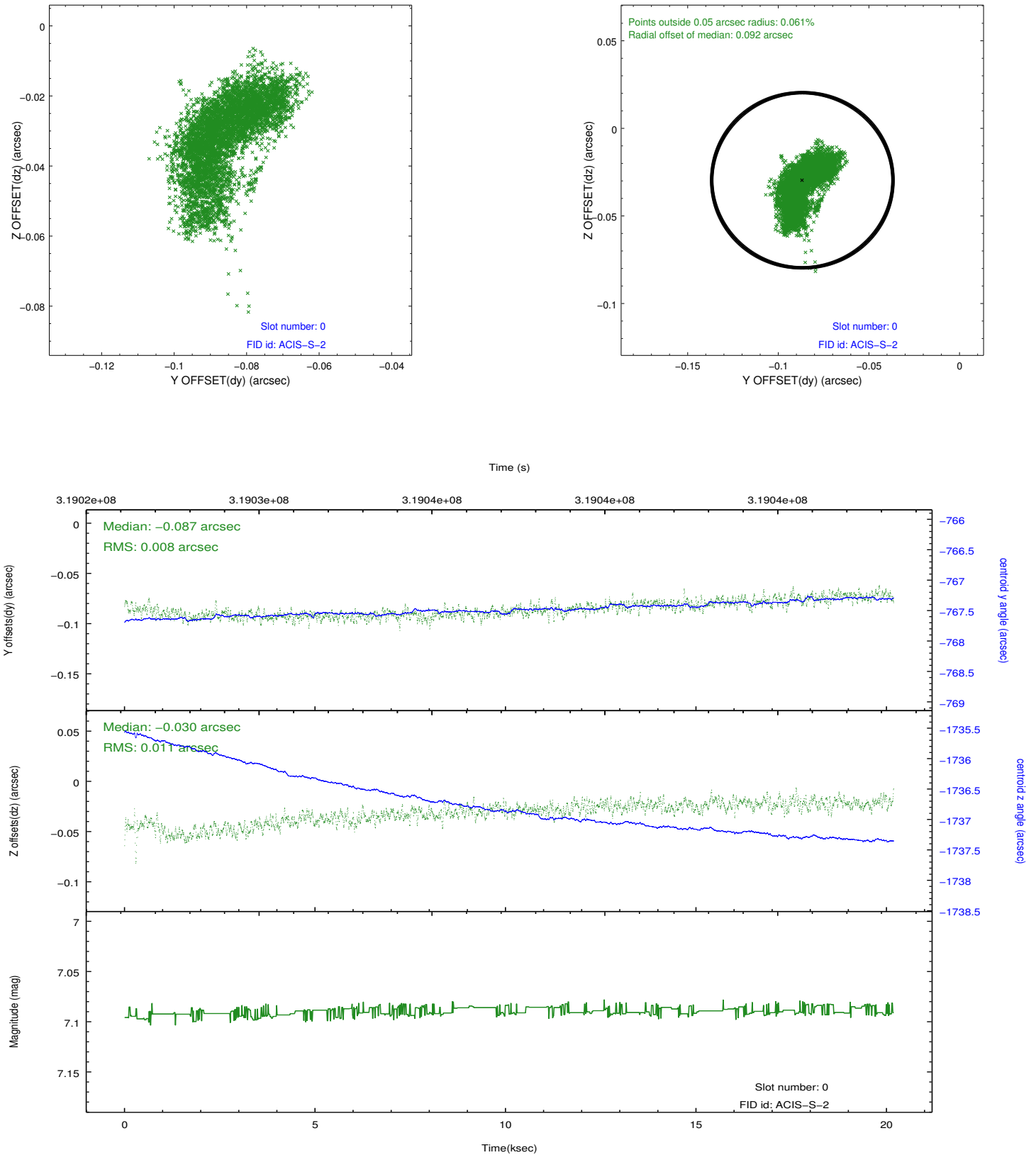


2.4.5 Slot 7

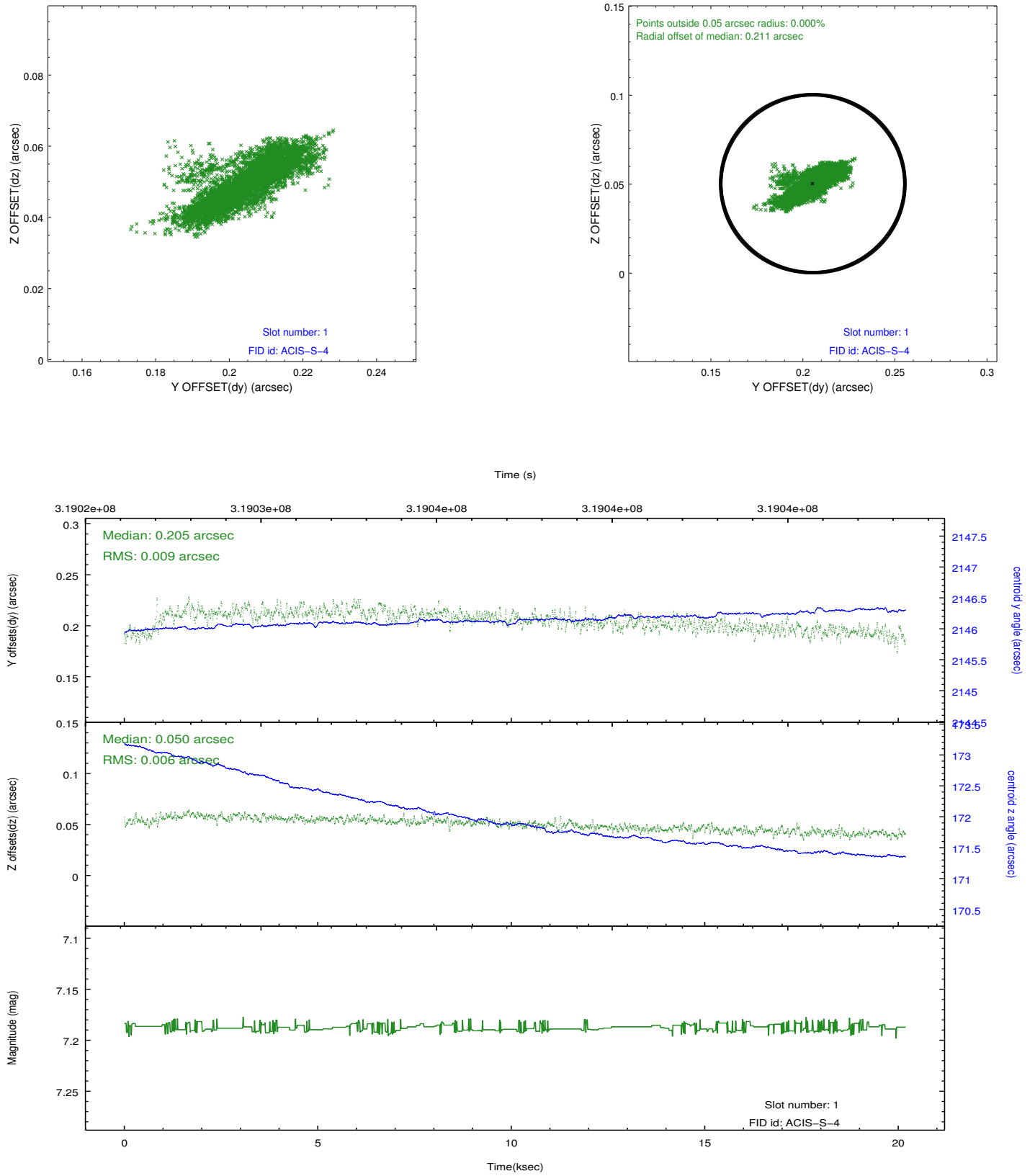


2.5 FID Slots

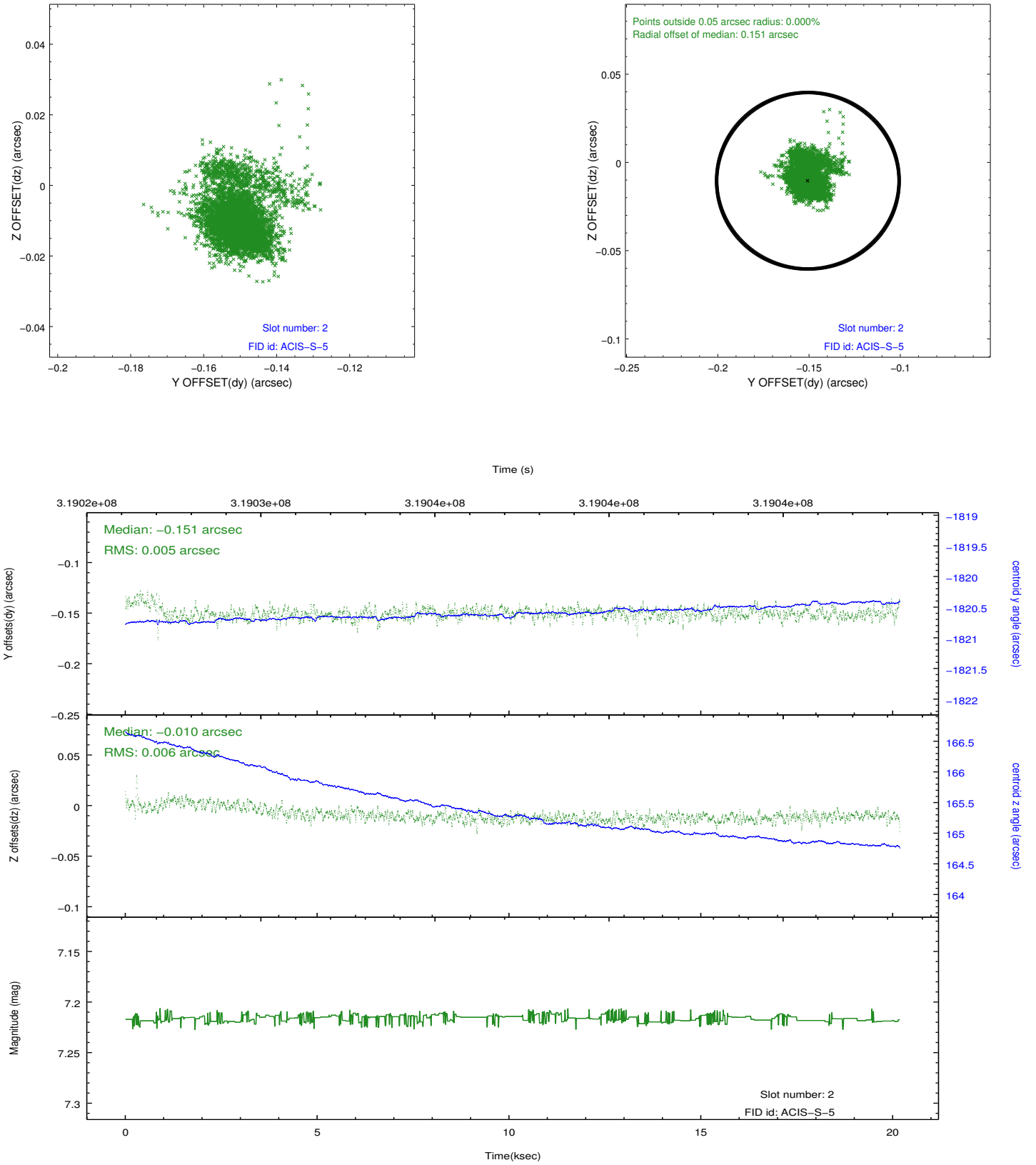
2.5.1 Slot 0



2.5.2 Slot 1



2.5.3 Slot 2



A Summary

A.1 Status

V&V Scientist	Jen Lauer
V&V Date (YYYY-MM-DD)	2012.05.10
V&V Edition	1
V&V Disposition and Status	OK
V&V Charge Time	20.1815994

A.2 Comments