

V&V Reference Report

L2 ASCDS Version : 8.4.4

Observation 8639 - L2 Version 2
Chandra X-Ray Center

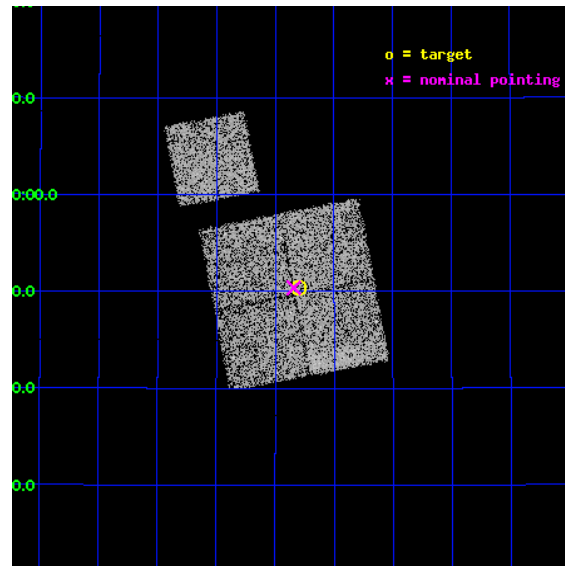
L2 Processing Date : May 5 2012

Contents

1	Front	2
2	OBI	3
2.1	OBI	3
2.1.1	Images	3
2.1.2	Bias	3
2.1.3	Parameters	4
2.1.4	Events	4
2.2	Compared Parameters	5
2.3	Aspect	6
2.4	Star Slots	9
2.4.1	Slot 3	9
2.4.2	Slot 4	10
2.4.3	Slot 5	11
2.4.4	Slot 6	12
2.4.5	Slot 7	13
2.5	FID Slots	14
2.5.1	Slot 0	14
2.5.2	Slot 1	15
2.5.3	Slot 2	16
A	Summary	17
A.1	Status	17
A.2	Comments	17

1 Front

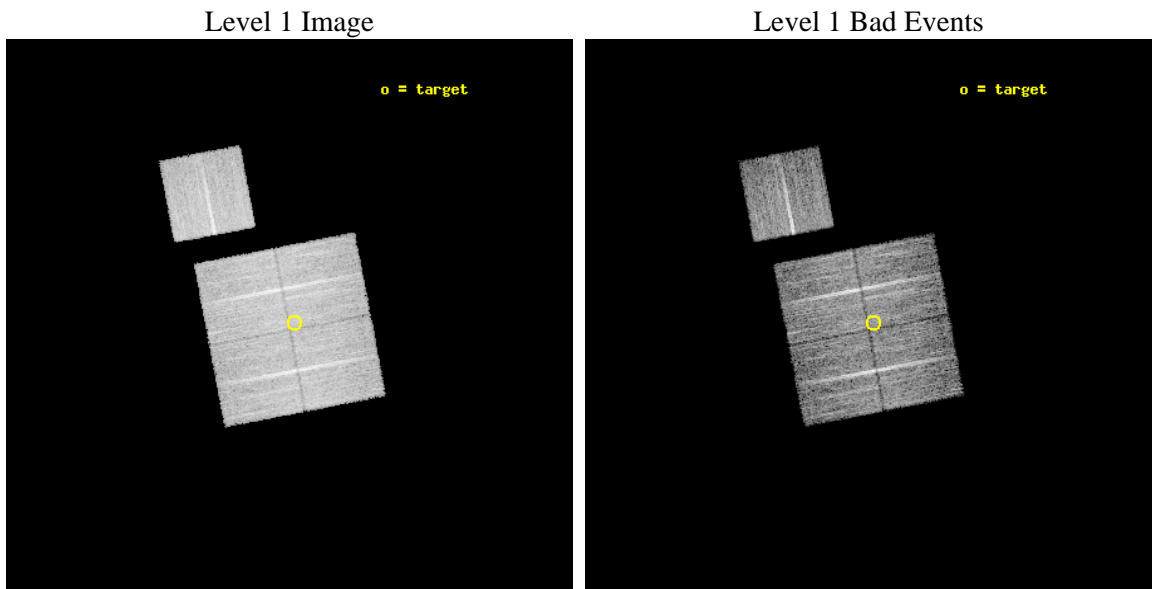
seq_num	900776	Sequence number
obs_id	8639	Observation id
title	Chandra Observations of the DEEP2 Fields	Proposal title
observer	Dr. Stephen Murray	Principal investigator
object	DEEP2 Field 2	Source name
dtcycle	0	
cycle	P	events from which exps? Prim/Second/Both
ra_targ	252.57546	Observer's specified target RA [deg]
dec_targ	34.838918	Observer's specified target Dec [deg]
ra_nom	252.5852457844	Nominal RA [deg]
dec_nom	34.8398000023	Nominal Dec [deg]
roll_nom	349.10309155863	Nominal Roll [deg]
revision	2	Processing version of data
ontime	8716.649682641	Sum of GTIs [s]
livetime	8602.7602374332	Livetime [s]
ontime0	8716.5265825391	Sum of GTIs [s]
ontime1	8716.5676026344	Sum of GTIs [s]
ontime2	8716.6086625457	Sum of GTIs [s]
ontime3	8716.649682641	Sum of GTIs [s]
ontime6	8716.4855226278	Sum of GTIs [s]
l2events	29215	Number of level 2 events



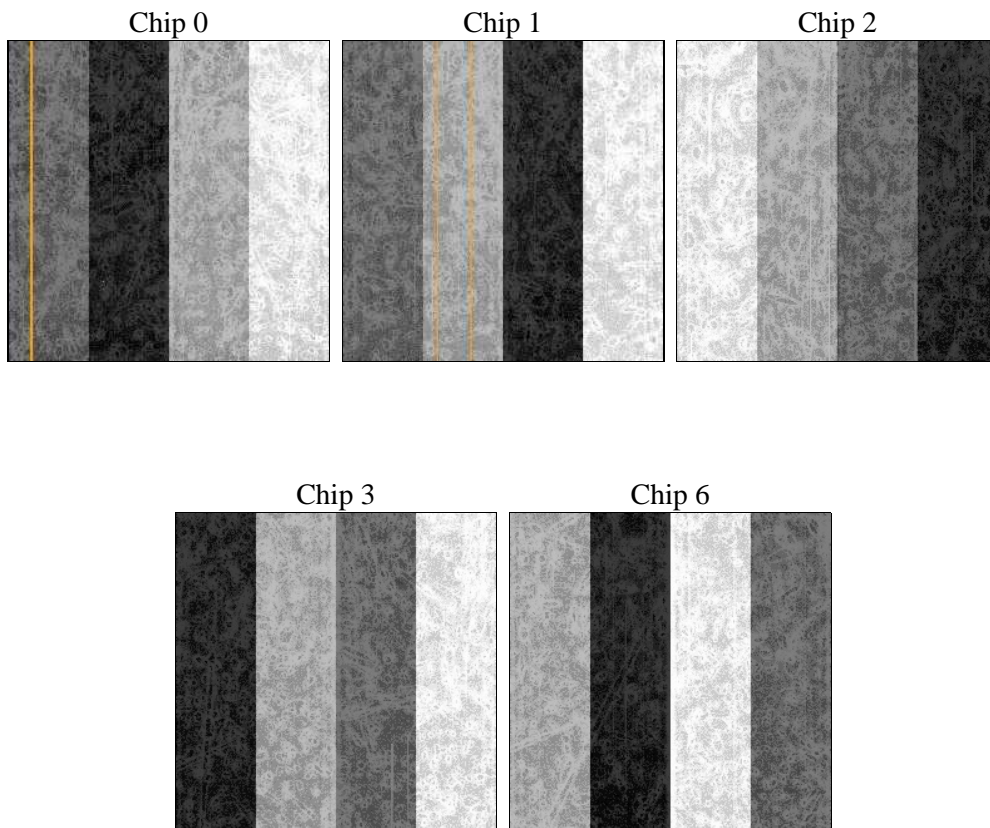
2 OBI

2.1 OBI

2.1.1 Images



2.1.2 Bias



2.1.3 Parameters

obi_num	0	Obi number	sched_exp_time	8941.000000	[s] Scheduled observation exposure time
ascdsver	8.4.4	Processing system revision	ontime	8716.649682641	Sum of GTIs [s]
caldsver	4.4.9	 	ontime0	8716.5265825391	Sum of GTIs [s]
date	2012-05-05T05:18:44	Date and time of file creation	ontime1	8716.5676026344	Sum of GTIs [s]
revision	2	Processing version of data	ontime2	8716.6086625457	Sum of GTIs [s]
			ontime3	8716.649682641	Sum of GTIs [s]
			ontime6	8716.4855226278	Sum of GTIs [s]
			l1events	343528	Number of level 1 events

2.1.4 Events

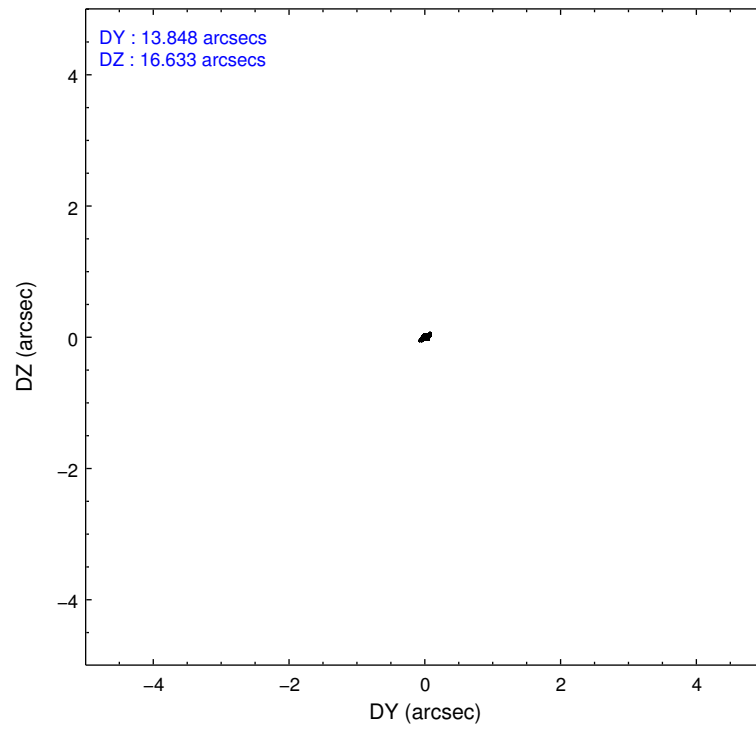
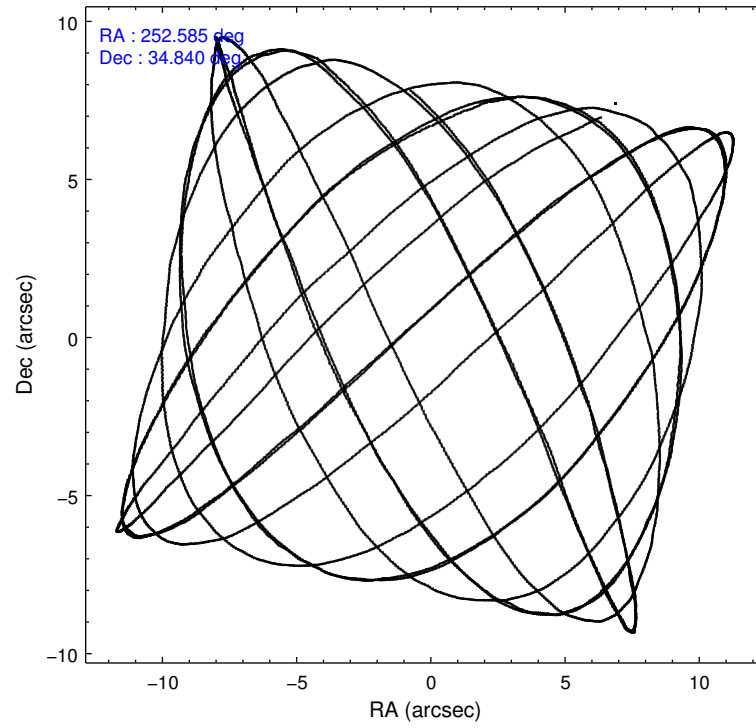
	ccd 0	ccd 1	ccd 2	ccd 3	ccd 6
level 1 events	64791	65587	73258	68975	70917
rejected events	57975	57705	66295	62604	63644
rejected %	89%	87%	90%	90%	89%

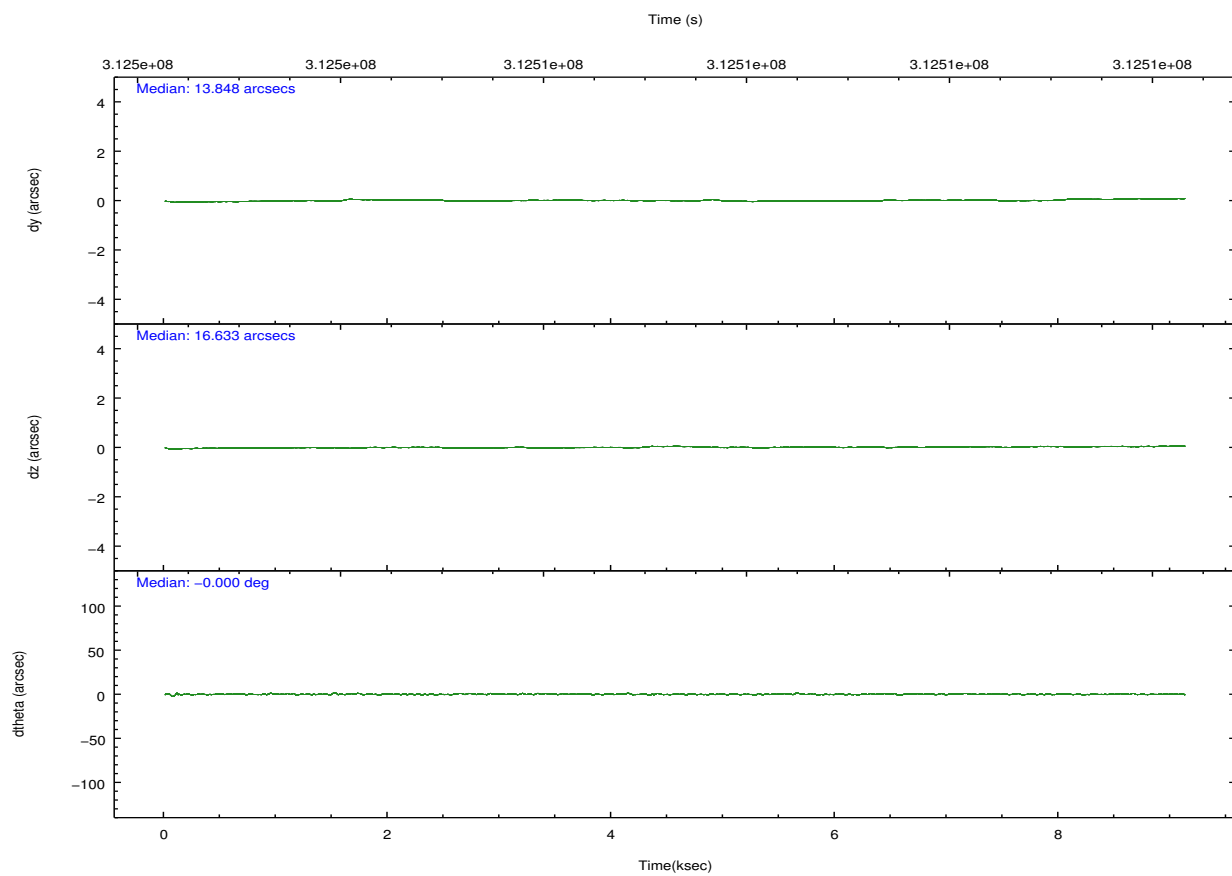
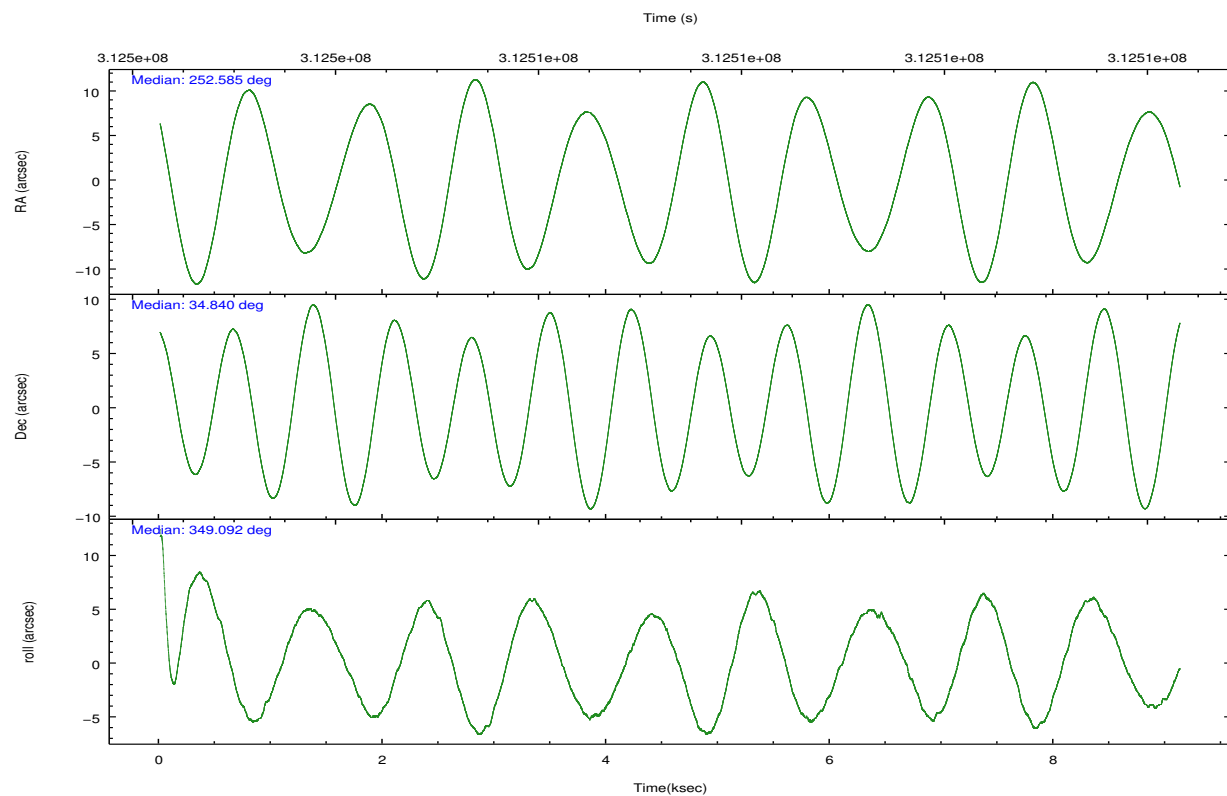
	ccd 0	ccd 1	ccd 2	ccd 3	ccd 6
grade 0 events	2383	2851	2544	2145	2590
	3%	4%	3%	3%	3%
grade 1 events	45	36	48	35	30
	0%	0%	0%	0%	0%
grade 2 events	1598	1822	1644	1405	1572
	2%	2%	2%	2%	2%
grade 3 events	769	863	719	764	757
	1%	1%	0%	1%	1%
grade 4 events	741	799	790	746	771
	1%	1%	1%	1%	1%
grade 5 events	2374	2699	2269	2902	2791
	3%	4%	3%	4%	3%
grade 6 events	1325	1552	1273	1315	1586
	2%	2%	1%	1%	2%
grade 7 events	55556	54965	63971	59663	60820
	85%	83%	87%	86%	85%

2.2 Compared Parameters

Parameter	Planned	Actual	Parameter	Planned	Actual
Instrument	ACIS	ACIS	Obspar format version number	7	7
Detector	ACIS-01236	ACIS-01236	Obspar file type	PREDICTED	ACTUAL
Grating	NONE	NONE	Obspar update status	NONE	UPDATED
Data mode	VFAINT	VFAINT	CCD I0 on	Y	Y
Observation mode	POINTING	POINTING	CCD I1 on	Y	Y
[deg] Pointing RA	252.553629	252.5852457843956	CCD I2 on	Y	Y
[deg] Pointing Dec	34.830714	34.83980000230049	CCD I3 on	Y	Y
[deg] Pointing Roll	348.912467	349.1030915586264	CCD S0 on	N	N
[mm] SIM focus pos	-0.782348	-0.7809083437167272	CCD S1 on	N	N
[mm] SIM defocus	0	0.001439871863259334	CCD S2 on	O1	Y
[mm] SIM translation stage pos	-233.592463	-233.5874344608287	CCD S3 on	N	N
[mm] SIM translation stage offset	0	-0.005018542100998502	CCD S4 on	N	N
[s] Observation start time (MET)	312502917.184000	312502540.70635	CCD S5 on	N	N
Observation start date	2007-11-26T22:20:52	2007-11-26T22:15:40	Number of optional ACIS chips dropped	0	0
[s] Observation end time (MET)	312511858.184000	312511992.23181	On-chip summing requested	N	N
Observation end date	2007-11-27T00:49:53	2007-11-27T00:53:12	Subarray requested	NONE	NONE
Read mode	TIMED	TIMED	Alternating exposures requested	N	N
			[s] Primary exposure time	0.000000	3.1

2.3 Aspect



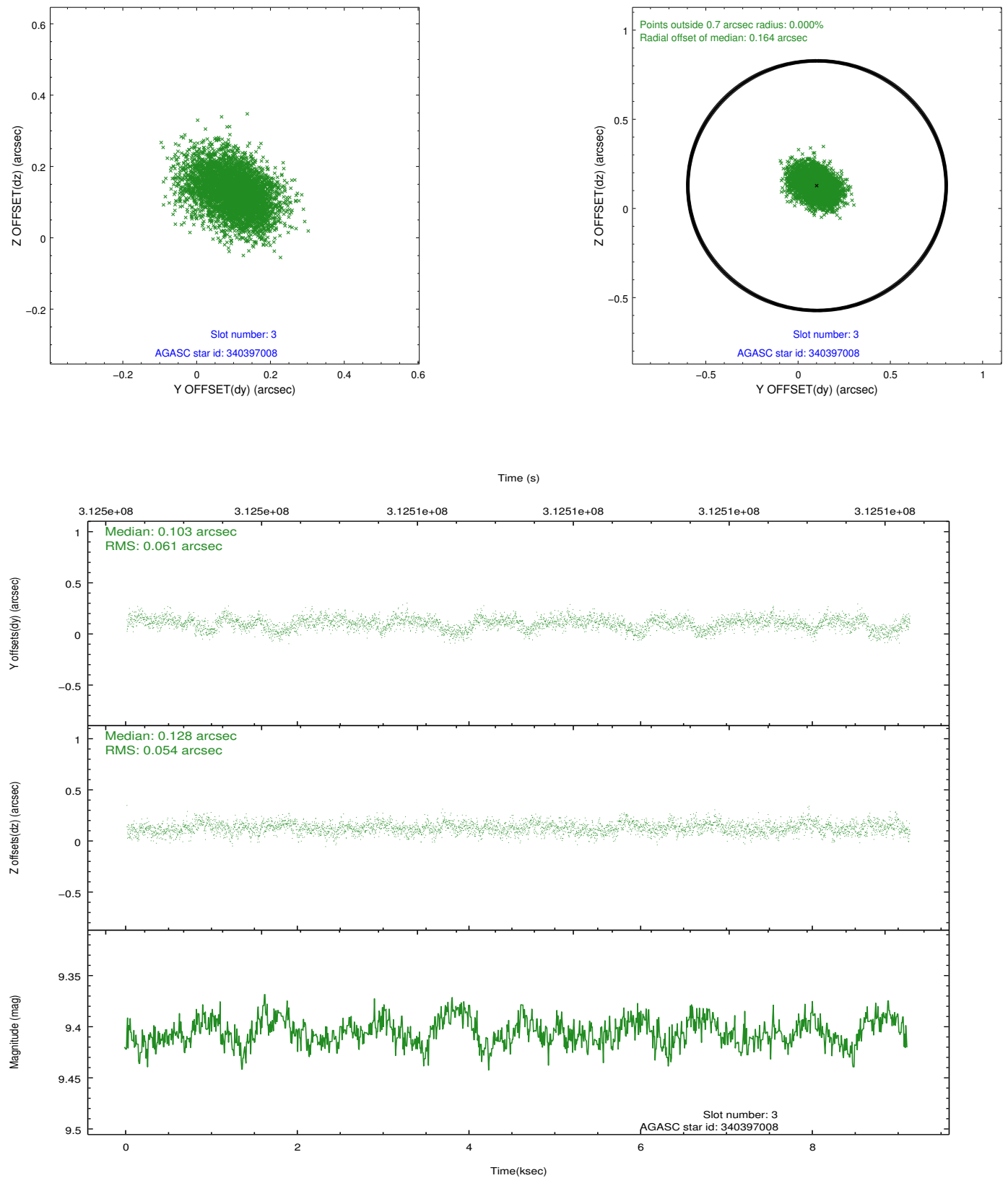


Slot Statistics

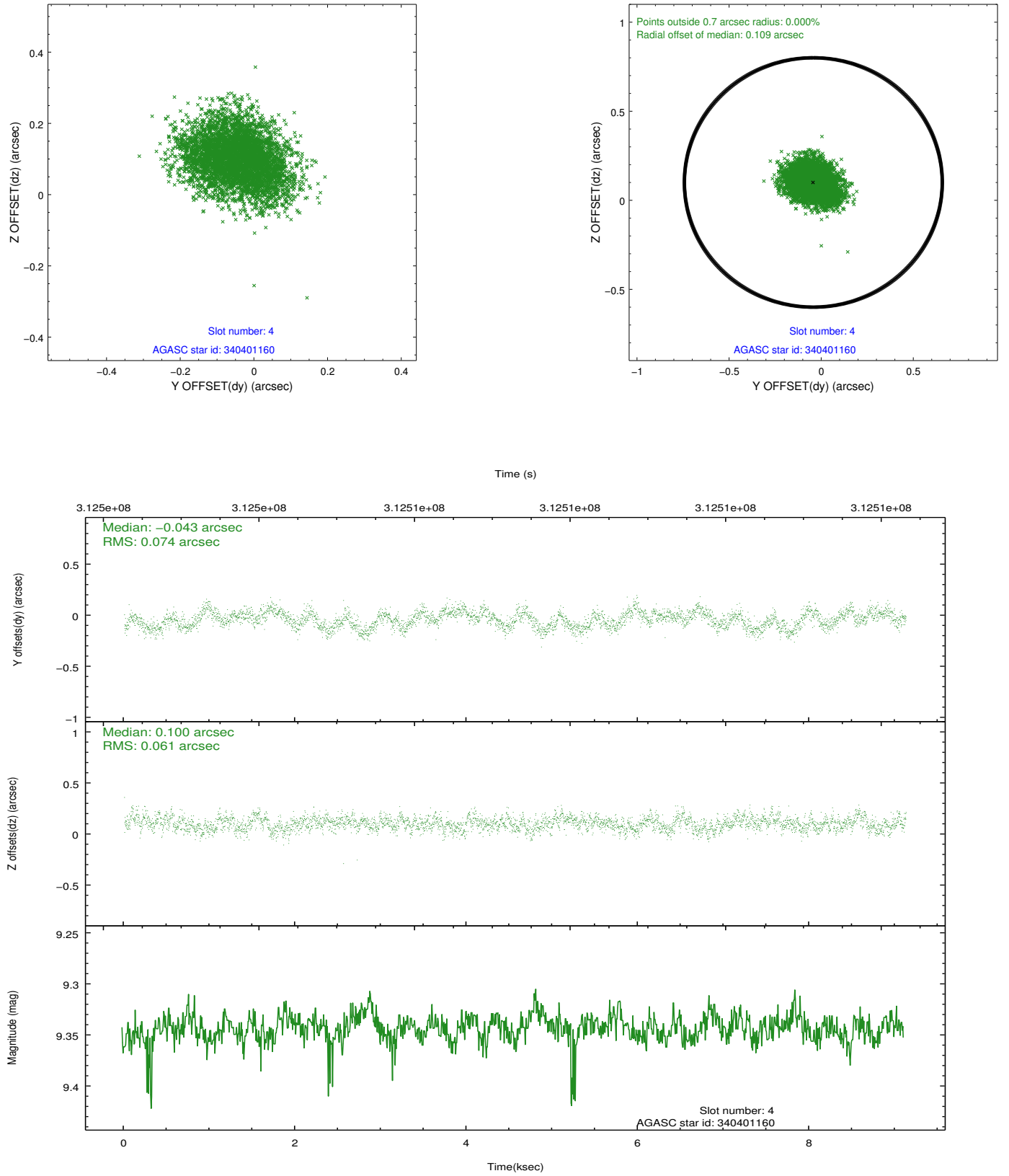
slot	status	id	mag	n_pts	med_dy	med_dz	dr1	dr2	ra	dec	mean_y	mean_z
0	FID	ACIS-I-1	7.22	2225	0.059	-0.031	0.006	0.012	0.000000	0.000000	925.67	-840.33
1	FID	ACIS-I-5	7.22	2225	-0.204	0.064	0.006	0.010	0.000000	0.000000	-1822.32	1057.02
2	FID	ACIS-I-6	7.23	2225	0.053	0.038	0.007	0.012	0.000000	0.000000	390.63	1702.12
3	GUIDE	340397008	9.41	4447	0.103	0.128	0.087	0.144	252.275528	35.284160	-1116.02	1446.12
4	GUIDE	340401160	9.34	4445	-0.043	0.100	0.104	0.164	252.460112	35.243739	-556.04	1407.02
5	GUIDE	340404480	8.10	4449	-0.068	0.013	0.066	0.107	252.719113	34.236377	895.29	-2003.76
6	GUIDE	340405600	8.12	4451	0.024	0.064	0.067	0.106	252.813465	34.289368	1133.40	-1761.96
7	GUIDE	340406200	6.69	4450	-0.017	-0.307	0.063	0.102	252.267621	34.956301	-914.87	282.20

2.4 Star Slots

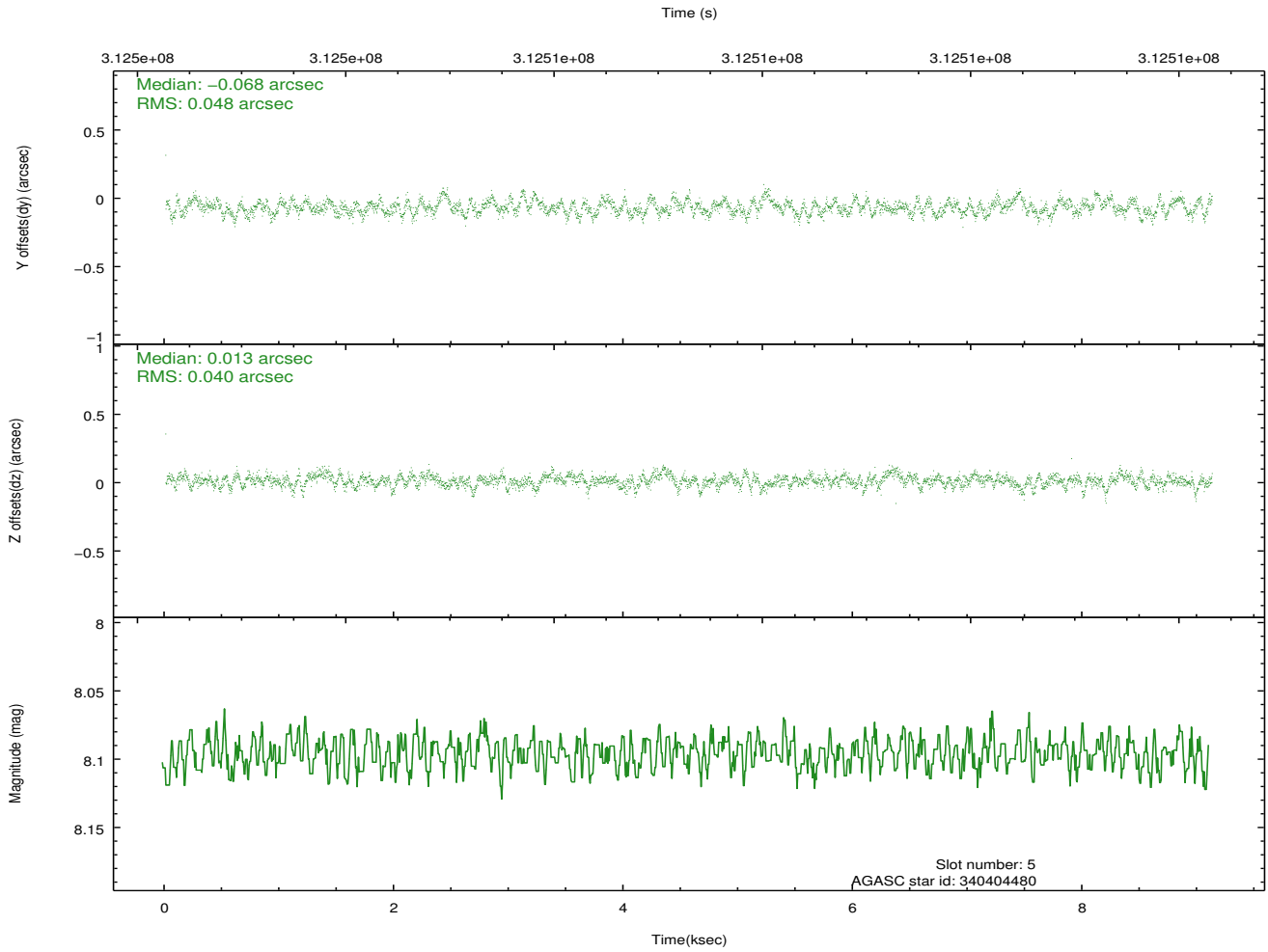
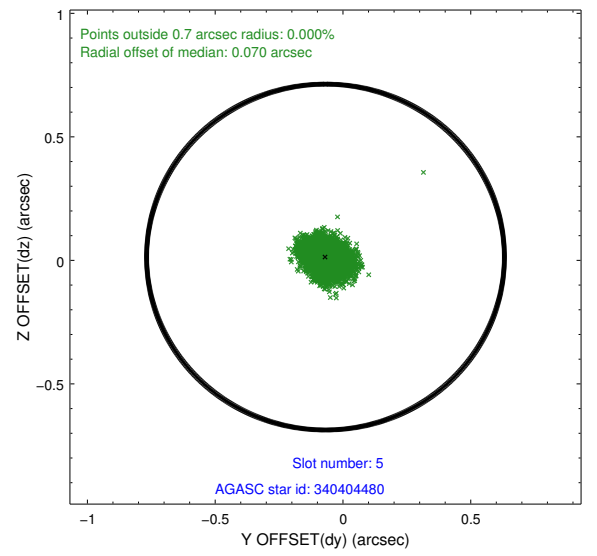
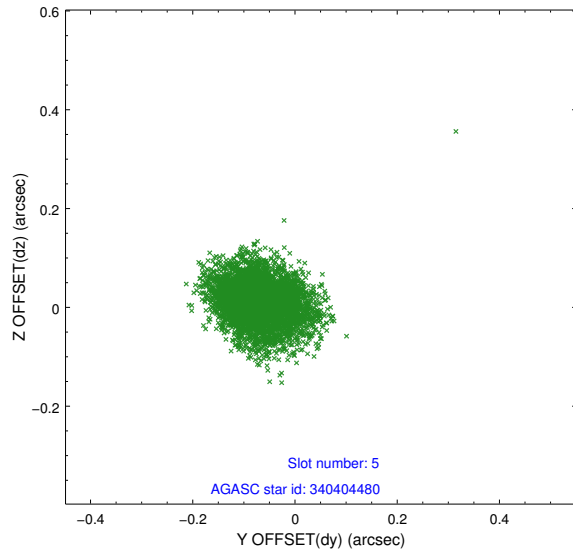
2.4.1 Slot 3



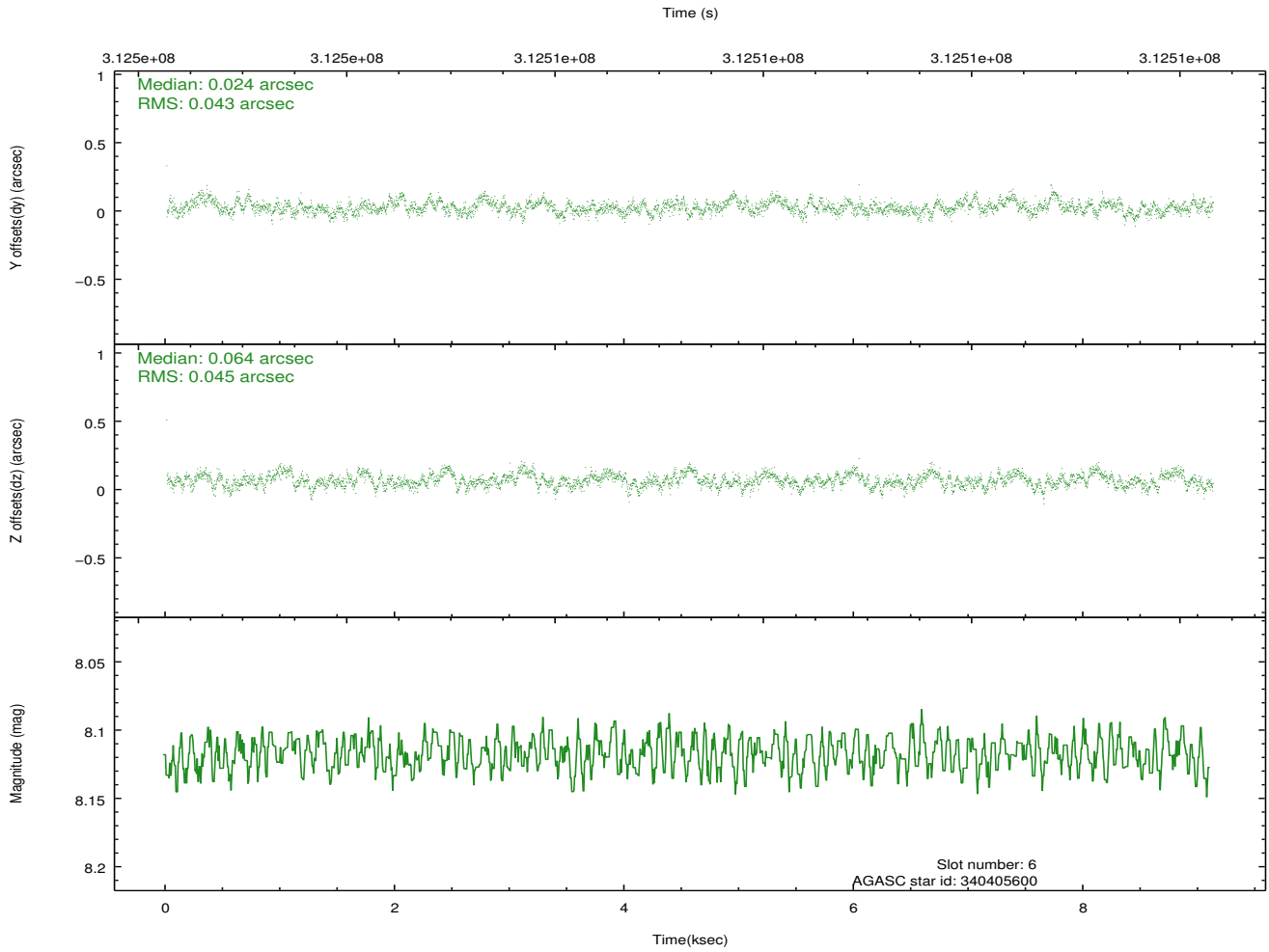
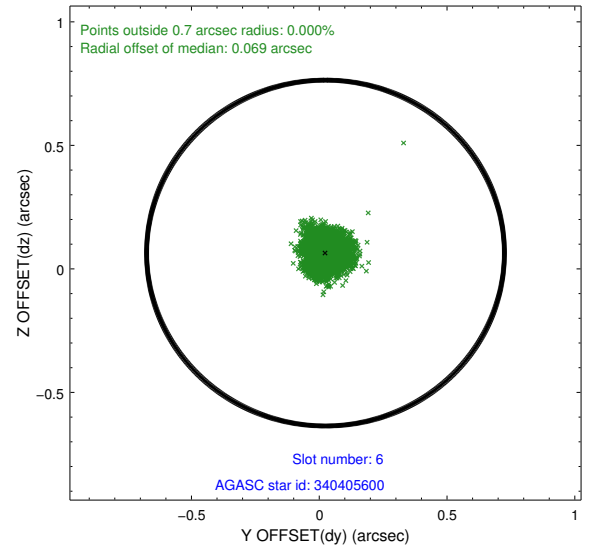
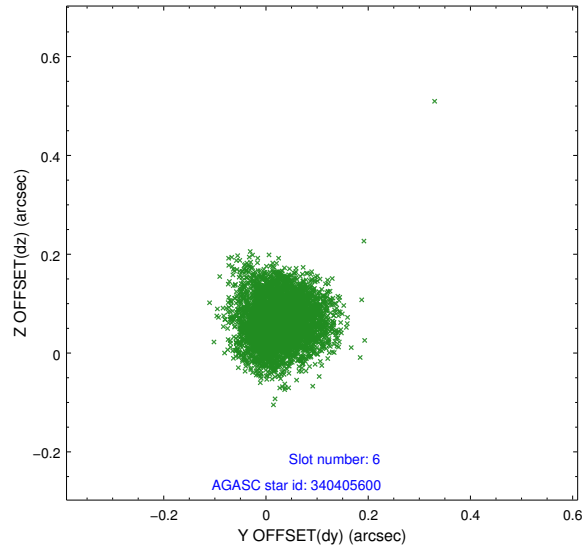
2.4.2 Slot 4



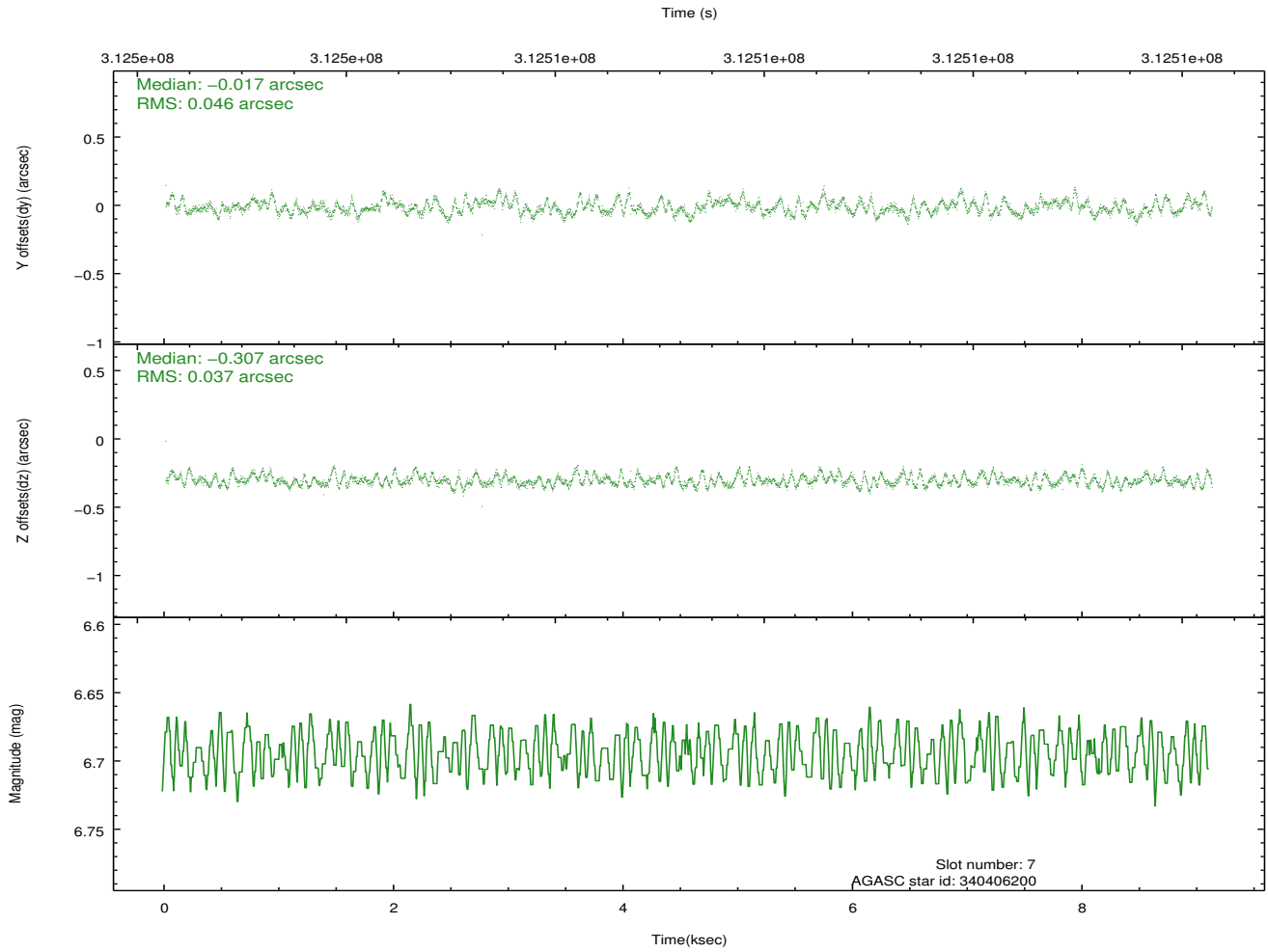
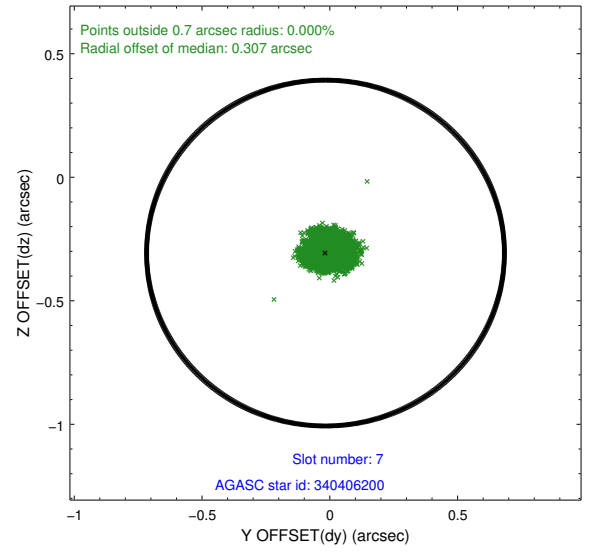
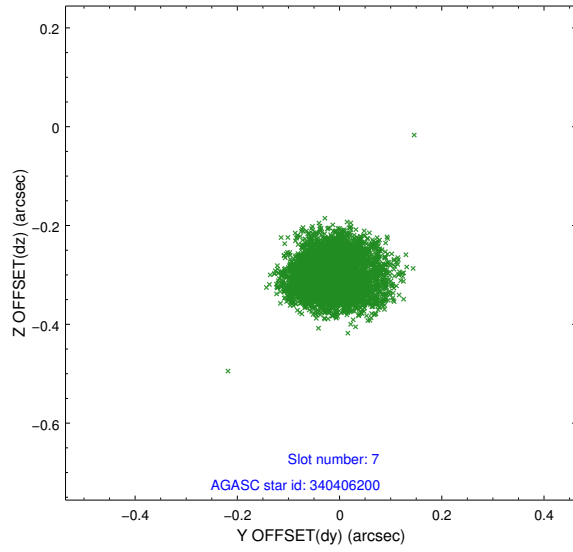
2.4.3 Slot 5



2.4.4 Slot 6

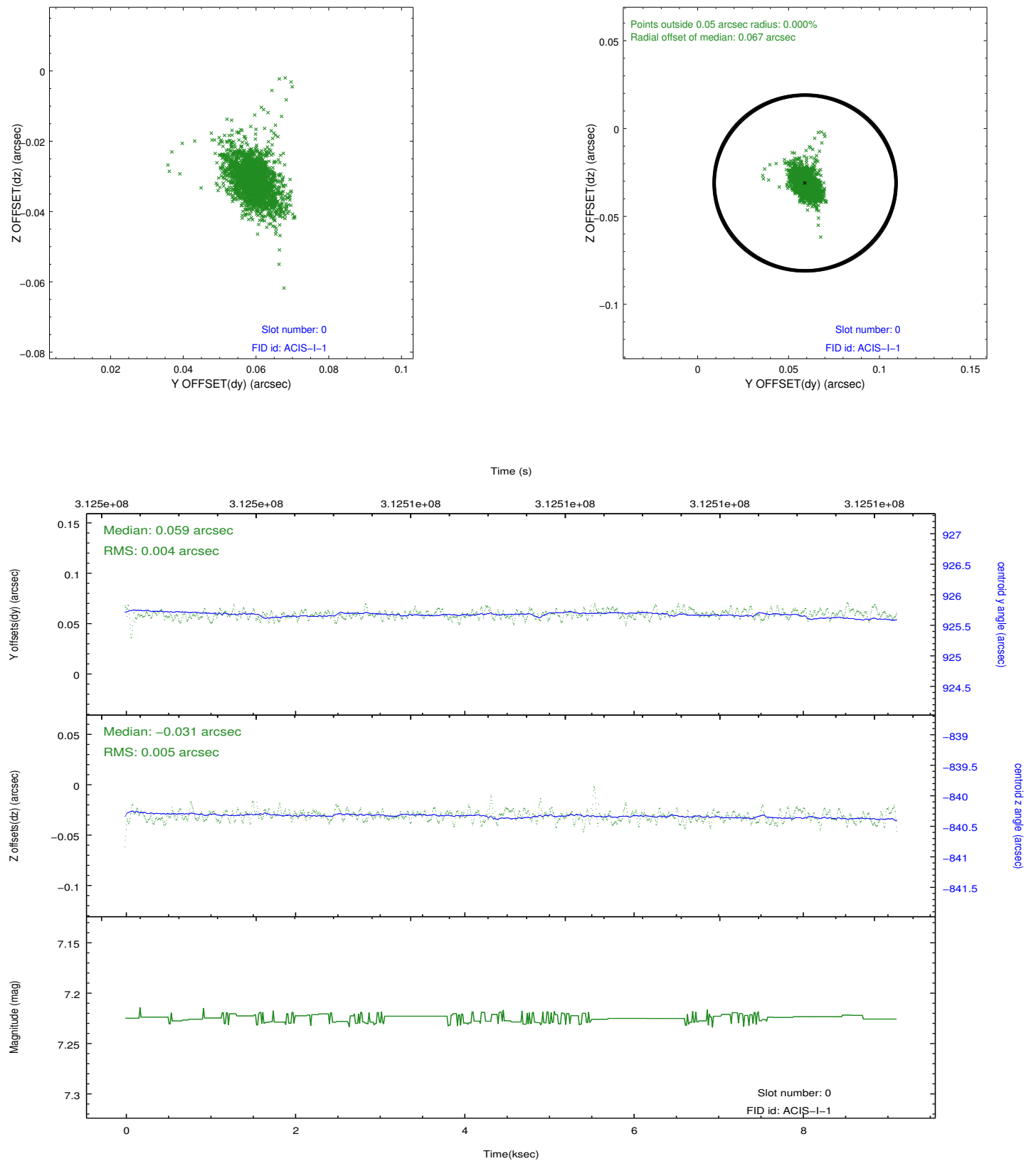


2.4.5 Slot 7

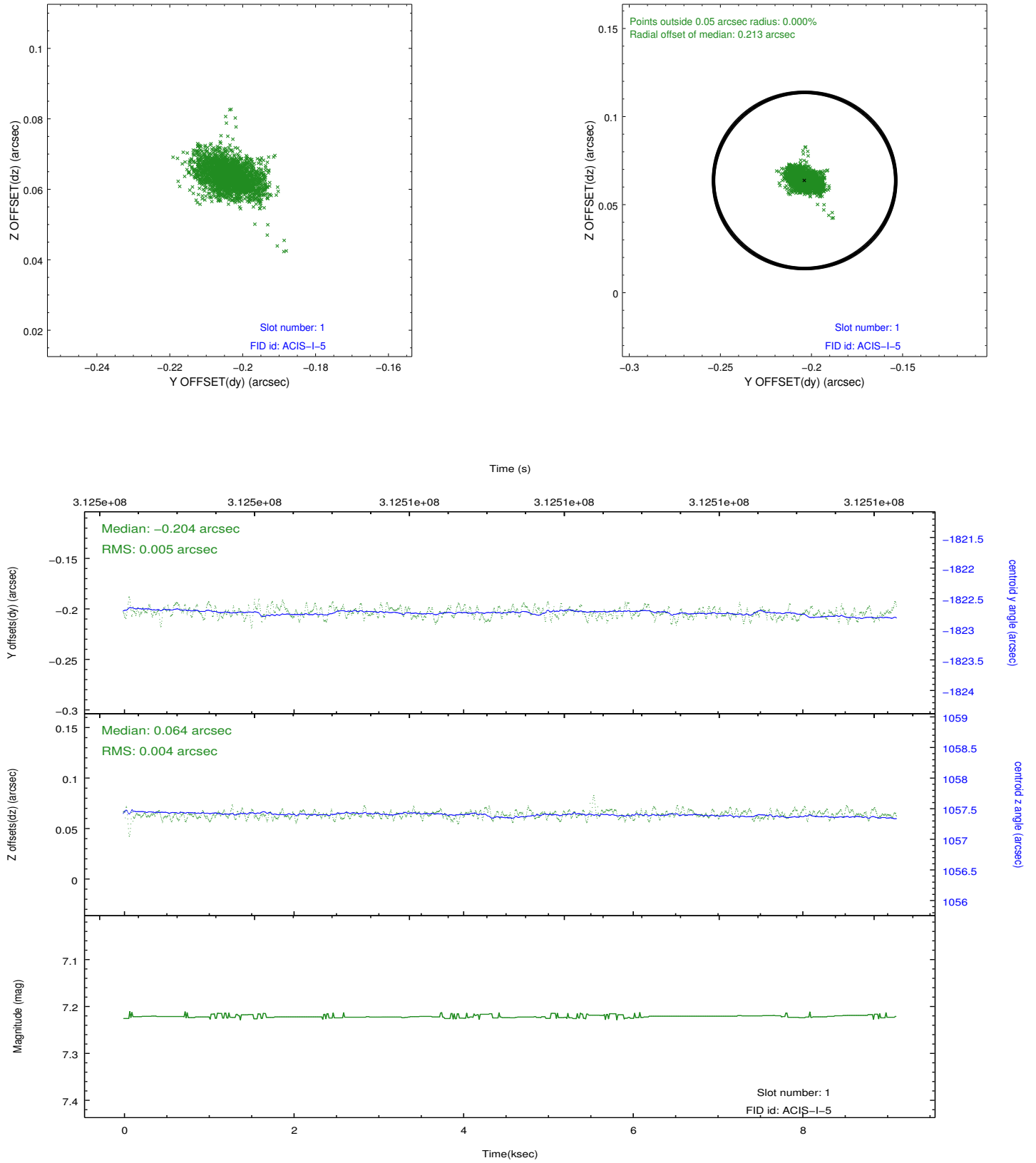


2.5 FID Slots

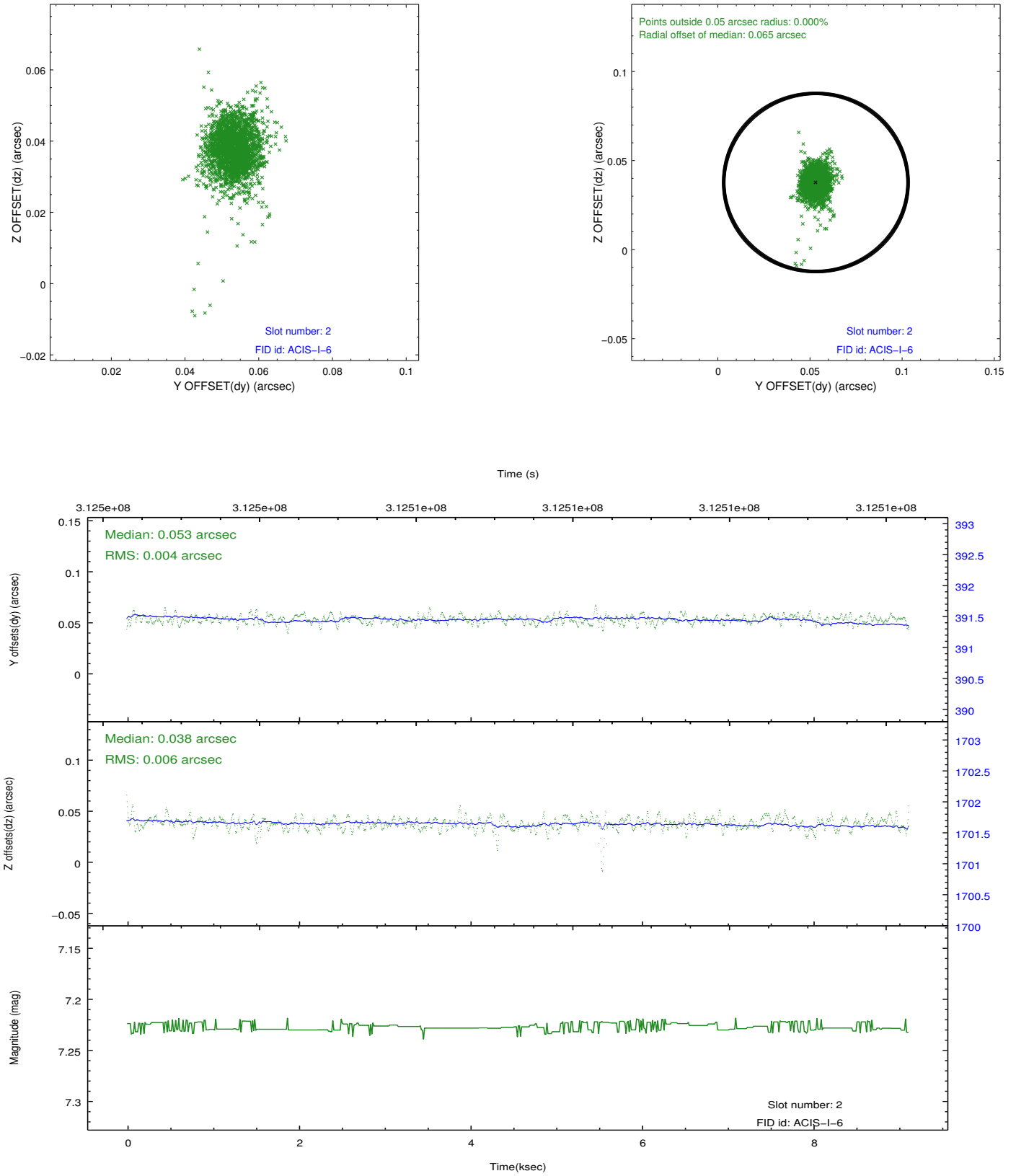
2.5.1 Slot 0



2.5.2 Slot 1



2.5.3 Slot 2



A Summary

A.1 Status

V&V Scientist	Jen Lauer
V&V Date (YYYY-MM-DD)	2012.05.07
V&V Edition	1
V&V Disposition and Status	OK
V&V Charge Time	8.71720006

A.2 Comments