

V&V Reference Report

L2 ASCDS Version : 8.4.4

Observation 7839 - L2 Version 2
Chandra X-Ray Center

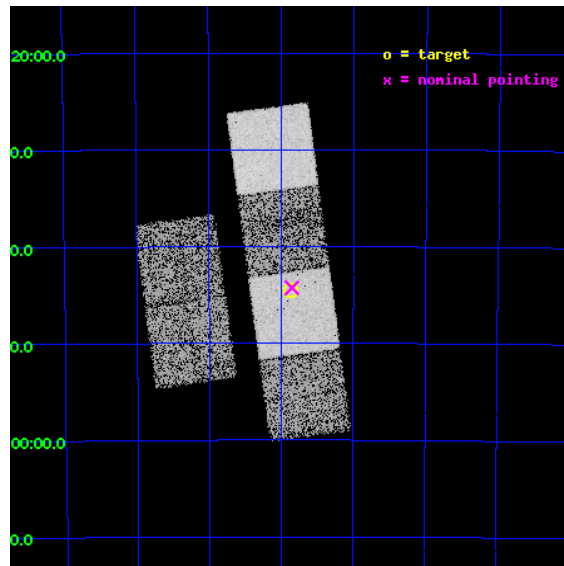
L2 Processing Date : May 1 2012

Contents

1	Front	2
2	OBI	3
2.1	OBI	3
2.1.1	Images	3
2.1.2	Bias	3
2.1.3	Parameters	4
2.1.4	Events	4
2.2	Compared Parameters	5
2.3	Aspect	6
2.4	Star Slots	9
2.4.1	Slot 3	9
2.4.2	Slot 4	10
2.4.3	Slot 5	11
2.4.4	Slot 6	12
2.4.5	Slot 7	13
2.5	FID Slots	14
2.5.1	Slot 0	14
2.5.2	Slot 1	15
2.5.3	Slot 2	16
A	Summary	17
A.1	Status	17
A.2	Comments	17

1 Front

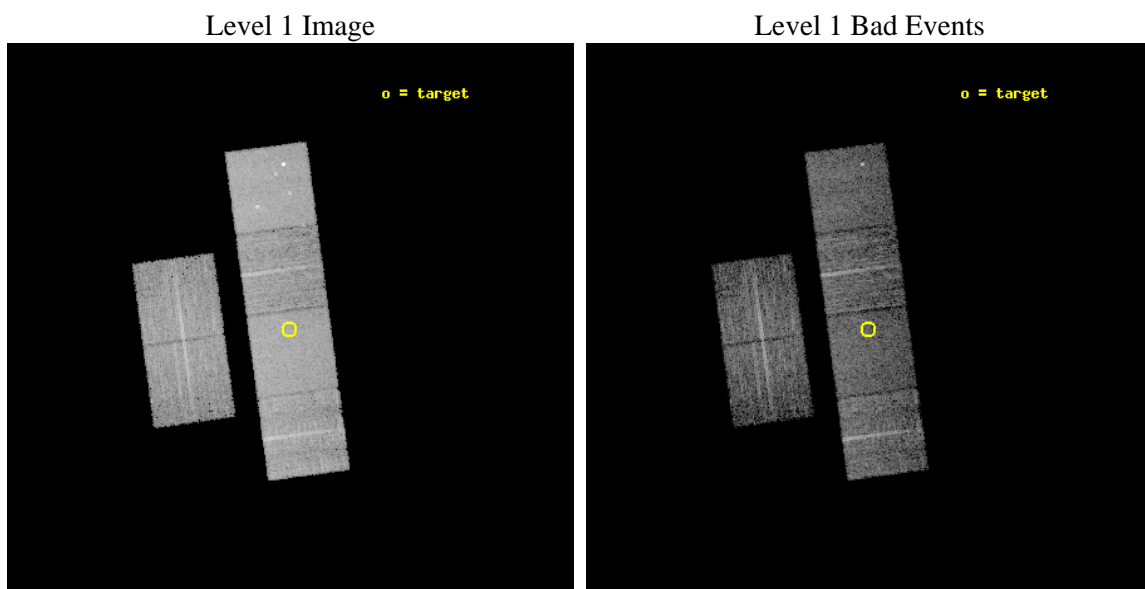
seq_num	701503	Sequence number
obs_id	7839	Observation id
title	Demographics of black holes in the local Universe.	Proposal title
observer	Prof. Smita Mathur	Principal investigator
object	NGC 1703	Source name
dtcycle	0	
cycle	P	events from which exps? Prim/Second/Both
ra_targ	73.217083	Observer's specified target RA [deg]
dec_targ	-59.74225	Observer's specified target Dec [deg]
ra_nom	73.213144673765	Nominal RA [deg]
dec_nom	-59.737757587401	Nominal Dec [deg]
roll_nom	82.348835361932	Nominal Roll [deg]
revision	2	Processing version of data
ontime	4950.3999816179	Sum of GTIs [s]
livetime	4887.7150362777	Livetime [s]
ontime2	4950.3999816179	Sum of GTIs [s]
ontime3	4950.3999816179	Sum of GTIs [s]
ontime5	4950.3999816179	Sum of GTIs [s]
ontime6	4950.3999816179	Sum of GTIs [s]
ontime7	4950.3999816179	Sum of GTIs [s]
ontime8	4950.3999816179	Sum of GTIs [s]
l2events	80442	Number of level 2 events



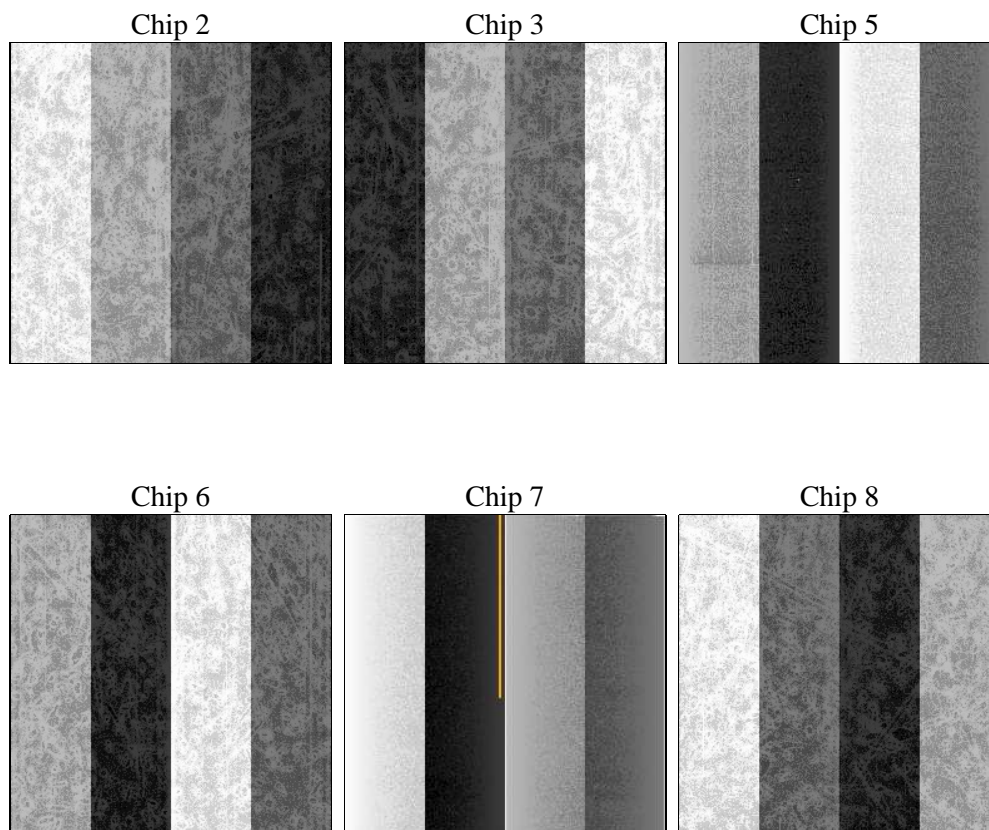
2 OBI

2.1 OBI

2.1.1 Images



2.1.2 Bias



2.1.3 Parameters

obi_num	0	Obi number	sched_exp_time	5000.000000	[s] Scheduled observation exposure time
ascdsver	8.4.4	Processing system revision	ontime	4950.3999816179	Sum of GTIs [s]
caldsver	4.4.9	 	ontime2	4950.3999816179	Sum of GTIs [s]
date	2012-05-01T04:38:40	Date and time of file creation	ontime3	4950.3999816179	Sum of GTIs [s]
revision	2	Processing version of data	ontime5	4950.3999816179	Sum of GTIs [s]
			ontime6	4950.3999816179	Sum of GTIs [s]
			ontime7	4950.3999816179	Sum of GTIs [s]
			ontime8	4950.3999816179	Sum of GTIs [s]
			l1events	345881	Number of level 1 events

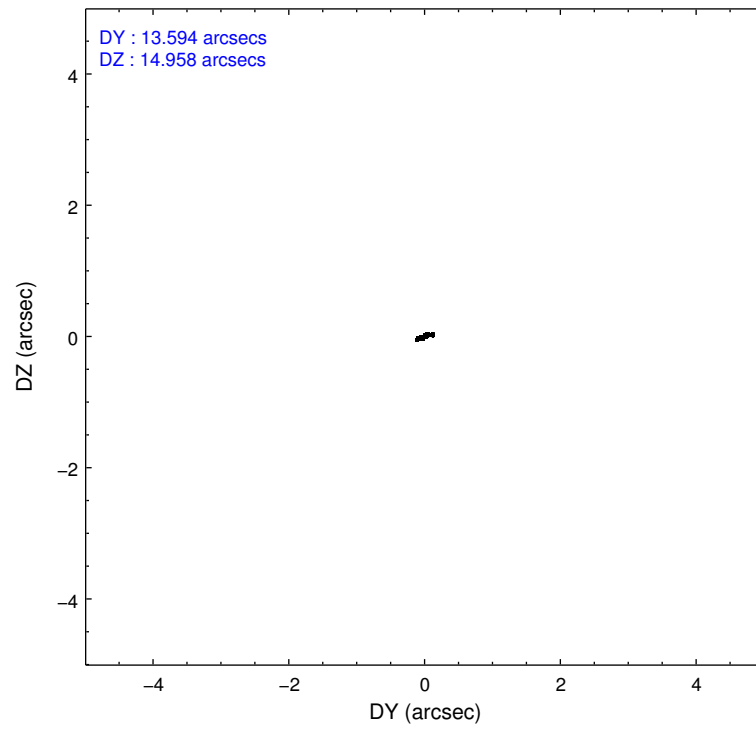
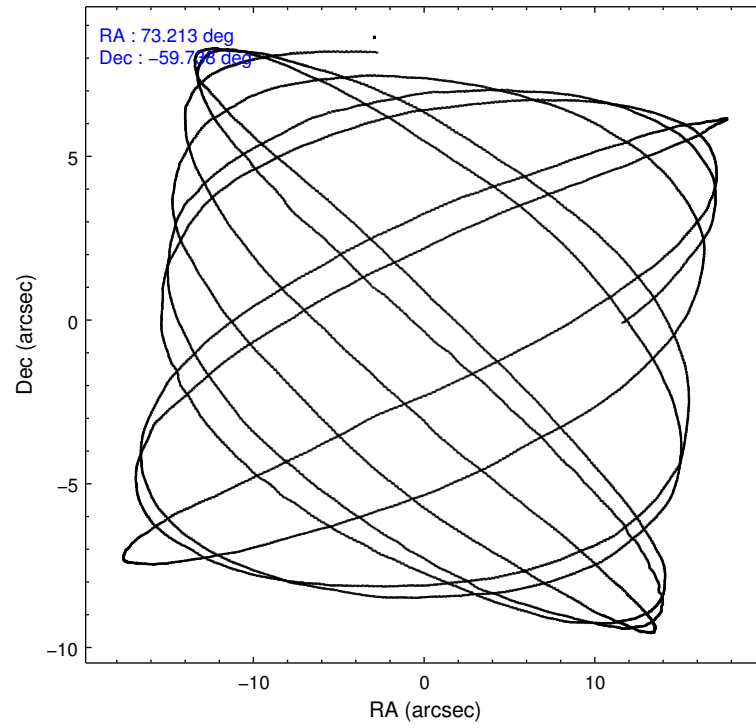
2.1.4 Events

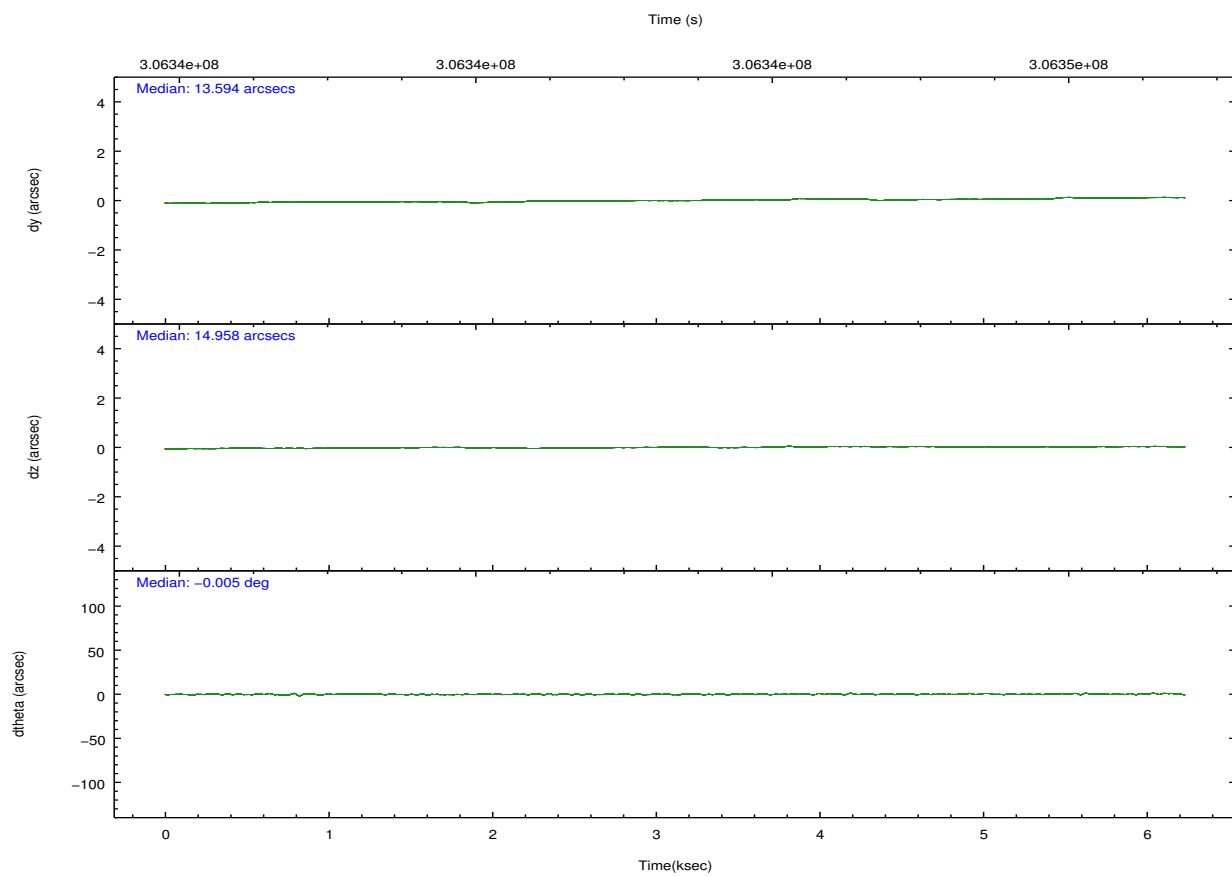
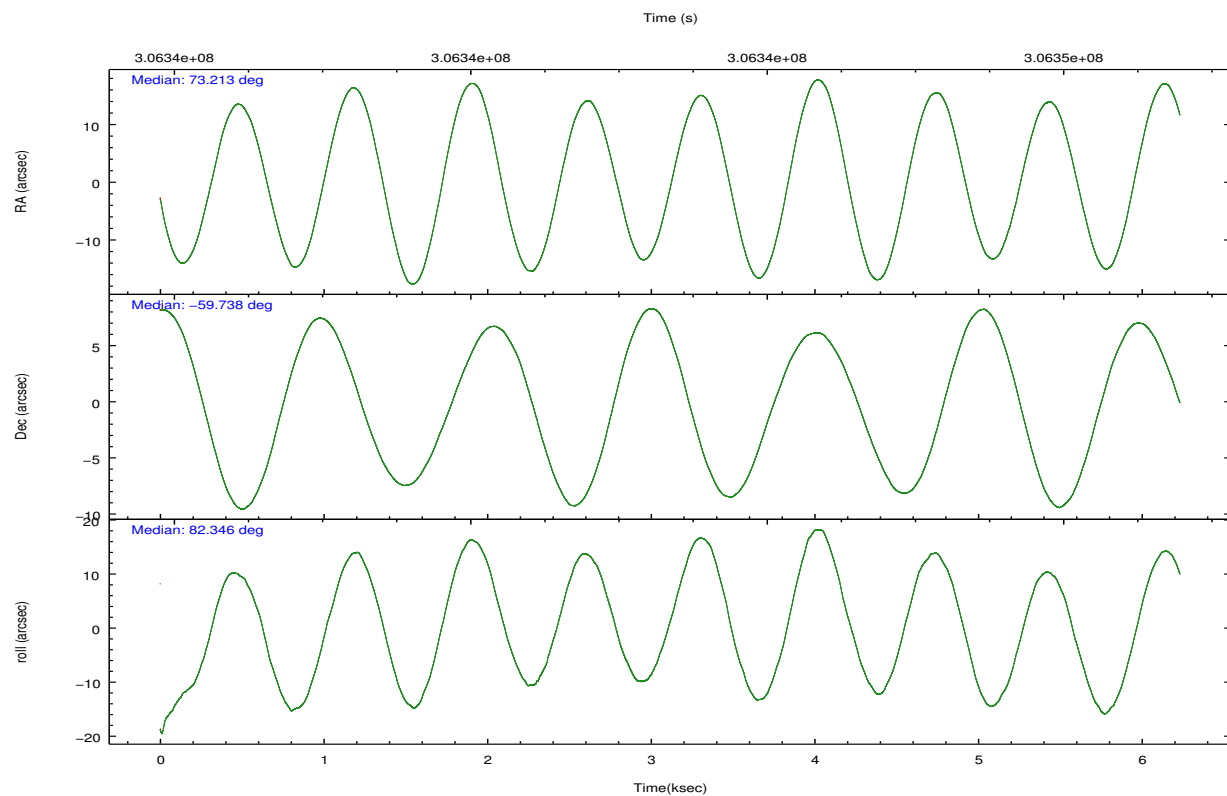
	ccd 2	ccd 3	ccd 5	ccd 6	ccd 7	ccd 8		ccd 2	ccd 3	ccd 5	ccd 6	ccd 7	ccd 8
level 1 events	48965	45766	75406	48564	66987	60193	grade 0 events	2556	2662	3463	2268	2561	4333
rejected events	43191	39854	40084	42701	38816	46851		5%	5%	4%	4%	3%	7%
rejected %	88%	87%	53%	87%	57%	77%	grade 1 events	31	30	511	28	72	46
								0%	0%	0%	0%	0%	0%
							grade 2 events	1276	1118	11389	1272	5657	2927
								2%	2%	15%	2%	8%	4%
							grade 3 events	518	556	1315	580	2488	1418
								1%	1%	1%	1%	3%	2%
							grade 4 events	519	584	1227	557	2397	1322
								1%	1%	1%	1%	3%	2%
							grade 5 events	1874	2200	5276	2371	6434	2978
								3%	4%	6%	4%	9%	4%
							grade 6 events	913	995	17956	1194	15088	3344
								1%	2%	23%	2%	22%	5%
							grade 7 events	41278	37621	34269	40294	32290	43825
								84%	82%	45%	82%	48%	72%

2.2 Compared Parameters

Parameter	Planned	Actual	Parameter	Planned	Actual
Instrument	ACIS	ACIS	Obspar format version number	7	7
Detector	ACIS-235678	ACIS-235678	Obspar file type	PREDICTED	ACTUAL
Grating	NONE	NONE	Obspar update status	NONE	UPDATED
Data mode	FAINT	FAINT	Number of optional ACIS chips dropped	0	0
Observation mode	POINTING	POINTING	On-chip summing requested	N	N
[deg] Pointing RA	73.234491	73.21314467376492	Subarray requested	NONE	NONE
[deg] Pointing Dec	-59.762958	-59.7377575874008	Alternating exposures requested	N	N
[deg] Pointing Roll	82.210666	82.34883536193193	[s] Primary exposure time	0.000000	3.2
[mm] SIM focus pos	-0.684267	-0.6828225247311905			
[mm] SIM defocus	0	0.001444936568705701			
[mm] SIM translation stage pos	-190.132523	-190.1400660498719			
[mm] SIM translation stage offset	0	0.00754346686406393			
[s] Observation start time (MET)	306341455.184000	306339826.82163			
Observation start date	2007-09-16T14:49:50	2007-09-16T14:23:46			
[s] Observation end time (MET)	306346455.184000	306346801.43446			
Observation end date	2007-09-16T16:13:10	2007-09-16T16:20:01			
Read mode	TIMED	TIMED			

2.3 Aspect



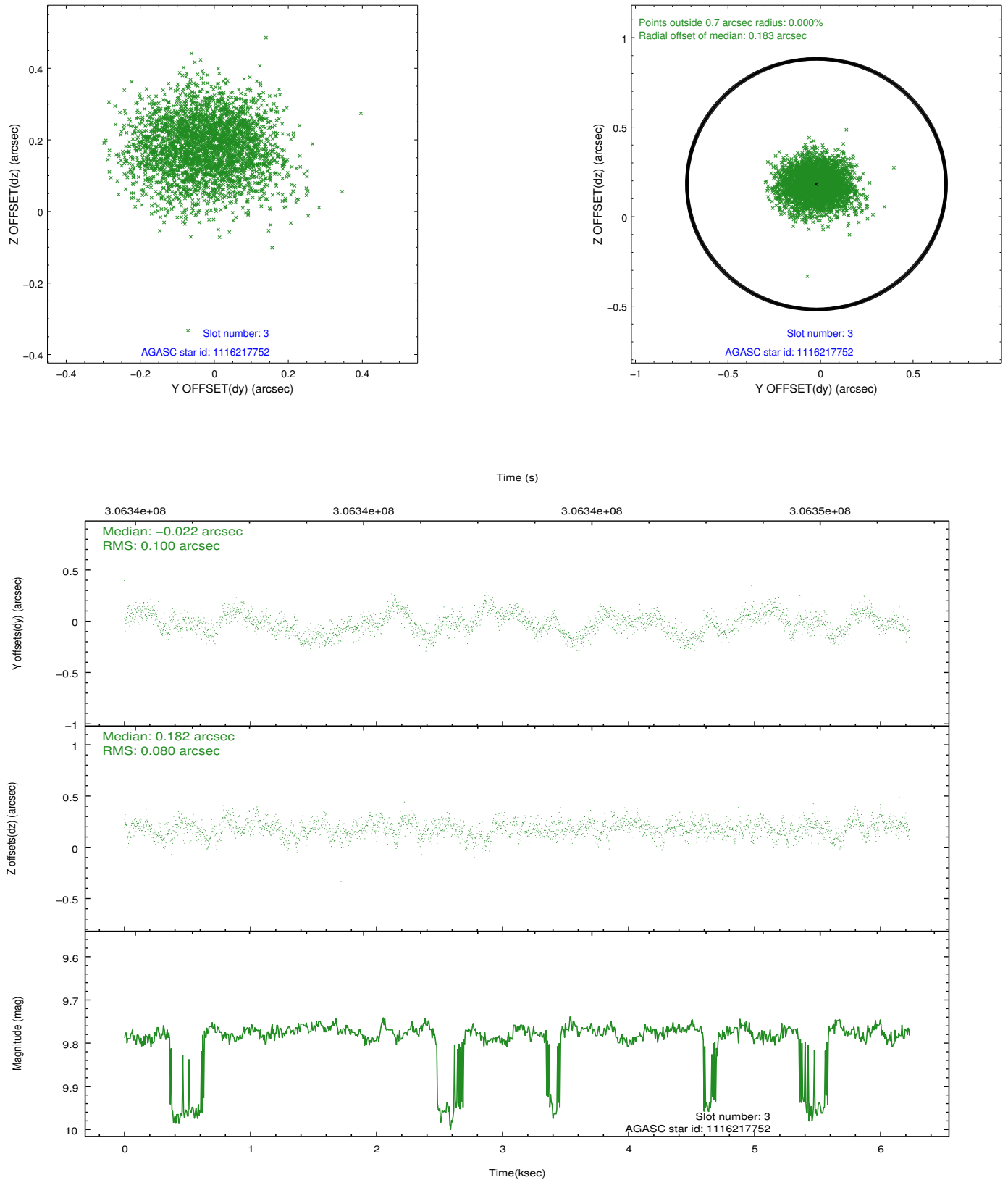


Slot Statistics

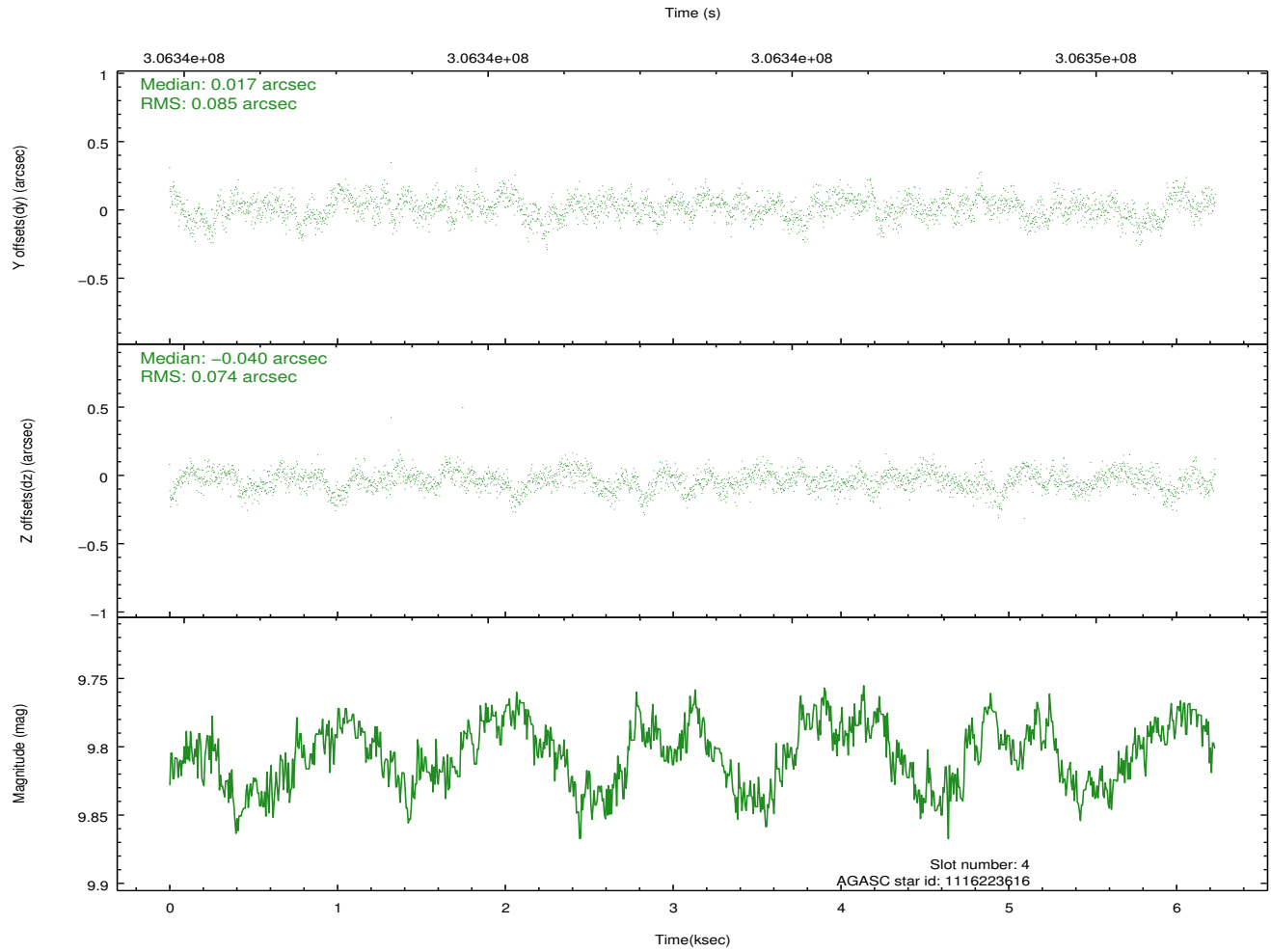
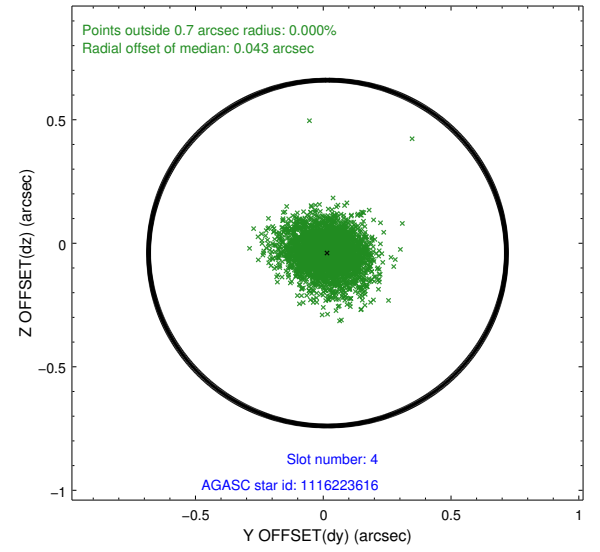
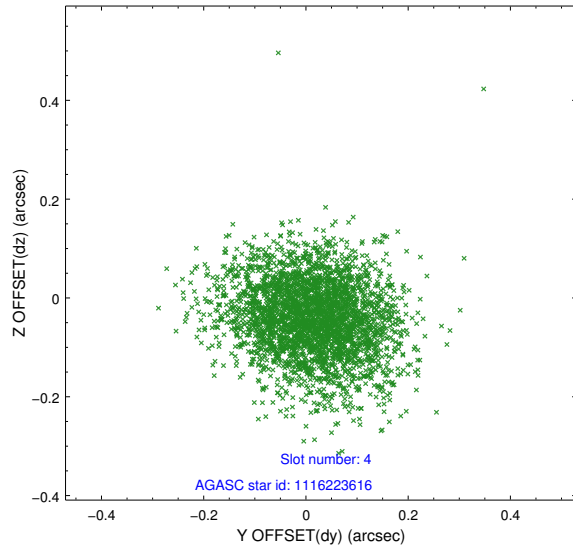
slot	status	id	mag	n_pts	med_dy	med_dz	dr1	dr2	ra	dec	mean_y	mean_z
0	FID	ACIS-S-2	7.09	1521	-0.067	-0.041	0.007	0.011	0.000000	0.000000	-766.57	-1736.39
1	FID	ACIS-S-4	7.19	1520	0.209	0.044	0.007	0.013	0.000000	0.000000	2146.52	171.24
2	FID	ACIS-S-5	7.22	1519	-0.173	0.006	0.007	0.011	0.000000	0.000000	-1818.33	165.90
3	GUIDE	1116217752	9.78	3020	-0.022	0.182	0.137	0.217	73.572485	-59.861926	-271.84	-653.38
4	GUIDE	1116223616	9.81	3037	0.017	-0.040	0.118	0.196	73.104252	-59.140318	2187.78	542.16
5	GUIDE	1163396000	6.63	3041	-0.188	-0.035	0.069	0.106	72.195946	-60.258939	-2034.56	1593.90
6	GUIDE	1163398872	10.45	2972	0.156	-0.258	0.156	0.254	71.912810	-60.085267	-1495.37	2190.93
7	GUIDE	1163529488	9.68	3036	0.047	0.145	0.130	0.210	73.989407	-60.418833	-2165.65	-1649.65

2.4 Star Slots

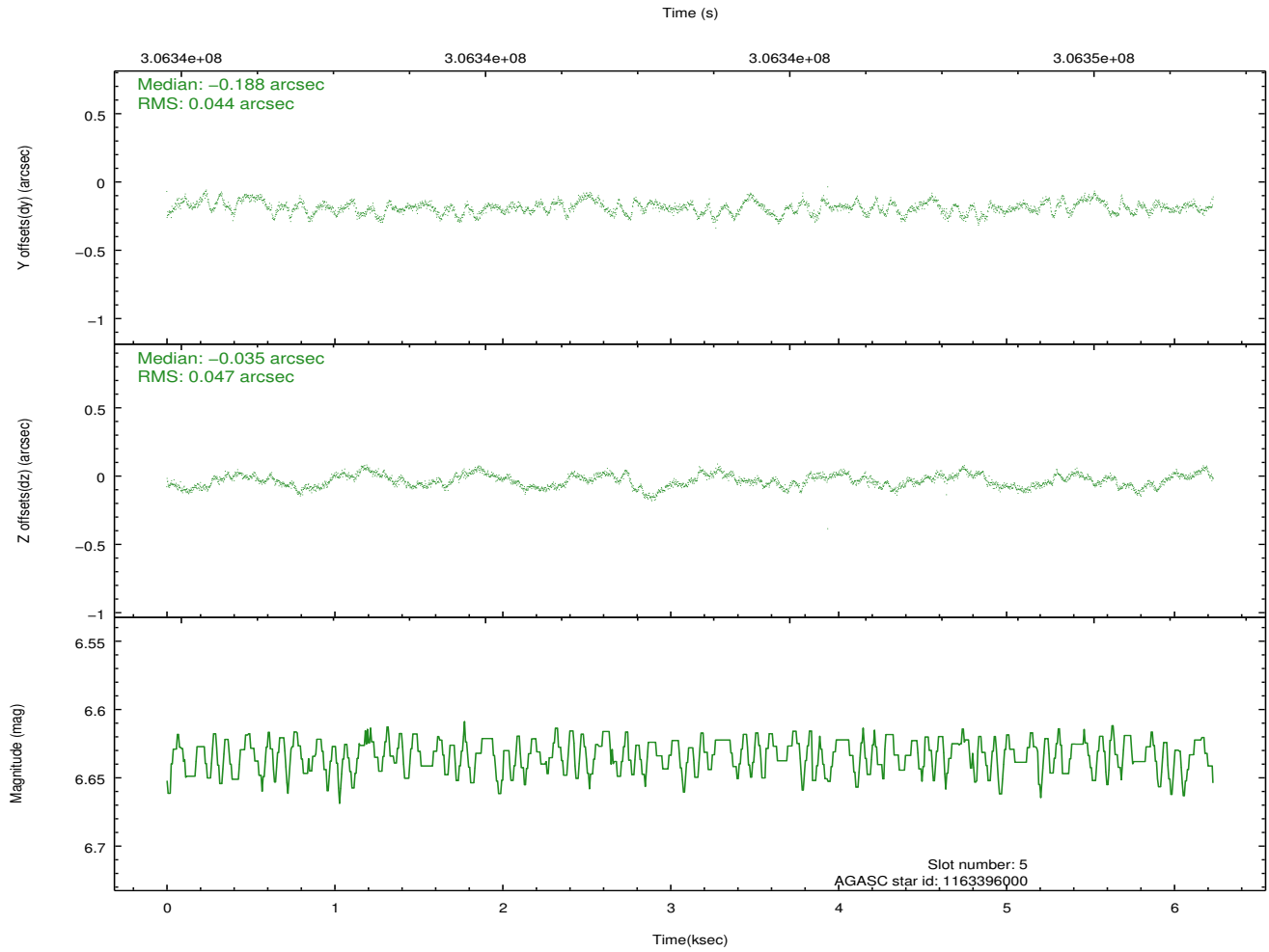
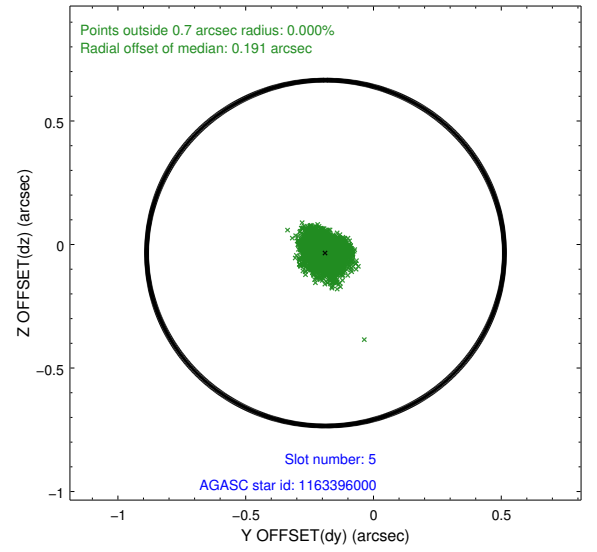
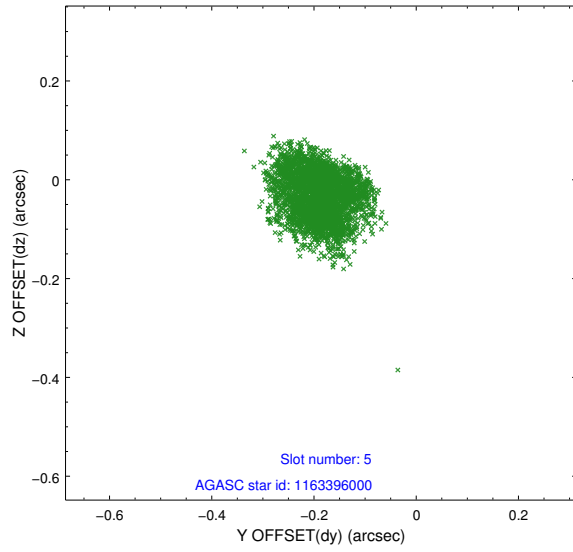
2.4.1 Slot 3



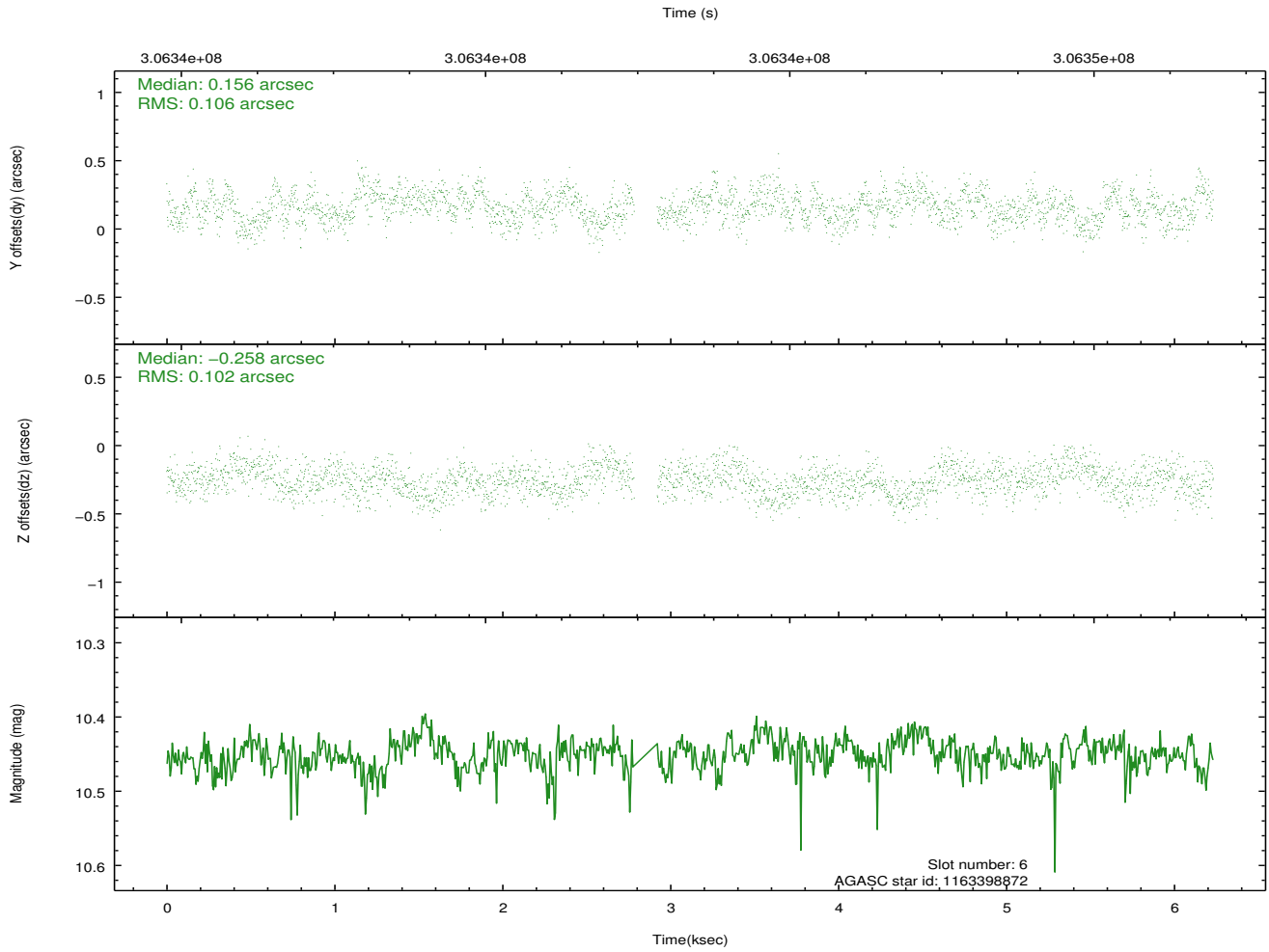
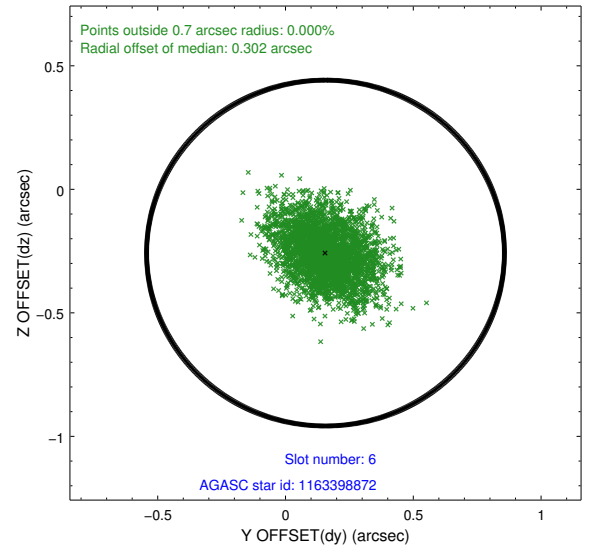
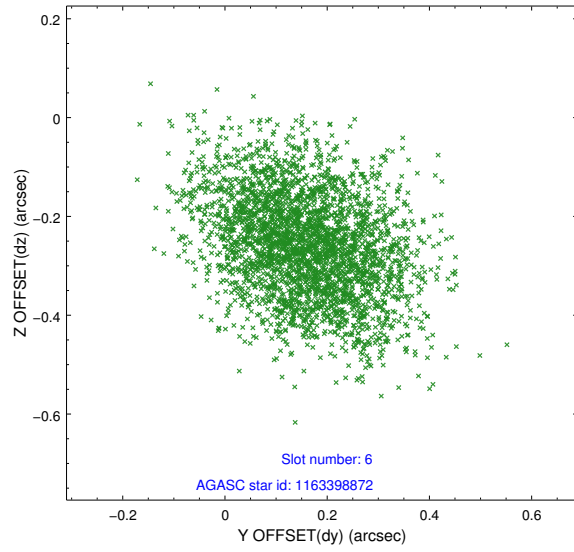
2.4.2 Slot 4



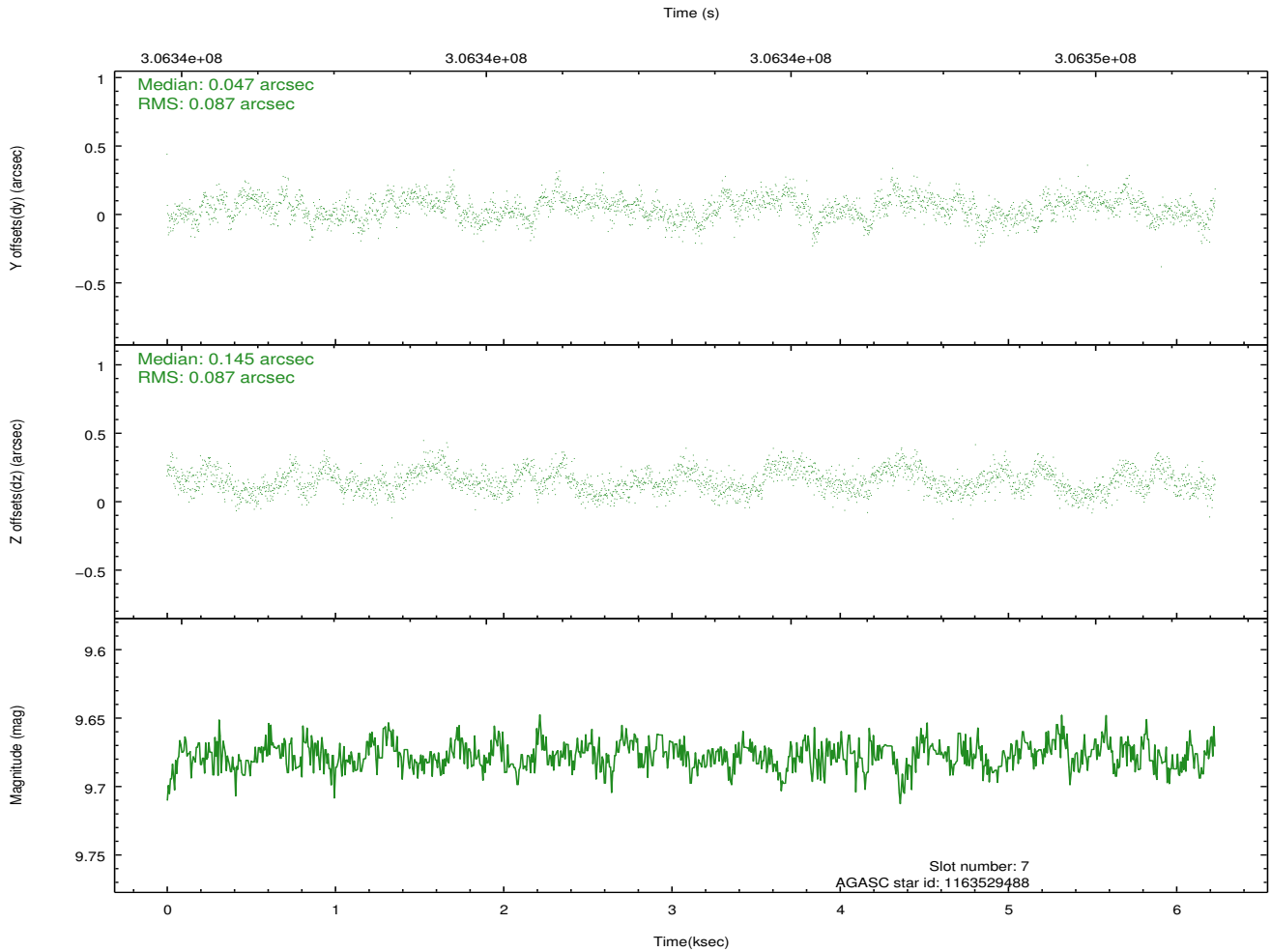
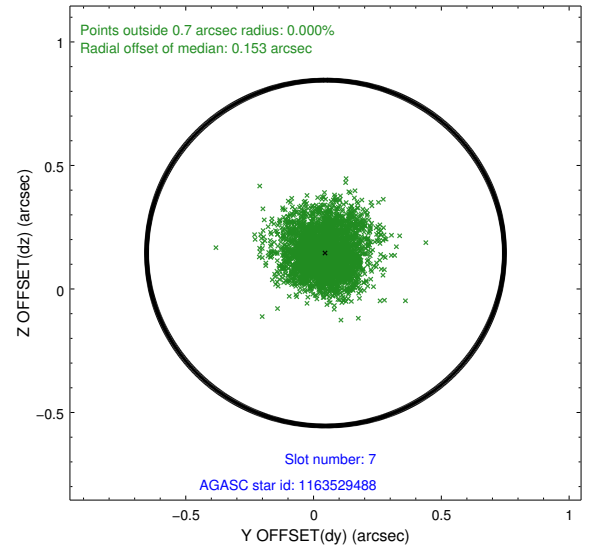
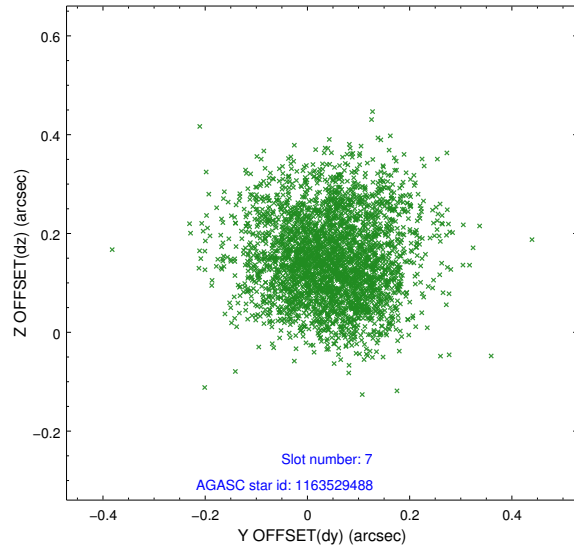
2.4.3 Slot 5



2.4.4 Slot 6

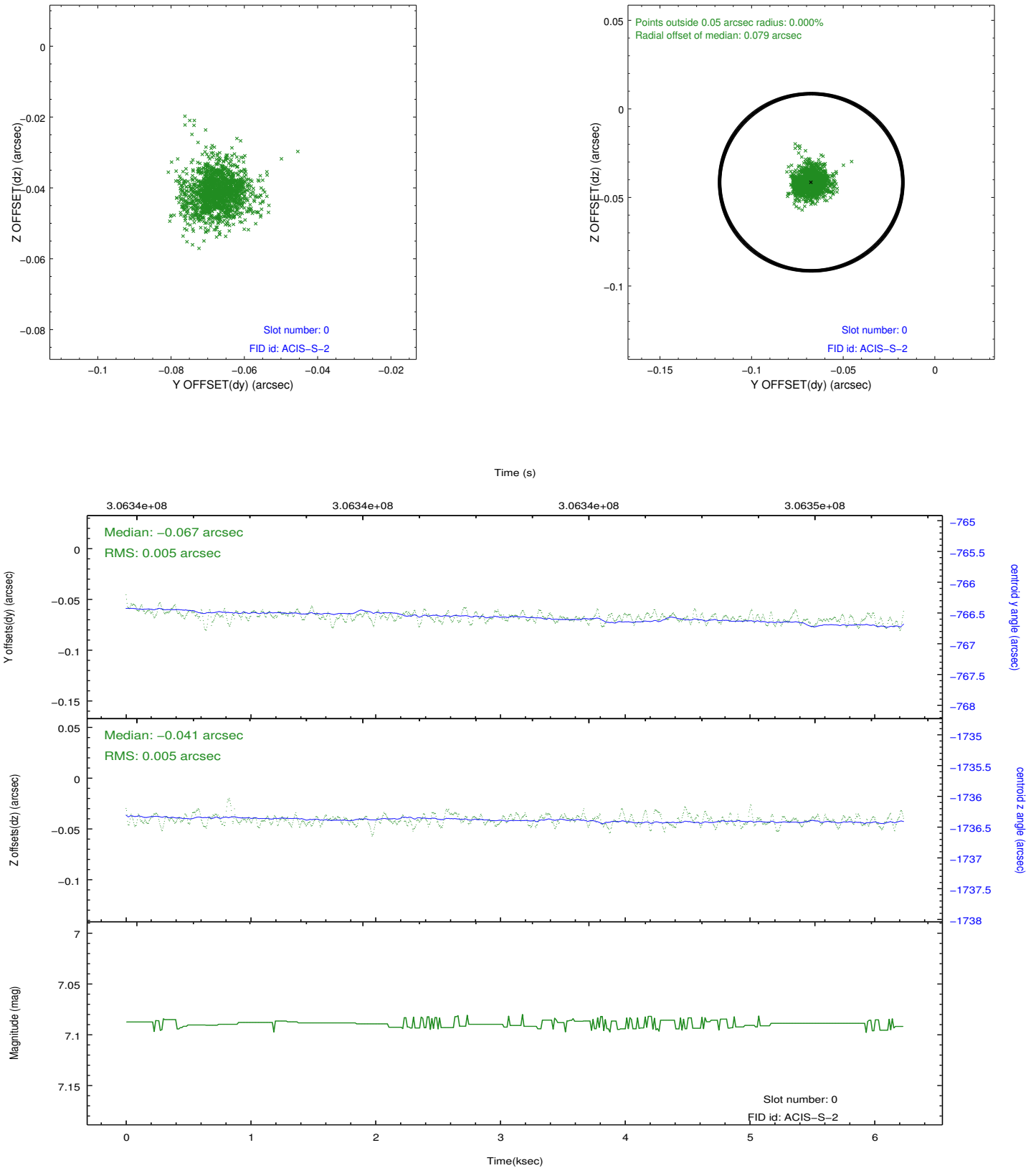


2.4.5 Slot 7

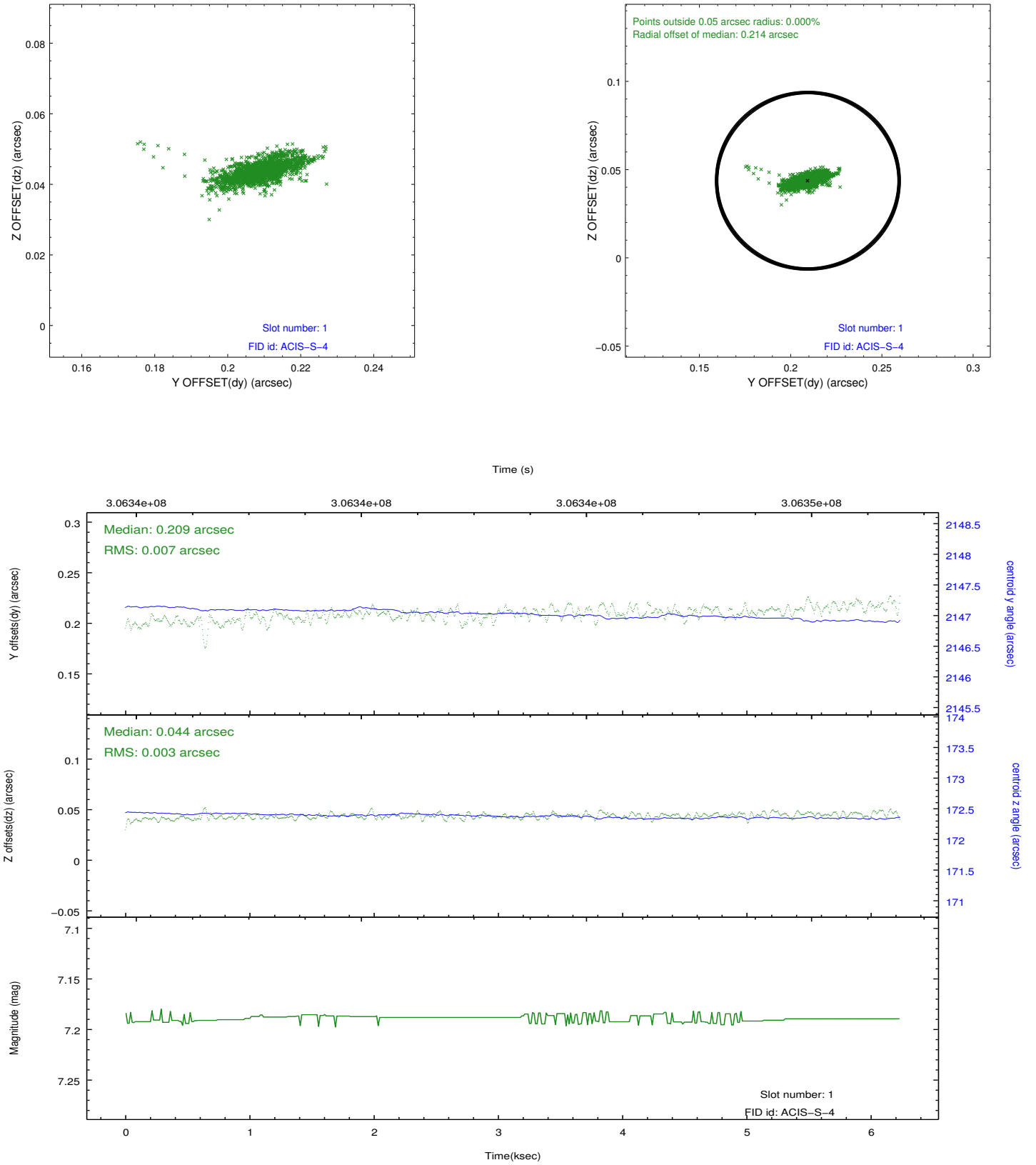


2.5 FID Slots

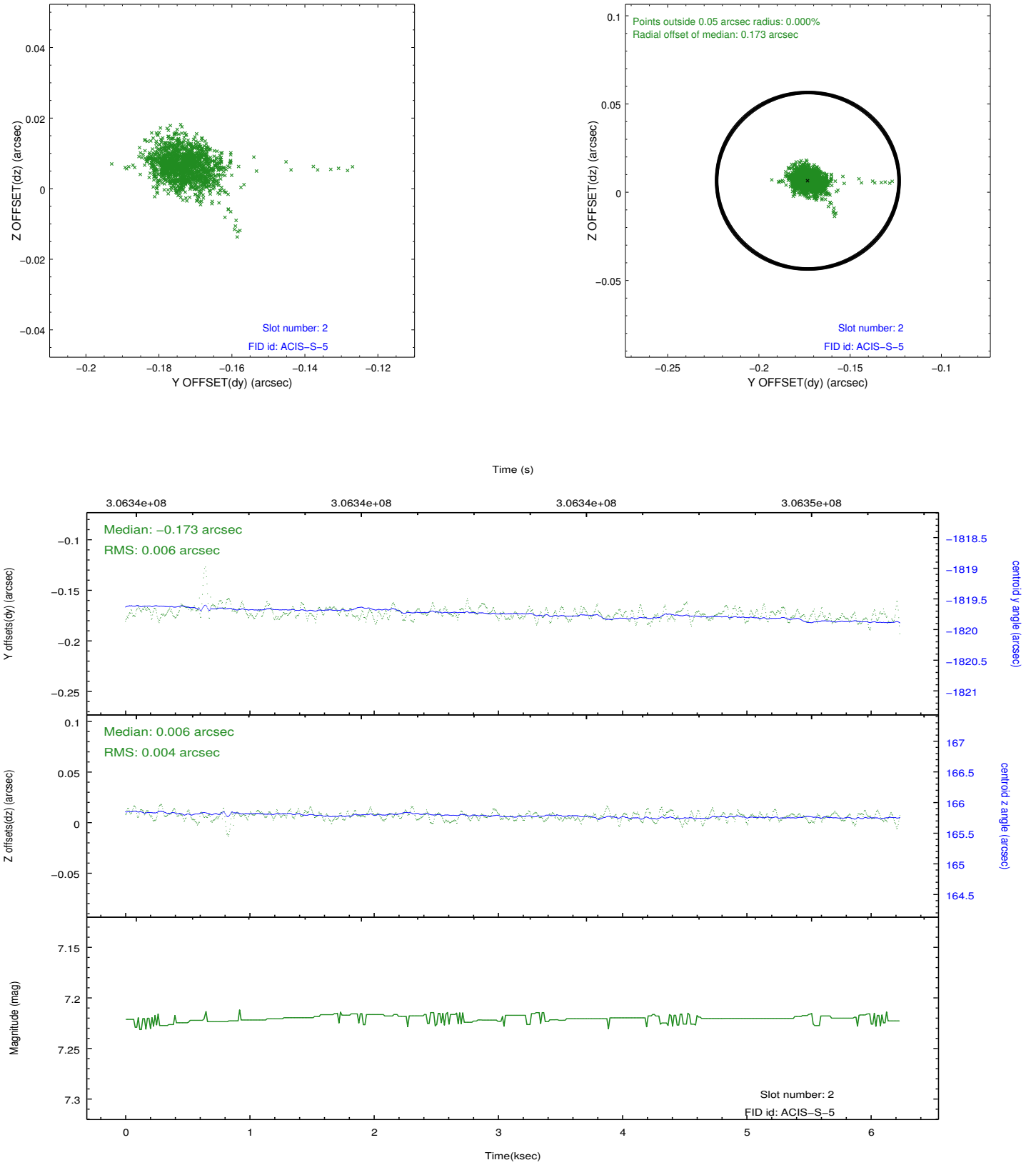
2.5.1 Slot 0



2.5.2 Slot 1



2.5.3 Slot 2



A Summary

A.1 Status

V&V Scientist	Jen Lauer
V&V Date (YYYY-MM-DD)	2012.05.03
V&V Edition	1
V&V Disposition and Status	OK
V&V Charge Time	4.95039998

A.2 Comments