

V&V Reference Report

L2 ASCDS Version : 8.4.4

Observation 7649 - L2 Version 3
Chandra X-Ray Center

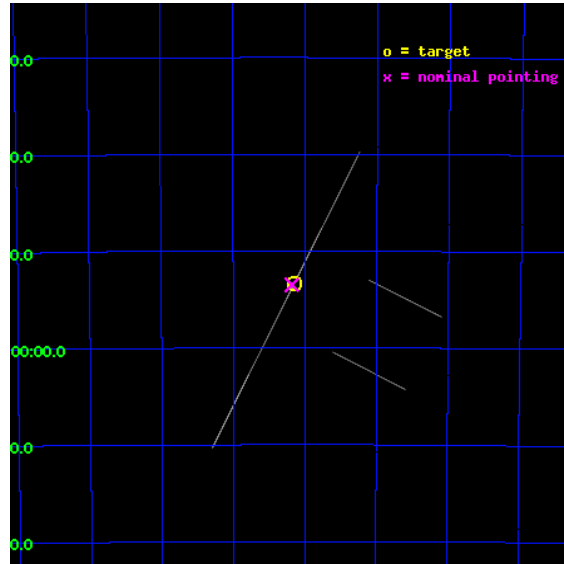
L2 Processing Date : Apr 23 2012

Contents

1	Front	2
2	OBI	3
2.1	OBI	3
2.1.1	Images	3
2.1.2	Bias	3
2.1.3	Parameters	4
2.1.4	Events	4
2.2	Compared Parameters	5
2.3	Aspect	6
2.4	Star Slots	9
2.4.1	Slot 3	9
2.4.2	Slot 4	10
2.4.3	Slot 5	11
2.4.4	Slot 6	12
2.4.5	Slot 7	13
2.5	FID Slots	14
2.5.1	Slot 0	14
2.5.2	Slot 1	15
2.5.3	Slot 2	16
A	Summary	17
A.1	Status	17
A.2	Comments	17

1 Front

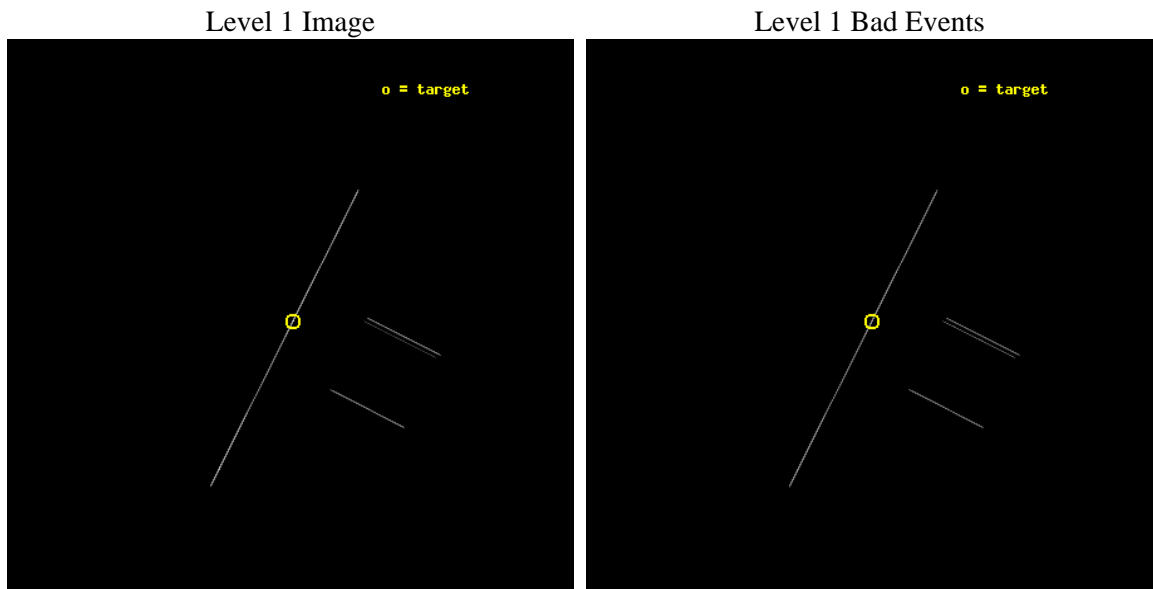
seq_num	500778	Sequence number
obs_id	7649	Observation id
title	Tiny Hiccups To Titanic Explosions: Tackling Transients in Anomalous X-ray Pulsars	Proposal title
observer	Professor Victoria Kaspi	Principal investigator
object	1E 1048.1-5937	Source name
ra_targ	162.537083	Observer's specified target RA [deg]
dec_targ	-59.889	Observer's specified target Dec [deg]
ra_nom	162.54532241105	Nominal RA [deg]
dec_nom	-59.891538555556	Nominal Dec [deg]
roll_nom	296.74959308955	Nominal Roll [deg]
revision	3	Processing version of data
ontime	19157.0	Sum of GTIs [s]
livetime	19082.16796875	Livetime [s]
ontime2	19157.0	Sum of GTIs [s]
ontime3	19157.0	Sum of GTIs [s]
ontime5	19157.0	Sum of GTIs [s]
ontime6	19157.0	Sum of GTIs [s]
ontime7	19157.0	Sum of GTIs [s]
ontime8	19157.0	Sum of GTIs [s]
l2events	413277	Number of level 2 events



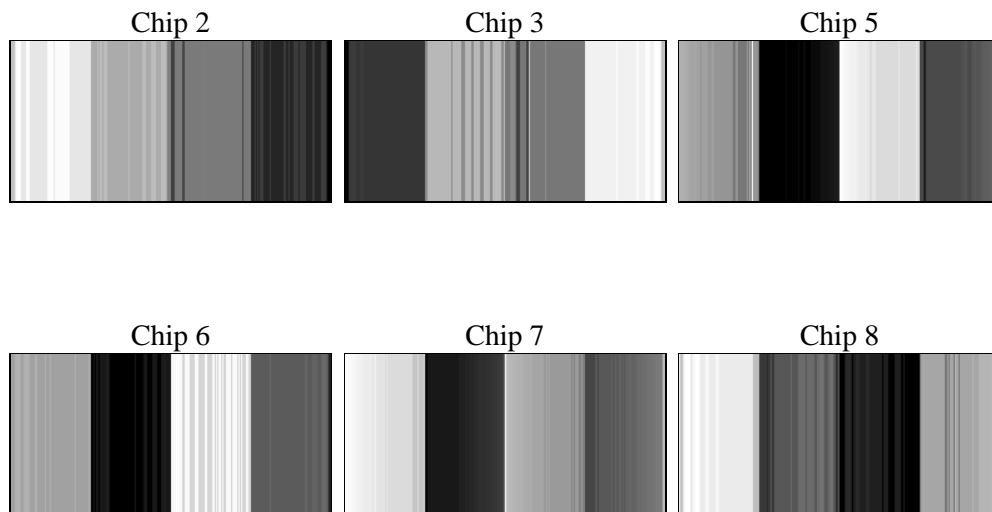
2 OBI

2.1 OBI

2.1.1 Images



2.1.2 Bias



2.1.3 Parameters

obi_num	0	Obi number	sched_exp_time	19000.000000	[s] Scheduled observation exposure time
ascdsver	8.4.4	Processing system revision	ontime	19157.0	Sum of GTIs [s]
caldsver	4.4.9	 	ontime2	19157.0	Sum of GTIs [s]
date	2012-04-23T22:04:42	Date and time of file creation	ontime3	19157.0	Sum of GTIs [s]
revision	3	Processing version of data	ontime5	19157.0	Sum of GTIs [s]
			ontime6	19157.0	Sum of GTIs [s]
			ontime7	19157.0	Sum of GTIs [s]
			ontime8	19157.0	Sum of GTIs [s]
			l1events	601639	Number of level 1 events

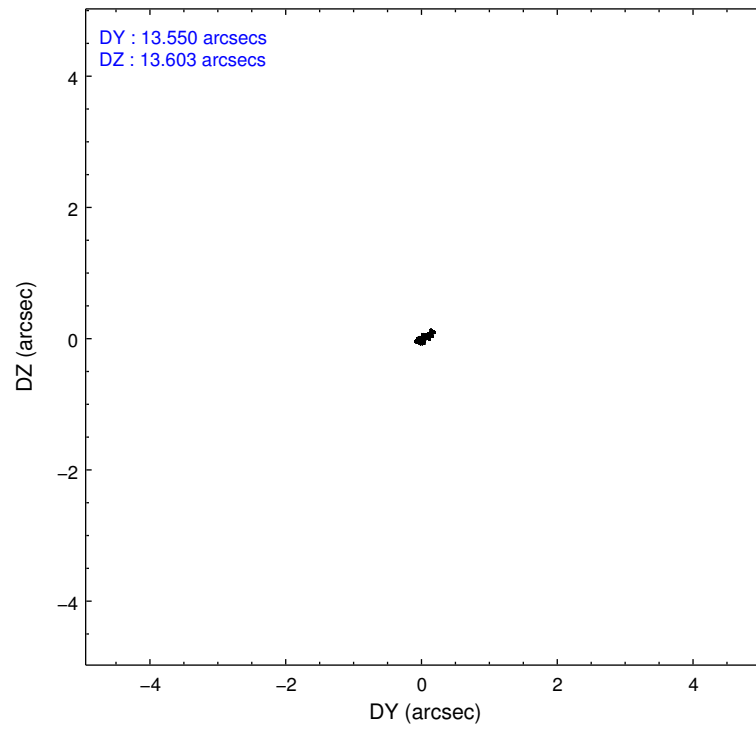
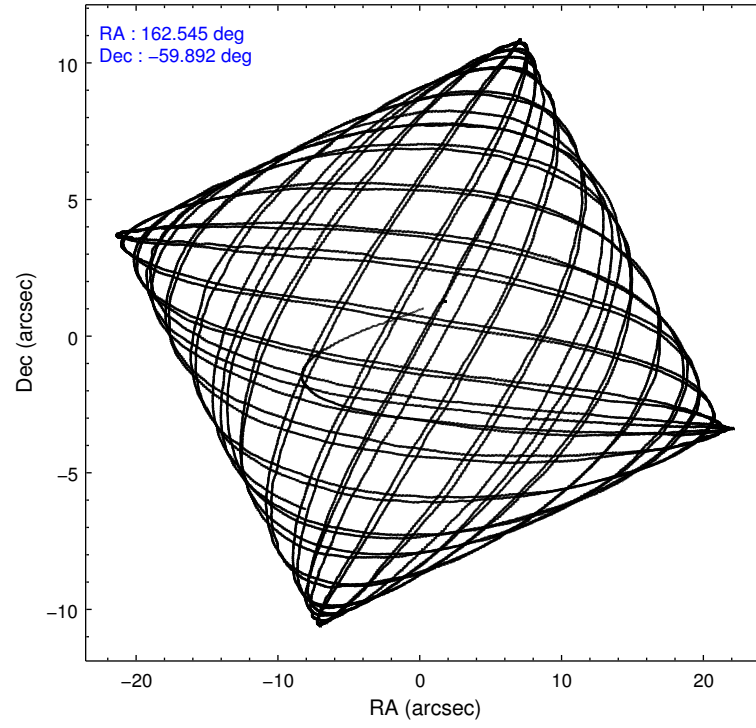
2.1.4 Events

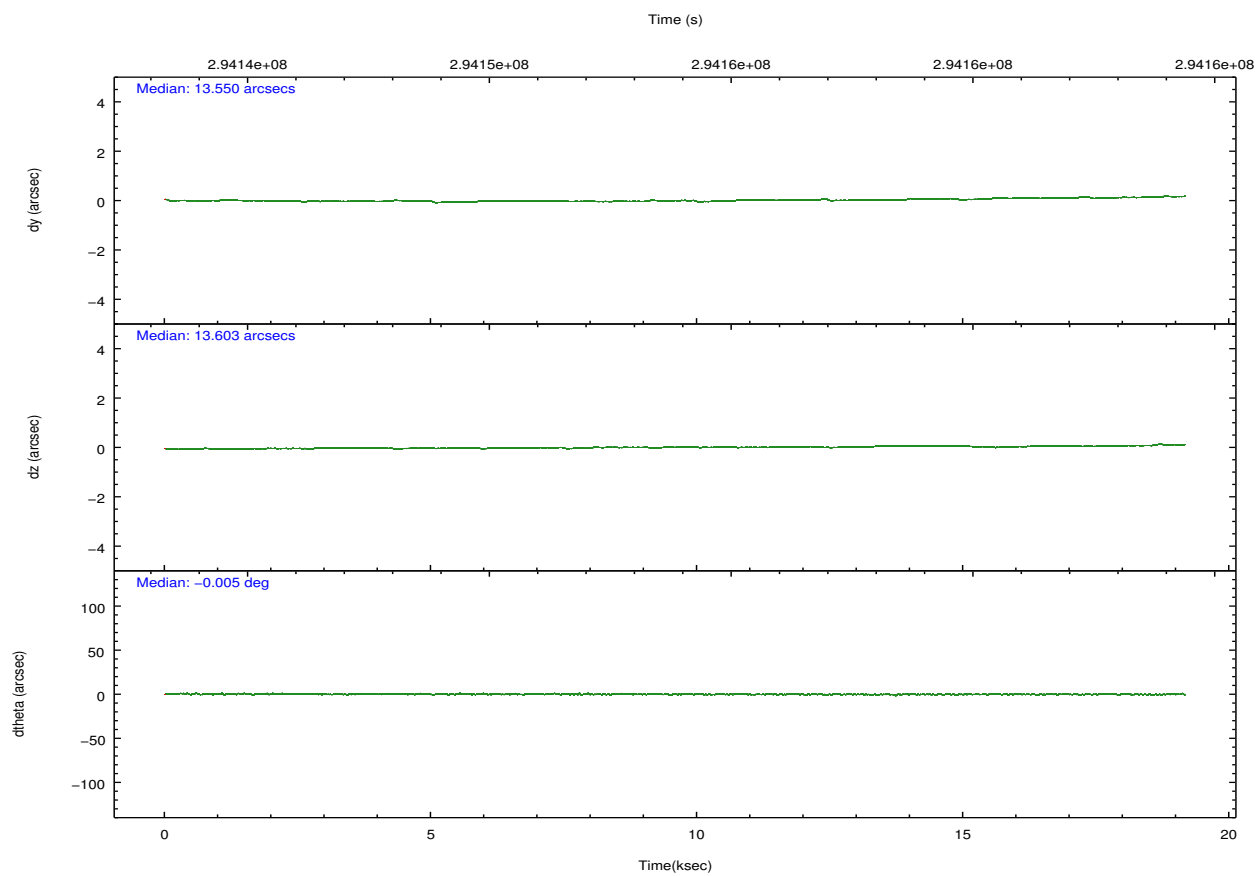
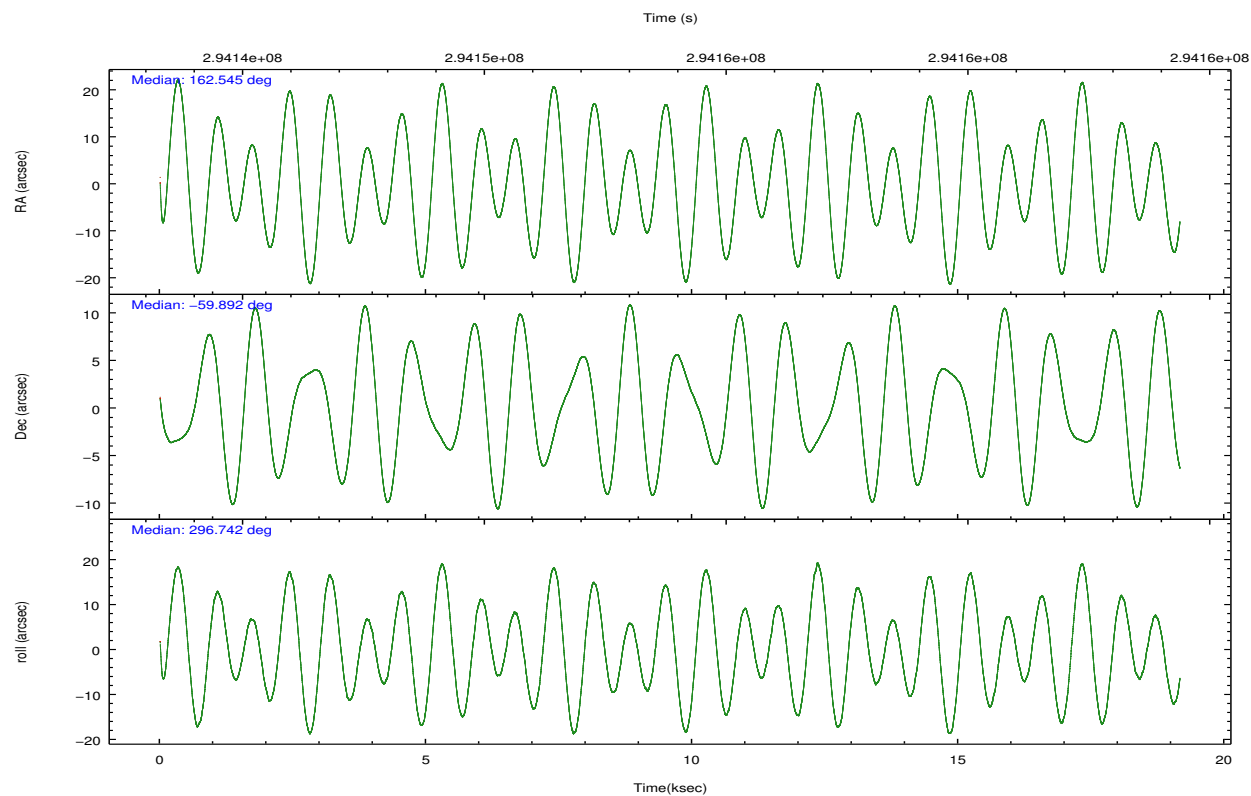
	ccd 2	ccd 3	ccd 5	ccd 6	ccd 7	ccd 8		ccd 2	ccd 3	ccd 5	ccd 6	ccd 7	ccd 8
level 1 events	39582	44705	171287	44260	213108	88697	grade 0 events	4833	5396	20064	4436	27988	15836
rejected events	9804	11023	31297	11286	31276	18416		12%	12%	11%	10%	13%	17%
rejected %	24%	24%	18%	25%	14%	20%	grade 1 events	163	176	296	159	446	342
								0%	0%	0%	0%	0%	0%
							grade 2 events	12202	14319	46163	13988	50556	23678
								30%	32%	26%	31%	23%	26%
							grade 3 events	4129	4844	3755	4428	16460	8526
								10%	10%	2%	10%	7%	9%
							grade 4 events	4192	4077	3609	4329	16056	8249
								10%	9%	2%	9%	7%	9%
							grade 5 events	7310	8282	17800	8419	22267	12156
								18%	18%	10%	19%	10%	13%
							grade 6 events	6753	7611	79600	8501	79335	19910
								17%	17%	46%	19%	37%	22%
							grade 7 events	0	0	0	0	0	0
								0%	0%	0%	0%	0%	0%

2.2 Compared Parameters

Parameter	Planned	Actual	Parameter	Planned	Actual
Instrument	ACIS	ACIS	Obspar format version number	7	7
Detector	ACIS-235678	ACIS-235678	Obspar file type	PREDICTED	ACTUAL
Grating	NONE	NONE	Obspar update status	NONE	UPDATED
Data mode	CC33_FAINT	CC33_FAINT	Number of optional ACIS chips dropped	0	0
Observation mode	POINTING	POINTING	On-chip summing requested	N	N
[deg] Pointing RA	162.499356	162.5453224110506	Subarray requested	NONE	NONE
[deg] Pointing Dec	-59.876857	-59.89153855555644	Alternating exposures requested	N	N
[deg] Pointing Roll	296.553202	296.7495930895541	[s] Primary exposure time	0.000000	0
[mm] SIM focus pos	-0.684267	-0.6828225247311905			
[mm] SIM defocus	0	0.001444936568705701			
[mm] SIM translation stage pos	-190.132523	-190.1425803651734			
[mm] SIM translation stage offset	0	0.01005778216563158			
[s] Observation start time (MET)	294144434.184000	294142703.43735			
Observation start date	2007-04-28T10:46:09	2007-04-28T10:18:23			
[s] Observation end time (MET)	294163434.184000	294164451.88839			
Observation end date	2007-04-28T16:02:49	2007-04-28T16:20:51			
Read mode	CONTINUOUS	CONTINUOUS			

2.3 Aspect



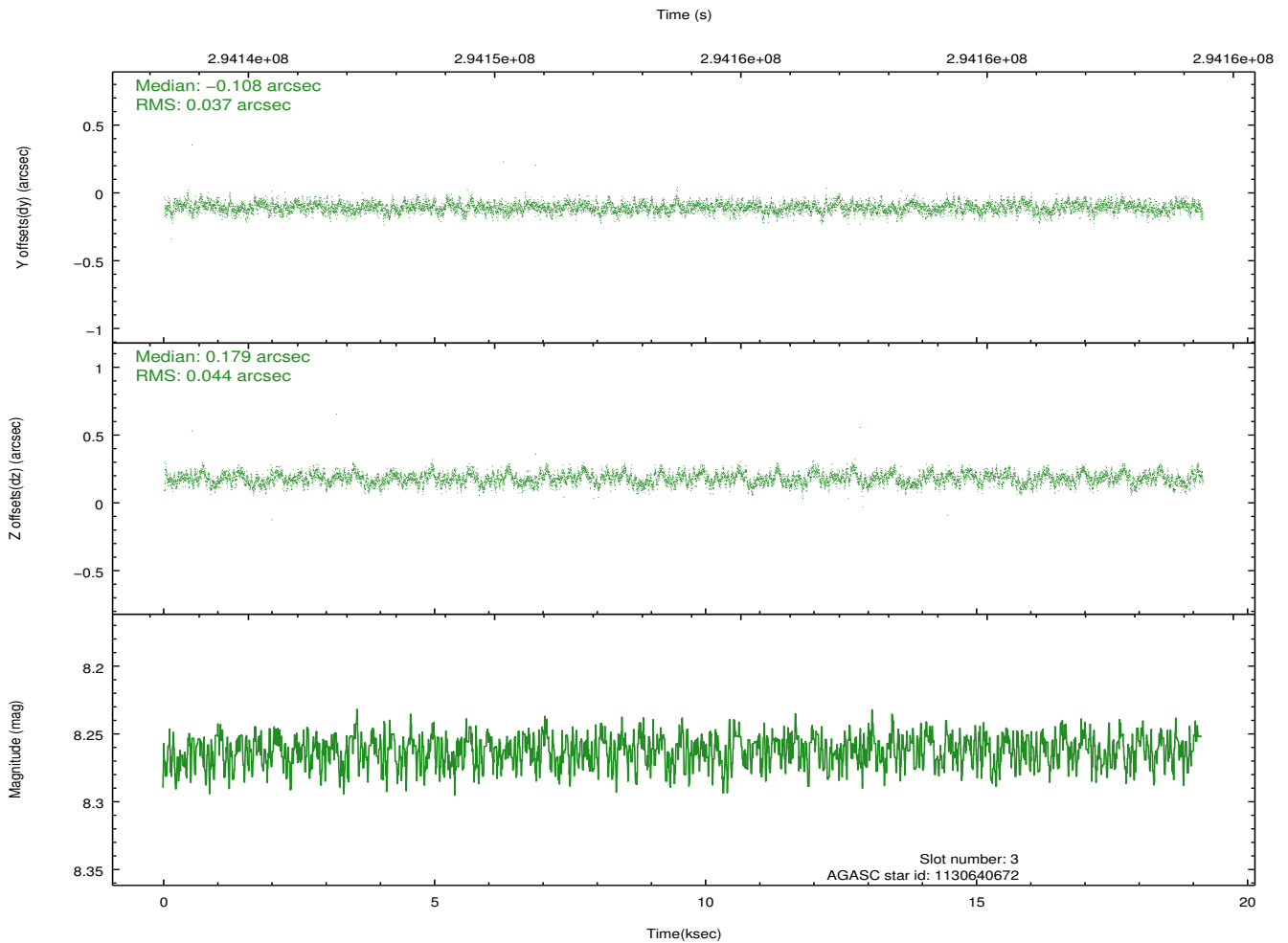
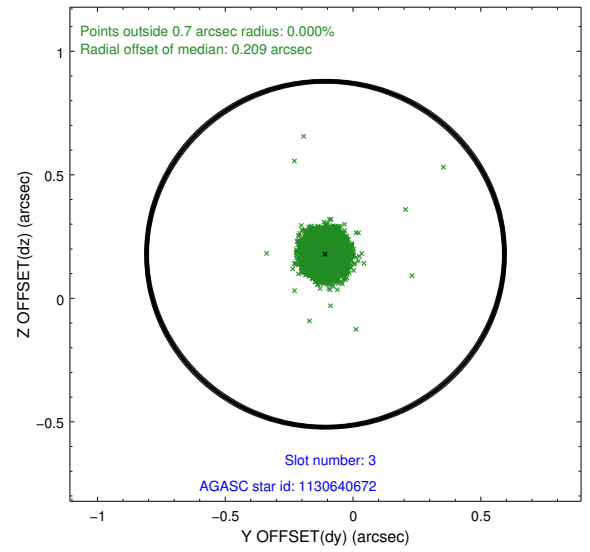
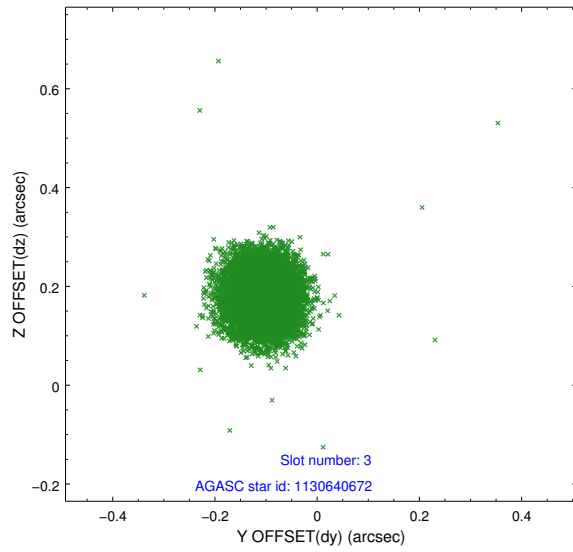


Slot Statistics

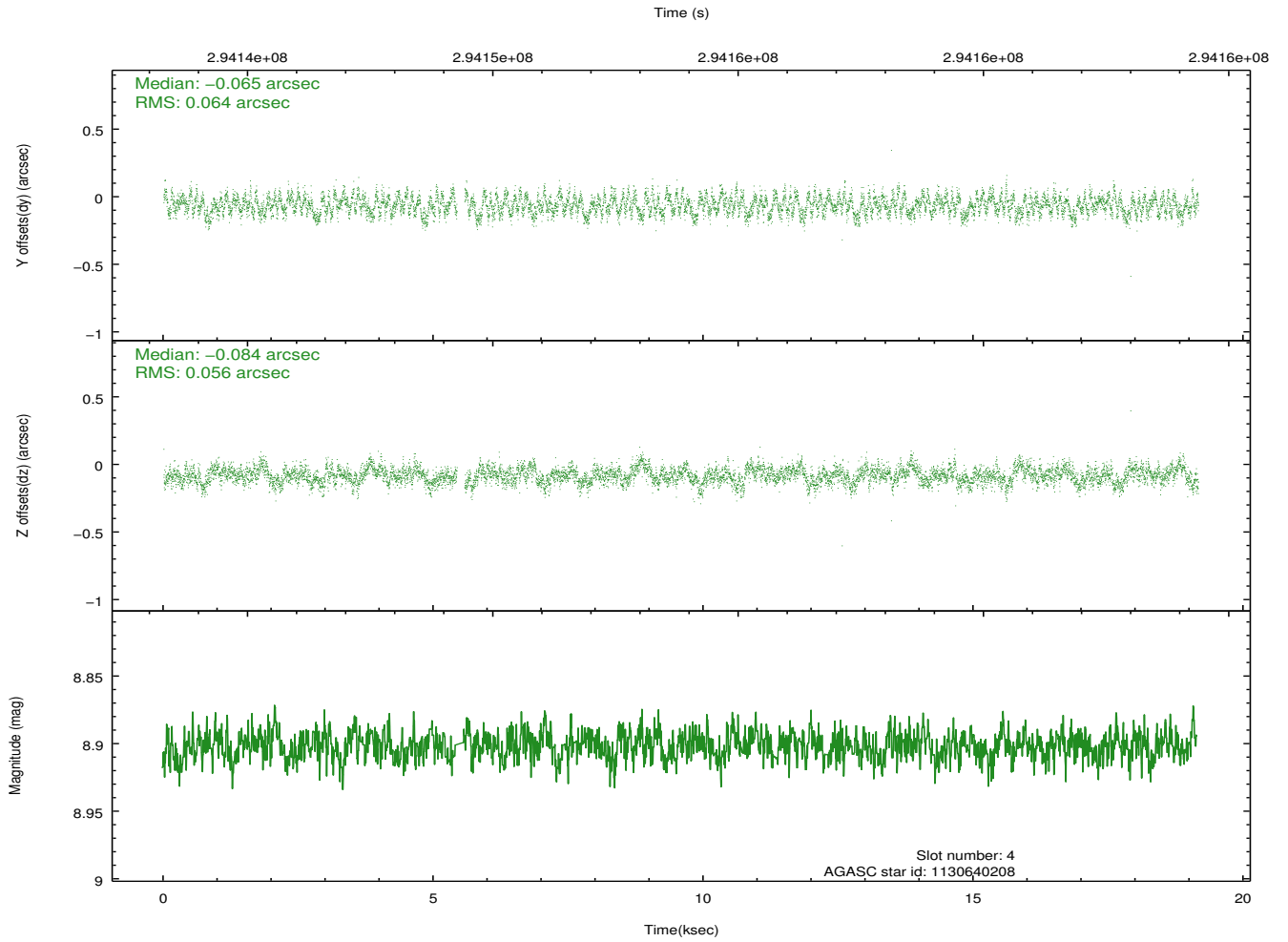
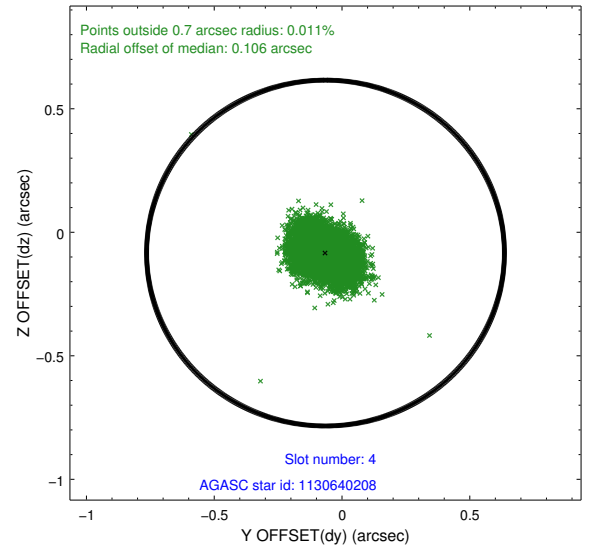
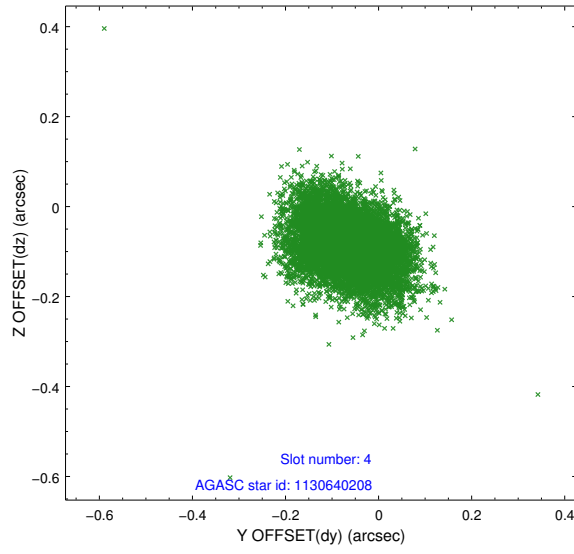
slot	status	id	mag	n_pts	med_dy	med_dz	dr1	dr2	ra	dec	mean_y	mean_z
0	FID	ACIS-S-1	7.19	4674	0.071	-0.037	0.008	0.013	0.000000	0.000000	929.58	-1730.57
1	FID	ACIS-S-4	7.19	4674	0.141	-0.004	0.007	0.012	0.000000	0.000000	2147.19	173.40
2	FID	ACIS-S-5	7.23	4674	-0.239	0.054	0.006	0.011	0.000000	0.000000	-1819.32	167.31
3	GUIDE	1130640672	8.26	9346	-0.108	0.179	0.061	0.096	162.096044	-59.540805	-1408.98	-118.40
4	GUIDE	1130640208	8.90	9275	-0.065	-0.084	0.090	0.146	163.152122	-59.182387	-1693.13	2191.78
5	GUIDE	1174033144	8.58	9345	0.012	0.127	0.064	0.105	161.168741	-60.059230	-459.48	-2442.26
6	GUIDE	1174042520	8.72	9337	0.212	-0.215	0.084	0.155	161.882835	-60.770414	2398.41	-2409.88
7	GUIDE	1174166216	8.03	9345	-0.049	-0.008	0.067	0.109	163.522199	-60.352910	2359.94	856.89

2.4 Star Slots

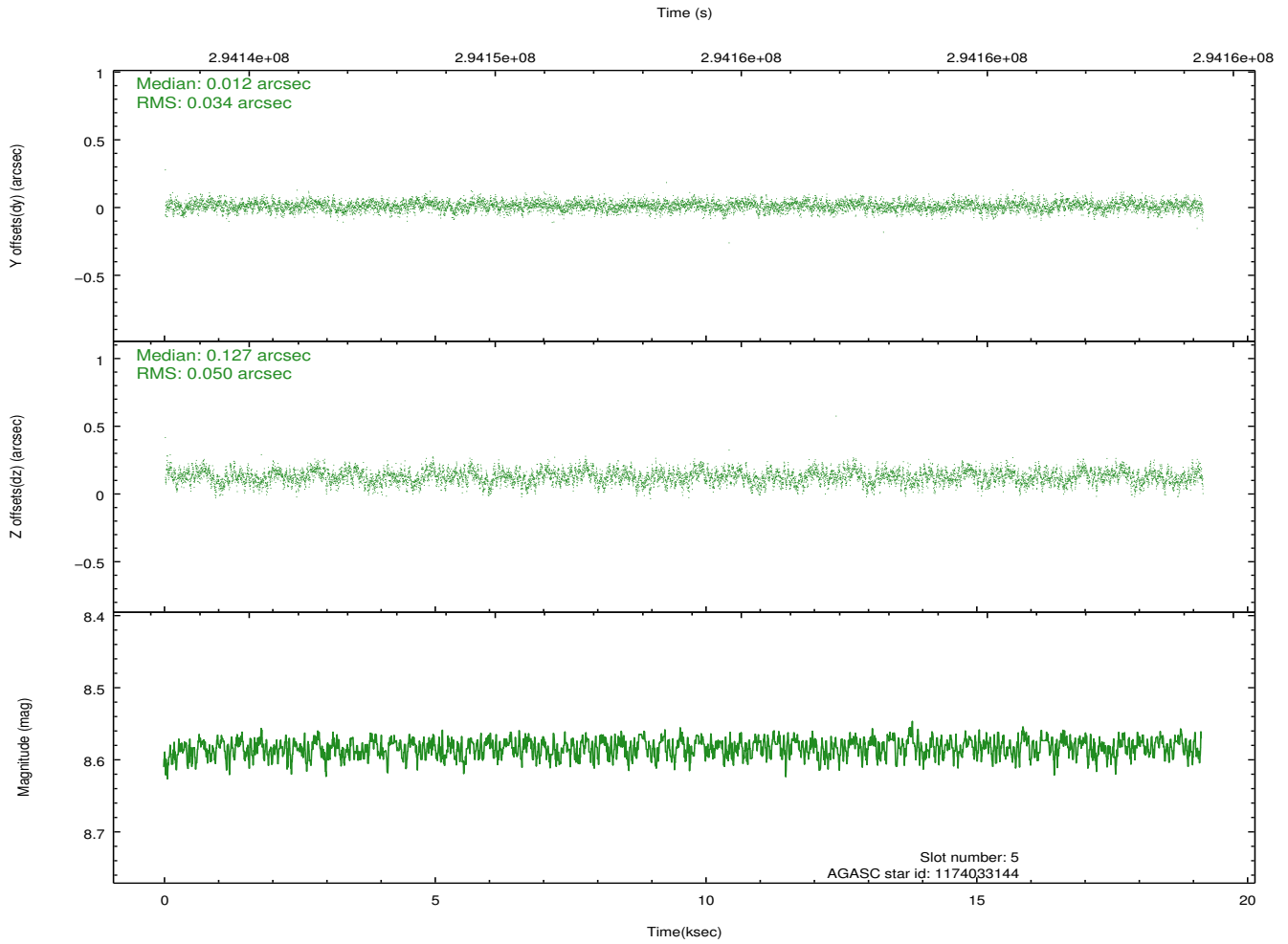
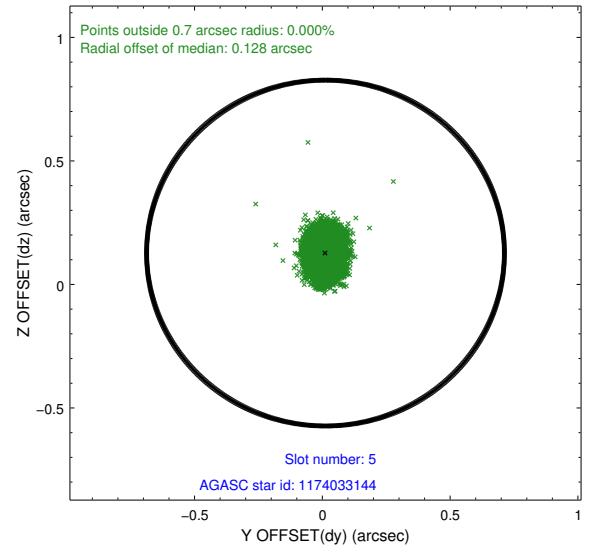
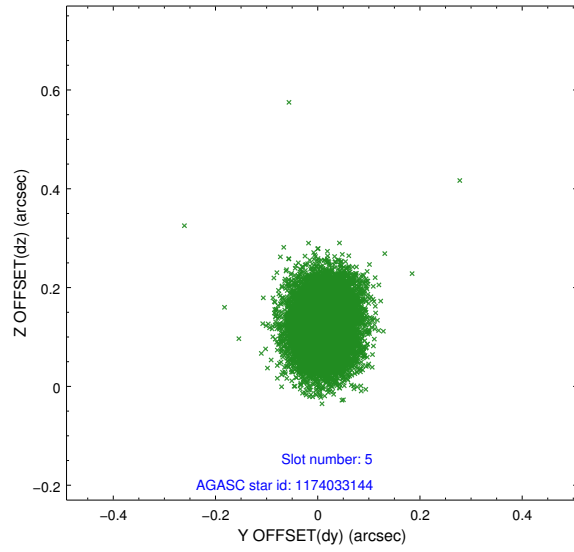
2.4.1 Slot 3



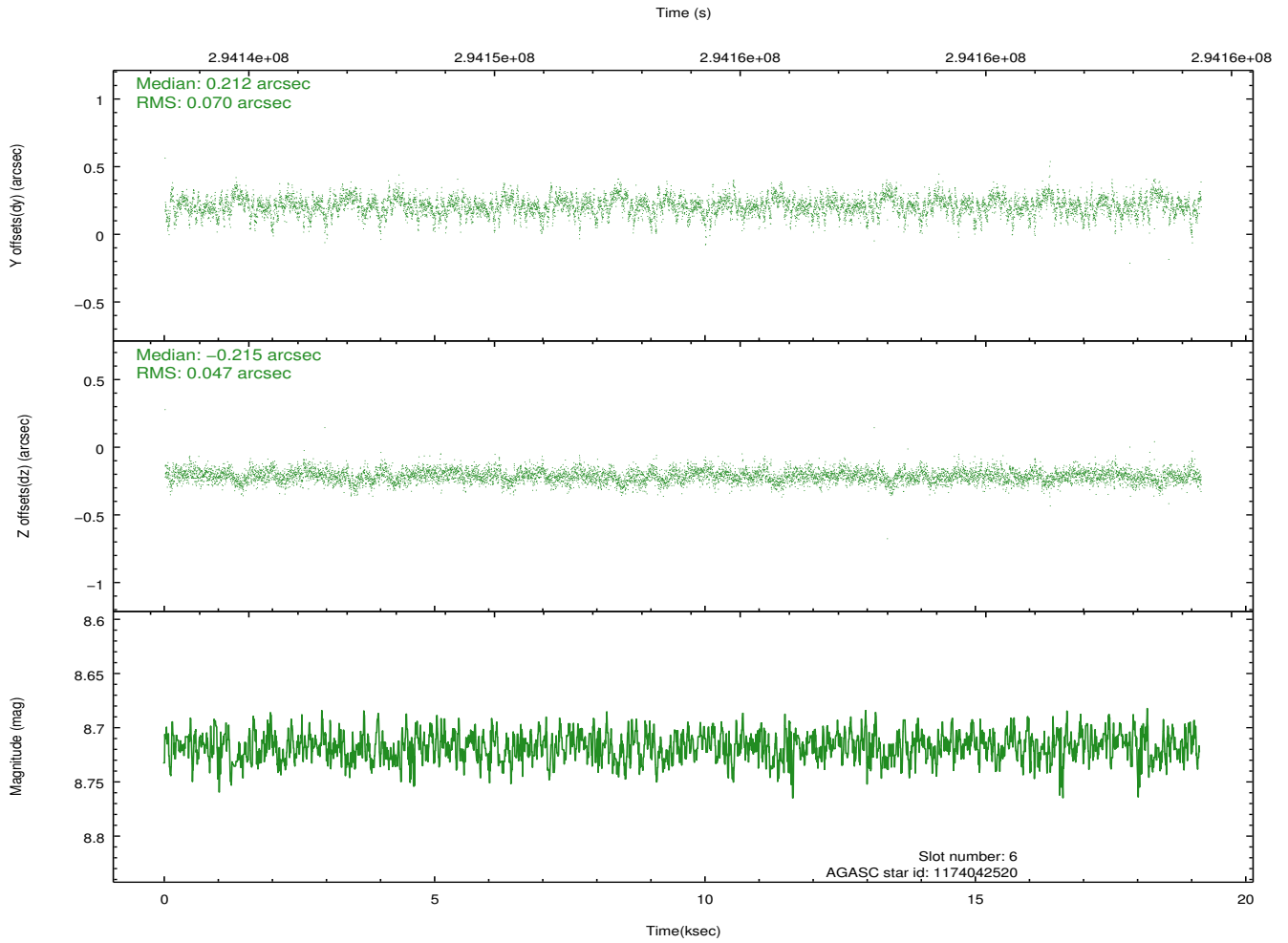
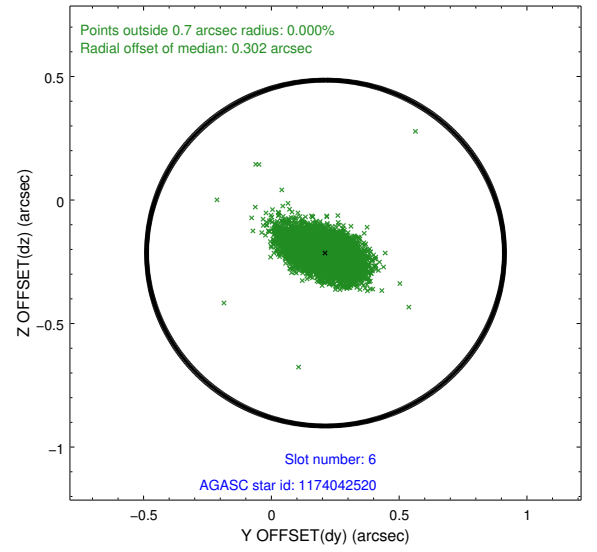
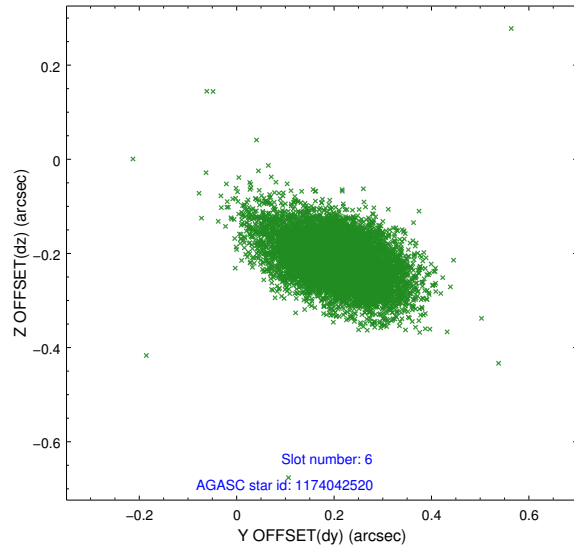
2.4.2 Slot 4



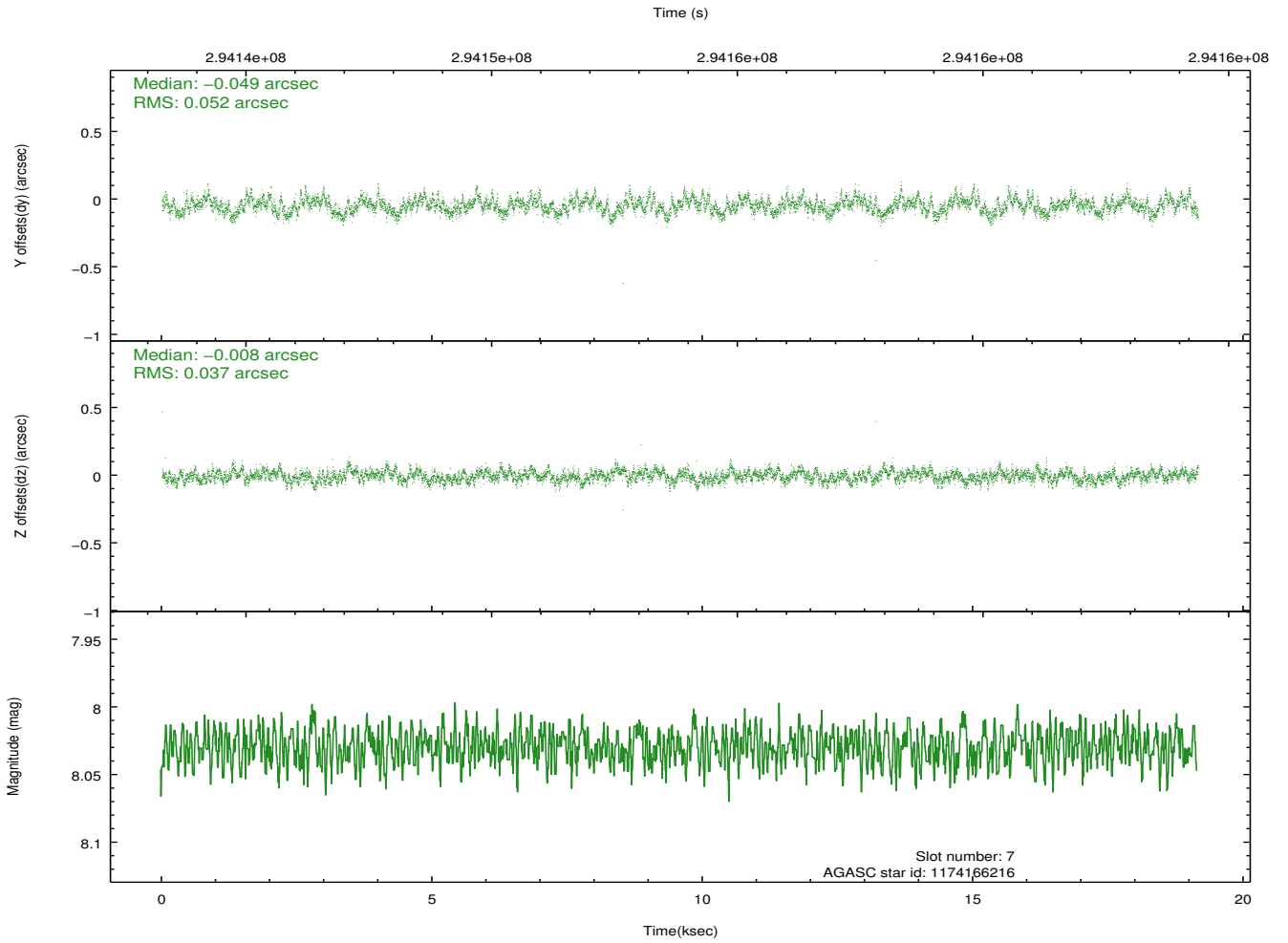
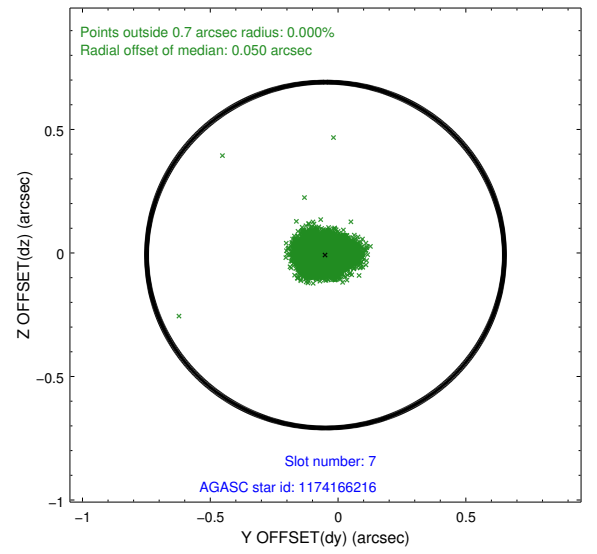
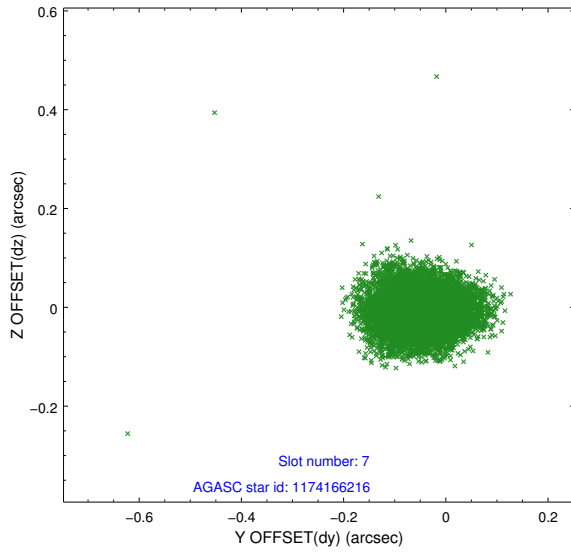
2.4.3 Slot 5



2.4.4 Slot 6

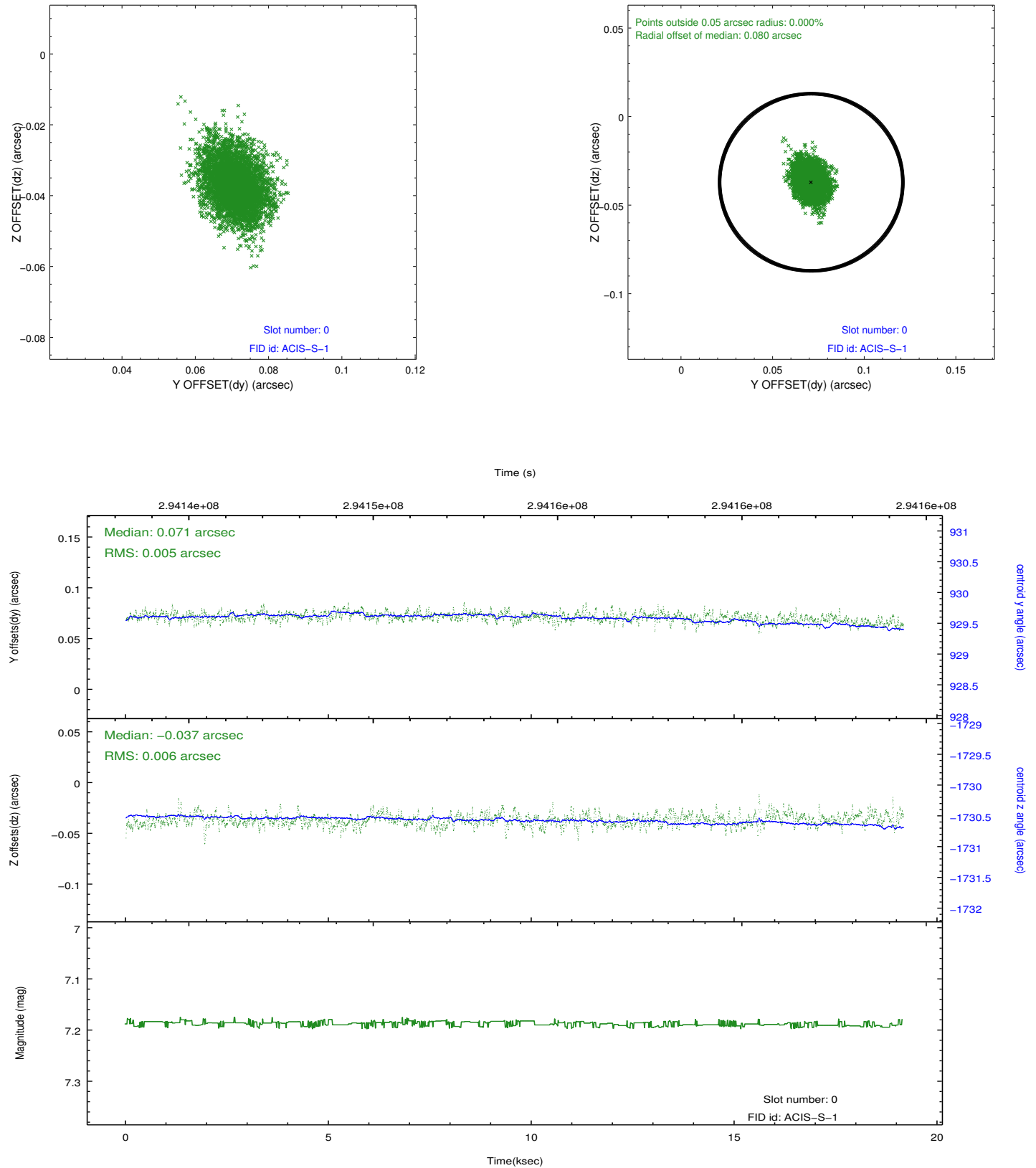


2.4.5 Slot 7

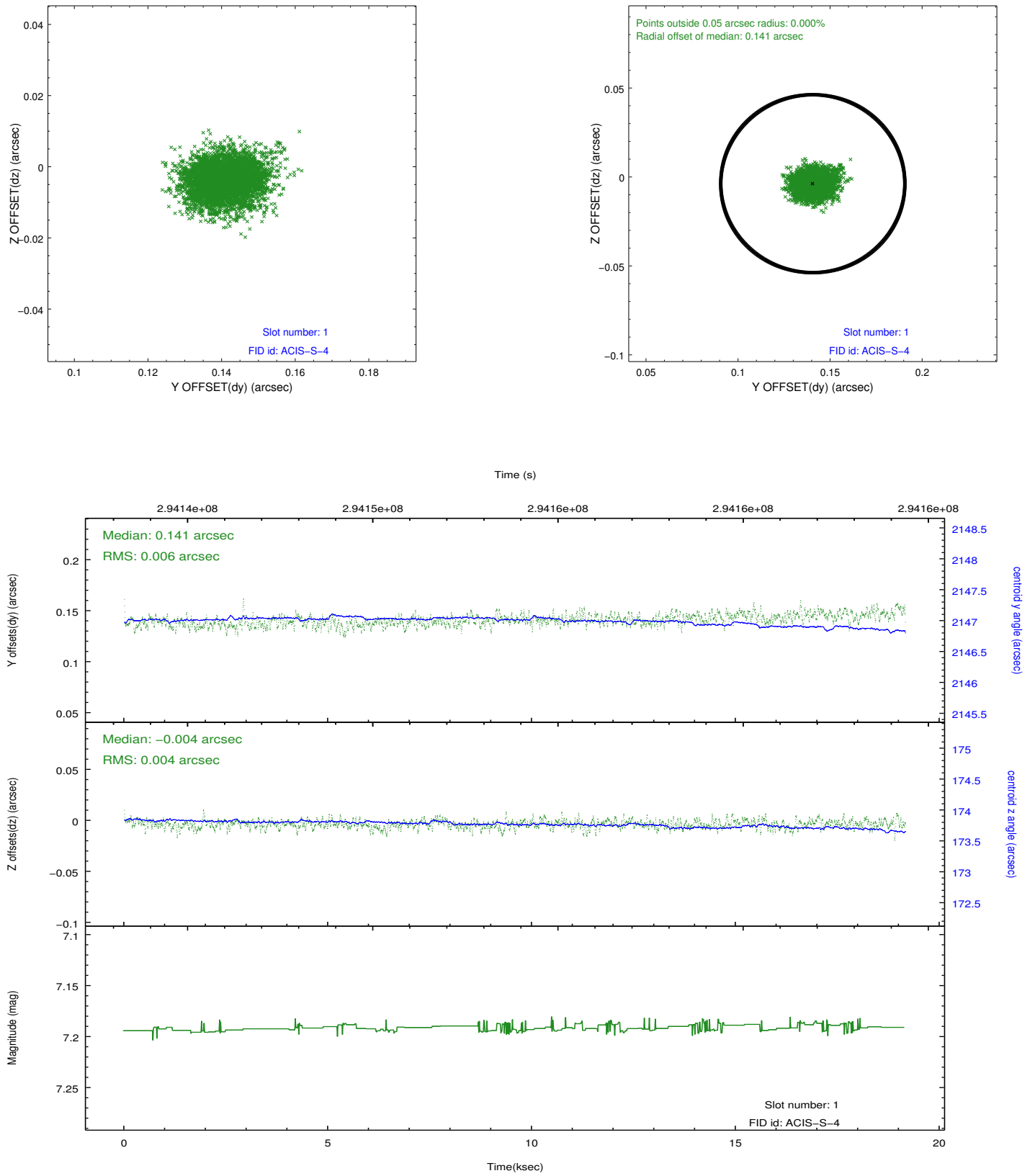


2.5 FID Slots

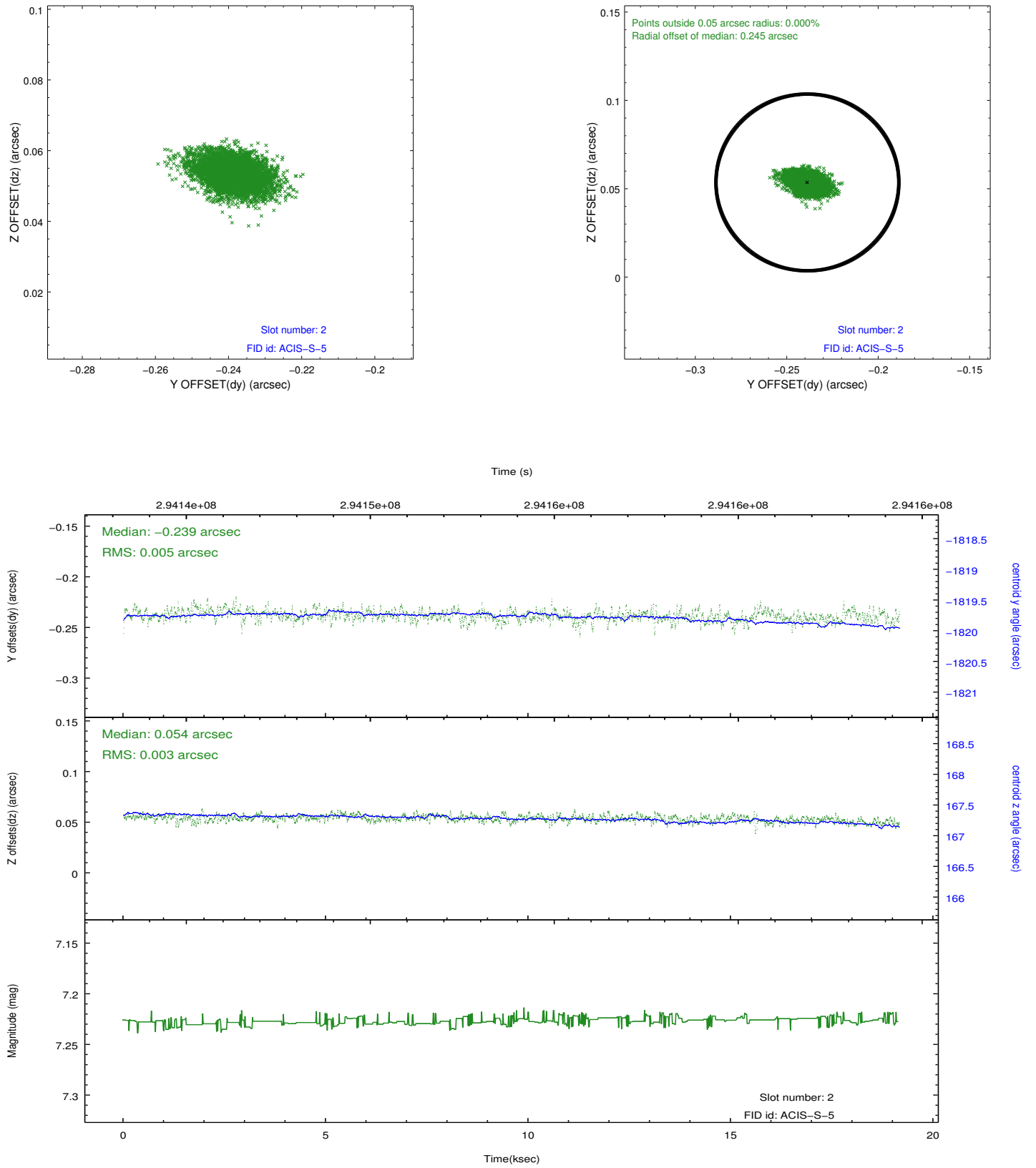
2.5.1 Slot 0



2.5.2 Slot 1



2.5.3 Slot 2



A Summary

A.1 Status

V&V Scientist	Joy Nichols
V&V Date (YYYY-MM-DD)	2012.04.24
V&V Edition	1
V&V Disposition and Status	OK
V&V Charge Time	19.157

A.2 Comments