

V&V Reference Report

L2 ASCDS Version : 8.4.3.1

Observation 7379 - L2 Version 2
Chandra X-Ray Center

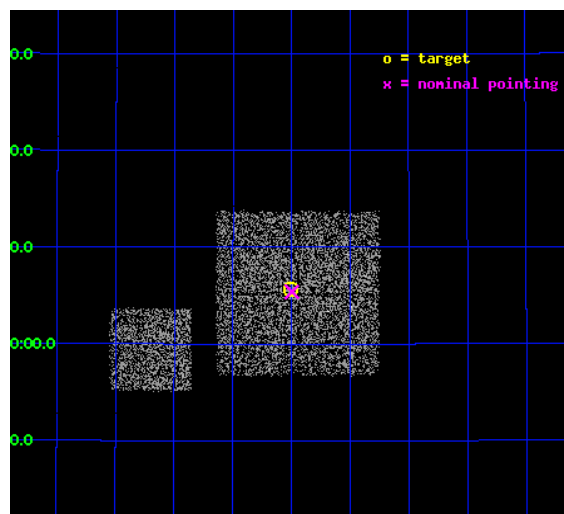
L2 Processing Date : Apr 7 2012

Contents

1	Front	2
2	OBI	3
2.1	OBI	3
2.1.1	Images	3
2.1.2	Bias	3
2.1.3	Parameters	4
2.1.4	Events	4
2.2	Compared Parameters	5
2.3	Aspect	6
2.4	Star Slots	9
2.4.1	Slot 3	9
2.4.2	Slot 4	10
2.4.3	Slot 5	11
2.4.4	Slot 6	12
2.4.5	Slot 7	13
2.5	FID Slots	14
2.5.1	Slot 0	14
2.5.2	Slot 1	15
2.5.3	Slot 2	16
A	Summary	17
A.1	Status	17
A.2	Comments	17

1 Front

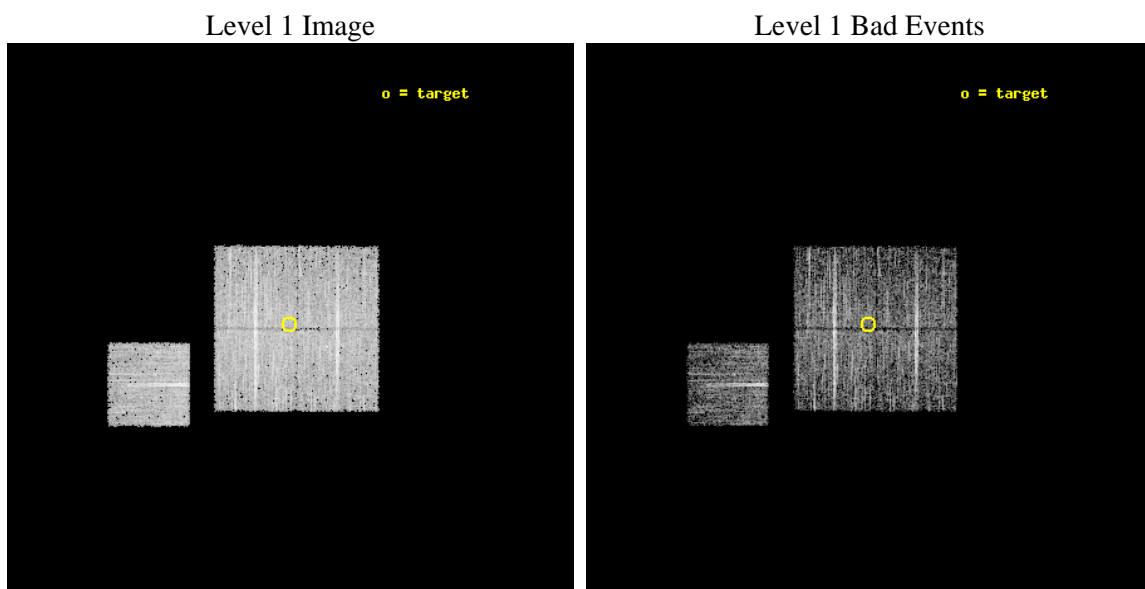
seq_num	900476	Sequence number
obs_id	7379	Observation id
title	Chandra Large Scale Survey of the NOAO Bootes Deep Field (A)	Propo
observer	Dr Stephen Murray	Principal investigator
object	Bootes2 22	Source name
dtcycle	0	
cycle	P	events from which exps? Prim/Second/Both
ra_targ	217.37658	Observer's specified target RA [deg]
dec_targ	35.094103	Observer's specified target Dec [deg]
ra_nom	217.37440327127	Nominal RA [deg]
dec_nom	35.089836274354	Nominal Dec [deg]
roll_nom	270.20994717092	Nominal Roll [deg]
revision	2	Processing version of data
ontime	4476.2329234481	Sum of GTIs [s]
livetime	4417.7476449485	Livetime [s]
ontime0	4476.1098034382	Sum of GTIs [s]
ontime1	4476.1508434415	Sum of GTIs [s]
ontime2	4476.1918834448	Sum of GTIs [s]
ontime3	4476.2329234481	Sum of GTIs [s]
ontime6	4476.0687634349	Sum of GTIs [s]
l2events	12484	Number of level 2 events



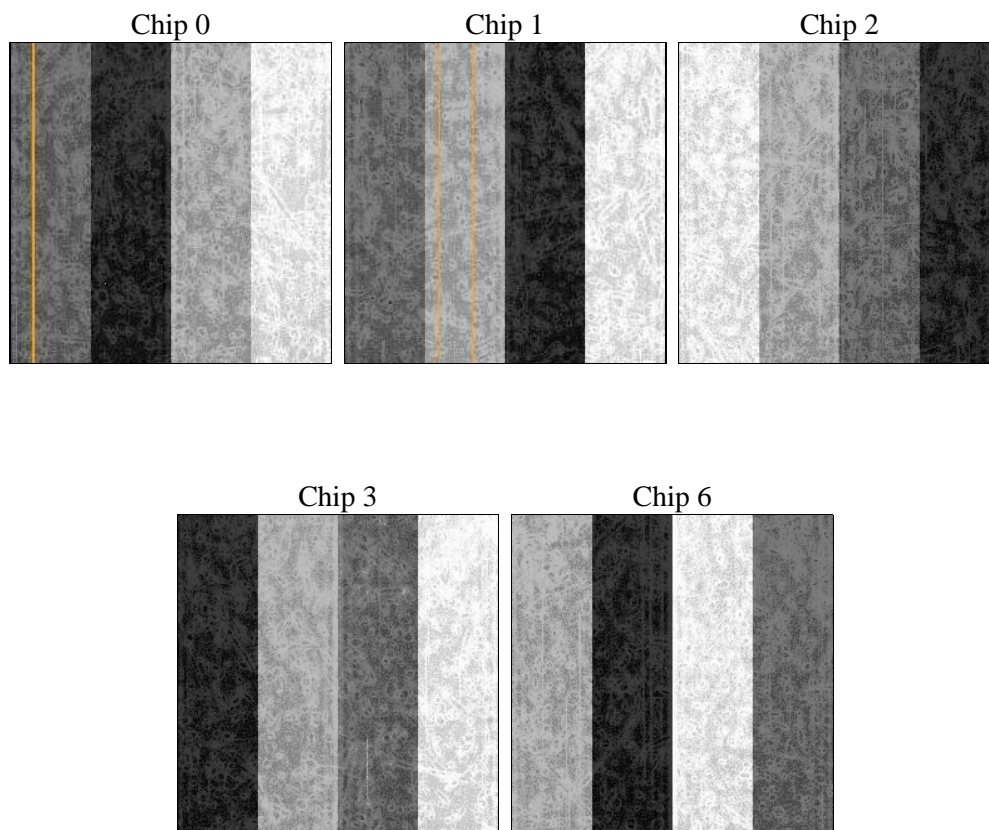
2 OBI

2.1 OBI

2.1.1 Images



2.1.2 Bias



2.1.3 Parameters

obi_num	0	Obi number	sched_exp_time	4700.000000	[s] Scheduled observation exposure time
ascdsver	8.4.3.1	Processing system revision	ontime	4476.2329234481	Sum of GTIs [s]
caldsver	4.4.9	 	ontime0	4476.1098034382	Sum of GTIs [s]
date	2012-04-07T10:12:06	Date and time of file creation	ontime1	4476.1508434415	Sum of GTIs [s]
revision	2	Processing version of data	ontime2	4476.1918834448	Sum of GTIs [s]
			ontime3	4476.2329234481	Sum of GTIs [s]
			ontime6	4476.0687634349	Sum of GTIs [s]
			l1events	159384	Number of level 1 events

2.1.4 Events

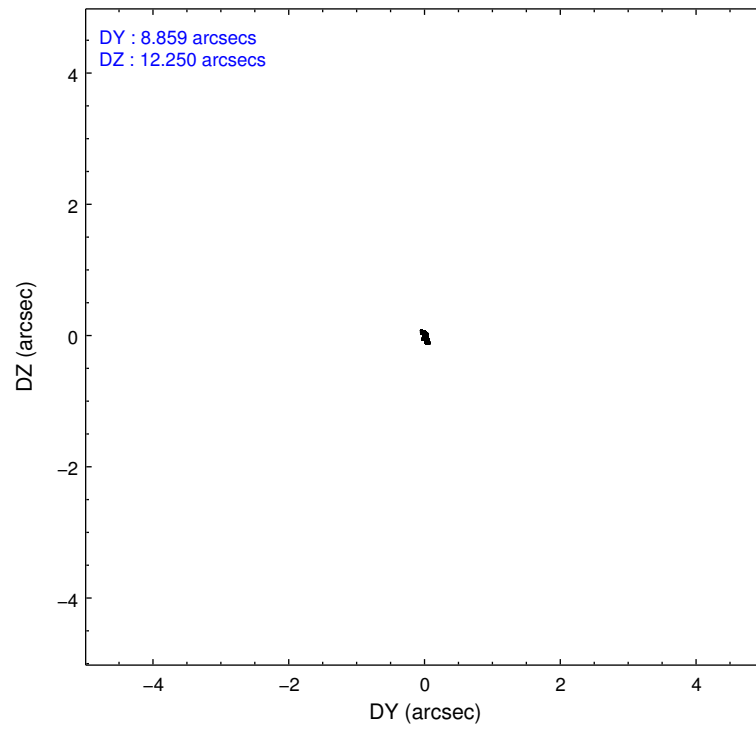
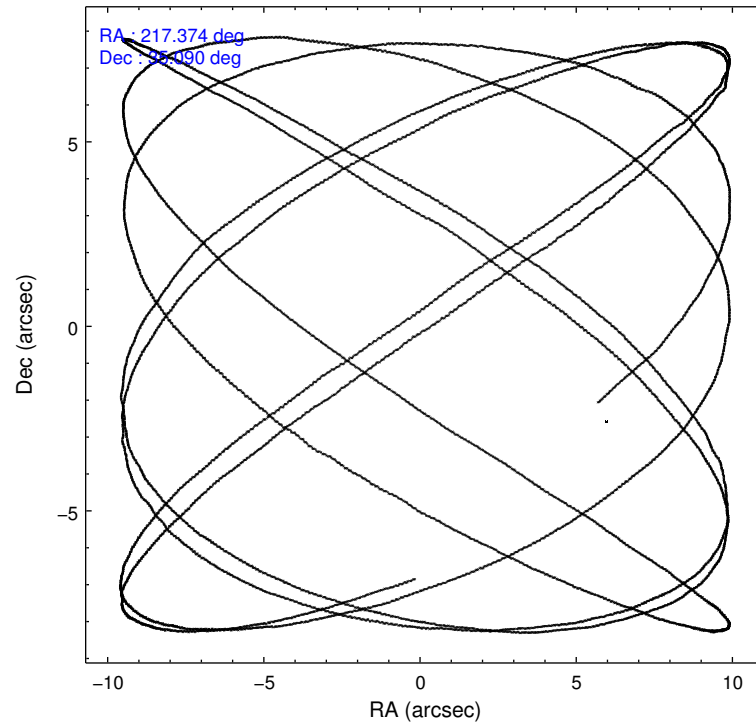
	ccd 0	ccd 1	ccd 2	ccd 3	ccd 6
level 1 events	31473	28959	35175	32624	31153
rejected events	28340	25658	32153	29804	28081
rejected %	90%	88%	91%	91%	90%

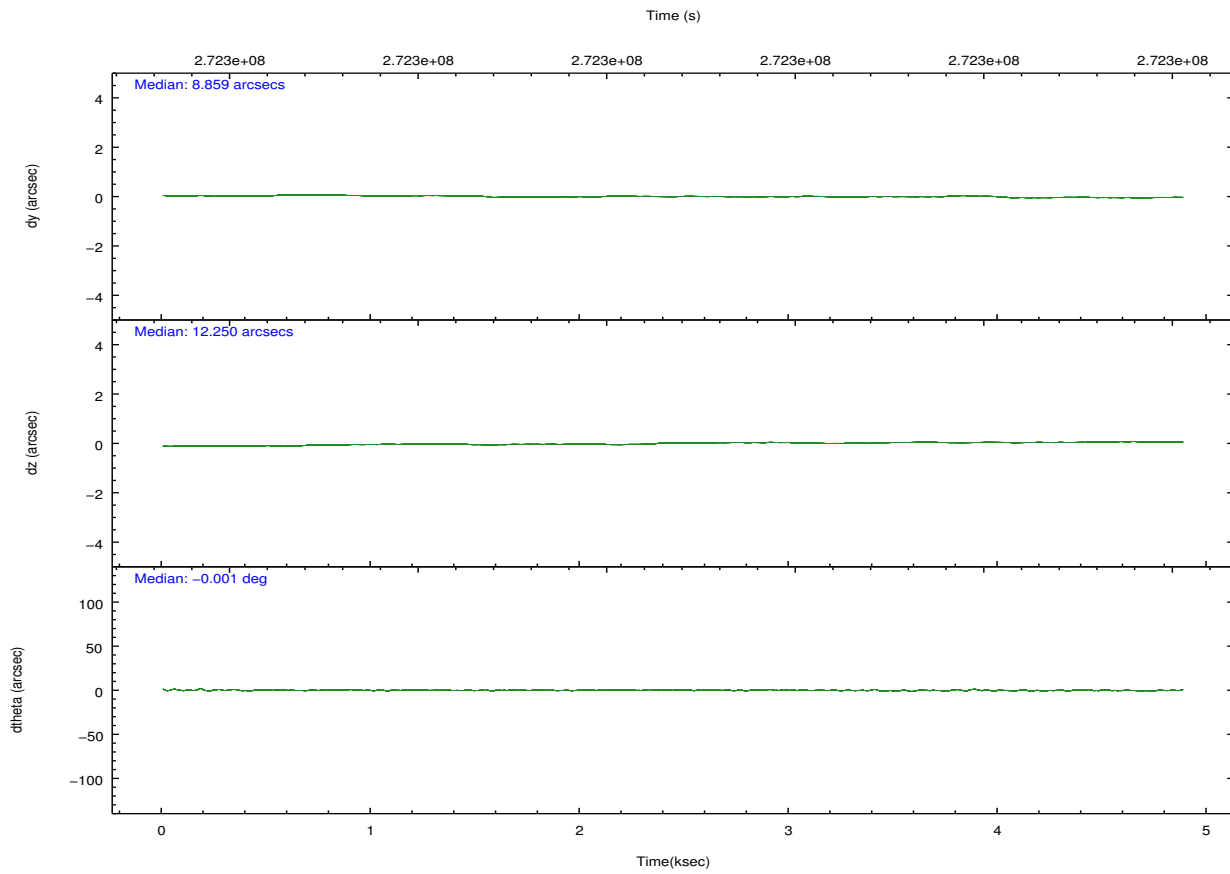
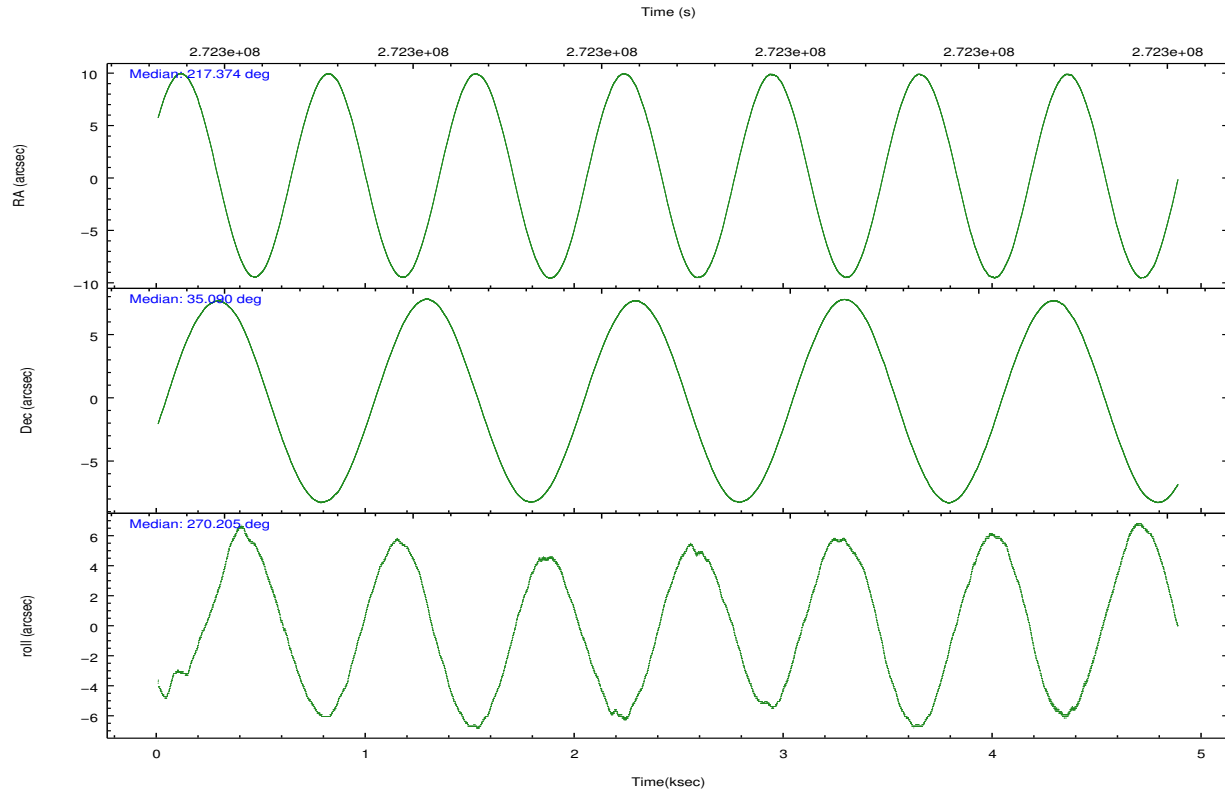
	ccd 0	ccd 1	ccd 2	ccd 3	ccd 6
grade 0 events	1186	1127	1102	1009	1108
	3%	3%	3%	3%	3%
grade 1 events	18	9	16	22	18
	0%	0%	0%	0%	0%
grade 2 events	772	752	763	613	691
	2%	2%	2%	1%	2%
grade 3 events	319	375	321	350	335
	1%	1%	0%	1%	1%
grade 4 events	329	385	333	319	338
	1%	1%	0%	0%	1%
grade 5 events	914	1034	887	1098	959
	2%	3%	2%	3%	3%
grade 6 events	529	669	506	533	607
	1%	2%	1%	1%	1%
grade 7 events	27406	24608	31247	28680	27097
	87%	84%	88%	87%	86%

2.2 Compared Parameters

Parameter	Planned	Actual	Parameter	Planned	Actual
Instrument	ACIS	ACIS	Obspar format version number	7	7
Detector	ACIS-01236	ACIS-01236	Obspar file type	PREDICTED	ACTUAL
Grating	NONE	NONE	Obspar update status	NONE	UPDATED
Data mode	VFAINT	VFAINT	Number of optional ACIS chips dropped	0	0
Observation mode	POINTING	POINTING	On-chip summing requested	N	N
[deg] Pointing RA	217.357451	217.3744032712732	Subarray requested	NONE	NONE
[deg] Pointing Dec	35.113428	35.08983627435352	Alternating exposures requested	N	N
[deg] Pointing Roll	270.011015	270.2099471709163	[s] Primary exposure time	0.000000	3.1
[mm] SIM focus pos	-0.782348	-0.7809083437167272			
[mm] SIM defocus	0	0.001439871863259334			
[mm] SIM translation stage pos	-233.592463	-233.5874344608287			
[mm] SIM translation stage offset	0	-0.005018542100998502			
[s] Observation start time (MET)	272300094.184000	272299718.19094			
Observation start date	2006-08-18T14:53:49	2006-08-18T14:48:38			
[s] Observation end time (MET)	272304794.184000	272304928.26618			
Observation end date	2006-08-18T16:12:09	2006-08-18T16:15:28			
Read mode	TIMED	TIMED			

2.3 Aspect



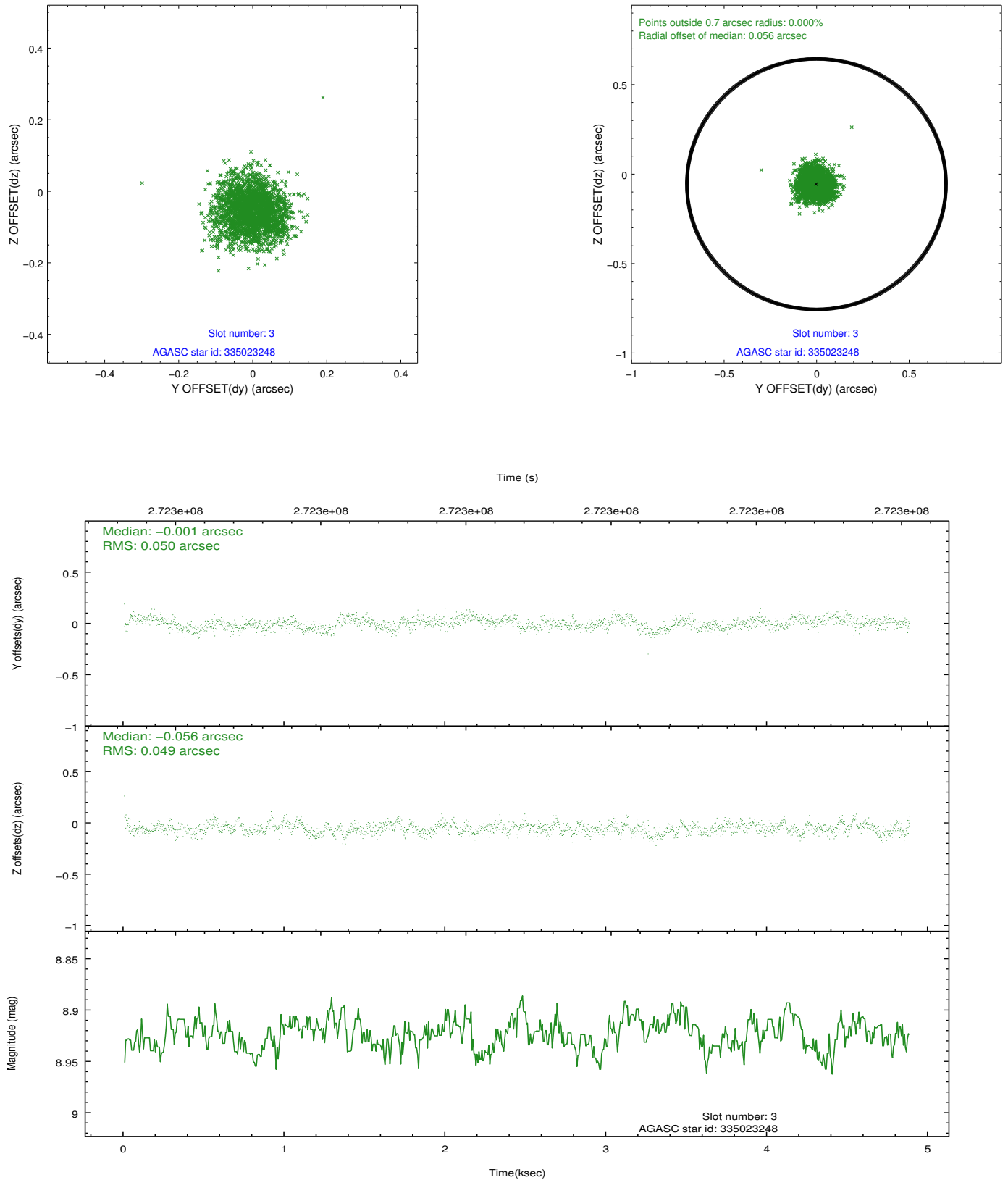


Slot Statistics

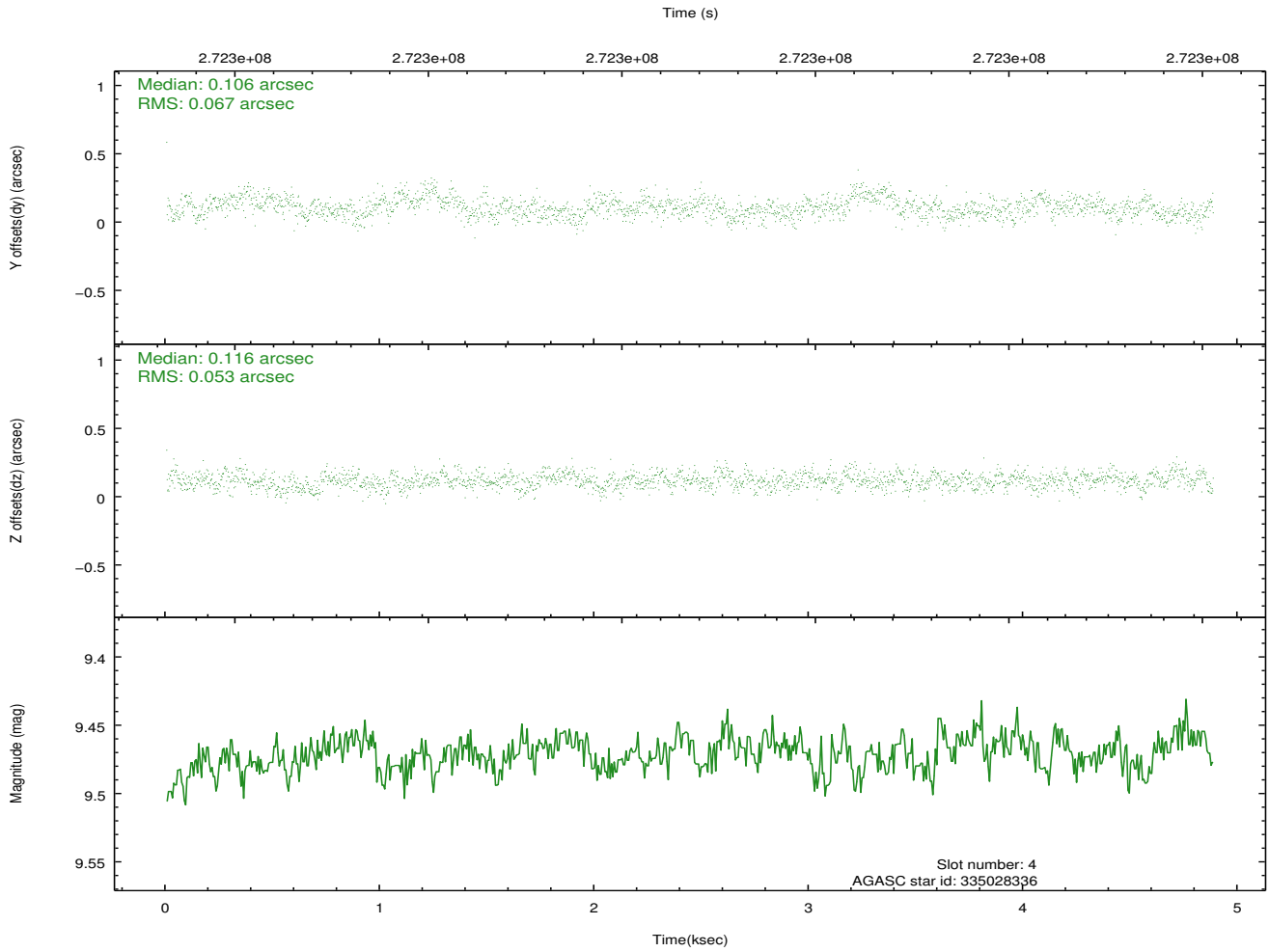
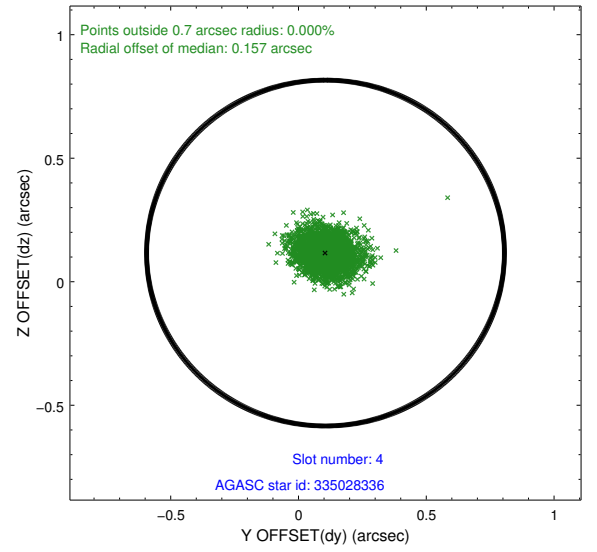
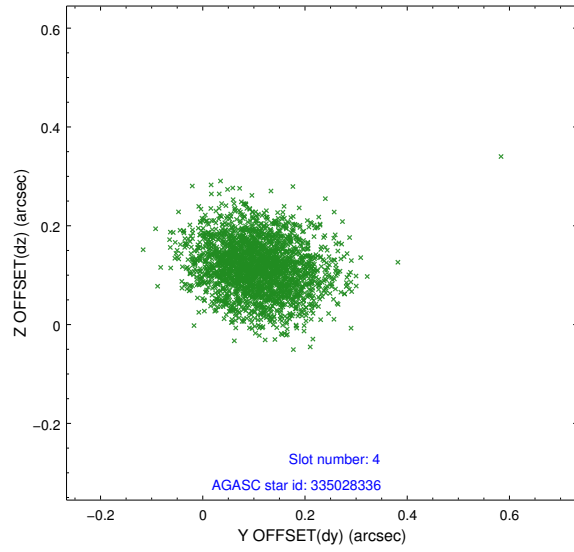
slot	status	id	mag	n_pts	med_dy	med_dz	dr1	dr2	ra	dec	mean_y	mean_z
0	FID	ACIS-I-1	7.24	1191	0.063	-0.047	0.007	0.012	0.000000	0.000000	930.82	-835.83
1	FID	ACIS-I-5	7.23	1191	-0.206	0.063	0.007	0.011	0.000000	0.000000	-1816.84	1061.19
2	FID	ACIS-I-6	7.24	1191	0.051	0.054	0.008	0.013	0.000000	0.000000	395.03	1707.07
3	GUIDE	335023248	8.92	2382	-0.001	-0.056	0.075	0.120	217.634832	34.944512	607.55	818.55
4	GUIDE	335028336	9.47	2380	0.106	0.116	0.093	0.146	217.189840	34.665629	1612.48	-495.87
5	GUIDE	335030384	8.85	2382	0.042	-0.073	0.070	0.119	216.806407	34.722197	1405.03	-1630.82
6	GUIDE	335414448	7.36	2382	-0.140	0.023	0.060	0.091	216.992261	35.577204	-1670.14	-1069.25
7	GUIDE	335422272	9.47	2379	-0.007	-0.007	0.089	0.144	217.586135	35.522660	-1474.41	669.99

2.4 Star Slots

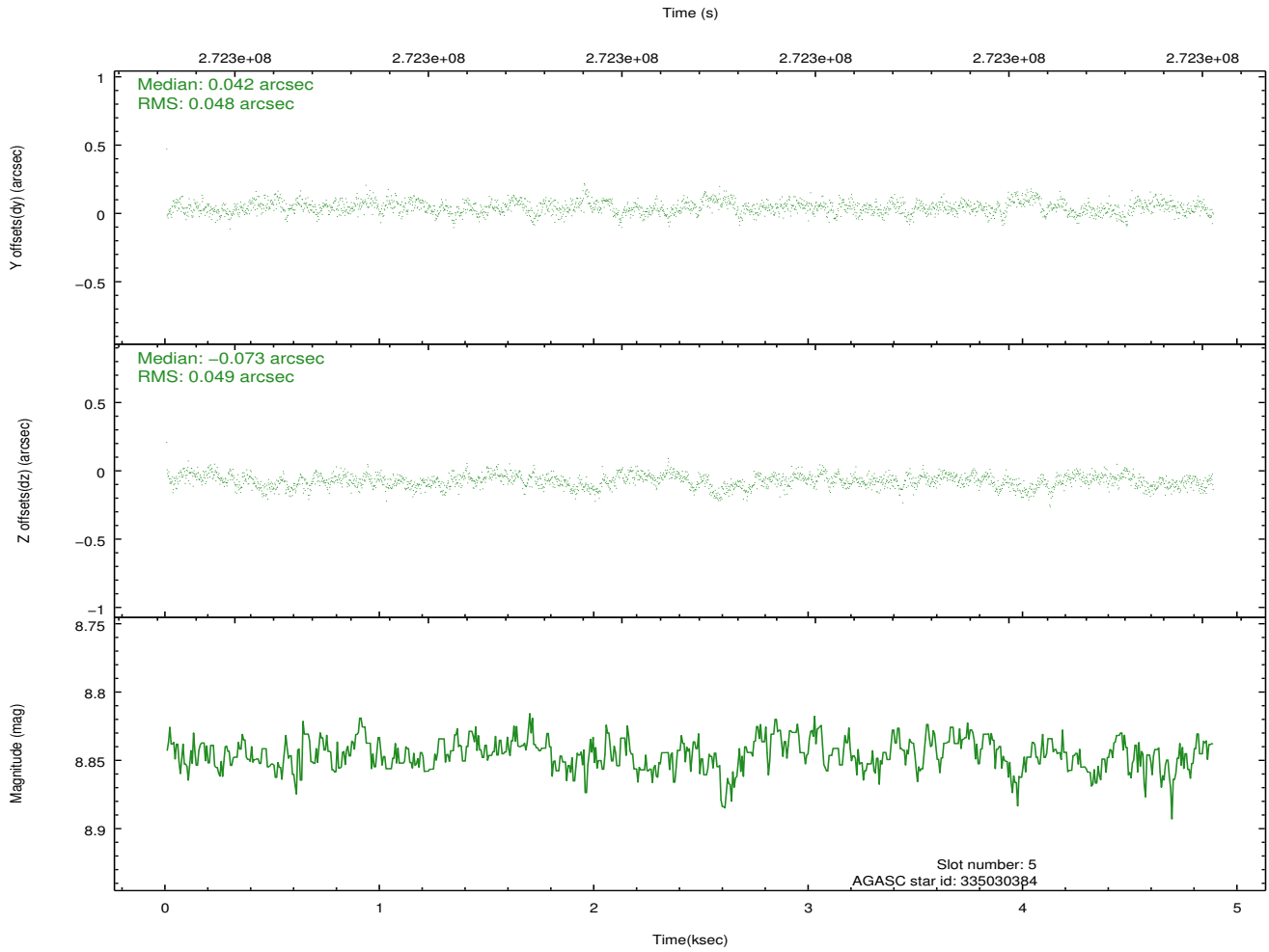
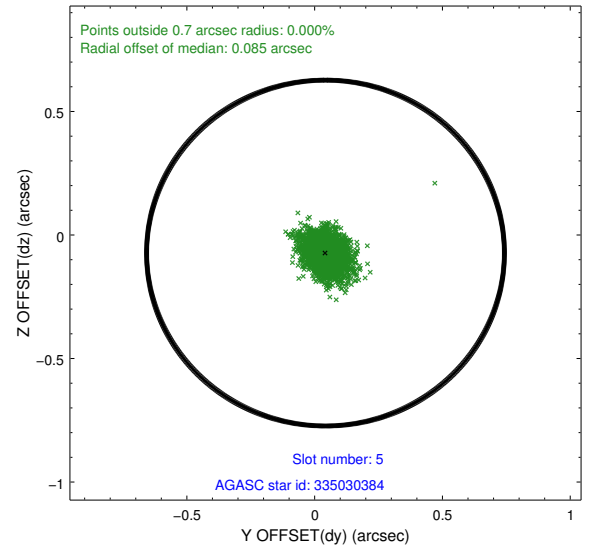
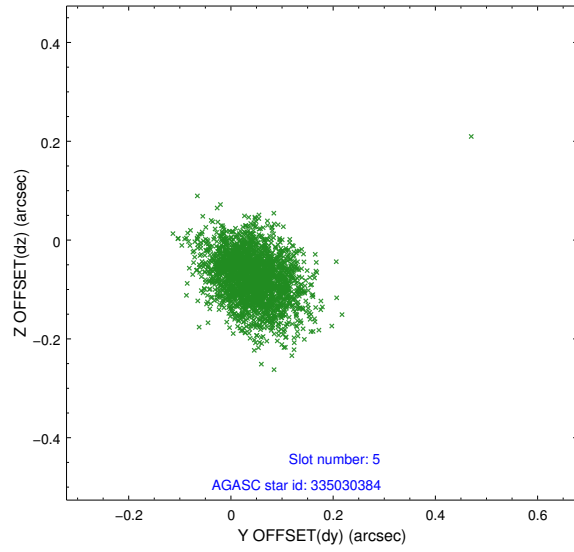
2.4.1 Slot 3



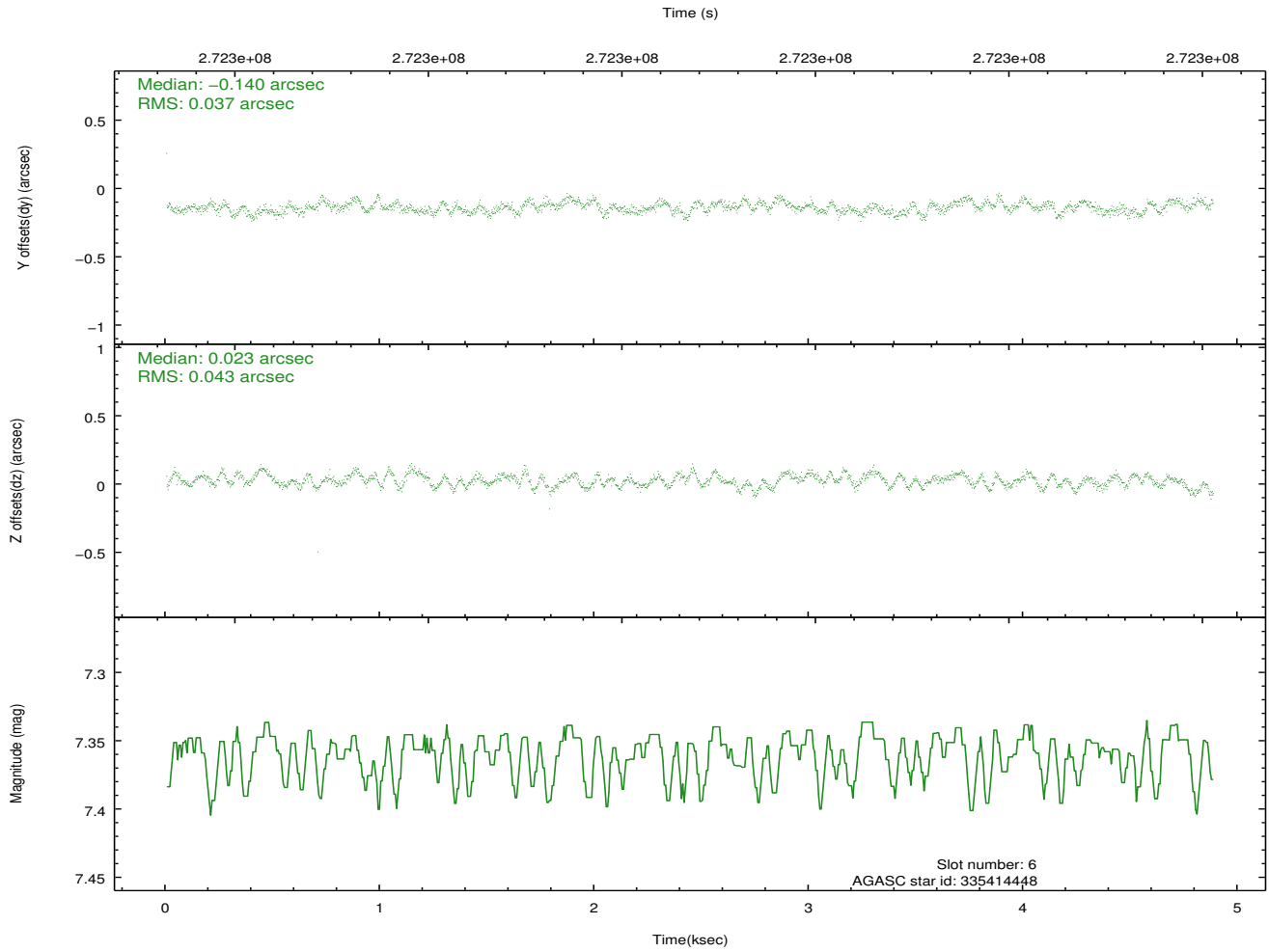
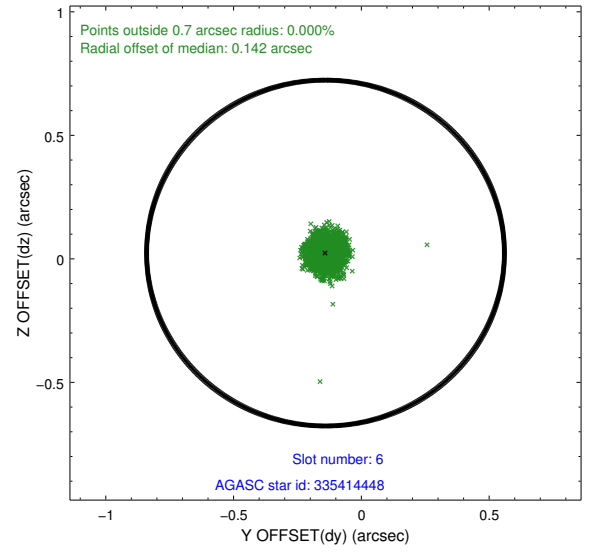
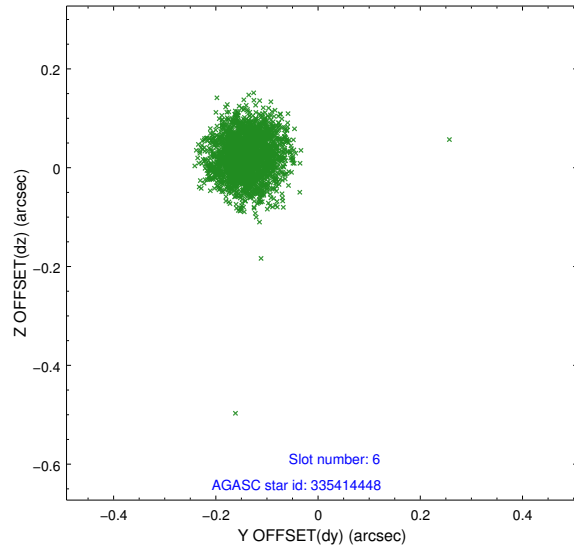
2.4.2 Slot 4



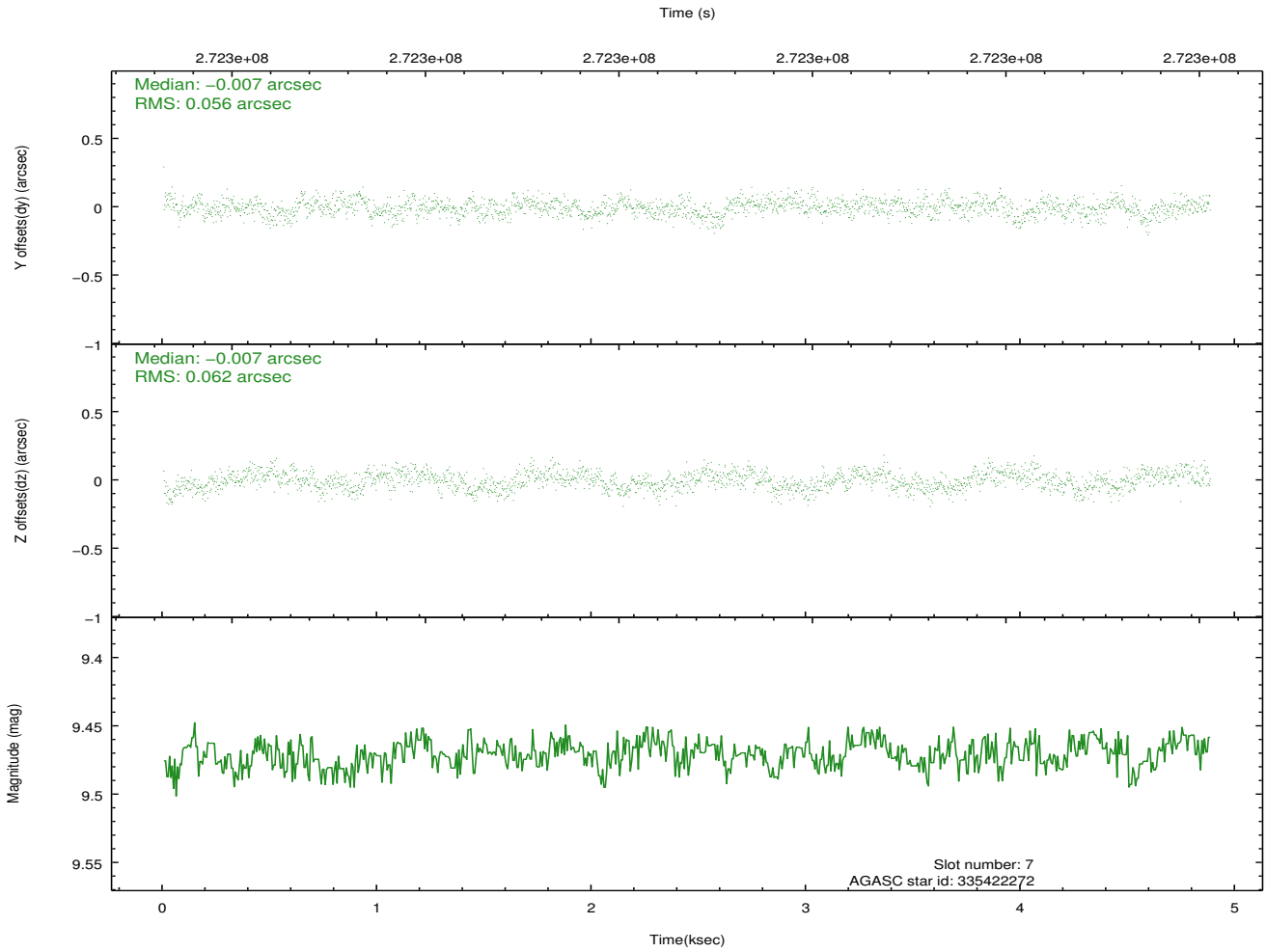
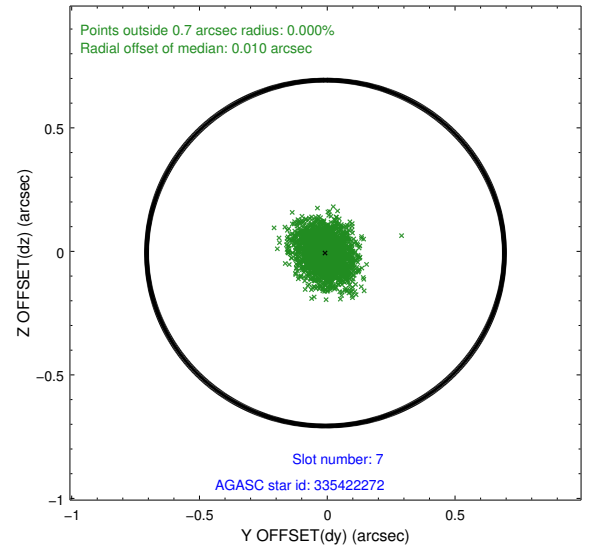
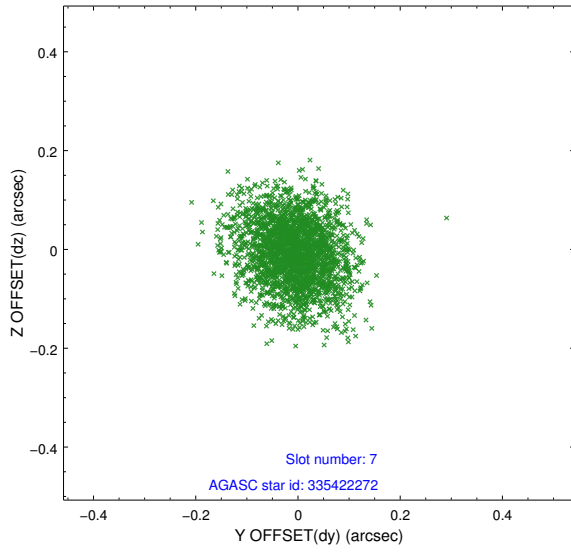
2.4.3 Slot 5



2.4.4 Slot 6

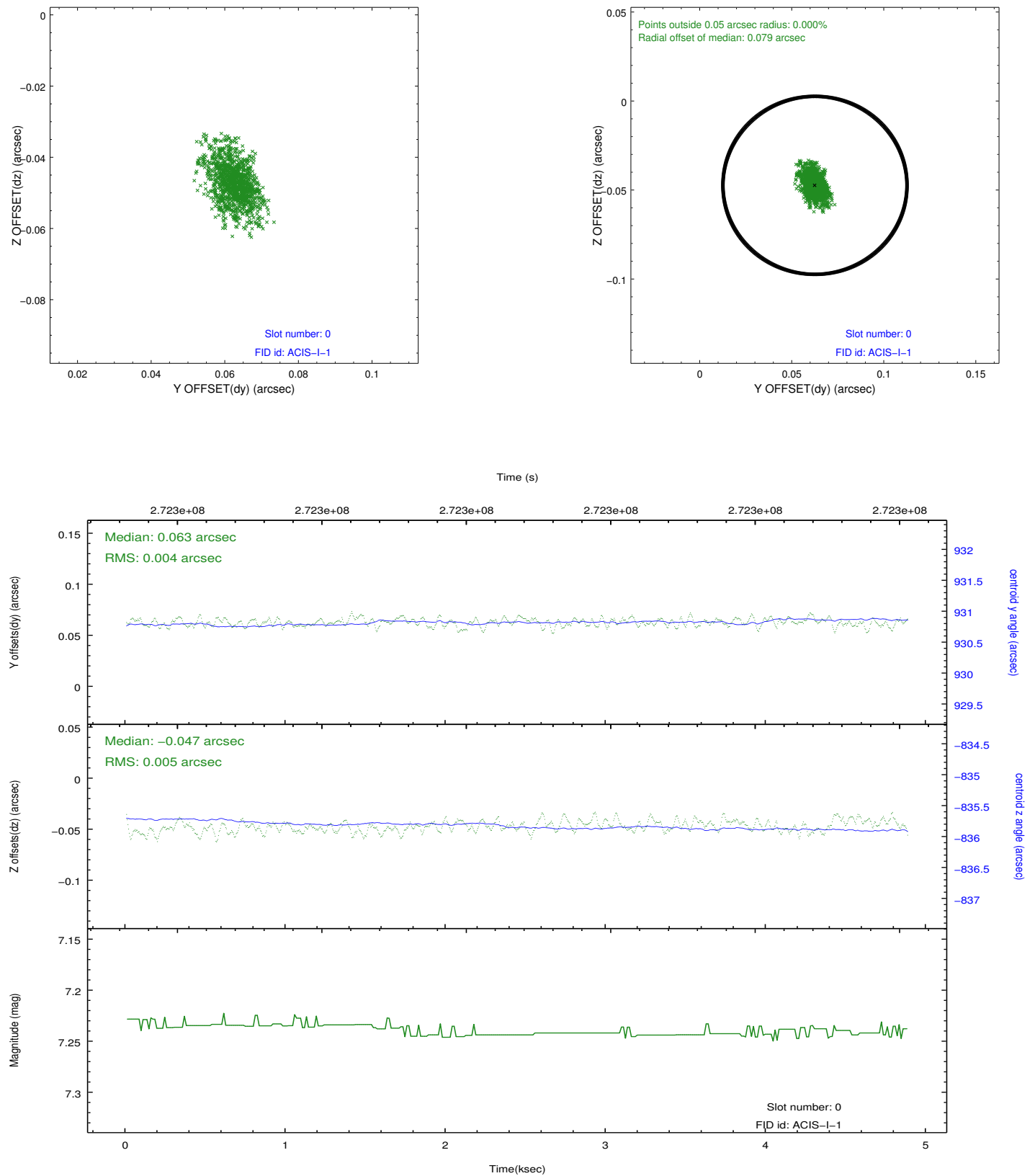


2.4.5 Slot 7

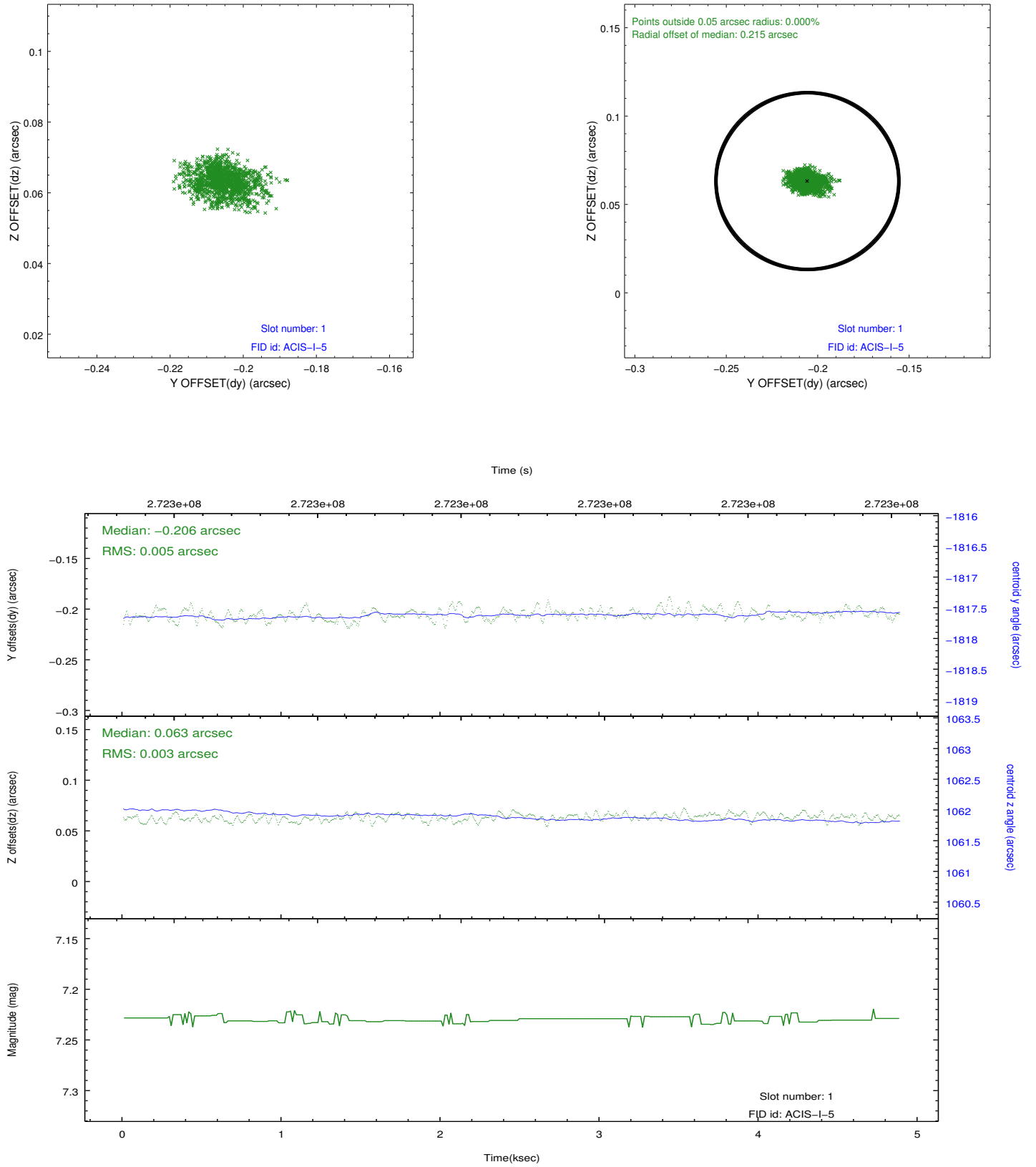


2.5 FID Slots

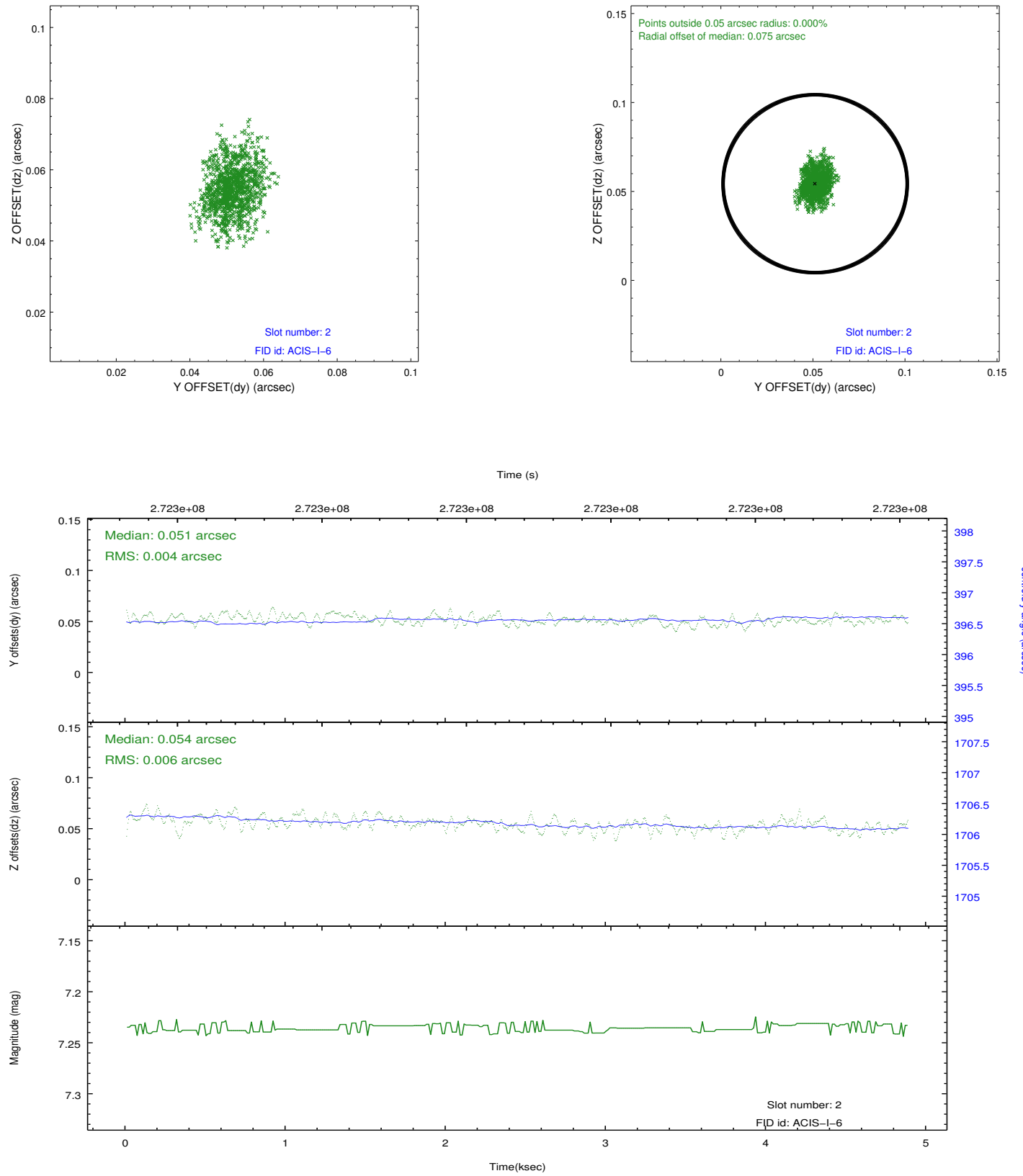
2.5.1 Slot 0



2.5.2 Slot 1



2.5.3 Slot 2



A Summary

A.1 Status

V&V Scientist	Jen Lauer
V&V Date (YYYY-MM-DD)	2012.04.08
V&V Edition	1
V&V Disposition and Status	OK
V&V Charge Time	4.47640003

A.2 Comments