

V&V Reference Report

L2 ASCDS Version : 7.6.10

Observation 659 - L2 Version 001
Chandra X-Ray Center

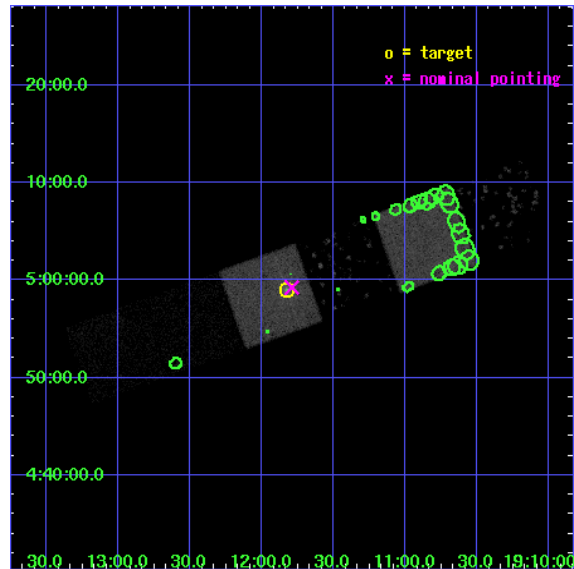
L2 Processing Date : May 27 2007

Contents

1	Front	2
2	OBI	3
2.1	OBI	3
2.1.1	Images	3
2.1.2	Bias	3
2.1.3	Parameters	4
2.1.4	Events	4
2.2	Compared Parameters	5
2.3	Aspect	6
2.4	Star Slots	9
2.4.1	Slot 3	9
2.4.2	Slot 4	10
2.4.3	Slot 5	11
2.4.4	Slot 6	12
2.4.5	Slot 7	13
2.5	FID Slots	14
2.5.1	Slot 0	14
2.5.2	Slot 1	15
2.5.3	Slot 2	16
3	Point Sources	17
A	Summary	18
A.1	Status	18
A.2	Comments	18

1 Front

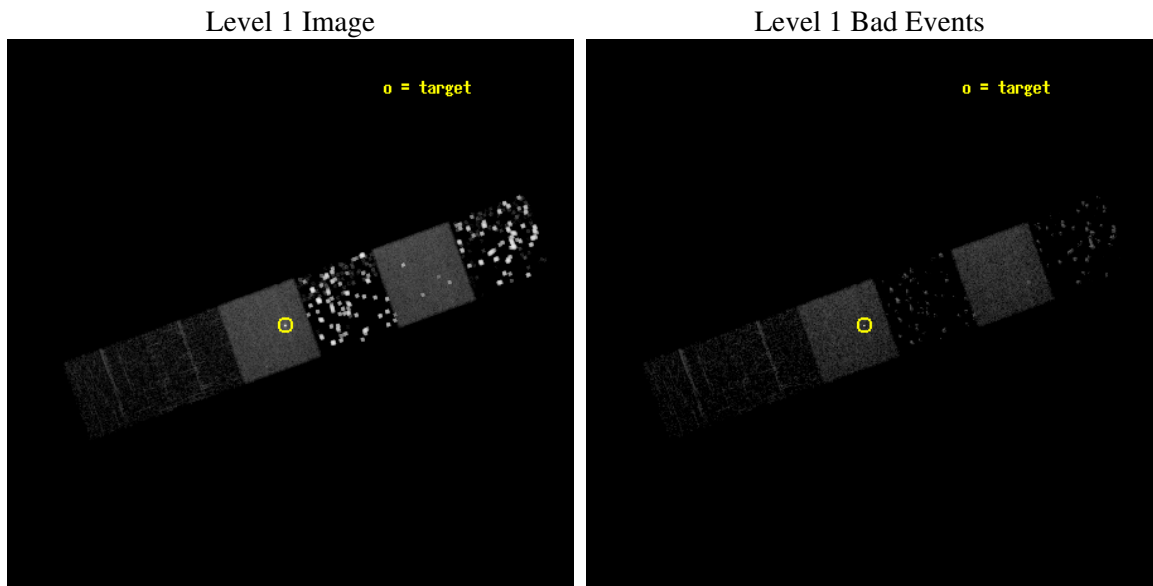
seq_num	400026
obs_id	659
title	AN X-RAY IMAGING SURVEY OF JETS FROM X-RAY BINARIES : ENERGETICS OF OUTFLOWS FROM NEUTRON STARS AND BLACK HOLES
observer	Prof. Rob Fender
object	SS 433 (EAST JET)
dtcycle	0
cycle	P
ra_targ	287.95625
dec_targ	4.982778
ra_nom	287.94754512499
dec_nom	4.9878305897396
roll_nom	160.15738487146
revision	3
ontime	9780.2698366344
livetime	9656.4261709915
ontime4	710.70089301467
ontime5	9948.8000092655
ontime6	879.35801281035
ontime7	9780.2698366344
ontime8	1731.7922116667
ontime9	1728.5921618491
l2events	81343



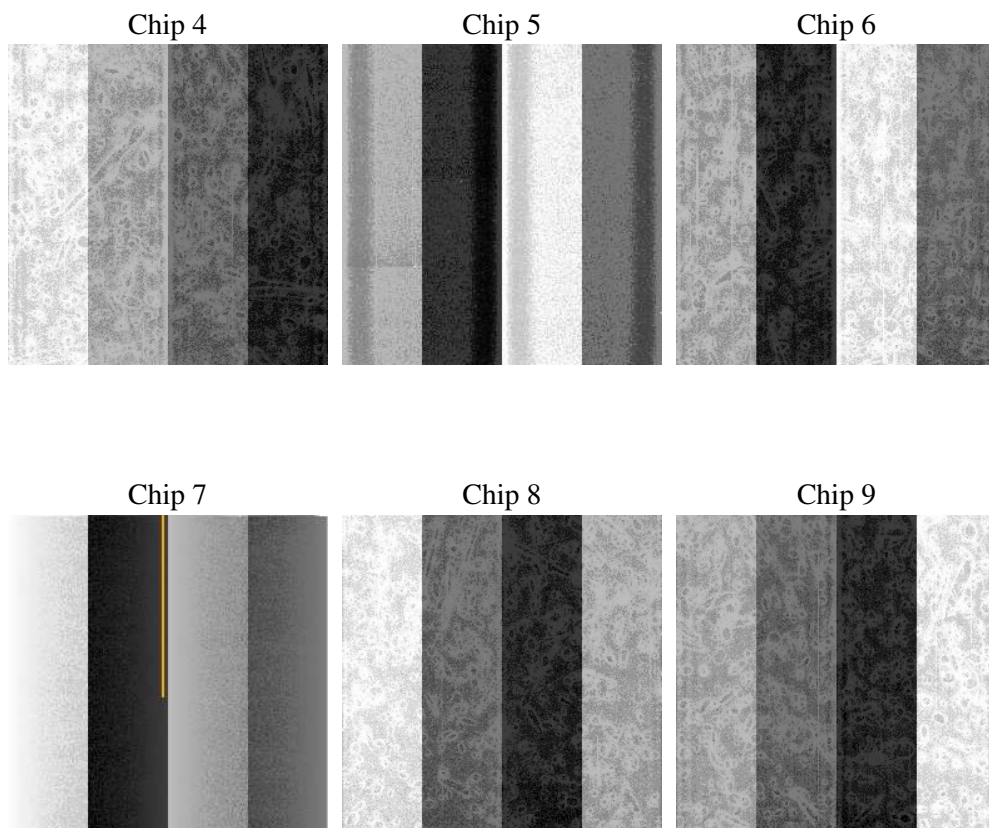
2 OBI

2.1 OBI

2.1.1 Images



2.1.2 Bias



2.1.3 Parameters

obi_num	0
ascdsver	7.6.10
caldsver	3.4.0
date	2007-05-27T12:00:47
revision	3

sched_exp_time	10000.000000
ontime	9780.2698366344
ontime4	710.70089301467
ontime5	9948.8000092655
ontime6	879.35801281035
ontime7	9780.2698366344
ontime8	1731.7922116667
ontime9	1728.5921618491
l1events	754119

2.1.4 Events

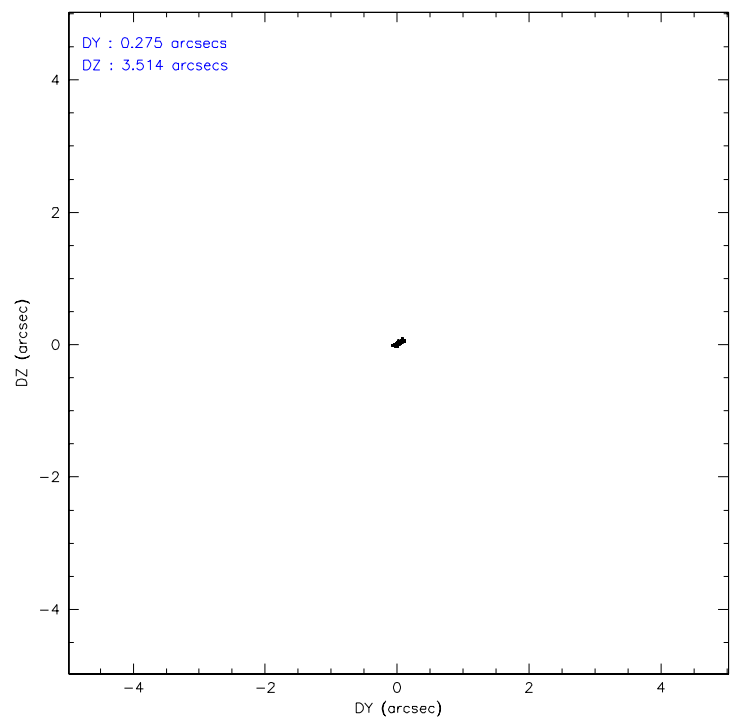
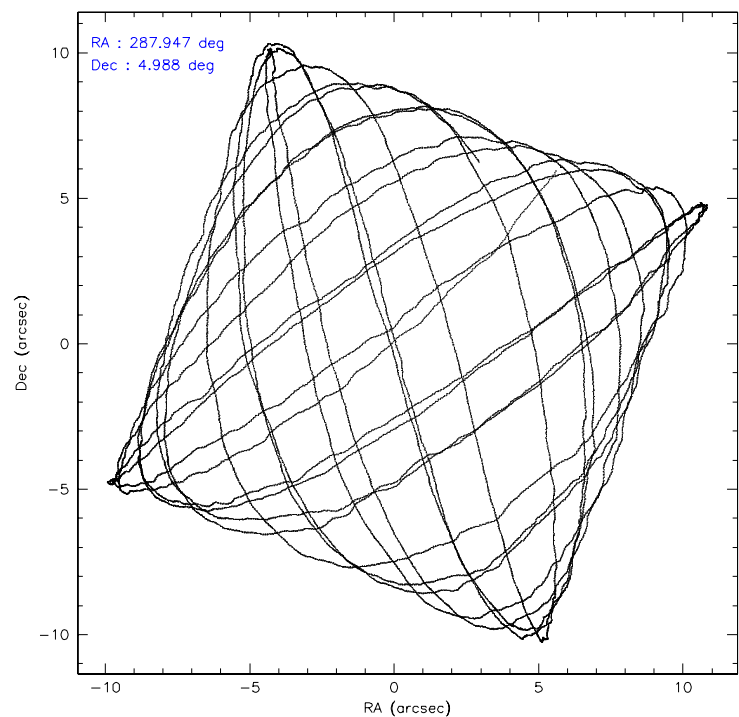
	ccd 4	ccd 5	ccd 6	ccd 7	ccd 8	ccd 9
level 1 events	278842	87650	277357	84968	14291	11011
rejected events	4737	44278	3558	44906	11006	9486
rejected %	1%	50%	1%	52%	77%	86%

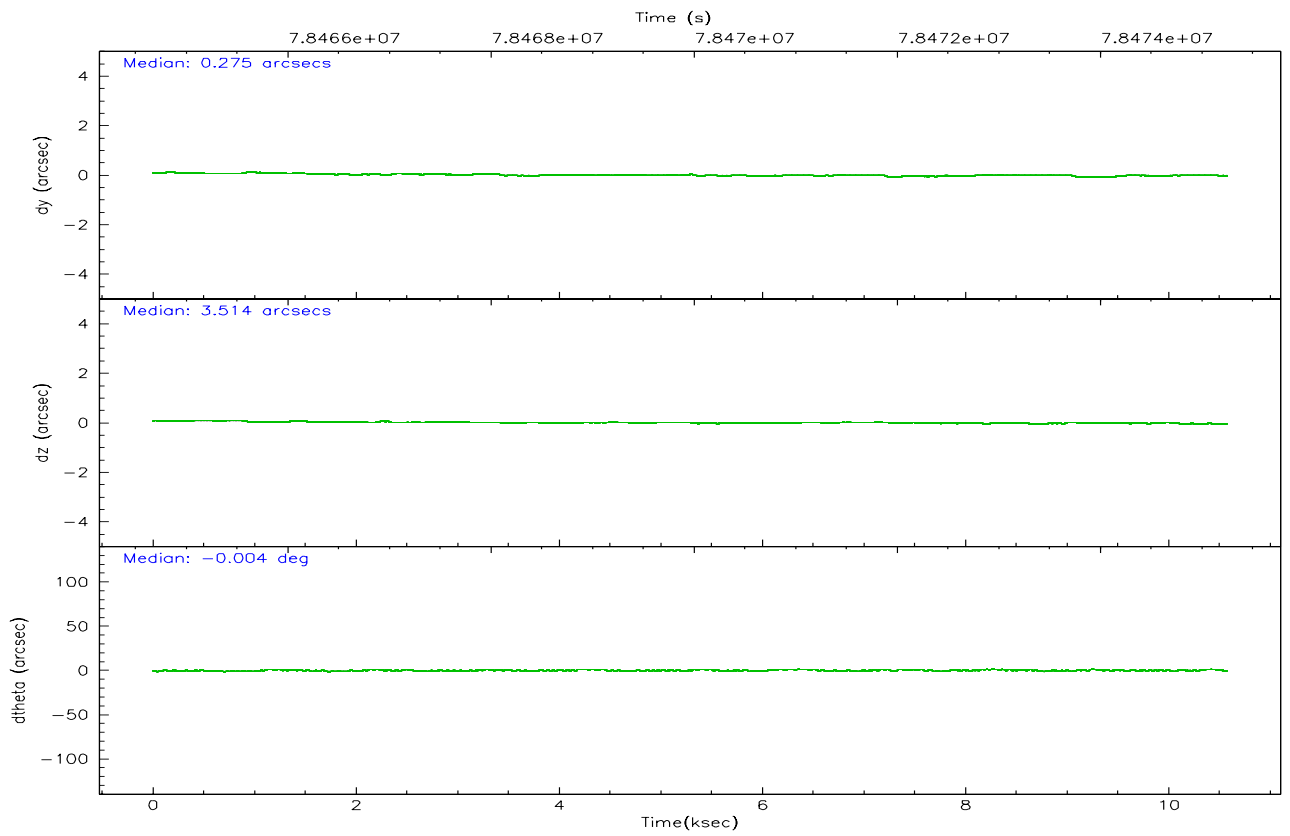
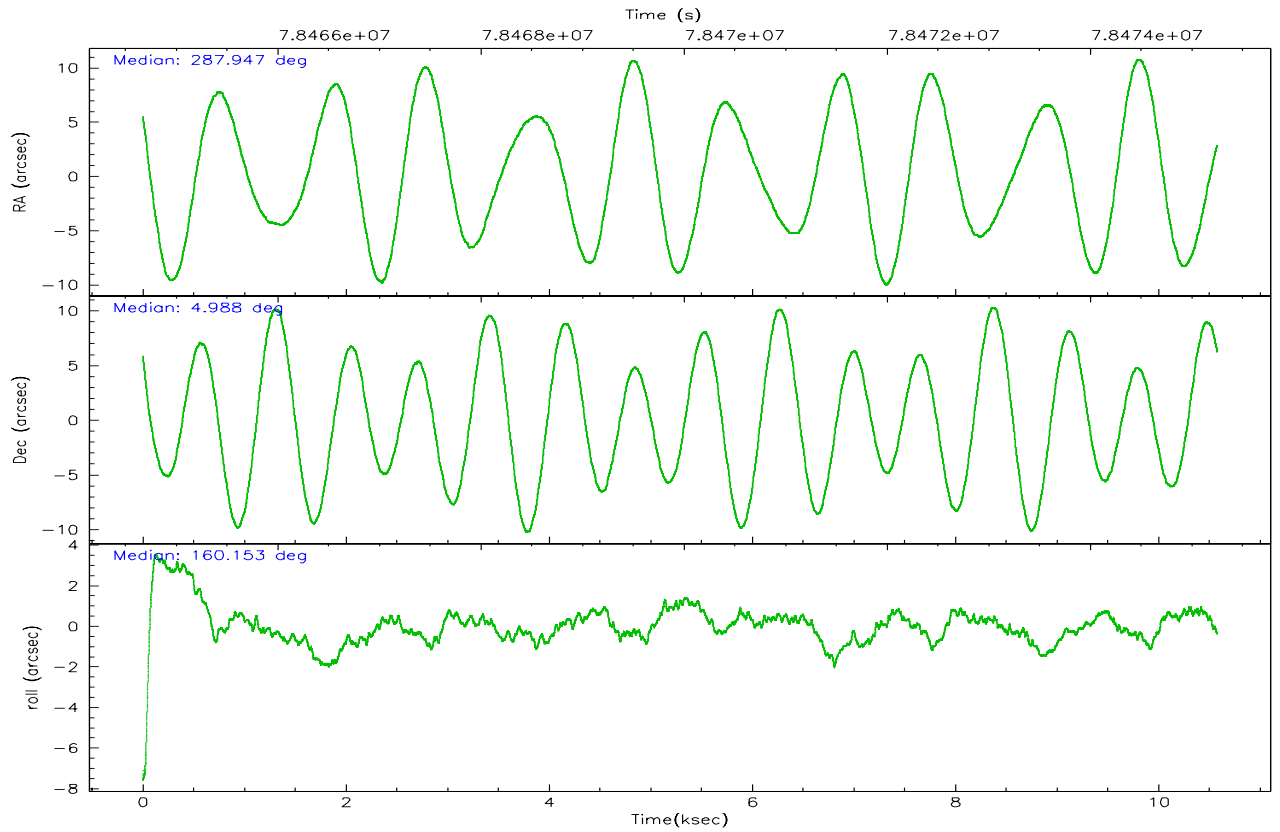
	ccd 4	ccd 5	ccd 6	ccd 7	ccd 8	ccd 9
grade 0 events	276022	7958	275309	5043	1117	707
	98%	9%	99%	5%	7%	6%
grade 1 events	538	311	399	151	10	6
	0%	0%	0%	0%	0%	0%
grade 2 events	153	11688	145	8319	581	289
	0%	13%	0%	9%	4%	2%
grade 3 events	157	1876	102	3868	418	132
	0%	2%	0%	4%	2%	1%
grade 4 events	96	1860	68	3787	397	128
	0%	2%	0%	4%	2%	1%
grade 5 events	275	6552	214	7545	506	408
	0%	7%	0%	8%	3%	3%
grade 6 events	100	20018	113	19065	789	271
	0%	22%	0%	22%	5%	2%
grade 7 events	1501	37387	1007	37190	10473	9070
	0%	42%	0%	43%	73%	82%

2.2 Compared Parameters

Parameter	Planned	Actual	Parameter	Planned	Actual
Instrument	ACIS	ACIS	Obspar format version number	6	6
Detector	ACIS-456789	ACIS-456789	Obspar file type	PREDICTED	ACTUAL
Grating	NONE	NONE	Obspar update status	NONE	UPDATED
Data mode	VFAINT	VFAINT	Number of optional ACIS chips dropped	0	0
Observation mode	POINTING	POINTING	On-chip summing requested	N	N
Pointing RA	287.974672	287.9475451249881	Subarray requested	NONE	NONE
Pointing Dec	4.992763	4.987830589739614	Alternating exposures requested	N	N
Pointing Roll	159.998397	160.157384871461	Primary exposure time	3.200000	3.2
SIM focus pos (mm)	-0.684267	-0.6828225247311905			
SIM defocus (mm)	0	0.001444936568705701			
SIM translation stage pos (mm)	-190.132523	-190.1400660498719			
SIM translation stage offset (mm)	0	0.00754346686406393			
Observation start time	78465248.184000	78464096.55248199			
Observation start date	2000-06-27T03:53:04	2000-06-27T03:34:56			
Observation end time	78475248.184000	78475640.615408			
Observation end date	2000-06-27T06:39:44	2000-06-27T06:47:20			
Read mode	TIMED	TIMED			

2.3 Aspect



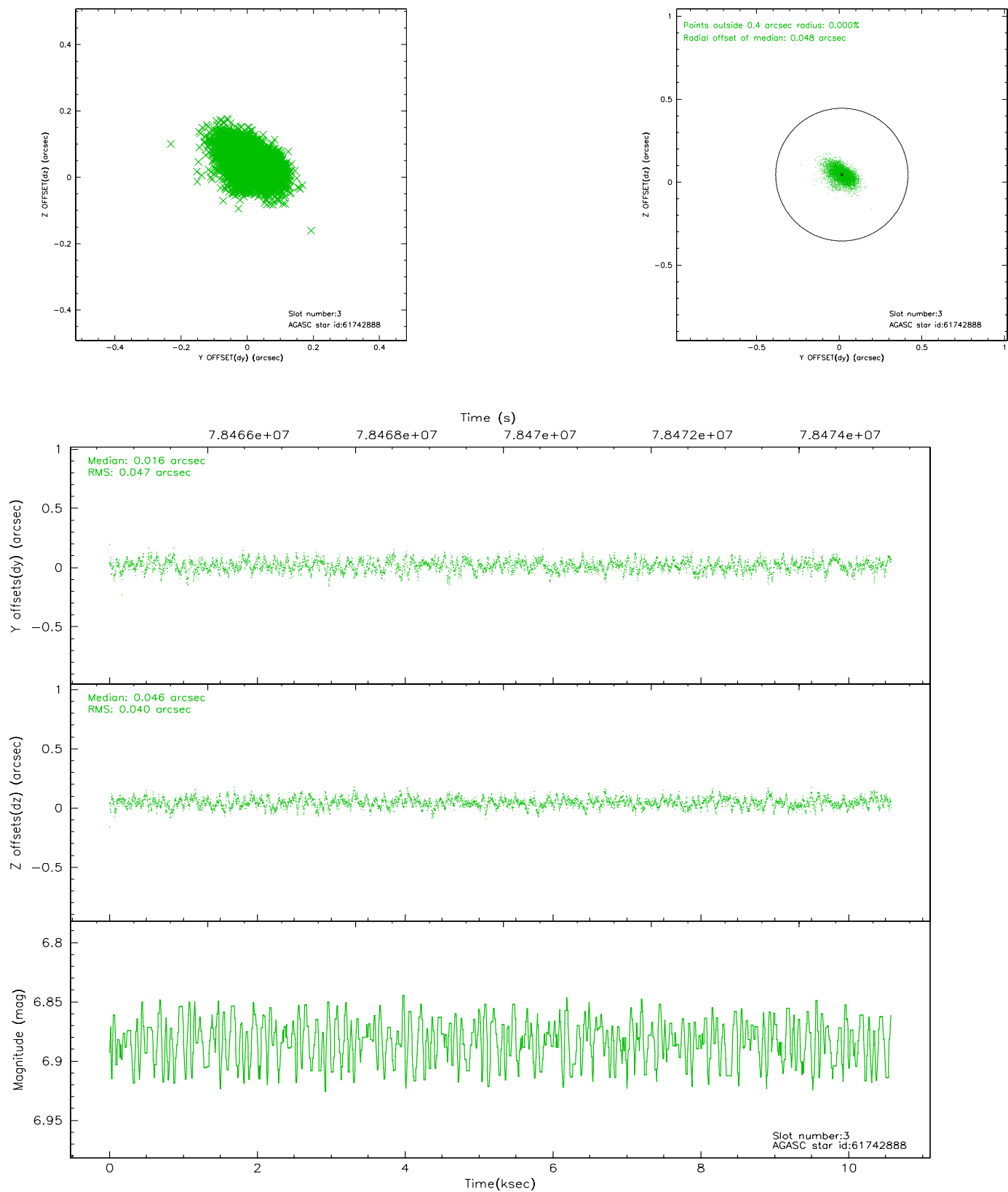


Slot Statistics

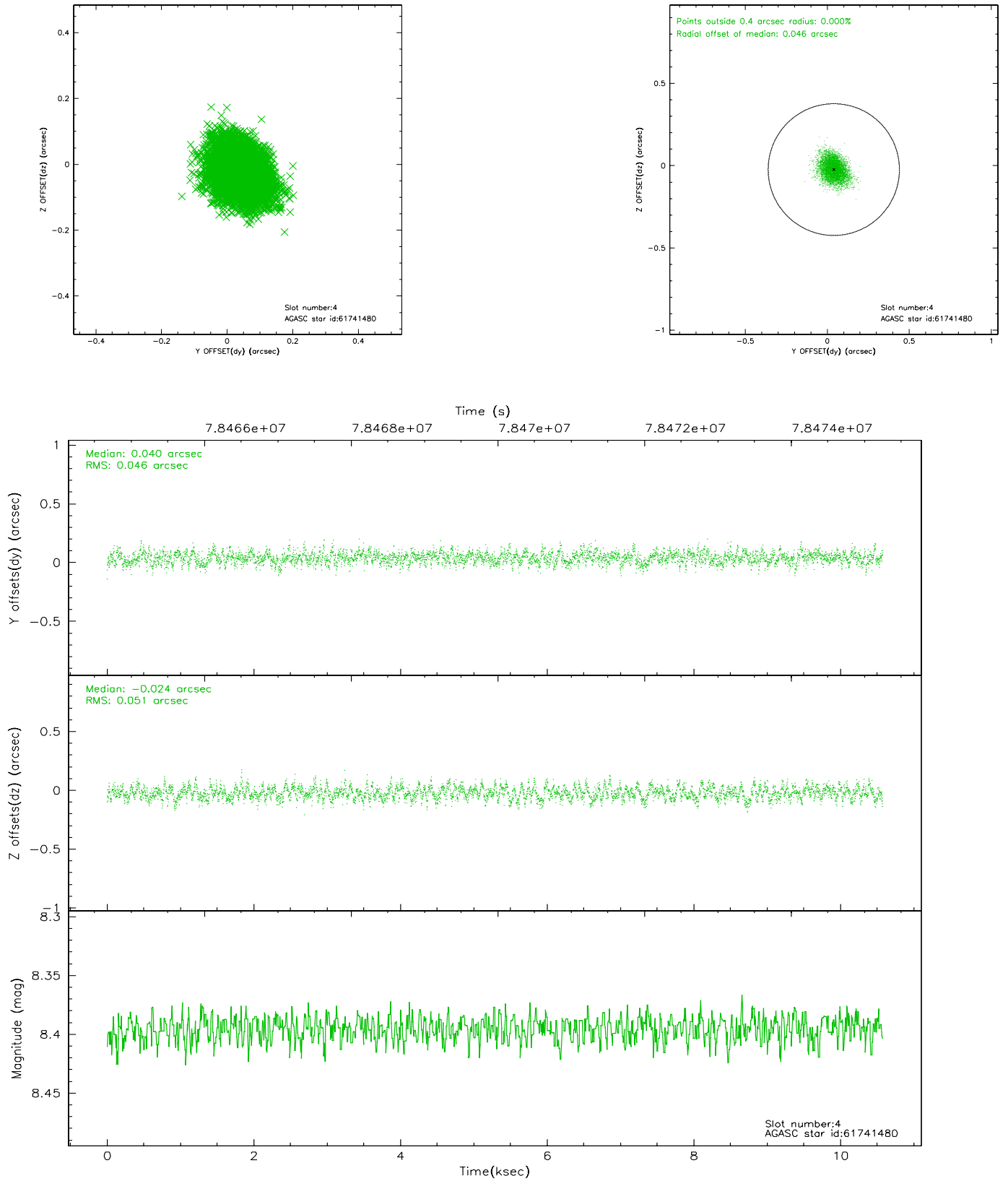
slot	status	id	mag	n_pts	med_dy	med_dz	dr1	dr2	ra	dec	mean_y	mean_z
0	FID	ACIS-S-1	7.18	2580	-0.005	0.047	0.009	0.015	0.000000	0.000000	943.13	-1720.20
1	FID	ACIS-S-5	7.24	2580	-0.026	0.012	0.007	0.012	0.000000	0.000000	-1805.55	176.90
2	FID	ACIS-S-6	7.36	2580	0.009	-0.046	0.008	0.013	0.000000	0.000000	408.24	821.29
3	GUIDE	61742888	6.88	5160	0.016	0.046	0.065	0.109	288.433450	5.515613	-900.96	-2331.63
4	GUIDE	61741480	8.39	5160	0.040	-0.024	0.073	0.119	287.973237	4.806511	-225.03	631.34
5	GUIDE	61747728	9.10	5158	0.036	-0.044	0.074	0.123	288.191054	4.754353	-1023.39	540.86
6	GUIDE	61738096	9.45	5152	0.034	0.019	0.083	0.138	287.831592	4.762953	198.81	953.09
7	GUIDE	61752640	9.52	5158	-0.123	0.003	0.094	0.155	287.386963	5.148676	2172.00	192.83

2.4 Star Slots

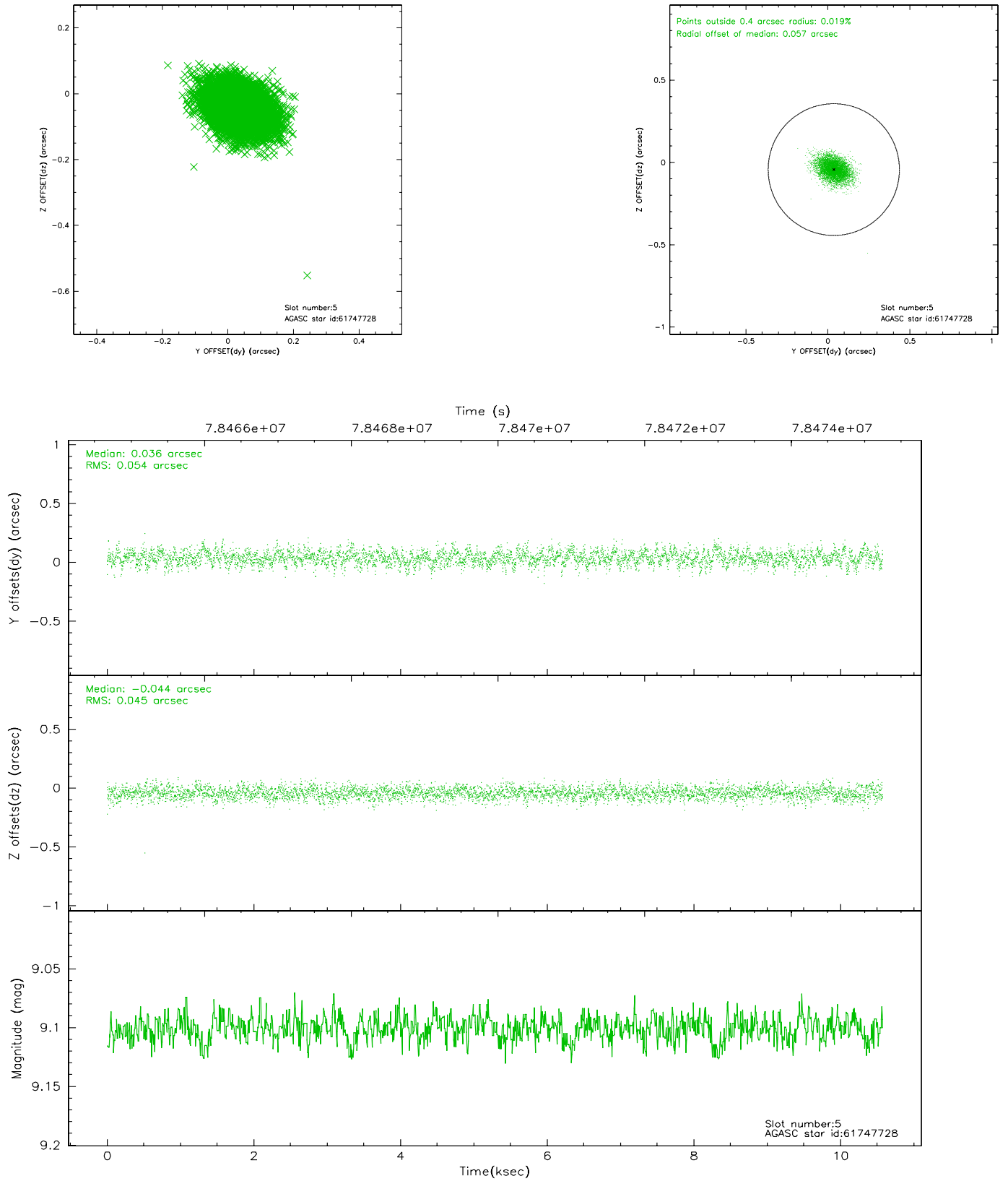
2.4.1 Slot 3



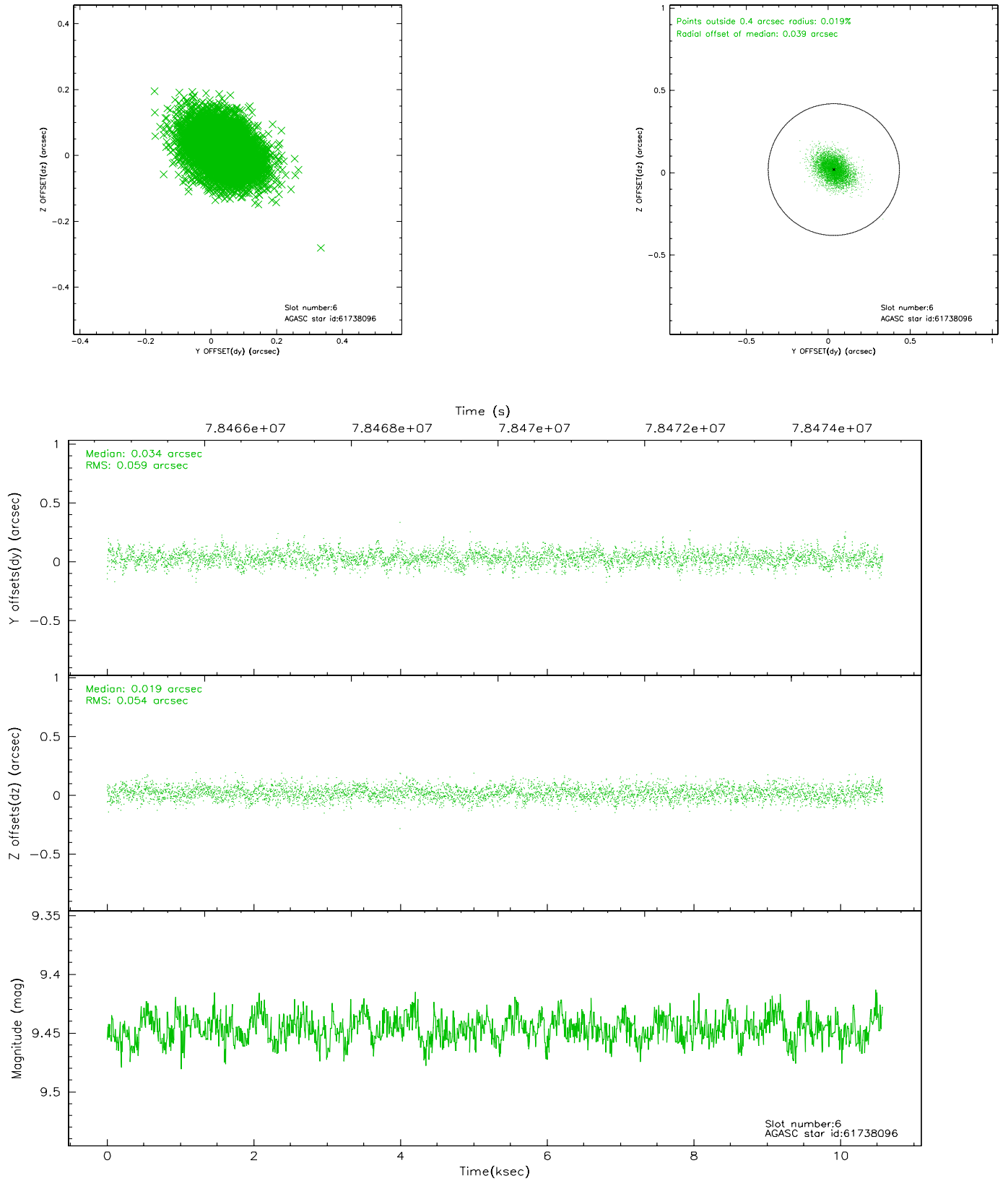
2.4.2 Slot 4



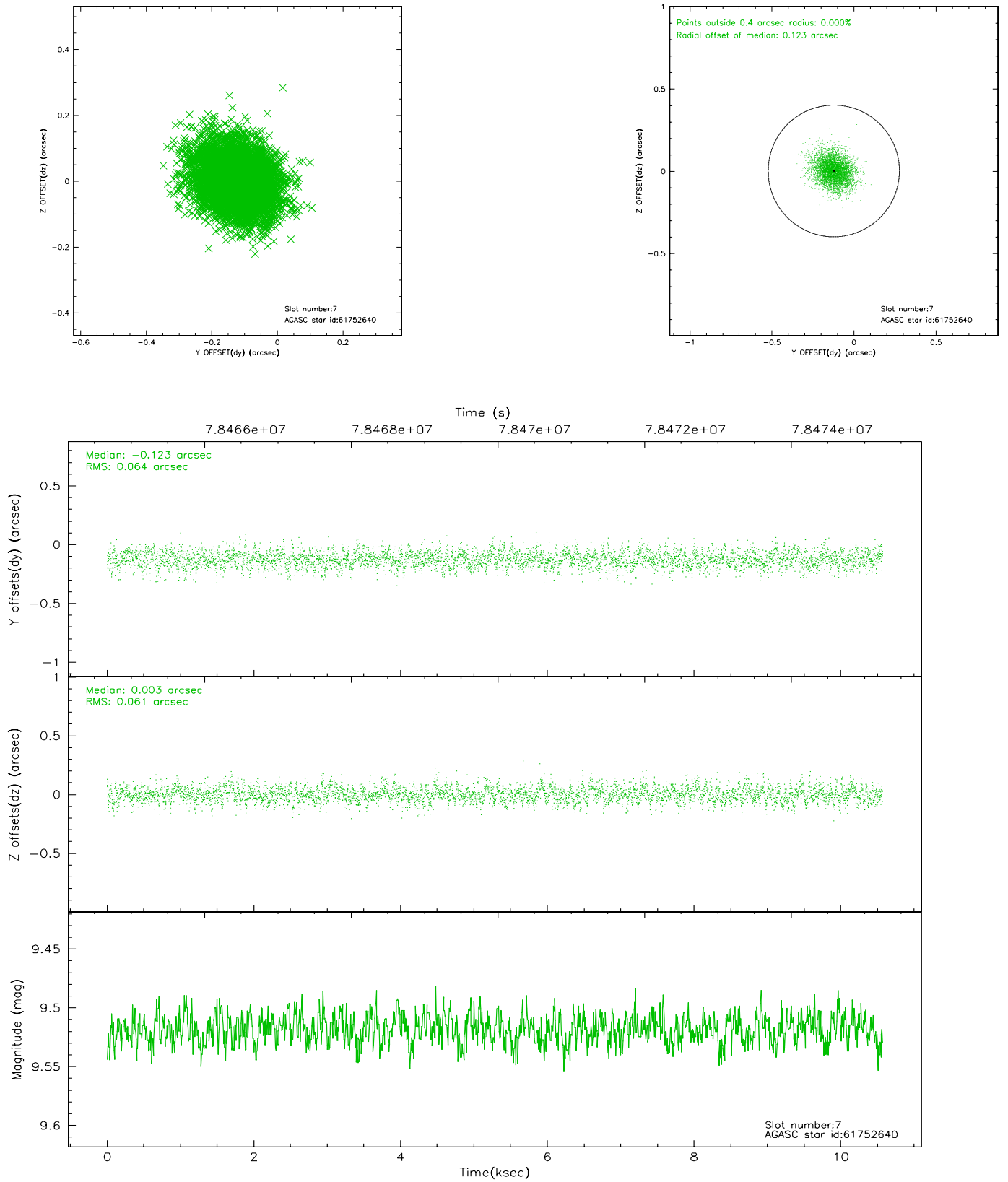
2.4.3 Slot 5



2.4.4 Slot 6

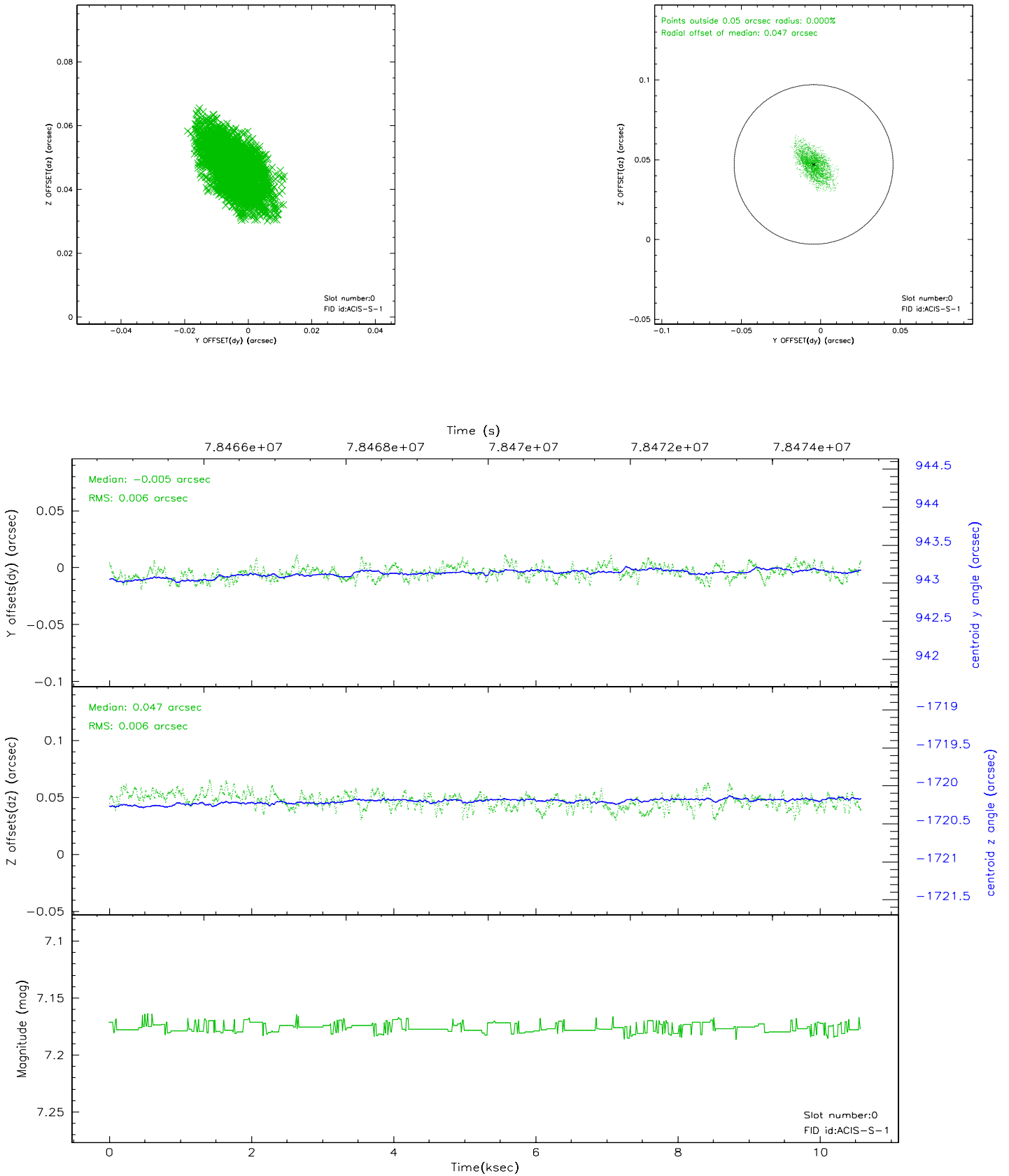


2.4.5 Slot 7

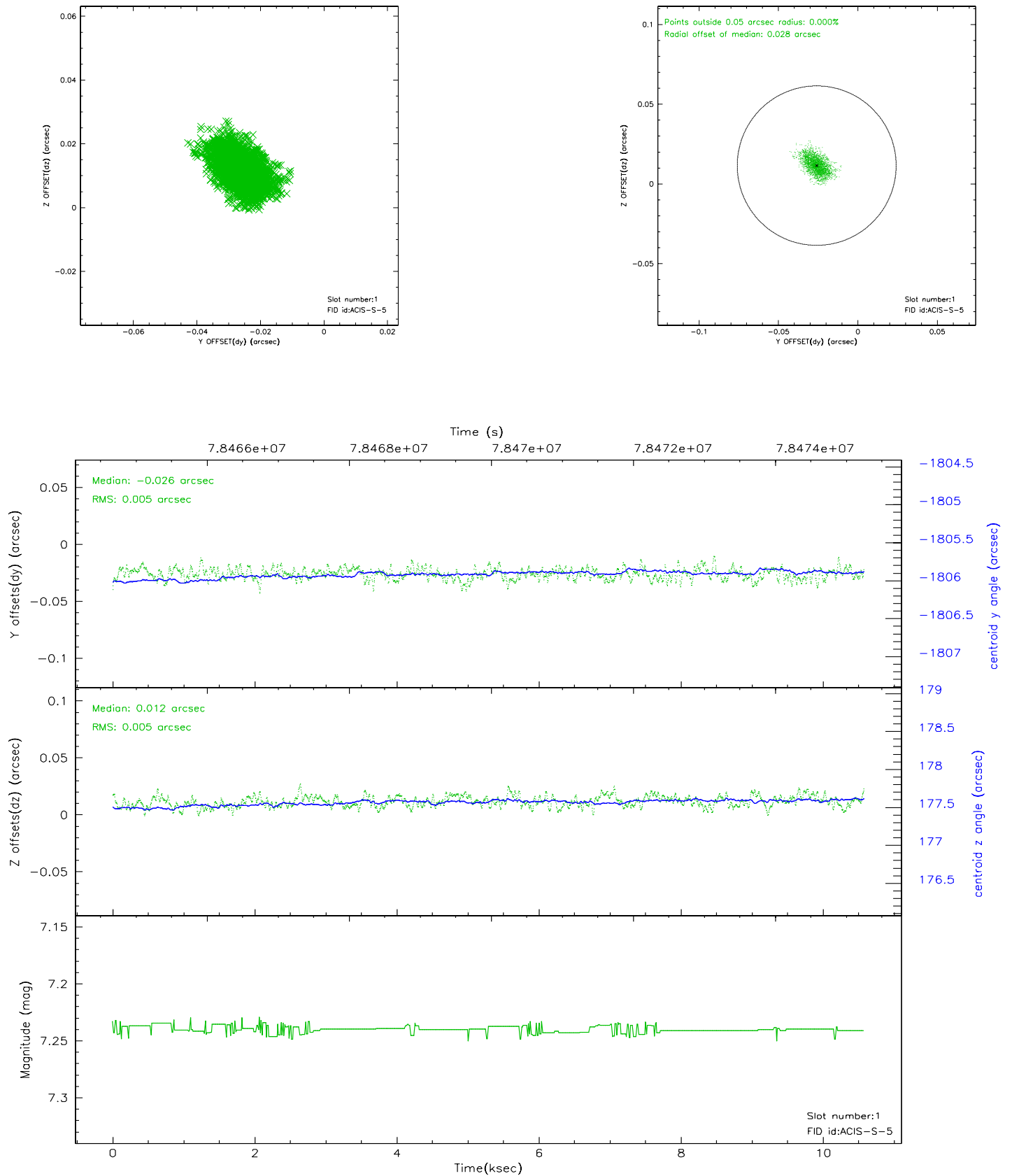


2.5 FID Slots

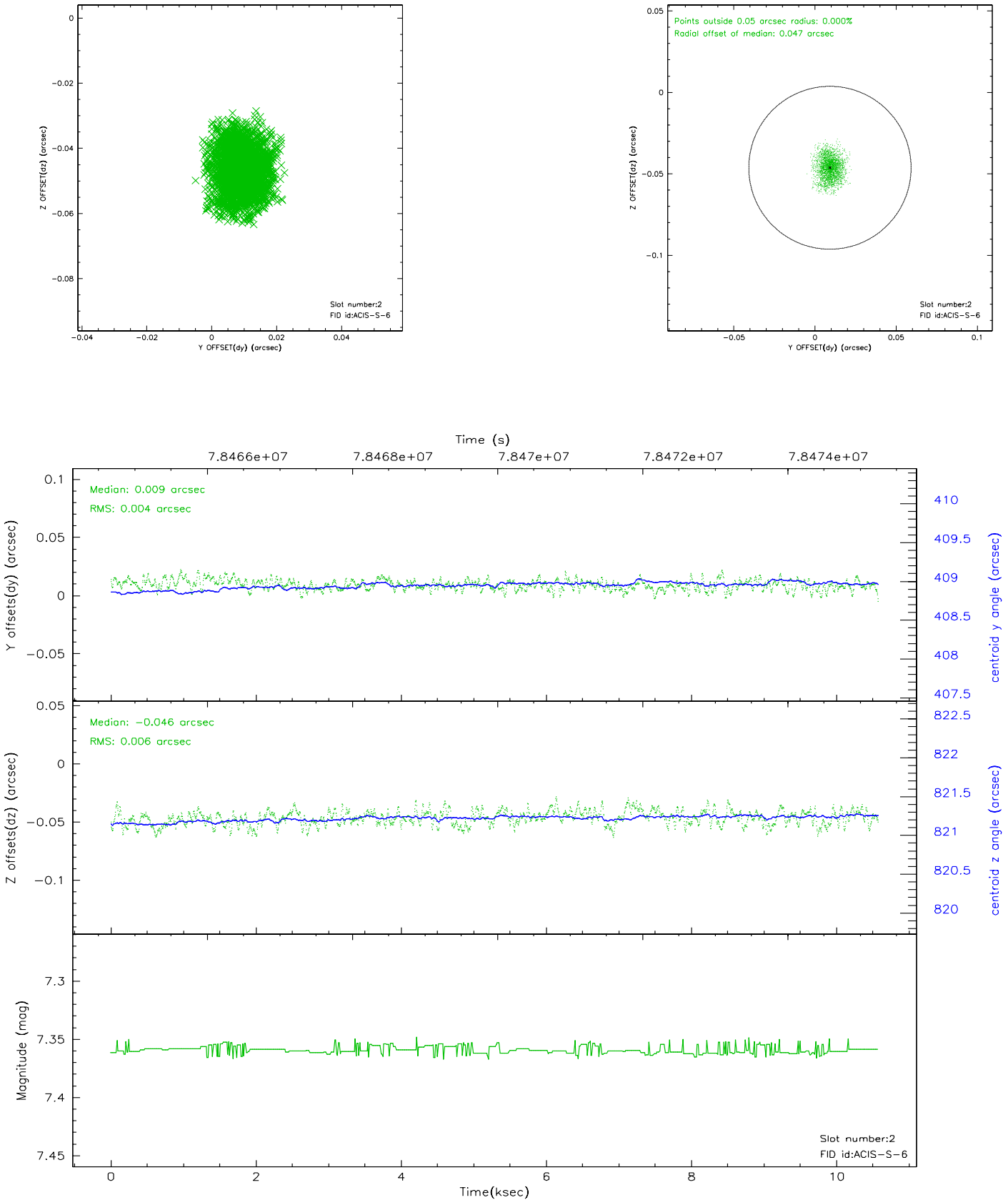
2.5.1 Slot 0



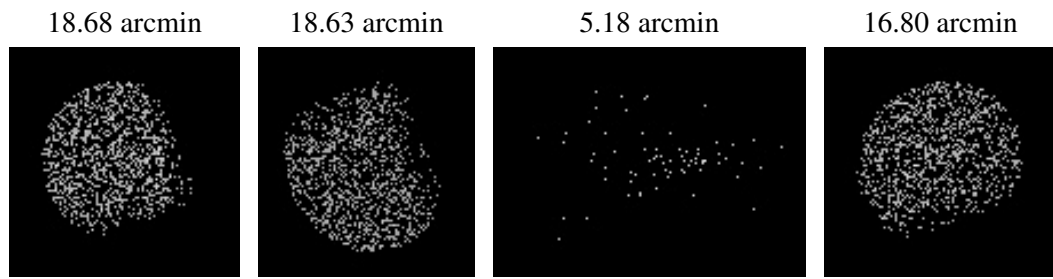
2.5.2 Slot 1



2.5.3 Slot 2



3 Point Sources



A Summary

A.1 Status

V&V Scientist	Jen Lauer
V&V Date (YYYY-MM-DD)	2007.05.27
V&V Edition	1
V&V Disposition and Status	OK
V&V Charge Time	9.785

A.2 Comments

Threshold-plane latchup did not impact the target on S3 (CCD_ID = 7).
On times for chips 4, 6, 8, and 9 are reduced because of the T-plane
latchup.

Roll constraint met.