

V&V Reference Report

L2 ASCDS Version : 8.4.3.1

Observation 6469 - L2 Version 3
Chandra X-Ray Center

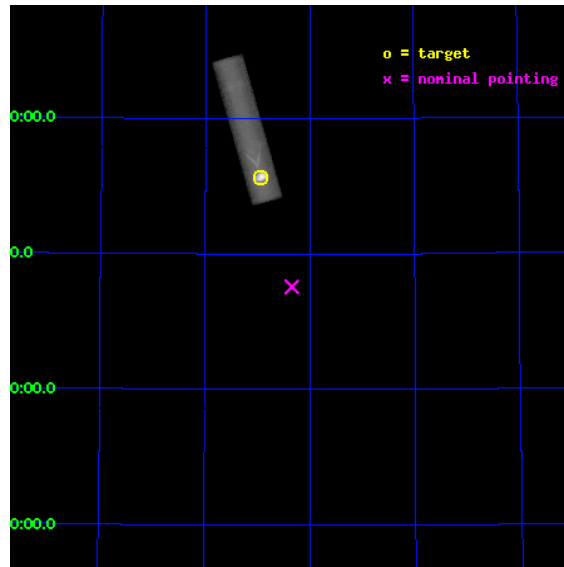
L2 Processing Date : Aug 11 2012

Contents

1	Front	2
2	OBI	3
2.1	OBI	3
2.1.1	Images	3
2.1.2	Parameters	4
2.1.3	Events	4
2.2	Compared Parameters	5
2.3	Aspect	6
2.4	Star Slots	9
2.4.1	Slot 3	9
2.4.2	Slot 4	10
2.4.3	Slot 5	11
2.4.4	Slot 6	12
2.4.5	Slot 7	13
2.5	FID Slots	14
2.5.1	Slot 0	14
2.5.2	Slot 1	15
2.5.3	Slot 2	16
A	Summary	17
A.1	Status	17
A.2	Comments	17

1 Front

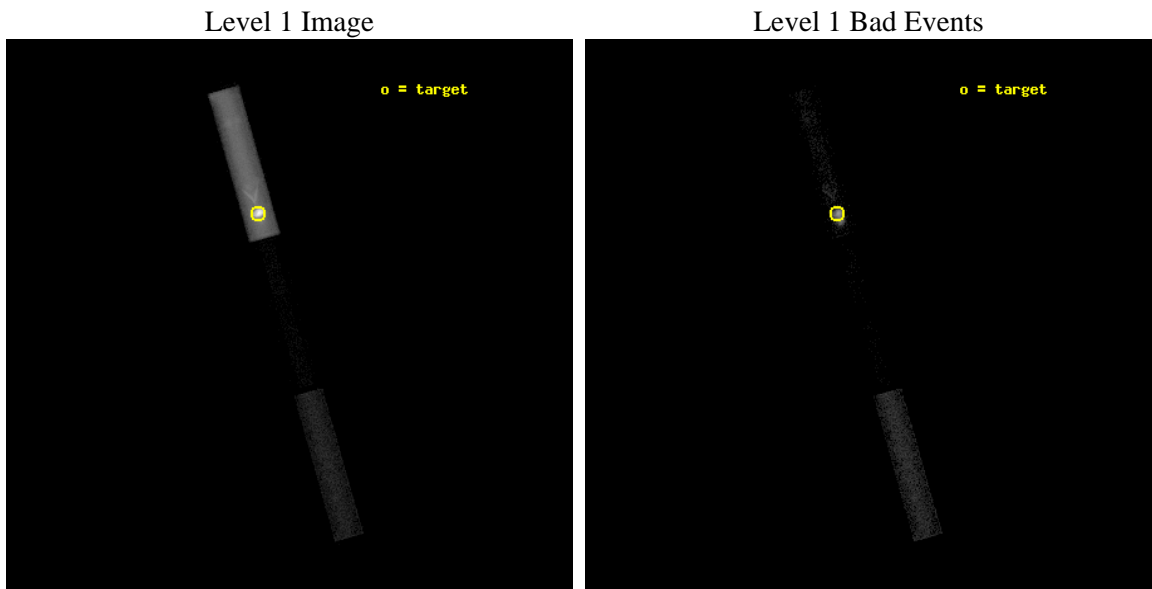
seq_num	290562	Sequence number
obs_id	6469	Observation id
title	AO7 Measurements of the optical/UV Transmission of the HRC and ACIS Filters.	Proposal title
observer	Dr. CXC Calibration	Principal investigator
object	Vega	Source name
ra_targ	279.235	Observer's specified target RA [deg]
dec_targ	38.783778	Observer's specified target Dec [deg]
ra_nom	279.08545637467	Nominal RA [deg]
dec_nom	38.378978346521	Nominal Dec [deg]
roll_nom	254.0403675541	Nominal Roll [deg]
revision	3	Processing version of data
ontime	2180.4313525558	[s]
livetime	531.95387866625	Ontime multiplied by DTCOR
l2events	385495	Number of level 2 events



2 OBI

2.1 OBI

2.1.1 Images



2.1.2 Parameters

obi_num	0	Obi number	sched_exp_time	2000.000000	[s] Scheduled observation exposure time
ascdsver	8.4.5	Processing system revision	ontime	2180.4313525558	[s]
caldbver	4.5.1.1	 	l1events	460061	Number of level 1 events
date	2012-08-11T11:15:27	Date and time of file creation			
revision	3	Processing version of data			

2.1.3 Events

Level 1 Events

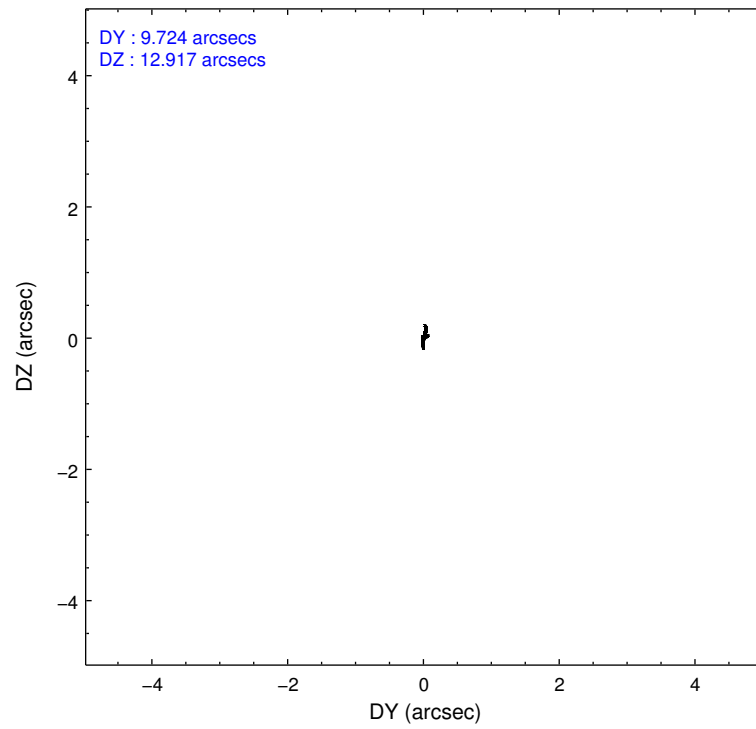
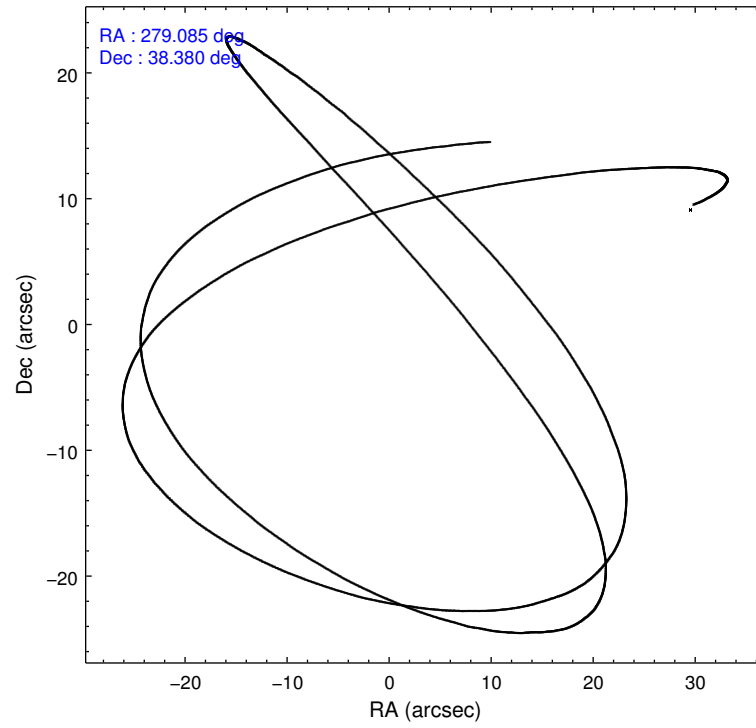
	segment 1	segment 2	segment 3
level 1 events	448206	568	11287
rejected events	46181	545	11287
rejected %	10%	95%	100%

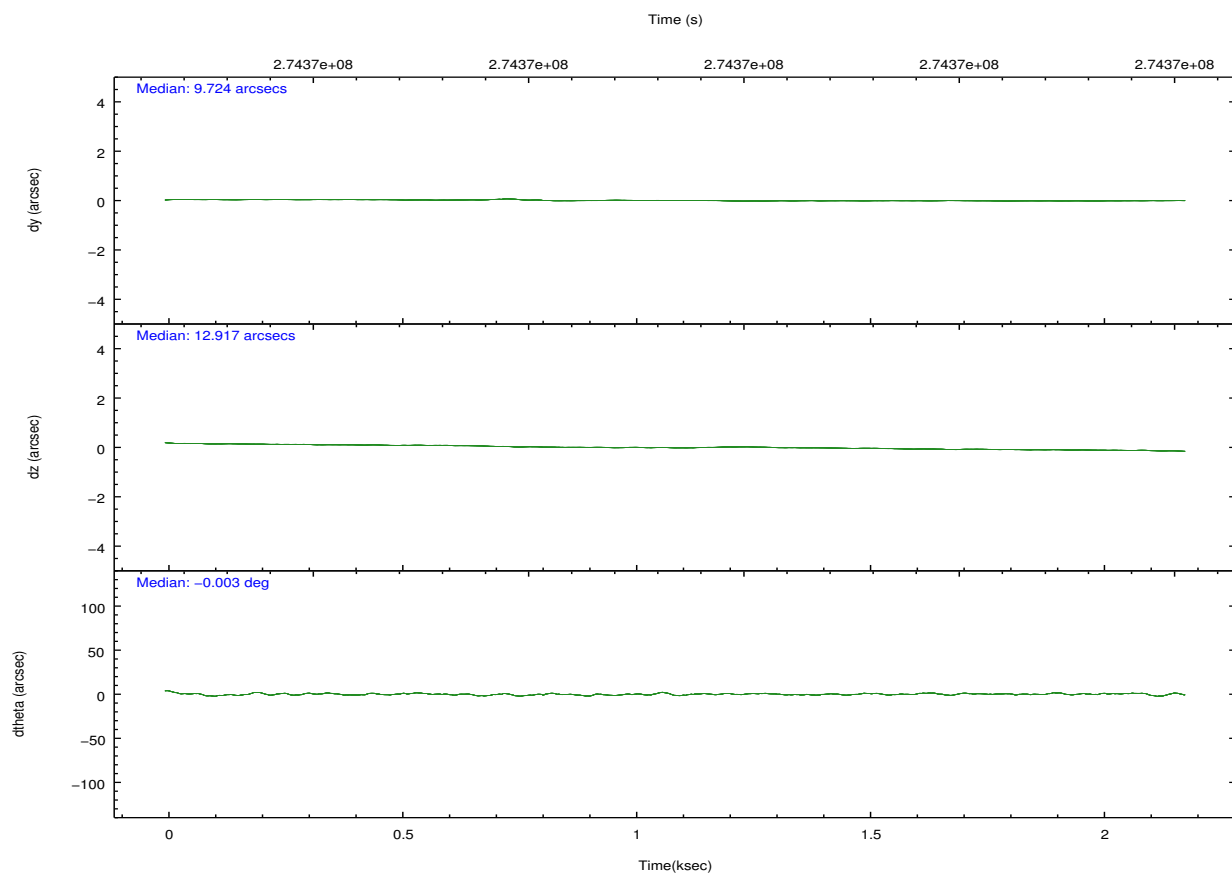
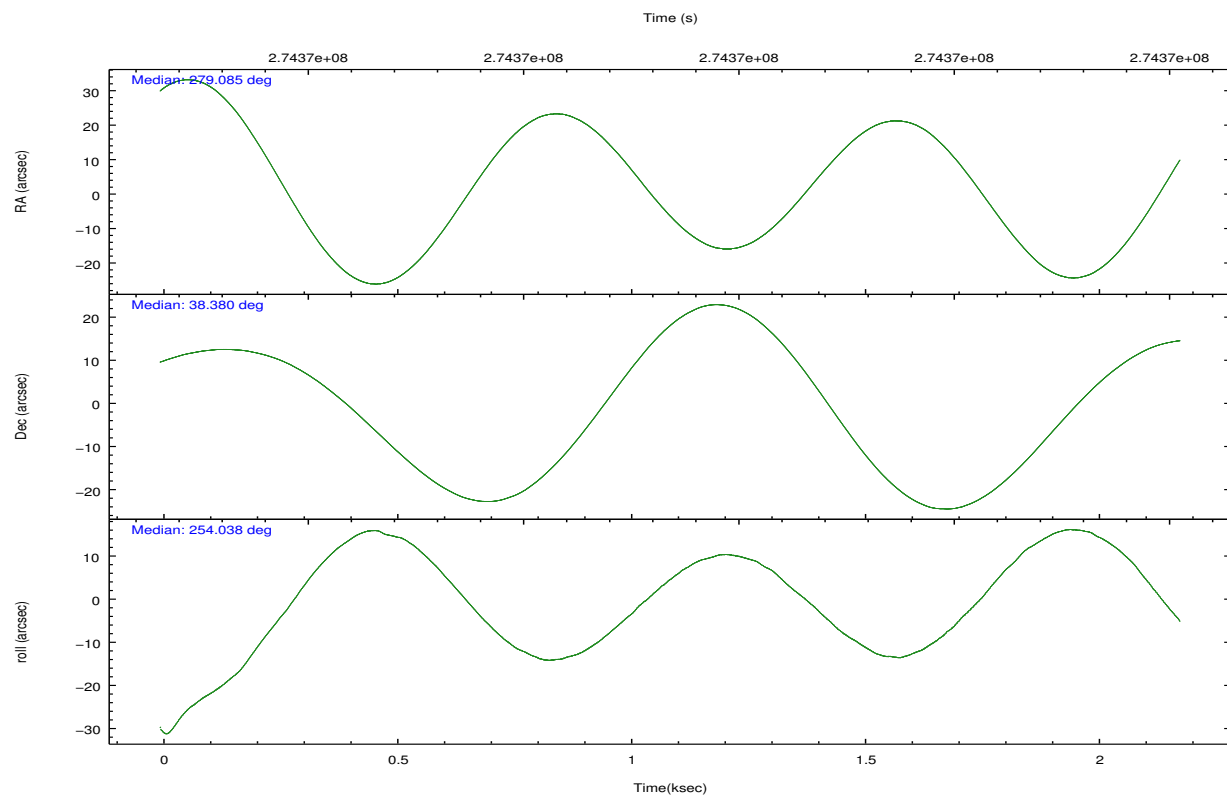
2.2 Compared Parameters

Parameter	Planned	Actual
Instrument	HRC	HRC
Detector	HRC-S	HRC-S
Grating	NONE	NONE
Data mode	OBSERVING	OBSERVING
Observation mode	POINTING	POINTING
[deg] Pointing RA	279.075013	279.0854563746747
[deg] Pointing Dec	38.406303	38.3789783465207
[deg] Pointing Roll	253.979518	254.0403675540998
[s] Window start time (MET)	270777665.184000	270777665.184000
[s] Window stop time (MET)	275961665.184000	275961665.184000
[mm] SIM focus pos	-1.533336	-1.526339935833849
[mm] SIM defocus	7.710433287538843e-07	0.006996703570447904
[mm] SIM translation stage pos	250.455976	250.466033080201
[mm] SIM translation stage offset	0	-0.01005468664627074
[s] Observation start time (MET)	274366924.184000	274366547.76307
Observation start date	2006-09-11T13:00:59	2006-09-11T12:55:47
[s] Observation end time (MET)	274368924.184000	274369057.98819
Observation end date	2006-09-11T13:34:19	2006-09-11T13:37:37

Parameter	Planned	Actual
Obspar format version number	7	7
Obspar file type	PREDICTED	ACTUAL
Obspar update status	NONE	UPDATED

2.3 Aspect



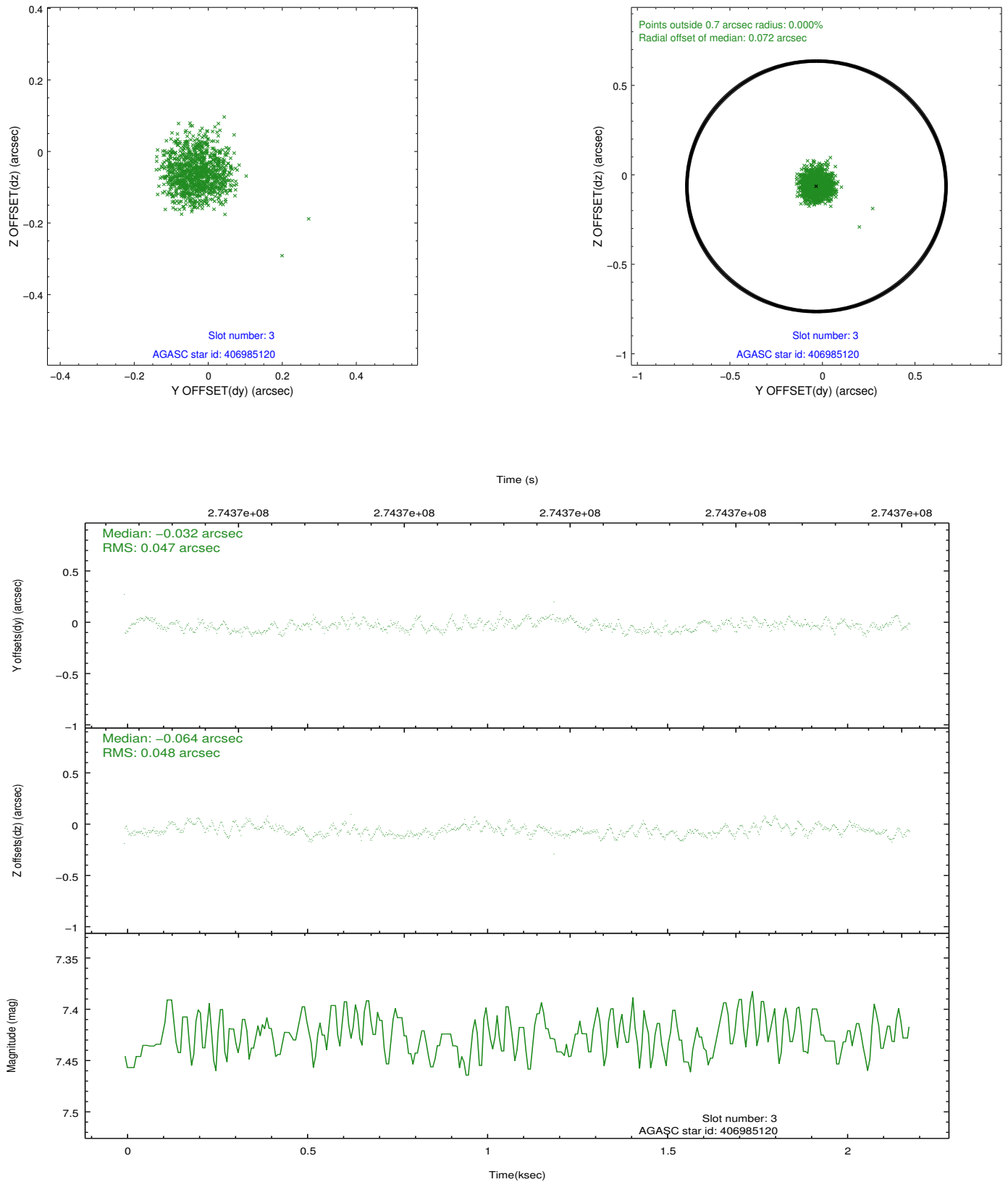


Slot Statistics

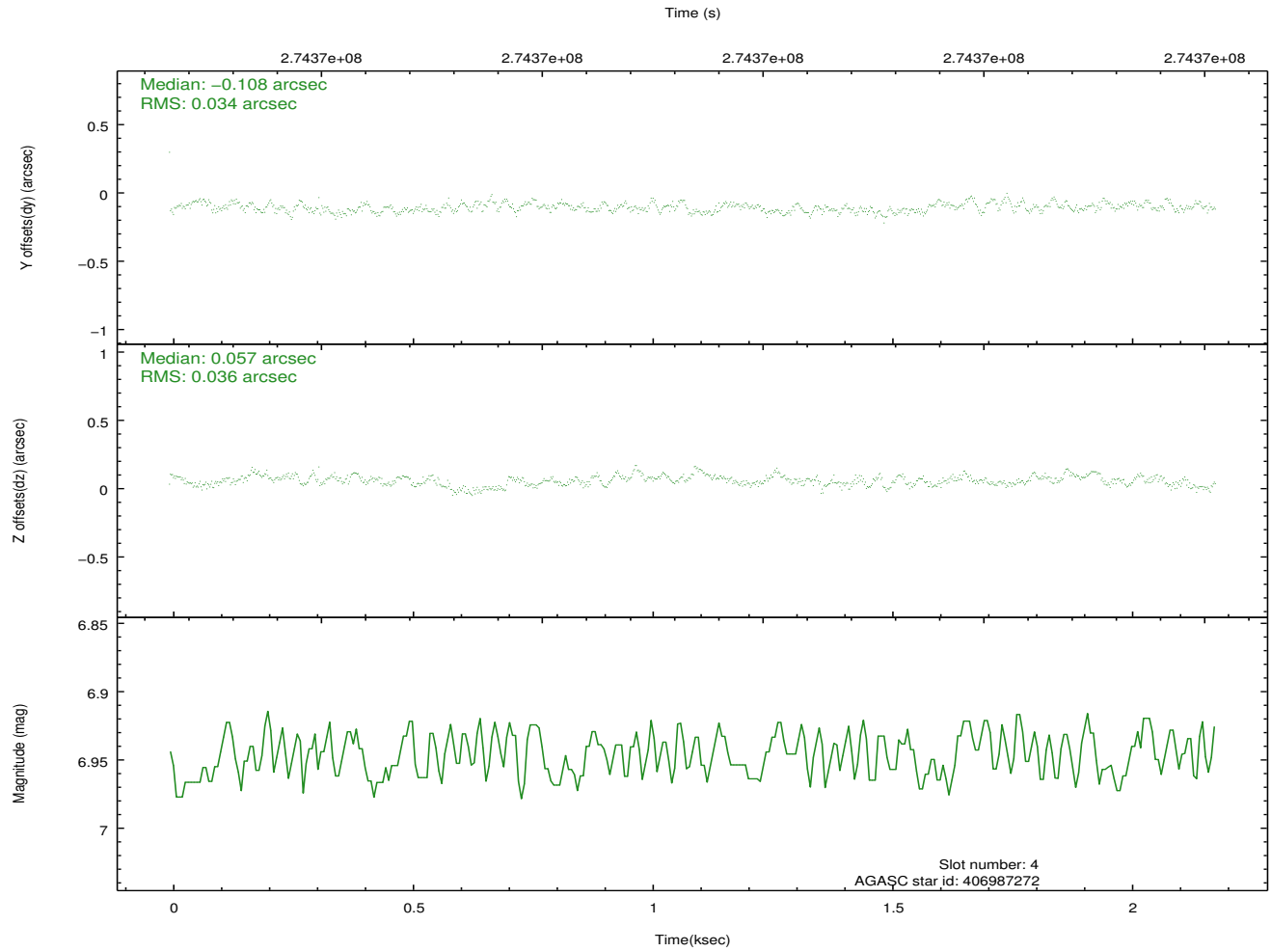
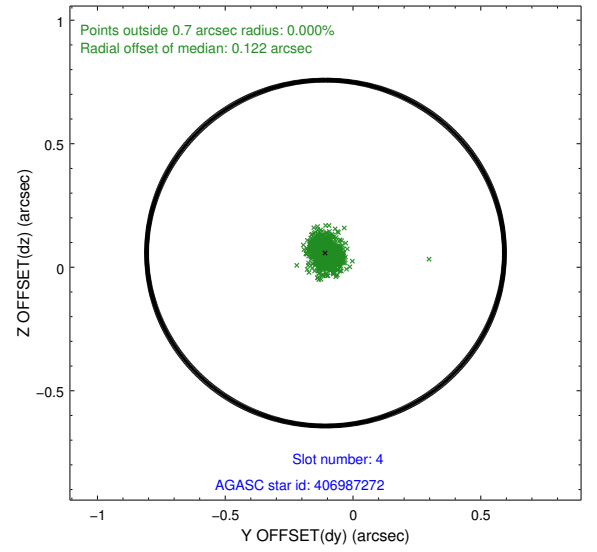
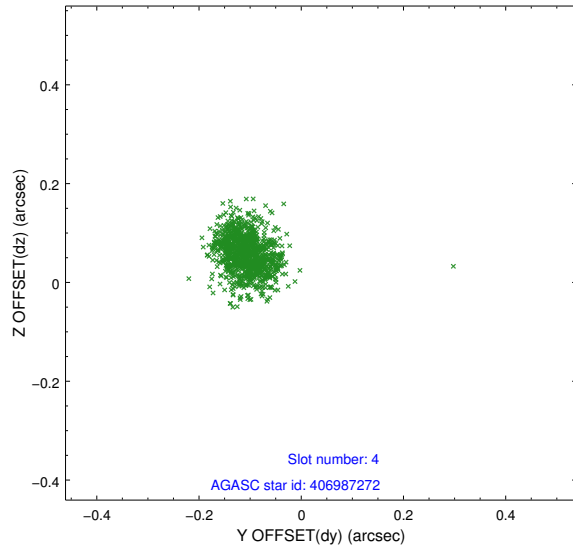
slot	status	id	mag	n_pts	med_dy	med_dz	dr1	dr2	ra	dec	mean_y	mean_z
0	FID	HRC-S-1	7.04	531	0.108	-0.157	0.010	0.017	0.000000	0.000000	-1163.96	-461.69
1	FID	HRC-S-3	7.05	532	0.070	-0.050	0.009	0.016	0.000000	0.000000	-1168.90	567.07
2	FID	HRC-S-4	7.01	532	0.210	-0.091	0.005	0.011	0.000000	0.000000	1232.19	571.52
3	GUIDE	406985120	7.43	1064	-0.032	-0.064	0.073	0.109	278.839732	38.894839	-1508.82	-1118.68
4	GUIDE	406987272	6.95	1065	-0.108	0.057	0.052	0.084	278.536588	38.437504	305.55	-1492.06
5	GUIDE	406987384	8.96	1064	0.044	0.103	0.071	0.117	278.815518	38.115336	1209.53	-418.17
6	GUIDE	406989616	8.23	1065	0.034	-0.052	0.078	0.119	279.202881	38.520843	-494.30	232.55
7	GUIDE	406993992	7.63	1064	0.057	-0.046	0.063	0.101	279.053714	38.034587	1302.98	312.54

2.4 Star Slots

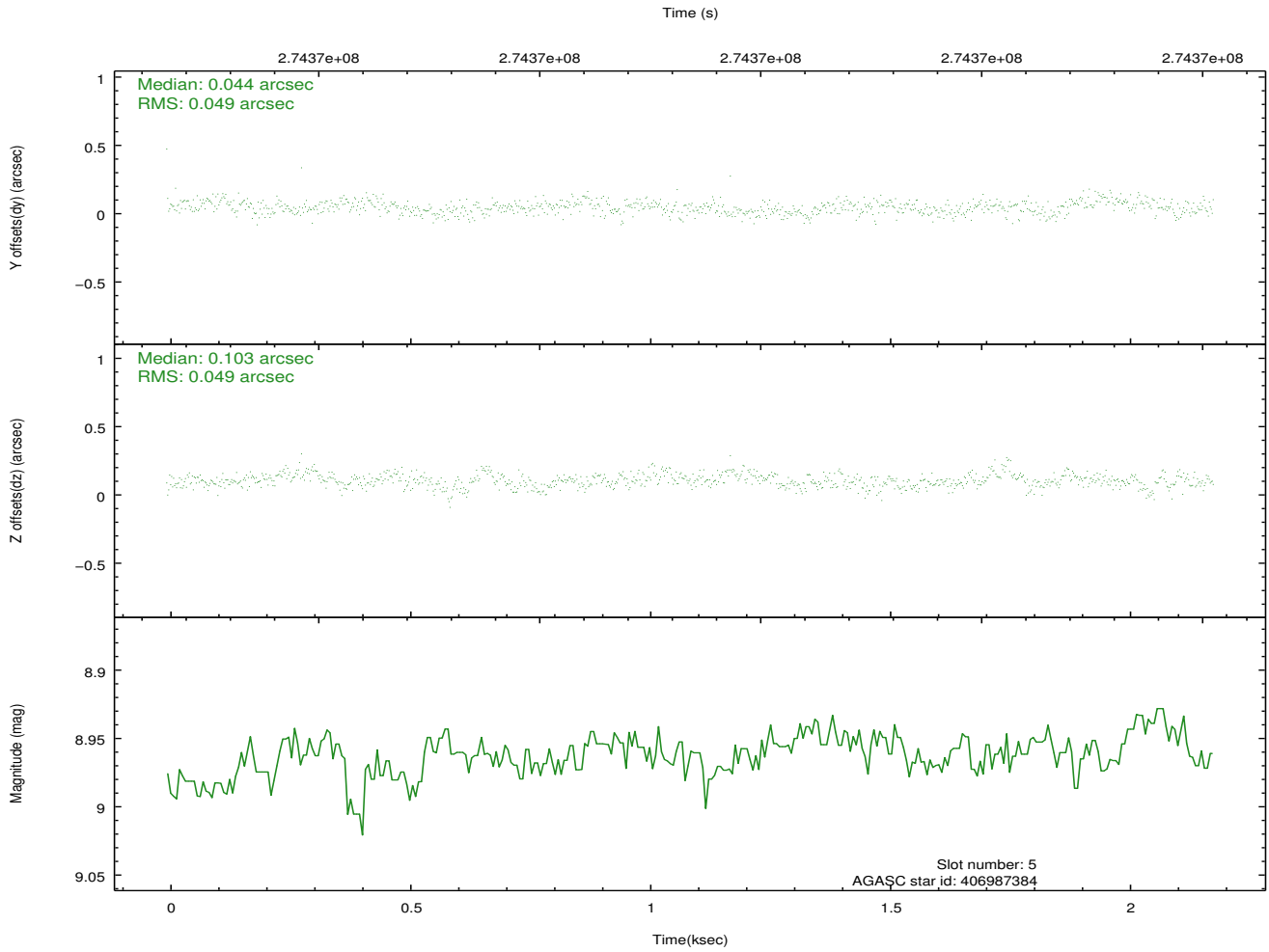
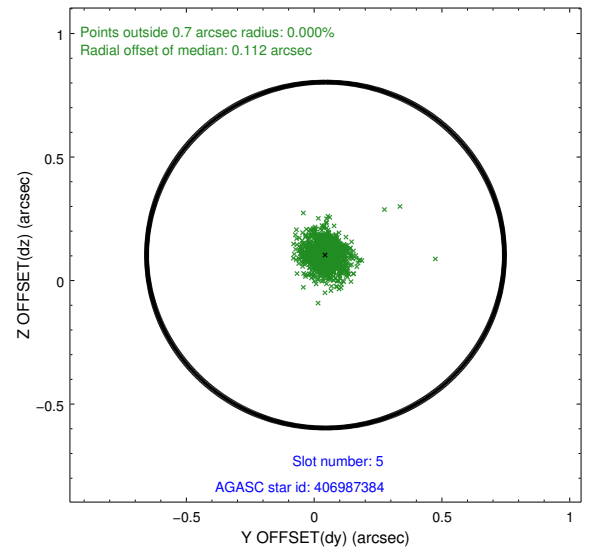
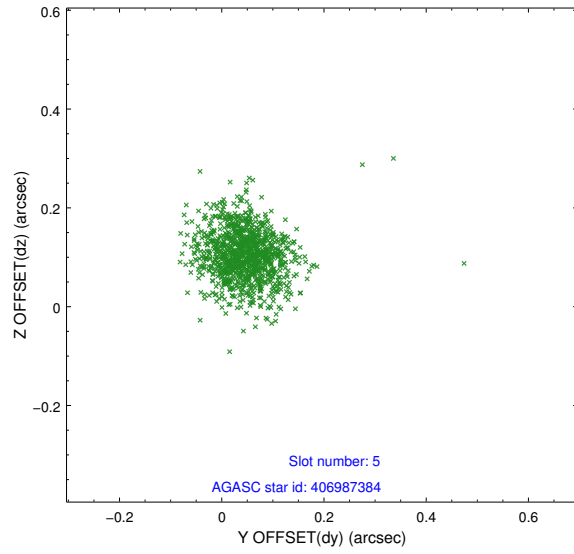
2.4.1 Slot 3



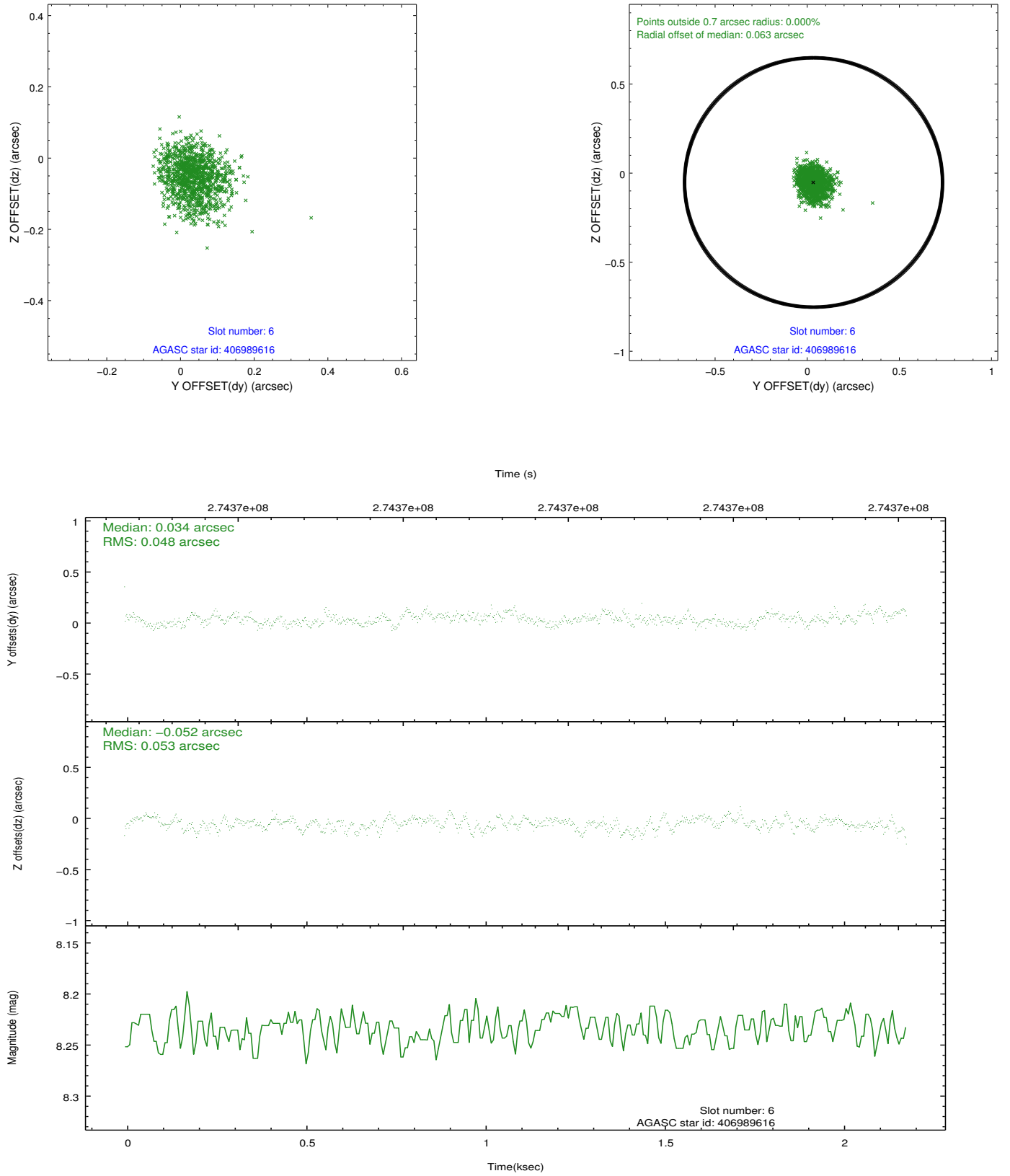
2.4.2 Slot 4



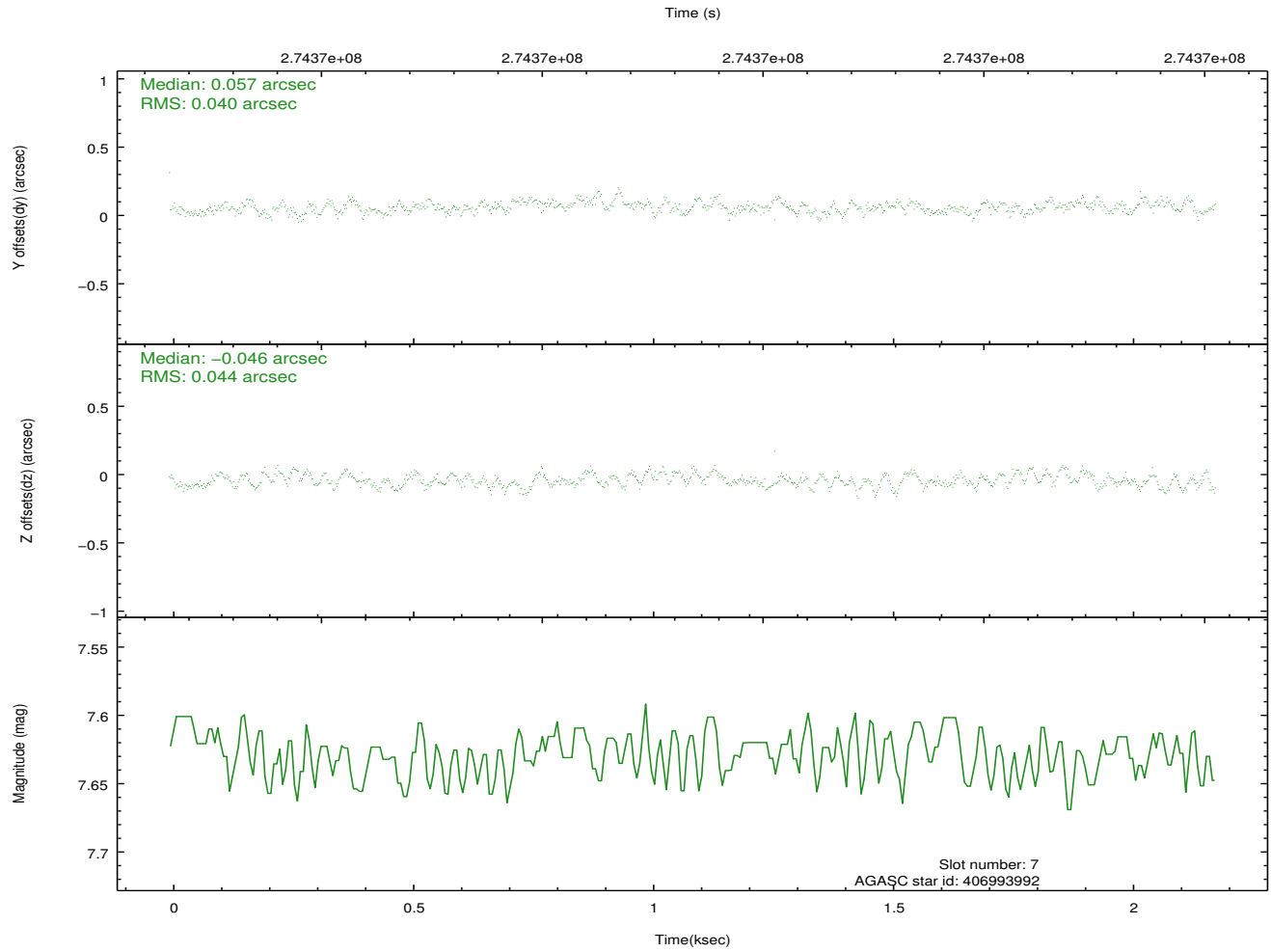
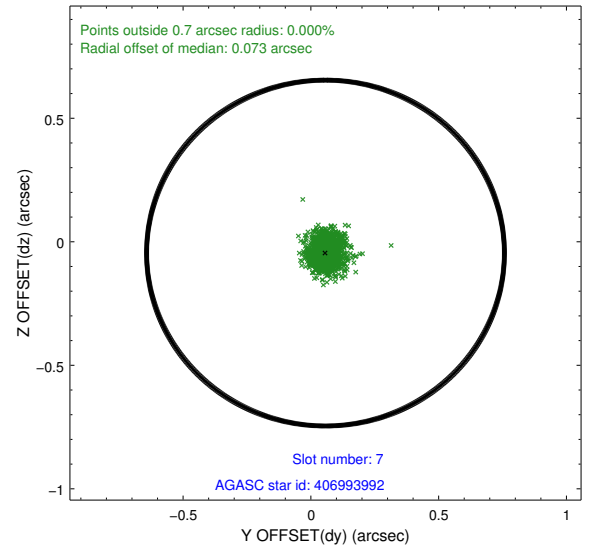
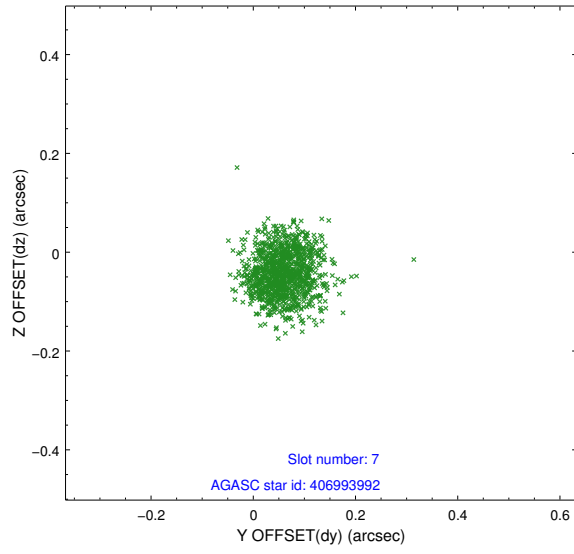
2.4.3 Slot 5



2.4.4 Slot 6

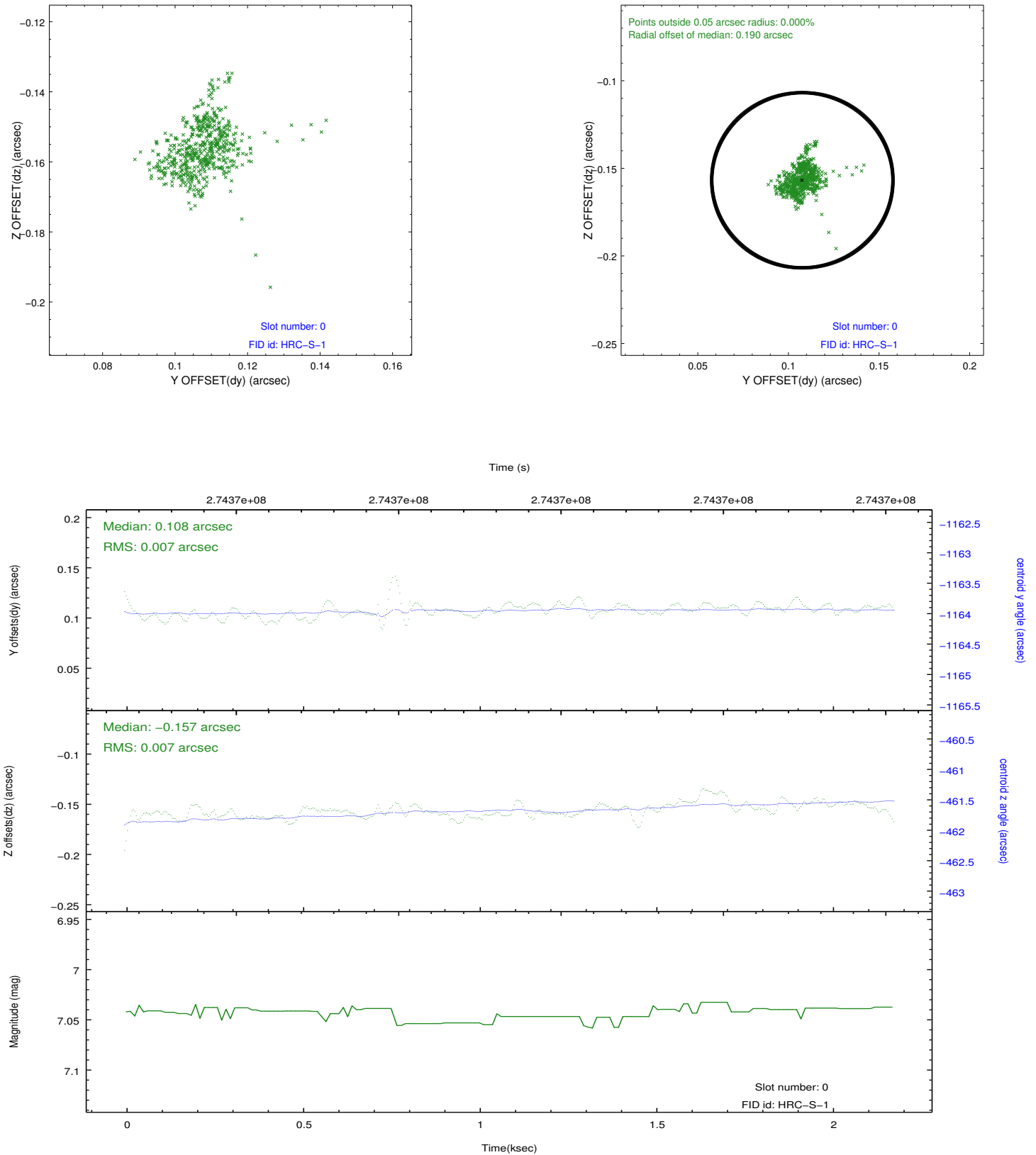


2.4.5 Slot 7

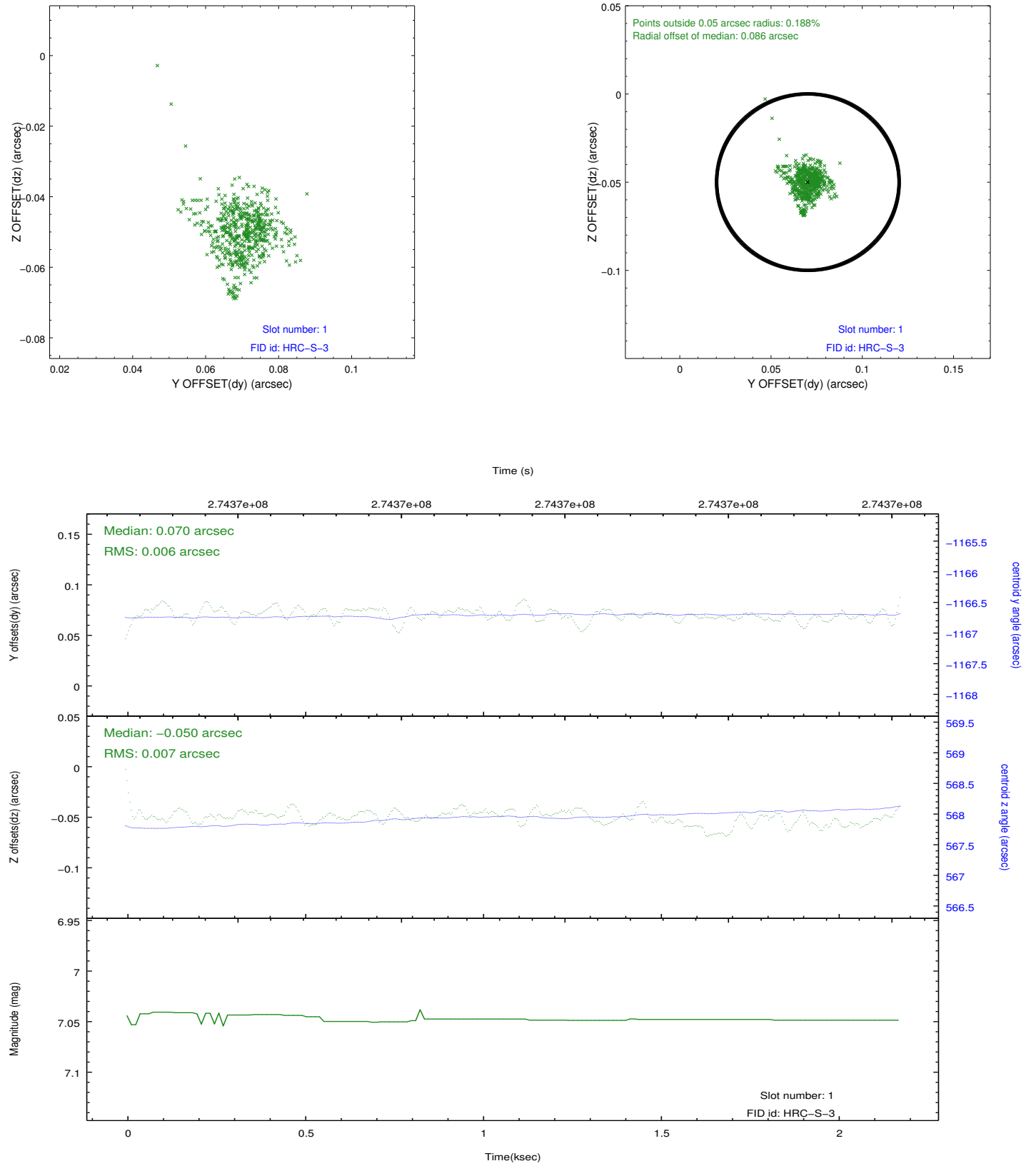


2.5 FID Slots

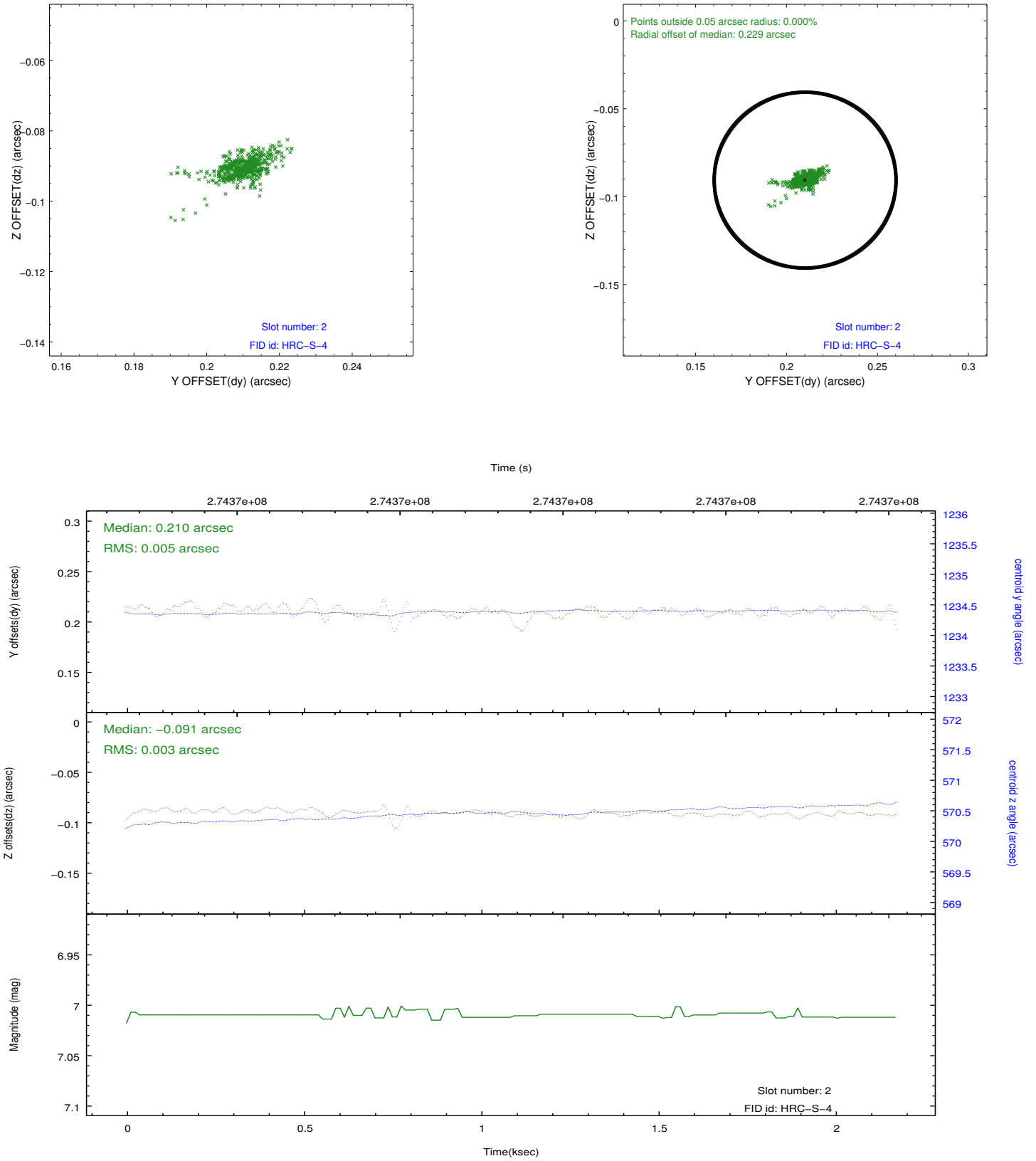
2.5.1 Slot 0



2.5.2 Slot 1



2.5.3 Slot 2



A Summary

A.1 Status

V&V Scientist	Jen Lauer
V&V Date (YYYY-MM-DD)	2012.08.13
V&V Edition	1
V&V Disposition and Status	OK
V&V Charge Time	2.18043135

A.2 Comments

Window constraint met. The target is offset from the aimpoint, and is therefore extended and asymmetric. Additionally, there are internal reflections off the detector that fall onto the chip.