

# V&V Reference Report

## L2 ASCDS Version : 8.5.1.1

Observation 6289 - L2 Version 3  
Chandra X-Ray Center

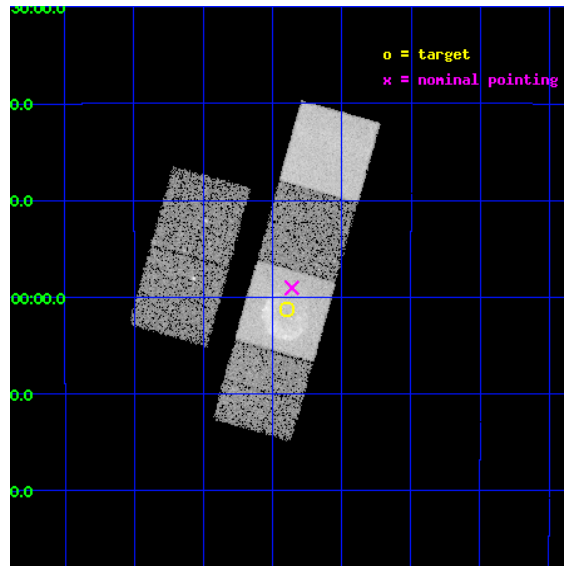
L2 Processing Date : Dec 23 2012

## Contents

<b>1</b>	<b>Front</b>	<b>2</b>
<b>2</b>	<b>OBI</b>	<b>3</b>
2.1	OBI . . . . .	3
2.1.1	Images . . . . .	3
2.1.2	Bias . . . . .	3
2.1.3	Parameters . . . . .	4
2.1.4	Events . . . . .	4
2.2	Compared Parameters . . . . .	5
2.3	Aspect . . . . .	6
2.4	Star Slots . . . . .	9
2.4.1	Slot 3 . . . . .	9
2.4.2	Slot 4 . . . . .	10
2.4.3	Slot 5 . . . . .	11
2.4.4	Slot 6 . . . . .	12
2.4.5	Slot 7 . . . . .	13
2.5	FID Slots . . . . .	14
2.5.1	Slot 0 . . . . .	14
2.5.2	Slot 1 . . . . .	15
2.5.3	Slot 2 . . . . .	16
<b>A</b>	<b>Summary</b>	<b>17</b>
A.1	Status . . . . .	17
A.2	Comments . . . . .	17

# 1 Front

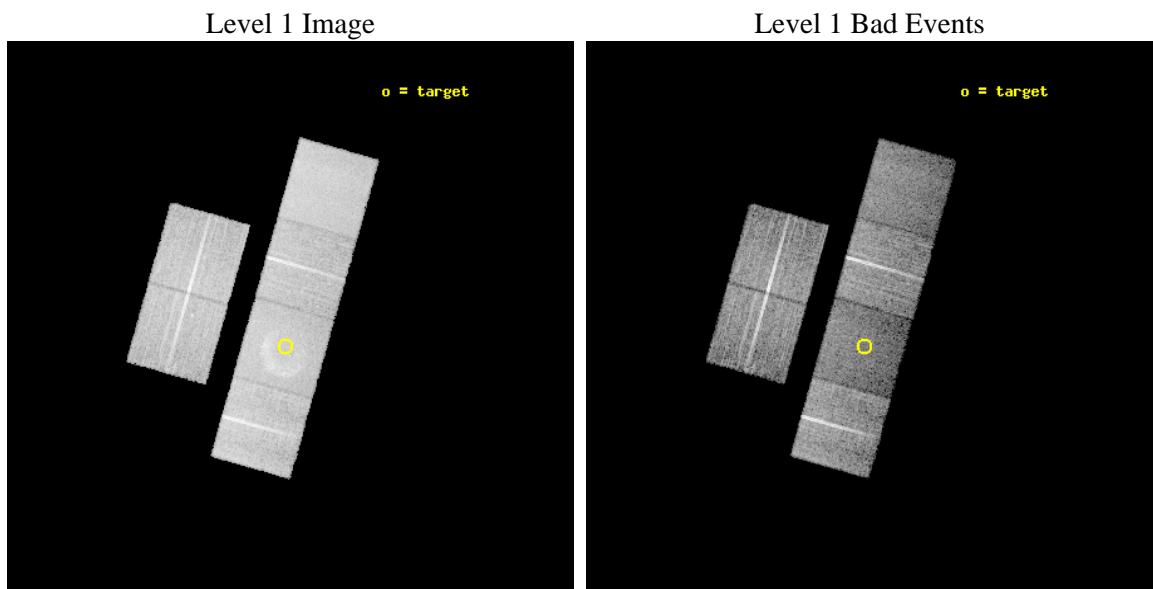
seq_num	500524	Sequence number
obs_id	6289	Observation id
title	Small-Diameter Galactic Supernova Remnants: The Missing Young Remnants?	Proposal title
observer	Dr. Stephen Reynolds	Principal investigator
object	G15.9+0.2	Source name
dtcycle	0	&#160
cycle	P	events from which exps? Prim/Second/Both
ra_targ	274.72375	Observer's specified target RA [deg]
dec_targ	-15.020556	Observer's specified target Dec [deg]
ra_nom	274.71500476215	Nominal RA [deg]
dec_nom	-14.98410369436	Nominal Dec [deg]
roll_nom	105.75435087718	Nominal Roll [deg]
revision	3	Processing version of data
ontime	15123.199943662	Sum of GTIs [s]
livetime	14931.700879877	Livetime [s]
ontime2	15123.199943662	Sum of GTIs [s]
ontime3	15119.958963394	Sum of GTIs [s]
ontime5	15123.199943662	Sum of GTIs [s]
ontime6	15119.959003299	Sum of GTIs [s]
ontime7	15123.199943662	Sum of GTIs [s]
ontime8	15119.958973289	Sum of GTIs [s]
l2events	143908	Number of level 2 events



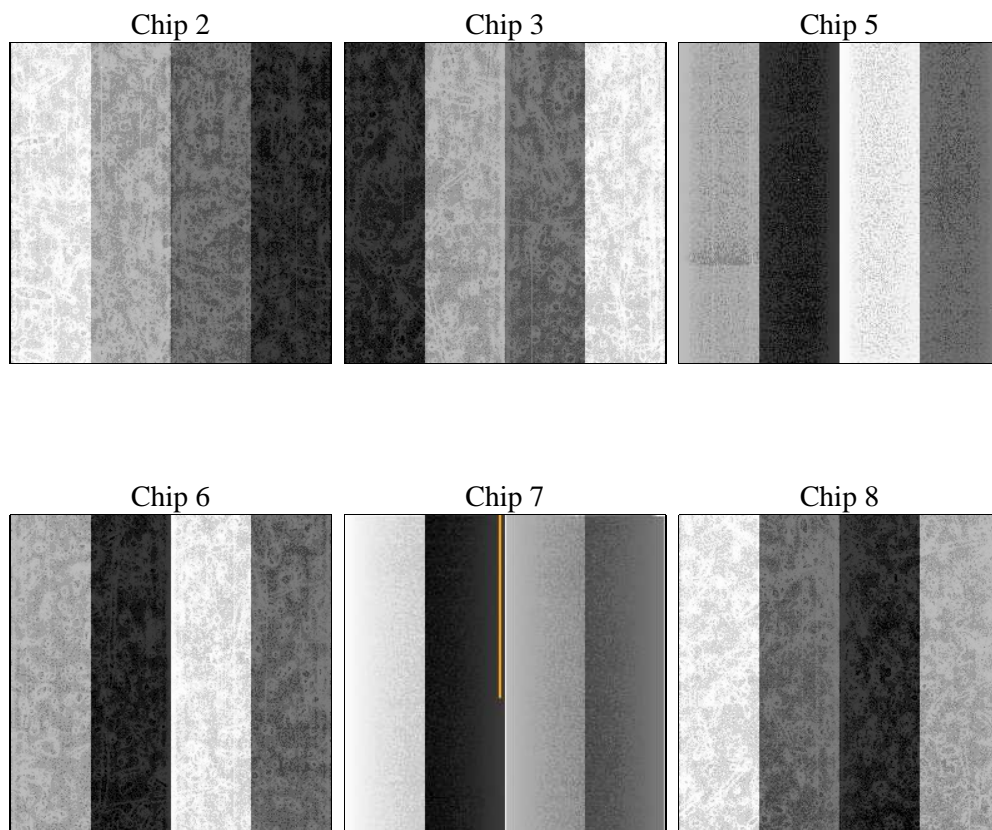
## 2 OBI

### 2.1 OBI

#### 2.1.1 Images



#### 2.1.2 Bias



### 2.1.3 Parameters

obi_num	0	Obi number	sched_exp_time	15000.000000	[s] Scheduled observation exposure time
ascdsver	8.5.1.1	Processing system revision	ontime	15123.199943662	Sum of GTIs [s]
caldsver	4.5.5	&#160	ontime2	15123.199943662	Sum of GTIs [s]
date	2012-12-23T18:43:08	Date and time of file creation	ontime3	15119.958963394	Sum of GTIs [s]
revision	3	Processing version of data	ontime5	15123.199943662	Sum of GTIs [s]
			ontime6	15119.959003299	Sum of GTIs [s]
			ontime7	15123.199943662	Sum of GTIs [s]
			ontime8	15119.958973289	Sum of GTIs [s]
			l1events	607730	Number of level 1 events

### 2.1.4 Events

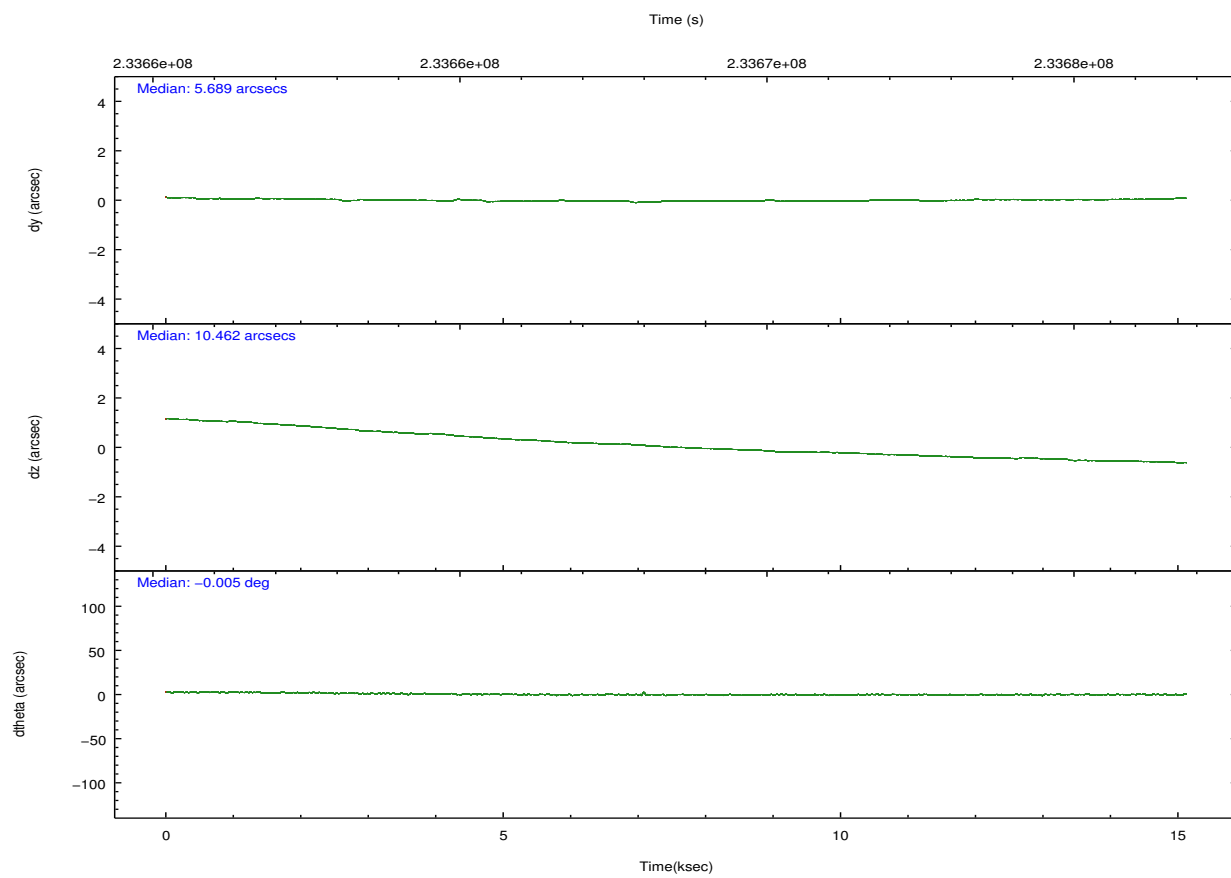
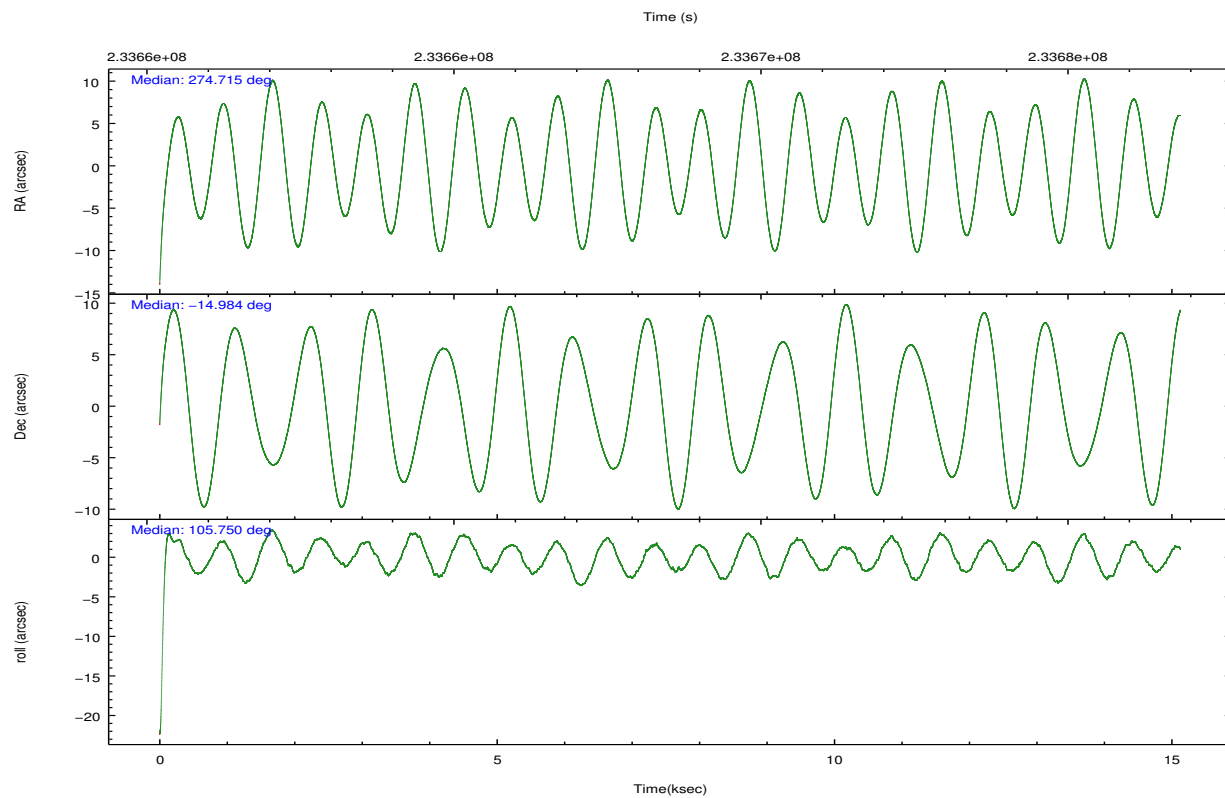
	ccd 2	ccd 3	ccd 5	ccd 6	ccd 7	ccd 8		ccd 2	ccd 3	ccd 5	ccd 6	ccd 7	ccd 8
level 1 events	96990	89351	112855	92631	107967	107936	grade 0 events	4315	4182	3078	4013	7067	4995
rejected events	87687	80064	59010	83021	51570	89721		4%	4%	2%	4%	6%	4%
rejected %	90%	89%	52%	89%	47%	83%	grade 1 events	53	53	44	42	91	64
								0%	0%	0%	0%	0%	0%
							grade 2 events	1839	1894	16008	1944	12122	3942
								1%	2%	14%	2%	11%	3%
							grade 3 events	881	922	2126	956	5588	1796
								0%	1%	1%	1%	5%	1%
							grade 4 events	886	942	2131	1026	5681	1603
								0%	1%	1%	1%	5%	1%
							grade 5 events	2888	3324	9349	3543	10458	4808
								2%	3%	8%	3%	9%	4%
							grade 6 events	1678	1631	32196	2015	27498	6507
								1%	1%	28%	2%	25%	6%
							grade 7 events	84450	76403	47923	79092	39462	84221
								87%	85%	42%	85%	36%	78%



## 2.2 Compared Parameters

Parameter	Planned	Actual	Parameter	Planned	Actual
Instrument	ACIS	ACIS	Obspar format version number	7	7
Detector	ACIS-235678	ACIS-235678	Obspar file type	PREDICTED	ACTUAL
Grating	NONE	NONE	Obspar update status	NONE	UPDATED
Data mode	VFAINT	VFAINT	Number of optional ACIS chips dropped	0	0
Observation mode	POINTING	POINTING	On-chip summing requested	N	N
[deg] Pointing RA	274.735477	274.7150047621506	Subarray requested	NONE	NONE
[deg] Pointing Dec	-15.002863	-14.98410369435962	Alternating exposures requested	N	N
[deg] Pointing Roll	105.603030	105.7543508771751	[s] Primary exposure time	0.000000	3.2
[mm] SIM focus pos	-0.684267	-0.6828225247311905			
[mm] SIM defocus	0	0.001444936568705701			
[mm] SIM translation stage pos	-190.132523	-190.1400660498719			
[mm] SIM translation stage offset	0	0.00754346686406393			
[s] Observation start time (MET)	233661088.184000	233659805.03942			
Observation start date	2005-05-28T09:50:24	2005-05-28T09:30:05			
[s] Observation end time (MET)	233676088.184000	233677093.20271			
Observation end date	2005-05-28T14:00:24	2005-05-28T14:18:13			
Read mode	TIMED	TIMED			

## 2.3 Aspect

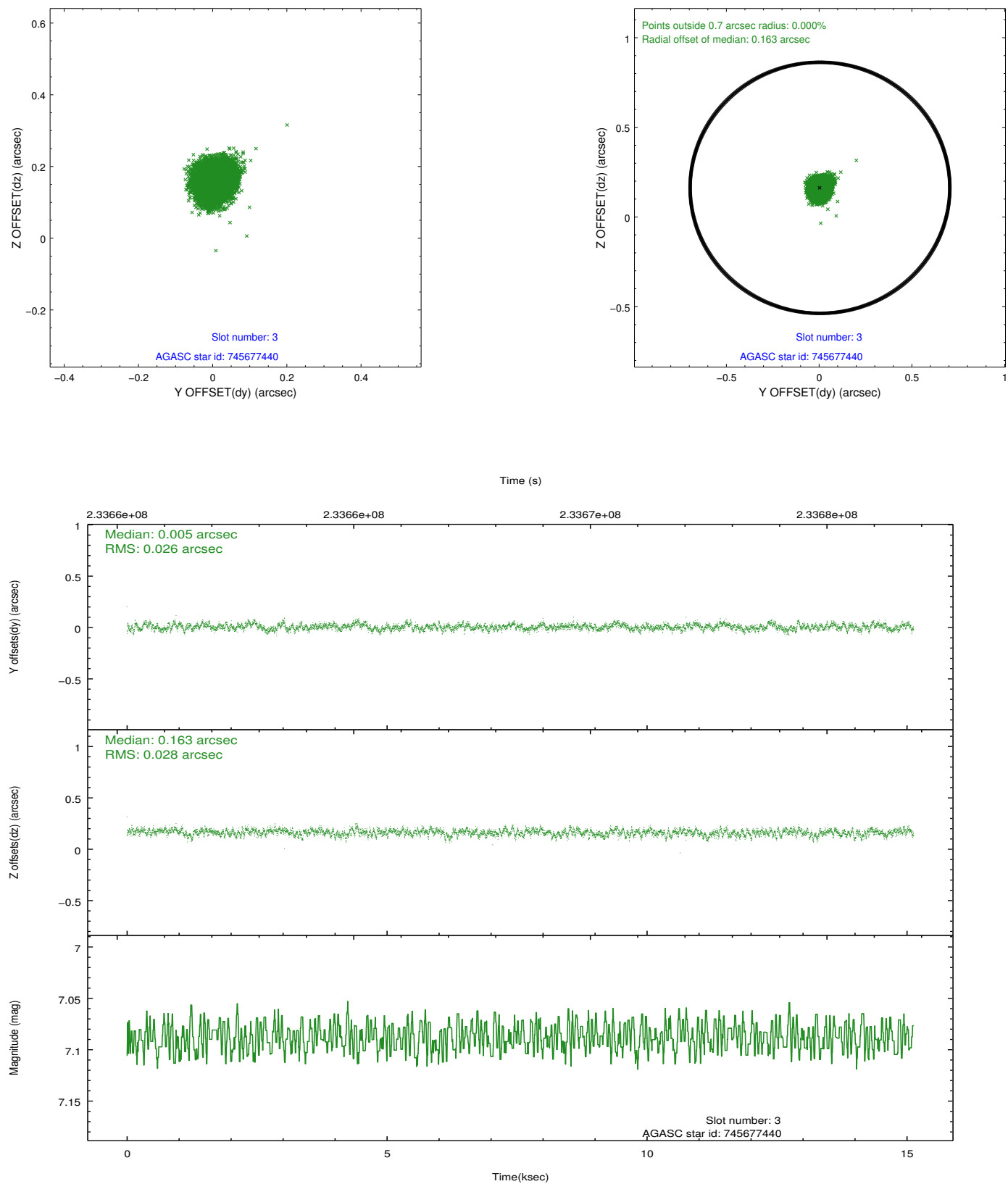


### Slot Statistics

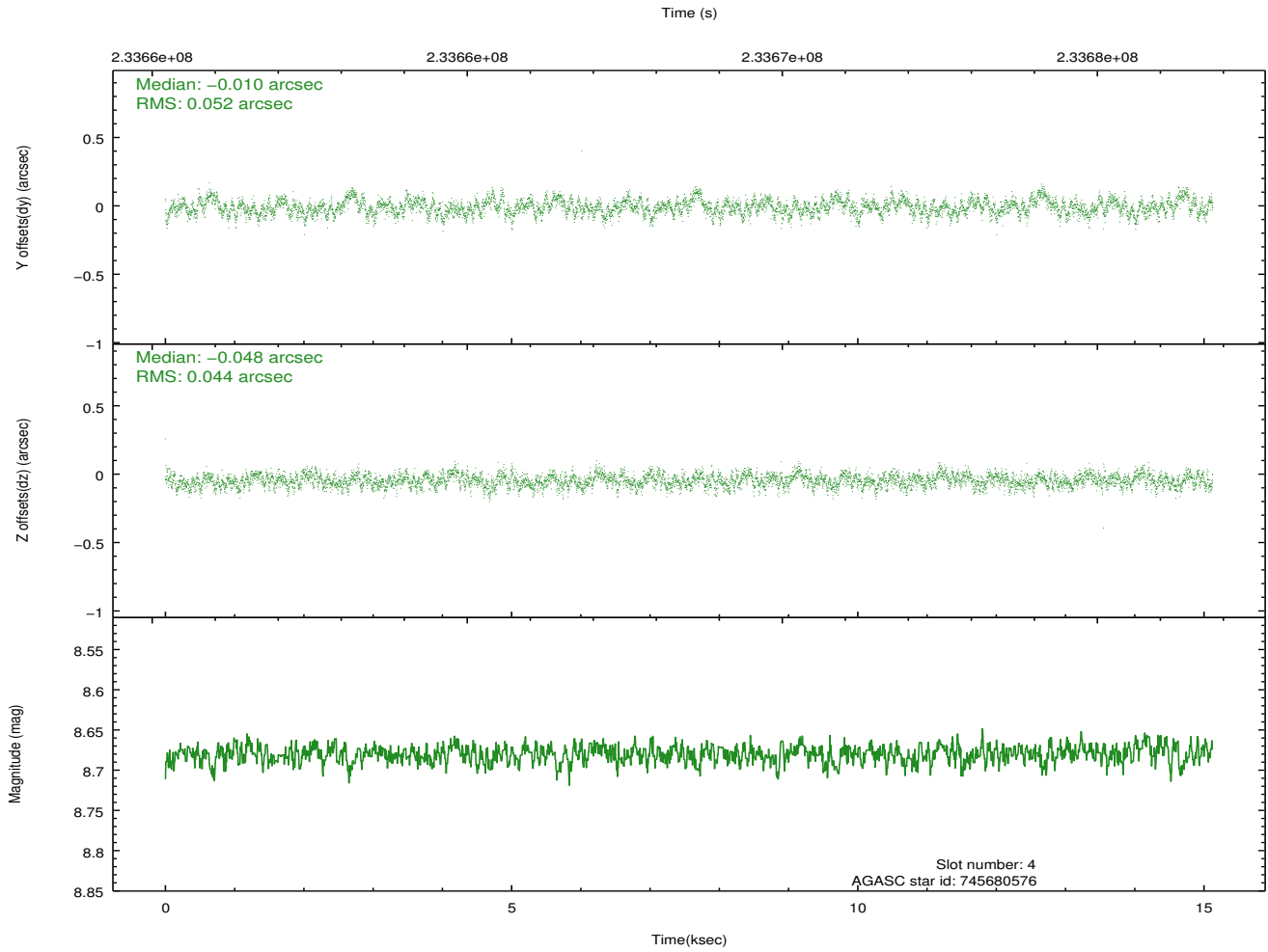
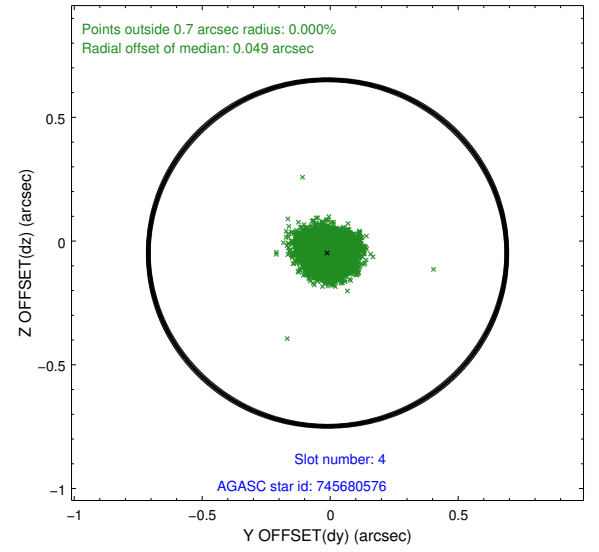
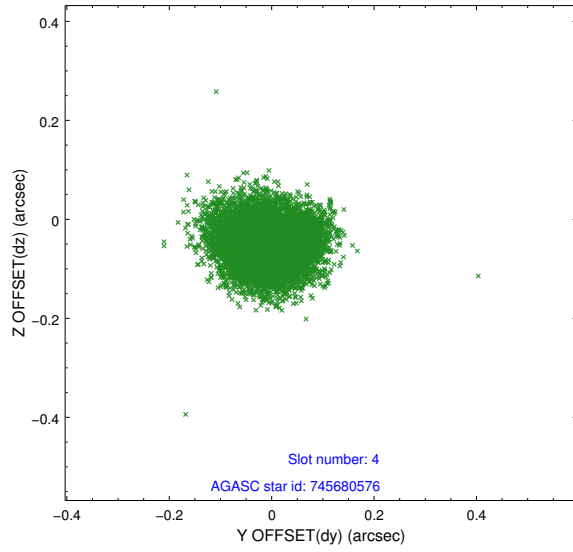
slot	status	id	mag	n_pts	med_dy	med_dz	dr1	dr2	ra	dec	mean_y	mean_z
0	FID	ACIS-S-2	7.10	3690	-0.074	-0.031	0.010	0.018	0.000000	0.000000	-758.46	-1731.88
1	FID	ACIS-S-4	7.21	3690	0.115	0.044	0.009	0.019	0.000000	0.000000	2154.85	176.40
2	FID	ACIS-S-5	7.23	3688	-0.072	-0.003	0.008	0.013	0.000000	0.000000	-1810.94	170.31
3	GUIDE	745677440	7.09	7380	0.005	0.163	0.041	0.066	275.264510	-14.978543	-412.71	-1794.41
4	GUIDE	745680576	8.68	7377	-0.010	-0.048	0.073	0.116	274.063292	-14.644899	1867.40	1909.34
5	GUIDE	821172096	7.77	7379	0.035	0.111	0.053	0.084	275.077024	-15.219483	-1070.70	-932.32
6	GUIDE	745679408	7.65	7378	-0.194	-0.219	0.057	0.088	274.073517	-14.949069	802.06	2166.24
7	GUIDE	821179256	7.41	7376	0.161	-0.006	0.049	0.076	274.840900	-15.612800	-2212.96	238.82

## 2.4 Star Slots

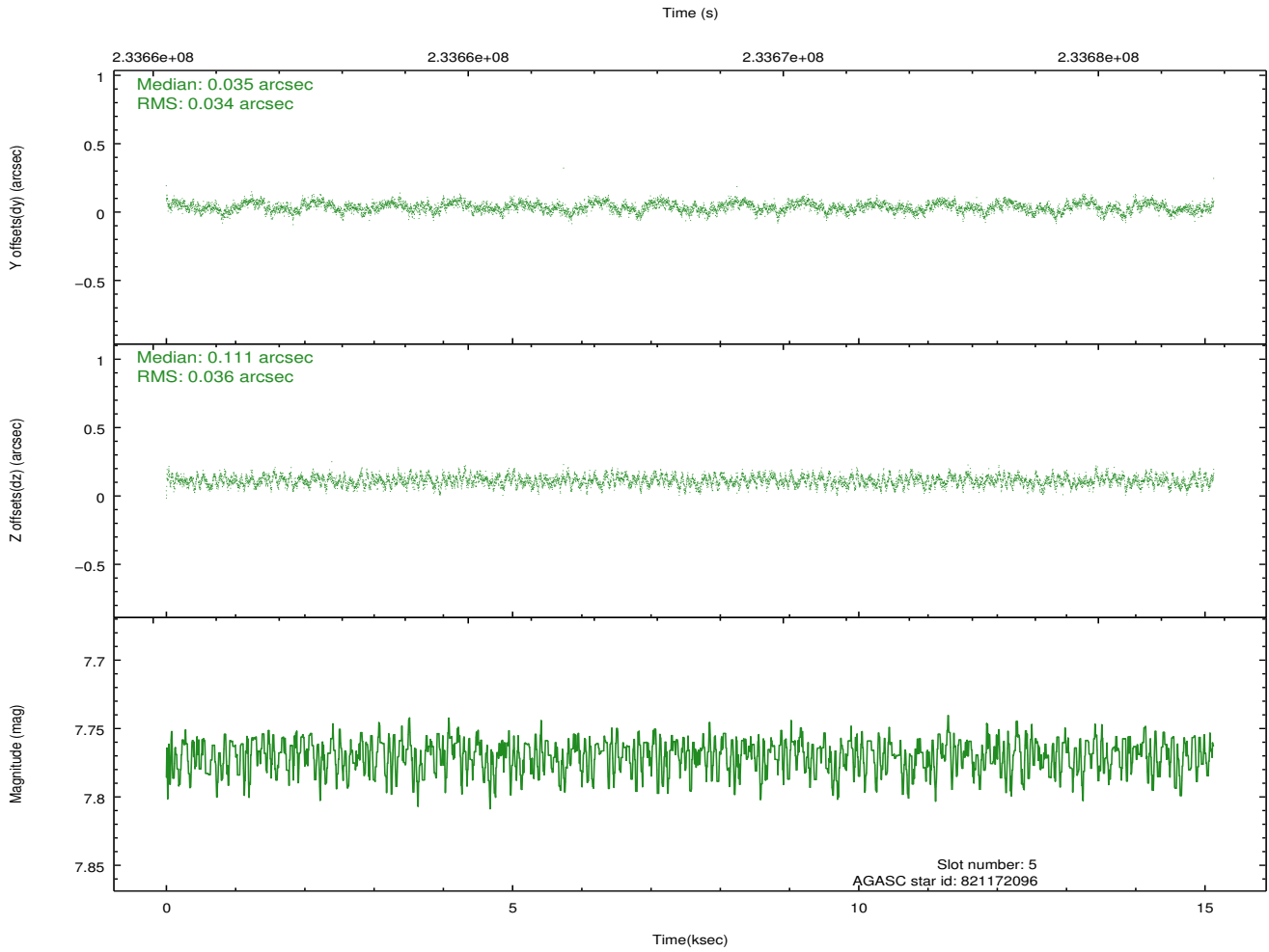
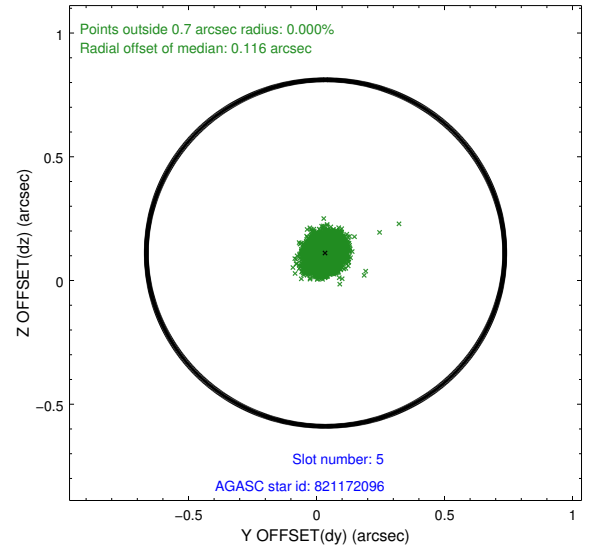
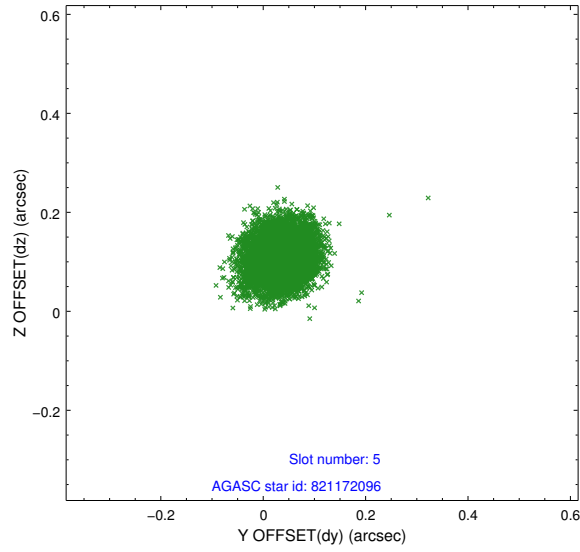
### 2.4.1 Slot 3



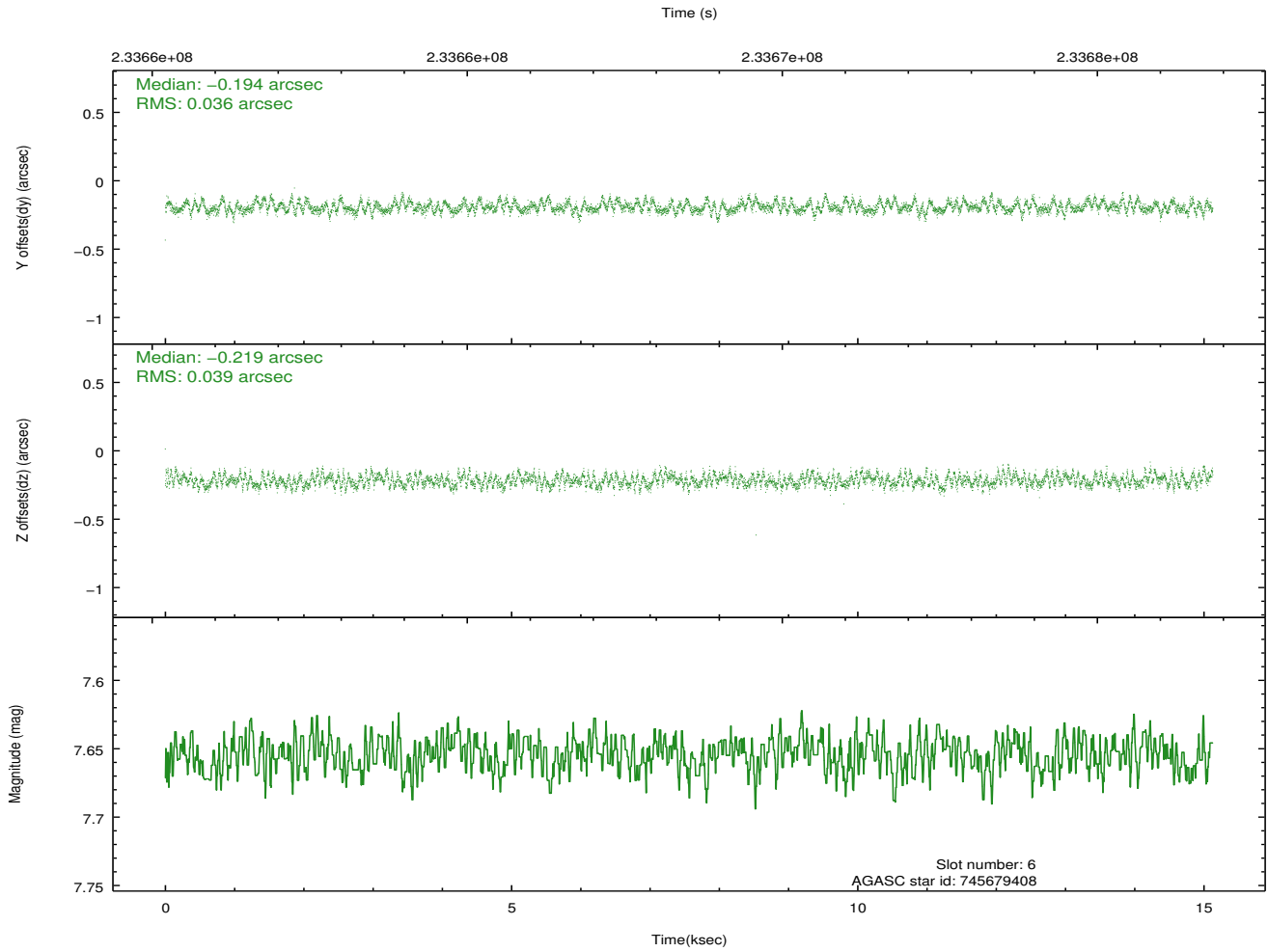
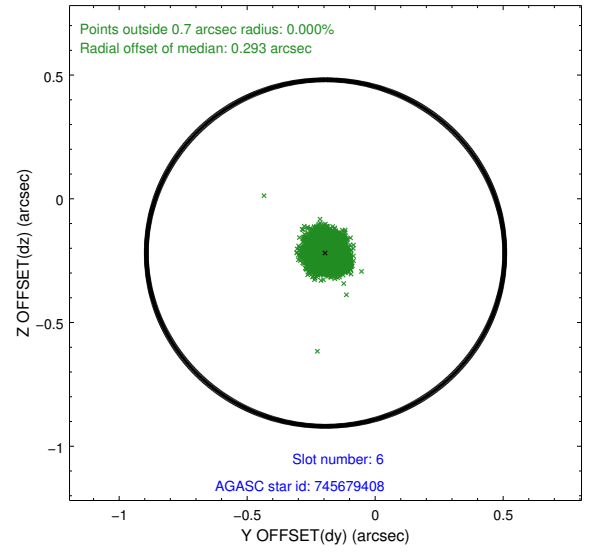
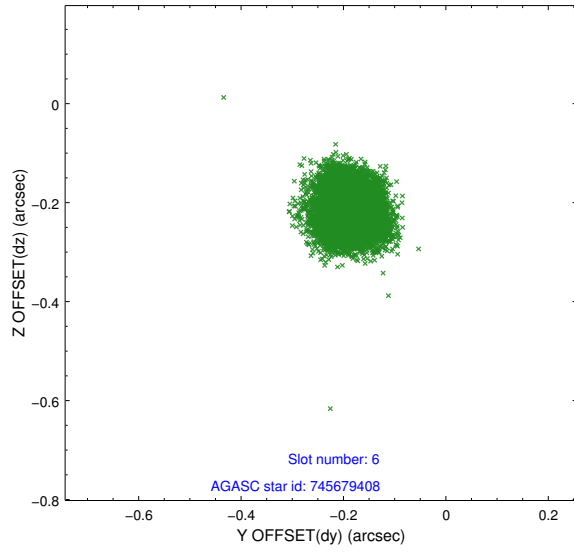
## 2.4.2 Slot 4



### 2.4.3 Slot 5

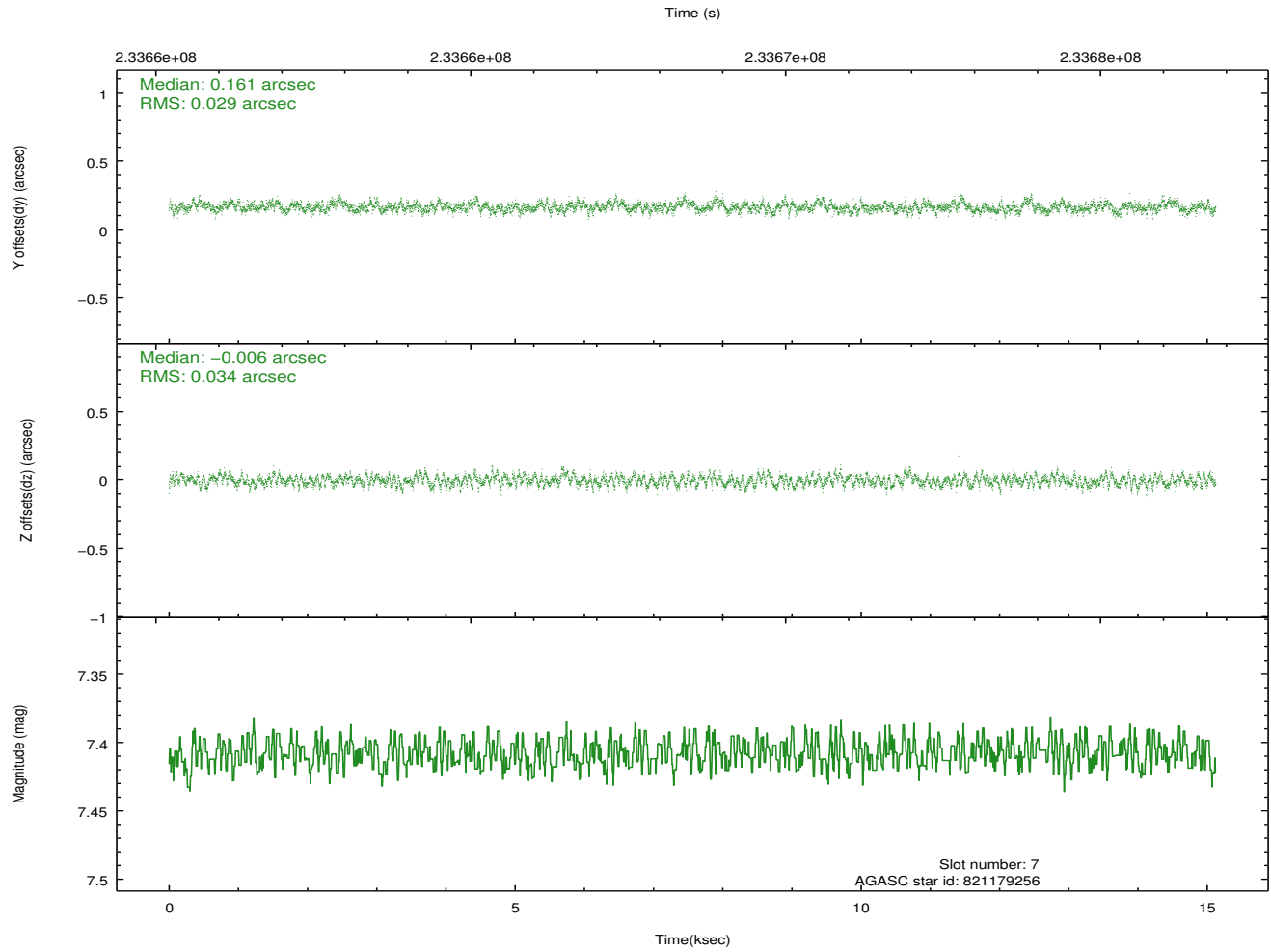
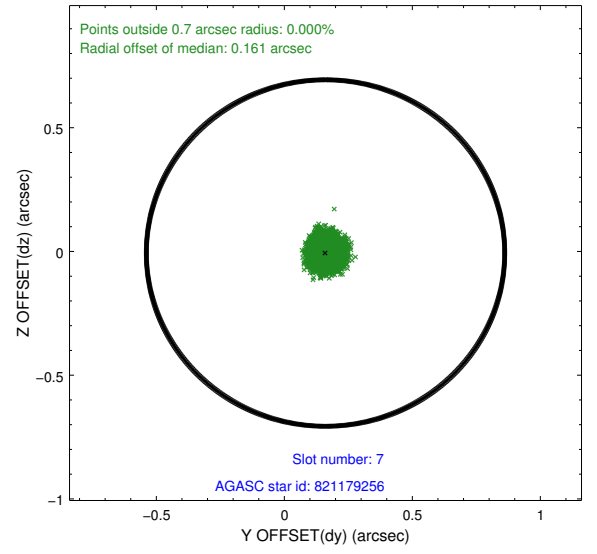
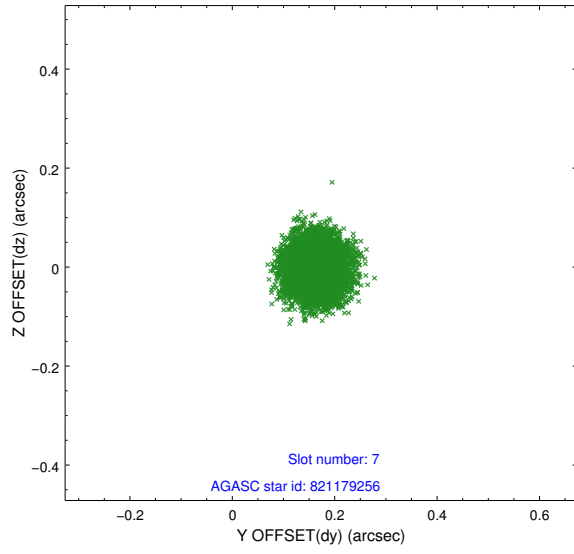


## 2.4.4 Slot 6



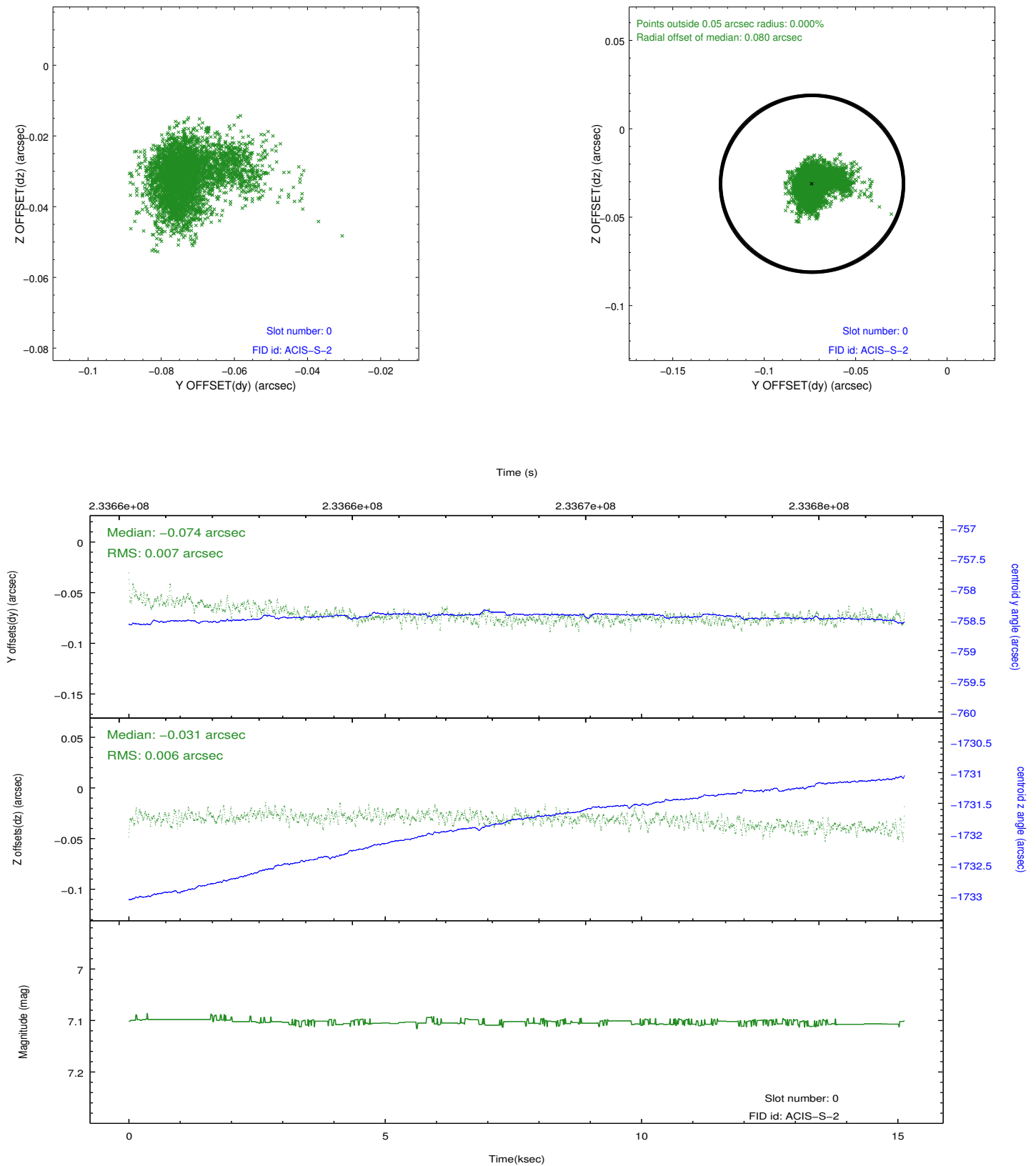


## 2.4.5 Slot 7

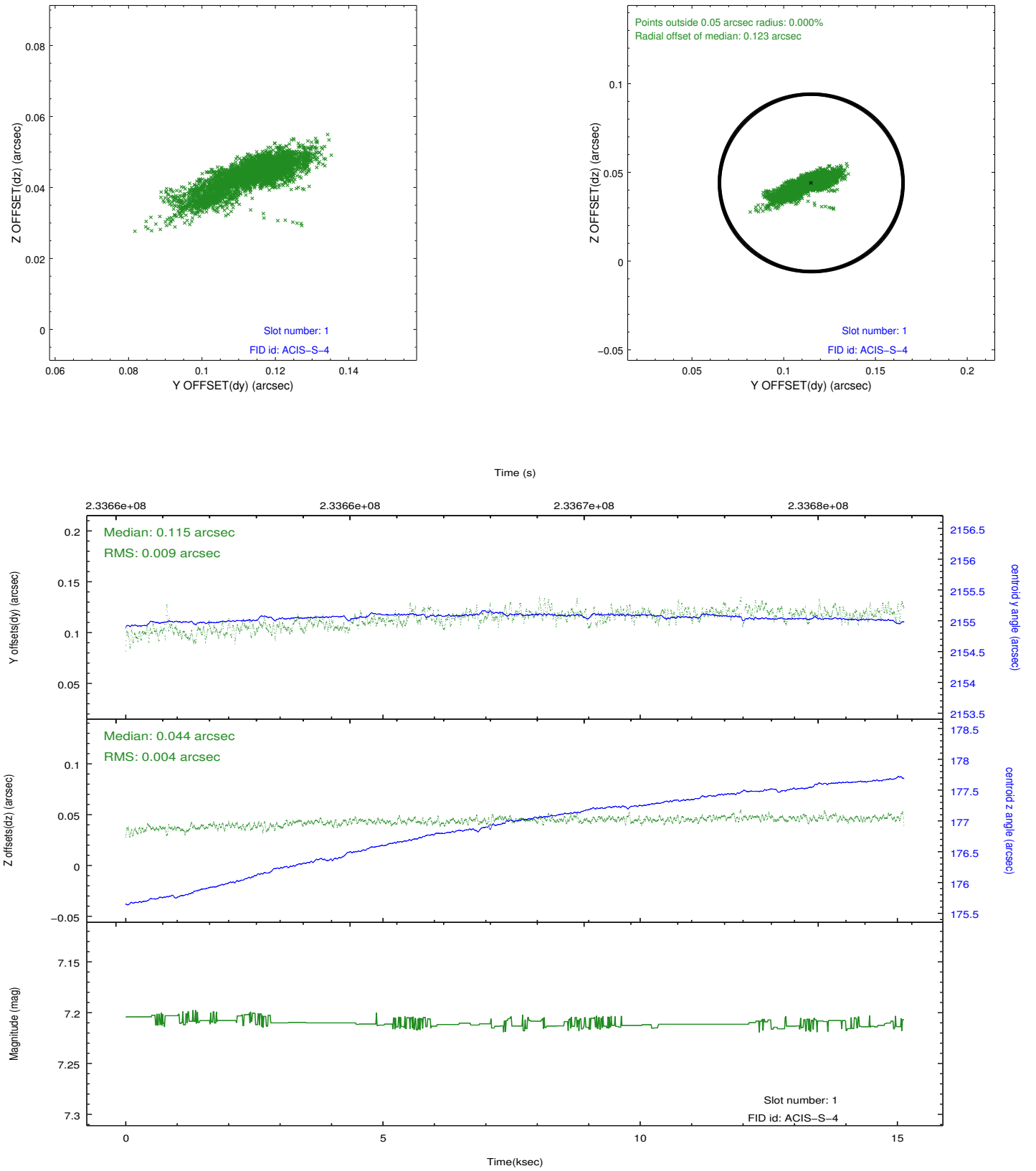


## 2.5 FID Slots

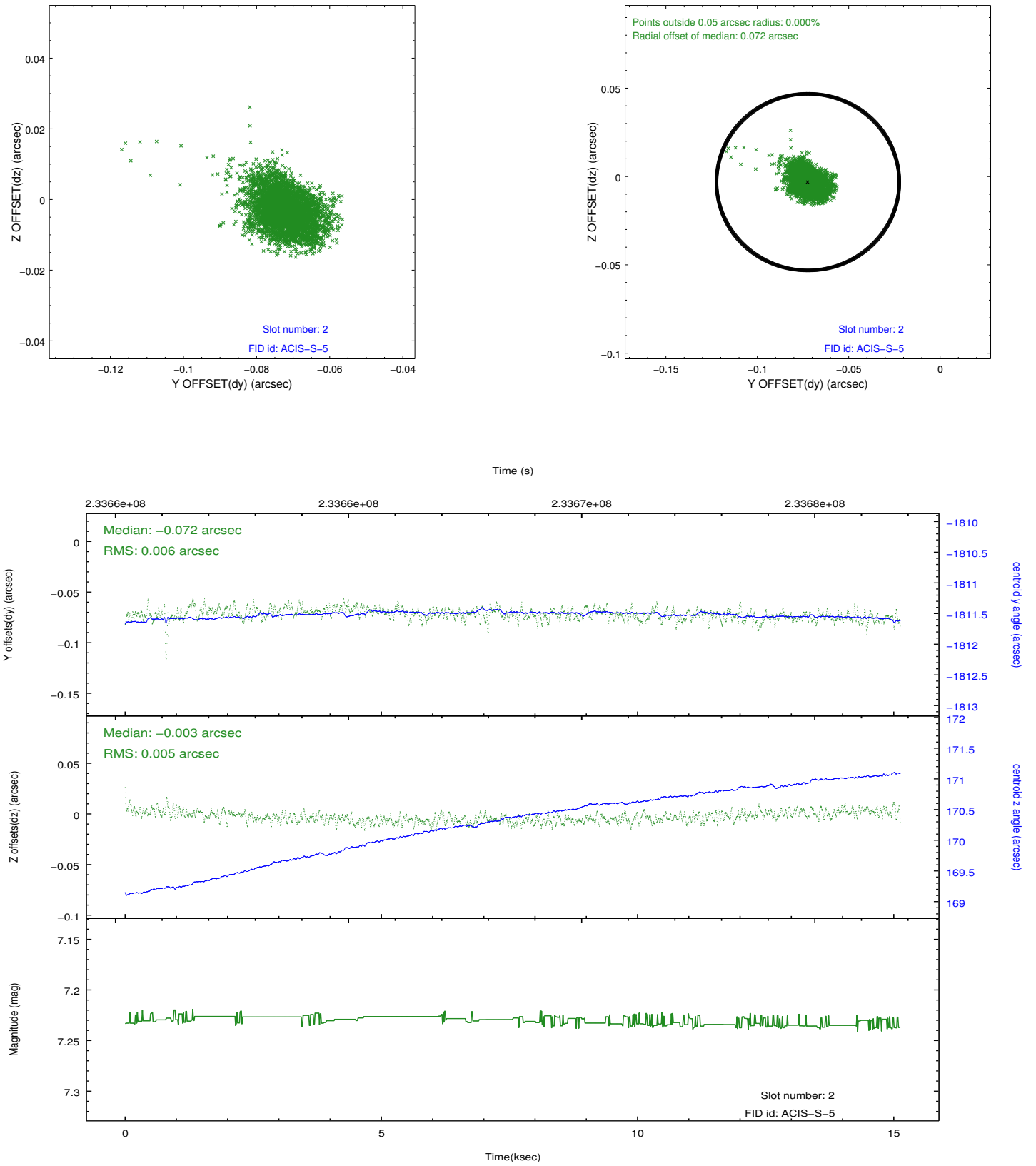
### 2.5.1 Slot 0



## 2.5.2 Slot 1



### 2.5.3 Slot 2



## A Summary

### A.1 Status

V&V Scientist	Jen Lauer
V&V Date (YYYY-MM-DD)	2013.01.16
V&V Edition	1
V&V Disposition and Status	OK
V&V Charge Time	15.12319

### A.2 Comments