

V&V Reference Report

L2 ASCDS Version : 8.1.1

Observation 62299 - L2 Version 4
Chandra X-Ray Center

L2 Processing Date : Nov 24 2009

Contents

1	Front	2
2	OBI	3
2.1	OBI	3
2.1.1	Images	3
2.1.2	Bias	3
2.1.3	Parameters	4
2.1.4	Events	4
2.2	Compared Parameters	5
2.3	Star Slots	6
2.4	FID Slots	6
A	Summary	7
A.1	Status	7
A.2	Comments	7

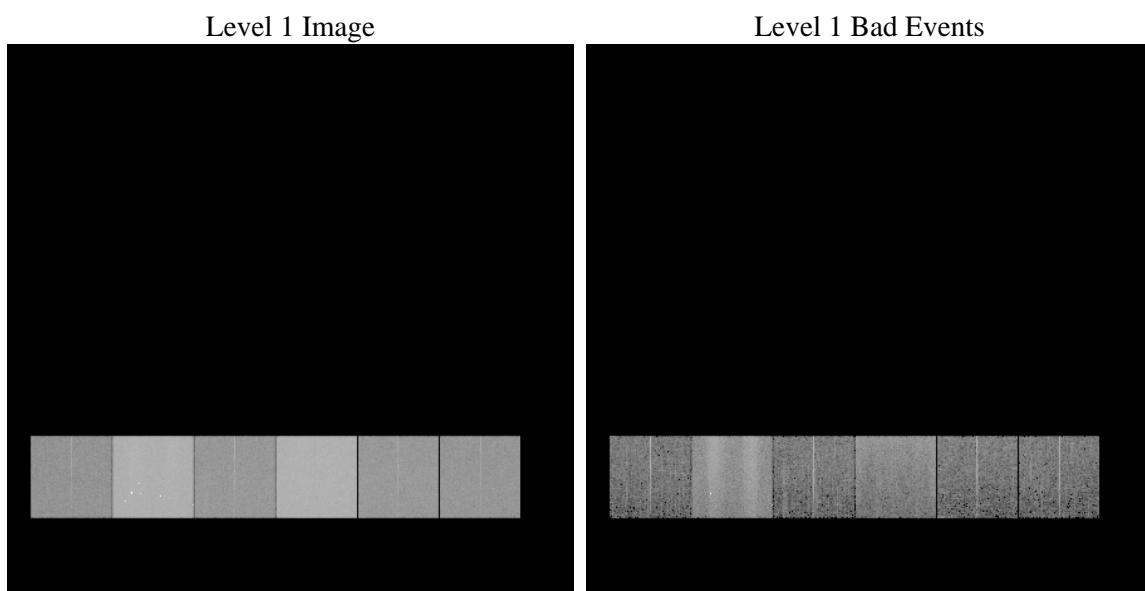
1 Front

seq_num	 	Sequence number
obs_id	62299	Observation id
title	ACIS-456789 diagnostics	Proposal title
observer	CHANDRA engineering request/realtime commanding	Principal investig
object	 	Source name
dtcycle	0	
cycle	P	events from which exps? Prim/Second/Both
ra_targ	0.0	Observer's specified target RA
dec_targ	0.0	Observer's specified target Dec
ra_nom	20.023230817776	Nominal RA
dec_nom	9.9822178855351	Nominal Dec
roll_nom	290.33029625964	Nominal Roll
revision	4	Processing version of data
ontime	5062.493009977	Sum of GTIs [s]
livetime	4998.3886752174	Livetime [s]
ontime4	1883.0429470092	Sum of GTIs [s]
ontime5	5386.9691275582	Sum of GTIs [s]
ontime6	2113.1567874551	Sum of GTIs [s]
ontime7	5062.493009977	Sum of GTIs [s]
ontime8	2161.772307761	Sum of GTIs [s]
ontime9	2025.6487072855	Sum of GTIs [s]
l2events	1599556	Number of level 2 events

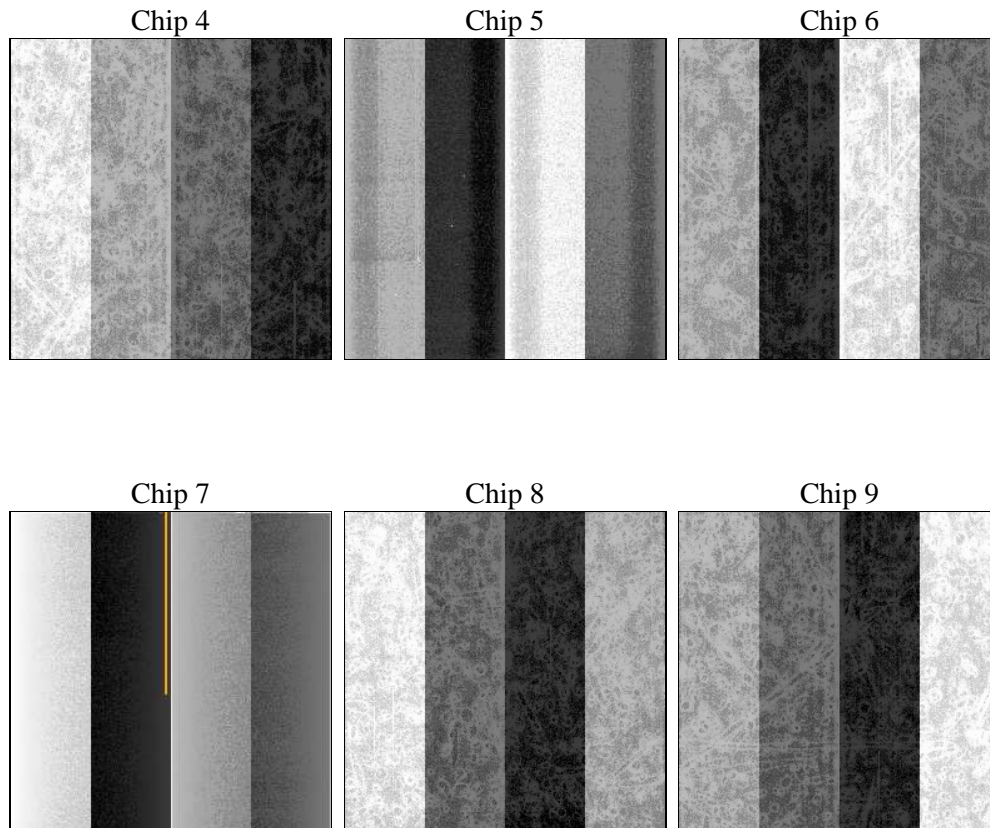
2 OBI

2.1 OBI

2.1.1 Images



2.1.2 Bias



2.1.3 Parameters

obi_num	0	Obi number		
ascdsver	8.1.1	ASCDS version number	sched_exp_time	0.0
caldsver	4.1.4	 		
date	2009-11-24T16:59:50	Date and time of file creation	ontime	5062.493009977
revision	3	Processing version of data	ontime4	1883.0429470092
			ontime5	5386.9691275582
			ontime6	2113.1567874551
			ontime7	5062.493009977
			ontime8	2161.772307761
			ontime9	2025.6487072855
			l1events	1883543

2.1.4 Events

	ccd 4	ccd 5	ccd 6	ccd 7	ccd 8	ccd 9		ccd 4	ccd 5	ccd 6	ccd 7	ccd 8	ccd 9
level 1 events	186001	516767	221866	524990	228479	205440	grade 0 events	36040	48968	52143	85099	68992	54104
rejected events	30723	84380	32988	51681	31509	29641		19%	9%	23%	16%	30%	26%
rejected %	16%	16%	14%	9%	13%	14%	grade 1 events	145	379	214	207	246	210
								0%	0%	0%	0%	0%	0%
							grade 2 events	83454	167652	89141	132738	78363	77836
								44%	32%	40%	25%	34%	37%
							grade 3 events	3673	22234	5238	40868	7247	5566
								1%	4%	2%	7%	3%	2%
							grade 4 events	3633	19459	5344	36570	7185	5474
								1%	3%	2%	6%	3%	2%
							grade 5 events	1516	8791	1894	7364	2030	1801
								0%	1%	0%	1%	0%	0%
							grade 6 events	28478	174324	37012	178034	35183	32819
								15%	33%	16%	33%	15%	15%
							grade 7 events	29062	74960	30880	44110	29233	27630
								15%	14%	13%	8%	12%	13%

2.2 Compared Parameters

Parameter	Planned	Actual	Parameter	Planned	Actual
Instrument	ACIS	ACIS	Obspar format version number	6	6
Detector	ACIS-456789	ACIS-456789	Obspar file type	PREDICTED	ACTUAL
Grating	NONE	NONE	Obspar update status	NONE	UPDATED
Data mode	FAINT	FAINT	On-chip summing requested	N	N
Observation mode	SECONDARY	SECONDARY	Subarray requested	NONE	NONE
Pointing RA	0	20.02323081777584	Alternating exposures requested	N	N
Pointing Dec	0	9.982217885535093	Primary exposure time	3.2	3.2
Pointing Roll	0.0	290.3302962596356			
SIM focus pos (mm)	-0.684267	-0.6828225247311905			
SIM defocus (mm)	0	0.8505141146731063			
SIM translation stage pos (mm)	-190.132523	250.466033080201			
SIM translation stage offset (mm)	0	-0.01005468664627074			
Observation start time	59890824.963725	59890824.195239			
Observation start date	1999-11-25T04:20:25	1999-11-25T04:20:24			
Observation end time	59903944.964201	59903944.195713			
Observation end date	1999-11-25T07:59:05	1999-11-25T07:59:04			
Read mode	TIMED	TIMED			

2.3 Star Slots

2.4 FID Slots

A Summary

A.1 Status

V&V Scientist	Beth Sundheim
V&V Date (YYYY-MM-DD)	2010.08.12
V&V Edition	1
V&V Disposition and Status	OK
V&V Charge Time	5.062493009977

A.2 Comments

This observation was acquired with the focal plane temperature raised from -120C to -110C, for attempted recalibration of ACIS for the 1999-09-16 through 2000-01-28 period. This reprocessing of the data applies no CTI correction because none is available for that temperature.