

# V&V Reference Report

## L2 ASCDS Version : 8.4.5

Observation 62179 - L2 Version 4  
Chandra X-Ray Center

L2 Processing Date : Aug 22 2012

## Contents

<b>1</b>	<b>Front</b>	<b>2</b>
<b>2</b>	<b>OBI</b>	<b>3</b>
2.1	OBI . . . . .	3
2.1.1	Images . . . . .	3
2.1.2	Bias . . . . .	3
2.1.3	Parameters . . . . .	4
2.1.4	Events . . . . .	4
2.2	Compared Parameters . . . . .	5
2.3	Star Slots . . . . .	6
2.4	FID Slots . . . . .	6
<b>A</b>	<b>Summary</b>	<b>7</b>
A.1	Status . . . . .	7
A.2	Comments . . . . .	7

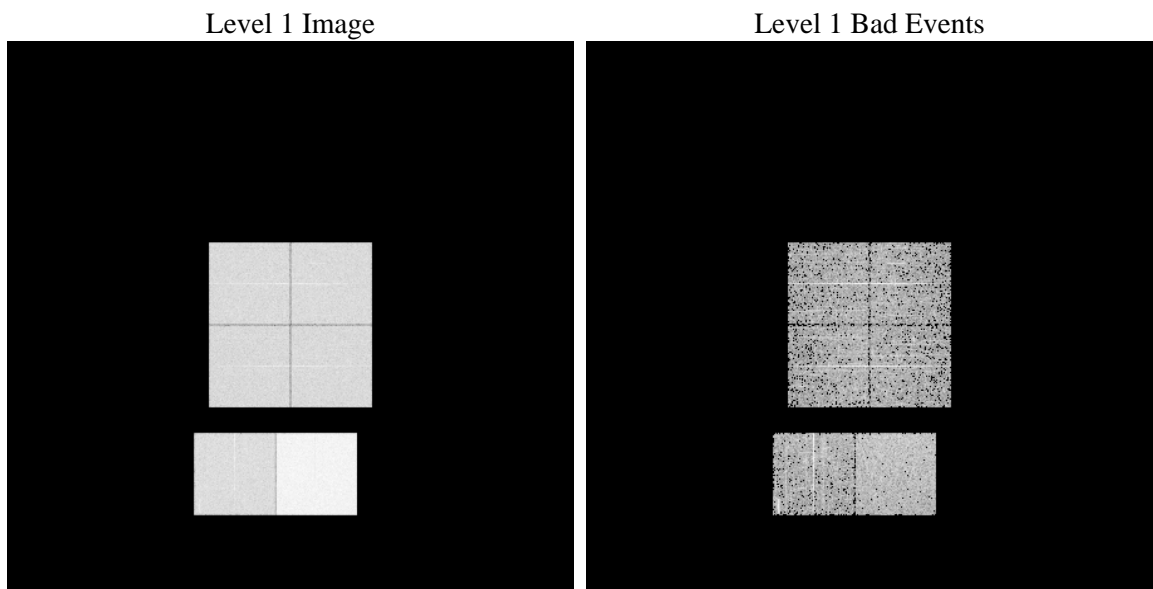
# 1 Front

seq_num	&#160	Sequence number
obs_id	62179	Observation id
title	ACIS-012367 diagnostics	Proposal title
observer	CHANDRA engineering request/realtime commanding	Principal investig
object	&#160	Source name
dtcycle	0	&#160
cycle	P	events from which exps? Prim/Second/Both
ra_targ	0.0	Observer's specified target RA [deg]
dec_targ	0.0	Observer's specified target Dec [deg]
ra_nom	52.82490067103	Nominal RA [deg]
dec_nom	43.881681313354	Nominal Dec [deg]
roll_nom	280.51612565496	Nominal Roll [deg]
revision	4	Processing version of data
ontime	3436.7694094107	Sum of GTIs [s]
livetime	3393.2509657746	Livetime [s]
ontime0	1413.0920862779	Sum of GTIs [s]
ontime1	1432.5381268114	Sum of GTIs [s]
ontime2	1333.2300072089	Sum of GTIs [s]
ontime3	1356.0815270394	Sum of GTIs [s]
ontime6	1474.6717266813	Sum of GTIs [s]
ontime7	3436.7694094107	Sum of GTIs [s]
l2events	910224	Number of level 2 events

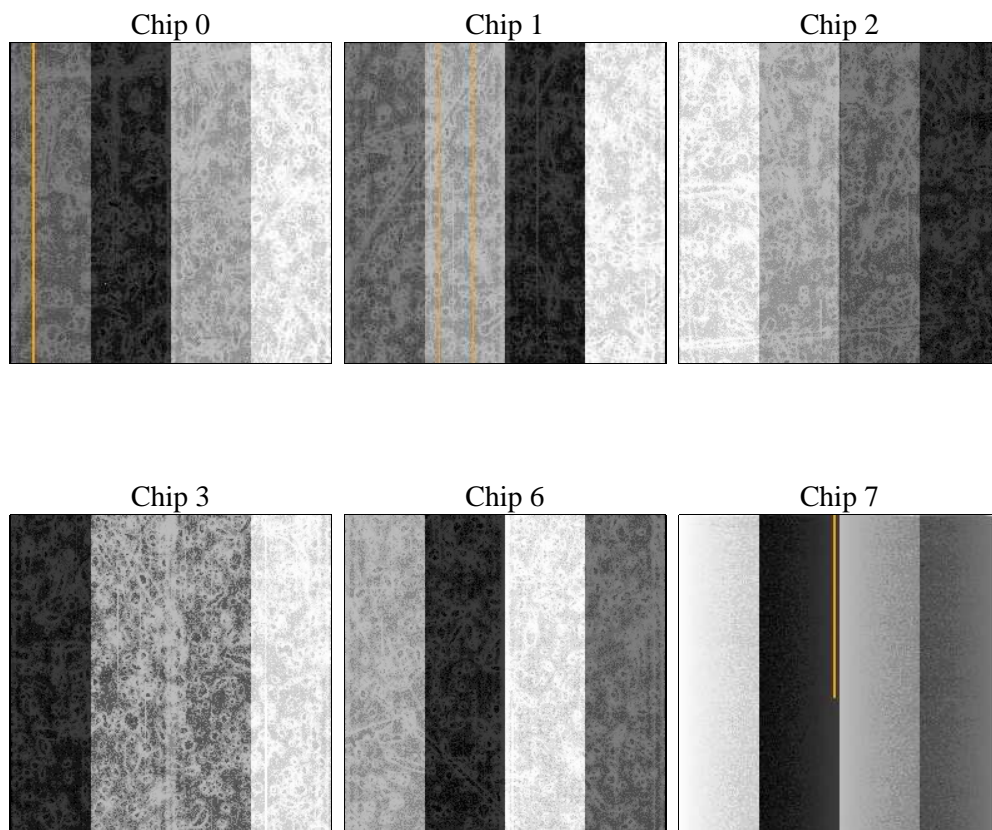
## 2 OBI

### 2.1 OBI

#### 2.1.1 Images



#### 2.1.2 Bias



### 2.1.3 Parameters

obi_num	0	Obi number	sched_exp_time	0.0	[s] Scheduled observation exposure time
ascdsver	8.4.5	Processing system revision	ontime	3436.7694094107	Sum of GTIs [s]
caldbver	4.5.1.1	&#160	ontime0	1413.0920862779	Sum of GTIs [s]
date	2012-08-22T13:52:44	Date and time of file creation	ontime1	1432.5381268114	Sum of GTIs [s]
revision	4	Processing version of data	ontime2	1333.2300072089	Sum of GTIs [s]
			ontime3	1356.0815270394	Sum of GTIs [s]
			ontime6	1474.6717266813	Sum of GTIs [s]
			ontime7	3436.7694094107	Sum of GTIs [s]
			l1events	1050067	Number of level 1 events

### 2.1.4 Events

	ccd 0	ccd 1	ccd 2	ccd 3	ccd 6	ccd 7		ccd 0	ccd 1	ccd 2	ccd 3	ccd 6	ccd 7
level 1 events	140201	141814	134908	137303	154203	341638	grade 0 events	69454	70713	67036	68495	75637	82618
rejected events	15288	15248	15598	15274	17237	23362		49%	49%	49%	49%	49%	24%
rejected %	10%	10%	11%	11%	11%	6%	grade 1 events	449	473	418	449	467	232
								0%	0%	0%	0%	0%	0%
							grade 2 events	22015	22026	21118	21483	23580	71000
								15%	15%	15%	15%	15%	20%
							grade 3 events	7918	8039	7504	7896	8534	32983
								5%	5%	5%	5%	5%	9%
							grade 4 events	8038	8141	7447	7883	8486	32412
								5%	5%	5%	5%	5%	9%
							grade 5 events	1036	1129	978	1026	1175	4789
								0%	0%	0%	0%	0%	1%
							grade 6 events	18341	18498	17039	17094	21652	101666
								13%	13%	12%	12%	14%	29%
							grade 7 events	12950	12795	13368	12977	14672	15938
								9%	9%	9%	9%	9%	4%

## 2.2 Compared Parameters

Parameter	Planned	Actual	Parameter	Planned	Actual
Instrument	ACIS	ACIS	Obspar format version number	7	7
Detector	ACIS-012367	ACIS-012367	Obspar file type	PREDICTED	ACTUAL
Grating	NONE	NONE	Obspar update status	NONE	UPDATED
Data mode	FAINT	FAINT	On-chip summing requested	N	N
Observation mode	SECONDARY	SECONDARY	Subarray requested	NONE	NONE
[deg] Pointing RA	0	52.82490067102984	Alternating exposures requested	N	N
[deg] Pointing Dec	0	43.88168131335399	[s] Primary exposure time	3.2	3.2
[deg] Pointing Roll	0.0	280.5161256549616			
[mm] SIM focus pos	-0.782348	-0.6828225247311905			
[mm] SIM defocus	0	0.8505141146731063			
[mm] SIM translation stage pos	-233.592463	250.466033080201			
[mm] SIM translation stage offset	0	-0.01005468664627074			
[s] Observation start time (MET)	66525242.254365	66525241.485895			
Observation start date	2000-02-09T23:14:02	2000-02-09T23:14:01			
[s] Observation end time (MET)	66532542.304631	66532541.536161			
Observation end date	2000-02-10T01:15:42	2000-02-10T01:15:41			
Read mode	TIMED	TIMED			

## **2.3 Star Slots**

## **2.4 FID Slots**

## A Summary

### A.1 Status

V&V Scientist	Jen Lauer
V&V Date (YYYY-MM-DD)	2012.08.23
V&V Edition	1
V&V Disposition and Status	OK
V&V Charge Time	3.4367694094107

### A.2 Comments