

V&V Reference Report

L2 ASCDS Version : 8.4.5

Observation 62129 - L2 Version 4
Chandra X-Ray Center

L2 Processing Date : Aug 24 2012

Contents

1	Front	2
2	OBI	3
2.1	OBI	3
2.1.1	Images	3
2.1.2	Bias	3
2.1.3	Parameters	4
2.1.4	Events	4
2.2	Compared Parameters	5
2.3	Star Slots	6
2.4	FID Slots	6
A	Summary	7
A.1	Status	7
A.2	Comments	7

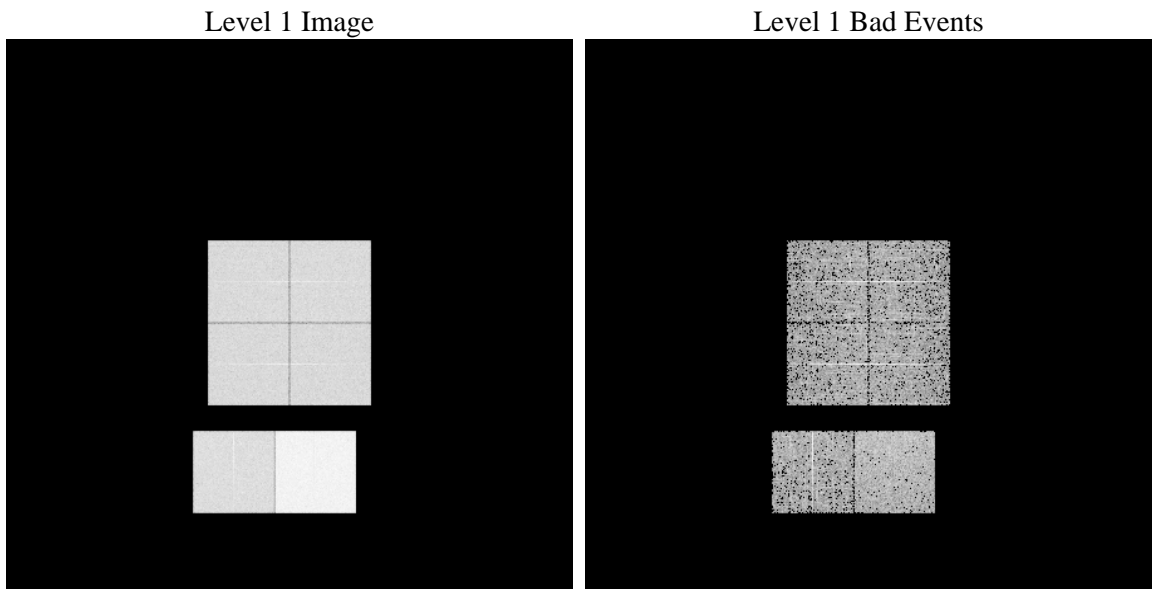
1 Front

seq_num	 	Sequence number
obs_id	62129	Observation id
title	ACIS-012367 diagnostics	Proposal title
observer	CHANDRA engineering request/realtime commanding	Principal investig
object	 	Source name
dtcycle	0	
cycle	P	events from which exps? Prim/Second/Both
ra_targ	0.0	Observer's specified target RA [deg]
dec_targ	0.0	Observer's specified target Dec [deg]
ra_nom	257.38384764777	Nominal RA [deg]
dec_nom	-30.902316870554	Nominal Dec [deg]
roll_nom	85.019010399532	Nominal Roll [deg]
revision	4	Processing version of data
ontime	3536.1254772097	Sum of GTIs [s]
livetime	3491.3489272181	Livetime [s]
ontime0	1480.8930157423	Sum of GTIs [s]
ontime1	1487.4161656201	Sum of GTIs [s]
ontime2	1406.7826028019	Sum of GTIs [s]
ontime3	1403.0261055529	Sum of GTIs [s]
ontime6	1584.7293456048	Sum of GTIs [s]
ontime7	3536.1254772097	Sum of GTIs [s]
l2events	930732	Number of level 2 events

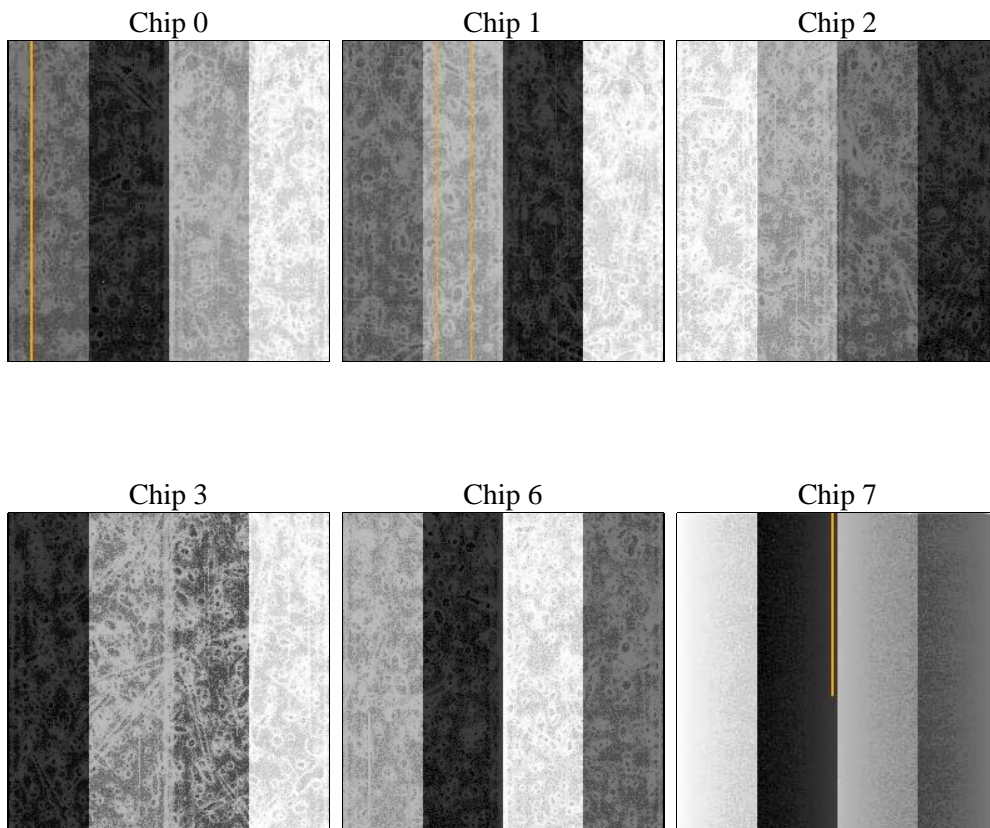
2 OBI

2.1 OBI

2.1.1 Images



2.1.2 Bias



2.1.3 Parameters

obi_num	0	Obi number	sched_exp_time	0.0	[s] Scheduled observation exposure time
ascdsver	8.4.5	Processing system revision	ontime	3536.1254772097	Sum of GTIs [s]
caldsver	4.5.1.1	 	ontime0	1480.8930157423	Sum of GTIs [s]
date	2012-08-24T07:17:00	Date and time of file creation	ontime1	1487.4161656201	Sum of GTIs [s]
revision	4	Processing version of data	ontime2	1406.7826028019	Sum of GTIs [s]
			ontime3	1403.0261055529	Sum of GTIs [s]
			ontime6	1584.7293456048	Sum of GTIs [s]
			ontime7	3536.1254772097	Sum of GTIs [s]
			l1events	1061883	Number of level 1 events

2.1.4 Events

	ccd 0	ccd 1	ccd 2	ccd 3	ccd 6	ccd 7		ccd 0	ccd 1	ccd 2	ccd 3	ccd 6	ccd 7
level 1 events	141758	143678	138643	137289	160916	339599	grade 0 events	70900	71817	69471	68768	79051	81782
rejected events	13529	14227	14583	14393	15332	20503		50%	49%	50%	50%	49%	24%
rejected %	9%	9%	10%	10%	9%	6%	grade 1 events	436	407	389	421	434	232
								0%	0%	0%	0%	0%	0%
							grade 2 events	22526	22682	21746	21311	25472	70687
								15%	15%	15%	15%	15%	20%
							grade 3 events	8161	8125	7791	7842	9135	32852
								5%	5%	5%	5%	5%	9%
							grade 4 events	8040	8015	7908	7795	8904	32454
								5%	5%	5%	5%	5%	9%
							grade 5 events	1032	1065	966	1020	1245	4611
								0%	0%	0%	0%	0%	1%
							grade 6 events	18602	18812	17442	17180	23022	101627
								13%	13%	12%	12%	14%	29%
							grade 7 events	12061	12755	12930	12952	13653	15354
								8%	8%	9%	9%	8%	4%

2.2 Compared Parameters

Parameter	Planned	Actual	Parameter	Planned	Actual
Instrument	ACIS	ACIS	Obspar format version number	7	7
Detector	ACIS-012367	ACIS-012367	Obspar file type	PREDICTED	ACTUAL
Grating	NONE	NONE	Obspar update status	NONE	UPDATED
Data mode	FAINT	FAINT	On-chip summing requested	N	N
Observation mode	SECONDARY	SECONDARY	Subarray requested	NONE	NONE
[deg] Pointing RA	0	257.3838476477654	Alternating exposures requested	N	N
[deg] Pointing Dec	0	-30.90231687055379	[s] Primary exposure time	0.000000	3.2
[deg] Pointing Roll	0.0	85.01901039953191			
[mm] SIM focus pos	-0.782348	-1.038866356238299			
[mm] SIM defocus	0	0.4944702831659975			
[mm] SIM translation stage pos	-233.592463	250.466033080201			
[mm] SIM translation stage offset	0	-0.01005468664627074			
[s] Observation start time (MET)	69038321	69038320.23148701			
Observation start date	2000-03-10T01:18:41	2000-03-10T01:18:40			
[s] Observation end time (MET)	69045621.05	69045620.281753			
Observation end date	2000-03-10T03:20:21	2000-03-10T03:20:20			
Read mode	TIMED	TIMED			

2.3 Star Slots

2.4 FID Slots

A Summary

A.1 Status

V&V Scientist	Jen Lauer
V&V Date (YYYY-MM-DD)	2012.08.27
V&V Edition	1
V&V Disposition and Status	OK
V&V Charge Time	3.5361254772097

A.2 Comments