

V&V Reference Report

L2 ASCDS Version : 7.6.10

Observation 61919 - L2 Version _e1
Chandra X-Ray Center

L2 Processing Date : Jun 8 2007

Contents

1	Front	2
2	OBI Primary	3
2.1	OBI	3
2.1.1	Images	3
2.1.2	Bias	3
2.1.3	Parameters	4
2.1.4	Events	4
2.2	Compared Parameters	5
2.3	Star Slots	6
2.4	FID Slots	6
3	OBI Secondary	6
3.1	OBI	6
3.1.1	Images	6
3.1.2	Bias	6
3.1.3	Parameters	7
3.1.4	Events	7
A	Summary	8
A.1	Status	8
A.2	Comments	8

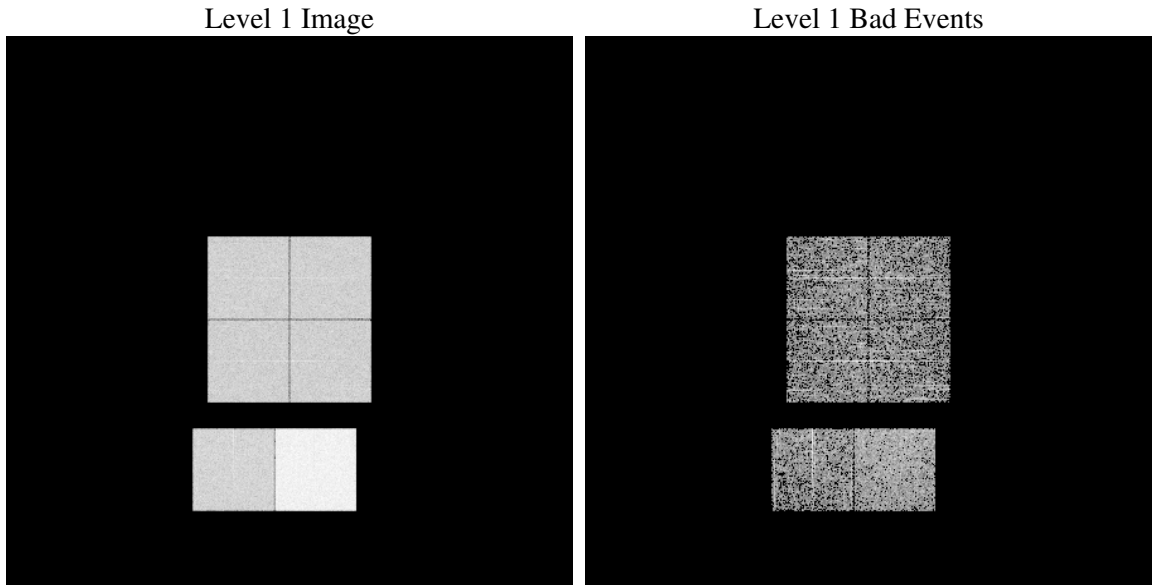
1 Front

seq_num	
obs_id	61919
title	ACIS-012367 diagnostics
observer	CHANDRA engineering request/realtime commanding
object	
dtcycle	0
cycle	P
ra_targ	0.0
dec_targ	0.0
ra_nom	265.48647791991
dec_nom	-29.713606640858
roll_nom	268.26408108291
revision	3
ontime	3422.1751276255
livetime	3387.4201964103
ontime0	1430.5281611681
ontime1	1405.6961659789
ontime2	1357.2036859393
ontime3	1369.3268059492
ontime6	1494.5990460515
ontime7	3422.1751276255
l2events	782501

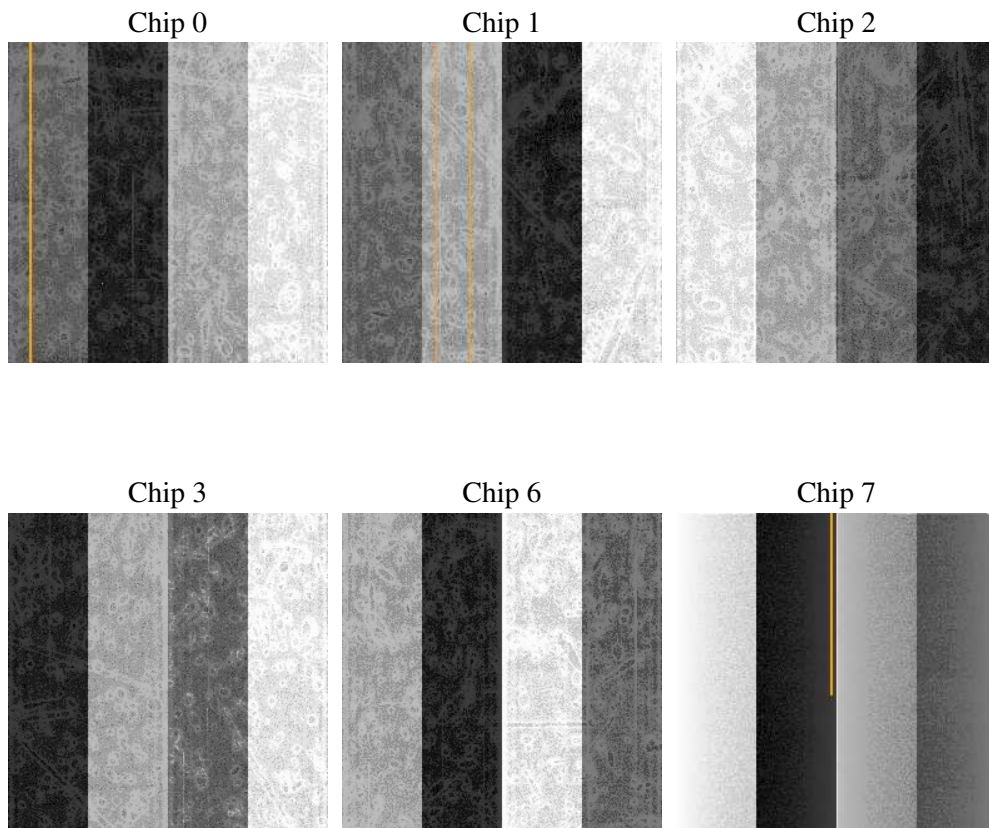
2 OBI Primary

2.1 OBI

2.1.1 Images



2.1.2 Bias



2.1.3 Parameters

obi_num	2
ascdsver	7.6.10
caldsver	3.4.0
date	2007-06-08T14:41:25
revision	3

sched_exp_time	0.0
ontime	3422.1751276255
ontime0	1430.5281611681
ontime1	1405.6961659789
ontime2	1357.2036859393
ontime3	1369.3268059492
ontime6	1494.5990460515
ontime7	3422.1751276255
l1events	878033

2.1.4 Events

	ccd 0	ccd 1	ccd 2	ccd 3	ccd 6	ccd 7
level 1 events	118314	116671	115229	115785	130503	281531
rejected events	9889	9274	9562	9690	10406	14431
rejected %	8%	7%	8%	8%	7%	5%

	ccd 0	ccd 1	ccd 2	ccd 3	ccd 6	ccd 7
grade 0 events	59846	59366	59024	59221	65678	69683
	50%	50%	51%	51%	50%	24%
grade 1 events	341	336	348	355	343	224
	0%	0%	0%	0%	0%	0%
grade 2 events	18892	18961	18351	18554	20823	59226
	15%	16%	15%	16%	15%	21%
grade 3 events	6984	6680	6711	6716	7280	27418
	5%	5%	5%	5%	5%	9%
grade 4 events	6908	6865	6583	6730	7316	27098
	5%	5%	5%	5%	5%	9%
grade 5 events	800	803	774	799	919	3450
	0%	0%	0%	0%	0%	1%
grade 6 events	15795	15525	14998	14874	19000	83675
	13%	13%	13%	12%	14%	29%
grade 7 events	8748	8135	8440	8536	9144	10757
	7%	6%	7%	7%	7%	3%

2.2 Compared Parameters

Parameter	Planned	Actual	Parameter	Planned	Actual
Instrument	ACIS	ACIS	Obspar format version number	6	6
Detector	ACIS-012367	ACIS-012367	Obspar file type	PREDICTED	ACTUAL
Grating	NONE	NONE	Obspar update status	NONE	UPDATED
Data mode	FAINT	FAINT	On-chip summing requested	N	N
Observation mode	SECONDARY	SECONDARY	Subarray requested	NONE	NONE
Pointing RA	0	265.4864779199058	Alternating exposures requested	N	Y
Pointing Dec	0	-29.71360664085796	Primary exposure time	0.000000	4
Pointing Roll	0.0	268.2640810829086	Secondary exposure time	N/A	3.2
SIM focus pos (mm)	-0.782348	-0.6828225247311905	Duty cycle	N/A	1
SIM defocus (mm)	0	0.8505141146731063			
SIM translation stage pos (mm)	-233.592463	250.466033080201			
SIM translation stage offset (mm)	0	-0.01005468664627074			
Observation start time	85660961.86399999	85660961.095727			
Observation start date	2000-09-18T10:42:42	2000-09-18T10:42:41			
Observation end time	85687618.015	85687617.24673			
Observation end date	2000-09-18T18:06:58	2000-09-18T18:06:57			
Read mode	TIMED	TIMED			

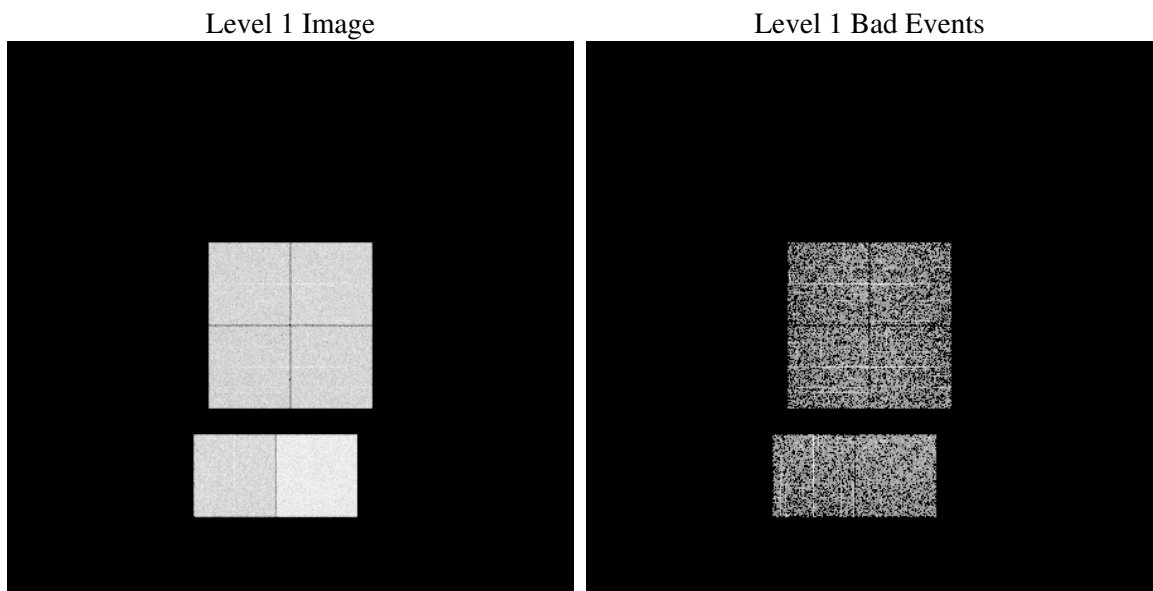
2.3 Star Slots

2.4 FID Slots

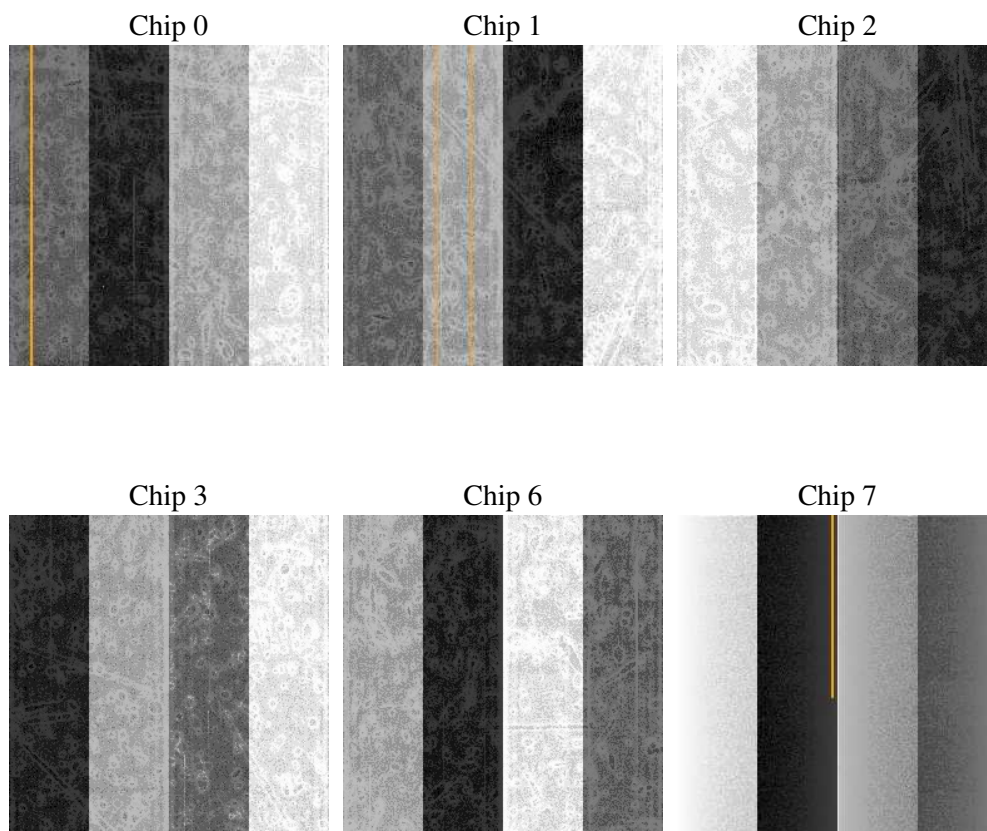
3 OBI Secondary

3.1 OBI

3.1.1 Images



3.1.2 Bias



3.1.3 Parameters

obi_num	2
ascdsver	7.6.10
caldsver	3.4.0
date	2007-06-08T14:40:56
revision	3

sched_exp_time	0.0
ontime	1711.269115448
ontime0	975.59072297812
ontime1	1020.9275972843
ontime2	917.2143175602
ontime3	961.41158691049
ontime6	1004.7223973274
ontime7	1711.269115448
l1events	556996

3.1.4 Events

	ccd 0	ccd 1	ccd 2	ccd 3	ccd 6	ccd 7
level 1 events	81295	85167	78224	81897	88750	141663
rejected events	6715	6905	7063	7103	7843	7811
rejected %	8%	8%	9%	8%	8%	5%

	ccd 0	ccd 1	ccd 2	ccd 3	ccd 6	ccd 7
grade 0 events	41323	43288	39844	42088	44247	34587
	50%	50%	50%	51%	49%	24%
grade 1 events	209	199	217	218	225	105
	0%	0%	0%	0%	0%	0%
grade 2 events	13272	13874	12526	13106	14167	29598
	16%	16%	16%	16%	15%	20%
grade 3 events	4760	5001	4571	4709	5012	13972
	5%	5%	5%	5%	5%	9%
grade 4 events	4714	4872	4457	4752	4905	13705
	5%	5%	5%	5%	5%	9%
grade 5 events	551	582	527	549	649	1744
	0%	0%	0%	0%	0%	1%
grade 6 events	10754	11471	10011	10352	12844	42255
	13%	13%	12%	12%	14%	29%
grade 7 events	5712	5880	6071	6123	6701	5697
	7%	6%	7%	7%	7%	4%

A Summary

A.1 Status

V&V Scientist	Jen Lauer
V&V Date (YYYY-MM-DD)	2007.06.08
V&V Edition	1
V&V Disposition and Status	OK
V&V Charge Time	5.13344424

A.2 Comments