

# V&V Reference Report

## L2 ASCDS Version : 8.4.5

Observation 61879 - L2 Version 3  
Chandra X-Ray Center

L2 Processing Date : Sep 2 2012

## Contents

<b>1</b>	<b>Front</b>	<b>2</b>
<b>2</b>	<b>OBI</b>	<b>3</b>
2.1	OBI . . . . .	3
2.1.1	Images . . . . .	3
2.1.2	Bias . . . . .	3
2.1.3	Parameters . . . . .	4
2.1.4	Events . . . . .	4
2.2	Compared Parameters . . . . .	5
2.3	Star Slots . . . . .	6
2.4	FID Slots . . . . .	6
<b>A</b>	<b>Summary</b>	<b>7</b>
A.1	Status . . . . .	7
A.2	Comments . . . . .	7

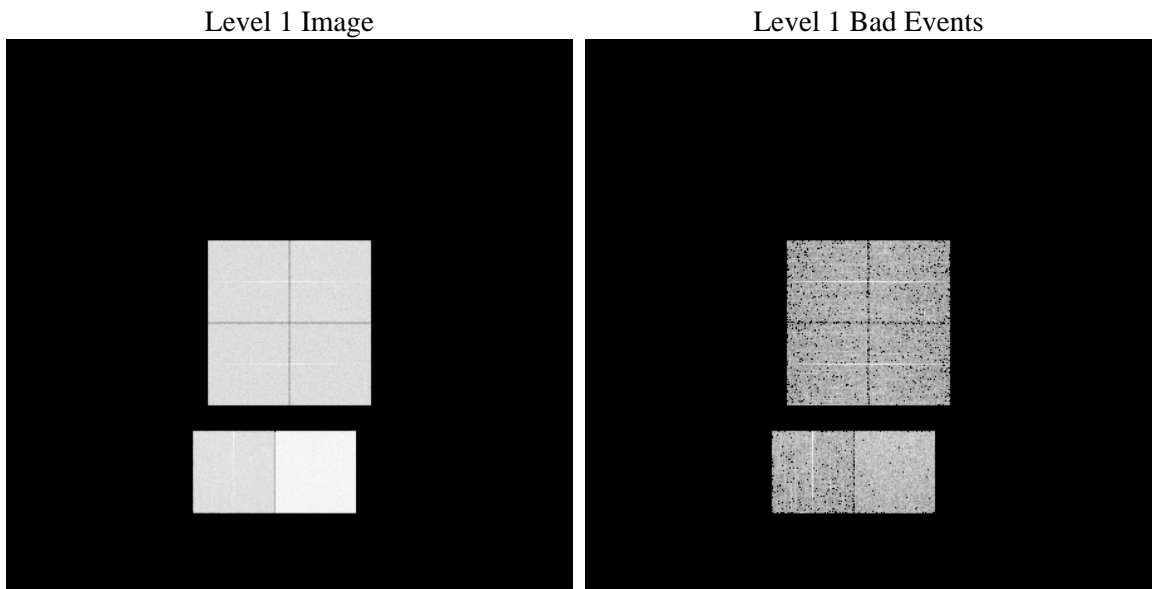
# 1 Front

seq_num	&#160	Sequence number
obs_id	61879	Observation id
title	ACIS-012367 diagnostics	Proposal title
observer	CHANDRA engineering request/realtime commanding	Principal investig
object	&#160	Source name
dtcycle	0	&#160
cycle	P	events from which exps? Prim/Second/Both
ra_targ	0.0	Observer's specified target RA [deg]
dec_targ	0.0	Observer's specified target Dec [deg]
ra_nom	341.74497492334	Nominal RA [deg]
dec_nom	-51.185398302756	Nominal Dec [deg]
roll_nom	316.74617707116	Nominal Roll [deg]
revision	3	Processing version of data
ontime	5478.8748264462	Sum of GTIs [s]
livetime	5409.4980144114	Livetime [s]
ontime0	2309.2204726487	Sum of GTIs [s]
ontime1	2365.6516892016	Sum of GTIs [s]
ontime2	2247.7226433009	Sum of GTIs [s]
ontime3	2241.0763534307	Sum of GTIs [s]
ontime6	2432.5029328614	Sum of GTIs [s]
ontime7	5478.8748264462	Sum of GTIs [s]
l2events	1253177	Number of level 2 events

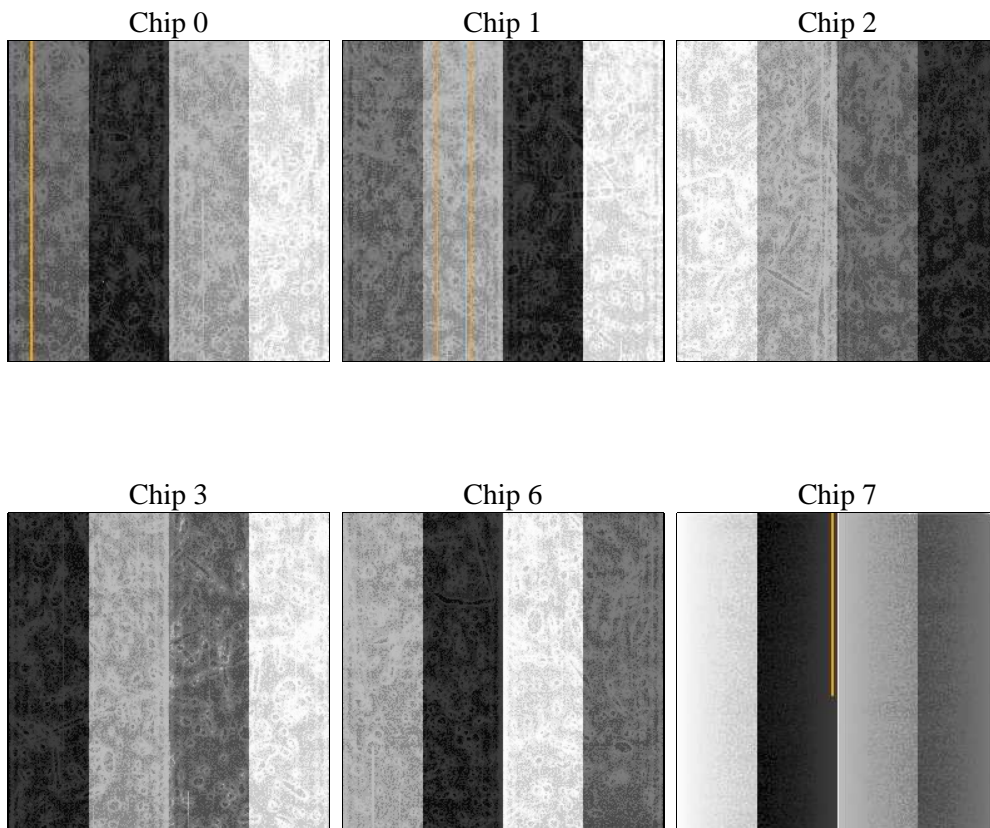
## 2 OBI

### 2.1 OBI

#### 2.1.1 Images



#### 2.1.2 Bias



### 2.1.3 Parameters

obi_num	0	Obi number	sched_exp_time	0.0	[s] Scheduled observation exposure time
ascdsver	8.4.5	Processing system revision	ontime	5478.8748264462	Sum of GTIs [s]
caldsver	4.5.1.1	&#160	ontime0	2309.2204726487	Sum of GTIs [s]
date	2012-09-02T13:11:08	Date and time of file creation	ontime1	2365.6516892016	Sum of GTIs [s]
revision	3	Processing version of data	ontime2	2247.7226433009	Sum of GTIs [s]
			ontime3	2241.0763534307	Sum of GTIs [s]
			ontime6	2432.5029328614	Sum of GTIs [s]
			ontime7	5478.8748264462	Sum of GTIs [s]
			l1events	1430081	Number of level 1 events

### 2.1.4 Events

	ccd 0	ccd 1	ccd 2	ccd 3	ccd 6	ccd 7		ccd 0	ccd 1	ccd 2	ccd 3	ccd 6	ccd 7
level 1 events	191602	196110	189582	188396	212456	451935	grade 0 events	95592	98214	95006	95048	104560	108533
rejected events	18664	18731	19278	18491	20564	28689		49%	50%	50%	50%	49%	24%
rejected %	9%	9%	10%	9%	9%	6%	grade 1 events	495	523	488	515	536	283
								0%	0%	0%	0%	0%	0%
							grade 2 events	30375	31240	29817	29998	33649	93569
								15%	15%	15%	15%	15%	20%
							grade 3 events	11110	11439	10845	10719	11614	43278
								5%	5%	5%	5%	5%	9%
							grade 4 events	11028	11145	10657	10765	11727	43202
								5%	5%	5%	5%	5%	9%
							grade 5 events	1377	1420	1365	1425	1561	6314
								0%	0%	0%	0%	0%	1%
							grade 6 events	25081	25598	23979	23629	30342	134922
								13%	13%	12%	12%	14%	29%
							grade 7 events	16544	16531	17425	16297	18467	21834
								8%	8%	9%	8%	8%	4%

## 2.2 Compared Parameters

Parameter	Planned	Actual
Instrument	ACIS	ACIS
Detector	ACIS-012367	ACIS-012367
Grating	NONE	NONE
Data mode	FAINT	FAINT
Observation mode	SECONDARY	SECONDARY
[deg] Pointing RA	0	341.7449749233393
[deg] Pointing Dec	0	-51.18539830275589
[deg] Pointing Roll	0.0	316.7461770711558
[mm] SIM focus pos	-0.782348	-0.7809083437167272
[mm] SIM defocus	0	0.7524282956875696
[mm] SIM translation stage pos	-233.592463	250.466033080201
[mm] SIM translation stage offset	0	-0.01005468664627074
[s] Observation start time (MET)	88173548.558937	88173547.79048
Observation start date	2000-10-17T12:39:09	2000-10-17T12:39:07
[s] Observation end time (MET)	88221858.86076	88221858.092307
Observation end date	2000-10-18T02:04:19	2000-10-18T02:04:18
Read mode	TIMED	TIMED

Parameter	Planned	Actual
Obspar format version number	7	7
Obspar file type	PREDICTED	ACTUAL
Obspar update status	NONE	UPDATED
On-chip summing requested	N	N
Subarray requested	NONE	NONE
Alternating exposures requested	N	N
[s] Primary exposure time	3.2	3.2

## 2.3 Star Slots

## 2.4 FID Slots

## **A Summary**

### **A.1 Status**

V&V Scientist	Jen Lauer
V&V Date (YYYY-MM-DD)	2012.09.10
V&V Edition	1
V&V Disposition and Status	OK
V&V Charge Time	5.4788748264462

### **A.2 Comments**