

# V&V Reference Report

## L2 ASCDS Version : 7.6.9

Observation 61769 - L2 Version 001  
Chandra X-Ray Center

L2 Processing Date : Nov 4 2006

## Contents

<b>1</b>	<b>Front</b>	<b>2</b>
<b>2</b>	<b>OBI</b>	<b>3</b>
2.1	OBI . . . . .	3
2.1.1	Images . . . . .	3
2.1.2	Bias . . . . .	3
2.1.3	Parameters . . . . .	4
2.1.4	Events . . . . .	4
2.2	Compared Parameters . . . . .	5
2.3	Aspect . . . . .	6
2.4	Star Slots . . . . .	8
2.5	FID Slots . . . . .	8
<b>A</b>	<b>Summary</b>	<b>9</b>
A.1	Status . . . . .	9
A.2	Comments . . . . .	9

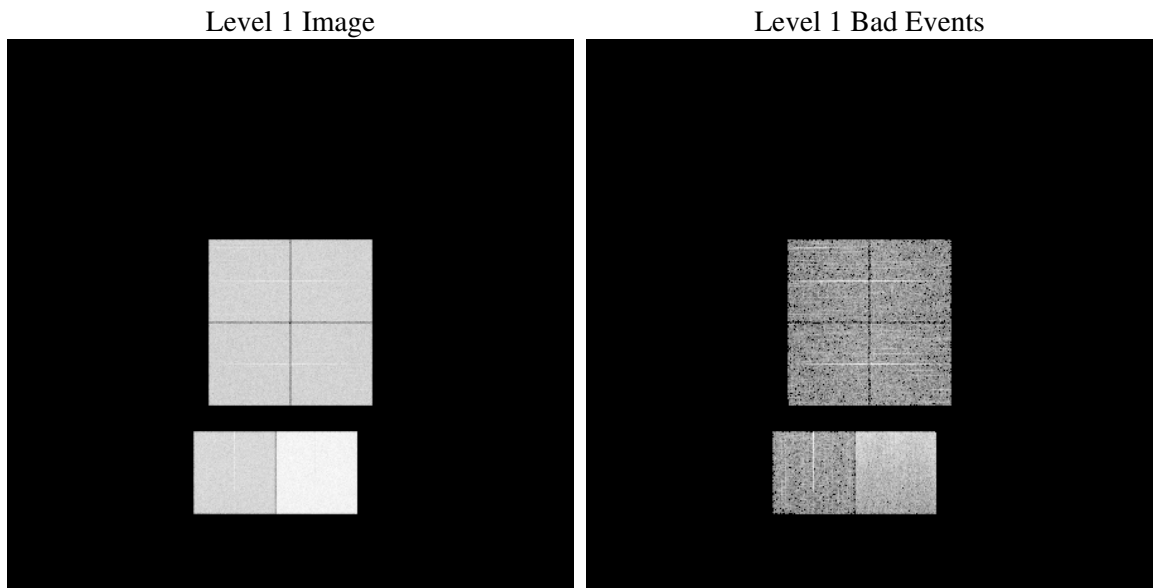
# 1 Front

seq_num	&#160
obs_id	61769
title	ACIS-012367 diagnostics
observer	CHANDRA engineering request/realtime commanding
object	&#160
dtcycle	0
cycle	P
ra_targ	0.0
dec_targ	0.0
ra_nom	353.93211436076
dec_nom	32.390647380421
roll_nom	308.41253480025
revision	3
ontime	6324.8422781825
livetime	6244.7533168934
ontime0	2685.2123820335
ontime1	2720.9330805689
ontime2	2549.088911742
ontime3	2604.1325307935
ontime6	2837.691952318
ontime7	6324.8422781825
l2events	1338455

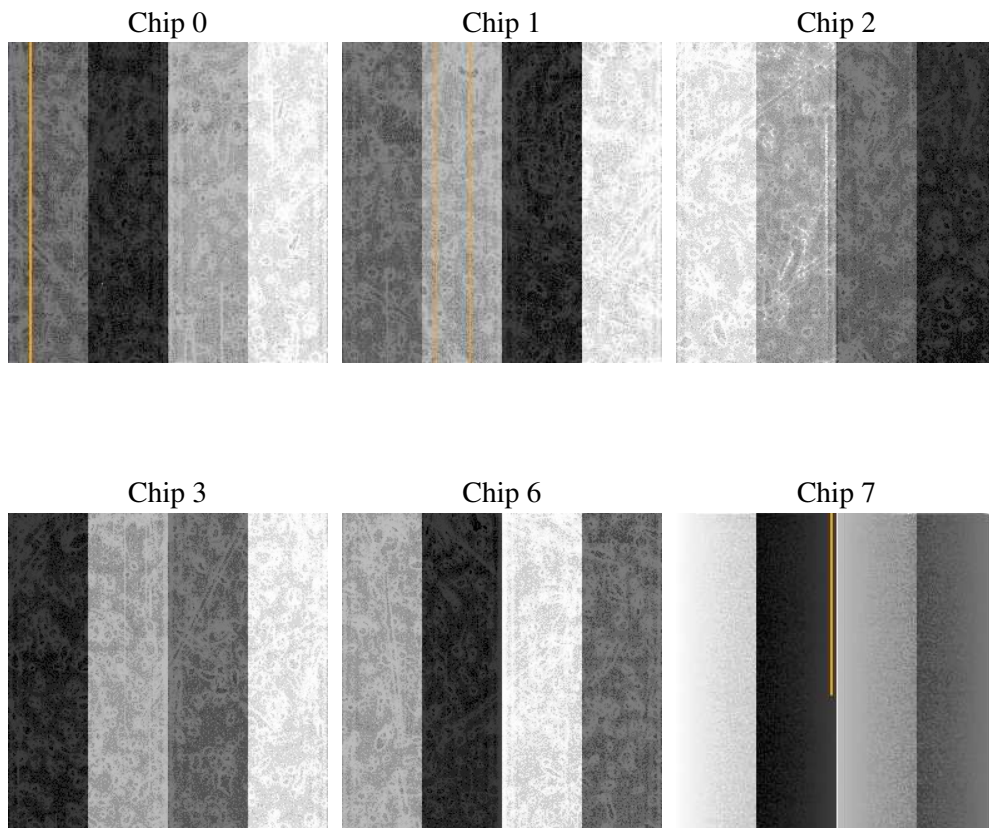
## 2 OBI

### 2.1 OBI

#### 2.1.1 Images



#### 2.1.2 Bias



### 2.1.3 Parameters

obi_num	1
ascdsver	7.6.9
caldbver	3.2.3
date	2006-11-04T08:00:15
revision	3

sched_exp_time	0.0
ontime	6362.100697428
ontime0	2696.5428801477
ontime1	2735.4351605624
ontime2	2560.4194098562
ontime3	2621.9987707734
ontime6	2855.3529922962
ontime7	6362.100697428
l1events	1548243

### 2.1.4 Events

	ccd 0	ccd 1	ccd 2	ccd 3	ccd 6	ccd 7
level 1 events	208231	210648	200540	206202	232075	490547
rejected events	20300	19928	19754	21774	22430	48444
rejected %	9%	9%	9%	10%	9%	9%

	ccd 0	ccd 1	ccd 2	ccd 3	ccd 6	ccd 7
grade 0 events	104218	105374	100795	104006	115400	84843
	50%	50%	50%	50%	49%	17%
grade 1 events	541	562	526	527	560	208
	0%	0%	0%	0%	0%	0%
grade 2 events	33219	33939	31763	32550	36127	131747
	15%	16%	15%	15%	15%	26%
grade 3 events	11907	12140	11359	11648	13126	33853
	5%	5%	5%	5%	5%	6%
grade 4 events	11899	12285	11489	11841	12838	33465
	5%	5%	5%	5%	5%	6%
grade 5 events	1515	1573	1446	1501	1738	6871
	0%	0%	0%	0%	0%	1%
grade 6 events	27330	27939	26067	25755	33345	160681
	13%	13%	12%	12%	14%	32%
grade 7 events	17602	16836	17095	18374	18941	38879
	8%	7%	8%	8%	8%	7%

## 2.2 Compared Parameters

Parameter	Planned	Actual	Parameter	Planned	Actual
Instrument	ACIS	ACIS	Obspar format version number	6	6
Detector	ACIS-012367	ACIS-012367	Obspar file type	PREDICTED	ACTUAL
Grating	NONE	NONE	Obspar update status	NONE	UPDATED
Data mode	FAINT	FAINT	On-chip summing requested	N	N
Observation mode	SECONDARY	SECONDARY	Subarray requested	NONE	NONE
Pointing RA	0	353.9321143607557	Alternating exposures requested	N	N
Pointing Dec	0	32.39064738042144	Primary exposure time	0.000000	3.2
Pointing Roll	0.0	308.4125348002465			
SIM focus pos (mm)	-0.782348	-0.6828225247311905			
SIM defocus (mm)	0	0.8505141146731063			
SIM translation stage pos (mm)	-233.592463	250.466033080201			
SIM translation stage offset (mm)	0	-0.01005468664627074			
Observation start time	96203743.265	96203742.49668001			
Observation start date	2001-01-18T11:15:43	2001-01-18T11:15:42			
Observation end time	96225526.566	96225525.797517			
Observation end date	2001-01-18T17:18:47	2001-01-18T17:18:45			
Read mode	TIMED	TIMED			

## 2.3 Aspect



## **2.4 Star Slots**

## **2.5 FID Slots**



## A Summary

### A.1 Status

V&V Scientist	Jen Lauer
V&V Date (YYYY-MM-DD)	2006.11.06
V&V Edition	1
V&V Disposition and Status	OK
V&V Charge Time	6.32484227

### A.2 Comments