

V&V Reference Report

L2 ASCDS Version : 8.4.5

Observation 61719 - L2 Version 3
Chandra X-Ray Center

L2 Processing Date : Sep 12 2012

Contents

| | | |
|----------|-------------------------------|----------|
| 1 | Front | 2 |
| 2 | OBI | 3 |
| 2.1 | OBI | 3 |
| 2.1.1 | Images | 3 |
| 2.1.2 | Bias | 3 |
| 2.1.3 | Parameters | 4 |
| 2.1.4 | Events | 4 |
| 2.2 | Compared Parameters | 5 |
| 2.3 | Star Slots | 6 |
| 2.4 | FID Slots | 6 |
| A | Summary | 7 |
| A.1 | Status | 7 |
| A.2 | Comments | 7 |

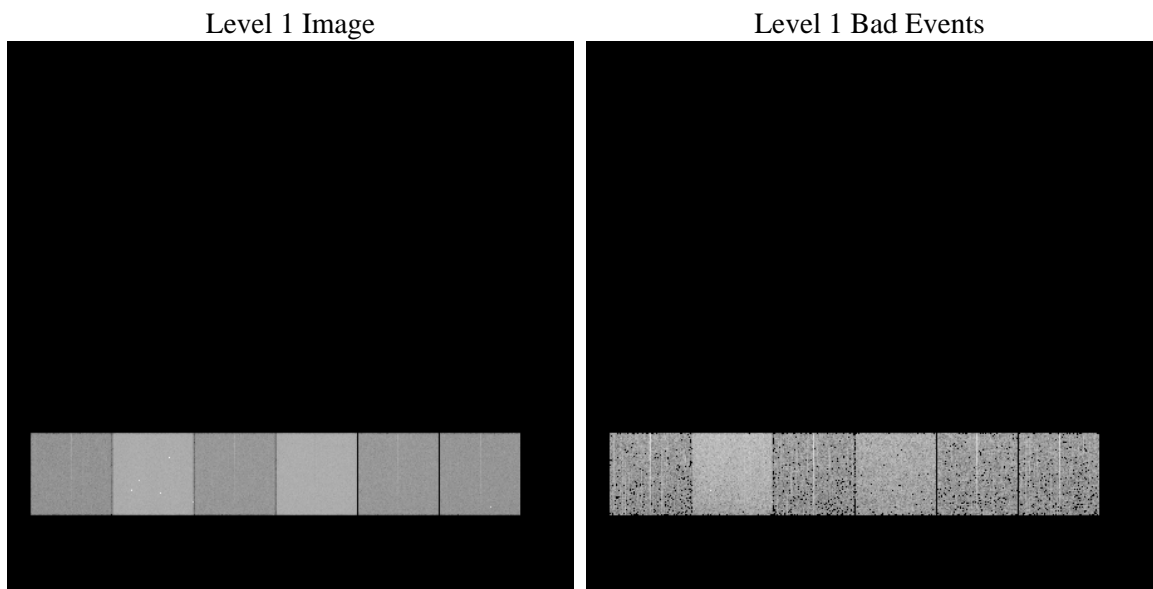
1 Front

| | | |
|----------|---|---|
| seq_num | | Sequence number |
| obs_id | 61719 | Observation id |
| title | ACIS-456789 diagnostics | Proposal title |
| observer | CHANDRA engineering request/realtime commanding | Principal investig |
| object | | Source name |
| dtcycle | 0 | |
| cycle | P | events from which exps? Prim/Second/Both |
| ra_targ | 0.0 | Observer's specified target RA [deg] |
| dec_targ | 0.0 | Observer's specified target Dec [deg] |
| ra_nom | 264.98413002998 | Nominal RA [deg] |
| dec_nom | 50.026836354737 | Nominal Dec [deg] |
| roll_nom | 78.12705807199 | Nominal Roll [deg] |
| revision | 3 | Processing version of data |
| ontime | 5084.0950834751 | Sum of GTIs [s] |
| livetime | 5019.7172102536 | Livetime [s] |
| ontime4 | 1988.8115781844 | Sum of GTIs [s] |
| ontime5 | 5417.8728790879 | Sum of GTIs [s] |
| ontime6 | 2215.7251384556 | Sum of GTIs [s] |
| ontime7 | 5084.0950834751 | Sum of GTIs [s] |
| ontime8 | 2255.7617705911 | Sum of GTIs [s] |
| ontime9 | 2132.6024403423 | Sum of GTIs [s] |
| l2events | 1225804 | Number of level 2 events |

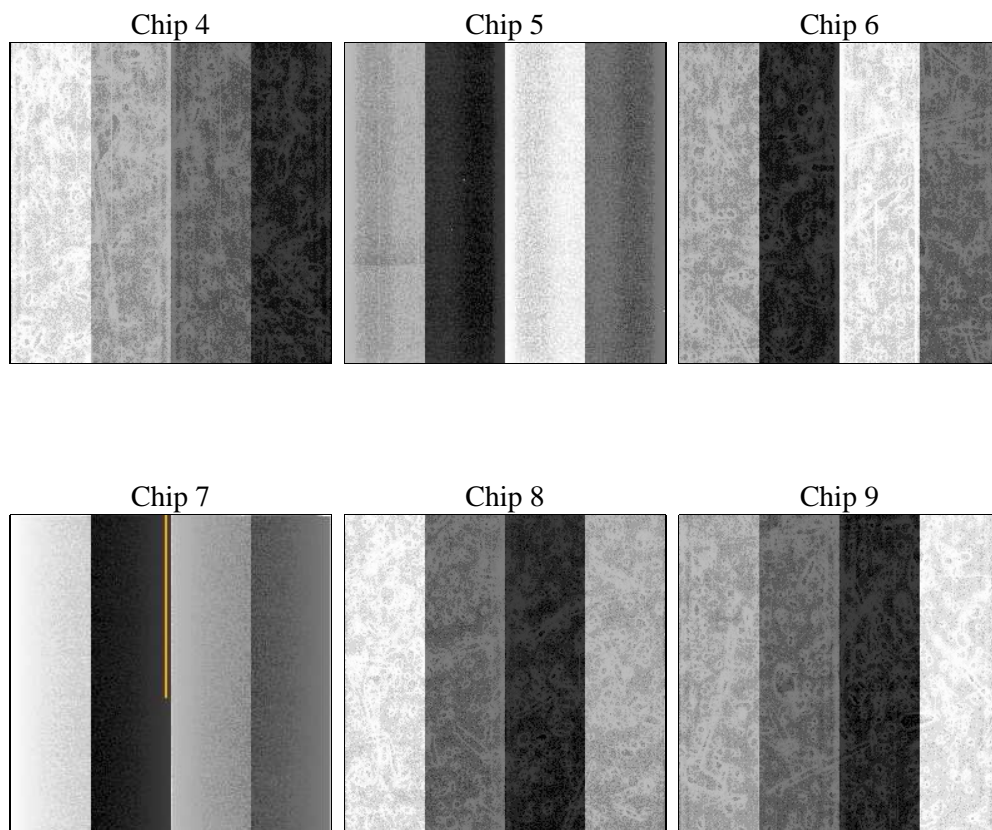
2 OBI

2.1 OBI

2.1.1 Images



2.1.2 Bias



2.1.3 Parameters

| | | | | | |
|----------|---------------------|--------------------------------|----------------|-----------------|---|
| obi_num | 0 | Obi number | sched_exp_time | 0.0 | [s] Scheduled observation exposure time |
| ascdsver | 8.4.5 | Processing system revision | ontime | 5084.0950834751 | Sum of GTIs [s] |
| caldbver | 4.5.1.1 | | ontime4 | 1988.8115781844 | Sum of GTIs [s] |
| date | 2012-09-12T07:02:09 | Date and time of file creation | ontime5 | 5417.8728790879 | Sum of GTIs [s] |
| revision | 3 | Processing version of data | ontime6 | 2215.7251384556 | Sum of GTIs [s] |
| | | | ontime7 | 5084.0950834751 | Sum of GTIs [s] |
| | | | ontime8 | 2255.7617705911 | Sum of GTIs [s] |
| | | | ontime9 | 2132.6024403423 | Sum of GTIs [s] |
| | | | l1events | 1424290 | Number of level 1 events |

2.1.4 Events

| | ccd 4 | ccd 5 | ccd 6 | ccd 7 | ccd 8 | ccd 9 | | ccd 4 | ccd 5 | ccd 6 | ccd 7 | ccd 8 | ccd 9 |
|-----------------|--------|--------|--------|--------|--------|--------|----------------|-------|--------|-------|--------|-------|-------|
| level 1 events | 148731 | 373455 | 176041 | 382705 | 179038 | 164320 | grade 0 events | 73679 | 82029 | 86450 | 90612 | 88576 | 80814 |
| rejected events | 18870 | 39922 | 17666 | 26692 | 18893 | 17751 | | 49% | 21% | 49% | 23% | 49% | 49% |
| rejected % | 12% | 10% | 10% | 6% | 10% | 10% | grade 1 events | 431 | 424 | 430 | 245 | 409 | 436 |
| | | | | | | | | 0% | 0% | 0% | 0% | 0% | 0% |
| | | | | | | | grade 2 events | 22893 | 120608 | 27372 | 78636 | 28234 | 25770 |
| | | | | | | | | 15% | 32% | 15% | 20% | 15% | 15% |
| | | | | | | | grade 3 events | 7987 | 20782 | 9706 | 36708 | 10074 | 9121 |
| | | | | | | | | 5% | 5% | 5% | 9% | 5% | 5% |
| | | | | | | | grade 4 events | 7998 | 20469 | 9889 | 36142 | 10023 | 8867 |
| | | | | | | | | 5% | 5% | 5% | 9% | 5% | 5% |
| | | | | | | | grade 5 events | 1175 | 7747 | 1371 | 5812 | 1547 | 1366 |
| | | | | | | | | 0% | 2% | 0% | 1% | 0% | 0% |
| | | | | | | | grade 6 events | 17304 | 89645 | 24958 | 113915 | 23238 | 21997 |
| | | | | | | | | 11% | 24% | 14% | 29% | 12% | 13% |
| | | | | | | | grade 7 events | 17264 | 31751 | 15865 | 20635 | 16937 | 15949 |
| | | | | | | | | 11% | 8% | 9% | 5% | 9% | 9% |

2.2 Compared Parameters

| Parameter | Planned | Actual | Parameter | Planned | Actual |
|-----------------------------------|---------------------|----------------------|---------------------------------|-----------|---------|
| Instrument | ACIS | ACIS | Obspar format version number | 7 | 7 |
| Detector | ACIS-456789 | ACIS-456789 | Obspar file type | PREDICTED | ACTUAL |
| Grating | NONE | NONE | Obspar update status | NONE | UPDATED |
| Data mode | FAINT | FAINT | On-chip summing requested | N | N |
| Observation mode | SECONDARY | SECONDARY | Subarray requested | NONE | NONE |
| [deg] Pointing RA | 0 | 264.984130029977 | Alternating exposures requested | N | N |
| [deg] Pointing Dec | 0 | 50.02683635473738 | [s] Primary exposure time | 0.000000 | 3.2 |
| [deg] Pointing Roll | 0.0 | 78.12705807199004 | | | |
| [mm] SIM focus pos | -0.684267 | -0.7809083437167272 | | | |
| [mm] SIM defocus | 0 | 0.7524282956875696 | | | |
| [mm] SIM translation stage pos | -190.132523 | 250.466033080201 | | | |
| [mm] SIM translation stage offset | 0 | -0.01005468664627074 | | | |
| [s] Observation start time (MET) | 100055810.264 | 100055809.4951 | | | |
| Observation start date | 2001-03-04T01:16:50 | 2001-03-04T01:16:49 | | | |
| [s] Observation end time (MET) | 100067195.964 | 100067195.19554 | | | |
| Observation end date | 2001-03-04T04:26:36 | 2001-03-04T04:26:35 | | | |
| Read mode | TIMED | TIMED | | | |

2.3 Star Slots

2.4 FID Slots

A Summary

A.1 Status

| | |
|----------------------------|-----------------|
| V&V Scientist | Jen Lauer |
| V&V Date (YYYY-MM-DD) | 2012.09.18 |
| V&V Edition | 1 |
| V&V Disposition and Status | OK |
| V&V Charge Time | 5.0840950834751 |

A.2 Comments