

# V&V Reference Report

## L2 ASCDS Version : 7.6.9

Observation 61629 - L2 Version 001  
Chandra X-Ray Center

L2 Processing Date : Nov 21 2006

## Contents

<b>1</b>	<b>Front</b>	<b>2</b>
<b>2</b>	<b>OBI</b>	<b>3</b>
2.1	OBI . . . . .	3
2.1.1	Images . . . . .	3
2.1.2	Bias . . . . .	3
2.1.3	Parameters . . . . .	4
2.1.4	Events . . . . .	4
2.2	Compared Parameters . . . . .	5
2.3	Aspect . . . . .	6
2.4	Star Slots . . . . .	8
2.5	FID Slots . . . . .	8
<b>A</b>	<b>Summary</b>	<b>9</b>
A.1	Status . . . . .	9
A.2	Comments . . . . .	9

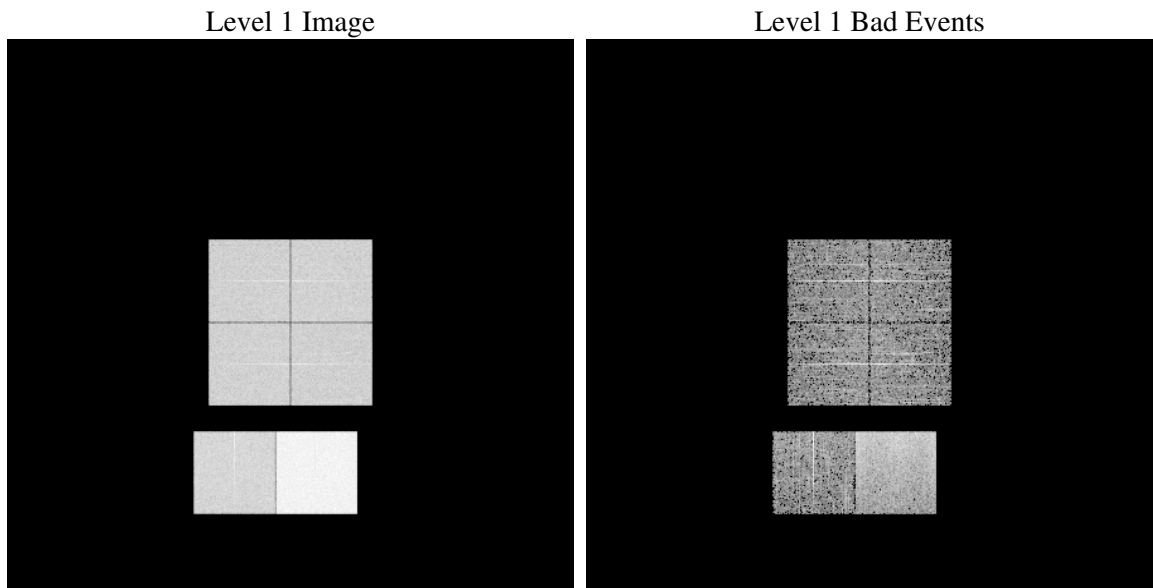
# 1 Front

seq_num	&#160
obs_id	61629
title	ACIS-012367 diagnostics
observer	CHANDRA engineering request/realtime commanding
object	&#160
dtcycle	0
cycle	P
ra_targ	0.0
dec_targ	0.0
ra_nom	224.98473828668
dec_nom	-0.024302689103772
roll_nom	205.10924177943
revision	2
ontime	5471.9388842881
livetime	5402.6498993292
ontime0	2234.1936756521
ontime1	2256.880586803
ontime2	2213.1074007303
ontime3	2144.8814805895
ontime6	2427.056691438
ontime7	5471.9388842881
l2events	1050119

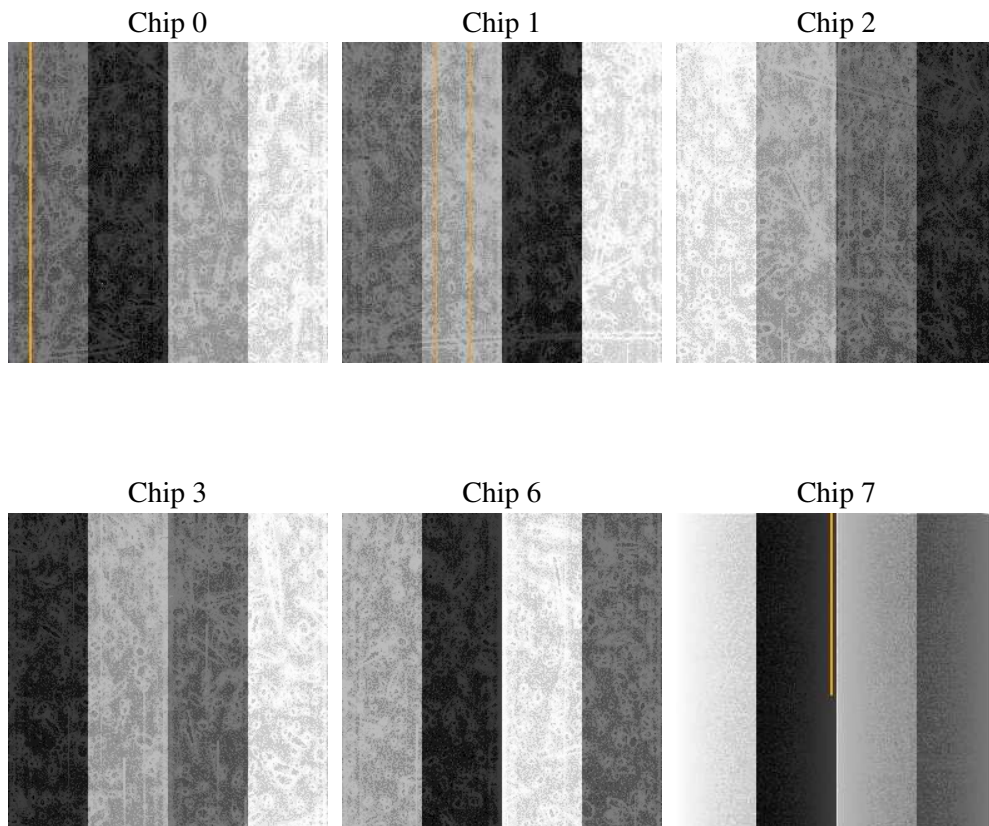
## 2 OBI

### 2.1 OBI

#### 2.1.1 Images



#### 2.1.2 Bias



### 2.1.3 Parameters

obi_num	0
ascdsver	7.6.9
caldsver	3.2.4
date	2006-11-21T23:08:16
revision	2

sched_exp_time	0.0
ontime	5487.0244309306
ontime0	2239.5562518239
ontime1	2262.2431629747
ontime2	2216.8687626272
ontime3	2152.0480424762
ontime6	2434.018053323
ontime7	5487.0244309306
l1events	1227083

### 2.1.4 Events

	ccd 0	ccd 1	ccd 2	ccd 3	ccd 6	ccd 7
level 1 events	161212	164010	162732	158727	184871	395531
rejected events	17083	17470	17776	18191	19649	41852
rejected %	10%	10%	10%	11%	10%	10%

	ccd 0	ccd 1	ccd 2	ccd 3	ccd 6	ccd 7
grade 0 events	79598	81196	81147	78921	90920	66554
	49%	49%	49%	49%	49%	16%
grade 1 events	414	386	382	400	458	147
	0%	0%	0%	0%	0%	0%
grade 2 events	25580	26118	25540	24783	28482	106219
	15%	15%	15%	15%	15%	26%
grade 3 events	9071	9272	8941	8828	10195	27190
	5%	5%	5%	5%	5%	6%
grade 4 events	9113	9139	8839	9016	10163	26657
	5%	5%	5%	5%	5%	6%
grade 5 events	1261	1307	1140	1223	1445	5813
	0%	0%	0%	0%	0%	1%
grade 6 events	20988	21012	20684	19419	25912	127820
	13%	12%	12%	12%	14%	32%
grade 7 events	15187	15580	16059	16137	17296	35131
	9%	9%	9%	10%	9%	8%

## 2.2 Compared Parameters

Parameter	Planned	Actual	Parameter	Planned	Actual
Instrument	ACIS	ACIS	Obspar format version number	6	6
Detector	ACIS-012367	ACIS-012367	Obspar file type	PREDICTED	ACTUAL
Grating	NONE	NONE	Obspar update status	NONE	UPDATED
Data mode	FAINT	FAINT	On-chip summing requested	N	N
Observation mode	SECONDARY	SECONDARY	Subarray requested	NONE	NONE
Pointing RA	0	224.984738286677	Alternating exposures requested	N	N
Pointing Dec	0	-0.02430268910377201	Primary exposure time	0.000000	3.2
Pointing Roll	0.0	205.1092417794314			
SIM focus pos (mm)	-0.782348	-0.7809083437167272			
SIM defocus (mm)	0	0.7524282956875696			
SIM translation stage pos (mm)	-233.592463	250.466033080201			
SIM translation stage offset (mm)	0	-0.01005468664627074			
Observation start time	106502297.913	106502297.1449			
Observation start date	2001-05-17T15:58:18	2001-05-17T15:58:17			
Observation end time	106510696.764	106510695.99523			
Observation end date	2001-05-17T18:18:17	2001-05-17T18:18:15			
Read mode	TIMED	TIMED			

## 2.3 Aspect



## **2.4 Star Slots**

## **2.5 FID Slots**



## A Summary

### A.1 Status

V&V Scientist	Jen Lauer
V&V Date (YYYY-MM-DD)	2006.11.22
V&V Edition	1
V&V Disposition and Status	OK
V&V Charge Time	5.47193888

### A.2 Comments