

V&V Reference Report

L2 ASCDS Version : 8.5.1.1

Observation 6159 - L2 Version 3
Chandra X-Ray Center

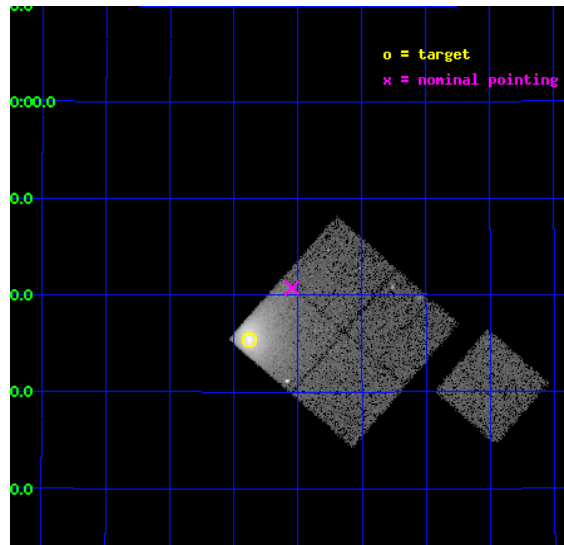
L2 Processing Date : Dec 20 2012

Contents

1	Front	2
2	OBI	3
2.1	OBI	3
2.1.1	Images	3
2.1.2	Bias	3
2.1.3	Parameters	4
2.1.4	Events	4
2.2	Compared Parameters	5
2.3	Aspect	6
2.4	Star Slots	9
2.4.1	Slot 3	9
2.4.2	Slot 4	10
2.4.3	Slot 5	11
2.4.4	Slot 6	12
2.4.5	Slot 7	13
2.5	FID Slots	14
2.5.1	Slot 0	14
2.5.2	Slot 1	15
2.5.3	Slot 2	16
A	Summary	17
A.1	Status	17
A.2	Comments	17

1 Front

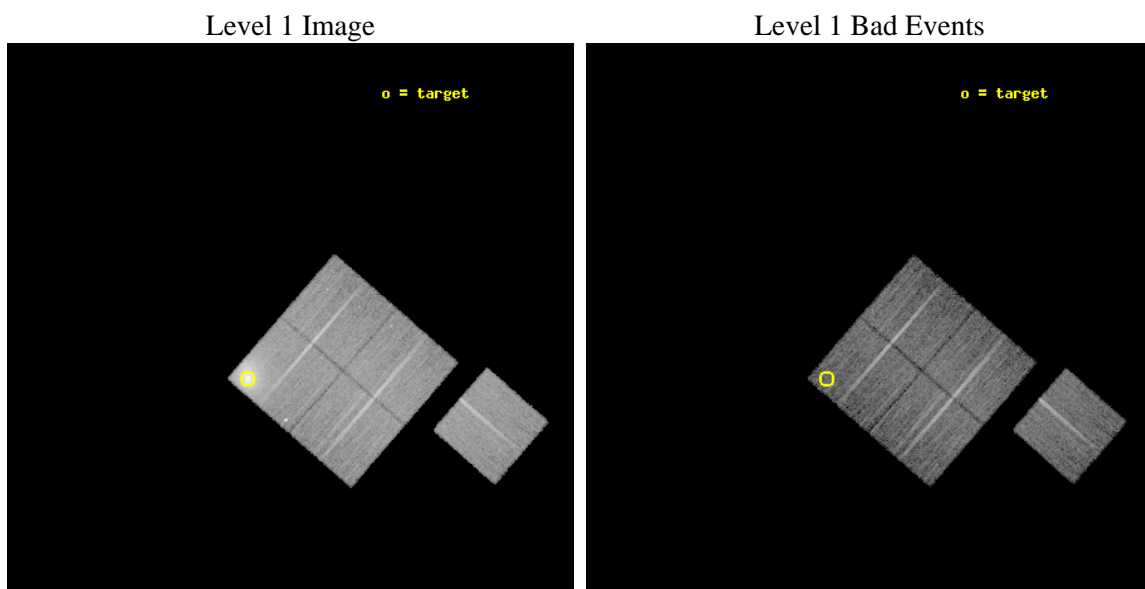
seq_num	890031	Sequence number
obs_id	6159	Observation id
title	Monitoring the Spatial Variation of the ACIS Contaminant with Abell 1795	Proposal title
observer	Dr. CXC Calibration	Principal investigator
object	A1795	Source name
dtcycle	0	
cycle	P	events from which exps? Prim/Second/Both
ra_targ	207.219583	Observer's specified target RA [deg]
dec_targ	26.590833	Observer's specified target Dec [deg]
ra_nom	207.13693222997	Nominal RA [deg]
dec_nom	26.679306161506	Nominal Dec [deg]
roll_nom	130.98122896853	Nominal Roll [deg]
revision	3	Processing version of data
ontime	15047.358980775	Sum of GTIs [s]
livetime	14850.754157987	Livetime [s]
ontime0	15047.358990788	Sum of GTIs [s]
ontime1	15047.358980775	Sum of GTIs [s]
ontime2	15047.358970881	Sum of GTIs [s]
ontime3	15050.499971032	Sum of GTIs [s]
ontime6	15050.499971032	Sum of GTIs [s]
l2events	119892	Number of level 2 events



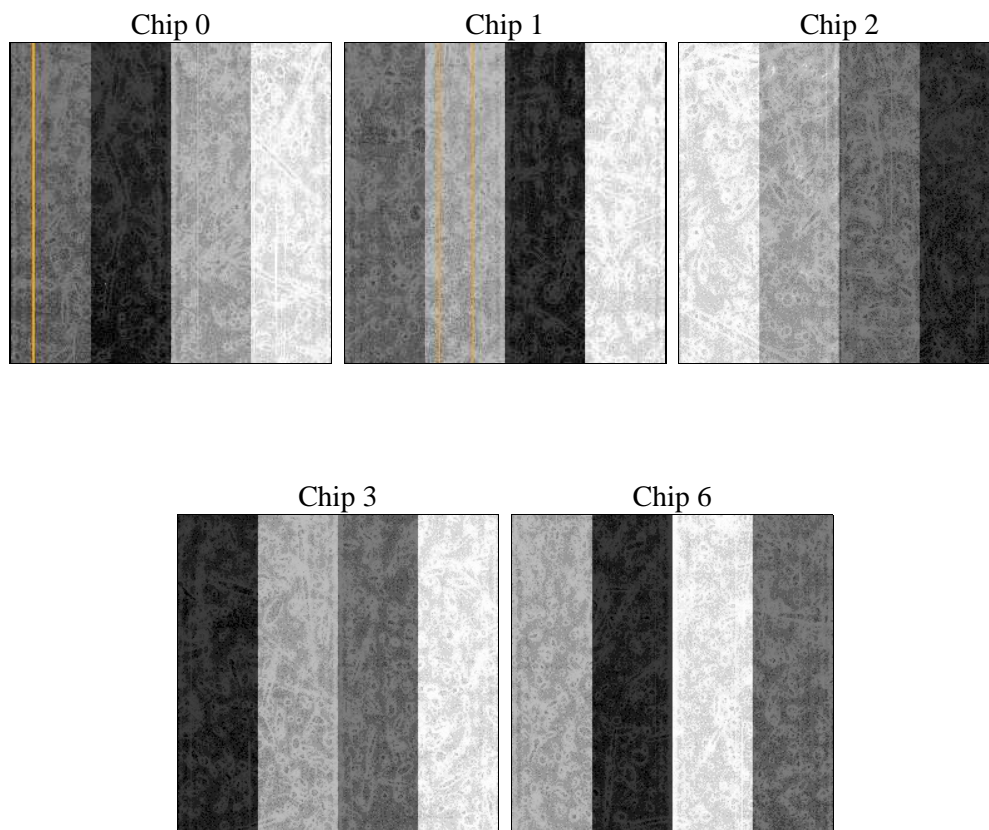
2 OBI

2.1 OBI

2.1.1 Images



2.1.2 Bias



2.1.3 Parameters

obi_num	0	Obi number	sched_exp_time	15000.000000	[s] Scheduled observation exposure time
ascdsver	8.5.1.1	Processing system revision	ontime	15047.358980775	Sum of GTIs [s]
caldbver	4.5.5	 	ontime0	15047.358990788	Sum of GTIs [s]
date	2012-12-20T19:10:28	Date and time of file creation	ontime1	15047.358980775	Sum of GTIs [s]
revision	3	Processing version of data	ontime2	15047.358970881	Sum of GTIs [s]
			ontime3	15050.499971032	Sum of GTIs [s]
			ontime6	15050.499971032	Sum of GTIs [s]
			l1events	540600	Number of level 1 events

2.1.4 Events

	ccd 0	ccd 1	ccd 2	ccd 3	ccd 6
level 1 events	88002	168318	95966	94676	93638
rejected events	76872	77310	86307	84719	84499
rejected %	87%	45%	89%	89%	90%

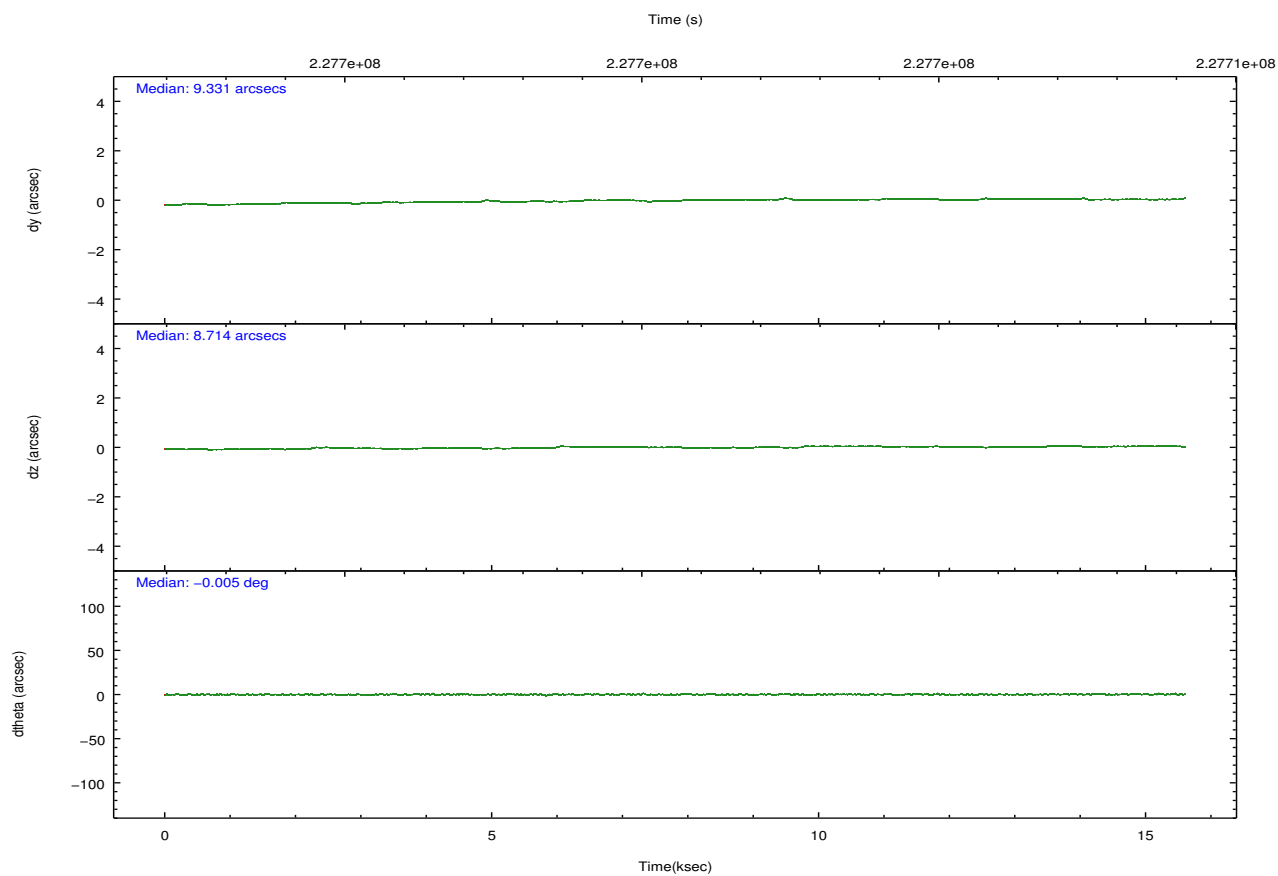
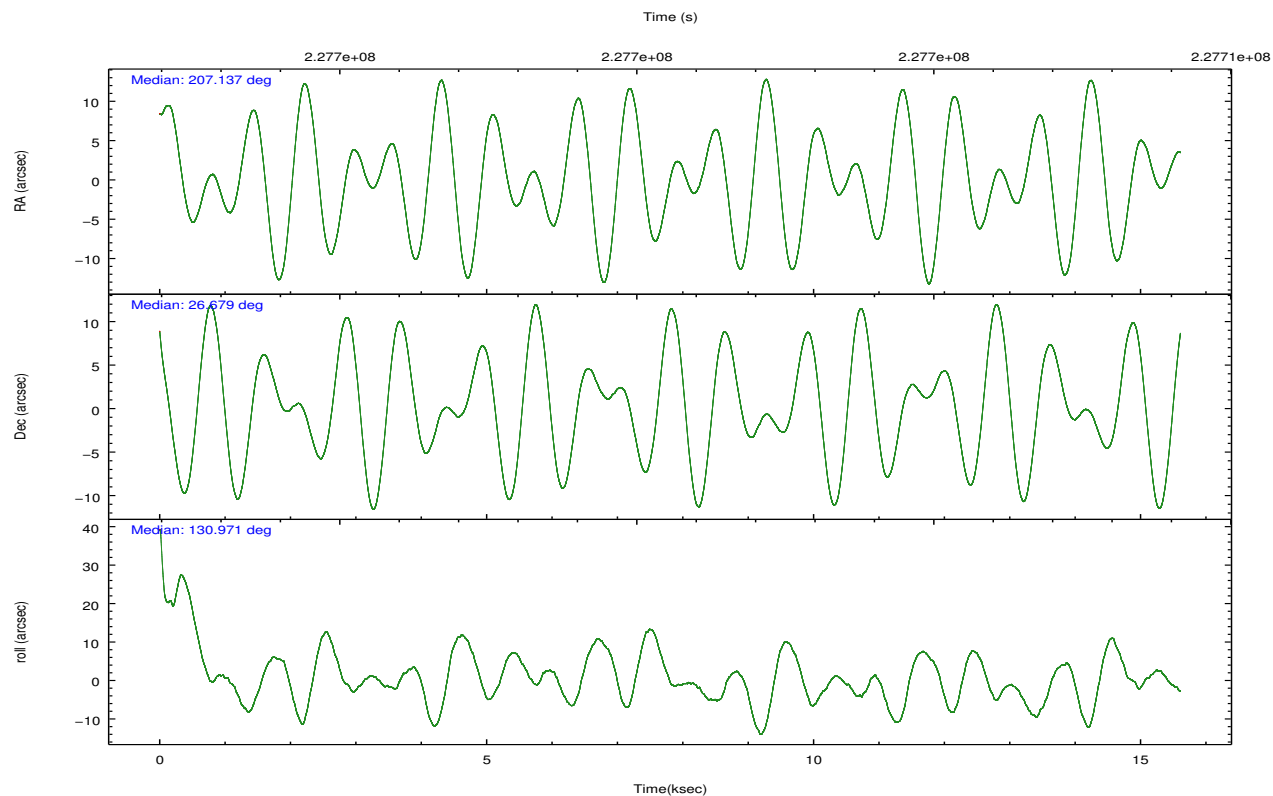
	ccd 0	ccd 1	ccd 2	ccd 3	ccd 6
grade 0 events	4692	68567	3637	4086	3125
	5%	40%	3%	4%	3%
grade 1 events	46	332	61	52	36
	0%	0%	0%	0%	0%
grade 2 events	2320	10617	2197	1955	2011
	2%	6%	2%	2%	2%
grade 3 events	1187	3787	1017	1086	1051
	1%	2%	1%	1%	1%
grade 4 events	1049	3755	1000	1076	993
	1%	2%	1%	1%	1%
grade 5 events	3281	3915	3126	3753	3605
	3%	2%	3%	3%	3%
grade 6 events	1886	4296	1810	1756	1963
	2%	2%	1%	1%	2%
grade 7 events	73541	73049	83118	80912	80854
	83%	43%	86%	85%	86%

2.2 Compared Parameters

Parameter	Planned	Actual
Instrument	ACIS	ACIS
Detector	ACIS-01236	ACIS-01236
Grating	NONE	NONE
Data mode	VFAINT	VFAINT
Observation mode	POINTING	POINTING
[deg] Pointing RA	207.165923	207.1369322299674
[deg] Pointing Dec	26.670502	26.67930616150621
[deg] Pointing Roll	130.759506	130.9812289685254
[s] Window start time (MET)	218246464.184000	218246464.184000
[s] Window stop time (MET)	228614464.184000	228614464.184000
[mm] SIM focus pos	-0.782348	-0.7809083437167272
[mm] SIM defocus	0	0.001439871863259334
[mm] SIM translation stage pos	-256.092463	-256.0955850403938
[mm] SIM translation stage offset	22.5	22.50313203746413
[s] Observation start time (MET)	227693363.184000	227692219.918
Observation start date	2005-03-20T08:08:19	2005-03-20T07:50:19
[s] Observation end time (MET)	227708363.184000	227708517.41874
Observation end date	2005-03-20T12:18:19	2005-03-20T12:21:57
Read mode	TIMED	TIMED

Parameter	Planned	Actual
Obspar format version number	7	7
Obspar file type	PREDICTED	ACTUAL
Obspar update status	NONE	UPDATED
Number of optional ACIS chips dropped	0	0
On-chip summing requested	N	N
Subarray requested	NONE	NONE
Alternating exposures requested	N	N
[s] Primary exposure time	0.000000	3.1

2.3 Aspect

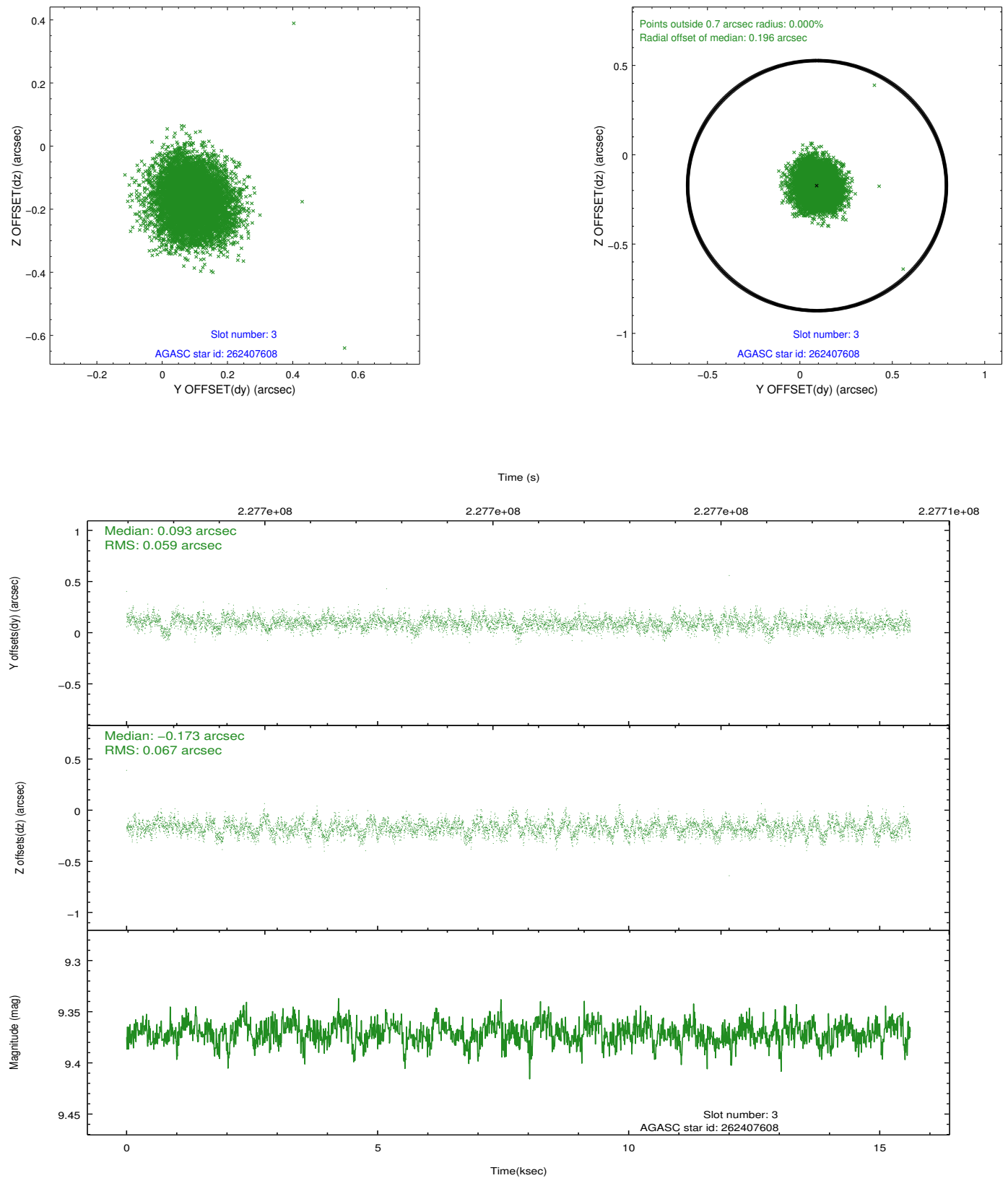


Slot Statistics

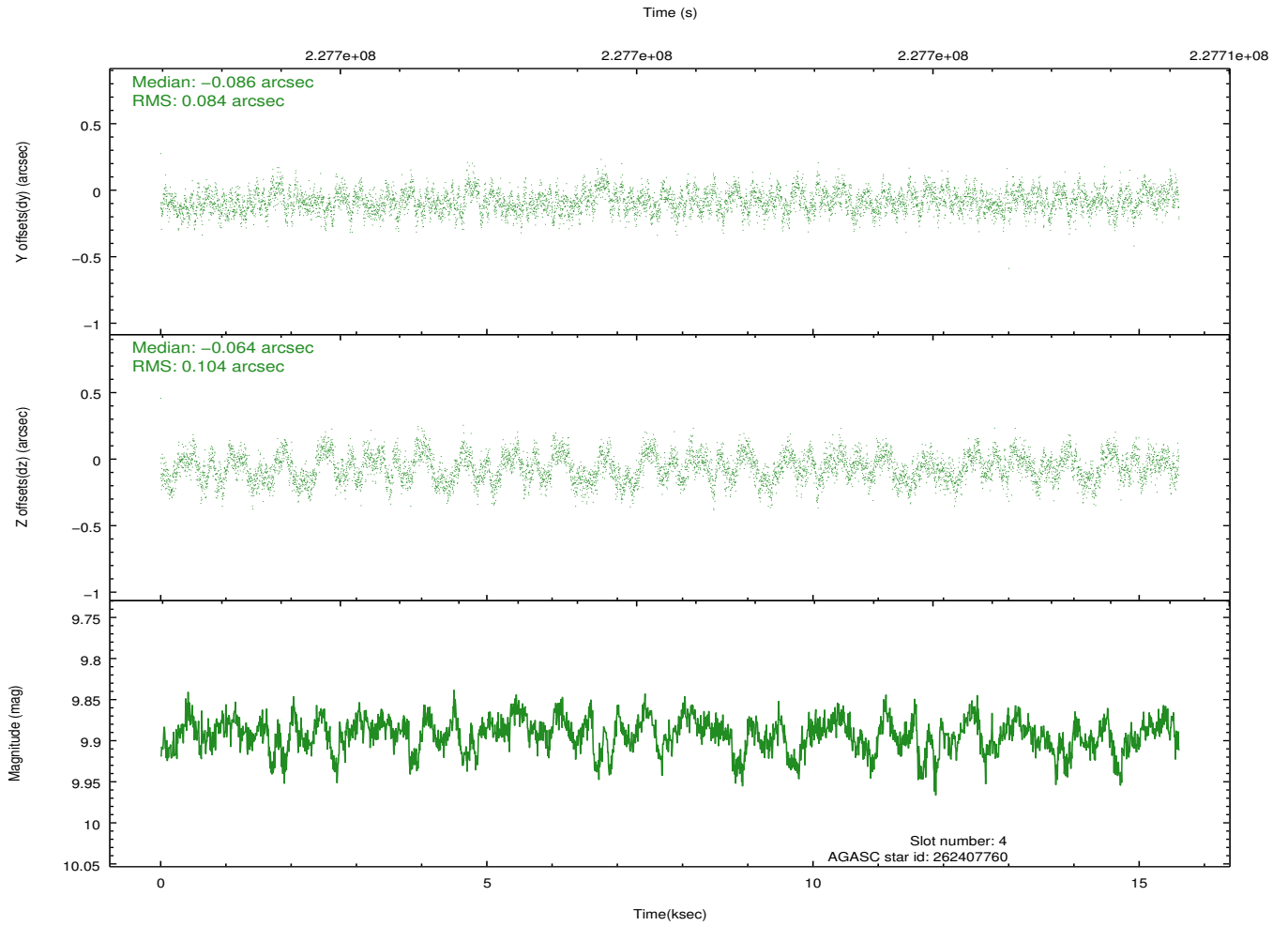
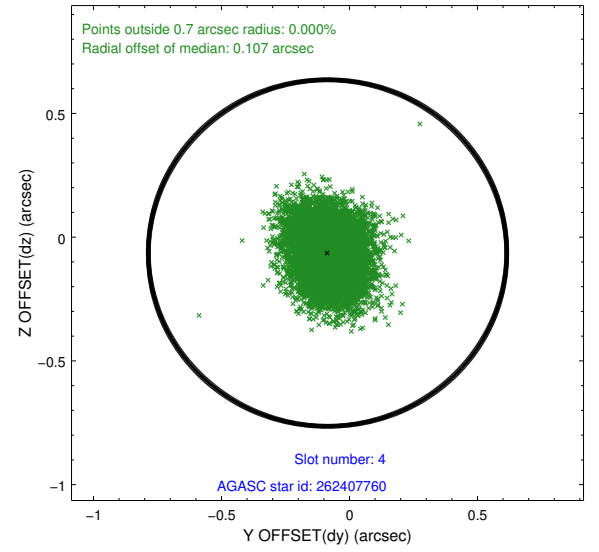
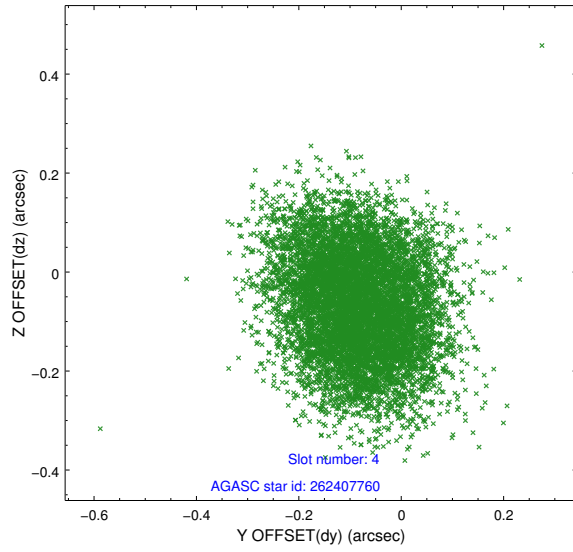
slot	status	id	mag	n_pts	med_dy	med_dz	dr1	dr2	ra	dec	mean_y	mean_z
0	FID	ACIS-I-1	7.35	3808	-0.085	0.138	0.007	0.012	0.000000	0.000000	930.68	-369.58
1	FID	ACIS-I-5	7.24	3807	-0.057	-0.019	0.007	0.012	0.000000	0.000000	-1817.35	1527.56
2	FID	ACIS-I-6	7.25	3808	0.051	-0.052	0.008	0.013	0.000000	0.000000	395.91	2172.46
3	GUIDE	262407608	9.37	7614	0.093	-0.173	0.096	0.153	207.378401	26.435507	-1087.06	33.07
4	GUIDE	262407760	9.89	7610	-0.086	-0.064	0.144	0.224	206.566773	26.577263	1008.72	1677.88
5	GUIDE	262407800	10.09	7605	-0.250	0.196	0.170	0.261	207.321181	27.251762	1262.01	-1740.98
6	GUIDE	262408096	9.36	7587	0.148	-0.027	0.112	0.188	207.011678	26.515421	-97.42	740.80
7	GUIDE	262408936	9.67	7609	0.087	0.066	0.153	0.238	207.154731	26.726554	176.81	-104.00

2.4 Star Slots

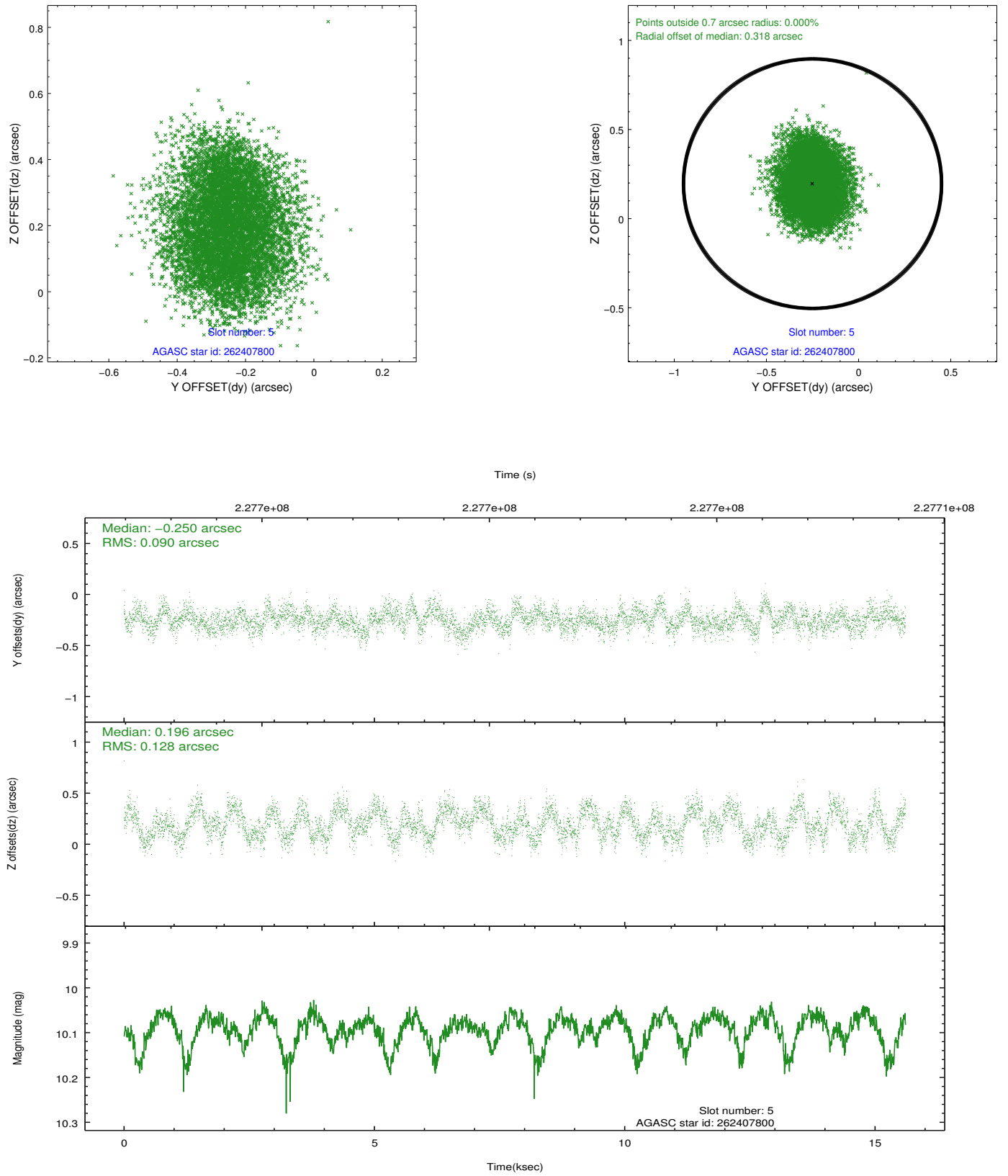
2.4.1 Slot 3



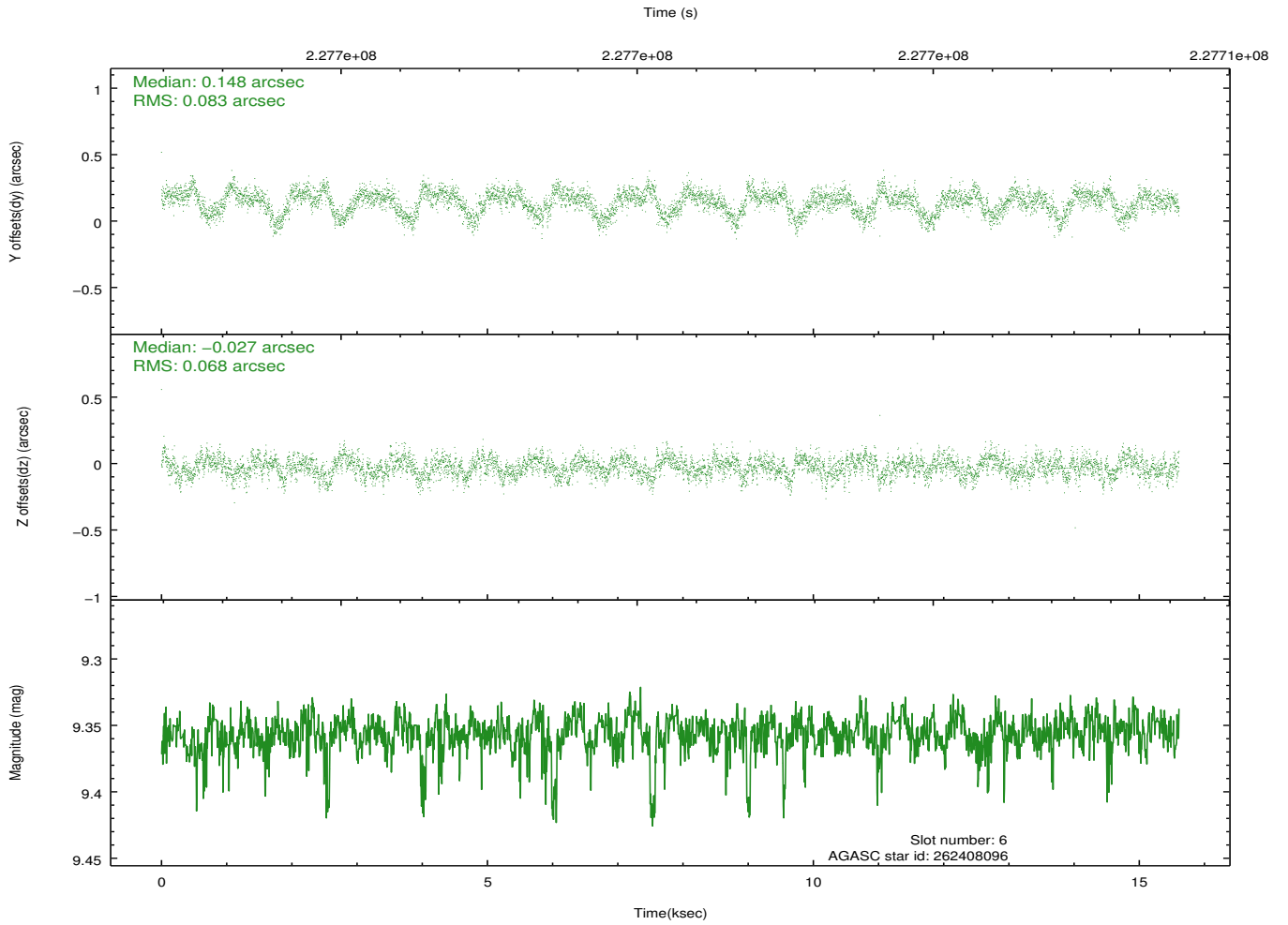
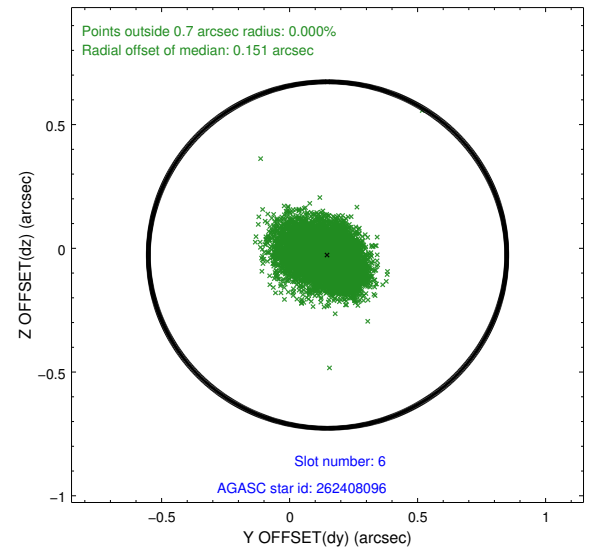
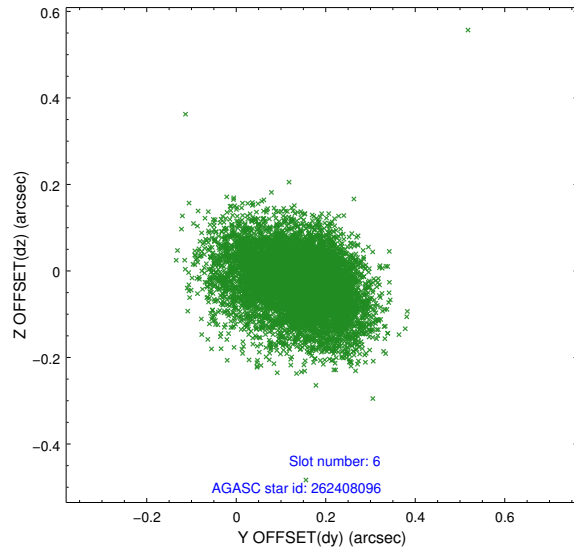
2.4.2 Slot 4



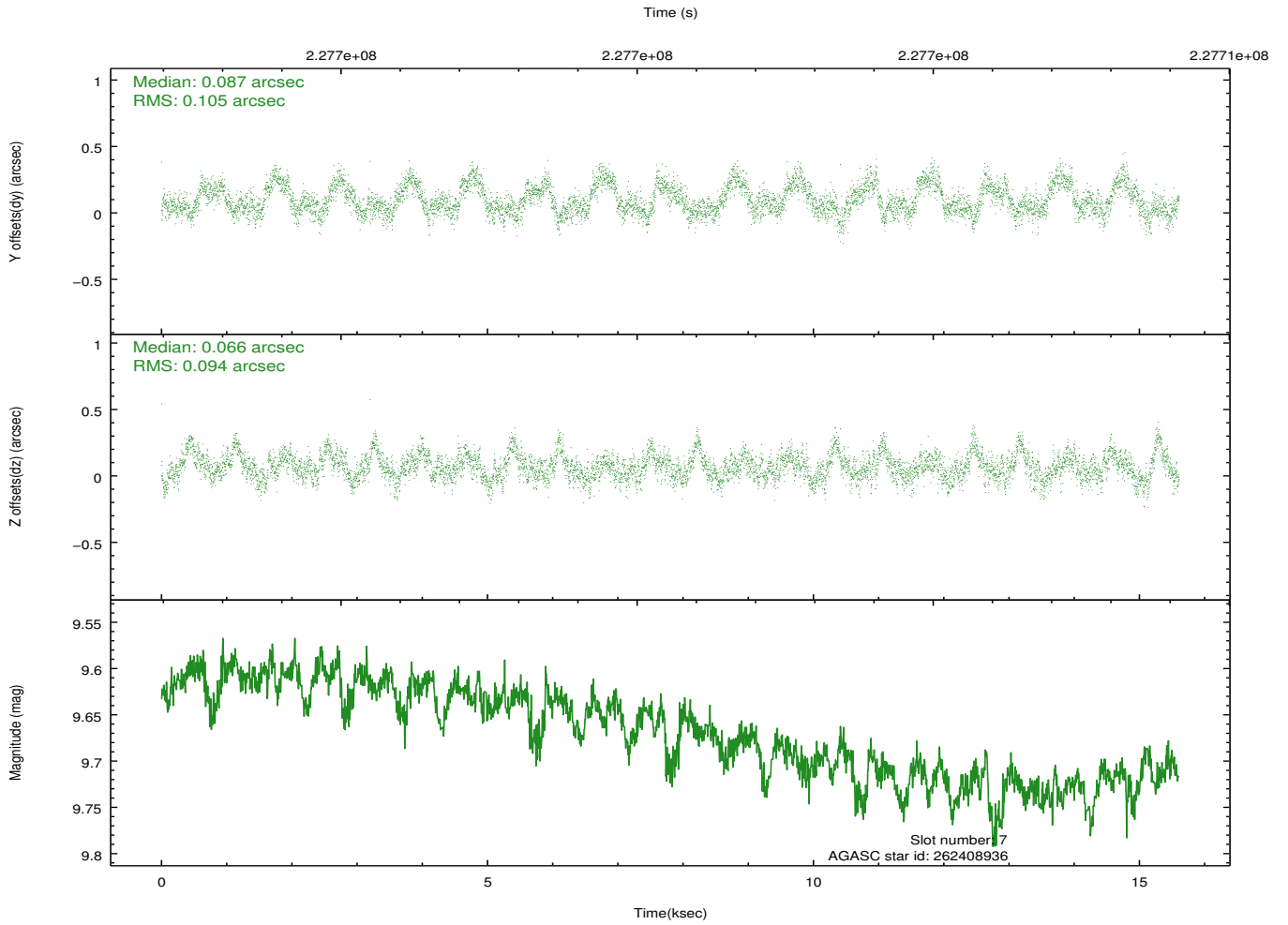
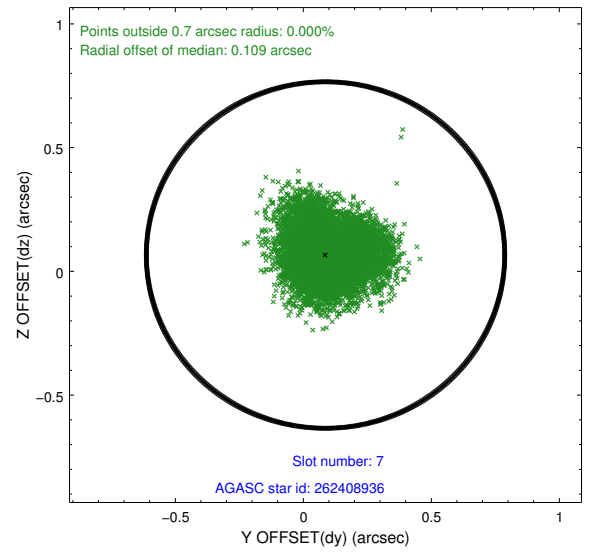
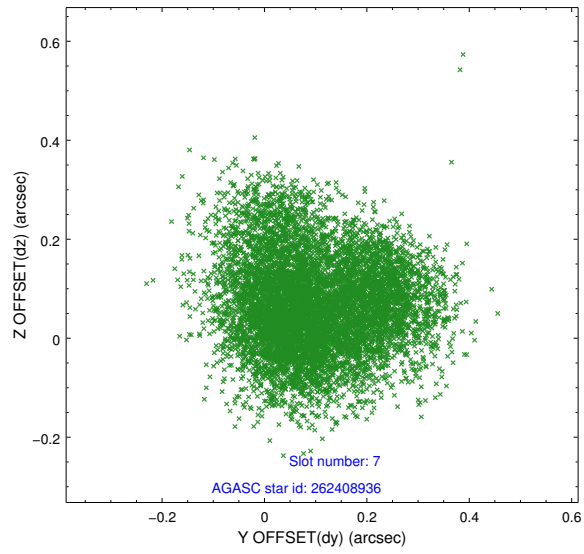
2.4.3 Slot 5



2.4.4 Slot 6

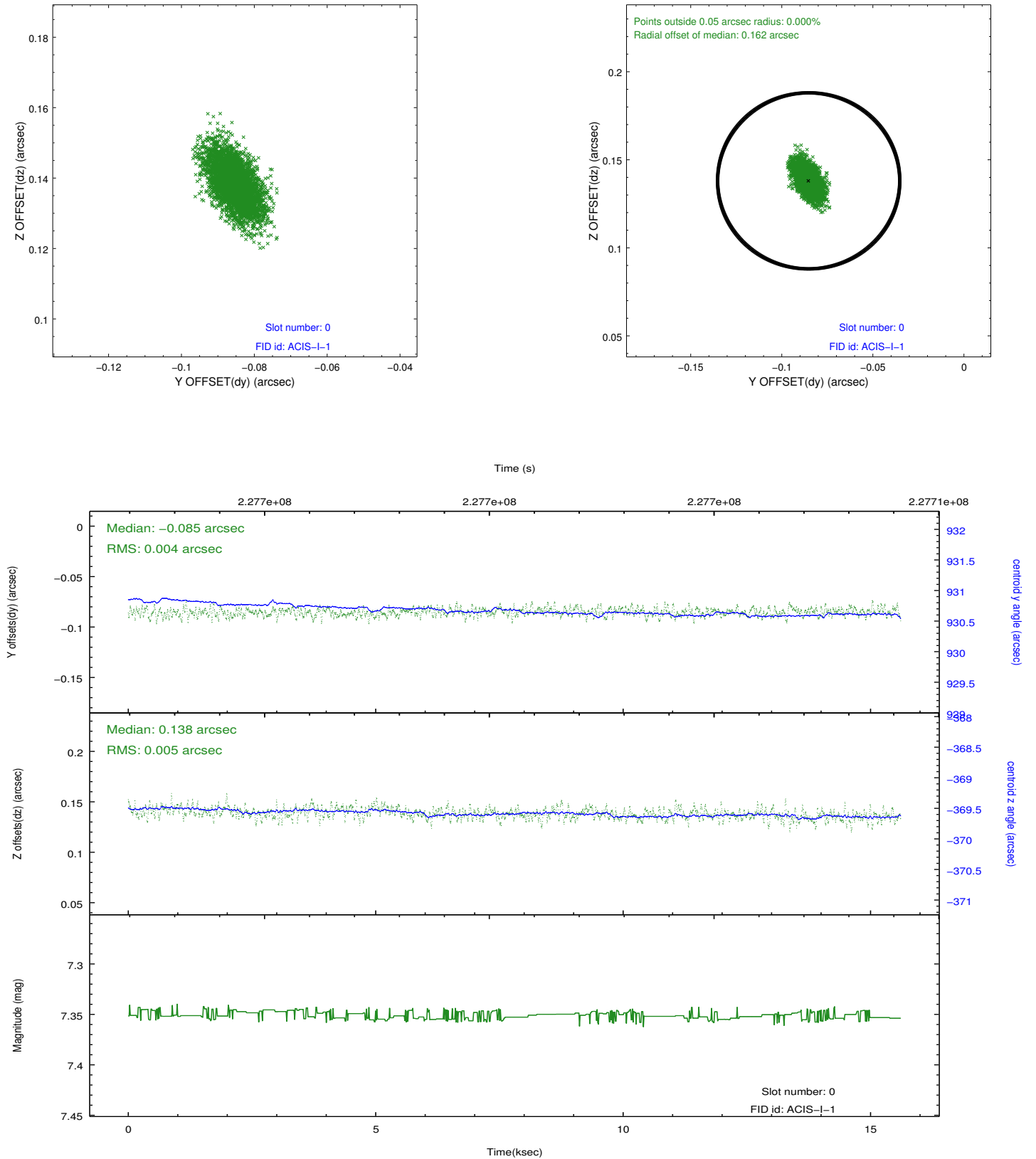


2.4.5 Slot 7

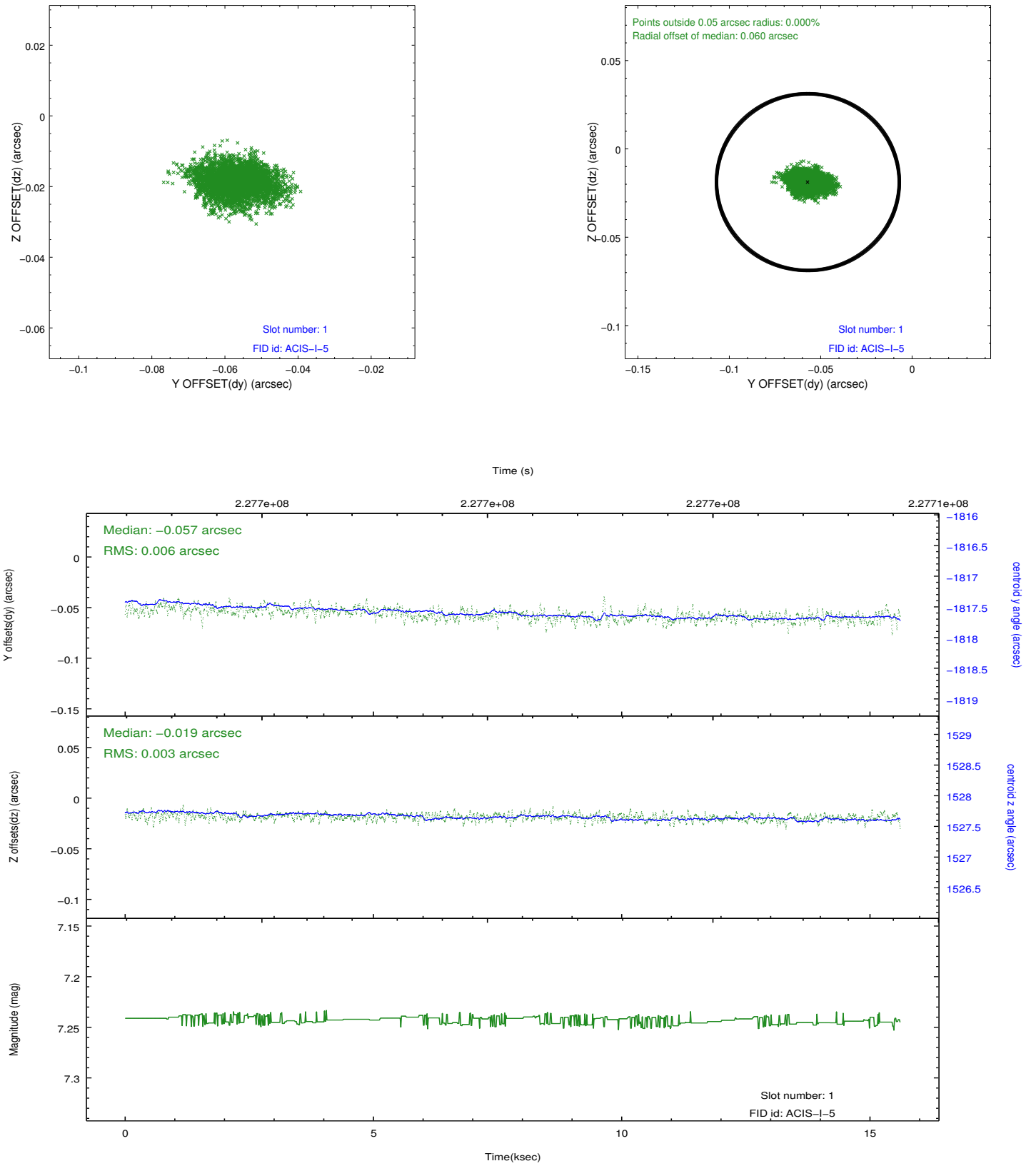


2.5 FID Slots

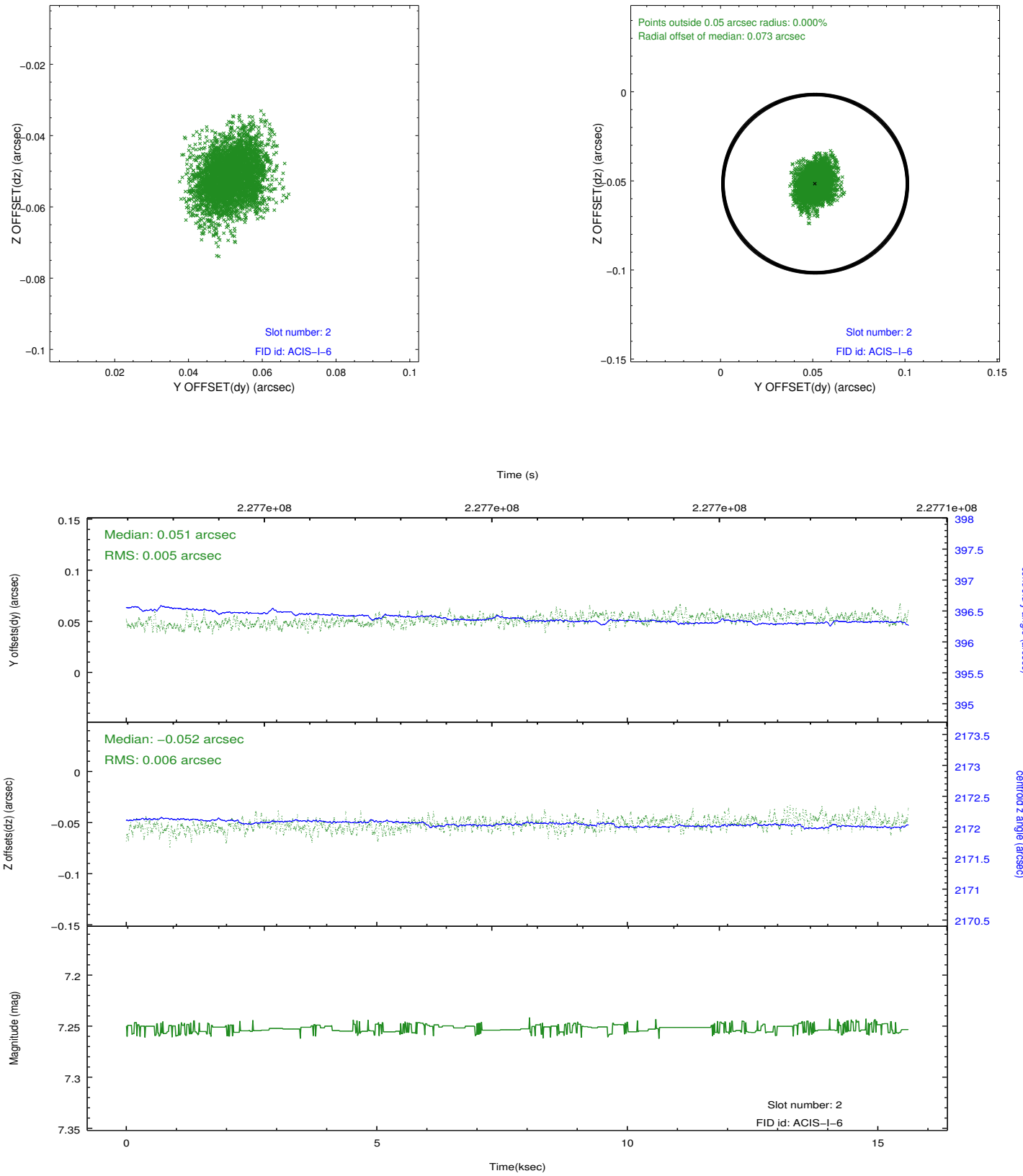
2.5.1 Slot 0



2.5.2 Slot 1



2.5.3 Slot 2



A Summary

A.1 Status

V&V Scientist	Jen Lauer
V&V Date (YYYY-MM-DD)	2013.01.14
V&V Edition	1
V&V Disposition and Status	OK
V&V Charge Time	15.04735

A.2 Comments

Window constraint satisfied.