

V&V Reference Report

L2 ASCDS Version : 8.4.5

Observation 61449 - L2 Version 3
Chandra X-Ray Center

L2 Processing Date : Sep 25 2012

Contents

1	Front	2
2	OBI	3
2.1	OBI	3
2.1.1	Images	3
2.1.2	Bias	3
2.1.3	Parameters	4
2.1.4	Events	4
2.2	Compared Parameters	5
2.3	Star Slots	6
2.4	FID Slots	6
A	Summary	7
A.1	Status	7
A.2	Comments	7

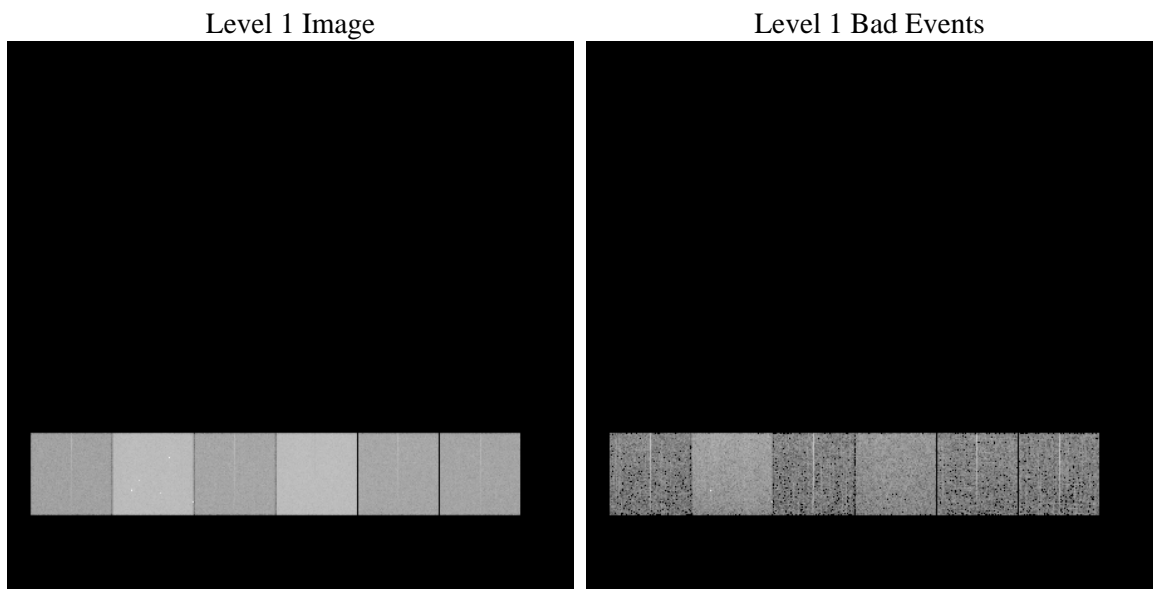
1 Front

seq_num	 	Sequence number
obs_id	61449	Observation id
title	ACIS-456789 diagnostics	Proposal title
observer	CHANDRA engineering request/realtime commanding	Principal investig
object	 	Source name
dtcycle	0	
cycle	P	events from which exps? Prim/Second/Both
ra_targ	0.0	Observer's specified target RA [deg]
dec_targ	0.0	Observer's specified target Dec [deg]
ra_nom	136.99742331701	Nominal RA [deg]
dec_nom	40.028555579037	Nominal Dec [deg]
roll_nom	61.233077664803	Nominal Roll [deg]
revision	3	Processing version of data
ontime	6330.6684197634	Sum of GTIs [s]
livetime	6250.5056843615	Livetime [s]
ontime4	2465.3129057884	Sum of GTIs [s]
ontime5	6771.4390437007	Sum of GTIs [s]
ontime6	2701.8673565537	Sum of GTIs [s]
ontime7	6330.6684197634	Sum of GTIs [s]
ontime8	2770.0111766458	Sum of GTIs [s]
ontime9	2652.1448003501	Sum of GTIs [s]
l2events	1327455	Number of level 2 events

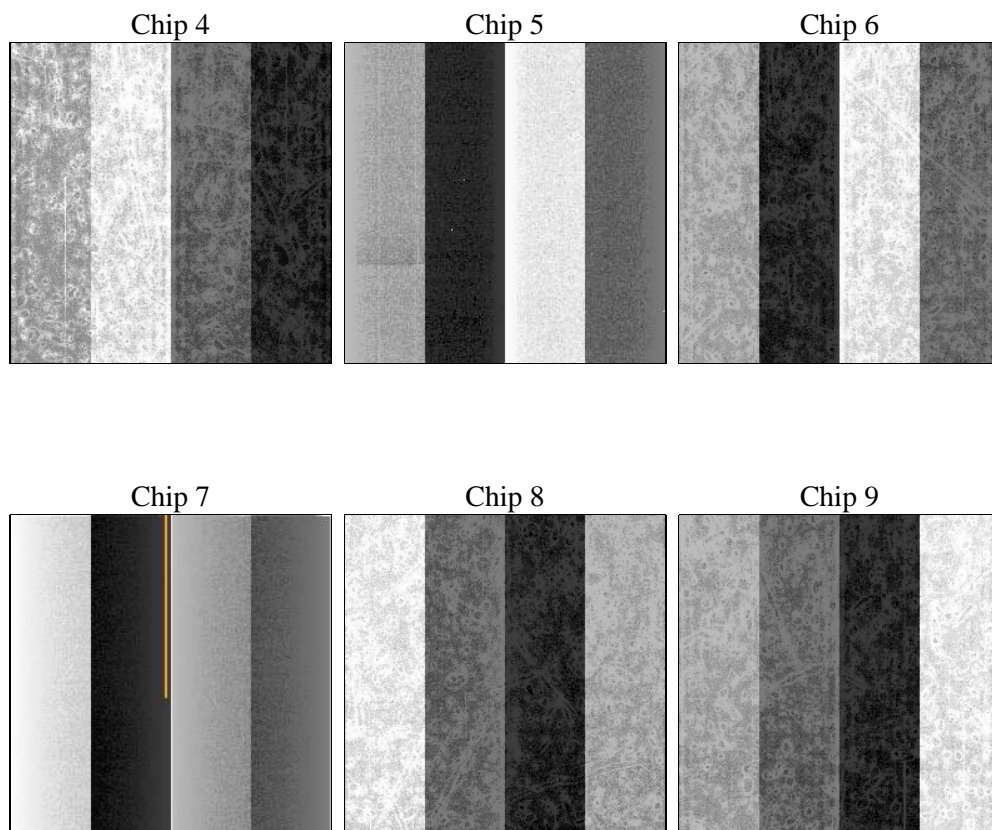
2 OBI

2.1 OBI

2.1.1 Images



2.1.2 Bias



2.1.3 Parameters

obi_num	1	Obi number	sched_exp_time	0.0	[s] Scheduled observation exposure time
ascdsver	8.4.5	Processing system revision	ontime	6330.6684197634	Sum of GTIs [s]
caldbver	4.5.1.1	 	ontime4	2465.3129057884	Sum of GTIs [s]
date	2012-09-25T04:44:20	Date and time of file creation	ontime5	6771.4390437007	Sum of GTIs [s]
revision	3	Processing version of data	ontime6	2701.8673565537	Sum of GTIs [s]
			ontime7	6330.6684197634	Sum of GTIs [s]
			ontime8	2770.0111766458	Sum of GTIs [s]
			ontime9	2652.1448003501	Sum of GTIs [s]
			l1events	1544078	Number of level 1 events

2.1.4 Events

	ccd 4	ccd 5	ccd 6	ccd 7	ccd 8	ccd 9		ccd 4	ccd 5	ccd 6	ccd 7	ccd 8	ccd 9
level 1 events	161884	406467	187765	417109	192969	177884	grade 0 events	80908	85134	91981	98339	95215	86761
rejected events	19407	46811	19603	31052	20650	19941		49%	20%	48%	23%	49%	48%
rejected %	11%	11%	10%	7%	10%	11%	grade 1 events	377	445	437	219	450	420
								0%	0%	0%	0%	0%	0%
							grade 2 events	25229	131294	29092	84886	30254	27651
								15%	32%	15%	20%	15%	15%
							grade 3 events	8582	22435	10358	39133	10938	9707
								5%	5%	5%	9%	5%	5%
							grade 4 events	8610	22119	10156	38689	10658	9696
								5%	5%	5%	9%	5%	5%
							grade 5 events	1341	9197	1458	6526	1650	1539
								0%	2%	0%	1%	0%	0%
							grade 6 events	19148	98674	26575	125010	25254	24128
								11%	24%	14%	29%	13%	13%
							grade 7 events	17689	37169	17708	24307	18550	17982
								10%	9%	9%	5%	9%	10%

2.2 Compared Parameters

Parameter	Planned	Actual	Parameter	Planned	Actual
Instrument	ACIS	ACIS	Obspar format version number	7	7
Detector	ACIS-456789	ACIS-456789	Obspar file type	PREDICTED	ACTUAL
Grating	NONE	NONE	Obspar update status	NONE	UPDATED
Data mode	FAINT	FAINT	On-chip summing requested	N	N
Observation mode	SECONDARY	SECONDARY	Subarray requested	NONE	NONE
[deg] Pointing RA	0	136.997423317014	Alternating exposures requested	N	N
[deg] Pointing Dec	0	40.02855557903704	[s] Primary exposure time	0.000000	3.2
[deg] Pointing Roll	0.0	61.2330776648034			
[mm] SIM focus pos	-0.684267	-1.428180813131781			
[mm] SIM defocus	0	0.1051558262725154			
[mm] SIM translation stage pos	-190.132523	250.466033080201			
[mm] SIM translation stage offset	0	-0.01005468664627074			
[s] Observation start time (MET)	118594518.588	118594517.81963			
Observation start date	2001-10-04T14:55:19	2001-10-04T14:55:17			
[s] Observation end time (MET)	118615828.339	118615827.57047			
Observation end date	2001-10-04T20:50:28	2001-10-04T20:50:27			
Read mode	TIMED	TIMED			

2.3 Star Slots

2.4 FID Slots

A Summary

A.1 Status

V&V Scientist	Jen Lauer
V&V Date (YYYY-MM-DD)	2012.09.27
V&V Edition	1
V&V Disposition and Status	OK
V&V Charge Time	6.3306684197634

A.2 Comments