

# V&V Reference Report

## L2 ASCDS Version : 7.6.10

Observation 61379 - L2 Version 001  
Chandra X-Ray Center

L2 Processing Date : Jan 18 2007

## Contents

<b>1</b>	<b>Front</b>	<b>2</b>
<b>2</b>	<b>OBI</b>	<b>3</b>
2.1	OBI . . . . .	3
2.1.1	Images . . . . .	3
2.1.2	Bias . . . . .	3
2.1.3	Parameters . . . . .	4
2.1.4	Events . . . . .	4
2.2	Compared Parameters . . . . .	5
2.3	Star Slots . . . . .	6
2.4	FID Slots . . . . .	6
<b>A</b>	<b>Summary</b>	<b>7</b>
A.1	Status . . . . .	7
A.2	Comments . . . . .	7

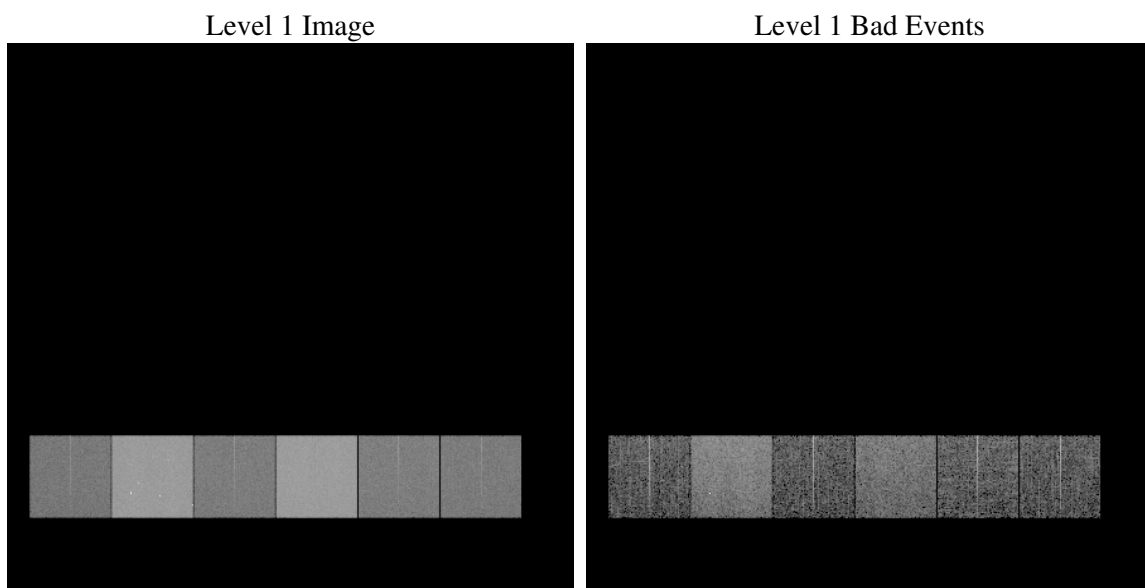
# 1 Front

seq_num	&#160
obs_id	61379
title	ACIS-456789 diagnostics
observer	CHANDRA engineering request/realtime commanding
object	&#160
dtcycle	0
cycle	P
ra_targ	0.0
dec_targ	0.0
ra_nom	352.02499305518
dec_nom	17.984038611006
roll_nom	293.34391162855
revision	2
ontime	6723.2727121264
livetime	6638.1385847766
ontime4	2511.4317789525
ontime5	7193.2114612162
ontime6	2722.057939738
ontime7	6723.2727121264
ontime8	2798.4362794906
ontime9	2686.2837087512
l2events	1307416

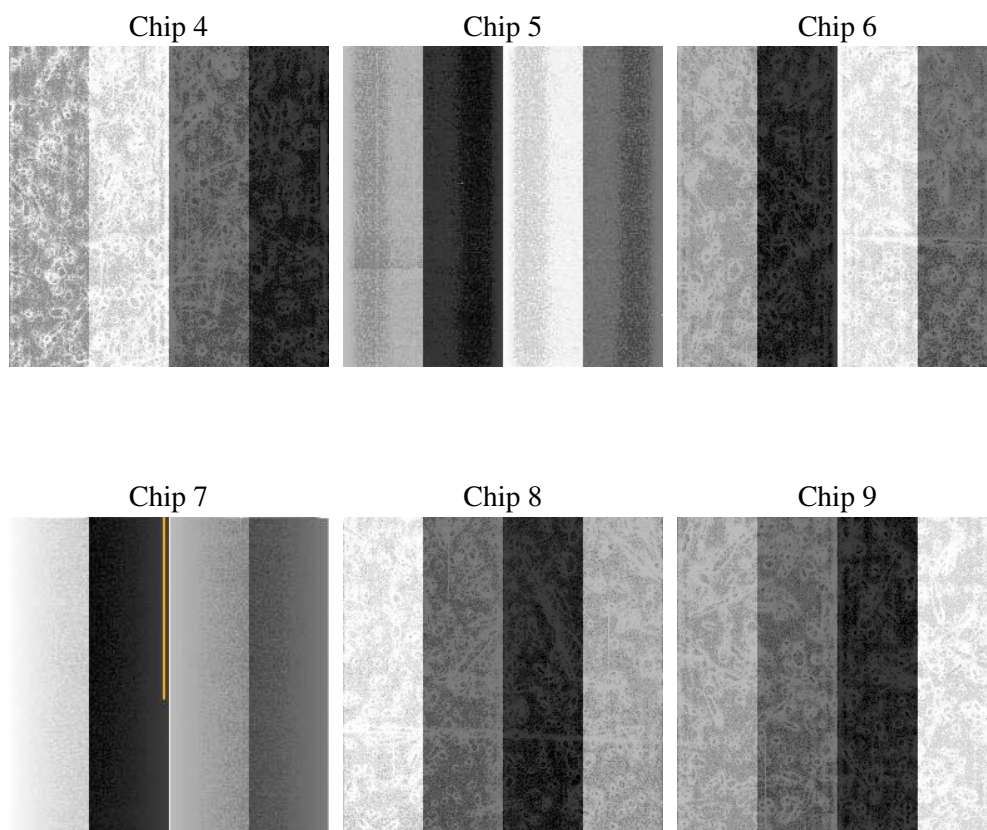
## 2 OBI

### 2.1 OBI

#### 2.1.1 Images



#### 2.1.2 Bias



### 2.1.3 Parameters

obi_num	0
ascdsver	7.6.10
caldsver	3.3.0
date	2007-01-18T10:06:00
revision	2

sched_exp_time	0.0
ontime	6723.2727121264
ontime4	2511.4317789525
ontime5	7193.2114612162
ontime6	2722.057939738
ontime7	6723.2727121264
ontime8	2798.4362794906
ontime9	2686.2837087512
l1events	1544993

### 2.1.4 Events

	ccd 4	ccd 5	ccd 6	ccd 7	ccd 8	ccd 9
level 1 events	157838	417171	180515	427740	188600	173129
rejected events	21969	53213	21506	37672	24221	21430
rejected %	13%	12%	11%	8%	12%	12%

	ccd 4	ccd 5	ccd 6	ccd 7	ccd 8	ccd 9
grade 0 events	77599	87174	87382	99213	90995	83691
	49%	20%	48%	23%	48%	48%
grade 1 events	413	260	421	274	491	401
	0%	0%	0%	0%	0%	0%
grade 2 events	24090	132632	27795	86499	29153	27012
	15%	31%	15%	20%	15%	15%
grade 3 events	8277	22948	9812	39799	10574	9400
	5%	5%	5%	9%	5%	5%
grade 4 events	8429	22771	9843	39486	10435	9491
	5%	5%	5%	9%	5%	5%
grade 5 events	1338	9515	1584	7091	1721	1576
	0%	2%	0%	1%	0%	0%
grade 6 events	18552	101071	25309	127883	24397	23238
	11%	24%	14%	29%	12%	13%
grade 7 events	19140	40800	18369	27495	20834	18320
	12%	9%	10%	6%	11%	10%

## 2.2 Compared Parameters

Parameter	Planned	Actual	Parameter	Planned	Actual
Instrument	ACIS	ACIS	Obspar format version number	6	6
Detector	ACIS-456789	ACIS-456789	Obspar file type	PREDICTED	ACTUAL
Grating	NONE	NONE	Obspar update status	NONE	UPDATED
Data mode	FAINT	FAINT	On-chip summing requested	N	N
Observation mode	SECONDARY	SECONDARY	Subarray requested	NONE	NONE
Pointing RA	0	352.0249930551759	Alternating exposures requested	N	N
Pointing Dec	0	17.98403861100623	Primary exposure time	0.000000	3.2
Pointing Roll	0.0	293.3439116285524			
SIM focus pos (mm)	-0.684267	-0.7809083437167272			
SIM defocus (mm)	0	0.7524282956875696			
SIM translation stage pos (mm)	-190.132523	250.466033080201			
SIM translation stage offset (mm)	0	-0.01005468664627074			
Observation start time	124995533.143	124995532.37482			
Observation start date	2001-12-17T16:58:53	2001-12-17T16:58:52			
Observation end time	125016842.894	125016842.12567			
Observation end date	2001-12-17T22:54:03	2001-12-17T22:54:02			
Read mode	TIMED	TIMED			

## **2.3 Star Slots**

## **2.4 FID Slots**

## A Summary

### A.1 Status

V&V Scientist	Jen Lauer
V&V Date (YYYY-MM-DD)	2007.01.18
V&V Edition	1
V&V Disposition and Status	OK
V&V Charge Time	6.72327271

### A.2 Comments