

V&V Reference Report

L2 ASCDS Version : 7.6.9

Observation 61089 - L2 Version 001
Chandra X-Ray Center

L2 Processing Date : Sep 30 2006

Contents

1	Front	2
2	OBI	3
2.1	OBI	3
2.1.1	Images	3
2.1.2	Bias	3
2.1.3	Parameters	4
2.1.4	Events	4
2.2	Compared Parameters	5
2.3	Aspect	6
2.4	Star Slots	8
2.5	FID Slots	8
A	Summary	9
A.1	Status	9
A.2	Comments	9

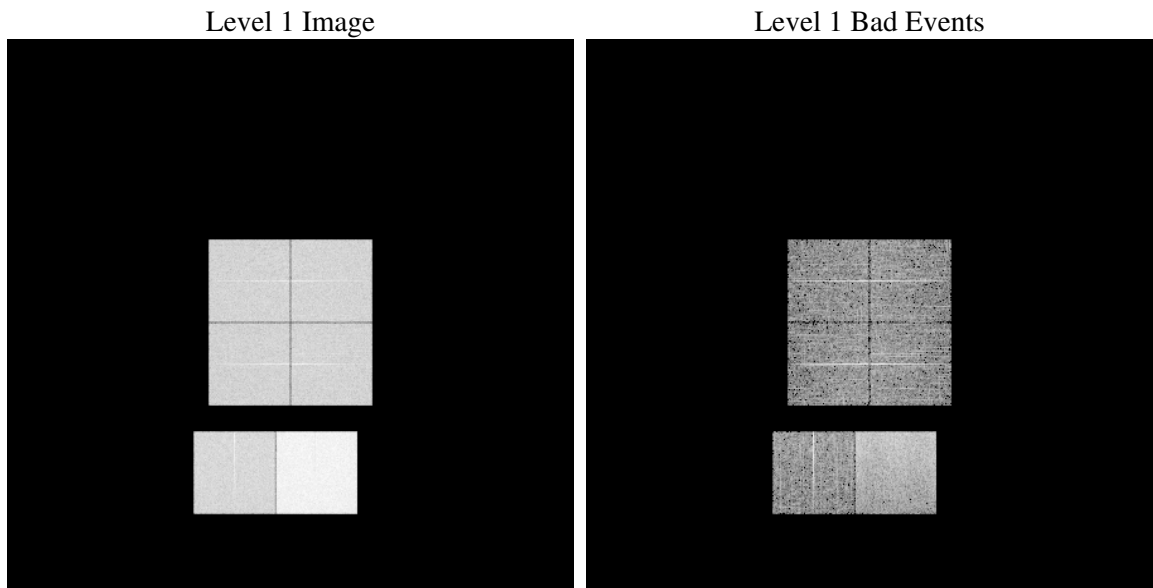
1 Front

seq_num	
obs_id	61089
title	ACIS-012367 diagnostics
observer	CHANDRA engineering request/realtime commanding
object	
dtcycle	0
cycle	P
ra_targ	0.0
dec_targ	0.0
ra_nom	217.83039592232
dec_nom	-42.293856515875
roll_nom	249.63527032086
revision	2
ontime	7791.9999709725
livetime	7693.332975561
ontime0	3520.3978408575
ontime1	3572.2536434829
ontime2	3378.4468614161
ontime3	3458.818878144
ontime6	3737.5458659232
ontime7	7791.9999709725
l2events	1203392

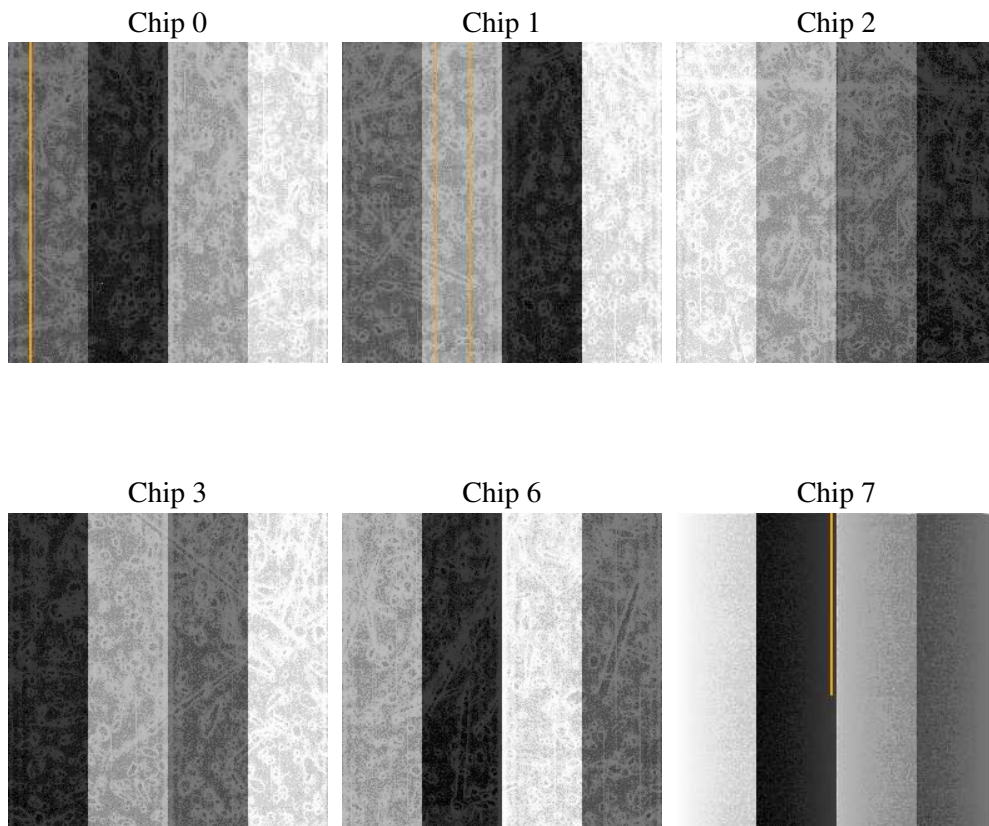
2 OBI

2.1 OBI

2.1.1 Images



2.1.2 Bias



2.1.3 Parameters

obi_num	0
ascdsver	7.6.9
caldbver	3.2.3
date	2006-09-30T16:43:29
revision	2

sched_exp_time	0.0
ontime	7794.6040609479
ontime0	3523.0019308329
ontime1	3574.8577334583
ontime2	3380.3978849053
ontime3	3461.4229681194
ontime6	3740.1499558985
ontime7	7794.6040609479
l1events	1438071

2.1.4 Events

	ccd 0	ccd 1	ccd 2	ccd 3	ccd 6	ccd 7
level 1 events	194886	198090	190909	196628	219251	438307
rejected events	24010	24849	25324	26230	27148	54629
rejected %	12%	12%	13%	13%	12%	12%

	ccd 0	ccd 1	ccd 2	ccd 3	ccd 6	ccd 7
grade 0 events	94416	95344	93130	95749	104591	72114
	48%	48%	48%	48%	47%	16%
grade 1 events	529	507	585	608	523	160
	0%	0%	0%	0%	0%	0%
grade 2 events	29600	30520	27966	29261	32992	114868
	15%	15%	14%	14%	15%	26%
grade 3 events	11195	11132	10582	11013	11967	29075
	5%	5%	5%	5%	5%	6%
grade 4 events	10866	10905	10649	11080	11966	28418
	5%	5%	5%	5%	5%	6%
grade 5 events	1717	1775	1625	1806	1991	7381
	0%	0%	0%	0%	0%	1%
grade 6 events	24924	25500	23415	23450	30748	139345
	12%	12%	12%	11%	14%	31%
grade 7 events	21639	22407	22957	23661	24473	46946
	11%	11%	12%	12%	11%	10%

2.2 Compared Parameters

Parameter	Planned	Actual	Parameter	Planned	Actual
Instrument	ACIS	ACIS	Obspar format version number	6	6
Detector	ACIS-012367	ACIS-012367	Obspar file type	PREDICTED	ACTUAL
Grating	NONE	NONE	Obspar update status	NONE	UPDATED
Data mode	FAINT	FAINT	On-chip summing requested	N	N
Observation mode	SECONDARY	SECONDARY	Subarray requested	NONE	NONE
Pointing RA	0	217.8303959223189	Alternating exposures requested	N	N
Pointing Dec	0	-42.29385651587496	Primary exposure time	0.000000	3.2
Pointing Roll	0.0	249.6352703208626			
SIM focus pos (mm)	-0.782348	-0.7809083437167272			
SIM defocus (mm)	0	0.7524282956875696			
SIM translation stage pos (mm)	-233.592463	250.466033080201			
SIM translation stage offset (mm)	0	-0.01005468664627074			
Observation start time	145521265.833791	145521264.80908			
Observation start date	2002-08-12T06:34:26	2002-08-12T06:34:24			
Observation end time	145531841.784226	145531840.75951			
Observation end date	2002-08-12T09:30:42	2002-08-12T09:30:40			
Read mode	TIMED	TIMED			

2.3 Aspect

2.4 Star Slots

2.5 FID Slots

A Summary

A.1 Status

V&V Scientist	Jen Lauer
V&V Date (YYYY-MM-DD)	2006.10.02
V&V Edition	1
V&V Disposition and Status	OK
V&V Charge Time	7.79199997

A.2 Comments