

V&V Reference Report

L2 ASCDS Version : 8.4.5

Observation 61079 - L2 Version 3
Chandra X-Ray Center

L2 Processing Date : Oct 13 2012

Contents

1	Front	2
2	OBI	3
2.1	OBI	3
2.1.1	Images	3
2.1.2	Bias	3
2.1.3	Parameters	4
2.1.4	Events	4
2.2	Compared Parameters	5
2.3	Star Slots	6
2.4	FID Slots	6
A	Summary	7
A.1	Status	7
A.2	Comments	7

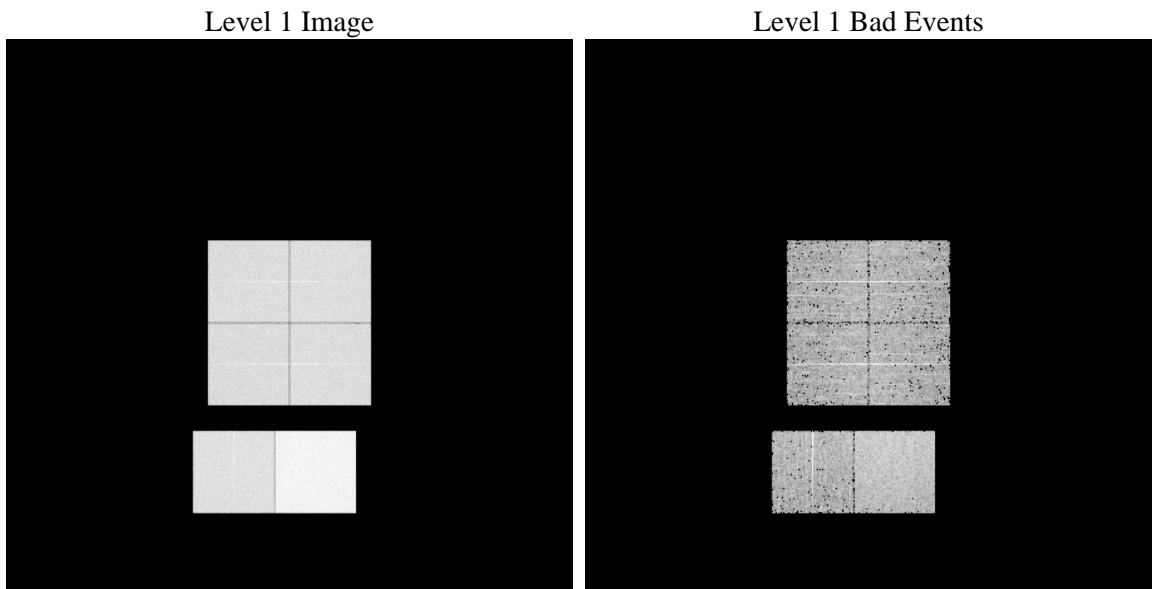
1 Front

seq_num	 	Sequence number
obs_id	61079	Observation id
title	ACIS-012367 diagnostics	Proposal title
observer	CHANDRA engineering request/realtime commanding	Principal investig
object	 	Source name
dtcycle	0	
cycle	P	events from which exps? Prim/Second/Both
ra_targ	0.0	Observer's specified target RA [deg]
dec_targ	0.0	Observer's specified target Dec [deg]
ra_nom	254.81007132203	Nominal RA [deg]
dec_nom	-2.5267249257717	Nominal Dec [deg]
roll_nom	257.76895914473	Nominal Roll [deg]
revision	3	Processing version of data
ontime	7795.1426832974	Sum of GTIs [s]
livetime	7696.4358929701	Livetime [s]
ontime0	3600.7869912684	Sum of GTIs [s]
ontime1	3659.1247449219	Sum of GTIs [s]
ontime2	3425.7717683911	Sum of GTIs [s]
ontime3	3552.7479945123	Sum of GTIs [s]
ontime6	3837.3793834448	Sum of GTIs [s]
ontime7	7795.1426832974	Sum of GTIs [s]
l2events	1226708	Number of level 2 events

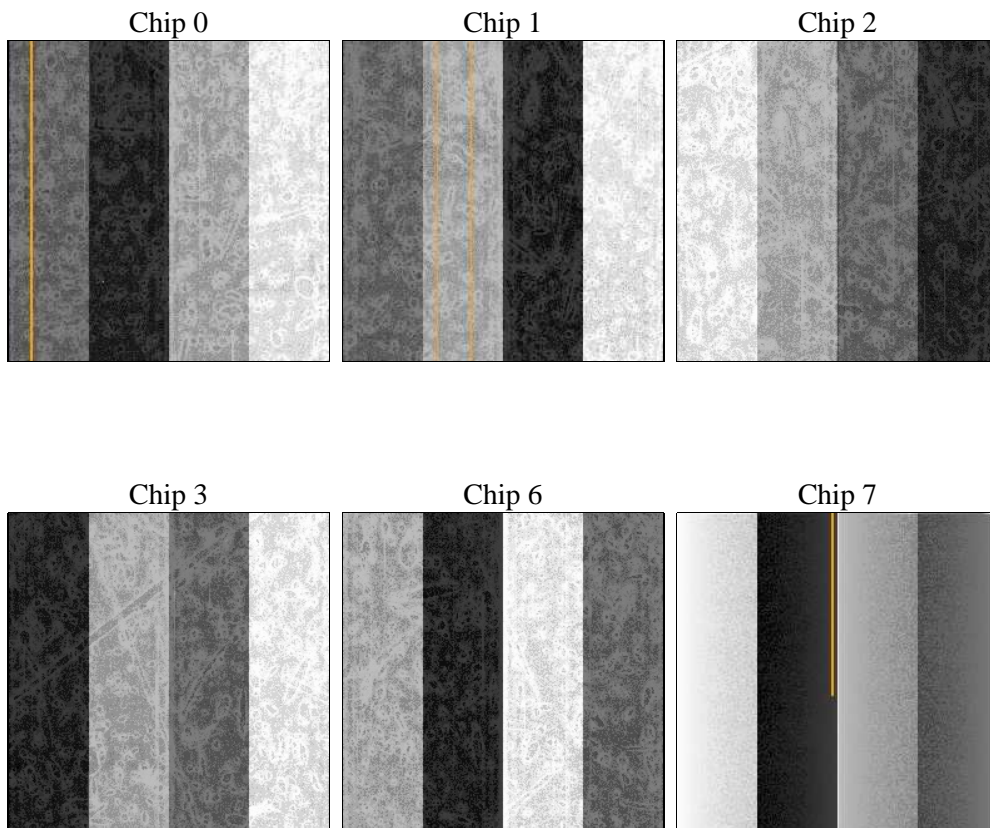
2 OBI

2.1 OBI

2.1.1 Images



2.1.2 Bias



2.1.3 Parameters

obi_num	1	Obi number	sched_exp_time	0.0	[s] Scheduled observation exposure time
ascdsver	8.4.5	Processing system revision	ontime	7795.1426832974	Sum of GTIs [s]
caldsver	4.5.2	 	ontime0	3600.7869912684	Sum of GTIs [s]
date	2012-10-14T00:51:31	Date and time of file creation	ontime1	3659.1247449219	Sum of GTIs [s]
revision	3	Processing version of data	ontime2	3425.7717683911	Sum of GTIs [s]
			ontime3	3552.7479945123	Sum of GTIs [s]
			ontime6	3837.3793834448	Sum of GTIs [s]
			ontime7	7795.1426832974	Sum of GTIs [s]
			l1events	1436171	Number of level 1 events

2.1.4 Events

	ccd 0	ccd 1	ccd 2	ccd 3	ccd 6	ccd 7		ccd 0	ccd 1	ccd 2	ccd 3	ccd 6	ccd 7
level 1 events	196664	201380	190184	198041	220754	429148	grade 0 events	96241	97957	94006	98070	106559	99174
rejected events	23001	23085	23156	23631	24718	37950		48%	48%	49%	49%	48%	23%
rejected %	11%	11%	12%	11%	11%	8%	grade 1 events	468	528	554	563	496	264
								0%	0%	0%	0%	0%	0%
							grade 2 events	29924	31595	28344	29695	33872	86023
								15%	15%	14%	14%	15%	20%
							grade 3 events	11155	11334	10531	11320	12176	39219
								5%	5%	5%	5%	5%	9%
							grade 4 events	11127	11350	10623	11451	12201	39185
								5%	5%	5%	5%	5%	9%
							grade 5 events	1671	1652	1665	1736	1907	7544
								0%	0%	0%	0%	0%	1%
							grade 6 events	25216	26059	23524	24050	31228	127746
								12%	12%	12%	12%	14%	29%
							grade 7 events	20862	20905	20937	21156	22315	29993
								10%	10%	11%	10%	10%	6%

2.2 Compared Parameters

Parameter	Planned	Actual	Parameter	Planned	Actual
Instrument	ACIS	ACIS	Obspar format version number	7	7
Detector	ACIS-012367	ACIS-012367	Obspar file type	PREDICTED	ACTUAL
Grating	NONE	NONE	Obspar update status	NONE	UPDATED
Data mode	FAINT	FAINT	On-chip summing requested	N	N
Observation mode	SECONDARY	SECONDARY	Subarray requested	NONE	NONE
[deg] Pointing RA	0	254.8100713220326	Alternating exposures requested	N	N
[deg] Pointing Dec	0	-2.526724925771731	[s] Primary exposure time	3.2	3.2
[deg] Pointing Roll	0.0	257.7689591447337			
[mm] SIM focus pos	-0.782348	-0.7809083437167272			
[mm] SIM defocus	0	0.7524282956875696			
[mm] SIM translation stage pos	-233.592463	250.466033080201			
[mm] SIM translation stage offset	0	-0.01005468664627074			
[s] Observation start time (MET)	146206033.512023	146206032.4873			
Observation start date	2002-08-20T04:47:14	2002-08-20T04:47:12			
[s] Observation end time (MET)	146217620.112501	146217619.08778			
Observation end date	2002-08-20T08:00:20	2002-08-20T08:00:19			
Read mode	TIMED	TIMED			

2.3 Star Slots

2.4 FID Slots

A Summary

A.1 Status

V&V Scientist	Jen Lauer
V&V Date (YYYY-MM-DD)	2012.10.23
V&V Edition	1
V&V Disposition and Status	OK
V&V Charge Time	7.7951426832974

A.2 Comments