

V&V Reference Report

L2 ASCDS Version : 7.6.9

Observation 61049 - L2 Version 001
Chandra X-Ray Center

L2 Processing Date : Oct 2 2006

Contents

1	Front	2
2	OBI	3
2.1	OBI	3
2.1.1	Images	3
2.1.2	Bias	3
2.1.3	Parameters	4
2.1.4	Events	4
2.2	Compared Parameters	5
2.3	Aspect	6
2.4	Star Slots	8
2.5	FID Slots	8
A	Summary	9
A.1	Status	9
A.2	Comments	9

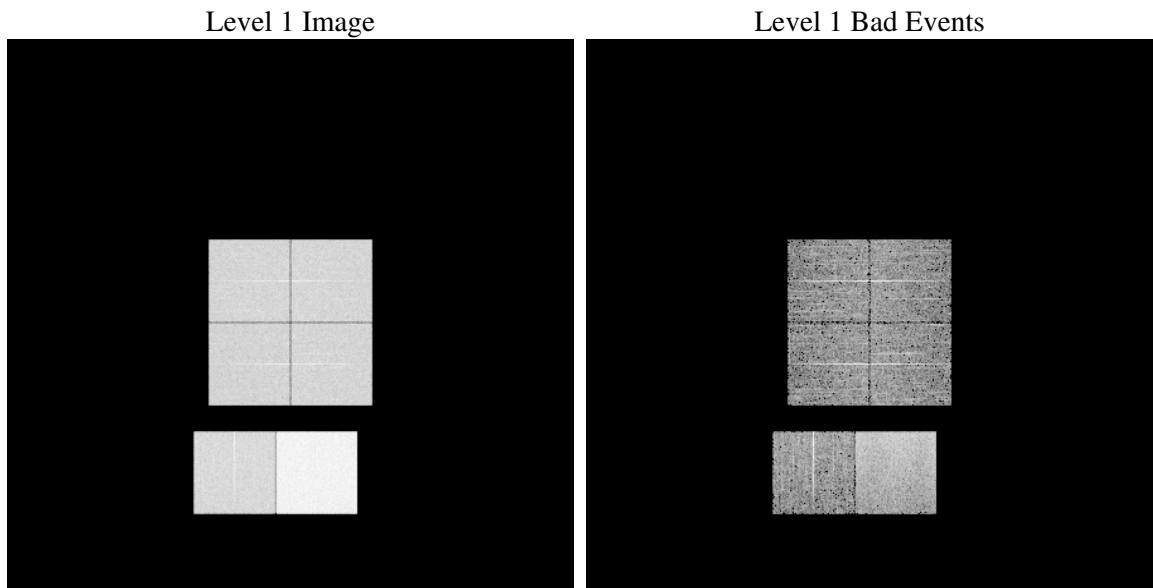
1 Front

seq_num	
obs_id	61049
title	ACIS-012367 diagnostics
observer	CHANDRA engineering request/realtime commanding
object	
dtcycle	0
cycle	P
ra_targ	0.0
dec_targ	0.0
ra_nom	319.46548985233
dec_nom	-64.297703380189
roll_nom	332.0029434416
revision	2
ontime	7797.1184556186
livetime	7698.3866468725
ontime0	3690.8462998867
ontime1	3739.5016844273
ontime2	3477.0219424963
ontime3	3577.3293654323
ontime6	3872.4650985599
ontime7	7797.1184556186
l2events	1203606

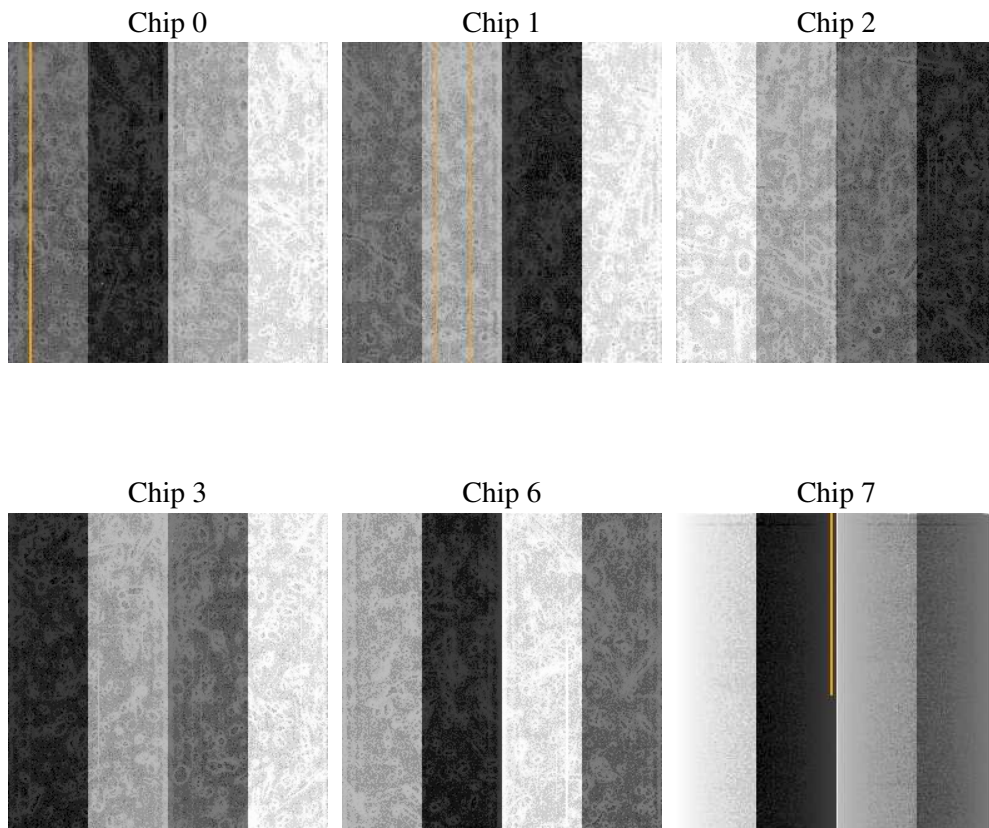
2 OBI

2.1 OBI

2.1.1 Images



2.1.2 Bias



2.1.3 Parameters

obi_num	0
ascdsver	7.6.9
caldbver	3.2.3
date	2006-10-03T01:00:14
revision	2

sched_exp_time	0.0
ontime	7797.847771734
ontime0	3691.5345759988
ontime1	3740.148920536
ontime2	3477.6281386018
ontime3	3578.0997215509
ontime6	3873.0302546918
ontime7	7797.847771734
l1events	1434926

2.1.4 Events

	ccd 0	ccd 1	ccd 2	ccd 3	ccd 6	ccd 7
level 1 events	198642	201247	190340	197200	220766	426731
rejected events	24238	24139	24108	25109	27814	53360
rejected %	12%	11%	12%	12%	12%	12%

	ccd 0	ccd 1	ccd 2	ccd 3	ccd 6	ccd 7
grade 0 events	96251	97407	92957	96562	105323	69223
	48%	48%	48%	48%	47%	16%
grade 1 events	528	463	548	631	515	159
	0%	0%	0%	0%	0%	0%
grade 2 events	30211	31316	28350	29262	32952	111522
	15%	15%	14%	14%	14%	26%
grade 3 events	11175	11284	10706	11223	11976	27803
	5%	5%	5%	5%	5%	6%
grade 4 events	11255	11287	10815	11166	12025	27669
	5%	5%	5%	5%	5%	6%
grade 5 events	1777	1762	1640	1825	2031	7099
	0%	0%	0%	0%	0%	1%
grade 6 events	25512	25814	23404	23878	30676	137154
	12%	12%	12%	12%	13%	32%
grade 7 events	21933	21914	21920	22653	25268	46102
	11%	10%	11%	11%	11%	10%

2.2 Compared Parameters

Parameter	Planned	Actual	Parameter	Planned	Actual
Instrument	ACIS	ACIS	Obspar format version number	6	6
Detector	ACIS-012367	ACIS-012367	Obspar file type	PREDICTED	ACTUAL
Grating	NONE	NONE	Obspar update status	NONE	UPDATED
Data mode	FAINT	FAINT	On-chip summing requested	N	N
Observation mode	SECONDARY	SECONDARY	Subarray requested	NONE	NONE
Pointing RA	0	319.4654898523253	Alternating exposures requested	N	N
Pointing Dec	0	-64.29770338018926	Primary exposure time	3.2	3.2
Pointing Roll	0.0	332.0029434415987			
SIM focus pos (mm)	-0.782348	-0.6828225247311905			
SIM defocus (mm)	0	0.8505141146731063			
SIM translation stage pos (mm)	-233.592463	250.466033080201			
SIM translation stage offset (mm)	0	-0.01005468664627074			
Observation start time	147576493.418542	147576492.39383			
Observation start date	2002-09-05T01:28:13	2002-09-05T01:28:12			
Observation end time	147587721.269005	147587720.2443			
Observation end date	2002-09-05T04:35:21	2002-09-05T04:35:20			
Read mode	TIMED	TIMED			

2.3 Aspect

2.4 Star Slots

2.5 FID Slots

A Summary

A.1 Status

V&V Scientist	Jen Lauer
V&V Date (YYYY-MM-DD)	2006.10.03
V&V Edition	1
V&V Disposition and Status	OK
V&V Charge Time	7.79711845

A.2 Comments