

V&V Reference Report

L2 ASCDS Version : 8.4.5

Observation 60949 - L2 Version 4
Chandra X-Ray Center

L2 Processing Date : Oct 18 2012

Contents

1	Front	2
2	OBI	3
2.1	OBI	3
2.1.1	Images	3
2.1.2	Bias	3
2.1.3	Parameters	4
2.1.4	Events	4
2.2	Compared Parameters	5
2.3	Star Slots	6
2.4	FID Slots	6
A	Summary	7
A.1	Status	7
A.2	Comments	7

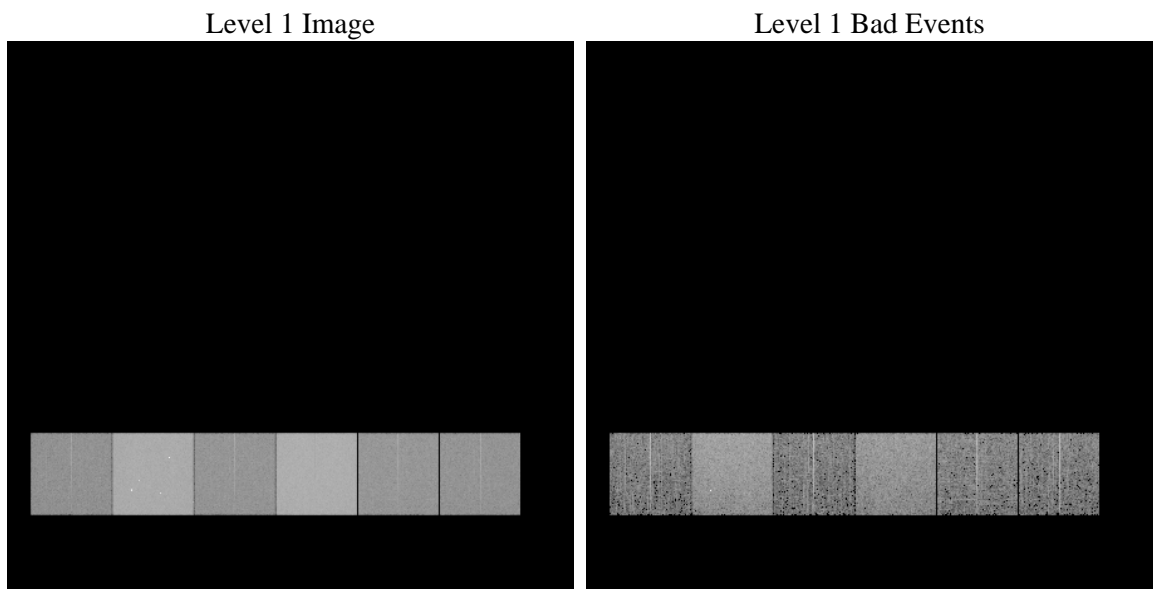
1 Front

seq_num	 	Sequence number
obs_id	60949	Observation id
title	ACIS-456789 diagnostics	Proposal title
observer	CHANDRA engineering request/realtime commanding	Principal investig
object	 	Source name
dtcycle	0	
cycle	P	events from which exps? Prim/Second/Both
ra_targ	0.0	Observer's specified target RA [deg]
dec_targ	0.0	Observer's specified target Dec [deg]
ra_nom	32.114122960493	Nominal RA [deg]
dec_nom	10.973934411811	Nominal Dec [deg]
roll_nom	292.93954463157	Nominal Roll [deg]
revision	4	Processing version of data
ontime	8460.7999684811	Sum of GTIs [s]
livetime	8353.664224798	Livetime [s]
ontime4	3143.0965517461	Sum of GTIs [s]
ontime5	8460.7999684811	Sum of GTIs [s]
ontime6	3424.31212008	Sum of GTIs [s]
ontime7	8460.7999684811	Sum of GTIs [s]
ontime8	3554.7475387156	Sum of GTIs [s]
ontime9	3308.2239868641	Sum of GTIs [s]
l2events	1285554	Number of level 2 events

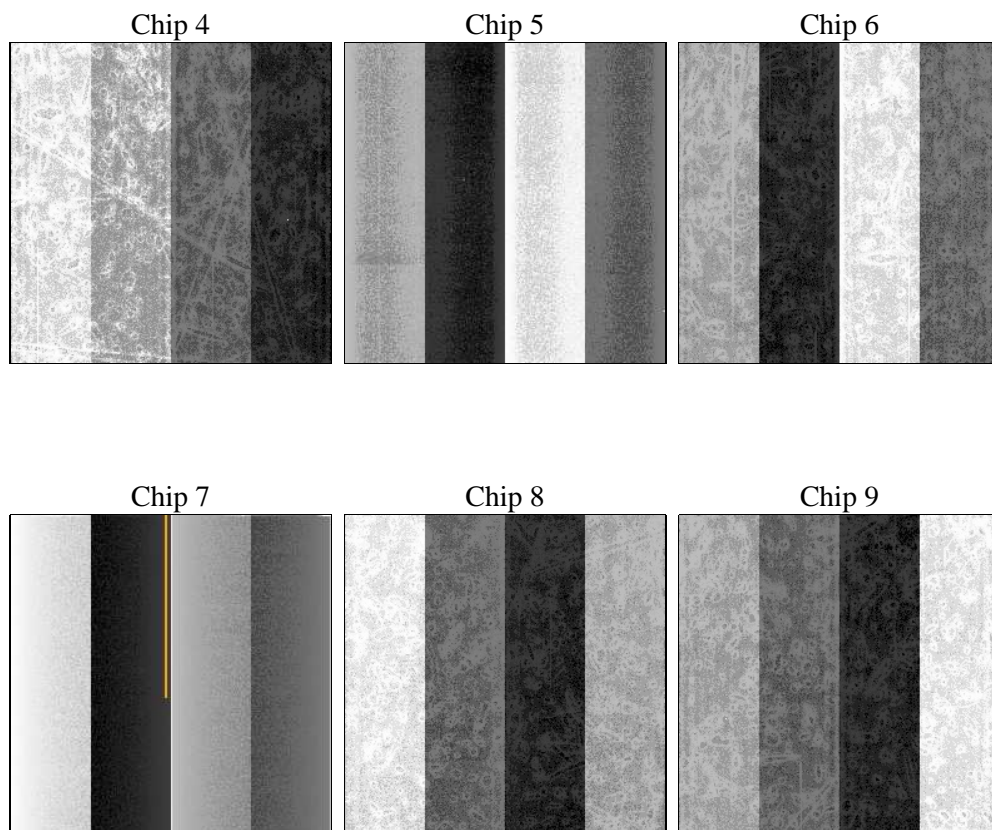
2 OBI

2.1 OBI

2.1.1 Images



2.1.2 Bias



2.1.3 Parameters

obi_num	0	Obi number	sched_exp_time	0.0	[s] Scheduled observation exposure time
ascdsver	8.4.5	Processing system revision	ontime	8460.7999684811	Sum of GTIs [s]
caldsver	4.5.2	 	ontime4	3143.0965517461	Sum of GTIs [s]
date	2012-10-18T03:06:15	Date and time of file creation	ontime5	8460.7999684811	Sum of GTIs [s]
revision	4	Processing version of data	ontime6	3424.31212008	Sum of GTIs [s]
			ontime7	8460.7999684811	Sum of GTIs [s]
			ontime8	3554.7475387156	Sum of GTIs [s]
			ontime9	3308.2239868641	Sum of GTIs [s]
			l1events	1546689	Number of level 1 events

2.1.4 Events

	ccd 4	ccd 5	ccd 6	ccd 7	ccd 8	ccd 9		ccd 4	ccd 5	ccd 6	ccd 7	ccd 8	ccd 9
level 1 events	159081	402617	182174	438067	192600	172150	grade 0 events	77571	80998	86230	98402	91203	81471
rejected events	24794	56971	24000	44777	26848	24363		48%	20%	47%	22%	47%	47%
rejected %	15%	14%	13%	10%	13%	14%	grade 1 events	595	249	407	243	455	468
								0%	0%	0%	0%	0%	0%
							grade 2 events	21744	125137	27282	86766	28826	25658
								13%	31%	14%	19%	14%	14%
							grade 3 events	9015	21024	9905	39815	10712	9702
								5%	5%	5%	9%	5%	5%
							grade 4 events	8792	20823	9812	39777	10705	9360
								5%	5%	5%	9%	5%	5%
							grade 5 events	1569	10146	1720	8614	1988	1669
								0%	2%	0%	1%	1%	0%
							grade 6 events	17165	97664	24945	128530	24306	21596
								10%	24%	13%	29%	12%	12%
							grade 7 events	22630	46576	21873	35920	24405	22226
								14%	11%	12%	8%	12%	12%

2.2 Compared Parameters

Parameter	Planned	Actual
Instrument	ACIS	ACIS
Detector	ACIS-456789	ACIS-456789
Grating	NONE	NONE
Data mode	FAINT	FAINT
Observation mode	SECONDARY	SECONDARY
[deg] Pointing RA	0	32.11412296049341
[deg] Pointing Dec	0	10.97393441181085
[deg] Pointing Roll	0.0	292.9395446315671
[mm] SIM focus pos	-0.684267	-0.6828225247311905
[mm] SIM defocus	0	0.8505141146731063
[mm] SIM translation stage pos	-190.132523	250.4635187648994
[mm] SIM translation stage offset	0	-0.007540371344731511
[s] Observation start time (MET)	154694446.313801	154694445.28909
Observation start date	2002-11-26T10:40:46	2002-11-26T10:40:45
[s] Observation end time (MET)	154716662.164729	154716661.14001
Observation end date	2002-11-26T16:51:02	2002-11-26T16:51:01
Read mode	TIMED	TIMED

Parameter	Planned	Actual
Obspar format version number	7	7
Obspar file type	PREDICTED	ACTUAL
Obspar update status	NONE	UPDATED
On-chip summing requested	N	N
Subarray requested	NONE	NONE
Alternating exposures requested	N	N
[s] Primary exposure time	0.000000	3.2

2.3 Star Slots

2.4 FID Slots

A Summary

A.1 Status

V&V Scientist	Jen Lauer
V&V Date (YYYY-MM-DD)	2012.10.28
V&V Edition	1
V&V Disposition and Status	OK
V&V Charge Time	8.4607999684811

A.2 Comments