

V&V Reference Report

L2 ASCDS Version : 7.6.8

Observation 60859 - L2 Version 001
Chandra X-Ray Center

L2 Processing Date : Jul 21 2006

Contents

1	Front	2
2	OBI	3
2.1	OBI	3
2.1.1	Images	3
2.1.2	Bias	3
2.1.3	Parameters	4
2.1.4	Events	4
2.2	Compared Parameters	5
2.3	Aspect	6
2.4	Star Slots	8
2.5	FID Slots	8
A	Summary	9
A.1	Status	9
A.2	Comments	9

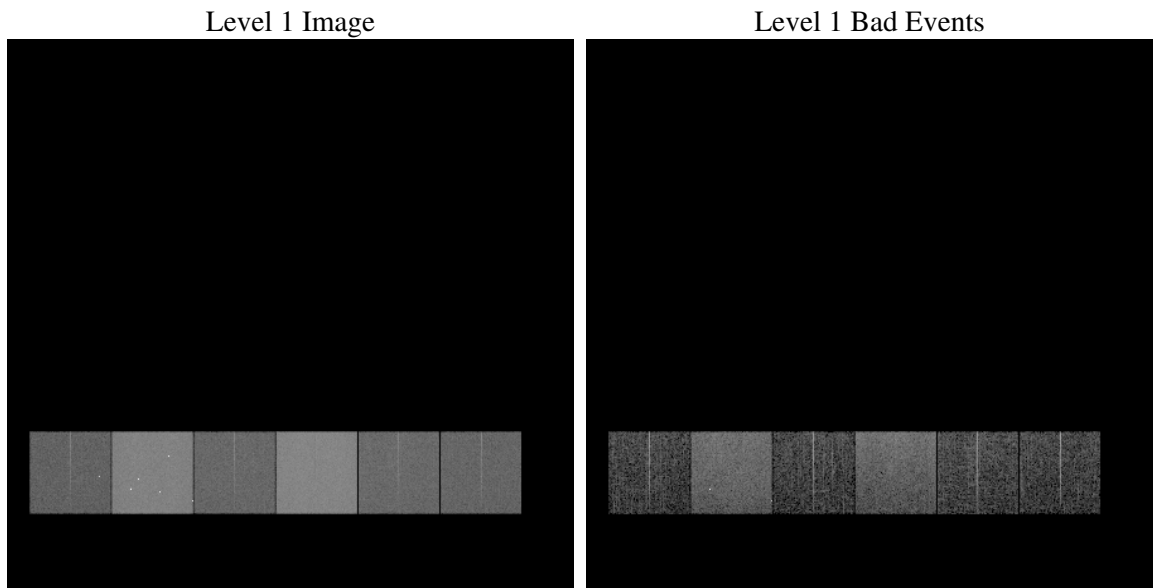
1 Front

seq_num	
obs_id	60859
title	ACIS-456789 diagnostics
observer	CHANDRA engineering request/realtime commanding
object	
dtcycle	0
cycle	P
ra_targ	0.0
dec_targ	0.0
ra_nom	122.94197268582
dec_nom	71.97776349935
roll_nom	198.15300803822
revision	2
ontime	7791.5888310075
livetime	7692.9270416977
ontime4	3076.0860765576
ontime5	7791.6298710108
ontime6	3393.6656905413
ontime7	7791.5888310075
ontime8	3503.9413264692
ontime9	3331.9620532393
l2events	1148962

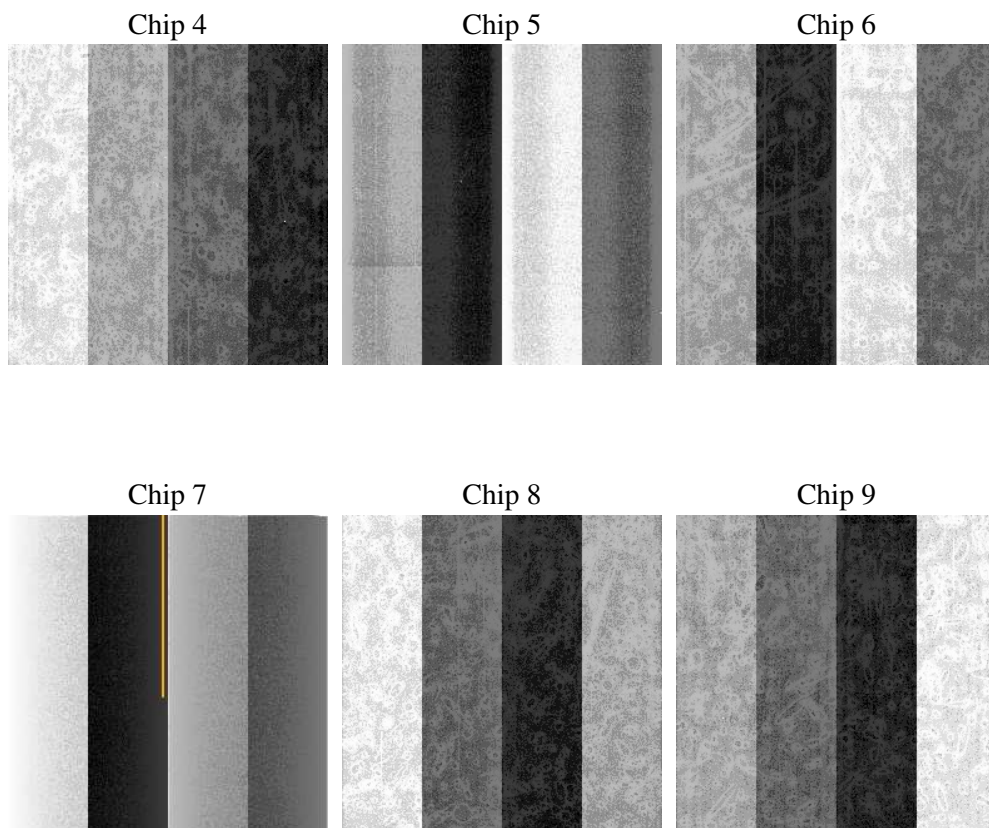
2 OBI

2.1 OBI

2.1.1 Images



2.1.2 Bias



2.1.3 Parameters

obi_num	0
ascdsver	7.6.8
caldsver	3.2.2
date	2006-07-21T03:25:05
revision	2

sched_exp_time	0.0
ontime	7794.6082270145
ontime4	3078.9823525548
ontime5	7794.6082270145
ontime6	3396.6030065417
ontime7	7794.6082270145
ontime8	3506.7965624928
ontime9	3335.0224892497
l1events	1424658

2.1.4 Events

	ccd 4	ccd 5	ccd 6	ccd 7	ccd 8	ccd 9
level 1 events	149165	365245	174606	388978	182956	163708
rejected events	24214	60944	24708	54055	27289	23554
rejected %	16%	16%	14%	13%	14%	14%

	ccd 4	ccd 5	ccd 6	ccd 7	ccd 8	ccd 9
grade 0 events	73123	43457	81844	61977	85957	77620
	49%	11%	46%	15%	46%	47%
grade 1 events	501	497	423	135	427	470
	0%	0%	0%	0%	0%	0%
grade 2 events	19636	140926	25996	100125	27187	24202
	13%	38%	14%	25%	14%	14%
grade 3 events	8282	10352	9233	25270	10010	8659
	5%	2%	5%	6%	5%	5%
grade 4 events	8234	10156	9353	24830	9794	8968
	5%	2%	5%	6%	5%	5%
grade 5 events	1571	6782	1810	6997	1961	1865
	1%	1%	1%	1%	1%	1%
grade 6 events	15823	99546	23611	122868	22865	20854
	10%	27%	13%	31%	12%	12%
grade 7 events	21995	53529	22336	46776	24755	21070
	14%	14%	12%	12%	13%	12%

2.2 Compared Parameters

Parameter	Planned	Actual	Parameter	Planned	Actual
Instrument	ACIS	ACIS	Obspar format version number	6	6
Detector	ACIS-456789	ACIS-456789	Obspar file type	PREDICTED	ACTUAL
Grating	NONE	NONE	Obspar update status	NONE	UPDATED
Data mode	FAINT	FAINT	On-chip summing requested	N	N
Observation mode	SECONDARY	SECONDARY	Subarray requested	NONE	NONE
Pointing RA	0	122.9419726858208	Alternating exposures requested	N	N
Pointing Dec	0	71.97776349935016	Primary exposure time	0.000000	3.2
Pointing Roll	0.0	198.1530080382213			
SIM focus pos (mm)	-0.684267	-0.6828225247311905			
SIM defocus (mm)	0	0.8505141146731063			
SIM translation stage pos (mm)	-190.132523	250.466033080201			
SIM translation stage offset (mm)	0	-0.01005468664627074			
Observation start time	160827460.270181	160827459.24546			
Observation start date	2003-02-05T10:17:40	2003-02-05T10:17:39			
Observation end time	160837175.220589	160837174.19587			
Observation end date	2003-02-05T12:59:35	2003-02-05T12:59:34			
Read mode	TIMED	TIMED			

2.3 Aspect

2.4 Star Slots

2.5 FID Slots

A Summary

A.1 Status

V&V Scientist	Jen Lauer
V&V Date (YYYY-MM-DD)	2006.07.21
V&V Edition	1
V&V Disposition and Status	OK
V&V Charge Time	7.79158883

A.2 Comments

The ACIS focal plane temperature increases by a degree during the course of the observation.