

# V&V Reference Report

## L2 ASCDS Version : 8.4.5

Observation 60559 - L2 Version 3  
Chandra X-Ray Center

L2 Processing Date : Nov 3 2012

## Contents

<b>1</b>	<b>Front</b>	<b>2</b>
<b>2</b>	<b>OBI</b>	<b>3</b>
2.1	OBI . . . . .	3
2.1.1	Images . . . . .	3
2.1.2	Bias . . . . .	3
2.1.3	Parameters . . . . .	4
2.1.4	Events . . . . .	4
2.2	Compared Parameters . . . . .	5
2.3	Star Slots . . . . .	6
2.4	FID Slots . . . . .	6
<b>A</b>	<b>Summary</b>	<b>7</b>
A.1	Status . . . . .	7
A.2	Comments . . . . .	7

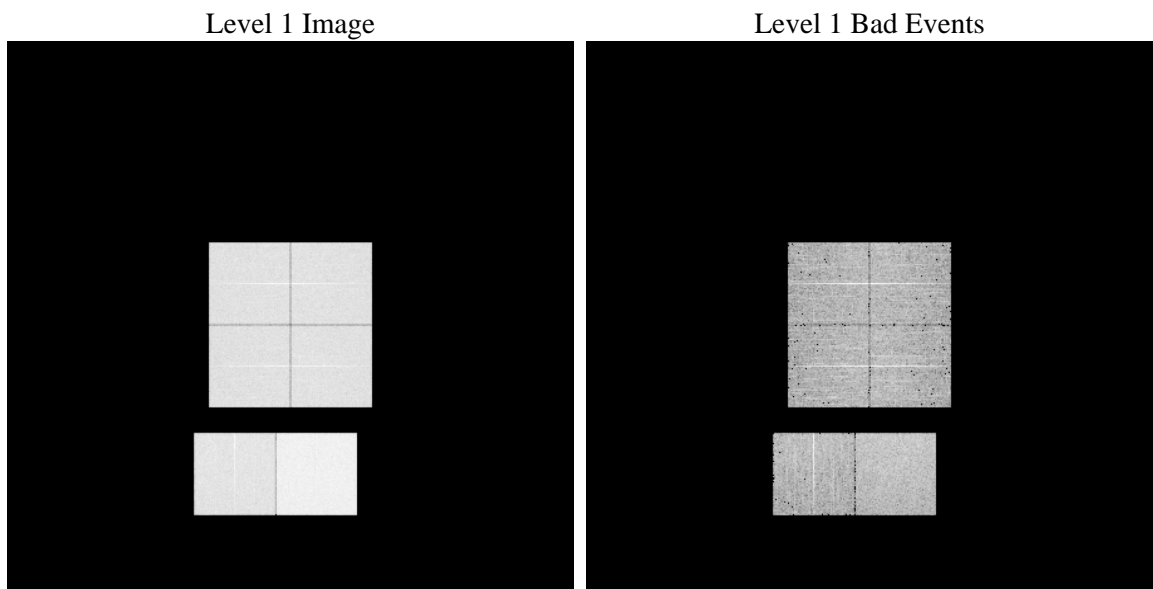
# 1 Front

seq_num	&#160	Sequence number
obs_id	60559	Observation id
title	ACIS-012367 diagnostics	Proposal title
observer	CHANDRA engineering request/realtime commanding	Principal investig
object	&#160	Source name
dtcycle	0	&#160
cycle	P	events from which exps? Prim/Second/Both
ra_targ	0.0	Observer's specified target RA [deg]
dec_targ	0.0	Observer's specified target Dec [deg]
ra_nom	341.02991743623	Nominal RA [deg]
dec_nom	-16.99974274311	Nominal Dec [deg]
roll_nom	327.70591980683	Nominal Roll [deg]
revision	3	Processing version of data
ontime	8385.702162683	Sum of GTIs [s]
livetime	8279.5173526355	Livetime [s]
ontime0	5118.7595877647	Sum of GTIs [s]
ontime1	5118.71860829	Sum of GTIs [s]
ontime2	4930.7008446157	Sum of GTIs [s]
ontime3	5030.0688791573	Sum of GTIs [s]
ontime6	5386.5767845213	Sum of GTIs [s]
ontime7	8385.702162683	Sum of GTIs [s]
l2events	1252185	Number of level 2 events

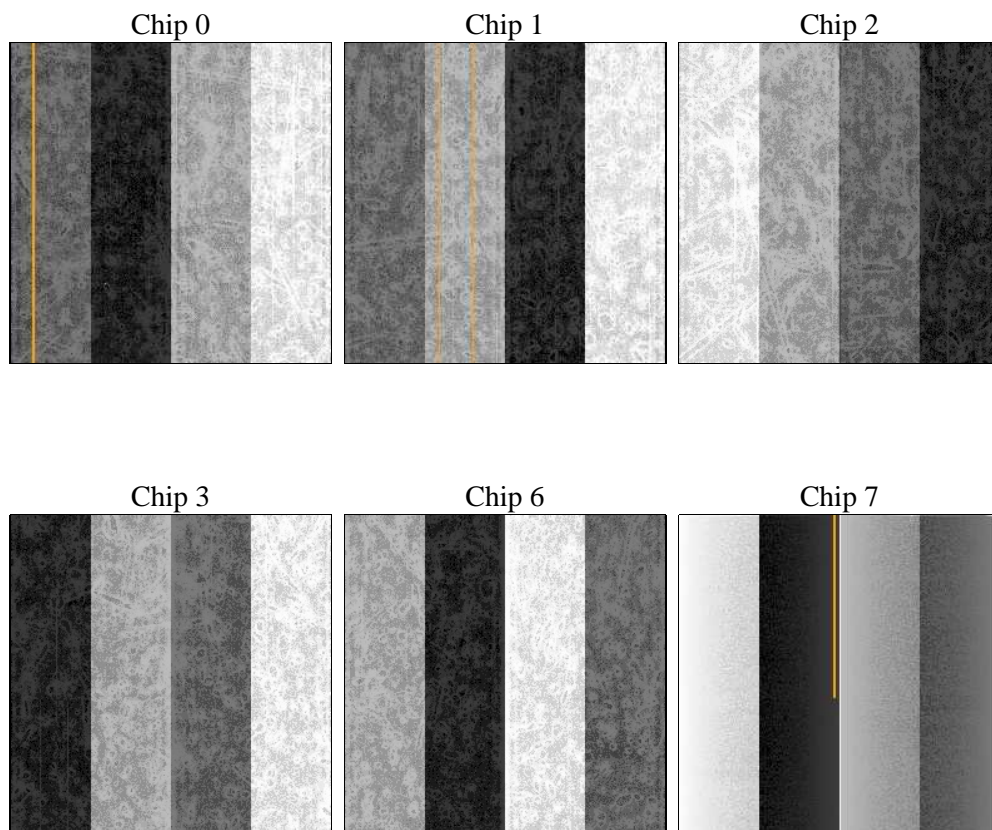
## 2 OBI

### 2.1 OBI

#### 2.1.1 Images



#### 2.1.2 Bias



### 2.1.3 Parameters

obi_num	0	Obi number	sched_exp_time	0.0	[s] Scheduled observation exposure time
ascdsver	8.4.5	Processing system revision	ontime	8385.702162683	Sum of GTIs [s]
caldsver	4.5.2	&#160	ontime0	5118.7595877647	Sum of GTIs [s]
date	2012-11-04T00:17:56	Date and time of file creation	ontime1	5118.71860829	Sum of GTIs [s]
revision	3	Processing version of data	ontime2	4930.7008446157	Sum of GTIs [s]
			ontime3	5030.0688791573	Sum of GTIs [s]
			ontime6	5386.5767845213	Sum of GTIs [s]
			ontime7	8385.702162683	Sum of GTIs [s]
			l1events	1539397	Number of level 1 events

### 2.1.4 Events

	ccd 0	ccd 1	ccd 2	ccd 3	ccd 6	ccd 7		ccd 0	ccd 1	ccd 2	ccd 3	ccd 6	ccd 7
level 1 events	227336	228536	223204	228184	250066	382071	grade 0 events	106811	106104	105726	108424	115703	84393
rejected events	35076	36052	35692	36554	37747	47855		46%	46%	47%	47%	46%	22%
rejected %	15%	15%	15%	16%	15%	12%	grade 1 events	592	521	655	603	619	231
								0%	0%	0%	0%	0%	0%
							grade 2 events	33868	34627	31998	33043	36516	74021
								14%	15%	14%	14%	14%	19%
							grade 3 events	12489	12413	12182	12426	13395	33833
								5%	5%	5%	5%	5%	8%
							grade 4 events	12513	12266	12299	12466	13363	33046
								5%	5%	5%	5%	5%	8%
							grade 5 events	2296	2253	2086	2366	2581	8349
								1%	0%	0%	1%	1%	2%
							grade 6 events	28501	28864	26747	26968	34960	111880
								12%	12%	11%	11%	13%	29%
							grade 7 events	30266	31488	31511	31888	32929	36318
								13%	13%	14%	13%	13%	9%

## 2.2 Compared Parameters

Parameter	Planned	Actual	Parameter	Planned	Actual
Instrument	ACIS	ACIS	Obspar format version number	7	7
Detector	ACIS-012367	ACIS-012367	Obspar file type	PREDICTED	ACTUAL
Grating	NONE	NONE	Obspar update status	NONE	UPDATED
Data mode	FAINT	FAINT	On-chip summing requested	N	N
Observation mode	SECONDARY	SECONDARY	Subarray requested	NONE	NONE
[deg] Pointing RA	0	341.0299174362268	Alternating exposures requested	N	N
[deg] Pointing Dec	0	-16.99974274311008	[s] Primary exposure time	0.000000	3.2
[deg] Pointing Roll	0.0	327.7059198068252			
[mm] SIM focus pos	-0.782348	-0.6828225247311905			
[mm] SIM defocus	0	0.8505141146731063			
[mm] SIM translation stage pos	-233.592463	250.466033080201			
[mm] SIM translation stage offset	0	-0.01005468664627074			
[s] Observation start time (MET)	179598636.616069	179598635.59134			
Observation start date	2003-09-10T16:30:37	2003-09-10T16:30:35			
[s] Observation end time (MET)	179622560.117095	179622559.09237			
Observation end date	2003-09-10T23:09:20	2003-09-10T23:09:19			
Read mode	TIMED	TIMED			

## **2.3 Star Slots**

## **2.4 FID Slots**

## **A Summary**

### **A.1 Status**

V&V Scientist	Jen Lauer
V&V Date (YYYY-MM-DD)	2012.12.06
V&V Edition	1
V&V Disposition and Status	OK
V&V Charge Time	8.385702162683

### **A.2 Comments**