

# V&V Reference Report

## L2 ASCDS Version : 7.6.7.1

Observation 6049 - L2 Version 002  
Chandra X-Ray Center

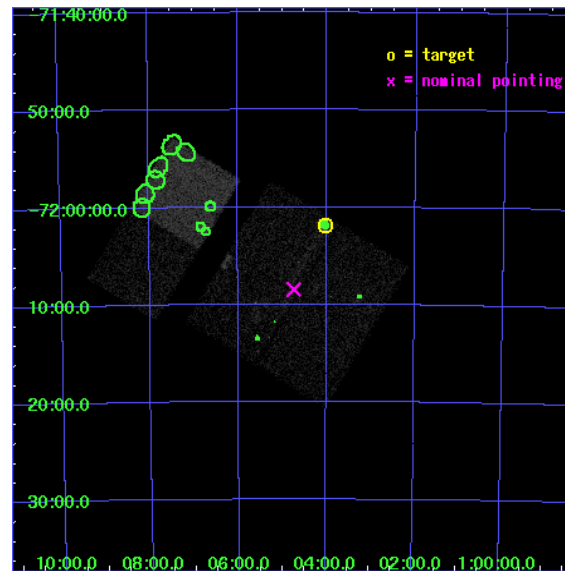
L2 Processing Date : Apr 8 2006

## Contents

<b>1</b>	<b>Front</b>	<b>2</b>
<b>2</b>	<b>OBI</b>	<b>3</b>
2.1	OBI . . . . .	3
2.1.1	Images . . . . .	3
2.1.2	Bias . . . . .	3
2.1.3	Parameters . . . . .	4
2.1.4	Events . . . . .	4
2.2	Compared Parameters . . . . .	5
2.3	Aspect . . . . .	6
2.4	Star Slots . . . . .	9
2.4.1	Slot 3 . . . . .	9
2.4.2	Slot 4 . . . . .	10
2.4.3	Slot 5 . . . . .	11
2.4.4	Slot 6 . . . . .	12
2.4.5	Slot 7 . . . . .	13
2.5	FID Slots . . . . .	14
2.5.1	Slot 0 . . . . .	14
2.5.2	Slot 1 . . . . .	15
2.5.3	Slot 2 . . . . .	16
<b>3</b>	<b>Point Sources</b>	<b>17</b>
<b>A</b>	<b>Summary</b>	<b>18</b>
A.1	Status . . . . .	18
A.2	Comments . . . . .	18

# 1 Front

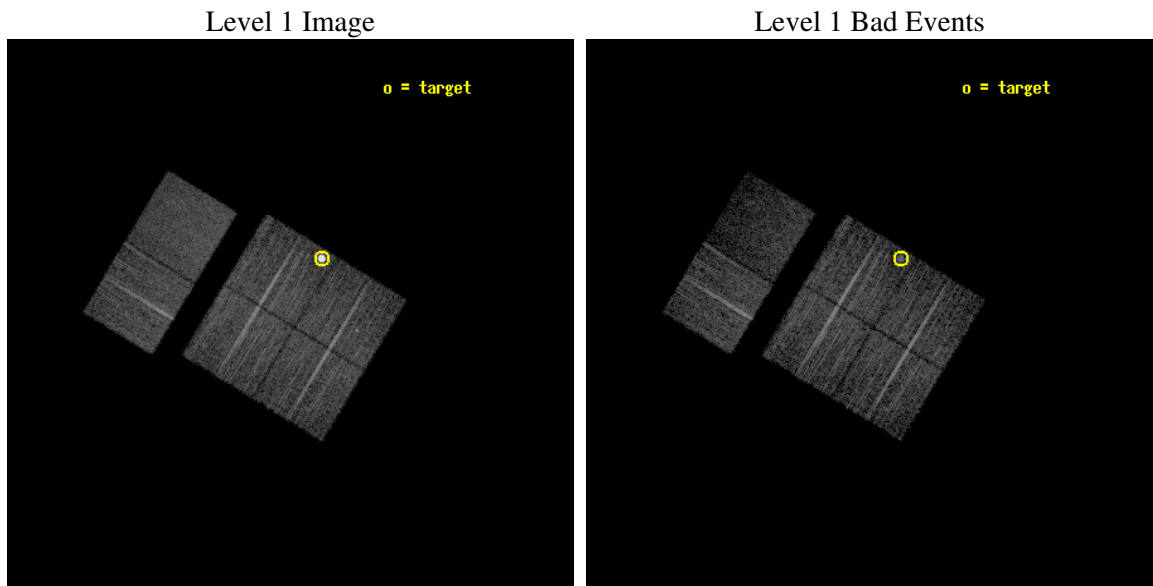
seq_num	590376
obs_id	6049
title	AO6A ACIS-I Calibration Observations of E0102-72
observer	Dr. CXC Calibration
object	E0102-72[I3,-120,-7,0.5,0]
dtcycle	0
cycle	P
ra_targ	16.01
dec_targ	-72.032028
ra_nom	16.184253392894
dec_nom	-72.140815927764
roll_nom	301.30541101312
revision	2
ontime	7673.5590011179
livetime	7576.3917765833
ontime0	7673.5590011179
ontime1	7673.5590011179
ontime2	7673.5590209961
ontime3	7673.5590011179
ontime6	7673.5590209961
ontime7	7673.5590011179
l2events	57962



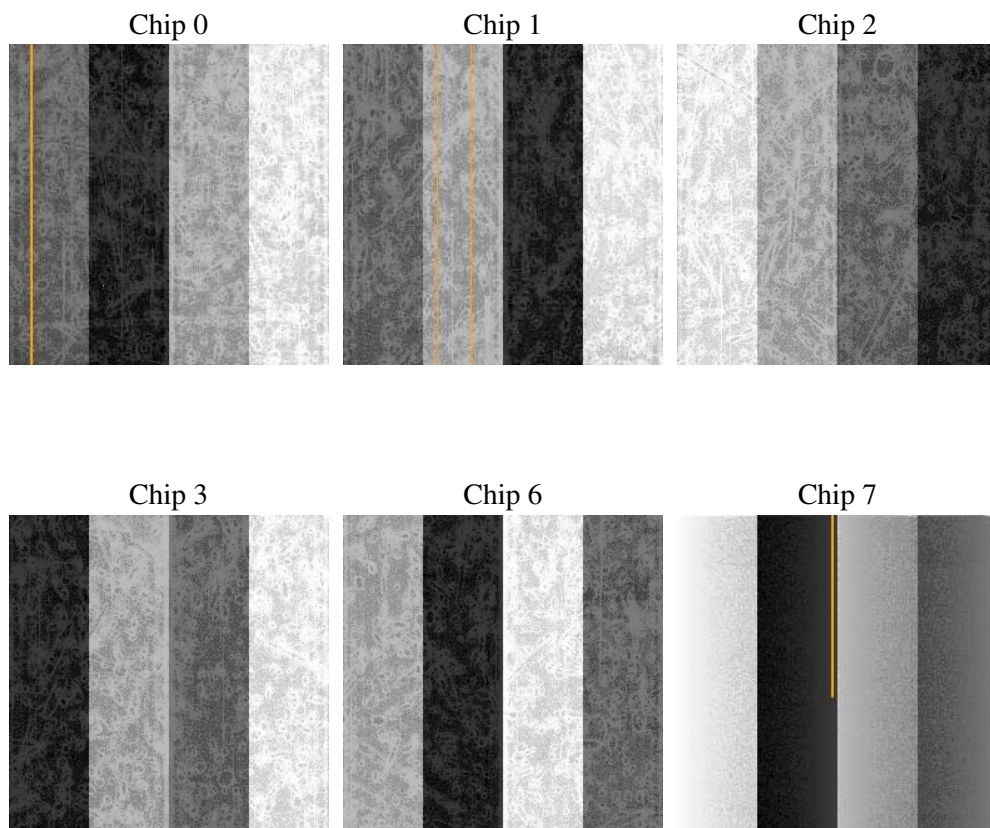
## 2 OBI

### 2.1 OBI

#### 2.1.1 Images



#### 2.1.2 Bias



### 2.1.3 Parameters

obi_num	0
ascdsver	7.6.7.1
caldbver	3.2.1
date	2006-04-08T19:30:20
revision	2

sched_exp_time	7500.000000
ontime	7677.946975559
ontime0	7677.9469456673
ontime1	7677.946975559
ontime2	7677.9469954371
ontime3	7677.946975559
ontime6	7677.9469655454
ontime7	7677.946975559
l1events	283440

### 2.1.4 Events

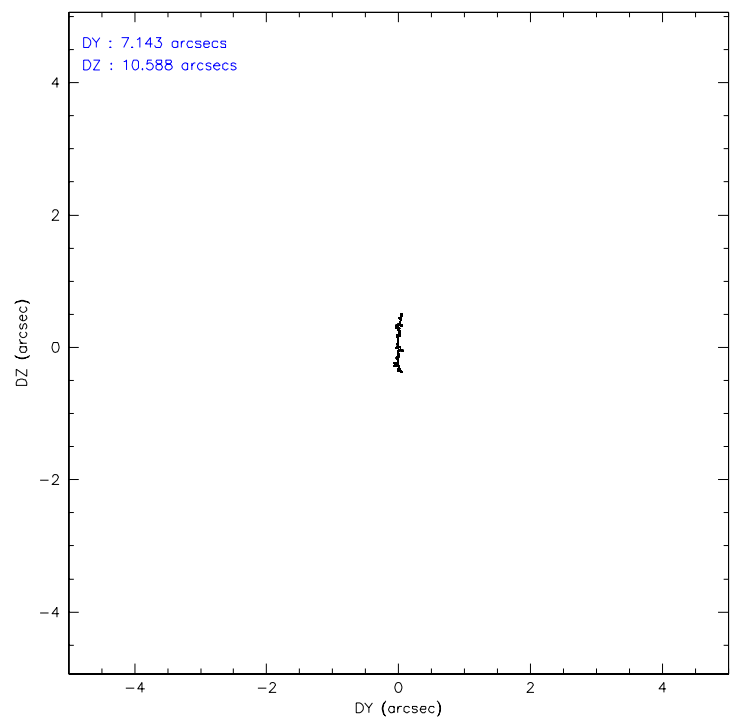
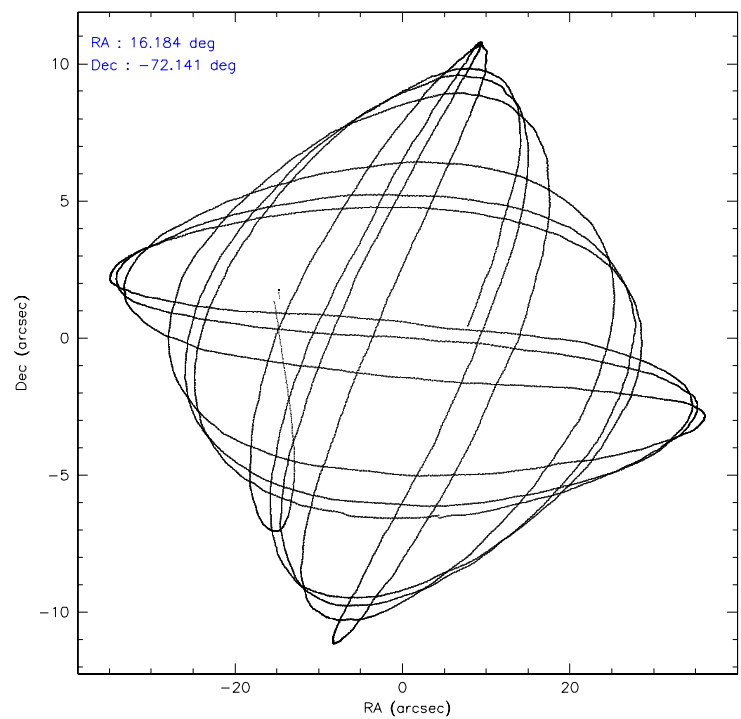
	ccd 0	ccd 1	ccd 2	ccd 3	ccd 6	ccd 7
level 1 events	41921	41617	47587	65684	45401	41230
rejected events	37410	36436	42543	41336	40958	22429
rejected %	89%	87%	89%	62%	90%	54%

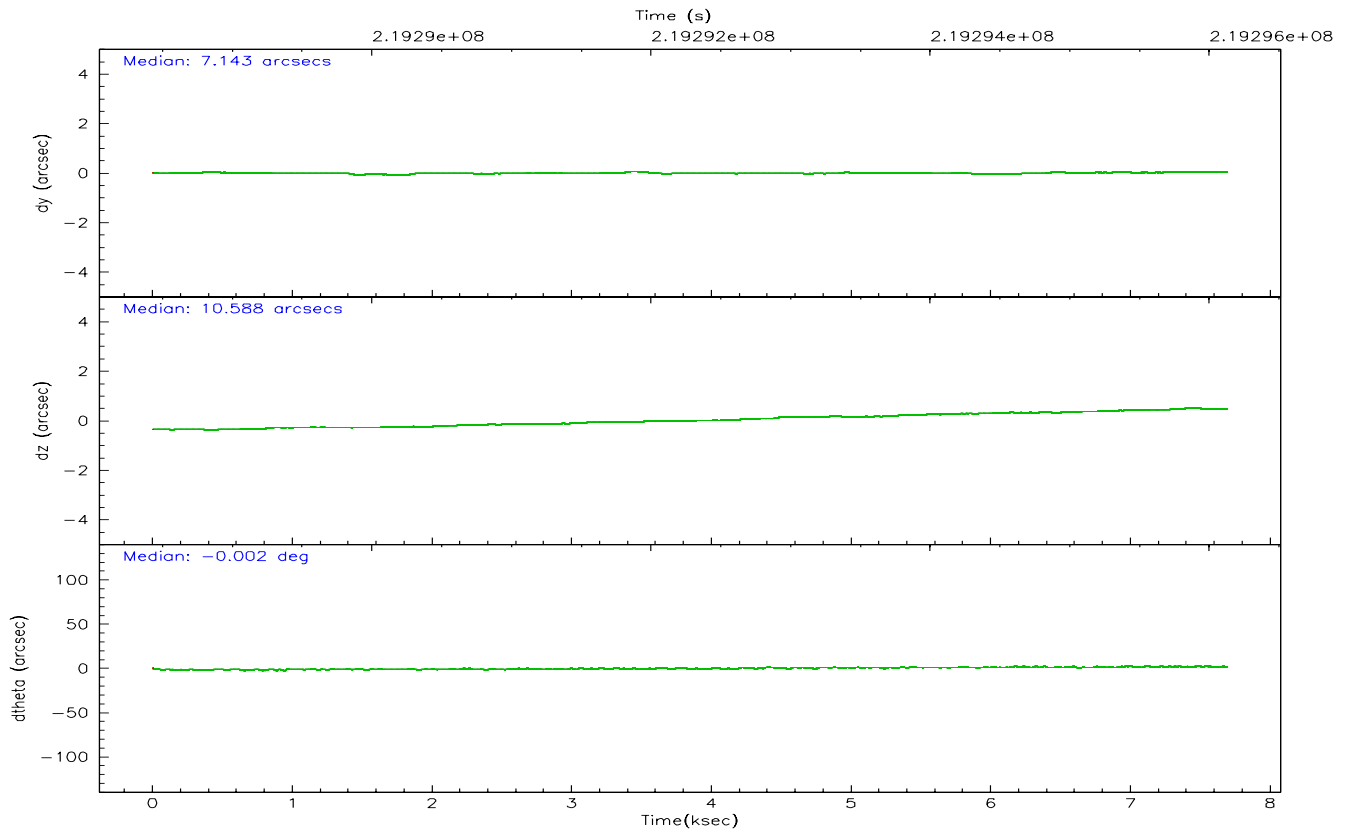
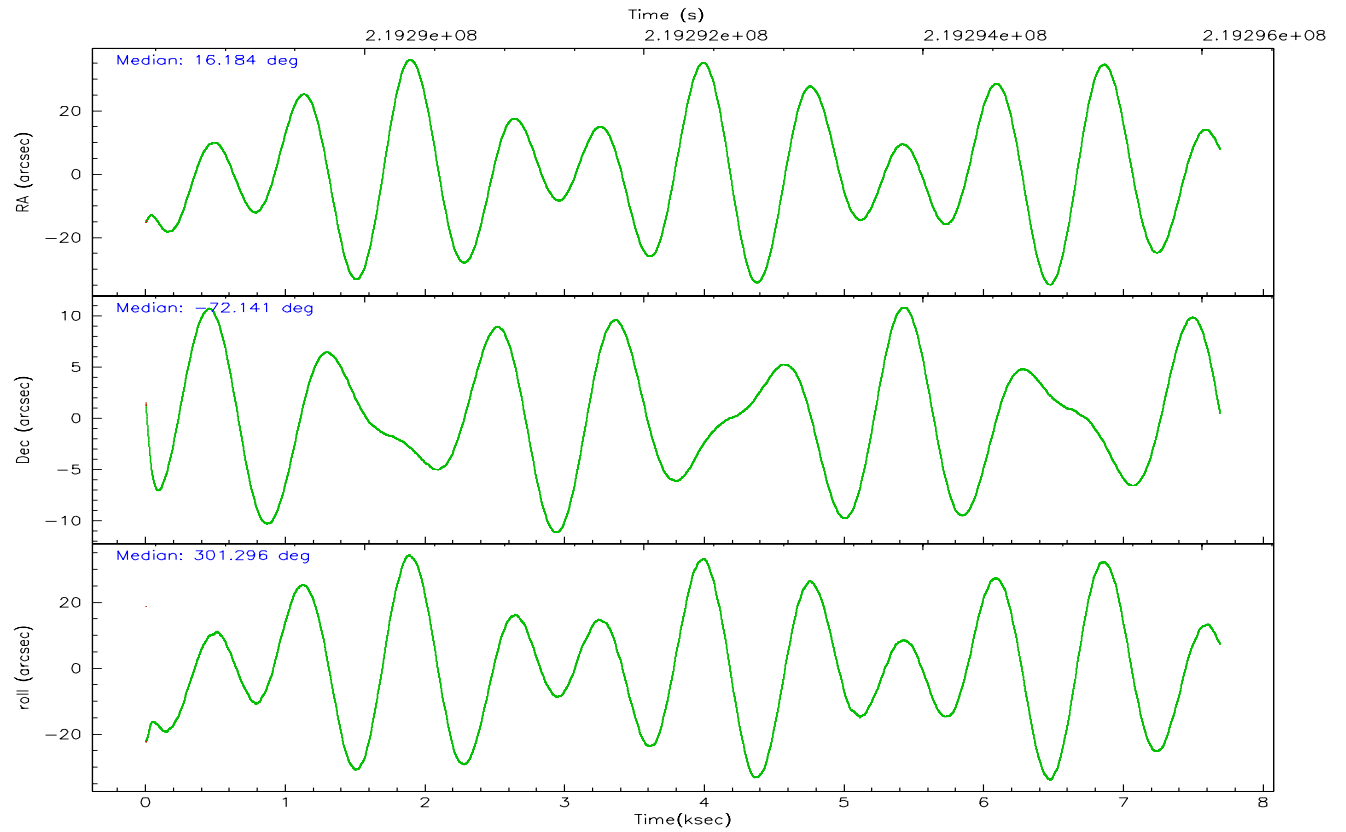
	ccd 0	ccd 1	ccd 2	ccd 3	ccd 6	ccd 7
grade 0 events	1731	2137	2364	19273	1680	1298
	4%	5%	4%	29%	3%	3%
grade 1 events	26	25	26	167	21	24
	0%	0%	0%	0%	0%	0%
grade 2 events	1020	1042	983	2400	1005	4923
	2%	2%	2%	3%	2%	11%
grade 3 events	506	537	490	881	461	1214
	1%	1%	1%	1%	1%	2%
grade 4 events	436	540	503	851	490	1167
	1%	1%	1%	1%	1%	2%
grade 5 events	1334	1427	1186	1609	1550	3311
	3%	3%	2%	2%	3%	8%
grade 6 events	820	925	708	953	809	10205
	1%	2%	1%	1%	1%	24%
grade 7 events	36048	34984	41327	39550	39385	19088
	85%	84%	86%	60%	86%	46%

## 2.2 Compared Parameters

Parameter	Planned	Actual	Parameter	Planned	Actual
Instrument	ACIS	ACIS	Obspar format version number	6	6
Detector	ACIS-012367	ACIS-012367	Obspar file type	PREDICTED	ACTUAL
Grating	NONE	NONE	Obspar update status	NONE	UPDATED
Data mode	VFAINT	VFAINT	On-chip summing requested	N	N
Observation mode	POINTING	POINTING	Subarray requested	NONE	NONE
Pointing RA	16.105932	16.18425339289412	Alternating exposures requested	N	N
Pointing Dec	-72.127850	-72.14081592776432	Primary exposure time	0.000000	3.2
Pointing Roll	301.022193	301.3054110131162			
Window start time	215654464.184000	215654464.184000			
Window stop time	220838464.184000	220838464.184000			
SIM focus pos (mm)	-0.782348	-0.7809083437167272			
SIM defocus (mm)	0	0.001439871863259334			
SIM translation stage pos (mm)	-233.592463	-233.5874344608287			
SIM translation stage offset (mm)	0	-0.005018542100998502			
Observation start time	219288626.184000	219287556.25076			
Observation start date	2004-12-13T01:29:22	2004-12-13T01:12:36			
Observation end time	219296126.184000	219296259.52615			
Observation end date	2004-12-13T03:34:22	2004-12-13T03:37:39			
Read mode	TIMED	TIMED			

## 2.3 Aspect





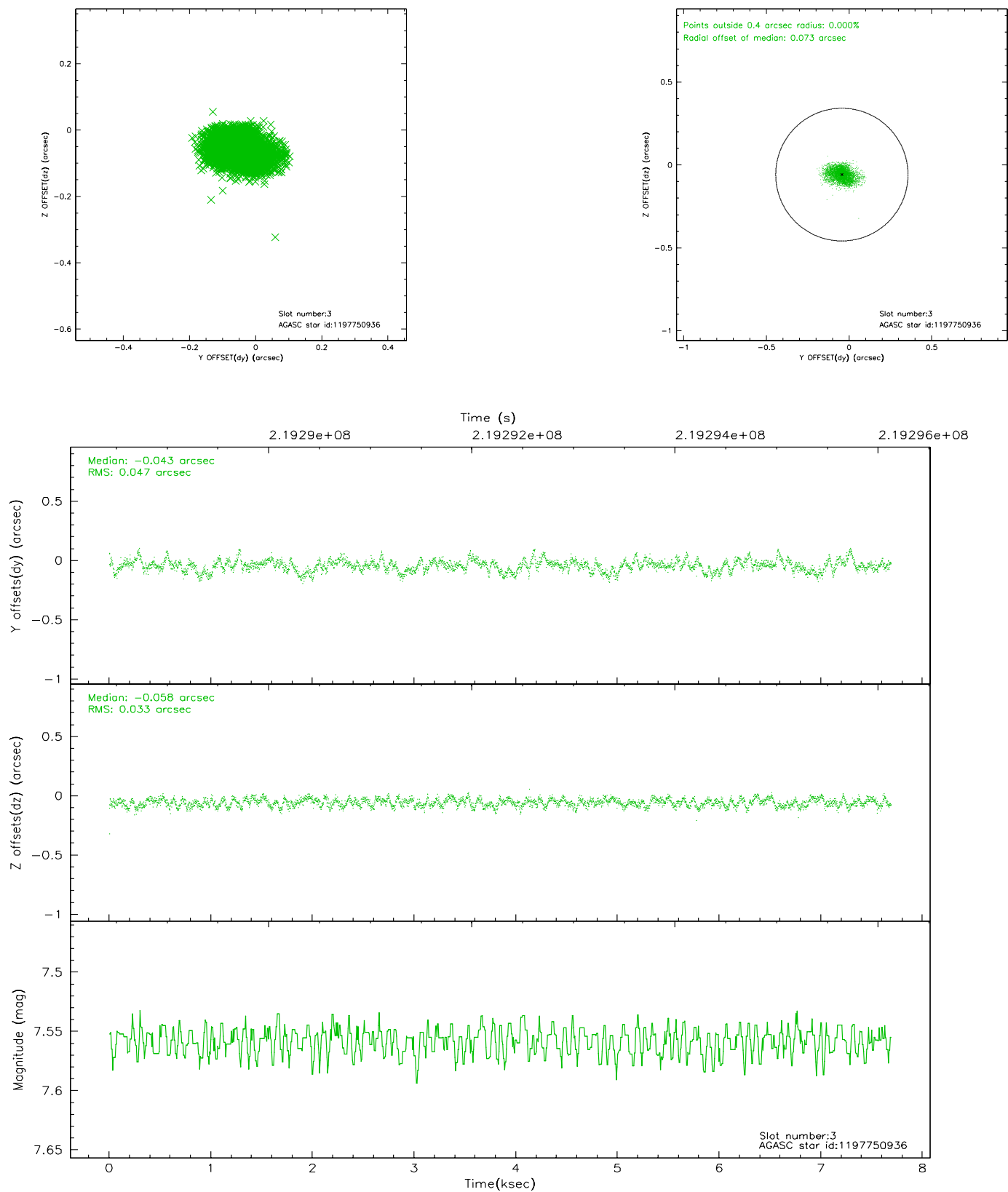
### Slot Statistics

slot	status	id	mag	n_pts	med_dy	med_dz	dr1	dr2	ra	dec	mean_y	mean_z
0	FID	ACIS-I-1	7.24	1874	0.008	0.009	0.016	0.025	0.000000	0.000000	932.53	-834.11
1	FID	ACIS-I-5	7.23	1875	-0.146	0.031	0.010	0.016	0.000000	0.000000	-1815.30	1063.06
2	FID	ACIS-I-6	7.26	1875	0.047	0.030	0.010	0.015	0.000000	0.000000	397.34	1708.38
3	GUIDE	1197750936	7.56	3750	-0.043	-0.058	0.060	0.103	15.387940	-71.549550	-2200.90	369.07
4	GUIDE	1197884536	8.50	3746	0.055	0.048	0.069	0.113	17.160729	-71.835289	-283.90	1552.12
5	GUIDE	1197884712	8.31	3750	0.079	0.064	0.058	0.094	16.087398	-72.252690	375.26	-248.38
6	GUIDE	1197885328	7.23	3750	-0.000	-0.059	0.053	0.083	16.283090	-71.733943	-1111.44	902.38
7	GUIDE	1198189696	7.37	3749	-0.089	0.008	0.059	0.095	15.223750	-72.697522	1277.21	-1869.33

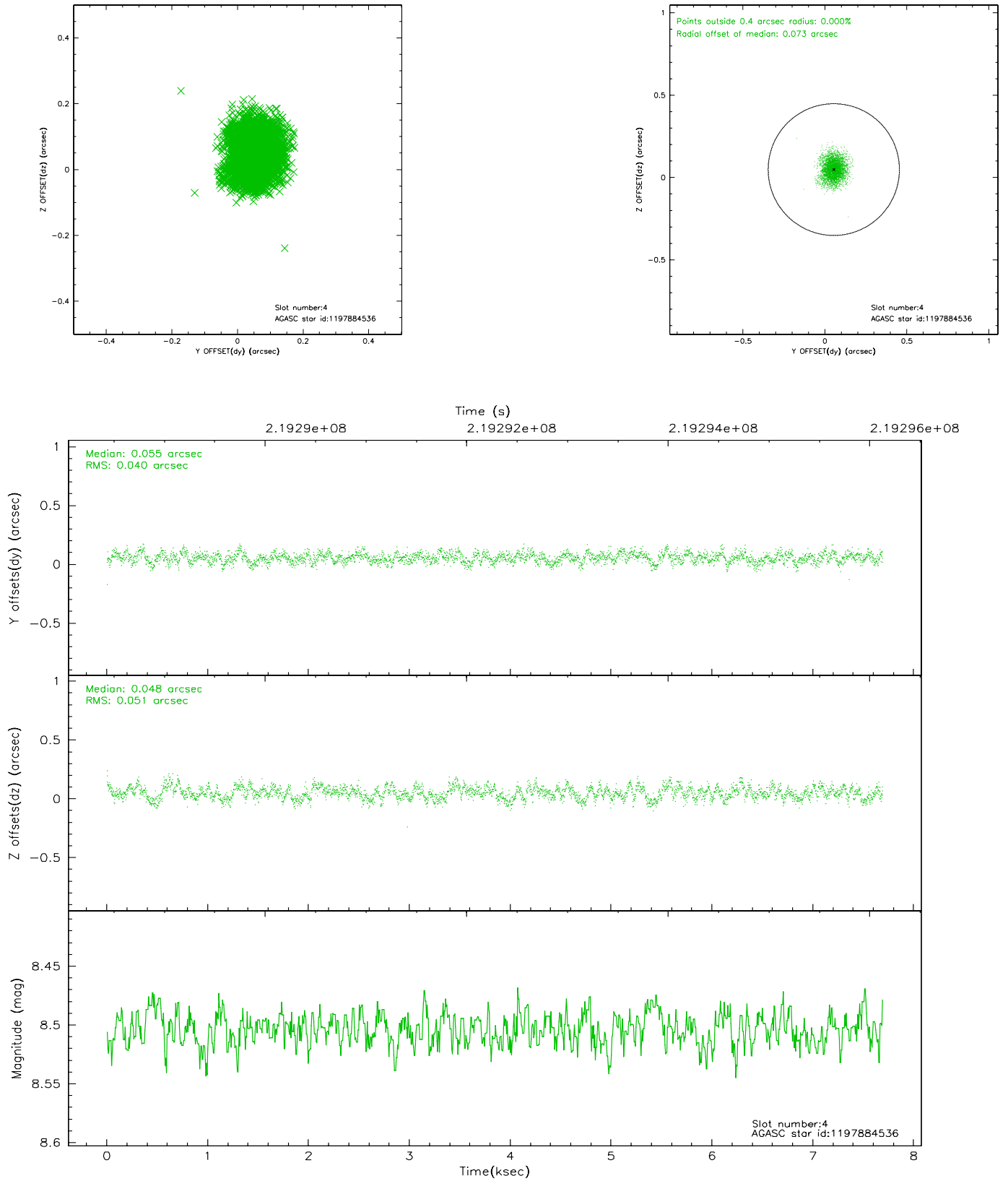


## 2.4 Star Slots

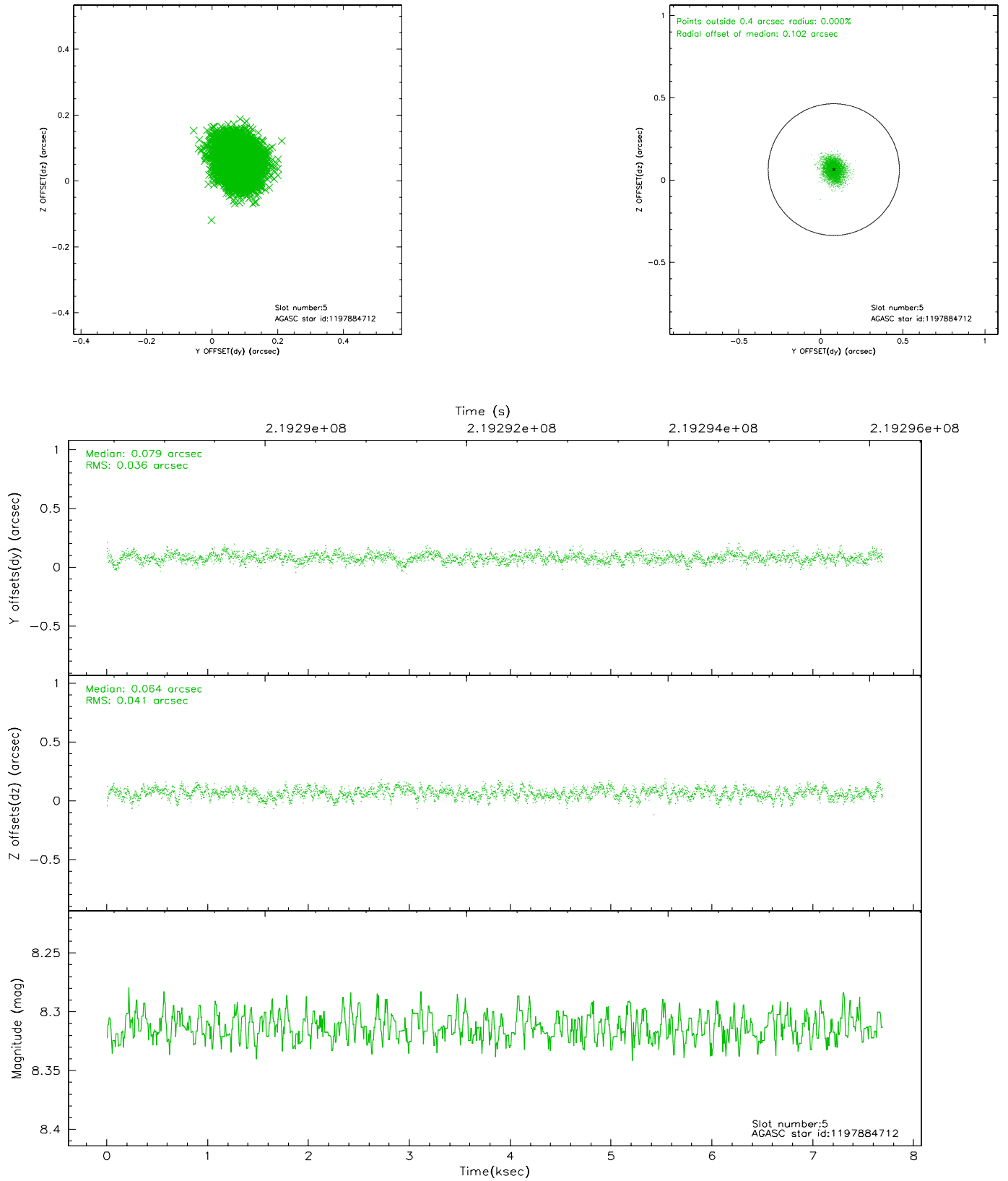
### 2.4.1 Slot 3



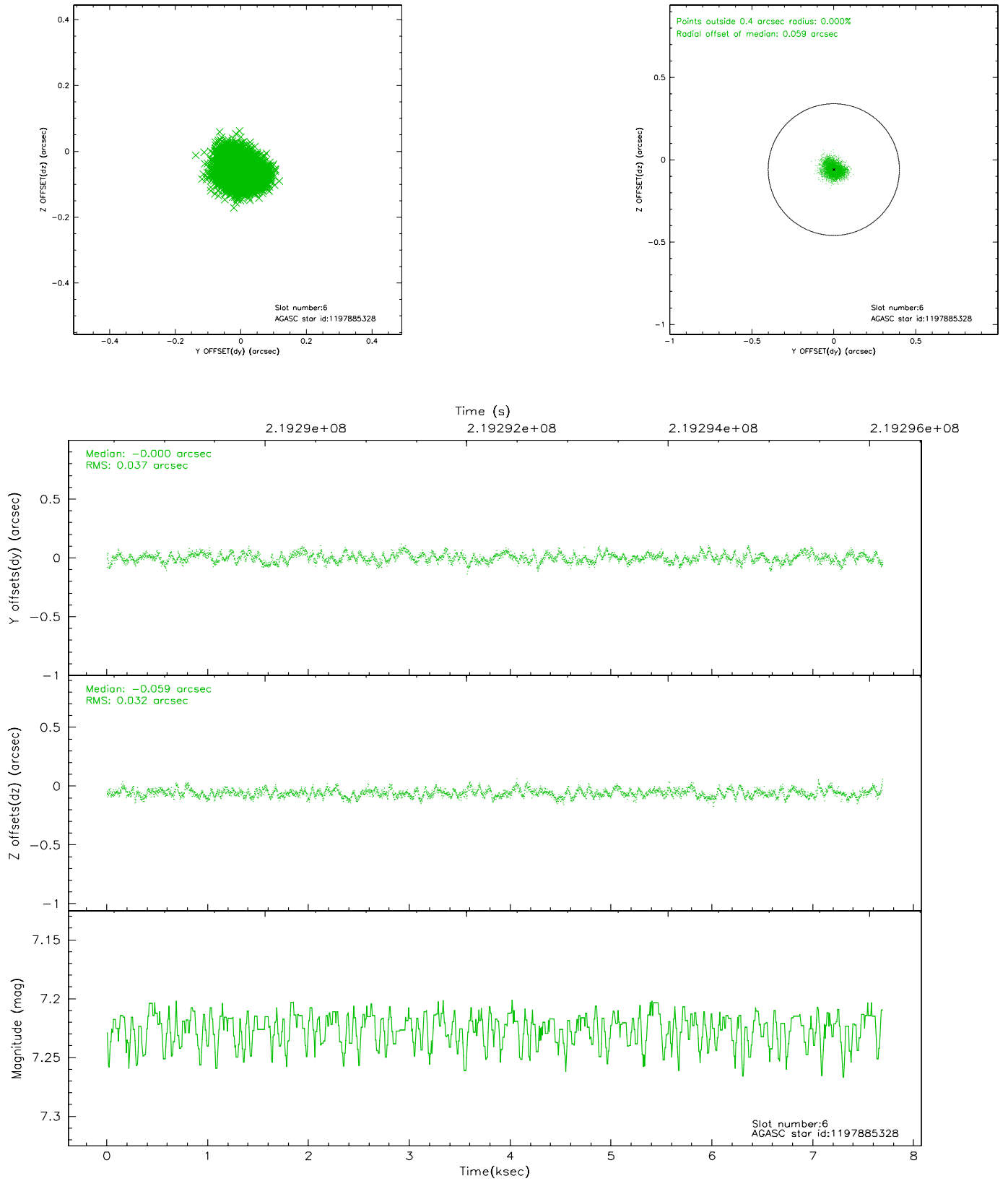
## 2.4.2 Slot 4



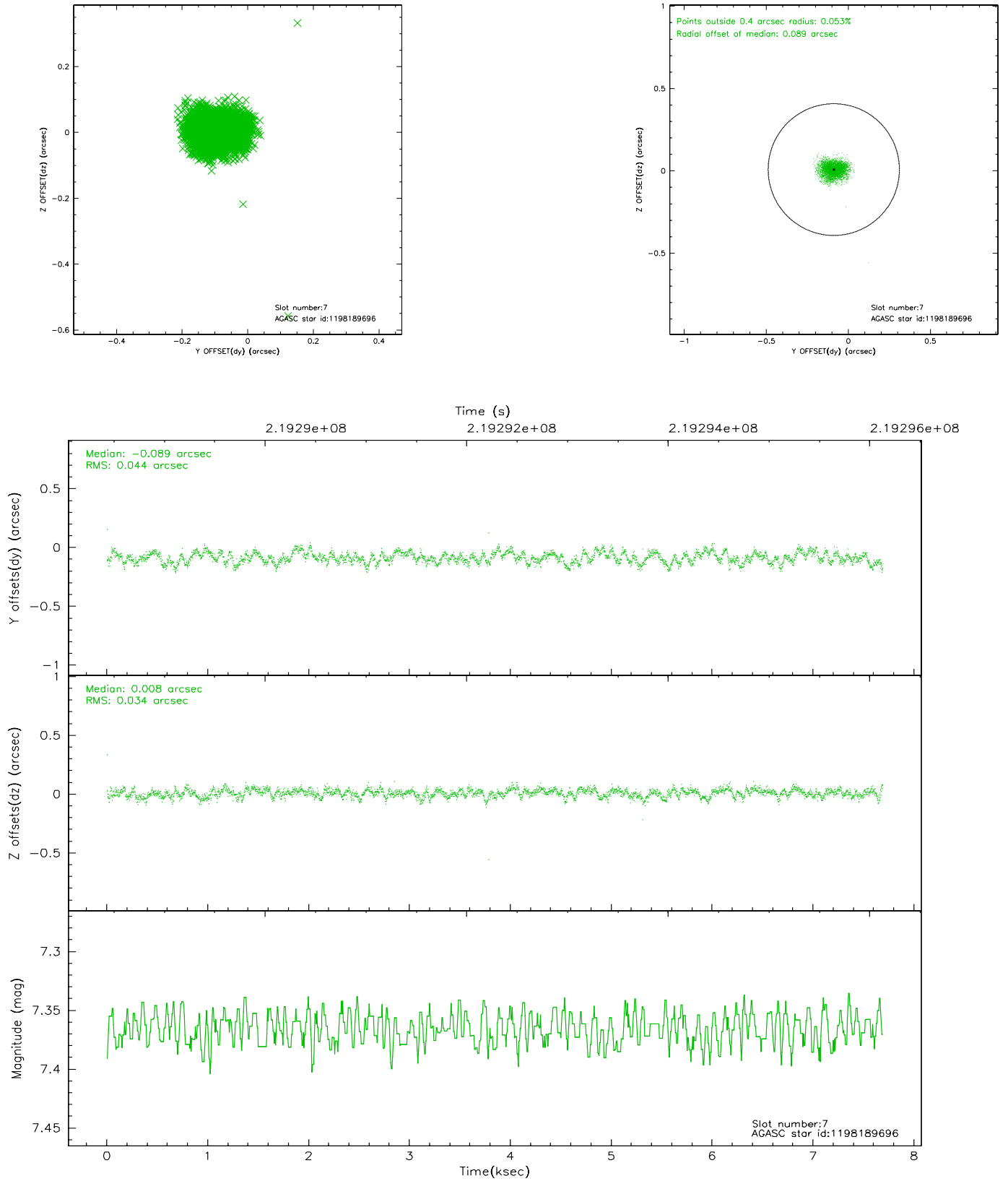
### 2.4.3 Slot 5



## 2.4.4 Slot 6

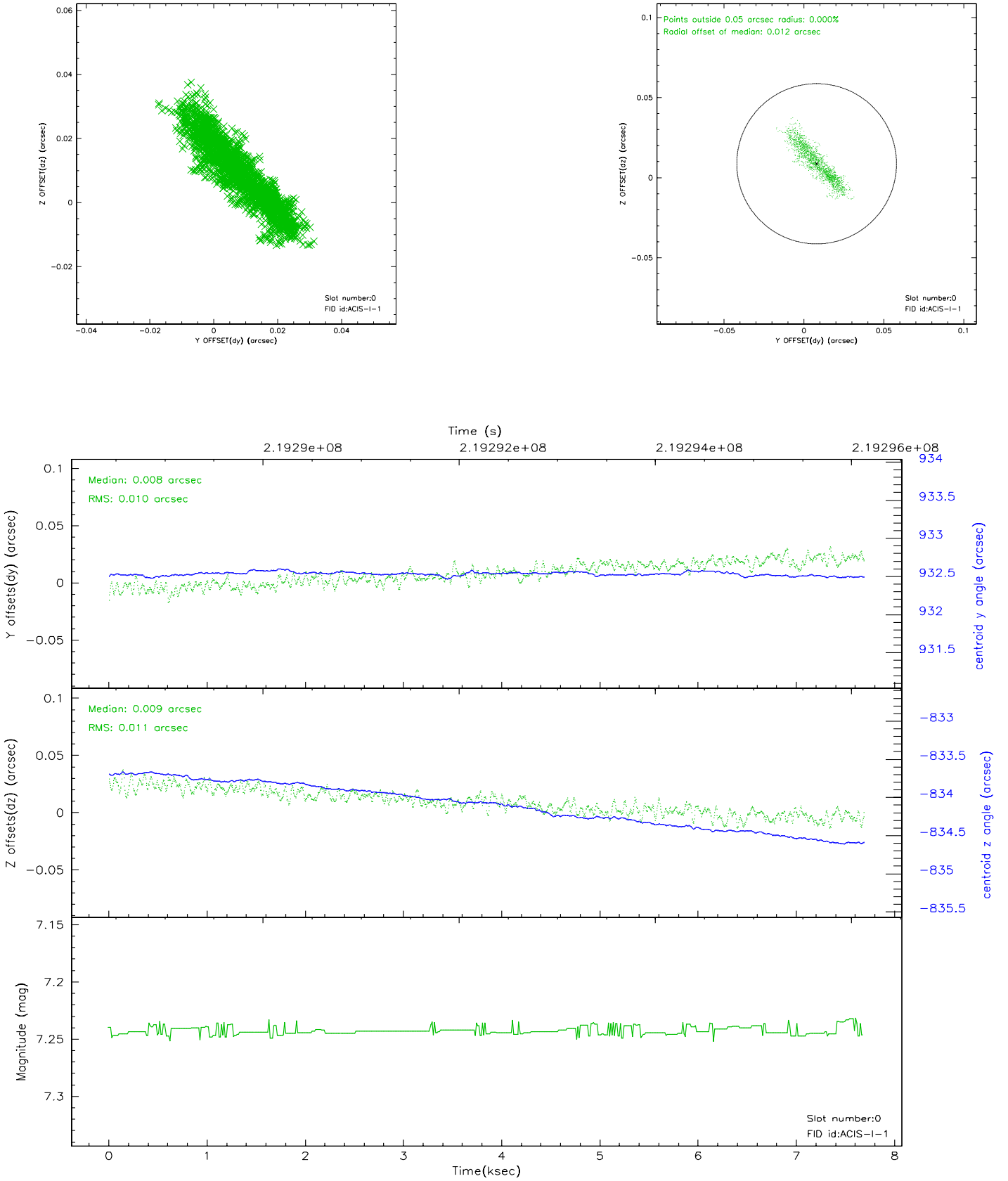


## 2.4.5 Slot 7

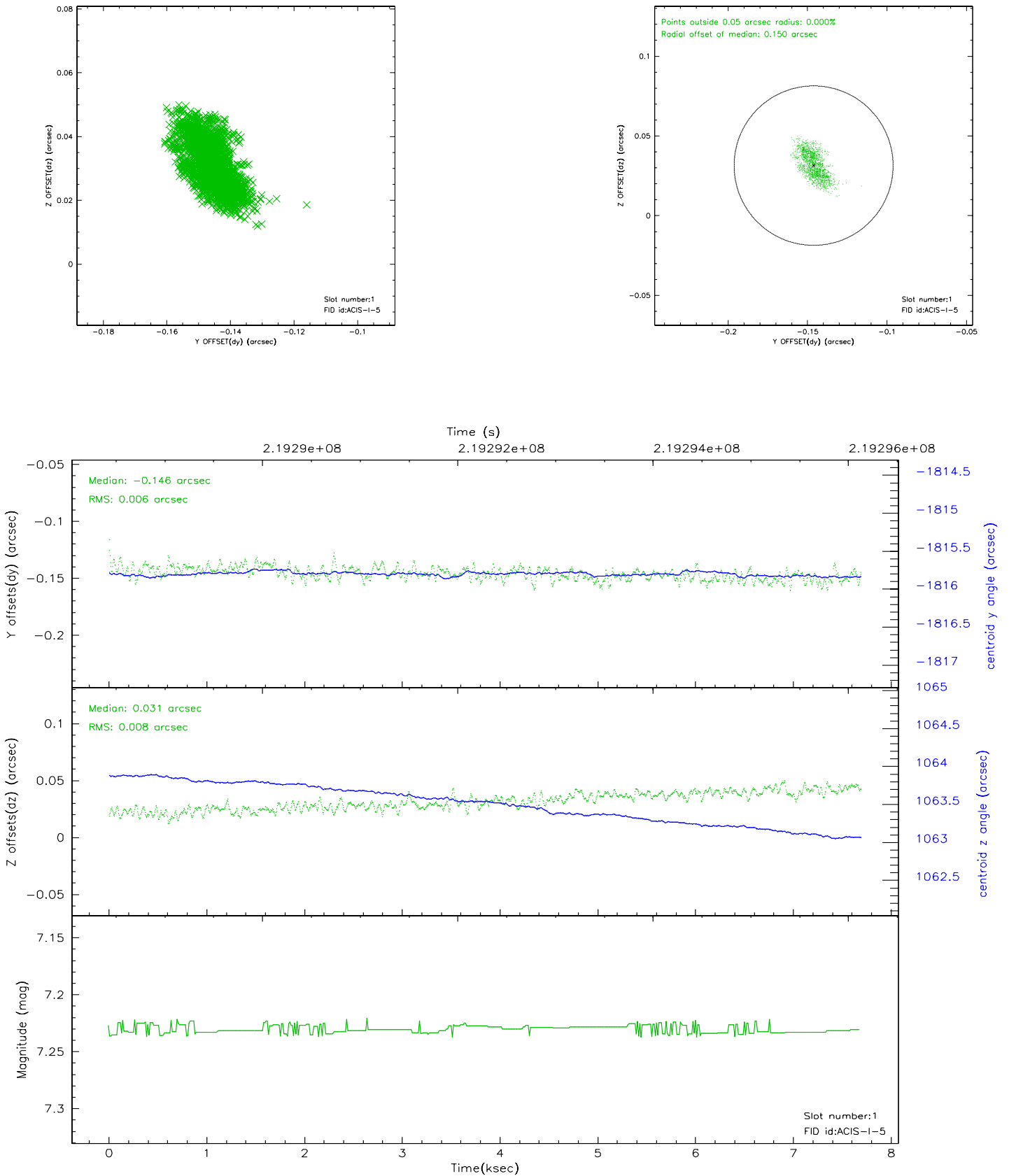


## 2.5 FID Slots

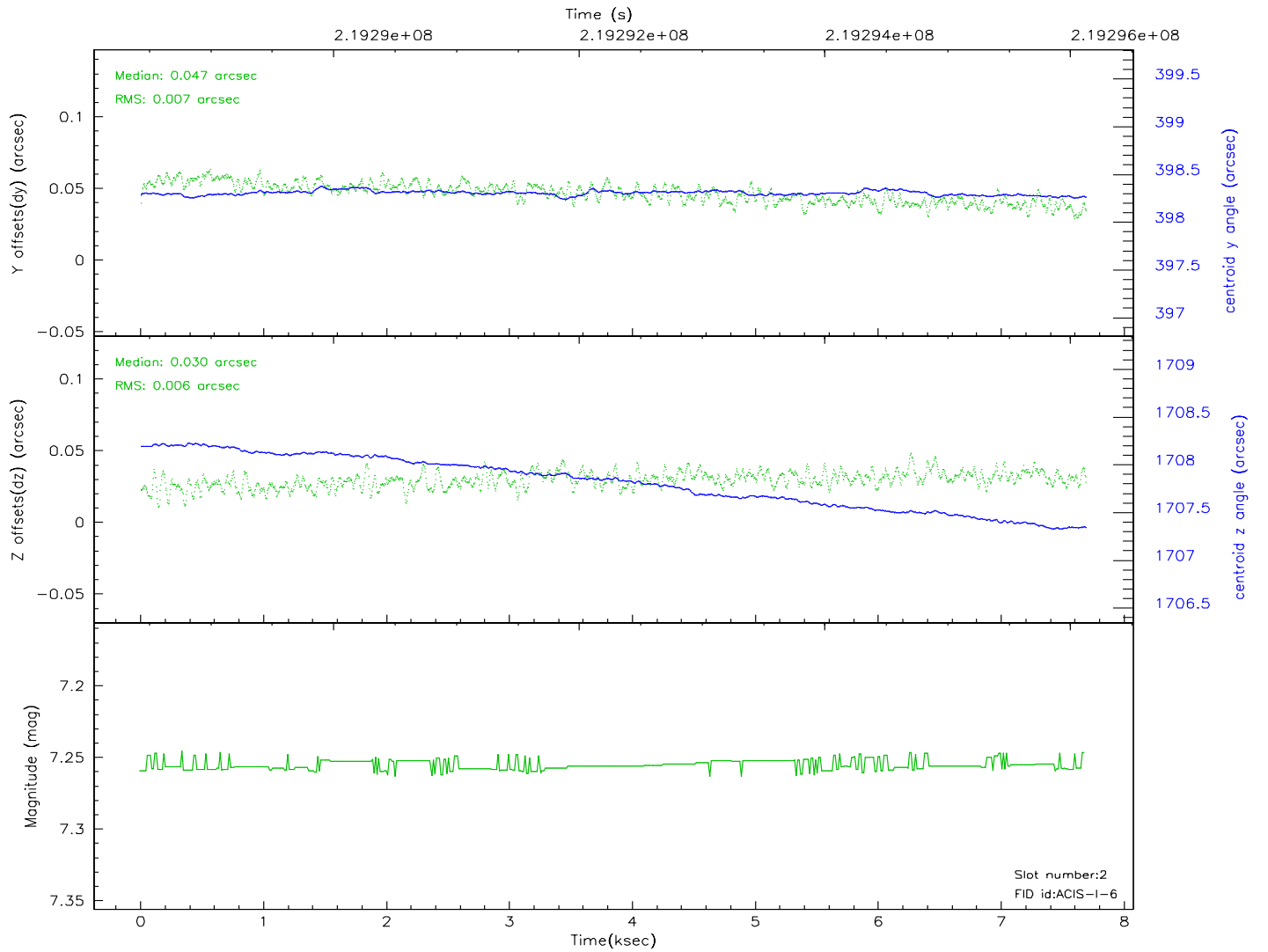
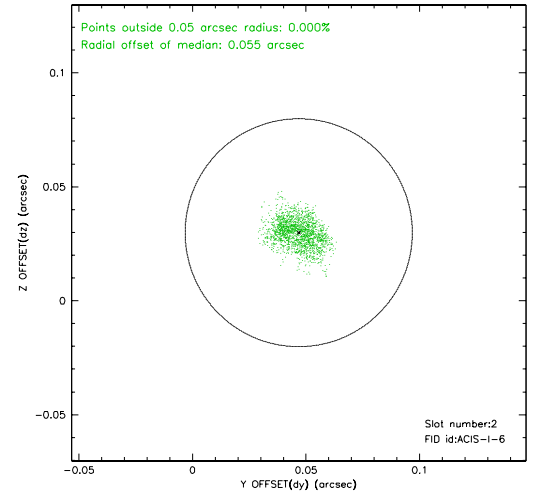
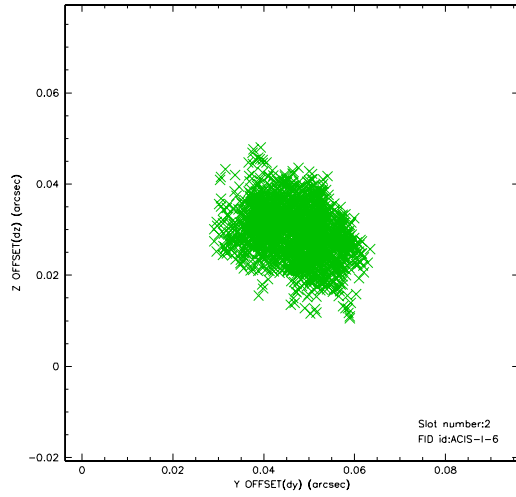
### 2.5.1 Slot 0



## 2.5.2 Slot 1

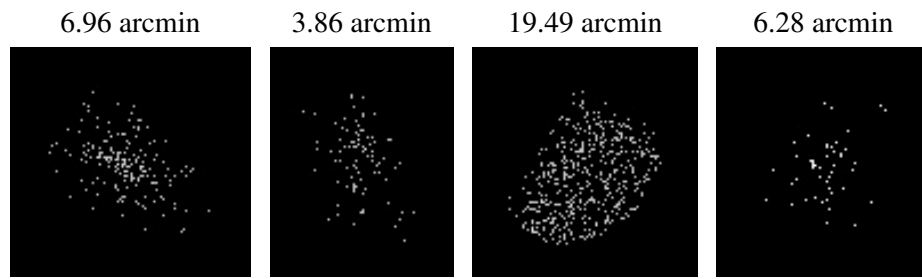


## 2.5.3 Slot 2





### 3 Point Sources



## A Summary

### A.1 Status

V&V Scientist	Beth Sundheim
V&V Date (YYYY-MM-DD)	2006.04.10
V&V Edition	1
V&V Disposition and Status	OK
V&V Charge Time	7.673559

### A.2 Comments

Window constraint satisfied.