

V&V Reference Report

L2 ASCDS Version : 8.4.5

Observation 60439 - L2 Version 3
Chandra X-Ray Center

L2 Processing Date : Nov 9 2012

Contents

1	Front	2
2	OBI	3
2.1	OBI	3
2.1.1	Images	3
2.1.2	Bias	3
2.1.3	Parameters	4
2.1.4	Events	4
2.2	Compared Parameters	5
2.3	Star Slots	6
2.4	FID Slots	6
A	Summary	7
A.1	Status	7
A.2	Comments	7

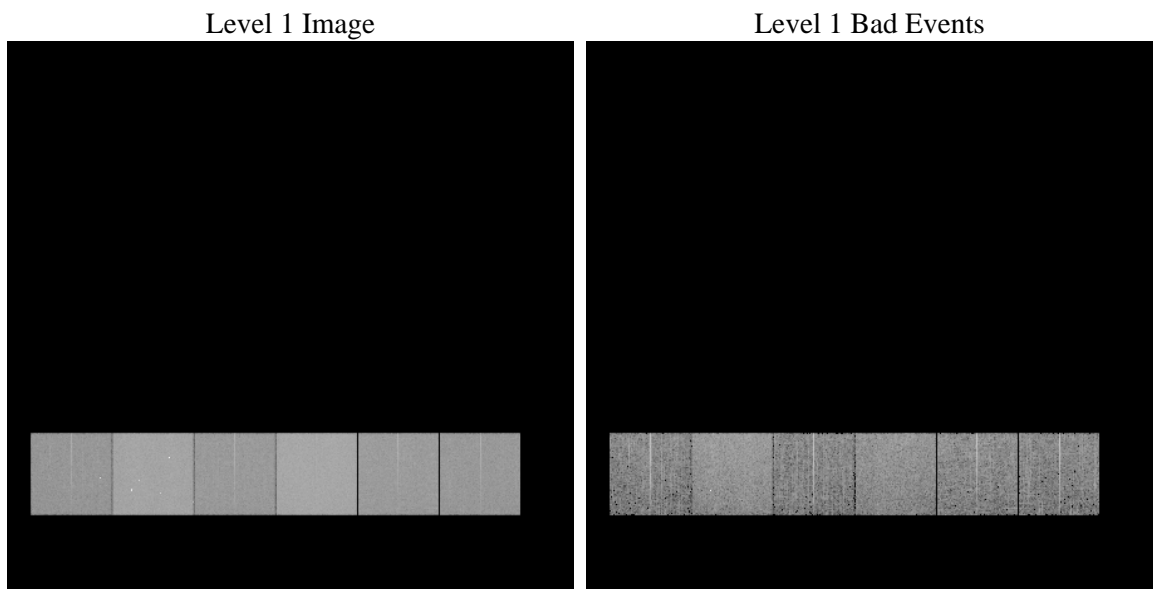
1 Front

seq_num	 	Sequence number
obs_id	60439	Observation id
title	ACIS-456789 diagnostics	Proposal title
observer	CHANDRA engineering request/realtime commanding	Principal investig
object	 	Source name
dtcycle	0	
cycle	P	events from which exps? Prim/Second/Both
ra_targ	0.0	Observer's specified target RA [deg]
dec_targ	0.0	Observer's specified target Dec [deg]
ra_nom	45.022874726357	Nominal RA [deg]
dec_nom	15.981662980578	Nominal Dec [deg]
roll_nom	287.26679418627	Nominal Roll [deg]
revision	3	Processing version of data
ontime	8460.7999684811	Sum of GTIs [s]
livetime	8353.664224798	Livetime [s]
ontime4	4880.7194247544	Sum of GTIs [s]
ontime5	8460.7999684811	Sum of GTIs [s]
ontime6	5259.8755048513	Sum of GTIs [s]
ontime7	8460.7999684811	Sum of GTIs [s]
ontime8	5480.3445009291	Sum of GTIs [s]
ontime9	5172.2460070848	Sum of GTIs [s]
l2events	1225404	Number of level 2 events

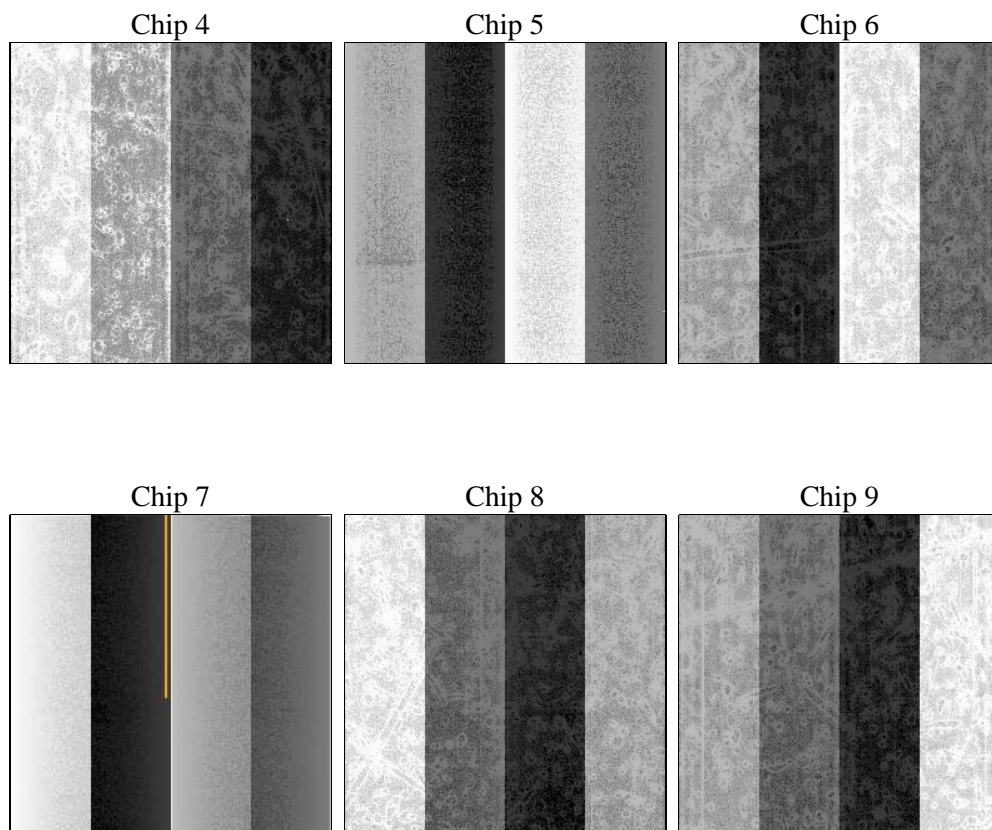
2 OBI

2.1 OBI

2.1.1 Images



2.1.2 Bias



2.1.3 Parameters

obi_num	1	Obi number	sched_exp_time	0.0	[s] Scheduled observation exposure time
ascdsver	8.4.5	Processing system revision	ontime	8460.7999684811	Sum of GTIs [s]
caldbver	4.5.2	 	ontime4	4880.7194247544	Sum of GTIs [s]
date	2012-11-09T17:29:32	Date and time of file creation	ontime5	8460.7999684811	Sum of GTIs [s]
revision	3	Processing version of data	ontime6	5259.8755048513	Sum of GTIs [s]
			ontime7	8460.7999684811	Sum of GTIs [s]
			ontime8	5480.3445009291	Sum of GTIs [s]
			ontime9	5172.2460070848	Sum of GTIs [s]
			l1events	1533363	Number of level 1 events

2.1.4 Events

	ccd 4	ccd 5	ccd 6	ccd 7	ccd 8	ccd 9		ccd 4	ccd 5	ccd 6	ccd 7	ccd 8	ccd 9
level 1 events	195455	323941	220262	349237	234558	209910	grade 0 events	94089	62982	101583	75788	107640	96685
rejected events	34350	53528	34322	44115	38348	34308		48%	19%	46%	21%	45%	46%
rejected %	17%	16%	15%	12%	16%	16%	grade 1 events	609	228	422	233	483	506
								0%	0%	0%	0%	0%	0%
							grade 2 events	25508	97239	32515	67271	34417	30335
								13%	30%	14%	19%	14%	14%
							grade 3 events	10552	16392	11313	30689	12689	11296
								5%	5%	5%	8%	5%	5%
							grade 4 events	10658	16413	11620	30567	12522	11225
								5%	5%	5%	8%	5%	5%
							grade 5 events	2256	8897	2388	8385	2877	2528
								1%	2%	1%	2%	1%	1%
							grade 6 events	20298	77387	28909	100807	28942	26061
								10%	23%	13%	28%	12%	12%
							grade 7 events	31485	44403	31512	35497	34988	31274
								16%	13%	14%	10%	14%	14%

2.2 Compared Parameters

Parameter	Planned	Actual
Instrument	ACIS	ACIS
Detector	ACIS-456789	ACIS-456789
Grating	NONE	NONE
Data mode	FAINT	FAINT
Observation mode	SECONDARY	SECONDARY
[deg] Pointing RA	0	45.02287472635663
[deg] Pointing Dec	0	15.98166298057836
[deg] Pointing Roll	0.0	287.2667941862713
[mm] SIM focus pos	-0.684267	-1.038866356238299
[mm] SIM defocus	0	0.4944702831659975
[mm] SIM translation stage pos	-190.132523	250.466033080201
[mm] SIM translation stage offset	0	-0.01005468664627074
[s] Observation start time (MET)	188966866.420594	188966865.39586
Observation start date	2003-12-28T02:47:46	2003-12-28T02:47:45
[s] Observation end time (MET)	188988721.471546	188988720.44681
Observation end date	2003-12-28T08:52:01	2003-12-28T08:52:00
Read mode	TIMED	TIMED

Parameter	Planned	Actual
Obspar format version number	7	7
Obspar file type	PREDICTED	ACTUAL
Obspar update status	NONE	UPDATED
On-chip summing requested	N	N
Subarray requested	NONE	NONE
Alternating exposures requested	N	N
[s] Primary exposure time	0.000000	3.2

2.3 Star Slots

2.4 FID Slots

A Summary

A.1 Status

V&V Scientist	Beth Sundheim
V&V Date (YYYY-MM-DD)	2012.12.17
V&V Edition	1
V&V Disposition and Status	OK
V&V Charge Time	8.4607999684811

A.2 Comments