

# V&V Reference Report

## L2 ASCDS Version : 7.6.7.2

Observation 60099 - L2 Version 001  
Chandra X-Ray Center

L2 Processing Date : Apr 26 2006

## Contents

<b>1</b>	<b>Front</b>	<b>2</b>
<b>2</b>	<b>OBI</b>	<b>3</b>
2.1	OBI . . . . .	3
2.1.1	Images . . . . .	3
2.1.2	Bias . . . . .	3
2.1.3	Parameters . . . . .	4
2.1.4	Events . . . . .	4
2.2	Compared Parameters . . . . .	5
2.3	Aspect . . . . .	6
2.4	Star Slots . . . . .	8
2.5	FID Slots . . . . .	8
<b>A</b>	<b>Summary</b>	<b>9</b>
A.1	Status . . . . .	9
A.2	Comments . . . . .	9

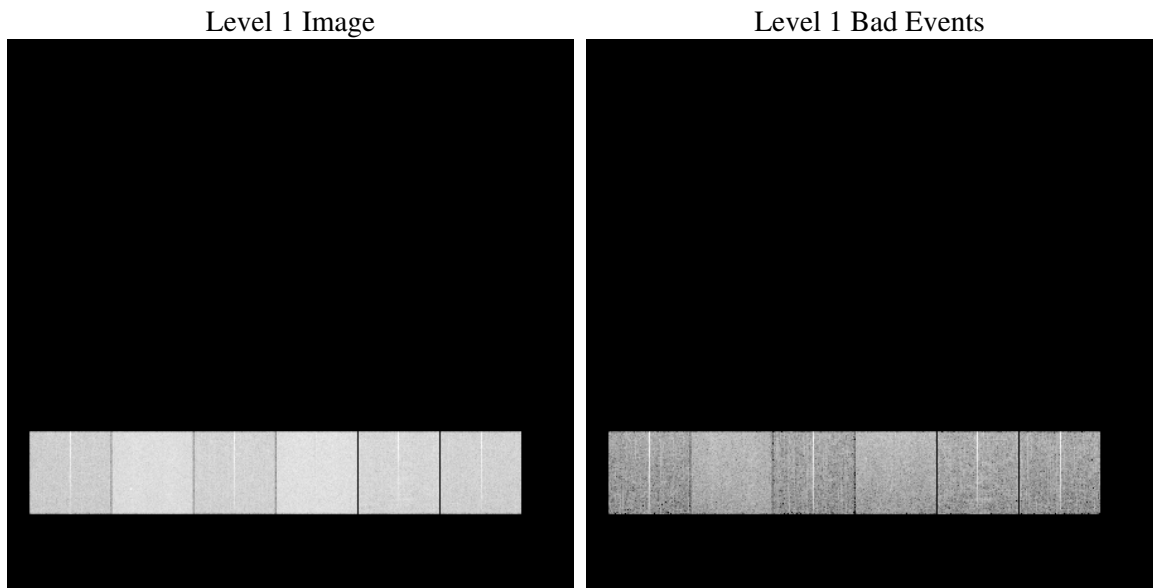
# 1 Front

seq_num	&#160
obs_id	60099
title	ACIS-456789 diagnostics
observer	CHANDRA engineering request/realtime commanding
object	&#160
dtcycle	0
cycle	P
ra_targ	0.0
dec_targ	0.0
ra_nom	326.99757228017
dec_nom	-17.971506825529
roll_nom	61.753284115814
revision	2
ontime	8198.3999694586
livetime	8094.5868925615
ontime4	5372.2720308602
ontime5	8198.3999694586
ontime6	5910.2744828463
ontime7	8198.3999694586
ontime8	6078.8053553104
ontime9	5686.6474130154
l2events	1109257

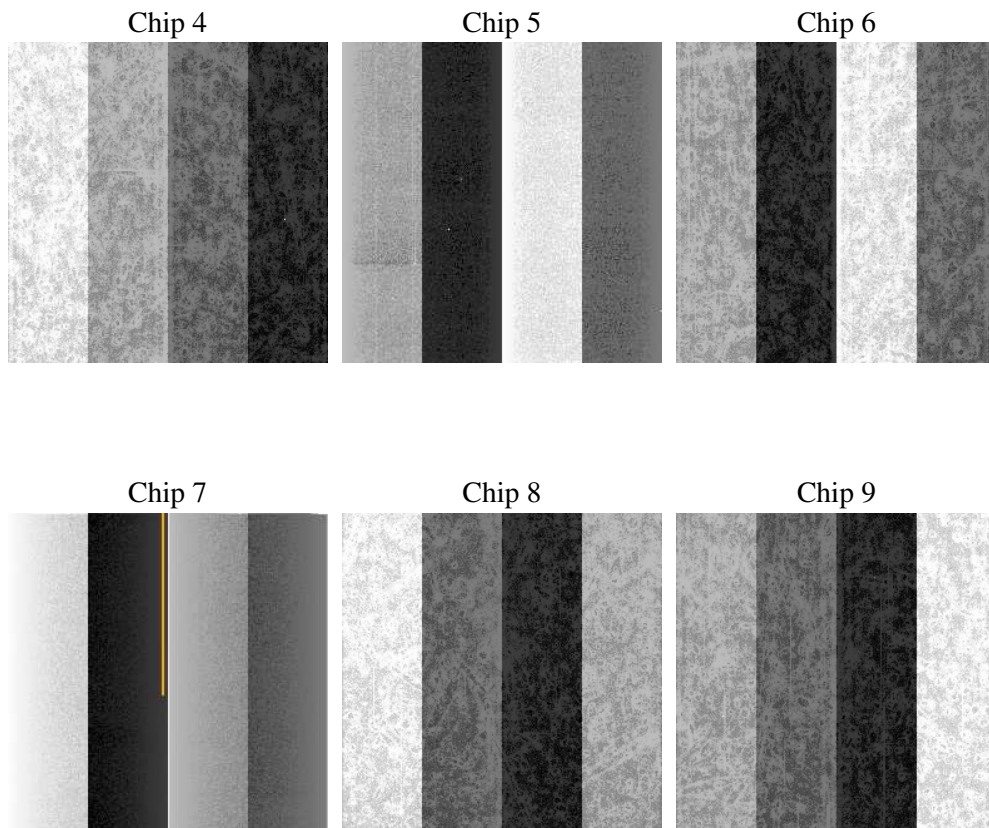
## 2 OBI

### 2.1 OBI

#### 2.1.1 Images



#### 2.1.2 Bias



### 2.1.3 Parameters

obi_num	1
ascdsver	7.6.7.2
caldbver	3.2.1
date	2006-04-27T02:21:08
revision	2

sched_exp_time	0.0
ontime	8271.0404977202
ontime4	5418.9846474528
ontime5	8271.0404977202
ontime6	5960.2281892598
ontime7	8271.0404977202
ontime8	6135.2410122752
ontime9	5739.8421294987
l1events	1497181

### 2.1.4 Events

	ccd 4	ccd 5	ccd 6	ccd 7	ccd 8	ccd 9
level 1 events	198272	294751	227321	315035	245550	216252
rejected events	45784	67789	47341	63418	53147	47754
rejected %	23%	22%	20%	20%	21%	22%

	ccd 4	ccd 5	ccd 6	ccd 7	ccd 8	ccd 9
grade 0 events	89862	22688	97868	42063	105530	93609
	45%	7%	43%	13%	42%	43%
grade 1 events	703	104	486	110	581	533
	0%	0%	0%	0%	0%	0%
grade 2 events	23906	107874	31948	78226	34062	29057
	12%	36%	14%	24%	13%	13%
grade 3 events	10147	7007	11030	17920	12724	10780
	5%	2%	4%	5%	5%	4%
grade 4 events	10205	6655	11110	17452	12427	10856
	5%	2%	4%	5%	5%	5%
grade 5 events	2598	6283	3006	7095	3533	3042
	1%	2%	1%	2%	1%	1%
grade 6 events	19612	84725	29528	98115	29367	25699
	9%	28%	12%	31%	11%	11%
grade 7 events	41239	59415	42345	54054	47326	42676
	20%	20%	18%	17%	19%	19%

## 2.2 Compared Parameters

Parameter	Planned	Actual	Parameter	Planned	Actual
Instrument	ACIS	ACIS	Obspar format version number	6	6
Detector	ACIS-456789	ACIS-456789	Obspar file type	PREDICTED	ACTUAL
Grating	NONE	NONE	Obspar update status	NONE	UPDATED
Data mode	FAINT	FAINT	On-chip summing requested	N	N
Observation mode	SECONDARY	SECONDARY	Subarray requested	NONE	NONE
Pointing RA	0	326.9975722801731	Alternating exposures requested	N	N
Pointing Dec	0	-17.97150682552888	Primary exposure time	3.2	3.2
Pointing Roll	0.0	61.75328411581392			
SIM focus pos (mm)	-0.684267	-0.7809083437167272			
SIM defocus (mm)	0	0.7524282956875696			
SIM translation stage pos (mm)	-190.132523	250.4635187648994			
SIM translation stage offset (mm)	0	-0.007540371344731511			
Observation start time	208614667.935779	208614666.91079			
Observation start date	2004-08-11T12:31:08	2004-08-11T12:31:06			
Observation end time	208637055.986774	208637054.96178			
Observation end date	2004-08-11T18:44:16	2004-08-11T18:44:14			
Read mode	TIMED	TIMED			

## 2.3 Aspect



## **2.4 Star Slots**

## **2.5 FID Slots**



## A Summary

### A.1 Status

V&V Scientist	Jen Lauer
V&V Date (YYYY-MM-DD)	2006.04.27
V&V Edition	1
V&V Disposition and Status	OK
V&V Charge Time	8.19839996

### A.2 Comments

The ACIS focal plane temperature is above calibration limits for all but the last ksec of the observation.