

V&V Reference Report

L2 ASCDS Version : 8.5

Observation 59949 - L2 Version 3
Chandra X-Ray Center

L2 Processing Date : Dec 12 2012

Contents

1	Front	2
2	OBI	3
2.1	OBI	3
2.1.1	Images	3
2.1.2	Bias	3
2.1.3	Parameters	4
2.1.4	Events	4
2.2	Compared Parameters	5
2.3	Star Slots	6
2.4	FID Slots	6
A	Summary	7
A.1	Status	7
A.2	Comments	7

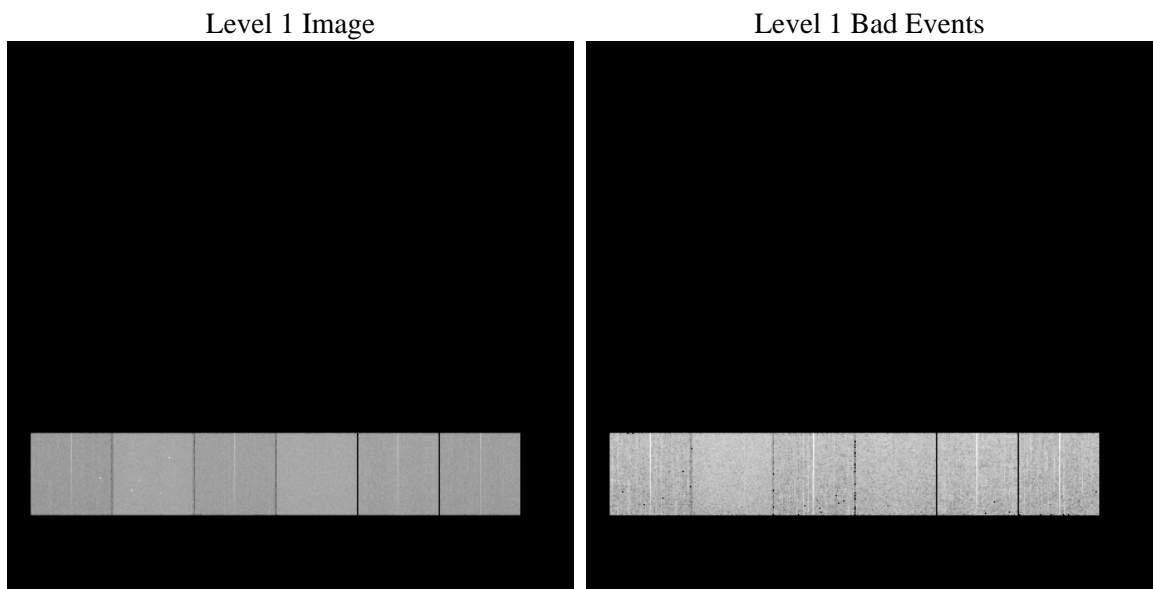
1 Front

seq_num	 	Sequence number
obs_id	59949	Observation id
title	ACIS-456789 diagnostics	Proposal title
observer	CHANDRA engineering request/realtime commanding	Principal investig
object	 	Source name
dtcycle	0	
cycle	P	events from which exps? Prim/Second/Both
ra_targ	0.0	Observer's specified target RA [deg]
dec_targ	0.0	Observer's specified target Dec [deg]
ra_nom	40.303084884174	Nominal RA [deg]
dec_nom	35.471449581178	Nominal Dec [deg]
roll_nom	242.47326238761	Nominal Roll [deg]
revision	3	Processing version of data
ontime	8281.5999691486	Sum of GTIs [s]
livetime	8176.7333637585	Livetime [s]
ontime4	5886.5156214237	Sum of GTIs [s]
ontime5	8281.5999691486	Sum of GTIs [s]
ontime6	6440.7240853608	Sum of GTIs [s]
ontime7	8281.5999691486	Sum of GTIs [s]
ontime8	6602.7720142007	Sum of GTIs [s]
ontime9	6249.5065572858	Sum of GTIs [s]
l2events	1101221	Number of level 2 events

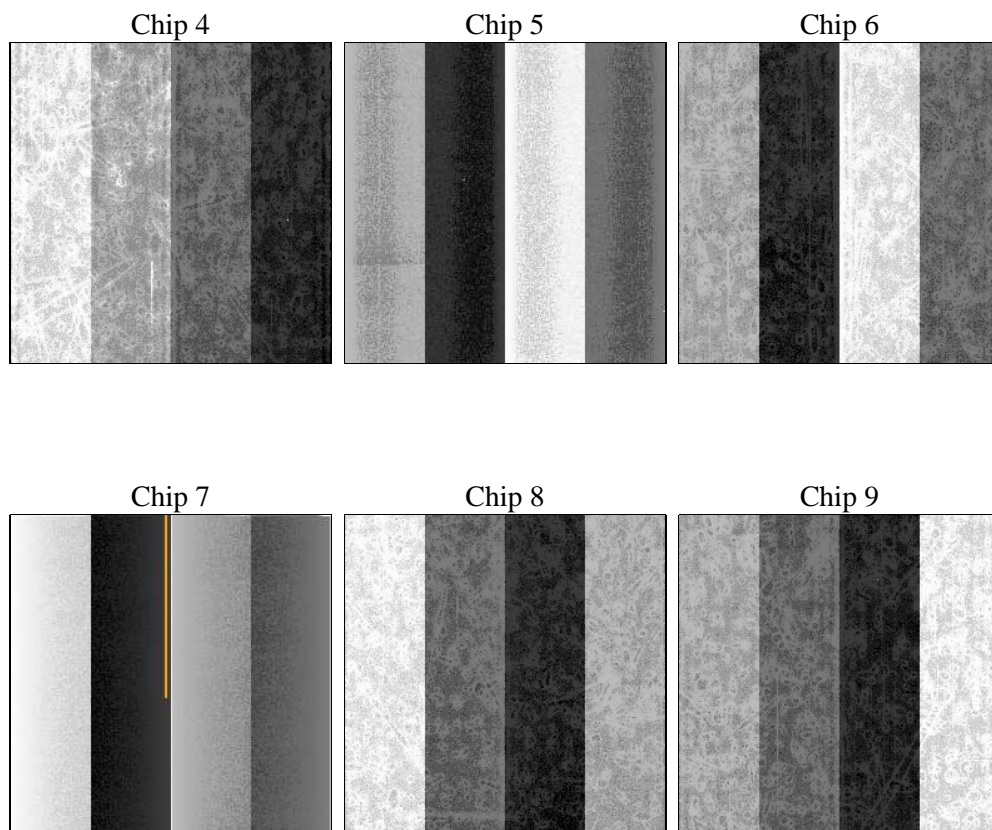
2 OBI

2.1 OBI

2.1.1 Images



2.1.2 Bias



2.1.3 Parameters

obi_num	0	Obi number	sched_exp_time	0.0	[s] Scheduled observation exposure time
ascdsver	8.5	Processing system revision	ontime	8281.5999691486	Sum of GTIs [s]
caldsver	4.5.4	 	ontime4	5886.5156214237	Sum of GTIs [s]
date	2012-12-12T08:38:47	Date and time of file creation	ontime5	8281.5999691486	Sum of GTIs [s]
revision	3	Processing version of data	ontime6	6440.7240853608	Sum of GTIs [s]
			ontime7	8281.5999691486	Sum of GTIs [s]
			ontime8	6602.7720142007	Sum of GTIs [s]
			ontime9	6249.5065572858	Sum of GTIs [s]
			l1events	1497146	Number of level 1 events

2.1.4 Events

	ccd 4	ccd 5	ccd 6	ccd 7	ccd 8	ccd 9		ccd 4	ccd 5	ccd 6	ccd 7	ccd 8	ccd 9
level 1 events	204296	286521	232989	302176	250788	220376	grade 0 events	89820	48291	97984	59420	103415	92799
rejected events	50394	61119	51967	53313	59535	51442		43%	16%	42%	19%	41%	42%
rejected %	24%	21%	22%	17%	23%	23%	grade 1 events	751	234	556	211	559	621
								0%	0%	0%	0%	0%	0%
							grade 2 events	24189	81100	31249	54296	33453	29160
								11%	28%	13%	17%	13%	13%
							grade 3 events	10281	13055	11415	24673	12603	10934
								5%	4%	4%	8%	5%	4%
							grade 4 events	10145	12986	11413	24720	12701	10898
								4%	4%	4%	8%	5%	4%
							grade 5 events	2811	9821	3318	9600	3979	3383
								1%	3%	1%	3%	1%	1%
							grade 6 events	19467	69970	28961	85754	29081	25143
								9%	24%	12%	28%	11%	11%
							grade 7 events	46832	51064	48093	43502	54997	47438
								22%	17%	20%	14%	21%	21%

2.2 Compared Parameters

Parameter	Planned	Actual
Instrument	ACIS	ACIS
Detector	ACIS-456789	ACIS-456789
Grating	NONE	NONE
Data mode	FAINT	FAINT
Observation mode	SECONDARY	SECONDARY
[deg] Pointing RA	0	40.30308488417447
[deg] Pointing Dec	0	35.47144958117828
[deg] Pointing Roll	0.0	242.4732623876106
[mm] SIM focus pos	-0.684267	-0.6828225247311905
[mm] SIM defocus	0	0.8505141146731063
[mm] SIM translation stage pos	-190.132523	250.466033080201
[mm] SIM translation stage offset	0	-0.01005468664627074
[s] Observation start time (MET)	217994144.055077	217994143.03009
Observation start date	2004-11-28T01:55:44	2004-11-28T01:55:43
[s] Observation end time (MET)	218007071.355658	218007070.33067
Observation end date	2004-11-28T05:31:11	2004-11-28T05:31:10
Read mode	TIMED	TIMED

Parameter	Planned	Actual
Obspar format version number	7	7
Obspar file type	PREDICTED	ACTUAL
Obspar update status	NONE	UPDATED
On-chip summing requested	N	N
Subarray requested	NONE	NONE
Alternating exposures requested	N	N
[s] Primary exposure time	3.2	3.2

2.3 Star Slots

2.4 FID Slots

A Summary

A.1 Status

V&V Scientist	Beth Sundheim
V&V Date (YYYY-MM-DD)	2013.01.04
V&V Edition	1
V&V Disposition and Status	OK
V&V Charge Time	8.2815999691486

A.2 Comments