

V&V Reference Report

L2 ASCDS Version : 7.6.7.1

Observation 59949 - L2 Version 002
Chandra X-Ray Center

L2 Processing Date : Apr 10 2006

Contents

1	Front	2
2	OBI	3
2.1	OBI	3
2.1.1	Images	3
2.1.2	Bias	3
2.1.3	Parameters	4
2.1.4	Events	4
2.2	Compared Parameters	5
2.3	Aspect	6
2.4	Star Slots	8
2.5	FID Slots	8
A	Summary	9
A.1	Status	9
A.2	Comments	9

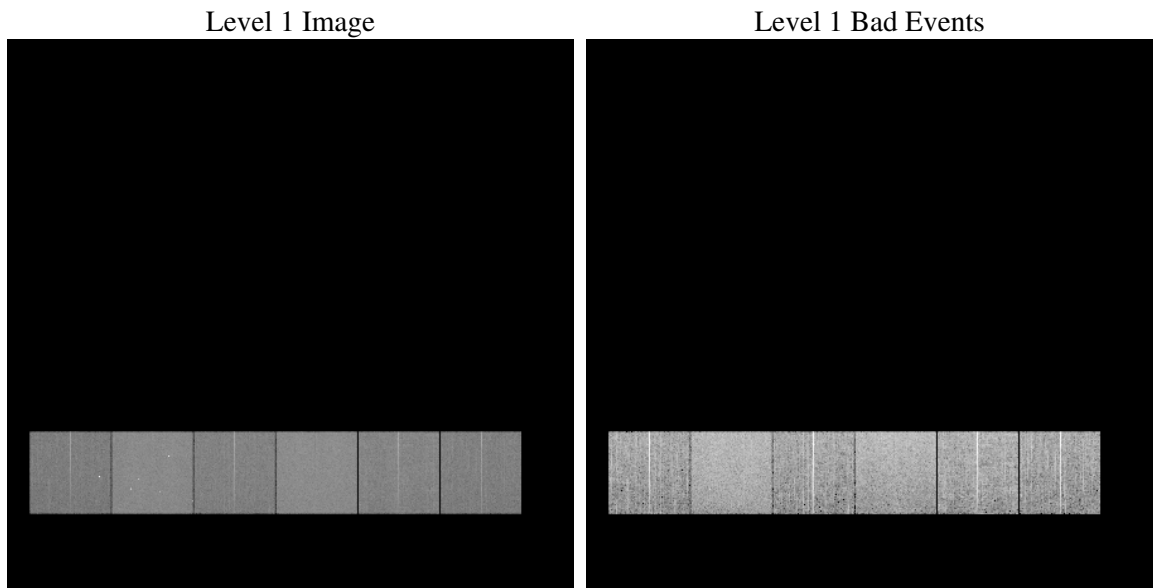
1 Front

seq_num	
obs_id	59949
title	ACIS-456789 diagnostics
observer	CHANDRA engineering request/realtime commanding
object	
dtcycle	0
cycle	P
ra_targ	0.0
dec_targ	0.0
ra_nom	40.303100683186
dec_nom	35.471474199275
roll_nom	242.47325321195
revision	2
ontime	8280.987301141
livetime	8176.1284537221
ontime4	5886.026073426
ontime5	8281.0283411443
ontime6	6440.1934973598
ontime7	8280.987301141
ontime8	6602.3235061765
ontime9	6248.8528492749
l2events	1085094

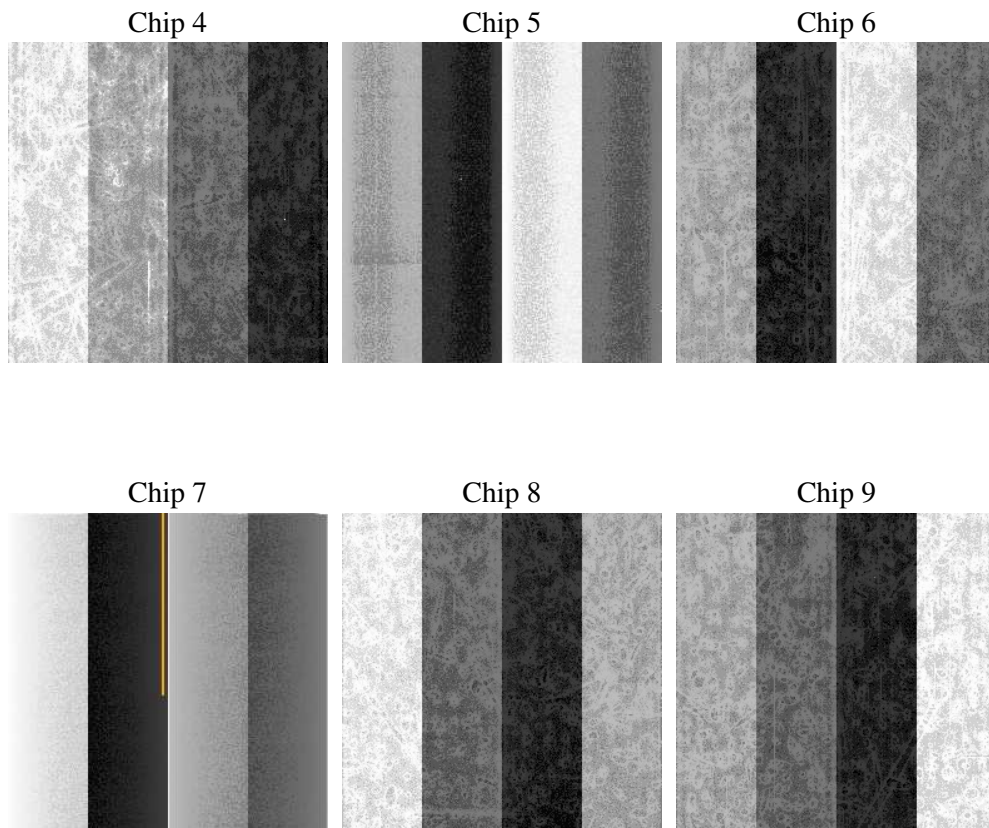
2 OBI

2.1 OBI

2.1.1 Images



2.1.2 Bias



2.1.3 Parameters

obi_num	0
ascdsver	7.6.7.1
caldsver	3.2.1
date	2006-04-11T02:13:24
revision	2

sched_exp_time	0.0
ontime	8284.0168421865
ontime4	5888.9324944615
ontime5	8284.0168421865
ontime6	6443.1409583986
ontime7	8284.0168421865
ontime8	6605.1888872385
ontime9	6251.9234303236
l1events	1497146

2.1.4 Events

	ccd 4	ccd 5	ccd 6	ccd 7	ccd 8	ccd 9
level 1 events	204296	286521	232989	302176	250788	220376
rejected events	50476	67140	52069	63616	59628	51524
rejected %	24%	23%	22%	21%	23%	23%

	ccd 4	ccd 5	ccd 6	ccd 7	ccd 8	ccd 9
grade 0 events	89816	24539	97980	40202	103415	92798
	43%	8%	42%	13%	41%	42%
grade 1 events	750	114	556	123	559	621
	0%	0%	0%	0%	0%	0%
grade 2 events	24193	101664	31253	72045	33453	29161
	11%	35%	13%	23%	13%	13%
grade 3 events	10280	6789	11414	16824	12602	10933
	5%	2%	4%	5%	5%	4%
grade 4 events	10144	6546	11413	16746	12700	10898
	4%	2%	4%	5%	5%	4%
grade 5 events	2812	6757	3317	7467	3978	3383
	1%	2%	1%	2%	1%	1%
grade 6 events	19469	79924	28962	92829	29082	25144
	9%	27%	12%	30%	11%	11%
grade 7 events	46832	60188	48094	55940	54999	47438
	22%	21%	20%	18%	21%	21%

2.2 Compared Parameters

Parameter	Planned	Actual	Parameter	Planned	Actual
Instrument	ACIS	ACIS	Obspar format version number	6	6
Detector	ACIS-456789	ACIS-456789	Obspar file type	PREDICTED	ACTUAL
Grating	NONE	NONE	Obspar update status	NONE	UPDATED
Data mode	FAINT	FAINT	On-chip summing requested	N	N
Observation mode	SECONDARY	SECONDARY	Subarray requested	NONE	NONE
Pointing RA	0	40.30310068318553	Alternating exposures requested	N	N
Pointing Dec	0	35.47147419927538	Primary exposure time	3.2	3.2
Pointing Roll	0.0	242.4732532119464			
SIM focus pos (mm)	-0.684267	-0.6828225247311905			
SIM defocus (mm)	0	0.8505141146731063			
SIM translation stage pos (mm)	-190.132523	250.466033080201			
SIM translation stage offset (mm)	0	-0.01005468664627074			
Observation start time	217994144.055077	217994143.03009			
Observation start date	2004-11-28T01:55:44	2004-11-28T01:55:43			
Observation end time	218007071.355658	218007070.33067			
Observation end date	2004-11-28T05:31:11	2004-11-28T05:31:10			
Read mode	TIMED	TIMED			

2.3 Aspect

2.4 Star Slots

2.5 FID Slots

A Summary

A.1 Status

V&V Scientist	Jen Lauer
V&V Date (YYYY-MM-DD)	2006.04.11
V&V Edition	1
V&V Disposition and Status	OK
V&V Charge Time	8.2809873

A.2 Comments