

V&V Reference Report

L2 ASCDS Version : 8.5.1

Observation 59779 - L2 Version 3
Chandra X-Ray Center

L2 Processing Date : Dec 17 2012

Contents

| | | |
|----------|-------------------------------|----------|
| 1 | Front | 2 |
| 2 | OBI | 3 |
| 2.1 | OBI | 3 |
| 2.1.1 | Images | 3 |
| 2.1.2 | Bias | 3 |
| 2.1.3 | Parameters | 4 |
| 2.1.4 | Events | 4 |
| 2.2 | Compared Parameters | 5 |
| 2.3 | Star Slots | 6 |
| 2.4 | FID Slots | 6 |
| A | Summary | 7 |
| A.1 | Status | 7 |
| A.2 | Comments | 7 |

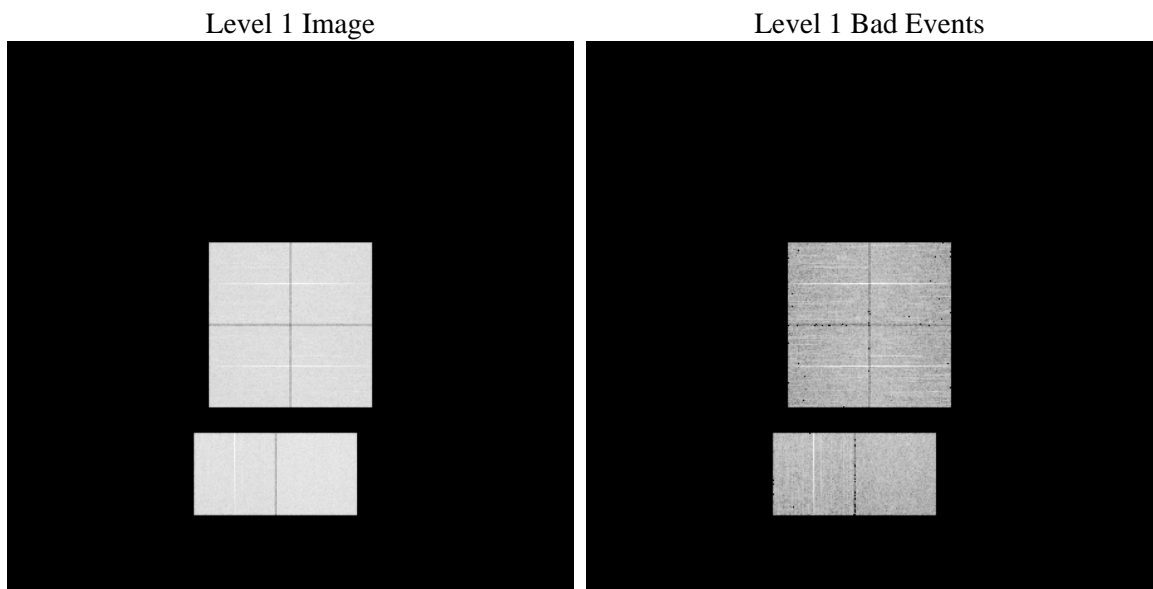
1 Front

| | | |
|----------|---|---|
| seq_num | | Sequence number |
| obs_id | 59779 | Observation id |
| title | ACIS-012367 diagnostics | Proposal title |
| observer | CHANDRA engineering request/realtime commanding | Principal investig |
| object | | Source name |
| dtcycle | 0 | |
| cycle | P | events from which exps? Prim/Second/Both |
| ra_targ | 0.0 | Observer's specified target RA [deg] |
| dec_targ | 0.0 | Observer's specified target Dec [deg] |
| ra_nom | 169.4904876934 | Nominal RA [deg] |
| dec_nom | 6.0274322453765 | Nominal Dec [deg] |
| roll_nom | 74.270547428231 | Nominal Roll [deg] |
| revision | 3 | Processing version of data |
| ontime | 8220.7999693751 | Sum of GTIs [s] |
| livetime | 8116.7032501914 | Livetime [s] |
| ontime0 | 7284.1584034264 | Sum of GTIs [s] |
| ontime1 | 7468.8930545747 | Sum of GTIs [s] |
| ontime2 | 7060.5307745636 | Sum of GTIs [s] |
| ontime3 | 7161.0009438694 | Sum of GTIs [s] |
| ontime6 | 7695.7621814311 | Sum of GTIs [s] |
| ontime7 | 8220.7999693751 | Sum of GTIs [s] |
| l2events | 1113683 | Number of level 2 events |

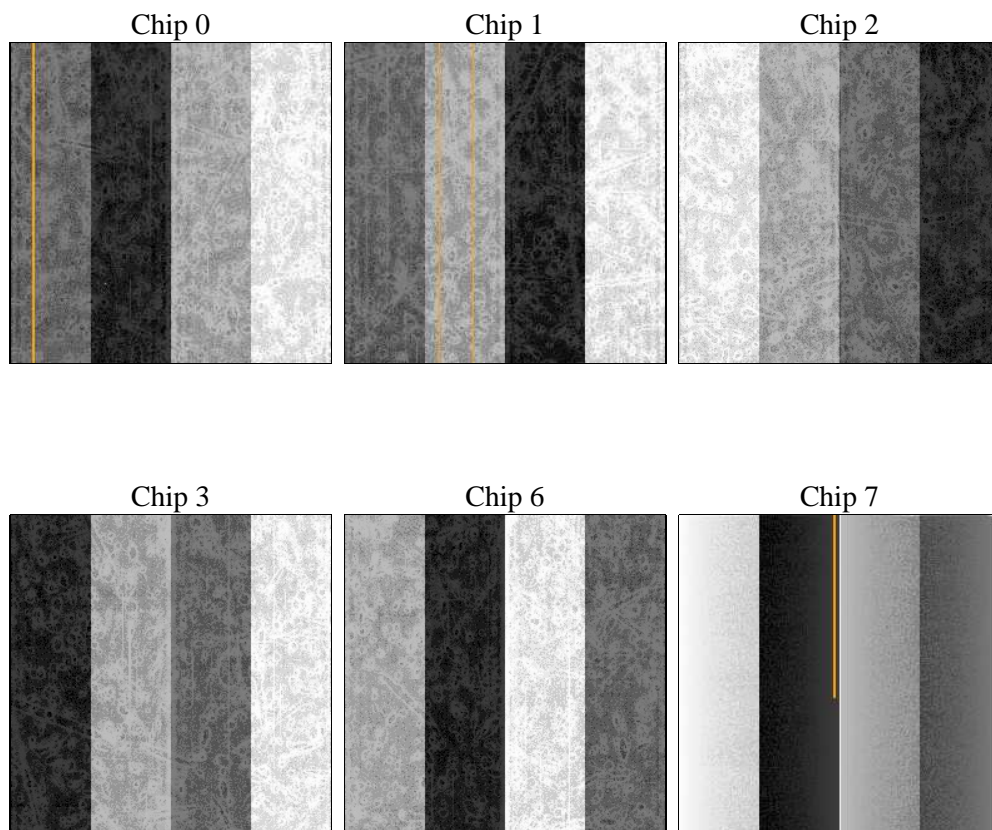
2 OBI

2.1 OBI

2.1.1 Images



2.1.2 Bias



2.1.3 Parameters

| | | | | | |
|----------|---------------------|--------------------------------|----------------|-----------------|---|
| obi_num | 0 | Obi number | sched_exp_time | 0.0 | [s] Scheduled observation exposure time |
| ascdsver | 8.5.1 | Processing system revision | ontime | 8220.7999693751 | Sum of GTIs [s] |
| caldsver | 4.5.5 | | ontime0 | 7284.1584034264 | Sum of GTIs [s] |
| date | 2012-12-17T23:51:28 | Date and time of file creation | ontime1 | 7468.8930545747 | Sum of GTIs [s] |
| revision | 3 | Processing version of data | ontime2 | 7060.5307745636 | Sum of GTIs [s] |
| | | | ontime3 | 7161.0009438694 | Sum of GTIs [s] |
| | | | ontime6 | 7695.7621814311 | Sum of GTIs [s] |
| | | | ontime7 | 8220.7999693751 | Sum of GTIs [s] |
| | | | l1events | 1492057 | Number of level 1 events |

2.1.4 Events

| | ccd 0 | ccd 1 | ccd 2 | ccd 3 | ccd 6 | ccd 7 | | ccd 0 | ccd 1 | ccd 2 | ccd 3 | ccd 6 | ccd 7 |
|-----------------|--------|--------|--------|--------|--------|--------|----------------|--------|--------|--------|--------|--------|-------|
| level 1 events | 235451 | 241015 | 231598 | 237056 | 261881 | 285056 | grade 0 events | 101451 | 103643 | 100896 | 103445 | 111119 | 55658 |
| rejected events | 52000 | 52162 | 51581 | 54112 | 58540 | 53137 | | 43% | 43% | 43% | 43% | 42% | 19% |
| rejected % | 22% | 21% | 22% | 22% | 22% | 18% | grade 1 events | 593 | 510 | 653 | 650 | 577 | 183 |
| | | | | | | | | 0% | 0% | 0% | 0% | 0% | 0% |
| | | | | | | | grade 2 events | 32388 | 33985 | 30630 | 31292 | 35218 | 51050 |
| | | | | | | | | 13% | 14% | 13% | 13% | 13% | 17% |
| | | | | | | | grade 3 events | 12048 | 12254 | 11961 | 12069 | 12963 | 23218 |
| | | | | | | | | 5% | 5% | 5% | 5% | 4% | 8% |
| | | | | | | | grade 4 events | 12060 | 12172 | 12113 | 12033 | 12927 | 23083 |
| | | | | | | | | 5% | 5% | 5% | 5% | 4% | 8% |
| | | | | | | | grade 5 events | 3213 | 3285 | 2939 | 3424 | 3598 | 9063 |
| | | | | | | | | 1% | 1% | 1% | 1% | 1% | 3% |
| | | | | | | | grade 6 events | 26839 | 28145 | 25606 | 25374 | 32786 | 80568 |
| | | | | | | | | 11% | 11% | 11% | 10% | 12% | 28% |
| | | | | | | | grade 7 events | 46859 | 47021 | 46800 | 48769 | 52693 | 42233 |
| | | | | | | | | 19% | 19% | 20% | 20% | 20% | 14% |

2.2 Compared Parameters

| Parameter | Planned | Actual | Parameter | Planned | Actual |
|-----------------------------------|---------------------|----------------------|---------------------------------|-----------|---------|
| Instrument | ACIS | ACIS | Obspar format version number | 7 | 7 |
| Detector | ACIS-012367 | ACIS-012367 | Obspar file type | PREDICTED | ACTUAL |
| Grating | NONE | NONE | Obspar update status | NONE | UPDATED |
| Data mode | FAINT | FAINT | On-chip summing requested | N | N |
| Observation mode | SECONDARY | SECONDARY | Subarray requested | NONE | NONE |
| [deg] Pointing RA | 0 | 169.4904876933959 | Alternating exposures requested | N | N |
| [deg] Pointing Dec | 0 | 6.027432245376475 | [s] Primary exposure time | 3.2 | 3.2 |
| [deg] Pointing Roll | 0.0 | 74.2705474282313 | | | |
| [mm] SIM focus pos | -0.782348 | -0.7809083437167272 | | | |
| [mm] SIM defocus | 0 | 0.7524282956875696 | | | |
| [mm] SIM translation stage pos | -233.592463 | 250.466033080201 | | | |
| [mm] SIM translation stage offset | 0 | -0.01005468664627074 | | | |
| [s] Observation start time (MET) | 225749519.904954 | 225749518.87996 | | | |
| Observation start date | 2005-02-25T20:12:00 | 2005-02-25T20:11:58 | | | |
| [s] Observation end time (MET) | 225773345.006033 | 225773343.98104 | | | |
| Observation end date | 2005-02-26T02:49:05 | 2005-02-26T02:49:03 | | | |
| Read mode | TIMED | TIMED | | | |

2.3 Star Slots

2.4 FID Slots

A Summary

A.1 Status

| | |
|----------------------------|-----------------|
| V&V Scientist | Jen Lauer |
| V&V Date (YYYY-MM-DD) | 2013.01.10 |
| V&V Edition | 1 |
| V&V Disposition and Status | OK |
| V&V Charge Time | 8.2207999693751 |

A.2 Comments