

# V&V Reference Report

## L2 ASCDS Version : 7.6.7

Observation 59649 - L2 Version 002  
Chandra X-Ray Center

L2 Processing Date: Mar 4 2006

## Contents

<b>1</b>	<b>Front</b>	<b>2</b>
<b>2</b>	<b>OBI</b>	<b>3</b>
2.1	OBI . . . . .	3
2.1.1	Images . . . . .	3
2.1.2	Bias . . . . .	3
2.1.3	Parameters . . . . .	4
2.1.4	Events . . . . .	4
2.2	Compared Parameters . . . . .	5
2.3	Aspect . . . . .	6
2.4	Star Slots . . . . .	8
2.5	FID Slots . . . . .	8
<b>A</b>	<b>Summary</b>	<b>9</b>
A.1	Status . . . . .	9
A.2	Comments . . . . .	9

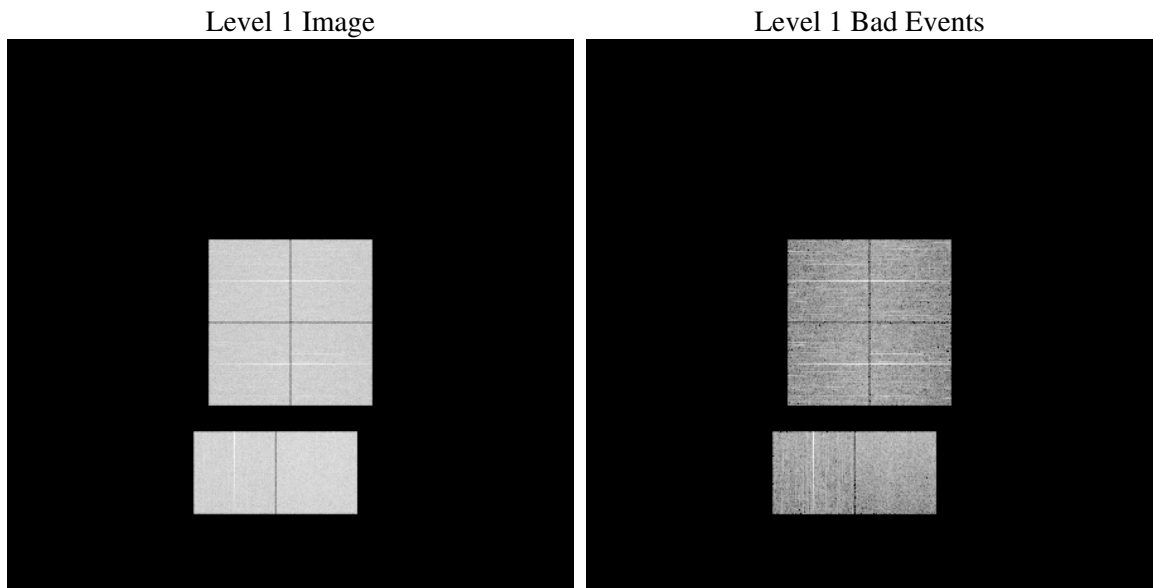
# 1 Front

seq_num	&#160
obs_id	59649
title	ACIS-012367 diagnostics
observer	CHANDRA engineering request/realtime commanding
object	&#160
dtcycle	0
cycle	P
ra_targ	0.0
dec_targ	0.0
ra_nom	232.48344490944
dec_nom	4.480043091355
roll_nom	197.17574717636
revision	2
ontime	7801.5999709368
livetime	7702.8114145452
ontime0	6991.3578563333
ontime1	7056.1772324741
ontime2	6595.9589418471
ontime3	6793.6582992077
ontime6	7244.1533197463
ontime7	7801.5999709368
l2events	1046418

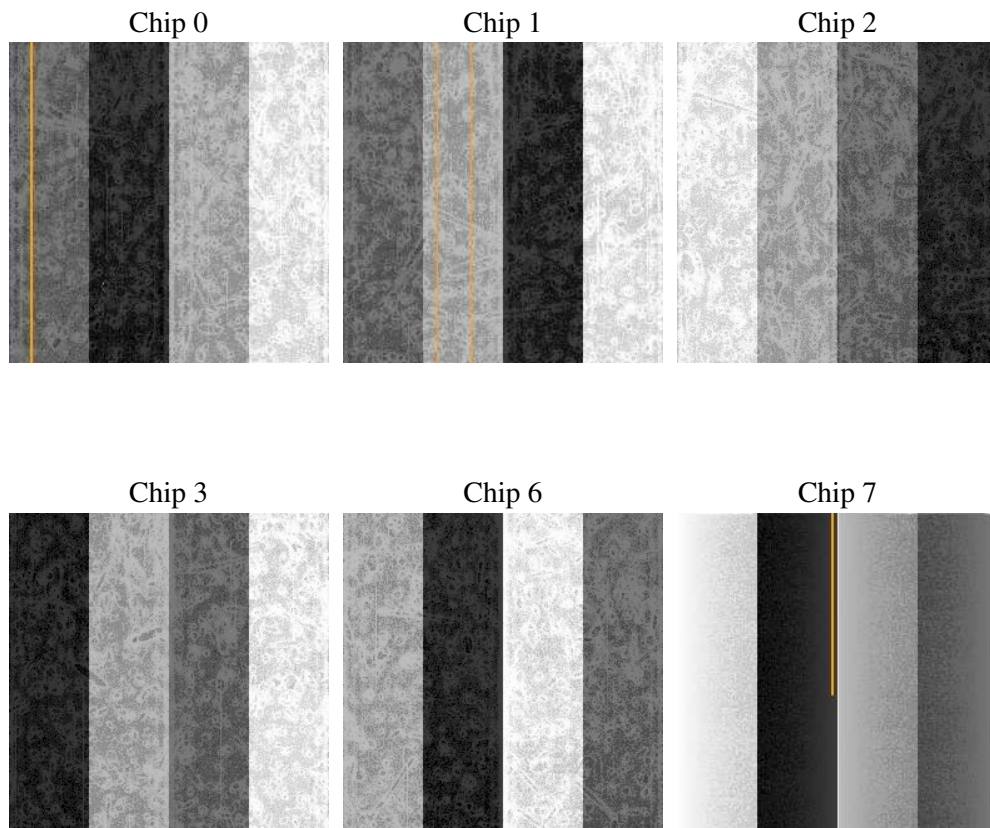
## 2 OBI

### 2.1 OBI

#### 2.1.1 Images



#### 2.1.2 Bias



### 2.1.3 Parameters

obi_num	0
ascdsver	7.6.7
caldsver	3.2.1
date	2006-03-04T07:54:48
revision	2

sched_exp_time	0.0
ontime	7804.3367355168
ontime0	6994.0946209133
ontime1	7058.9139970541
ontime2	6598.6957064271
ontime3	6796.3950637877
ontime6	7246.8900843263
ontime7	7804.3367355168
l1events	1407286

### 2.1.4 Events

	ccd 0	ccd 1	ccd 2	ccd 3	ccd 6	ccd 7
level 1 events	223413	226783	218040	222710	248174	268166
rejected events	47350	48664	50455	48880	55220	56878
rejected %	21%	21%	23%	21%	22%	21%

	ccd 0	ccd 1	ccd 2	ccd 3	ccd 6	ccd 7
grade 0 events	95869	96448	93071	96484	103771	36126
	42%	42%	42%	43%	41%	13%
grade 1 events	541	515	569	669	569	105
	0%	0%	0%	0%	0%	0%
grade 2 events	30910	31997	28316	29658	33251	64205
	13%	14%	12%	13%	13%	23%
grade 3 events	11349	11321	11046	11422	12086	14763
	5%	4%	5%	5%	4%	5%
grade 4 events	11342	11355	10931	11382	12105	14629
	5%	5%	5%	5%	4%	5%
grade 5 events	3081	3131	2736	3211	3442	6636
	1%	1%	1%	1%	1%	2%
grade 6 events	26700	27083	24308	24965	31848	81656
	11%	11%	11%	11%	12%	30%
grade 7 events	43621	44933	47063	44919	51102	50046
	19%	19%	21%	20%	20%	18%

## 2.2 Compared Parameters

Parameter	Planned	Actual	Parameter	Planned	Actual
Instrument	ACIS	ACIS	Obspar format version number	6	6
Detector	ACIS-012367	ACIS-012367	Obspar file type	PREDICTED	ACTUAL
Grating	NONE	NONE	Obspar update status	NONE	UPDATED
Data mode	FAINT	FAINT	On-chip summing requested	N	N
Observation mode	SECONDARY	SECONDARY	Subarray requested	NONE	NONE
Pointing RA	0	232.4834449094449	Alternating exposures requested	N	N
Pointing Dec	0	4.480043091355008	Primary exposure time	3.2	3.2
Pointing Roll	0.0	197.1757471763606			
SIM focus pos (mm)	-0.782348	-0.6828225247311905			
SIM defocus (mm)	0	0.8505141146731063			
SIM translation stage pos (mm)	-233.592463	250.466033080201			
SIM translation stage offset (mm)	0	-0.01005468664627074			
Observation start time	233253996.245902	233253995.22093			
Observation start date	2005-05-23T16:46:36	2005-05-23T16:46:35			
Observation end time	233293919.99772	233293918.97275			
Observation end date	2005-05-24T03:52:00	2005-05-24T03:51:58			
Read mode	TIMED	TIMED			

## 2.3 Aspect



## **2.4 Star Slots**

## **2.5 FID Slots**



## A Summary

### A.1 Status

V&V Scientist	Beth Sundheim
V&V Date (YYYY-MM-DD)	2006.03.05
V&V Edition	1
V&V Disposition and Status	OK
V&V Charge Time	7.80159997

### A.2 Comments