

# V&V Reference Report

## L2 ASCDS Version : 7.6.7.1

Observation 59619 - L2 Version 002  
Chandra X-Ray Center

L2 Processing Date : Mar 10 2006

## Contents

<b>1</b>	<b>Front</b>	<b>2</b>
<b>2</b>	<b>OBI</b>	<b>3</b>
2.1	OBI . . . . .	3
2.1.1	Images . . . . .	3
2.1.2	Bias . . . . .	3
2.1.3	Parameters . . . . .	4
2.1.4	Events . . . . .	4
2.2	Compared Parameters . . . . .	5
2.3	Aspect . . . . .	6
2.4	Star Slots . . . . .	8
2.5	FID Slots . . . . .	8
<b>A</b>	<b>Summary</b>	<b>9</b>
A.1	Status . . . . .	9
A.2	Comments . . . . .	9

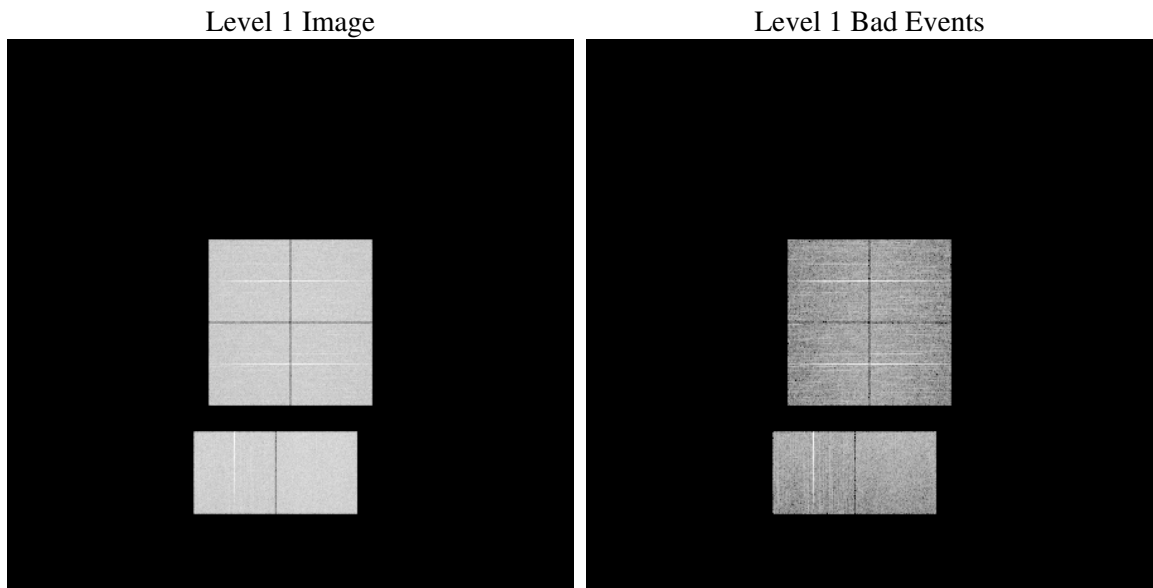
# 1 Front

seq_num	&#160
obs_id	59619
title	ACIS-012367 diagnostics
observer	CHANDRA engineering request/realtime commanding
object	&#160
dtcycle	0
cycle	P
ra_targ	0.0
dec_targ	0.0
ra_nom	4.4599542187025
dec_nom	71.025448111441
roll_nom	84.252027194301
revision	2
ontime	8276.7145841122
livetime	8171.9098404089
ontime0	7823.0209929943
ontime1	7972.1464160085
ontime2	7528.1760446429
ontime3	7709.5054324567
ontime6	8069.4571755528
ontime7	8276.7145841122
l2events	1069934

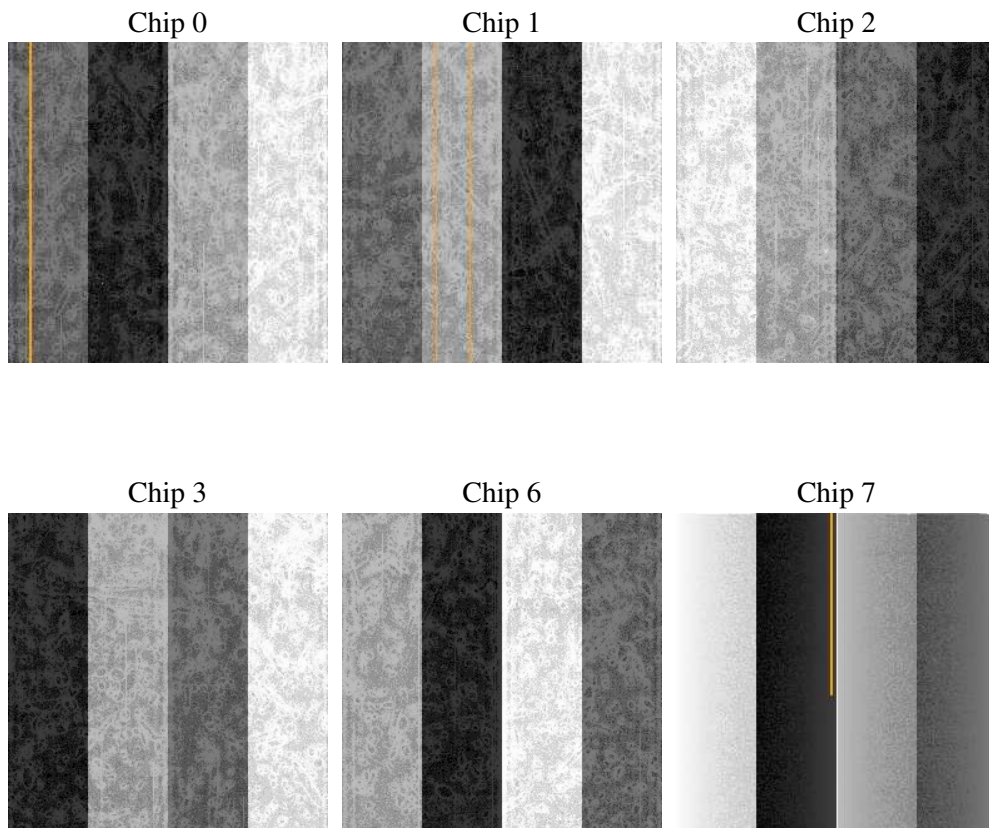
## 2 OBI

### 2.1 OBI

#### 2.1.1 Images



#### 2.1.2 Bias



### 2.1.3 Parameters

obi_num	1
ascdsver	7.6.7.1
caldsver	3.2.1
date	2006-03-10T19:32:00
revision	2

sched_exp_time	0.0
ontime	8277.51207757
ontime0	7823.7774464488
ontime1	7972.8618294597
ontime2	7528.8504180908
ontime3	7710.3439659178
ontime6	8070.0905090272
ontime7	8277.51207757
l1events	1487141

### 2.1.4 Events

	ccd 0	ccd 1	ccd 2	ccd 3	ccd 6	ccd 7
level 1 events	237707	244133	232865	240445	259179	272812
rejected events	56232	58544	57718	59501	64471	65162
rejected %	23%	23%	24%	24%	24%	23%

	ccd 0	ccd 1	ccd 2	ccd 3	ccd 6	ccd 7
grade 0 events	99708	98999	98604	102380	102777	30442
	41%	40%	42%	42%	39%	11%
grade 1 events	537	484	640	628	468	105
	0%	0%	0%	0%	0%	0%
grade 2 events	31814	35406	28547	29928	36474	65849
	13%	14%	12%	12%	14%	24%
grade 3 events	11667	11513	11502	11669	11422	13403
	4%	4%	4%	4%	4%	4%
grade 4 events	11610	11612	11342	11746	11726	12848
	4%	4%	4%	4%	4%	4%
grade 5 events	3395	3333	3080	3518	3632	6746
	1%	1%	1%	1%	1%	2%
grade 6 events	26676	28059	25152	25221	32309	85108
	11%	11%	10%	10%	12%	31%
grade 7 events	52300	54727	53998	55355	60371	58311
	22%	22%	23%	23%	23%	21%

## 2.2 Compared Parameters

Parameter	Planned	Actual	Parameter	Planned	Actual
Instrument	ACIS	ACIS	Obspar format version number	6	6
Detector	ACIS-012367	ACIS-012367	Obspar file type	PREDICTED	ACTUAL
Grating	NONE	NONE	Obspar update status	NONE	UPDATED
Data mode	FAINT	FAINT	On-chip summing requested	N	N
Observation mode	SECONDARY	SECONDARY	Subarray requested	NONE	NONE
Pointing RA	0	4.459954218702533	Alternating exposures requested	N	N
Pointing Dec	0	71.02544811144097	Primary exposure time	3.2	3.2
Pointing Roll	0.0	84.25202719430132			
SIM focus pos (mm)	-0.782348	-0.7809083437167272			
SIM defocus (mm)	0	0.7524282956875696			
SIM translation stage pos (mm)	-233.592463	250.466033080201			
SIM translation stage offset (mm)	0	-0.01005468664627074			
Observation start time	234890255.070577	234890254.04556			
Observation start date	2005-06-11T15:17:35	2005-06-11T15:17:34			
Observation end time	234911564.821551	234911563.79653			
Observation end date	2005-06-11T21:12:45	2005-06-11T21:12:43			
Read mode	TIMED	TIMED			

## 2.3 Aspect



## **2.4 Star Slots**

## **2.5 FID Slots**



## A Summary

### A.1 Status

V&V Scientist	Jen Lauer
V&V Date (YYYY-MM-DD)	2006.03.10
V&V Edition	1
V&V Disposition and Status	OK
V&V Charge Time	8.27671458

### A.2 Comments

ACIS focal plane temp was above the calibration limits for the entire observation.