

V&V Reference Report

L2 ASCDS Version : 7.6.7.1

Observation 59589 - L2 Version 002
Chandra X-Ray Center

L2 Processing Date : Mar 12 2006

Contents

1	Front	2
2	OBI	3
2.1	OBI	3
2.1.1	Images	3
2.1.2	Bias	3
2.1.3	Parameters	4
2.1.4	Events	4
2.2	Compared Parameters	5
2.3	Aspect	6
2.4	Star Slots	8
2.5	FID Slots	8
A	Summary	9
A.1	Status	9
A.2	Comments	9

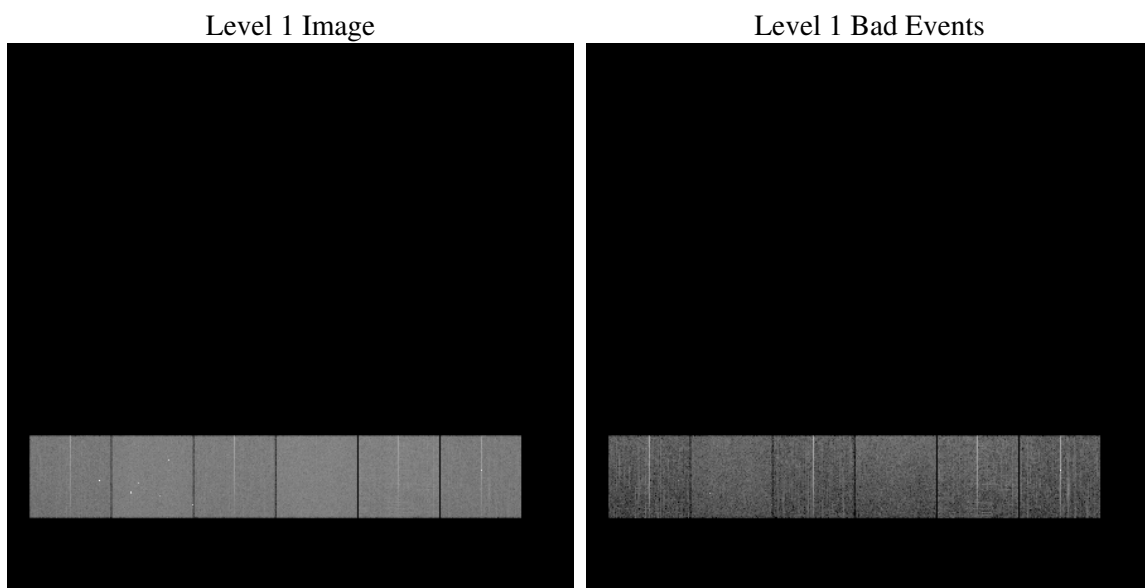
1 Front

seq_num	
obs_id	59589
title	ACIS-456789 diagnostics
observer	CHANDRA engineering request/realtime commanding
object	
dtcycle	0
cycle	P
ra_targ	0.0
dec_targ	0.0
ra_nom	268.98242970609
dec_nom	3.177433511483
roll_nom	199.27965403924
revision	2
ontime	7795.1999709606
livetime	7696.4924552224
ontime4	6476.904640913
ontime5	7795.1999709606
ontime6	7078.9460350275
ontime7	7795.1999709606
ontime8	7299.3317657709
ontime9	6797.5961107612
l2events	987746

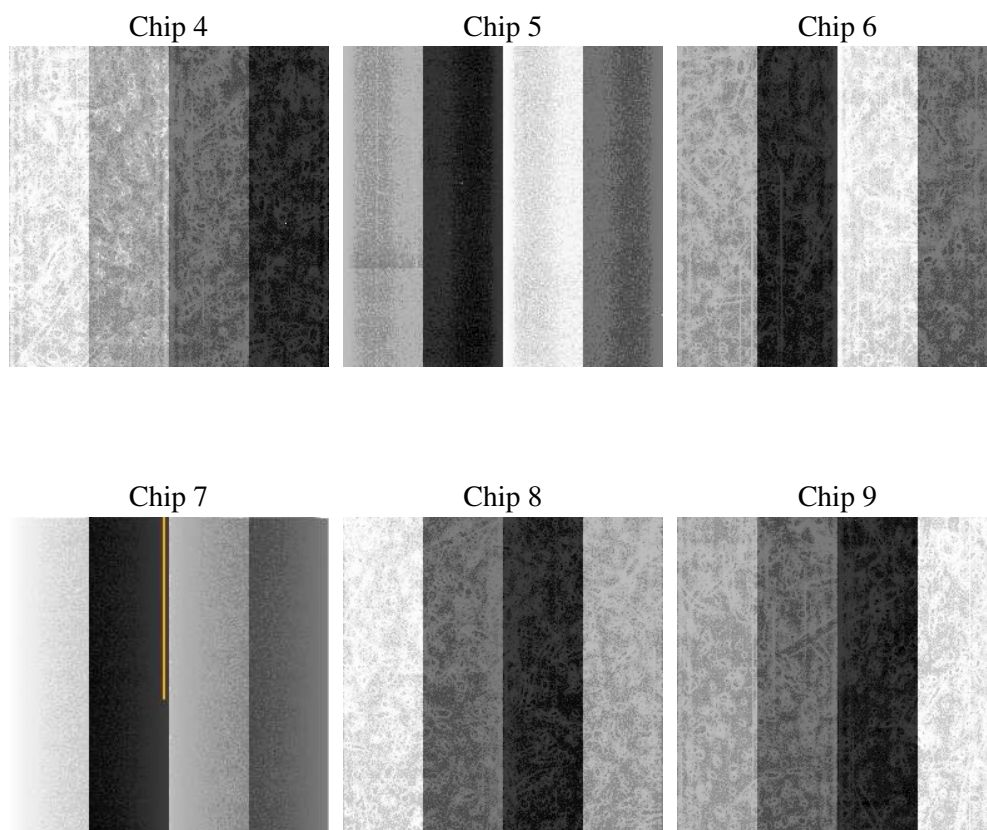
2 OBI

2.1 OBI

2.1.1 Images



2.1.2 Bias



2.1.3 Parameters

obi_num	0
ascdsver	7.6.7.1
caldbver	3.2.1
date	2006-03-12T06:26:36
revision	2

sched_exp_time	0.0
ontime	7797.8532263339
ontime4	6478.7786770761
ontime5	7797.8532263339
ontime6	7081.5992904007
ontime7	7797.8532263339
ontime8	7301.9850211442
ontime9	6799.6343069375
l1events	1404394

2.1.4 Events

	ccd 4	ccd 5	ccd 6	ccd 7	ccd 8	ccd 9
level 1 events	201860	248147	228595	259195	251201	215396
rejected events	52837	61640	55250	58754	64727	55497
rejected %	26%	24%	24%	22%	25%	25%

	ccd 4	ccd 5	ccd 6	ccd 7	ccd 8	ccd 9
grade 0 events	86735	23040	93931	34743	100082	87724
	42%	9%	41%	13%	39%	40%
grade 1 events	717	135	498	102	526	1598
	0%	0%	0%	0%	0%	0%
grade 2 events	23480	84849	30290	59461	33212	27595
	11%	34%	13%	22%	13%	12%
grade 3 events	9868	6162	10835	14766	12277	10260
	4%	2%	4%	5%	4%	4%
grade 4 events	9915	6178	10757	14285	12439	10270
	4%	2%	4%	5%	4%	4%
grade 5 events	3066	6111	3527	7044	4510	3714
	1%	2%	1%	2%	1%	1%
grade 6 events	19093	66358	27602	77265	28547	24109
	9%	26%	12%	29%	11%	11%
grade 7 events	48986	55314	51155	51529	59608	50126
	24%	22%	22%	19%	23%	23%

2.2 Compared Parameters

Parameter	Planned	Actual	Parameter	Planned	Actual
Instrument	ACIS	ACIS	Obspar format version number	6	6
Detector	ACIS-456789	ACIS-456789	Obspar file type	PREDICTED	ACTUAL
Grating	NONE	NONE	Obspar update status	NONE	UPDATED
Data mode	FAINT	FAINT	On-chip summing requested	N	N
Observation mode	SECONDARY	SECONDARY	Subarray requested	NONE	NONE
Pointing RA	0	268.9824297060862	Alternating exposures requested	N	N
Pointing Dec	0	3.177433511483021	Primary exposure time	3.2	3.2
Pointing Roll	0.0	199.2796540392418			
SIM focus pos (mm)	-0.684267	-0.6828225247311905			
SIM defocus (mm)	0	0.8505141146731063			
SIM translation stage pos (mm)	-190.132523	250.466033080201			
SIM translation stage offset (mm)	0	-0.01005468664627074			
Observation start time	236452463.791907	236452462.7669			
Observation start date	2005-06-29T17:14:24	2005-06-29T17:14:22			
Observation end time	236467484.142594	236467483.11759			
Observation end date	2005-06-29T21:24:44	2005-06-29T21:24:43			
Read mode	TIMED	TIMED			

2.3 Aspect

2.4 Star Slots

2.5 FID Slots

A Summary

A.1 Status

V&V Scientist	Beth Sundheim
V&V Date (YYYY-MM-DD)	2006.03.13
V&V Edition	1
V&V Disposition and Status	OK
V&V Charge Time	7.79519997

A.2 Comments