

V&V Reference Report

L2 ASCDS Version : 8.5.1

Observation 5909 - L2 Version 4
Chandra X-Ray Center

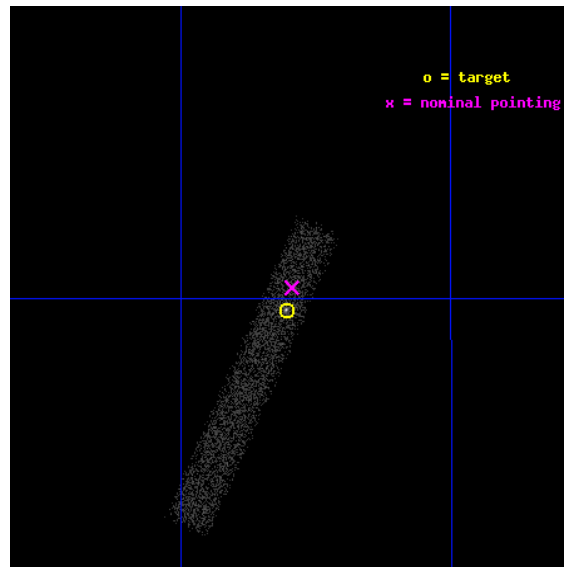
L2 Processing Date : Dec 17 2012

Contents

1	Front	2
2	OBI	3
2.1	OBI	3
2.1.1	Images	3
2.1.2	Bias	3
2.1.3	Parameters	4
2.1.4	Events	4
2.2	Compared Parameters	5
2.3	Aspect	6
2.4	Star Slots	9
2.4.1	Slot 3	9
2.4.2	Slot 4	10
2.4.3	Slot 5	11
2.4.4	Slot 6	12
2.4.5	Slot 7	13
2.5	FID Slots	14
2.5.1	Slot 0	14
2.5.2	Slot 1	15
2.5.3	Slot 2	16
A	Summary	17
A.1	Status	17
A.2	Comments	17

1 Front

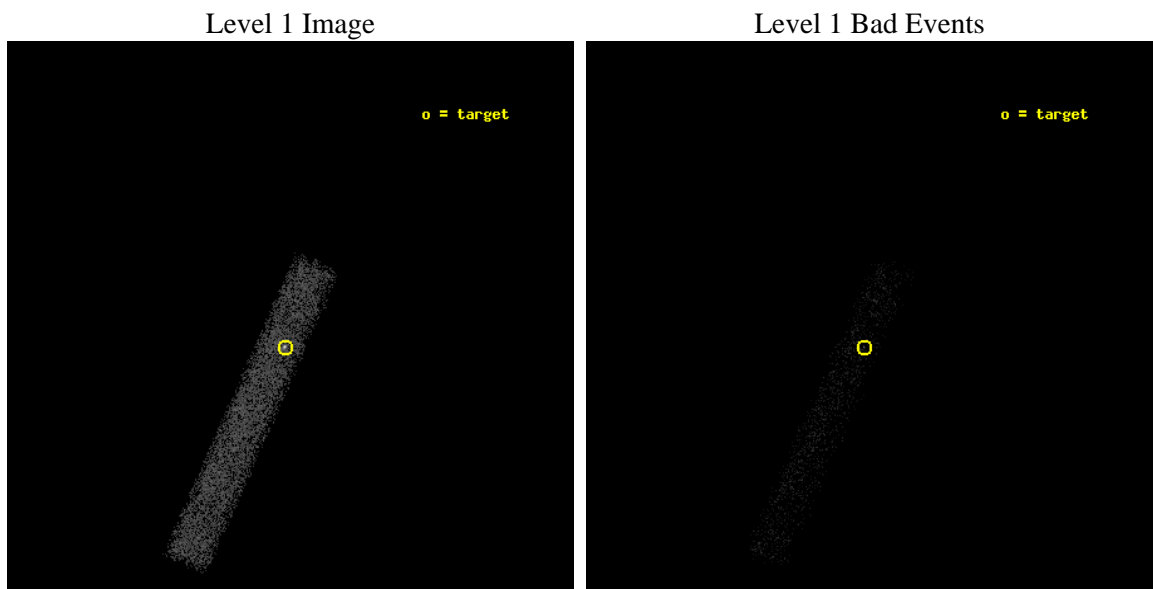
seq_num	600428	Sequence number
obs_id	5909	Observation id
title	Dust-to-gas ratio in the z=0.44 lens galaxy B1152+199	Proposal tit
observer	Dr. Kristian Pedersen	Principal investigator
object	B1152+199	Source name
dtcycle	0	
cycle	P	events from which exps? Prim/Second/Both
ra_targ	178.82625	Observer's specified target RA [deg]
dec_targ	19.661722	Observer's specified target Dec [deg]
ra_nom	178.82376733484	Nominal RA [deg]
dec_nom	19.67113249917	Nominal Dec [deg]
roll_nom	113.95748051144	Nominal Roll [deg]
revision	4	Processing version of data
ontime	9132.0001360476	Sum of GTIs [s]
livetime	8282.2420969052	Livetime [s]
ontime7	9132.0001360476	Sum of GTIs [s]
l2events	7135	Number of level 2 events



2 OBI

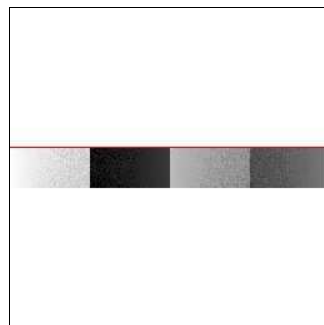
2.1 OBI

2.1.1 Images



2.1.2 Bias

Chip 7



2.1.3 Parameters

obi_num	0	Obi number	sched_exp_time	9000.000000	[s] Scheduled observation exposure time
ascdsver	8.5.1	Processing system revision	ontime	9132.0001360476	Sum of GTIs [s]
caldsver	4.5.5	 	ontime7	9132.0001360476	Sum of GTIs [s]
date	2012-12-17T19:26:50	Date and time of file creation	l1events	15439	Number of level 1 events
revision	4	Processing version of data			

2.1.4 Events

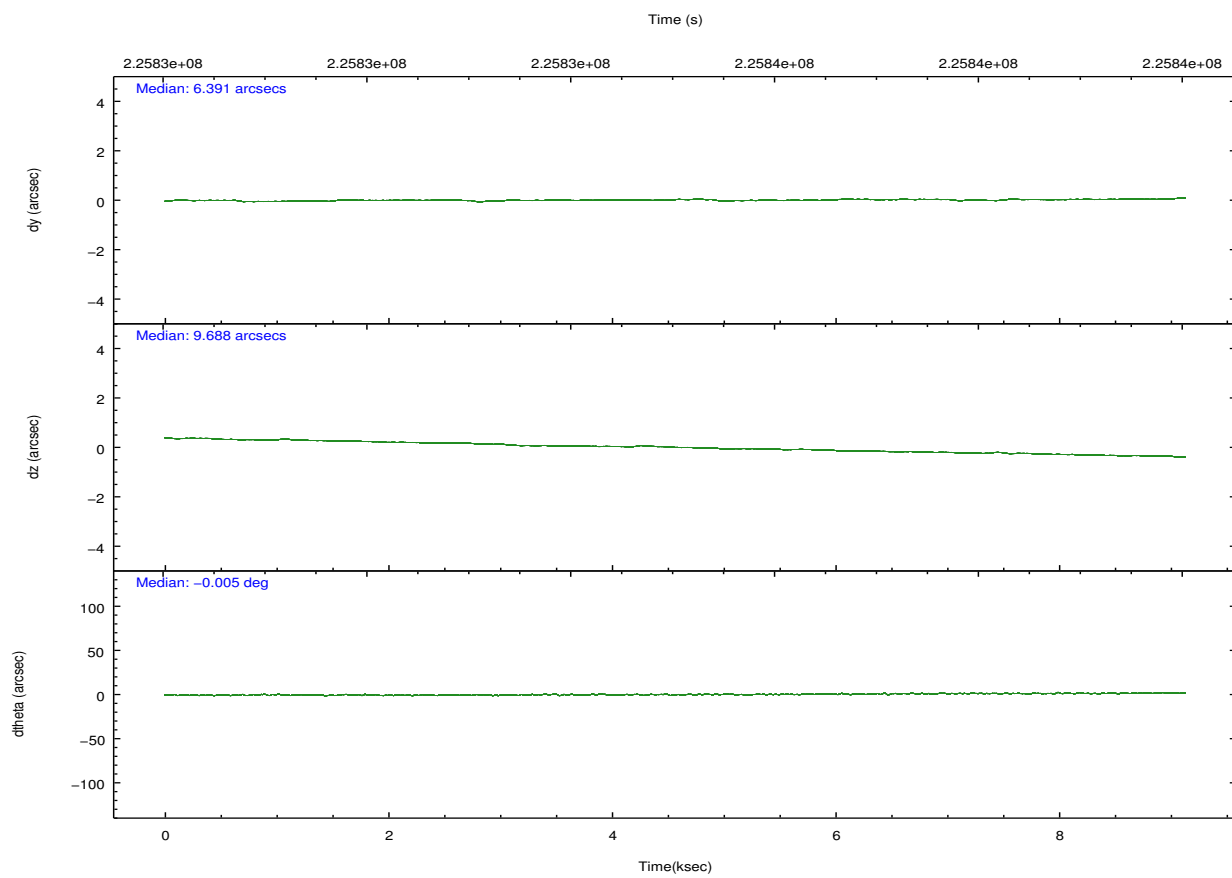
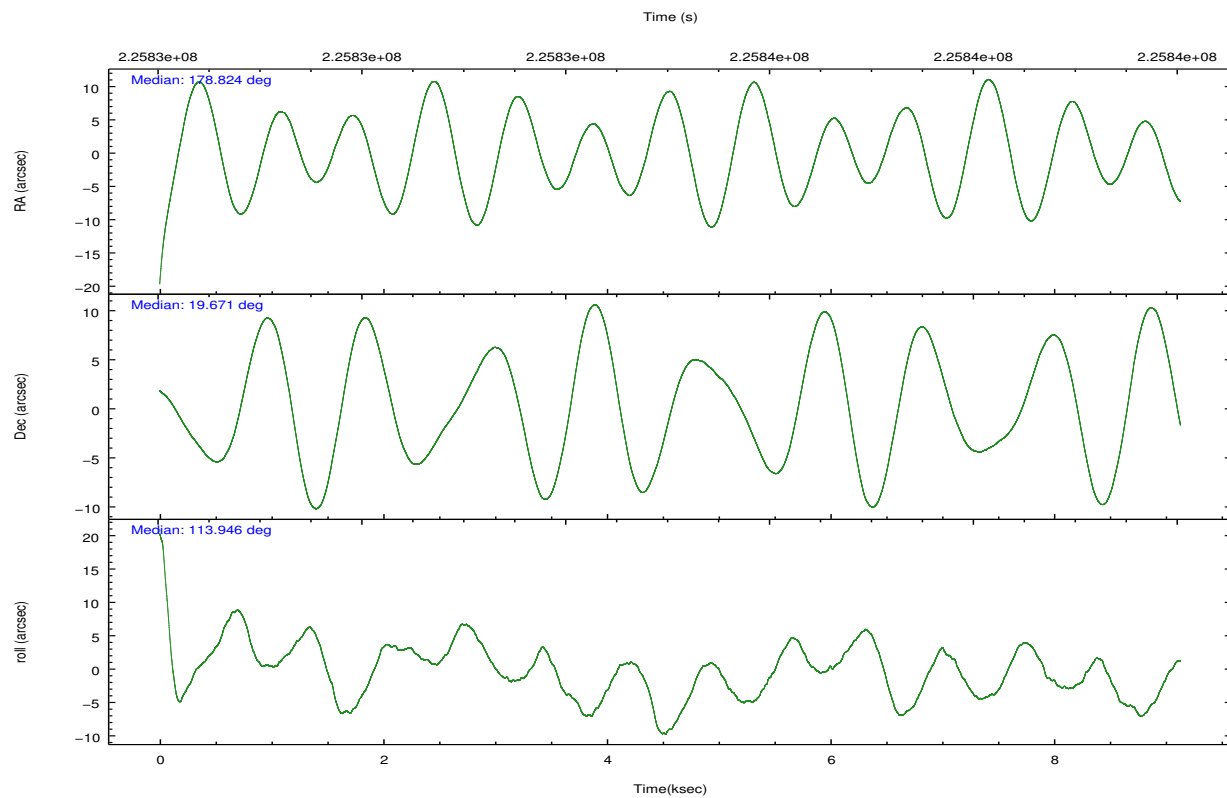
	ccd 7
level 1 events	15439
rejected events	8092
rejected %	52%

	ccd 7
grade 0 events	1285
	8%
grade 1 events	14
	0%
grade 2 events	1610
	10%
grade 3 events	1003
	6%
grade 4 events	959
	6%
grade 5 events	1337
	8%
grade 6 events	3187
	20%
grade 7 events	6044
	39%

2.2 Compared Parameters

Parameter	Planned	Actual	Parameter	Planned	Actual
Instrument	ACIS	ACIS	Obspar format version number	7	7
Detector	ACIS-7	ACIS-7	Obspar file type	PREDICTED	ACTUAL
Grating	NONE	NONE	Obspar update status	NONE	UPDATED
Data mode	VFAINT	VFAINT	Number of optional ACIS chips dropped	0	0
Observation mode	POINTING	POINTING	On-chip summing requested	N	N
[deg] Pointing RA	178.847399	178.8237673348353	Subarray requested	CUSTOM	1/8
[deg] Pointing Dec	19.655379	19.67113249917019	Subarray start row	449	449
[deg] Pointing Roll	113.792888	113.9574805114387	Subarray row count	128	128
[mm] SIM focus pos	-0.684267	-0.6828225247311905	Alternating exposures requested	N	N
[mm] SIM defocus	0	0.001444936568705701	[s] Primary exposure time	0.000000	0.4
[mm] SIM translation stage pos	-190.132523	-190.1400660498719			
[mm] SIM translation stage offset	0	0.00754346686406393			
[s] Observation start time (MET)	225830590.184000	225829355.62107			
Observation start date	2005-02-26T18:42:06	2005-02-26T18:22:35			
[s] Observation end time (MET)	225839590.184000	225840007.42155			
Observation end date	2005-02-26T21:12:06	2005-02-26T21:20:07			
Read mode	TIMED	TIMED			

2.3 Aspect

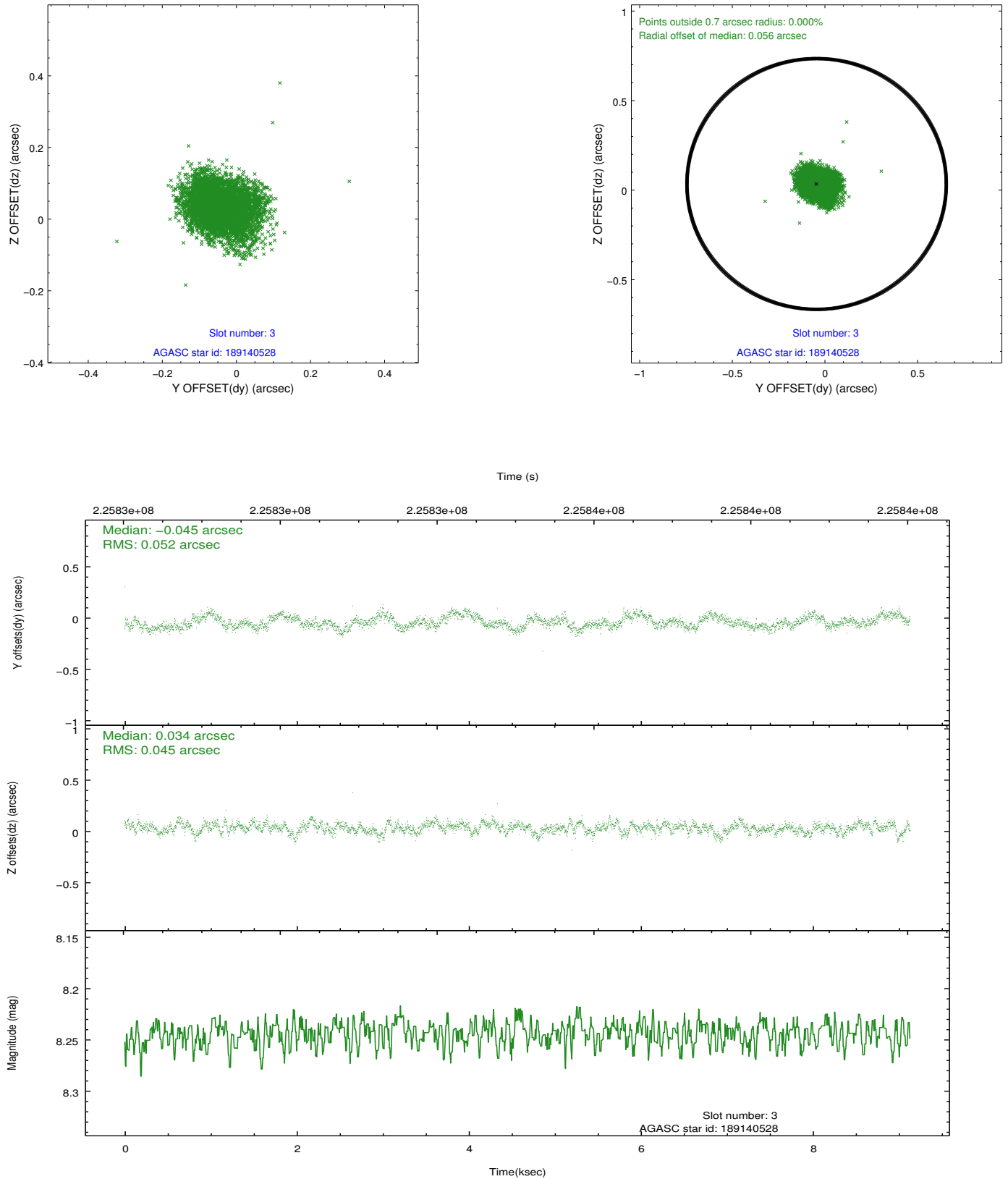


Slot Statistics

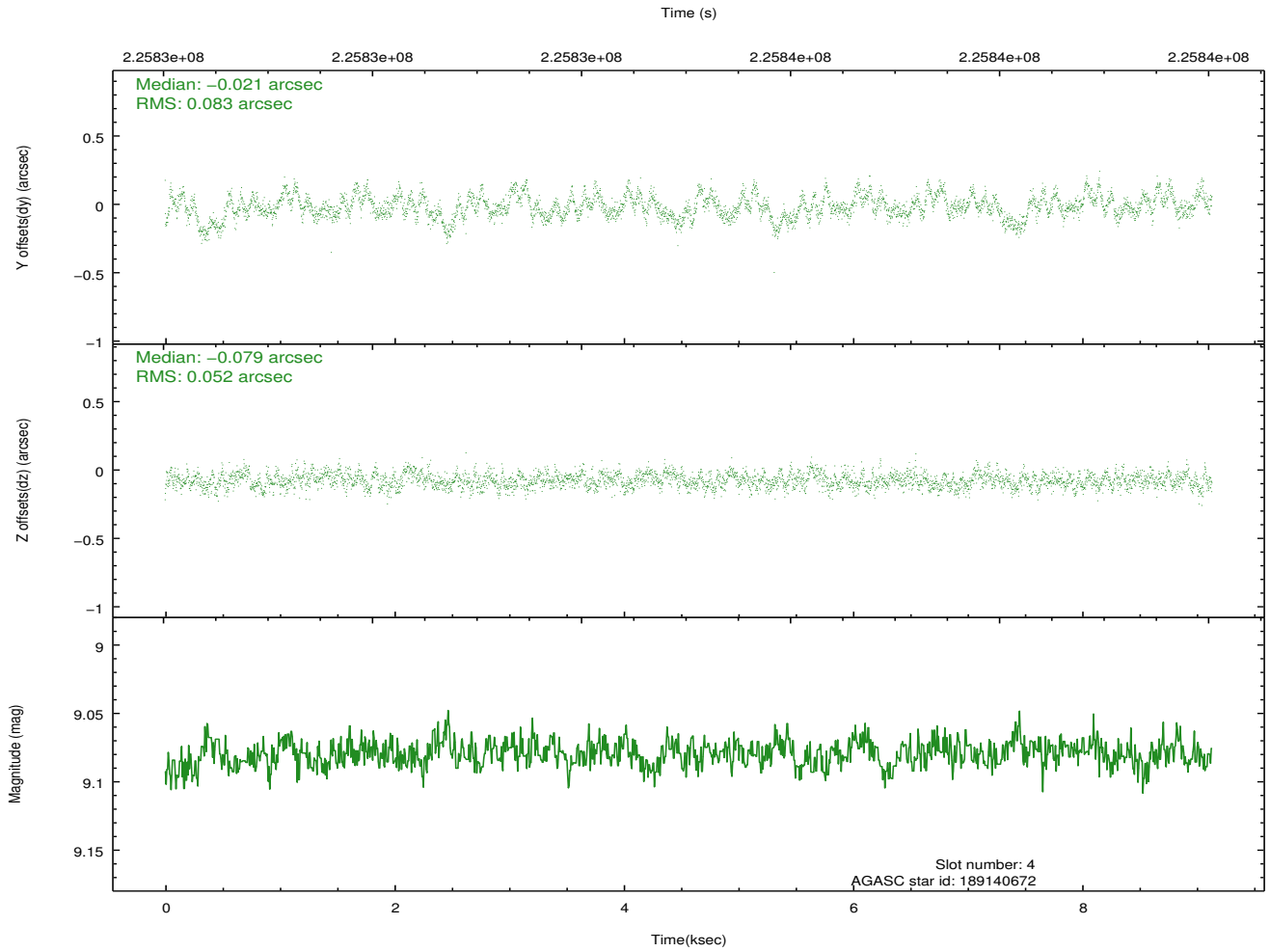
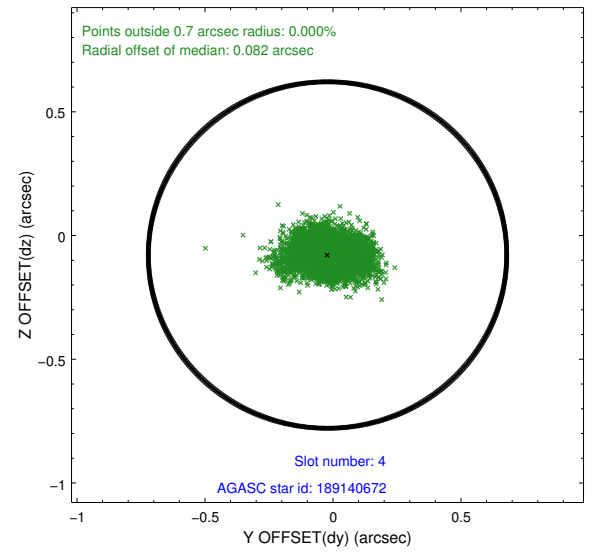
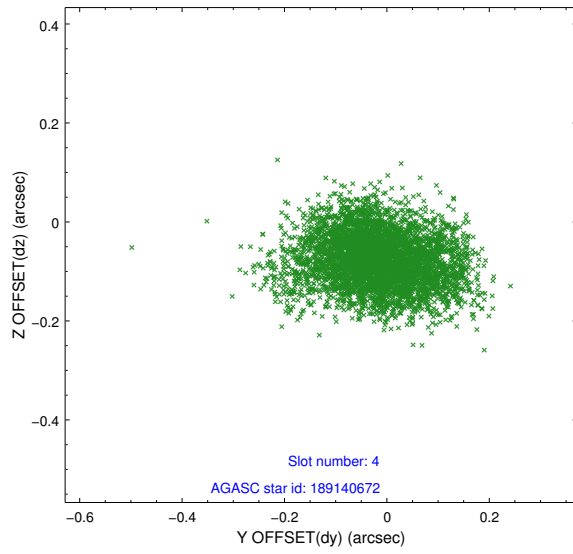
slot	status	id	mag	n_pts	med_dy	med_dz	dr1	dr2	ra	dec	mean_y	mean_z
0	FID	ACIS-S-2	7.10	2228	-0.058	-0.034	0.011	0.019	0.000000	0.000000	-759.16	-1730.97
1	FID	ACIS-S-4	7.20	2228	0.098	0.038	0.015	0.032	0.000000	0.000000	2153.97	177.00
2	FID	ACIS-S-5	7.23	2228	-0.068	0.006	0.010	0.016	0.000000	0.000000	-1811.27	171.28
3	GUIDE	189140528	8.24	4453	-0.045	0.034	0.073	0.117	178.633618	19.411233	-510.35	1021.01
4	GUIDE	189140672	9.08	4454	-0.021	-0.079	0.102	0.174	178.601271	18.918622	-2088.81	1836.91
5	GUIDE	189143880	8.02	4456	-0.031	0.136	0.100	0.148	179.370549	19.983904	371.61	-2095.07
6	GUIDE	189152000	10.74	4285	0.116	-0.100	0.271	0.426	178.365175	19.560035	347.80	1634.35
7	GUIDE	189140696	8.43	4455	-0.028	0.017	0.075	0.122	178.646164	19.427835	-472.80	958.25

2.4 Star Slots

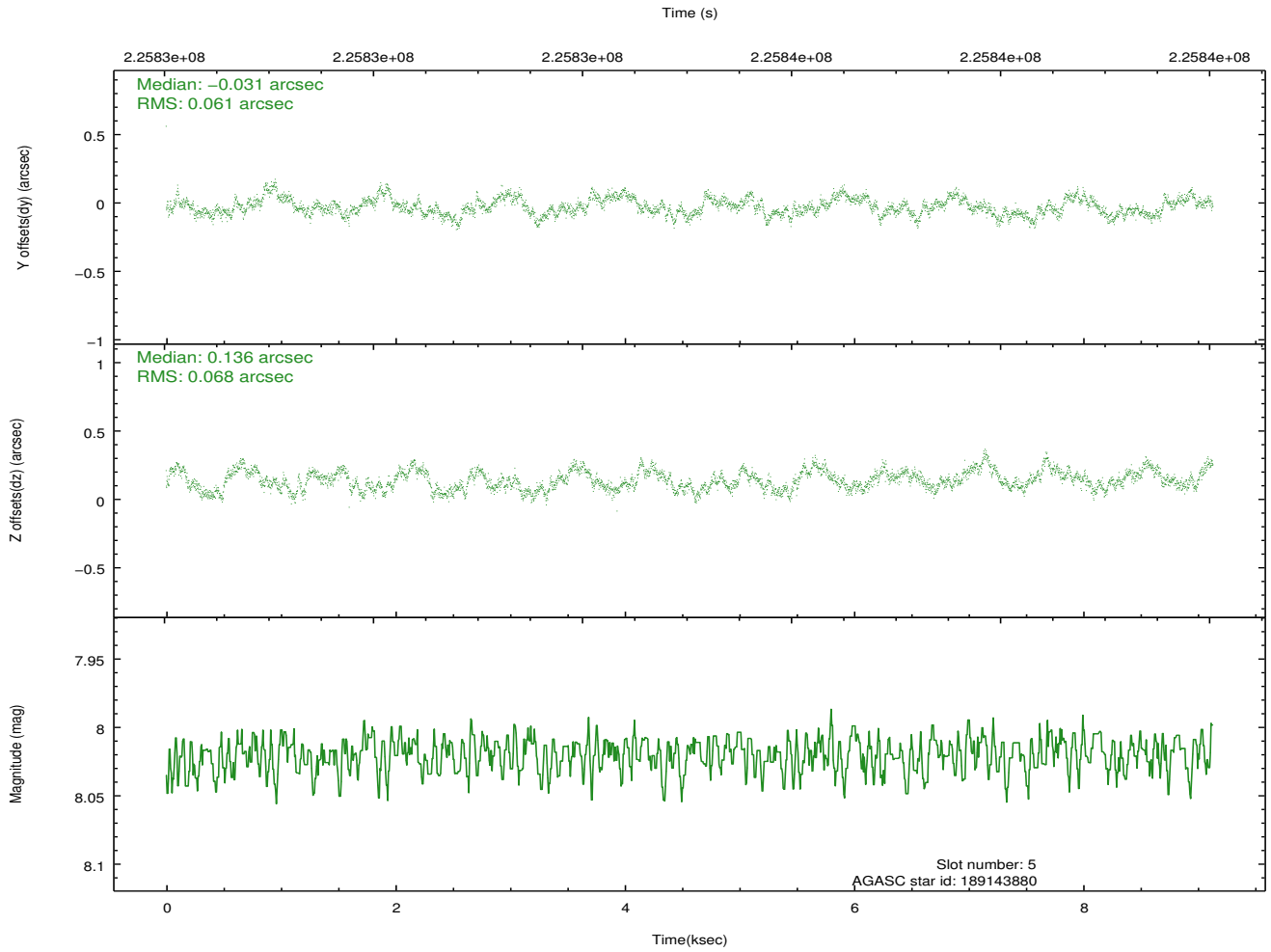
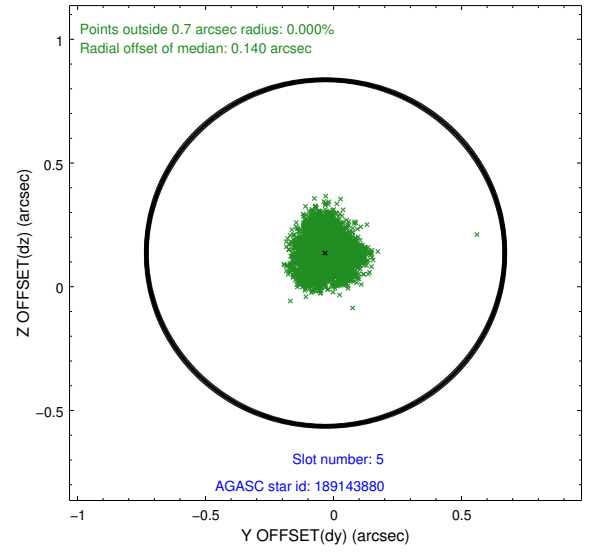
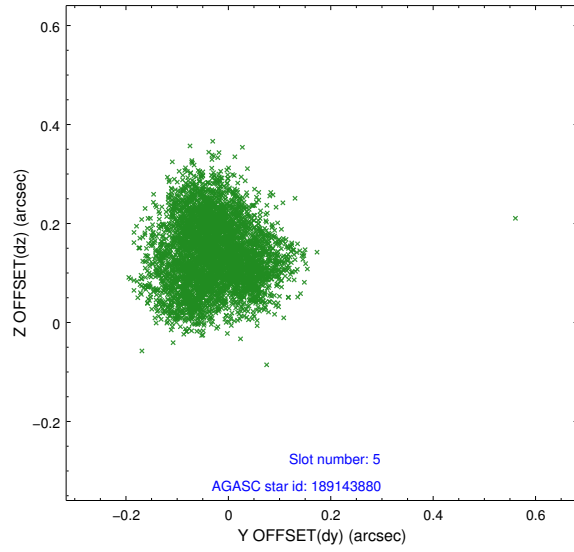
2.4.1 Slot 3



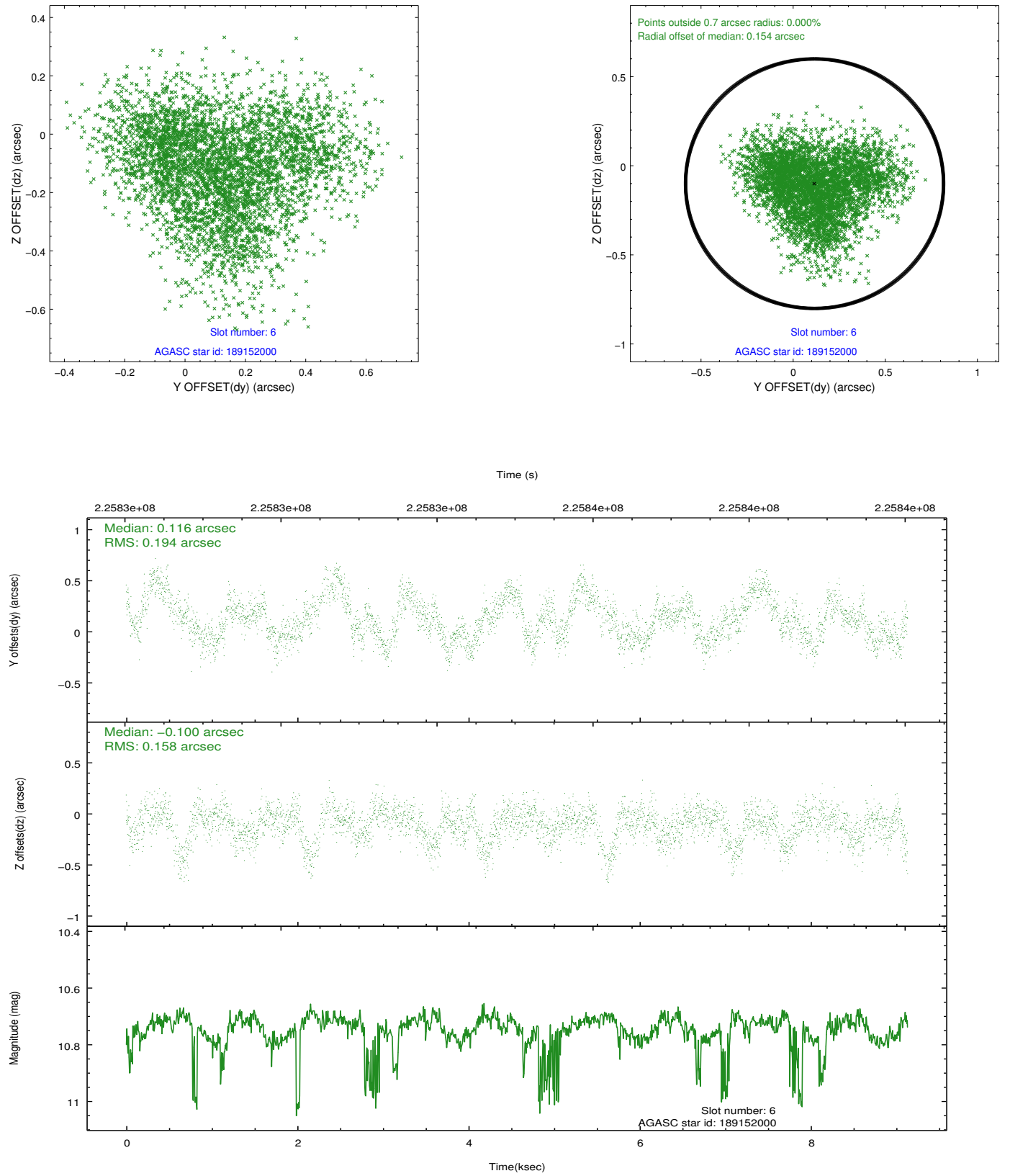
2.4.2 Slot 4



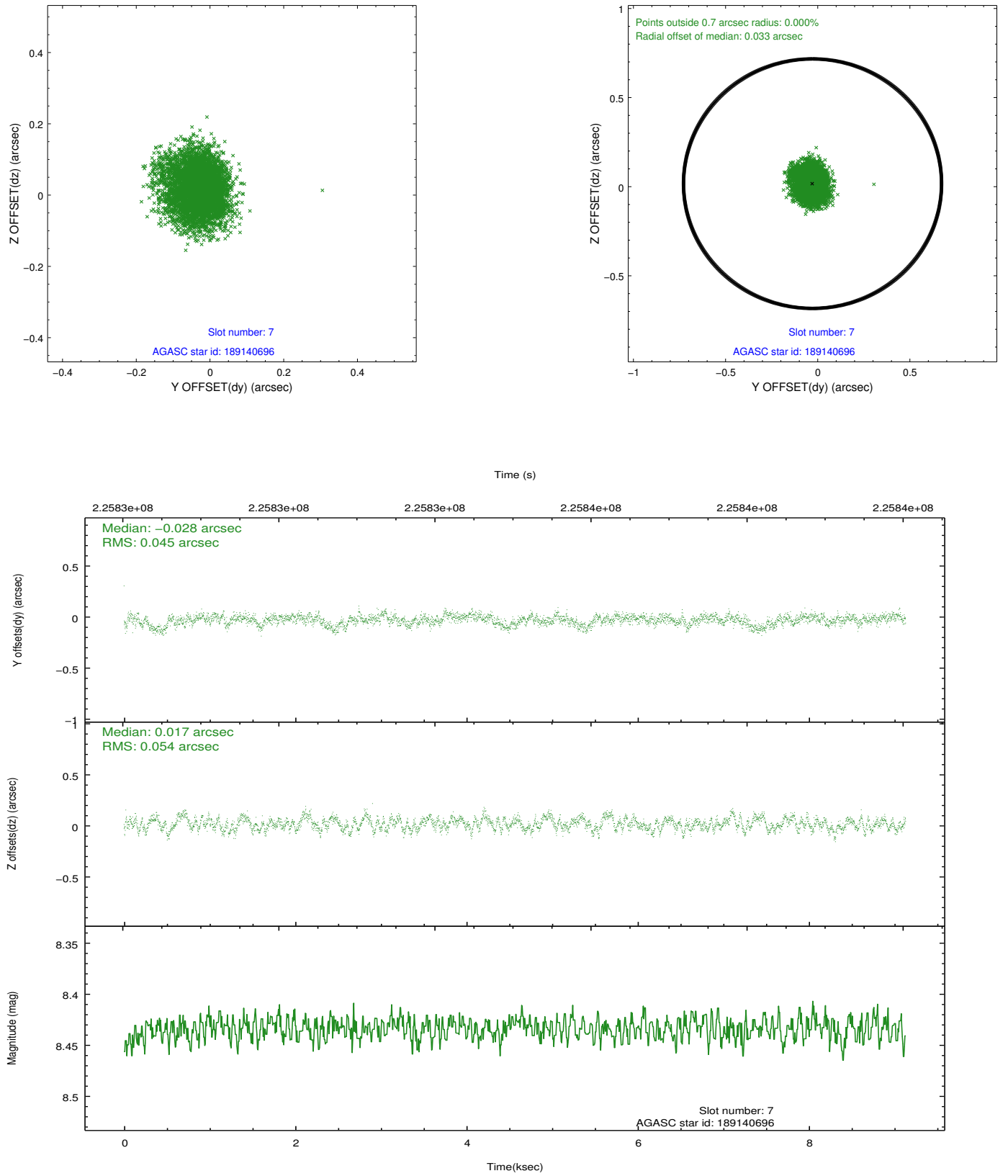
2.4.3 Slot 5



2.4.4 Slot 6

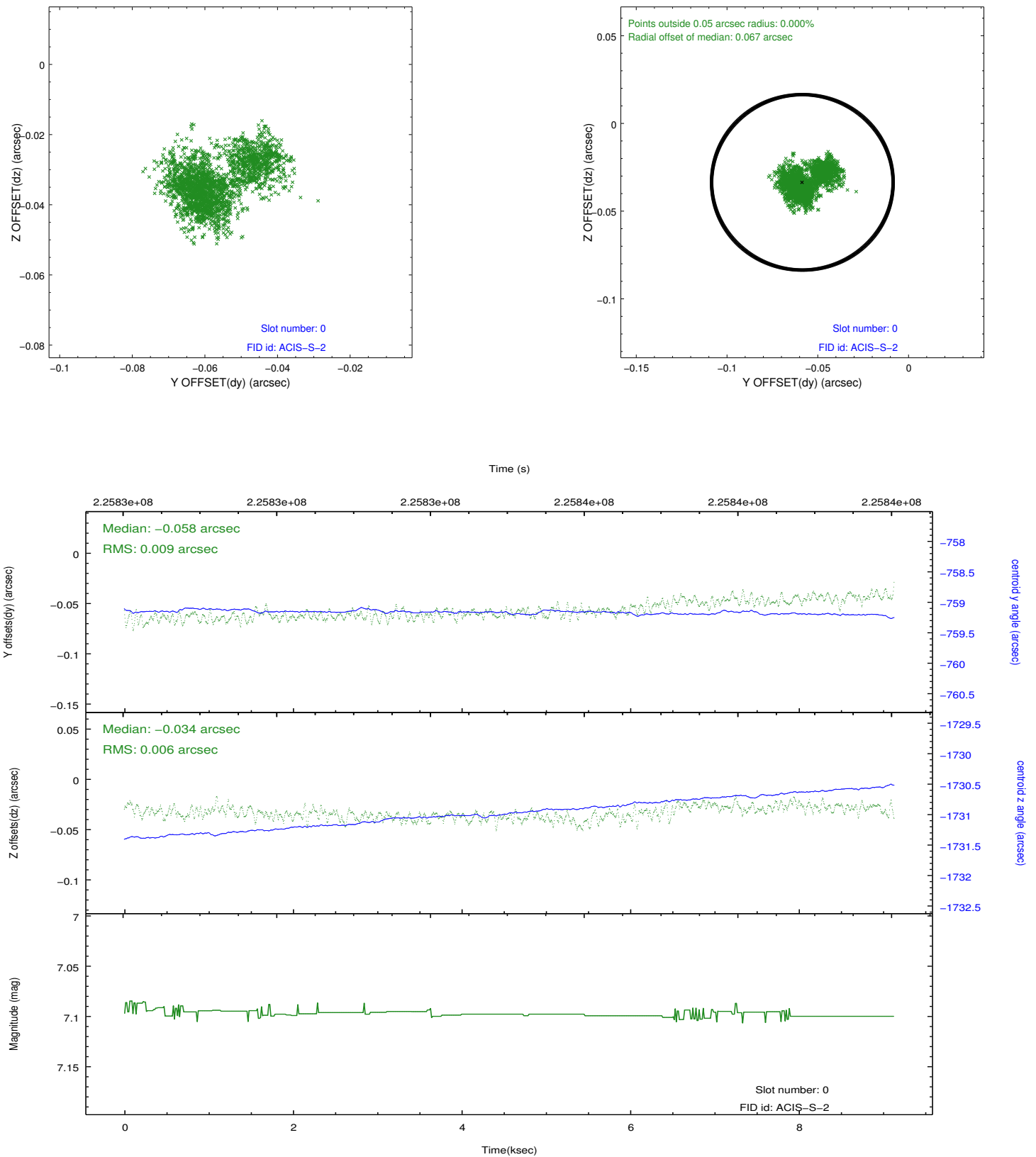


2.4.5 Slot 7

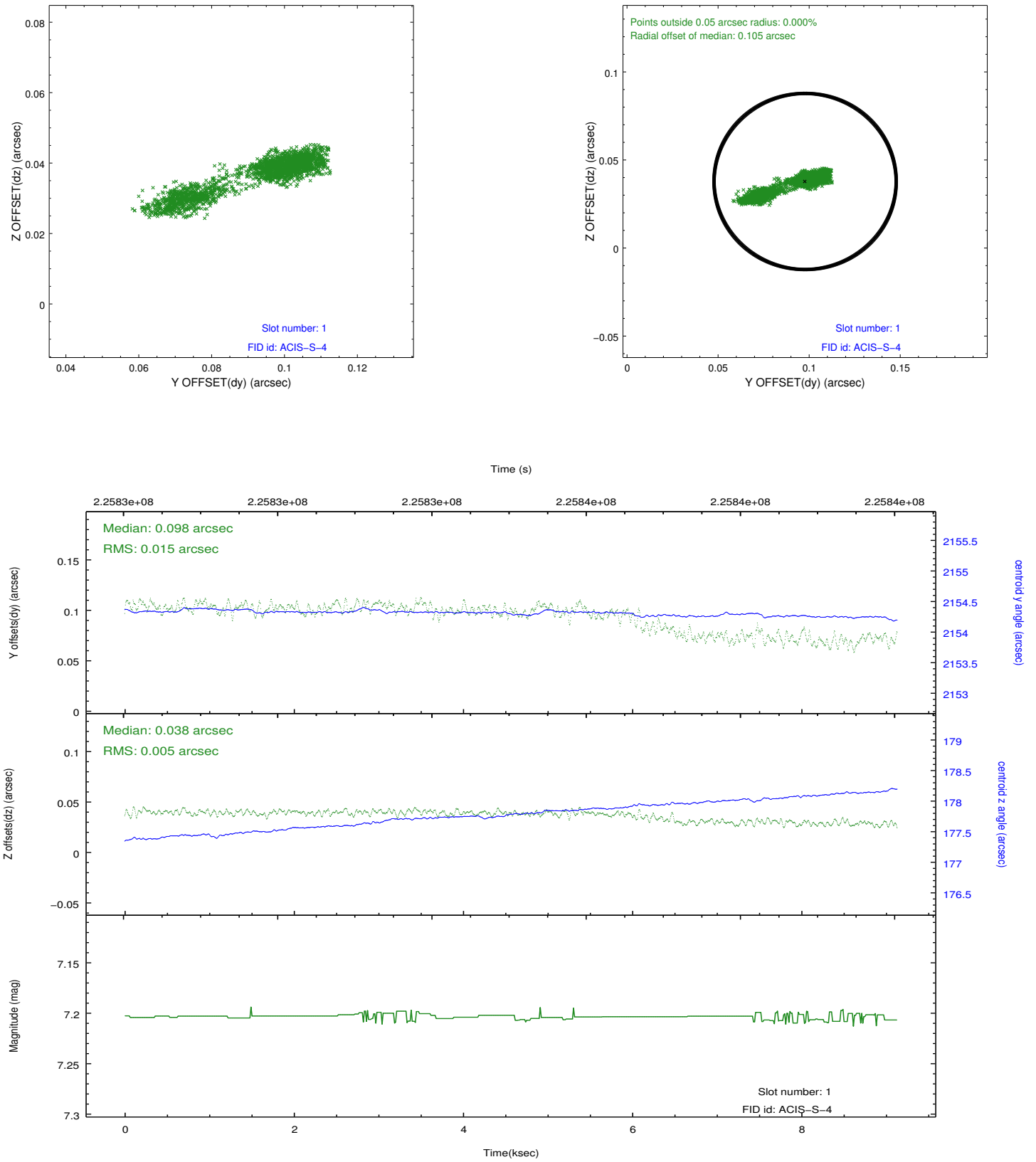


2.5 FID Slots

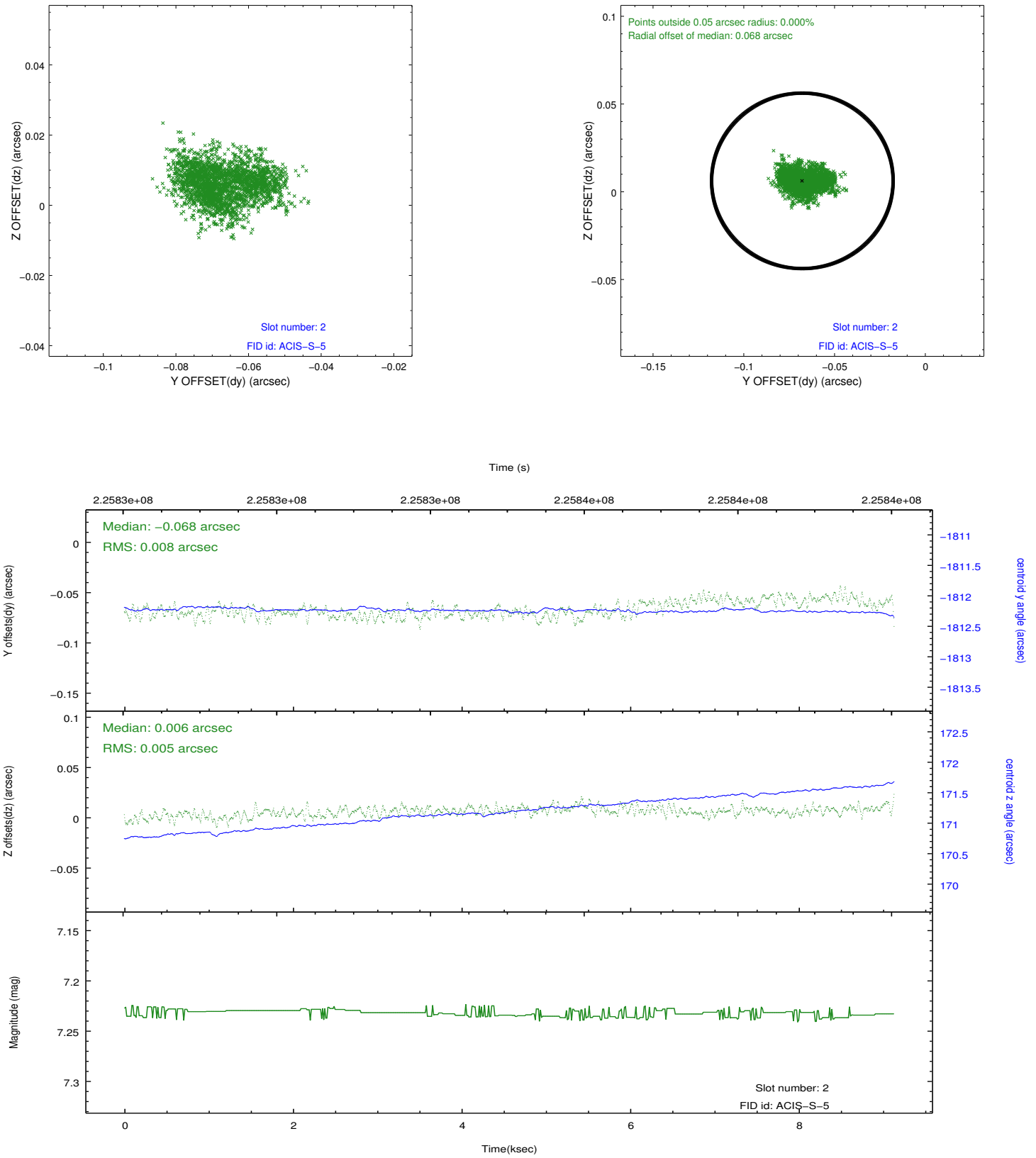
2.5.1 Slot 0



2.5.2 Slot 1



2.5.3 Slot 2



A Summary

A.1 Status

V&V Scientist	Jen Lauer
V&V Date (YYYY-MM-DD)	2013.01.10
V&V Edition	1
V&V Disposition and Status	OK
V&V Charge Time	9.132

A.2 Comments