

V&V Reference Report

L2 ASCDS Version : 8.4.3

Observation 58939 - L2 Version 2
Chandra X-Ray Center

L2 Processing Date : Apr 2 2012

Contents

1	Front	2
2	OBI	3
2.1	OBI	3
2.1.1	Images	3
2.1.2	Bias	3
2.1.3	Parameters	4
2.1.4	Events	4
2.2	Compared Parameters	5
2.3	Star Slots	6
2.4	FID Slots	6
A	Summary	7
A.1	Status	7
A.2	Comments	7

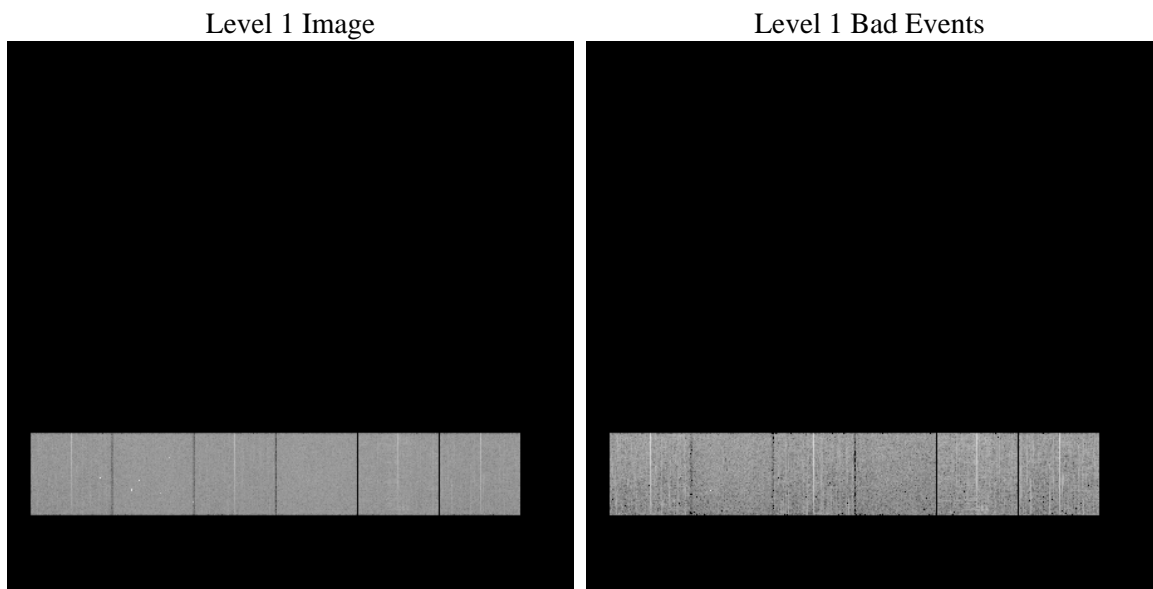
1 Front

seq_num	 	Sequence number
obs_id	58939	Observation id
title	ACIS-456789 diagnostics	Proposal title
observer	CHANDRA engineering request/realtime commanding	Principal investig
object	 	Source name
dtcycle	0	
cycle	P	events from which exps? Prim/Second/Both
ra_targ	0.0	Observer's specified target RA [deg]
dec_targ	0.0	Observer's specified target Dec [deg]
ra_nom	270.02710596065	Nominal RA [deg]
dec_nom	-49.975796311392	Nominal Dec [deg]
roll_nom	31.138971318138	Nominal Roll [deg]
revision	2	Processing version of data
ontime	4742.3999823332	Sum of GTIs [s]
livetime	4682.3488582264	Livetime [s]
ontime4	4742.3999823332	Sum of GTIs [s]
ontime5	4742.3999823332	Sum of GTIs [s]
ontime6	4742.3999823332	Sum of GTIs [s]
ontime7	4742.3999823332	Sum of GTIs [s]
ontime8	4742.3999823332	Sum of GTIs [s]
ontime9	4742.3999823332	Sum of GTIs [s]
l2events	534455	Number of level 2 events

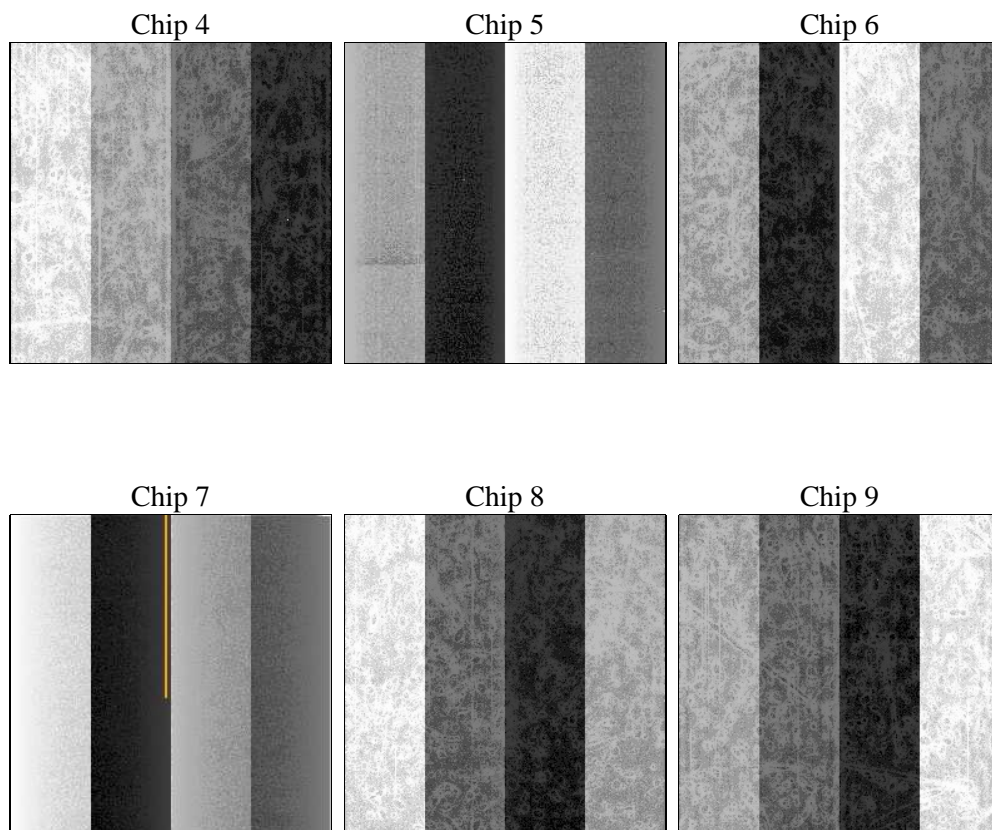
2 OBI

2.1 OBI

2.1.1 Images



2.1.2 Bias



2.1.3 Parameters

obi_num	0	Obi number	sched_exp_time	0.0	[s] Scheduled observation exposure time
ascdsver	8.4.3.1	Processing system revision	ontime	4742.3999823332	Sum of GTIs [s]
caldsver	4.4.9	 	ontime4	4742.3999823332	Sum of GTIs [s]
date	2012-04-02T21:39:48	Date and time of file creation	ontime5	4742.3999823332	Sum of GTIs [s]
revision	2	Processing version of data	ontime6	4742.3999823332	Sum of GTIs [s]
			ontime7	4742.3999823332	Sum of GTIs [s]
			ontime8	4742.3999823332	Sum of GTIs [s]
			ontime9	4742.3999823332	Sum of GTIs [s]
			l1events	824492	Number of level 1 events

2.1.4 Events

	ccd 4	ccd 5	ccd 6	ccd 7	ccd 8	ccd 9		ccd 4	ccd 5	ccd 6	ccd 7	ccd 8	ccd 9
level 1 events	131678	138344	134776	141180	145650	132864	grade 0 events	50309	19857	50084	24001	51629	48015
rejected events	44836	38176	41873	34267	47117	44013		38%	14%	37%	17%	35%	36%
rejected %	34%	27%	31%	24%	32%	33%	grade 1 events	463	138	287	104	352	381
								0%	0%	0%	0%	0%	0%
							grade 2 events	13736	35673	16145	23512	17764	15417
								10%	25%	11%	16%	12%	11%
							grade 3 events	5889	5491	5856	10463	6809	6019
								4%	3%	4%	7%	4%	4%
							grade 4 events	5833	5429	5943	10481	6643	5772
								4%	3%	4%	7%	4%	4%
							grade 5 events	2358	5595	2586	5813	3039	2596
								1%	4%	1%	4%	2%	1%
							grade 6 events	11118	33783	14936	38521	15769	13686
								8%	24%	11%	27%	10%	10%
							grade 7 events	41972	32378	38939	28285	43645	40978
								31%	23%	28%	20%	29%	30%

2.2 Compared Parameters

Parameter	Planned	Actual	Parameter	Planned	Actual
Instrument	ACIS	ACIS	Obspar format version number	7	7
Detector	ACIS-456789	ACIS-456789	Obspar file type	PREDICTED	ACTUAL
Grating	NONE	NONE	Obspar update status	NONE	UPDATED
Data mode	FAINT	FAINT	On-chip summing requested	N	N
Observation mode	SECONDARY	SECONDARY	Subarray requested	NONE	NONE
[deg] Pointing RA	0	270.0271059606482	Alternating exposures requested	N	N
[deg] Pointing Dec	0	-49.97579631139156	[s] Primary exposure time	3.2	3.2
[deg] Pointing Roll	0.0	31.13897131813756			
[mm] SIM focus pos	-0.684267	-0.7809083437167272			
[mm] SIM defocus	0	0.7524282956875696			
[mm] SIM translation stage pos	-190.132523	250.466033080201			
[mm] SIM translation stage offset	0	-0.01005468664627074			
[s] Observation start time (MET)	265923630.054775	265923629.02978			
Observation start date	2006-06-05T19:40:30	2006-06-05T19:40:29			
[s] Observation end time (MET)	265939400.705511	265939399.68051			
Observation end date	2006-06-06T00:03:21	2006-06-06T00:03:19			
Read mode	TIMED	TIMED			

2.3 Star Slots

2.4 FID Slots

A Summary

A.1 Status

V&V Scientist	Beth Sundheim
V&V Date (YYYY-MM-DD)	2012.04.04
V&V Edition	1
V&V Disposition and Status	OK
V&V Charge Time	4.7423999823332

A.2 Comments