

V&V Reference Report

L2 ASCDS Version : 8.4.3.1

Observation 58619 - L2 Version 2
Chandra X-Ray Center

L2 Processing Date : Apr 16 2012

Contents

1	Front	2
2	OBI	3
2.1	OBI	3
2.1.1	Images	3
2.1.2	Bias	3
2.1.3	Parameters	4
2.1.4	Events	4
2.2	Compared Parameters	5
2.3	Star Slots	6
2.4	FID Slots	6
A	Summary	7
A.1	Status	7
A.2	Comments	7

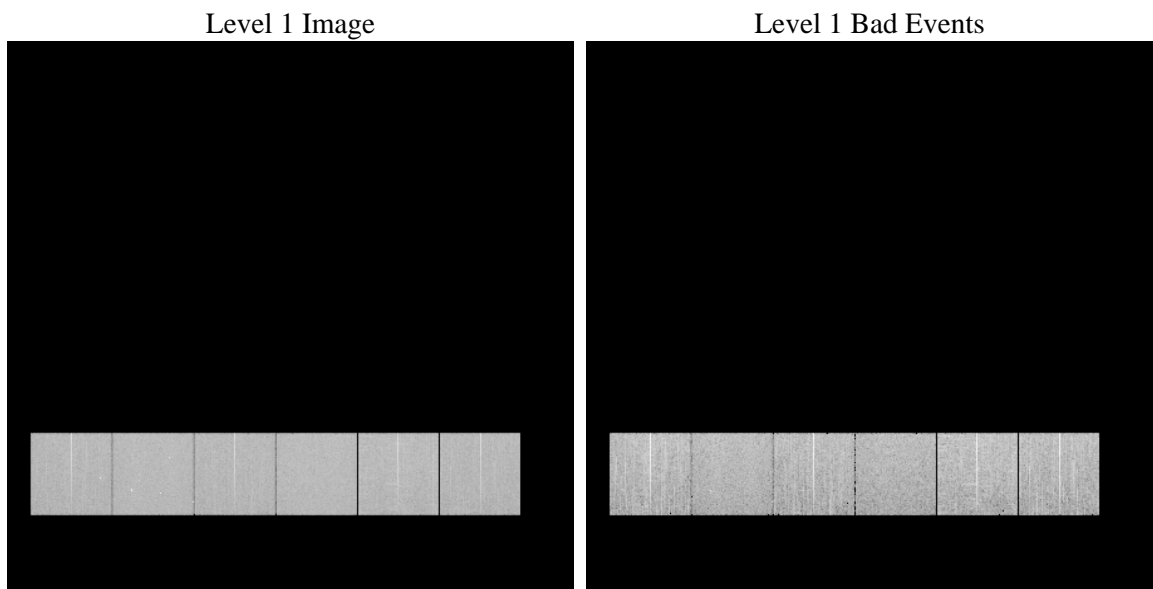
1 Front

seq_num	 	Sequence number
obs_id	58619	Observation id
title	ACIS-456789 diagnostics	Proposal title
observer	CHANDRA engineering request/realtime commanding	Principal investig
object	 	Source name
dtcycle	0	
cycle	P	events from which exps? Prim/Second/Both
ra_targ	0.0	Observer's specified target RA [deg]
dec_targ	0.0	Observer's specified target Dec [deg]
ra_nom	111.01463891312	Nominal RA [deg]
dec_nom	-1.9752598016821	Nominal Dec [deg]
roll_nom	26.444797201691	Nominal Roll [deg]
revision	2	Processing version of data
ontime	7247.9999730587	Sum of GTIs [s]
livetime	7156.2214331782	Livetime [s]
ontime4	7247.9999730587	Sum of GTIs [s]
ontime5	7247.9999730587	Sum of GTIs [s]
ontime6	7247.9999730587	Sum of GTIs [s]
ontime7	7247.9999730587	Sum of GTIs [s]
ontime8	7247.9999730587	Sum of GTIs [s]
ontime9	7247.9999730587	Sum of GTIs [s]
l2events	719601	Number of level 2 events

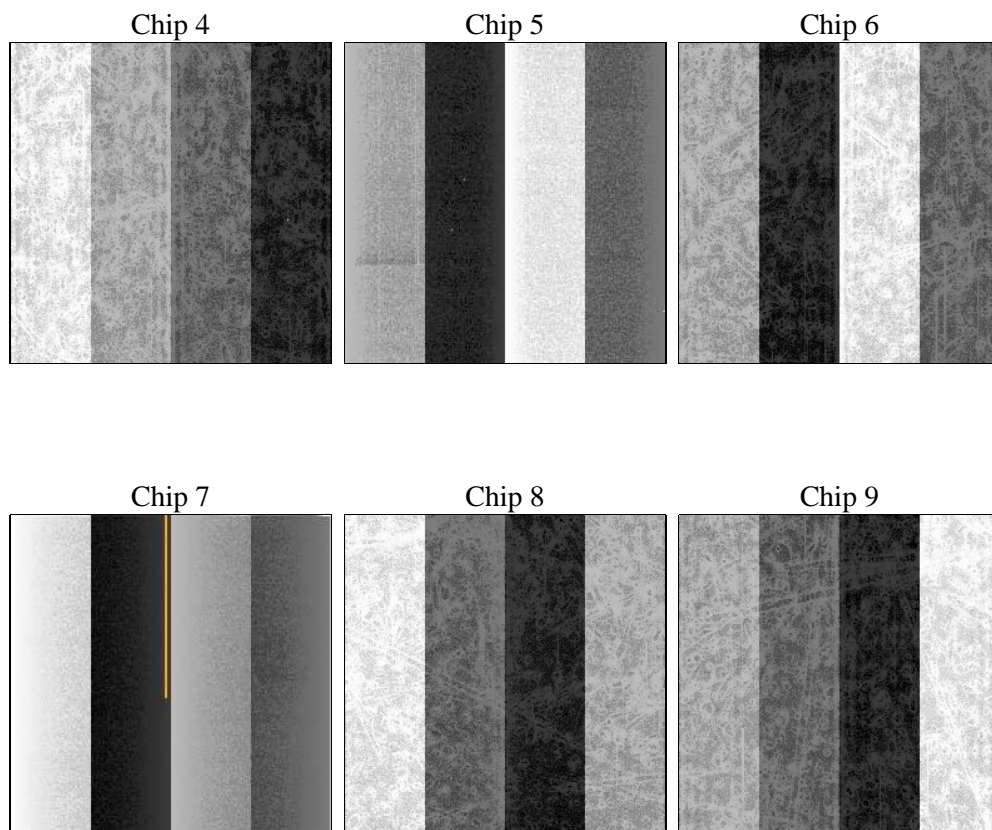
2 OBI

2.1 OBI

2.1.1 Images



2.1.2 Bias



2.1.3 Parameters

obi_num	0	Obi number	sched_exp_time	0.0	[s] Scheduled observation exposure time
ascdsver	8.4.3.1	Processing system revision	ontime	7247.9999730587	Sum of GTIs [s]
caldsver	4.4.9	 	ontime4	7247.9999730587	Sum of GTIs [s]
date	2012-04-16T07:42:32	Date and time of file creation	ontime5	7247.9999730587	Sum of GTIs [s]
revision	2	Processing version of data	ontime6	7247.9999730587	Sum of GTIs [s]
			ontime7	7247.9999730587	Sum of GTIs [s]
			ontime8	7247.9999730587	Sum of GTIs [s]
			ontime9	7247.9999730587	Sum of GTIs [s]
			l1events	1150357	Number of level 1 events

2.1.4 Events

	ccd 4	ccd 5	ccd 6	ccd 7	ccd 8	ccd 9		ccd 4	ccd 5	ccd 6	ccd 7	ccd 8	ccd 9
level 1 events	182928	195293	185356	200238	202880	183662	grade 0 events	66330	23576	66030	31982	69485	64480
rejected events	68429	58187	62713	53879	70419	65400		36%	12%	35%	15%	34%	35%
rejected %	37%	29%	33%	26%	34%	35%	grade 1 events	625	199	340	155	419	467
								0%	0%	0%	0%	0%	0%
							grade 2 events	17877	51458	21370	31990	23968	20146
								9%	26%	11%	15%	11%	10%
							grade 3 events	7879	6878	7797	14051	9151	7835
								4%	3%	4%	7%	4%	4%
							grade 4 events	7666	6698	7713	14149	8809	7806
								4%	3%	4%	7%	4%	4%
							grade 5 events	3471	8203	3705	9061	4706	4027
								1%	4%	1%	4%	2%	2%
							grade 6 events	14747	48496	19733	54187	21048	17995
								8%	24%	10%	27%	10%	9%
							grade 7 events	64333	49785	58668	44663	65294	60906
								35%	25%	31%	22%	32%	33%

2.2 Compared Parameters

Parameter	Planned	Actual	Parameter	Planned	Actual
Instrument	ACIS	ACIS	Obspar format version number	7	7
Detector	ACIS-456789	ACIS-456789	Obspar file type	PREDICTED	ACTUAL
Grating	NONE	NONE	Obspar update status	NONE	UPDATED
Data mode	FAINT	FAINT	On-chip summing requested	N	N
Observation mode	SECONDARY	SECONDARY	Subarray requested	NONE	NONE
[deg] Pointing RA	0	111.0146389131155	Alternating exposures requested	N	N
[deg] Pointing Dec	0	-1.975259801682052	[s] Primary exposure time	3.2	3.2
[deg] Pointing Roll	0.0	26.44479720169132			
[mm] SIM focus pos	-0.684267	-0.7809083437167272			
[mm] SIM defocus	0	0.7524282956875696			
[mm] SIM translation stage pos	-190.132523	250.4635187648994			
[mm] SIM translation stage offset	0	-0.007540371344731511			
[s] Observation start time (MET)	283741478.543024	283741477.51801			
Observation start date	2006-12-29T01:04:39	2006-12-29T01:04:37			
[s] Observation end time (MET)	283750926.993473	283750925.96845			
Observation end date	2006-12-29T03:42:07	2006-12-29T03:42:05			
Read mode	TIMED	TIMED			

2.3 Star Slots

2.4 FID Slots

A Summary

A.1 Status

V&V Scientist	Jen Lauer
V&V Date (YYYY-MM-DD)	2012.04.18
V&V Edition	1
V&V Disposition and Status	OK
V&V Charge Time	7.2479999730587

A.2 Comments