

# V&V Reference Report

## L2 ASCDS Version : 8.4.4

Observation 58359 - L2 Version 2  
Chandra X-Ray Center

L2 Processing Date : Apr 26 2012

## Contents

<b>1</b>	<b>Front</b>	<b>2</b>
<b>2</b>	<b>OBI</b>	<b>3</b>
2.1	OBI . . . . .	3
2.1.1	Images . . . . .	3
2.1.2	Bias . . . . .	3
2.1.3	Parameters . . . . .	4
2.1.4	Events . . . . .	4
2.2	Compared Parameters . . . . .	5
2.3	Star Slots . . . . .	6
2.4	FID Slots . . . . .	6
<b>A</b>	<b>Summary</b>	<b>7</b>
A.1	Status . . . . .	7
A.2	Comments . . . . .	7

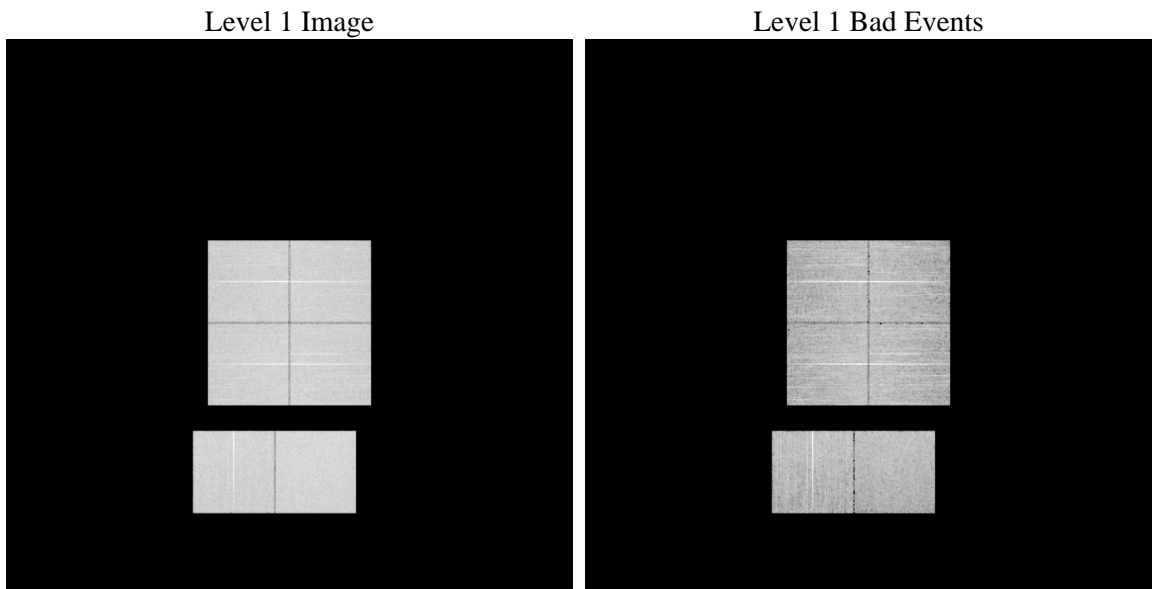
# 1 Front

seq_num	&#160	Sequence number
obs_id	58359	Observation id
title	ACIS-012367 diagnostics	Proposal title
observer	CHANDRA engineering request/realtime commanding	Principal investig
object	&#160	Source name
dtcycle	0	&#160
cycle	P	events from which exps? Prim/Second/Both
ra_targ	0.0	Observer's specified target RA [deg]
dec_targ	0.0	Observer's specified target Dec [deg]
ra_nom	272.02736016603	Nominal RA [deg]
dec_nom	-51.975099961584	Nominal Dec [deg]
roll_nom	18.878348946971	Nominal Roll [deg]
revision	2	Processing version of data
ontime	8271.999969244	Sum of GTIs [s]
livetime	8167.254924833	Livetime [s]
ontime0	8271.999969244	Sum of GTIs [s]
ontime1	8271.999969244	Sum of GTIs [s]
ontime2	8271.999969244	Sum of GTIs [s]
ontime3	8271.999969244	Sum of GTIs [s]
ontime6	8271.999969244	Sum of GTIs [s]
ontime7	8271.999969244	Sum of GTIs [s]
l2events	724942	Number of level 2 events

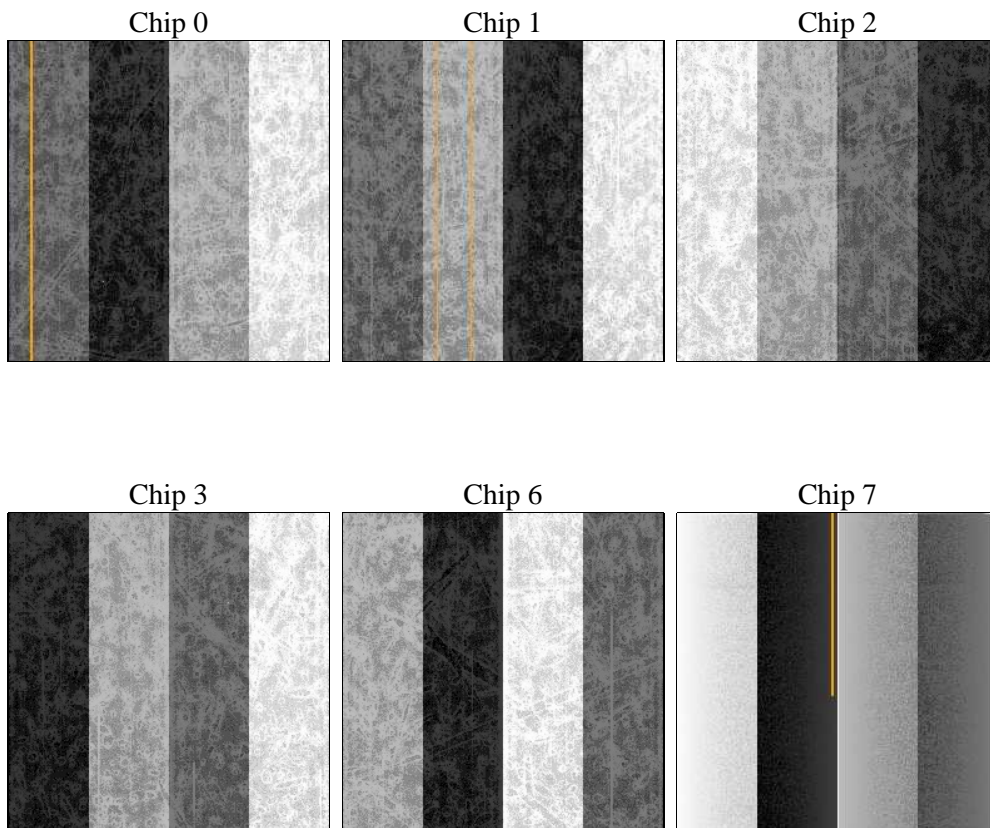
## 2 OBI

### 2.1 OBI

#### 2.1.1 Images



#### 2.1.2 Bias



### 2.1.3 Parameters

obi_num	0	Obi number	sched_exp_time	0.0	[s] Scheduled observation exposure time
ascdsver	8.4.4	Processing system revision	ontime	8271.999969244	Sum of GTIs [s]
caldsver	4.4.9	&#160	ontime0	8271.999969244	Sum of GTIs [s]
date	2012-04-26T12:50:26	Date and time of file creation	ontime1	8271.999969244	Sum of GTIs [s]
revision	2	Processing version of data	ontime2	8271.999969244	Sum of GTIs [s]
			ontime3	8271.999969244	Sum of GTIs [s]
			ontime6	8271.999969244	Sum of GTIs [s]
			ontime7	8271.999969244	Sum of GTIs [s]
			l1events	1199834	Number of level 1 events

### 2.1.4 Events

	ccd 0	ccd 1	ccd 2	ccd 3	ccd 6	ccd 7		ccd 0	ccd 1	ccd 2	ccd 3	ccd 6	ccd 7
level 1 events	191735	190978	197104	197449	201345	221223	grade 0 events	65659	64687	67047	67343	66920	32104
rejected events	71406	70043	76519	75772	75712	66229		34%	33%	34%	34%	33%	14%
rejected %	37%	36%	38%	38%	37%	29%	grade 1 events	450	369	541	519	418	164
								0%	0%	0%	0%	0%	0%
							grade 2 events	21233	22258	20149	20976	22212	33846
								11%	11%	10%	10%	11%	15%
							grade 3 events	8022	7687	8050	8114	7902	14900
								4%	4%	4%	4%	3%	6%
							grade 4 events	7807	7712	8158	8027	7867	14442
								4%	4%	4%	4%	3%	6%
							grade 5 events	3929	4140	3792	4336	4113	10819
								2%	2%	1%	2%	2%	4%
							grade 6 events	17608	18624	17227	17217	20792	59702
								9%	9%	8%	8%	10%	26%
							grade 7 events	67027	65501	72140	70917	71121	55246
								34%	34%	36%	35%	35%	24%

## 2.2 Compared Parameters

Parameter	Planned	Actual	Parameter	Planned	Actual
Instrument	ACIS	ACIS	Obspar format version number	7	7
Detector	ACIS-012367	ACIS-012367	Obspar file type	PREDICTED	ACTUAL
Grating	NONE	NONE	Obspar update status	NONE	UPDATED
Data mode	FAINT	FAINT	On-chip summing requested	N	N
Observation mode	SECONDARY	SECONDARY	Subarray requested	NONE	NONE
[deg] Pointing RA	0	272.027360166031	Alternating exposures requested	N	N
[deg] Pointing Dec	0	-51.97509996158389	[s] Primary exposure time	3.2	3.2
[deg] Pointing Roll	0.0	18.87834894697067			
[mm] SIM focus pos	-0.782348	-0.6828225247311905			
[mm] SIM defocus	0	0.8505141146731063			
[mm] SIM translation stage pos	-233.592463	250.466033080201			
[mm] SIM translation stage offset	0	-0.01005468664627074			
[s] Observation start time (MET)	298176697.730033	298176696.70503			
Observation start date	2007-06-14T02:51:38	2007-06-14T02:51:36			
[s] Observation end time (MET)	298200338.331164	298200337.30616			
Observation end date	2007-06-14T09:25:38	2007-06-14T09:25:37			
Read mode	TIMED	TIMED			

## 2.3 Star Slots

## 2.4 FID Slots

## A Summary

### A.1 Status

V&V Scientist	Jen Lauer
V&V Date (YYYY-MM-DD)	2012.04.26
V&V Edition	1
V&V Disposition and Status	OK
V&V Charge Time	8.271999969244

### A.2 Comments