

V&V Reference Report

L2 ASCDS Version : 8.4.4

Observation 57889 - L2 Version 2
Chandra X-Ray Center

L2 Processing Date : May 12 2012

Contents

1	Front	2
2	OBI	3
2.1	OBI	3
2.1.1	Images	3
2.1.2	Bias	3
2.1.3	Parameters	4
2.1.4	Events	4
2.2	Compared Parameters	5
2.3	Star Slots	6
2.4	FID Slots	6
A	Summary	7
A.1	Status	7
A.2	Comments	7

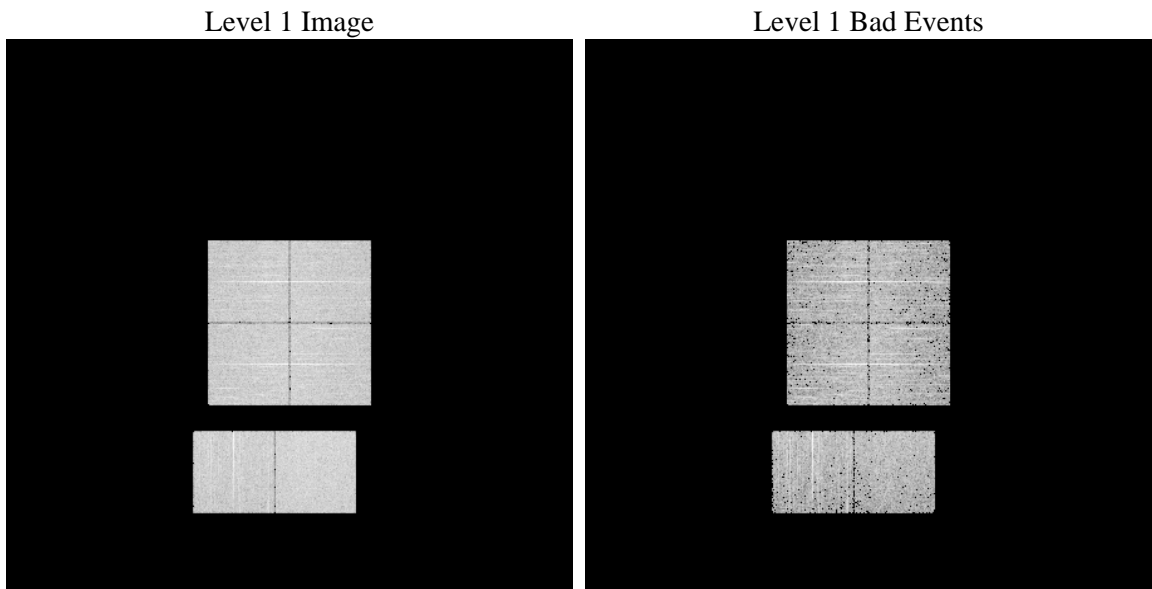
1 Front

seq_num	 	Sequence number
obs_id	57889	Observation id
title	ACIS-012367 diagnostics	Proposal title
observer	CHANDRA engineering request/realtime commanding	Principal investig
object	 	Source name
dtcycle	0	
cycle	P	events from which exps? Prim/Second/Both
ra_targ	0.0	Observer's specified target RA [deg]
dec_targ	0.0	Observer's specified target Dec [deg]
ra_nom	201.97005427259	Nominal RA [deg]
dec_nom	18.995374655473	Nominal Dec [deg]
roll_nom	156.28163638555	Nominal Roll [deg]
revision	2	Processing version of data
ontime	3054.6578580141	Sum of GTIs [s]
livetime	3015.9779409218	Livetime [s]
ontime0	3054.6168180108	Sum of GTIs [s]
ontime1	3054.5757780075	Sum of GTIs [s]
ontime2	3054.5347380042	Sum of GTIs [s]
ontime3	3054.6988980174	Sum of GTIs [s]
ontime6	3054.4936980009	Sum of GTIs [s]
ontime7	3054.6578580141	Sum of GTIs [s]
l2events	225631	Number of level 2 events

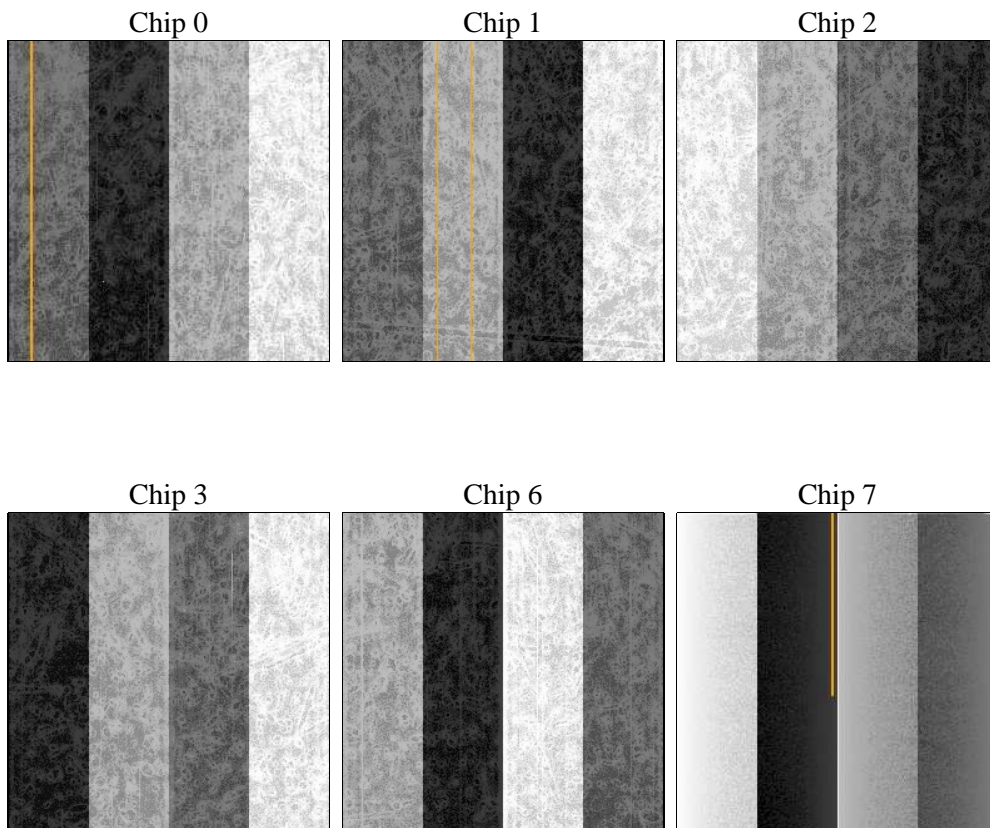
2 OBI

2.1 OBI

2.1.1 Images



2.1.2 Bias



2.1.3 Parameters

obi_num	0	Obi number	sched_exp_time	0.0	[s] Scheduled observation exposure time
ascdsver	8.4.4	Processing system revision	ontime	3054.6578580141	Sum of GTIs [s]
caldsver	4.4.9	 	ontime0	3054.6168180108	Sum of GTIs [s]
date	2012-05-12T13:42:39	Date and time of file creation	ontime1	3054.5757780075	Sum of GTIs [s]
revision	2	Processing version of data	ontime2	3054.5347380042	Sum of GTIs [s]
			ontime3	3054.6988980174	Sum of GTIs [s]
			ontime6	3054.4936980009	Sum of GTIs [s]
			ontime7	3054.6578580141	Sum of GTIs [s]
			l1events	394810	Number of level 1 events

2.1.4 Events

	ccd 0	ccd 1	ccd 2	ccd 3	ccd 6	ccd 7		ccd 0	ccd 1	ccd 2	ccd 3	ccd 6	ccd 7
level 1 events	63023	61781	64973	64636	66043	74354	grade 0 events	20112	20168	20421	20674	20433	10029
rejected events	26012	24298	27708	27235	27446	24323		31%	32%	31%	31%	30%	13%
rejected %	41%	39%	42%	42%	41%	32%	grade 1 events	136	132	148	165	118	58
								0%	0%	0%	0%	0%	0%
							grade 2 events	6741	6829	6425	6442	6886	11059
								10%	11%	9%	9%	10%	14%
							grade 3 events	2386	2427	2563	2506	2491	4740
								3%	3%	3%	3%	3%	6%
							grade 4 events	2415	2408	2547	2545	2538	4766
								3%	3%	3%	3%	3%	6%
							grade 5 events	1516	1511	1395	1667	1593	4011
								2%	2%	2%	2%	2%	5%
							grade 6 events	5391	5687	5348	5234	6291	19437
								8%	9%	8%	8%	9%	26%
							grade 7 events	24326	22619	26126	25403	25693	20254
								38%	36%	40%	39%	38%	27%

2.2 Compared Parameters

Parameter	Planned	Actual	Parameter	Planned	Actual
Instrument	ACIS	ACIS	Obspar format version number	7	7
Detector	ACIS-012367	ACIS-012367	Obspar file type	PREDICTED	ACTUAL
Grating	NONE	NONE	Obspar update status	NONE	UPDATED
Data mode	FAINT	FAINT	On-chip summing requested	N	N
Observation mode	SECONDARY	SECONDARY	Subarray requested	NONE	NONE
[deg] Pointing RA	0	201.9700542725851	Alternating exposures requested	N	N
[deg] Pointing Dec	0	18.99537465547312	[s] Primary exposure time	3.2	3.2
[deg] Pointing Roll	0.0	156.2816363855459			
[mm] SIM focus pos	-1.429586	-0.7809083437167272			
[mm] SIM defocus	0.1037507710433287	0.7524282956875696			
[mm] SIM translation stage pos	250.455976	250.466033080201			
[mm] SIM translation stage offset	0	-0.01005468664627074			
[s] Observation start time (MET)	323502300.552262	323502299.52726			
Observation start date	2008-04-02T05:45:01	2008-04-02T05:44:59			
[s] Observation end time (MET)	323513948.652829	323513947.62783			
Observation end date	2008-04-02T08:59:09	2008-04-02T08:59:07			
Read mode	TIMED	TIMED			

2.3 Star Slots

2.4 FID Slots

A Summary

A.1 Status

V&V Scientist	Jen Lauer
V&V Date (YYYY-MM-DD)	2012.05.14
V&V Edition	1
V&V Disposition and Status	OK
V&V Charge Time	3.0546578580141

A.2 Comments