

# V&V Reference Report

## L2 ASCDS Version : 7.6.7.1

Observation 5679 - L2 Version 001  
Chandra X-Ray Center

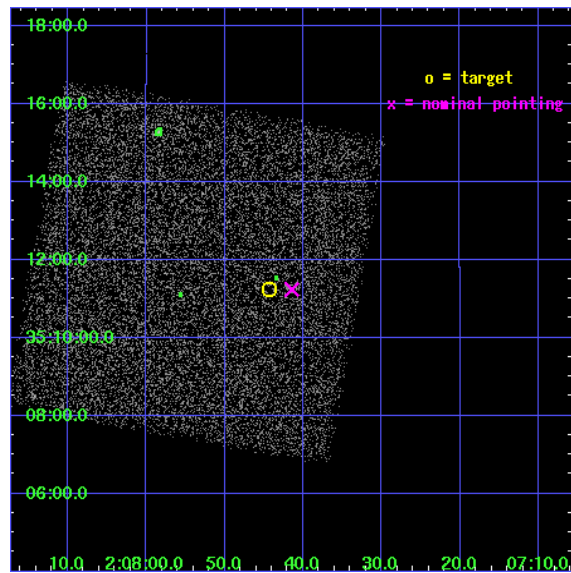
L2 Processing Date : Apr 13 2006

## Contents

<b>1</b>	<b>Front</b>	<b>2</b>
<b>2</b>	<b>OBI</b>	<b>3</b>
2.1	OBI . . . . .	3
2.1.1	Images . . . . .	3
2.1.2	Bias . . . . .	3
2.1.3	Parameters . . . . .	4
2.1.4	Events . . . . .	4
2.2	Compared Parameters . . . . .	5
2.3	Aspect . . . . .	6
2.4	Star Slots . . . . .	9
2.4.1	Slot 3 . . . . .	9
2.4.2	Slot 4 . . . . .	10
2.4.3	Slot 5 . . . . .	11
2.4.4	Slot 6 . . . . .	12
2.4.5	Slot 7 . . . . .	13
2.5	FID Slots . . . . .	14
2.5.1	Slot 0 . . . . .	14
2.5.2	Slot 1 . . . . .	15
2.5.3	Slot 2 . . . . .	16
<b>3</b>	<b>Point Sources</b>	<b>17</b>
<b>A</b>	<b>Summary</b>	<b>18</b>
A.1	Status . . . . .	18
A.2	Comments . . . . .	18

# 1 Front

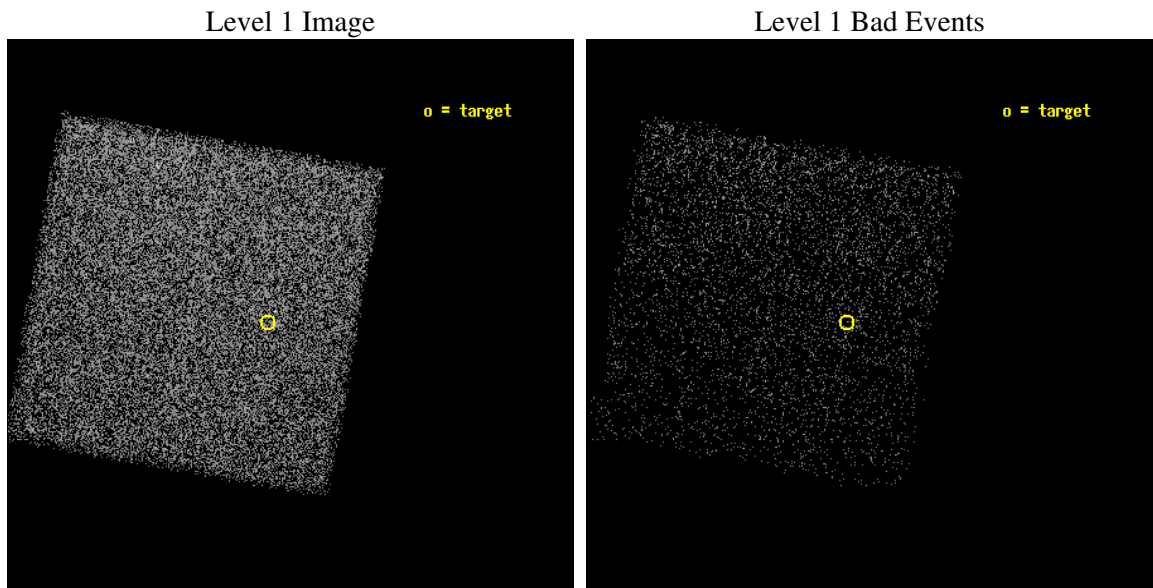
seq_num	701102
obs_id	5679
title	Bringing in the Last SHEEP
observer	Professor Kirpal Nandra
object	AX J0207.7+3511
dtcycle	0
cycle	P
ra_targ	31.934583
dec_targ	35.187222
ra_nom	31.922724411889
dec_nom	35.187266316457
roll_nom	189.97772514676
revision	2
ontime	5187.1999806762
livetime	5121.516531164
ontime7	5187.1999806762
l2events	20396



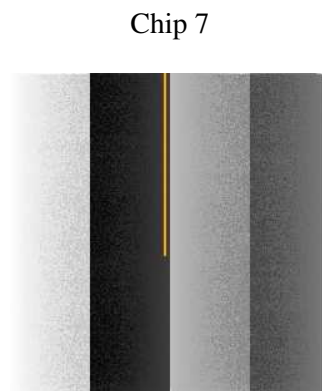
## 2 OBI

### 2.1 OBI

#### 2.1.1 Images



#### 2.1.2 Bias



### 2.1.3 Parameters

obi_num	0
ascdsver	7.6.7.1
caldbver	3.2.1
date	2006-04-13T11:49:37
revision	2

sched_exp_time	5000.000000
ontime	5218.0227140188
ontime7	5218.0227140188
l1events	53701

### 2.1.4 Events

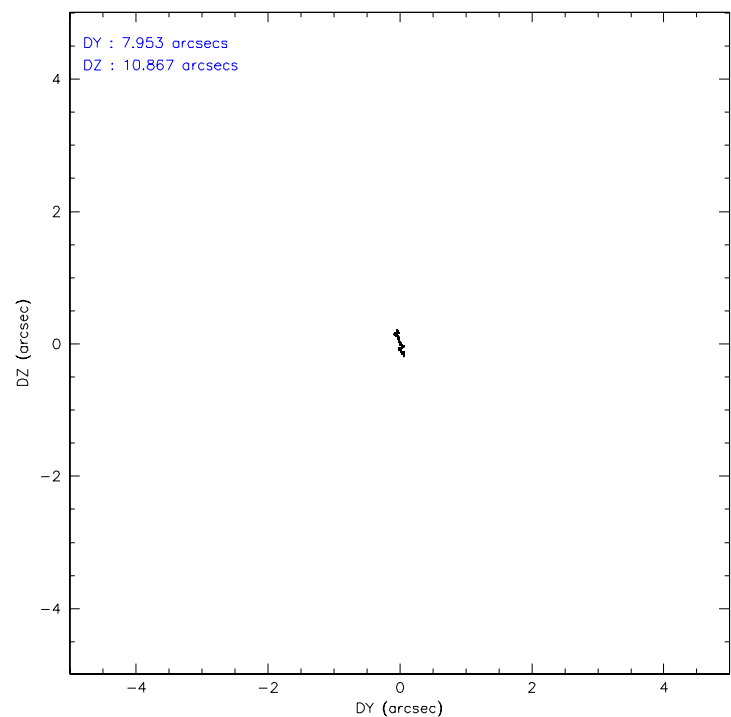
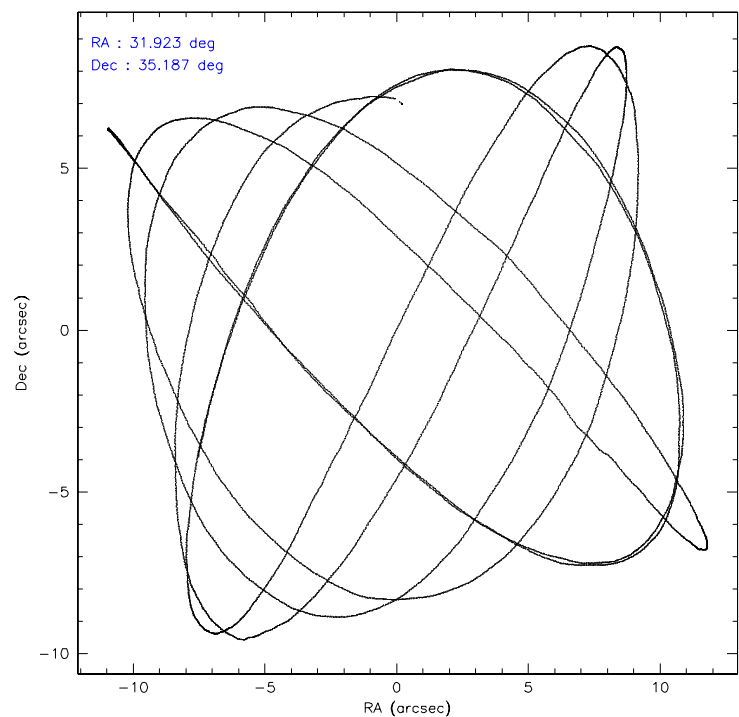
	<b>ccd 7</b>
level 1 events	53701
rejected events	32823
rejected %	61%

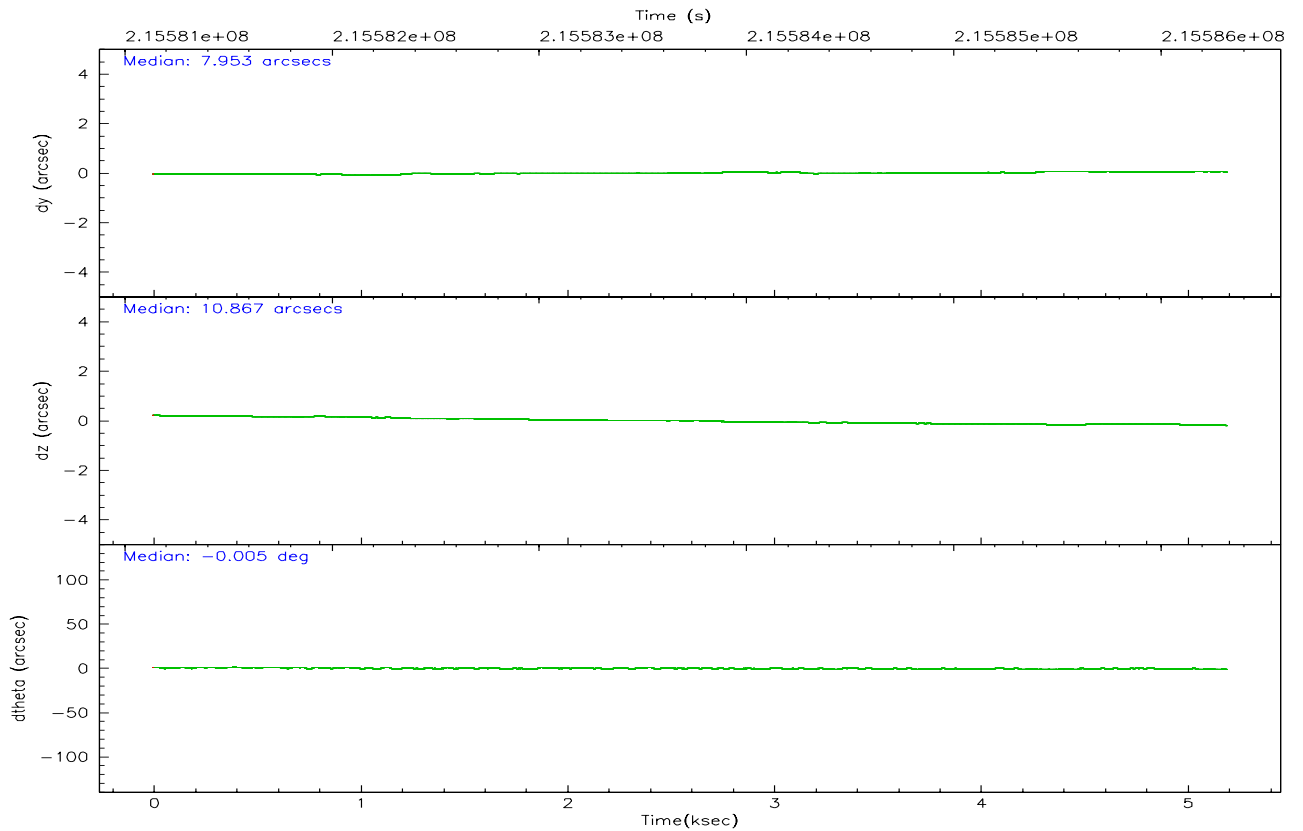
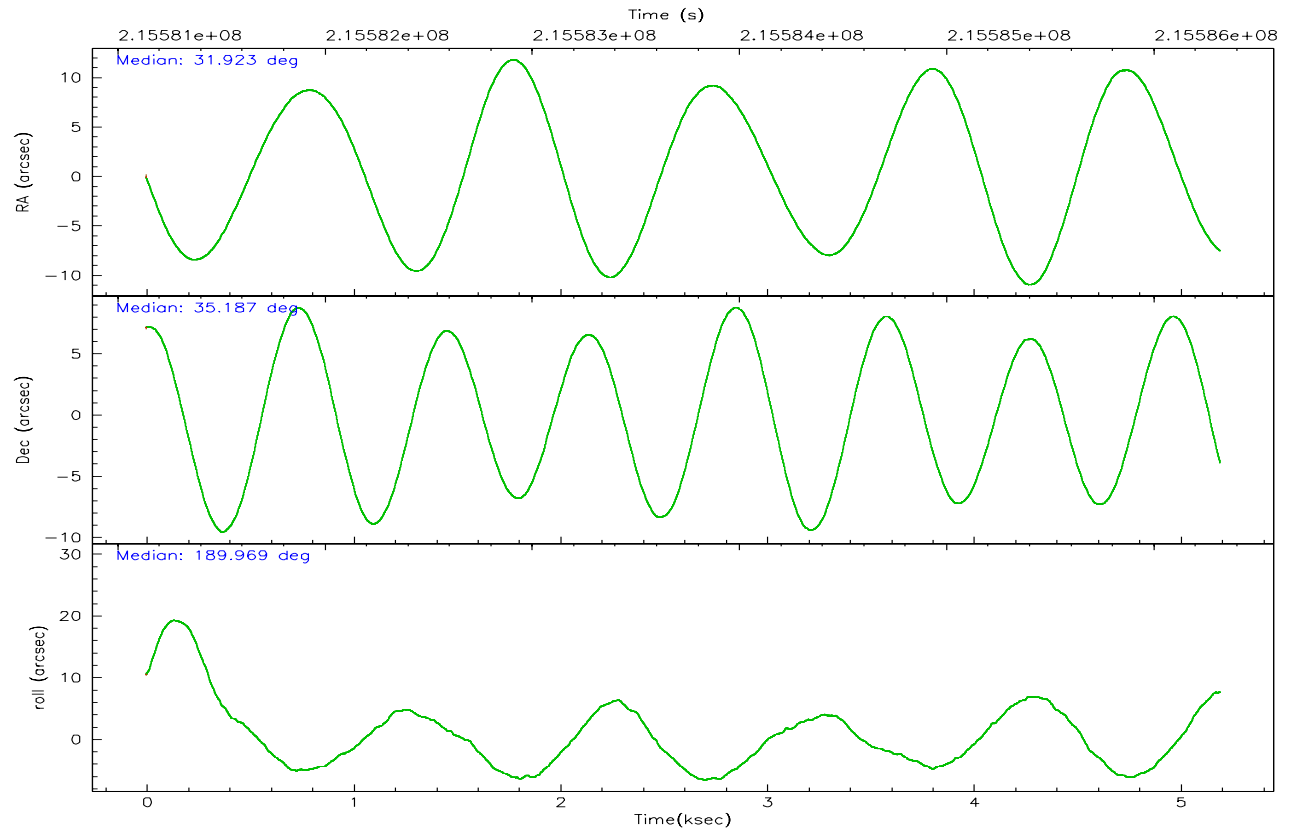
	<b>ccd 7</b>
grade 0 events	1185
	2%
grade 1 events	35
	0%
grade 2 events	5180
	9%
grade 3 events	1117
	2%
grade 4 events	1064
	1%
grade 5 events	3628
	6%
grade 6 events	12439
	23%
grade 7 events	29053
	54%

## 2.2 Compared Parameters

Parameter	Planned	Actual	Parameter	Planned	Actual
Instrument	ACIS	ACIS	Obspar format version number	6	6
Detector	ACIS-7	ACIS-7	Obspar file type	PREDICTED	ACTUAL
Grating	NONE	NONE	Obspar update status	NONE	UPDATED
Data mode	FAINT	FAINT	On-chip summing requested	N	N
Observation mode	POINTING	POINTING	Subarray requested	NONE	NONE
Pointing RA	31.948000	31.92272441188941	Alternating exposures requested	N	N
Pointing Dec	35.205024	35.18726631645745	Primary exposure time	0.000000	3.2
Pointing Roll	189.806533	189.977725146764			
SIM focus pos (mm)	-0.684267	-0.6828225247311905			
SIM defocus (mm)	0	0.001444936568705701			
SIM translation stage pos (mm)	-190.132523	-190.1425803651734			
SIM translation stage offset (mm)	0	0.01005778216563158			
Observation start time	215581324.184000	215580557.48431			
Observation start date	2004-10-31T03:41:00	2004-10-31T03:29:17			
Observation end time	215586324.184000	215587257.39711			
Observation end date	2004-10-31T05:04:20	2004-10-31T05:20:57			
Read mode	TIMED	TIMED			

2.3 Aspect





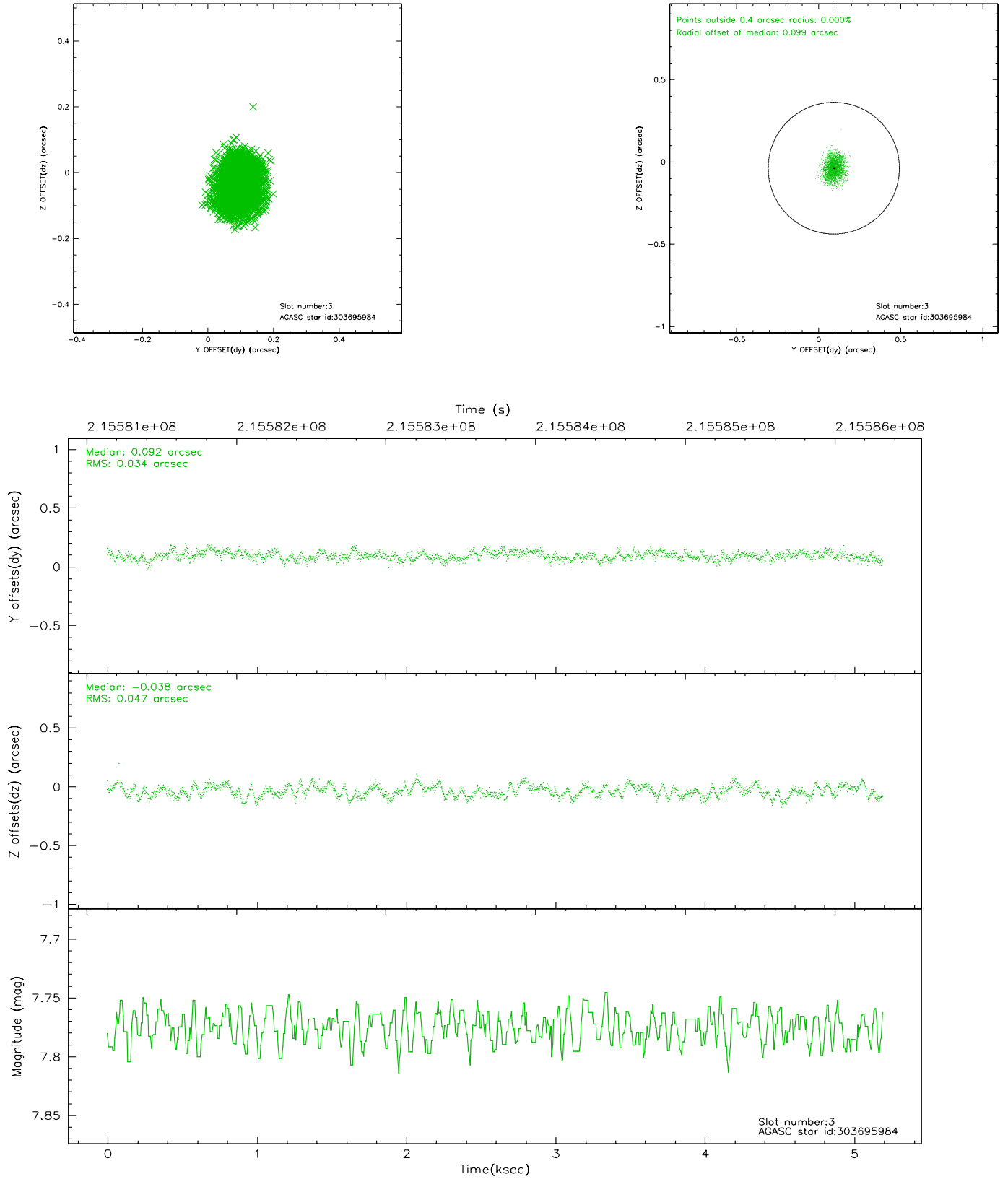
### Slot Statistics

slot	status	id	mag	n_pts	med_dy	med_dz	dr1	dr2	ra	dec	mean_y	mean_z
0	FID	ACIS-S-2	7.10	1267	-0.024	0.017	0.007	0.011	0.000000	0.000000	-760.72	-1732.08
1	FID	ACIS-S-4	7.20	1268	0.044	0.007	0.006	0.012	0.000000	0.000000	2152.06	175.24
2	FID	ACIS-S-5	7.23	1268	-0.052	-0.015	0.006	0.010	0.000000	0.000000	-1812.13	170.14
3	GUIDE	303695984	7.77	2535	0.092	-0.038	0.063	0.098	31.969880	35.553798	-276.39	-1226.00
4	GUIDE	303696240	8.92	2534	-0.106	-0.123	0.080	0.134	32.023028	34.662023	113.64	1963.87
5	GUIDE	303699752	8.82	2533	-0.035	-0.081	0.085	0.130	32.072348	34.656977	-27.01	2007.65
6	GUIDE	303703232	9.24	2534	0.037	0.044	0.088	0.141	31.752004	35.362378	469.78	-655.00
7	GUIDE	303695928	9.74	2534	0.017	0.200	0.124	0.201	32.699358	35.484209	-2342.53	-623.56

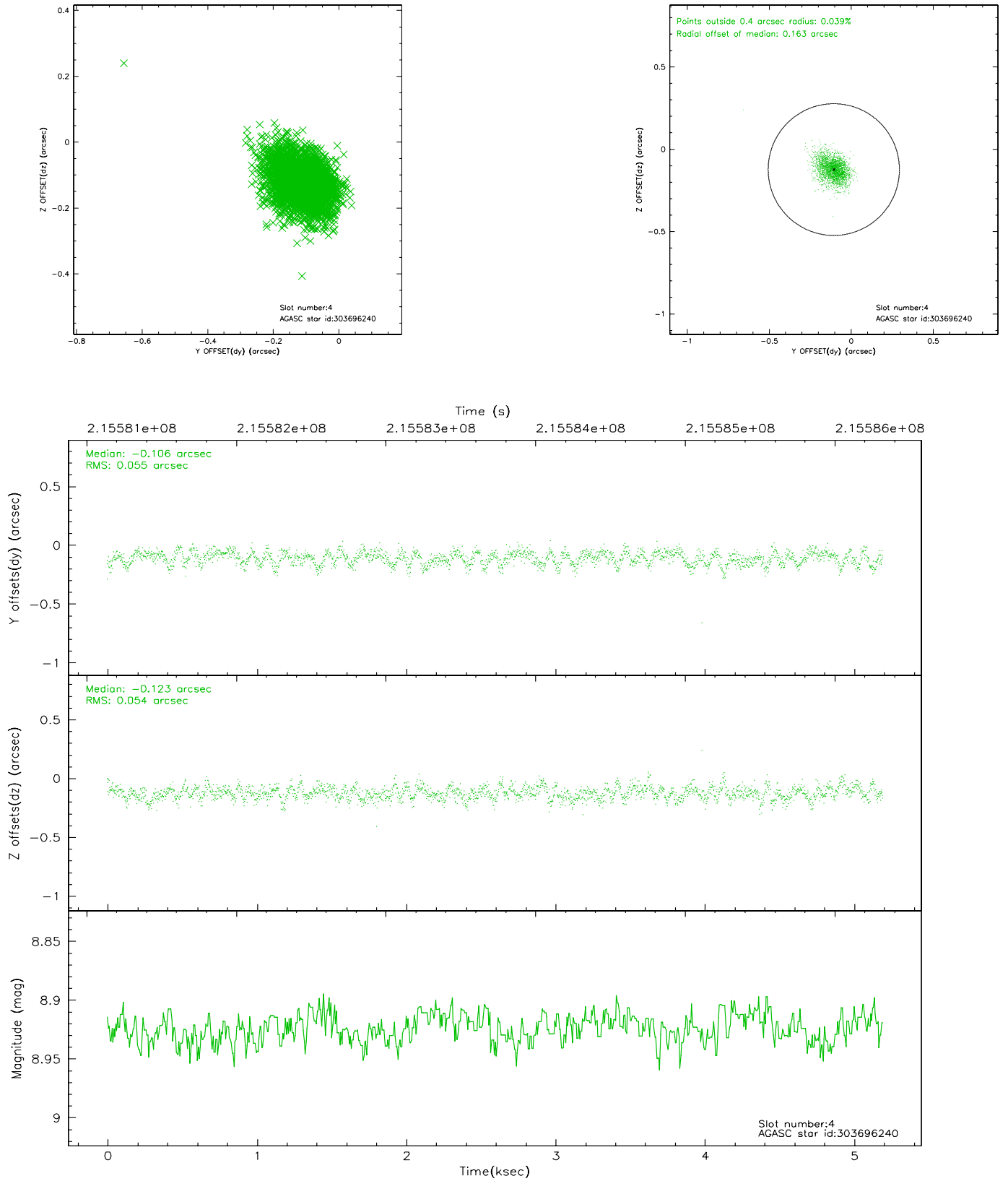


## 2.4 Star Slots

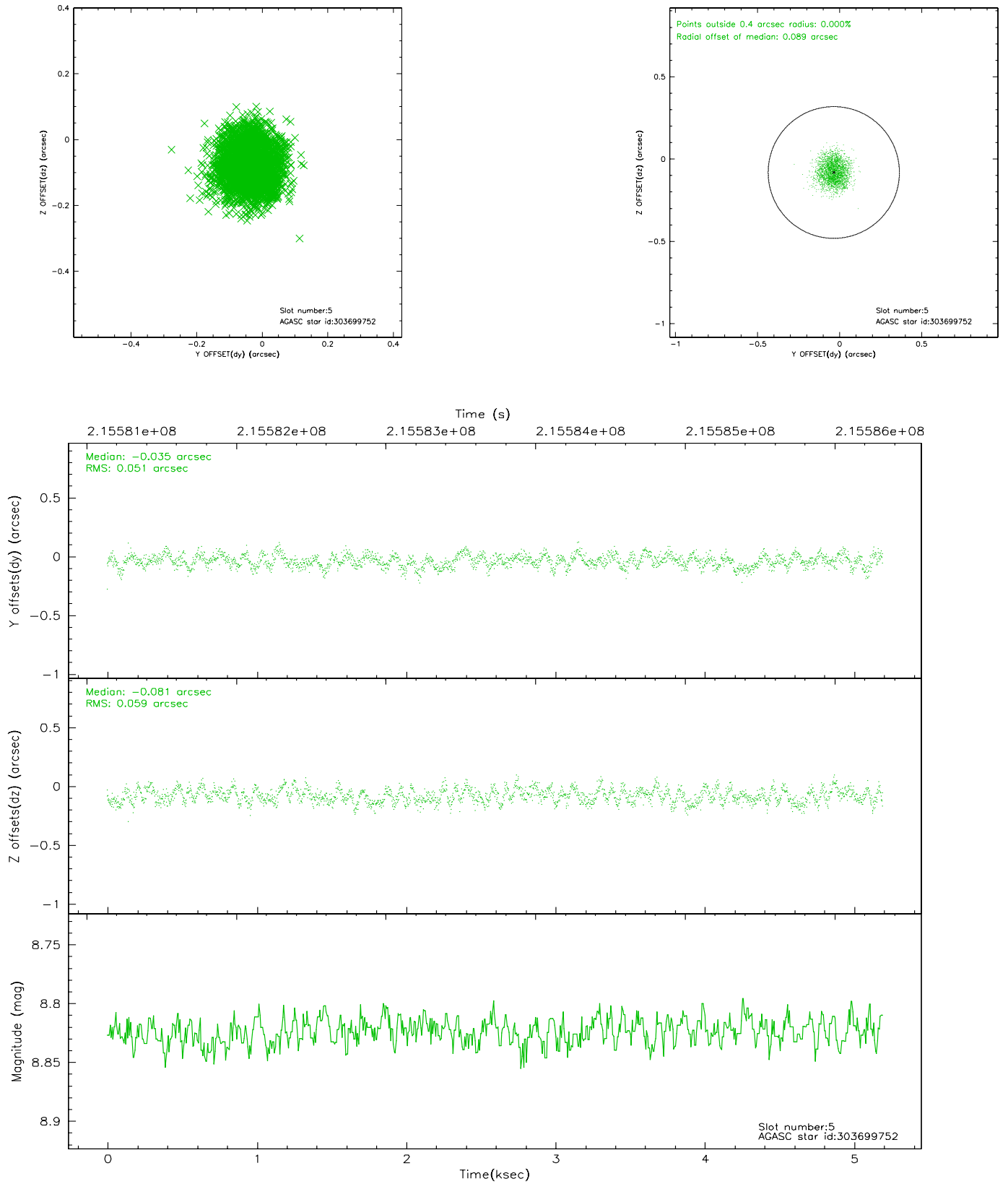
### 2.4.1 Slot 3



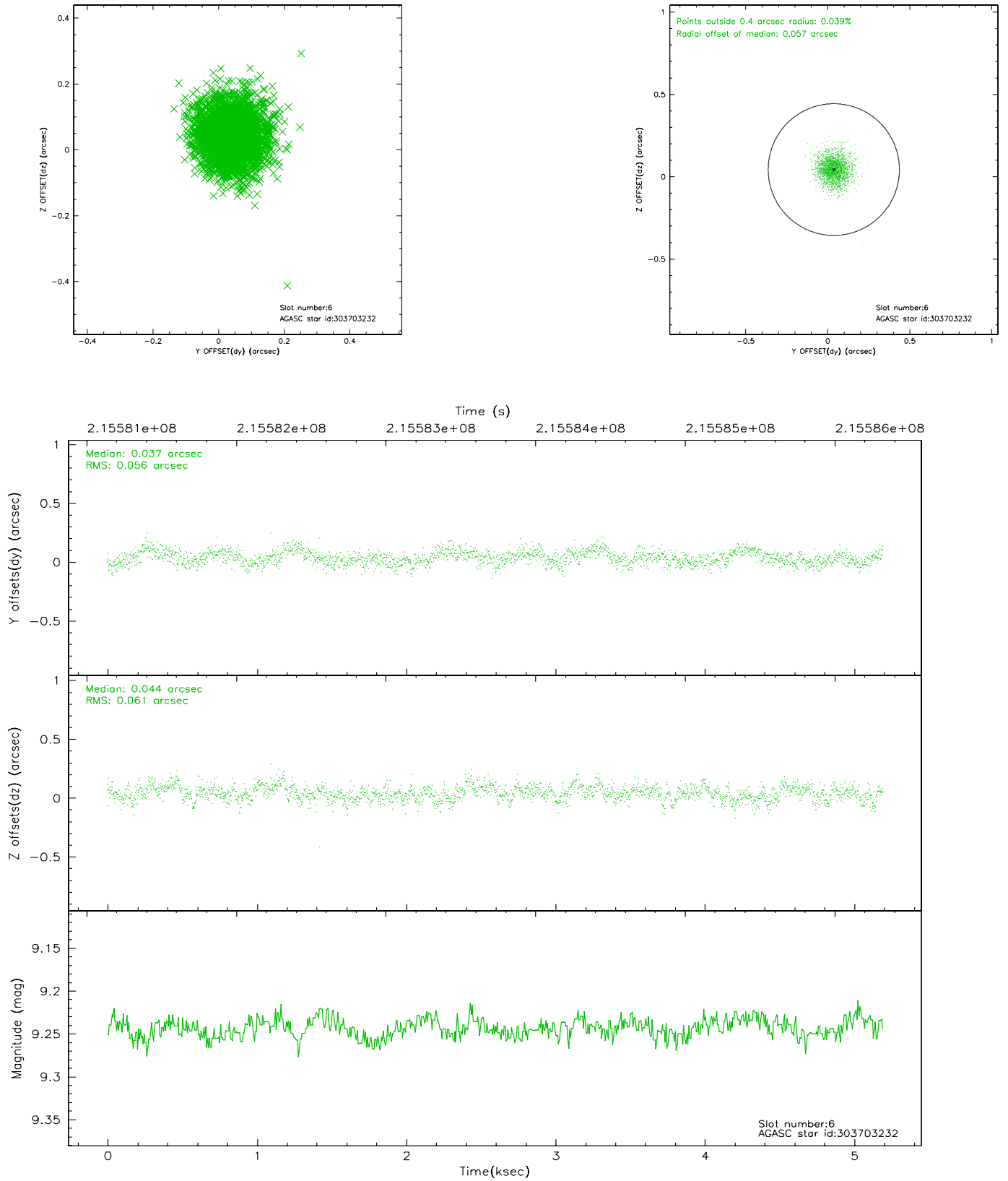
## 2.4.2 Slot 4



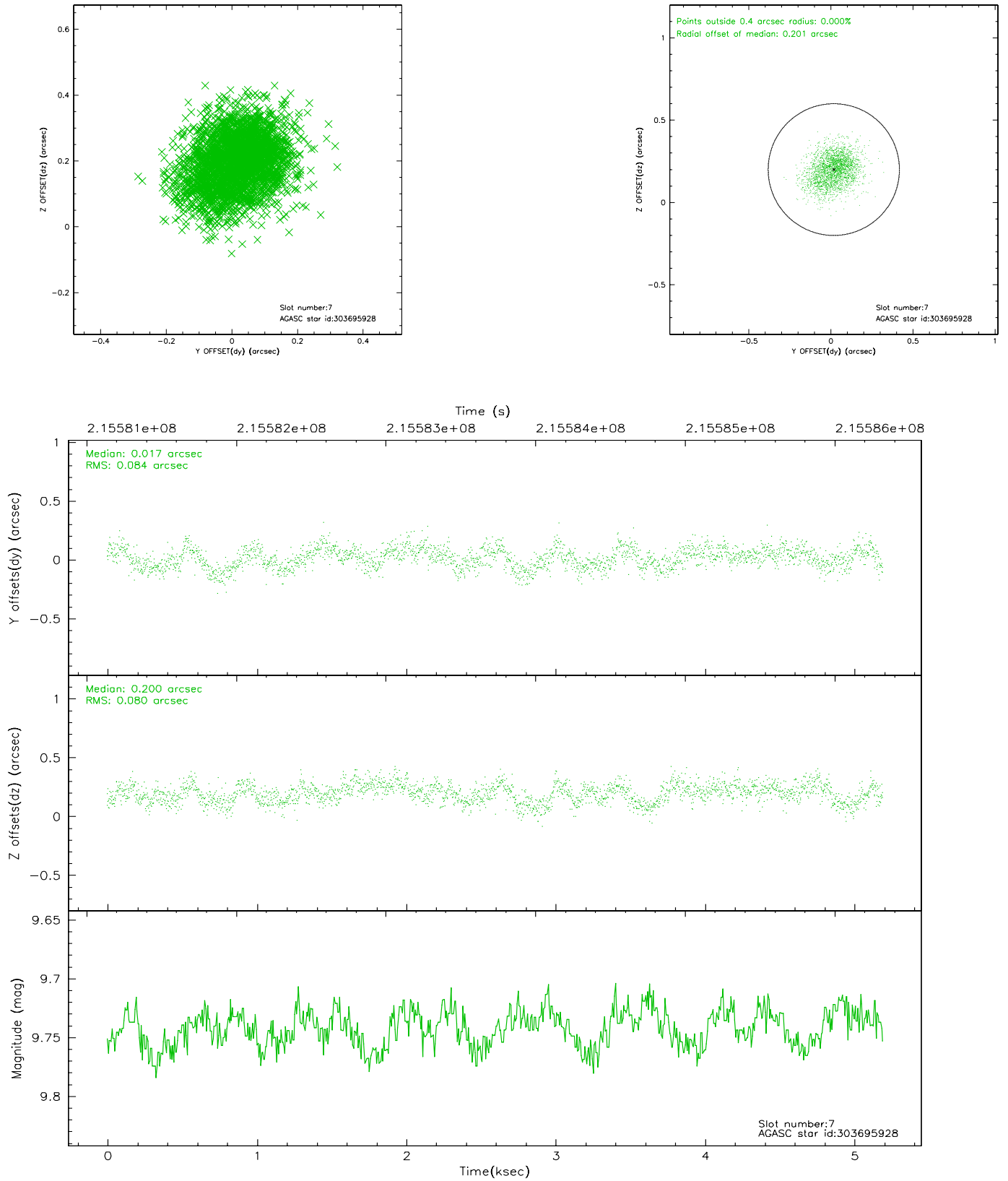
### 2.4.3 Slot 5



## 2.4.4 Slot 6

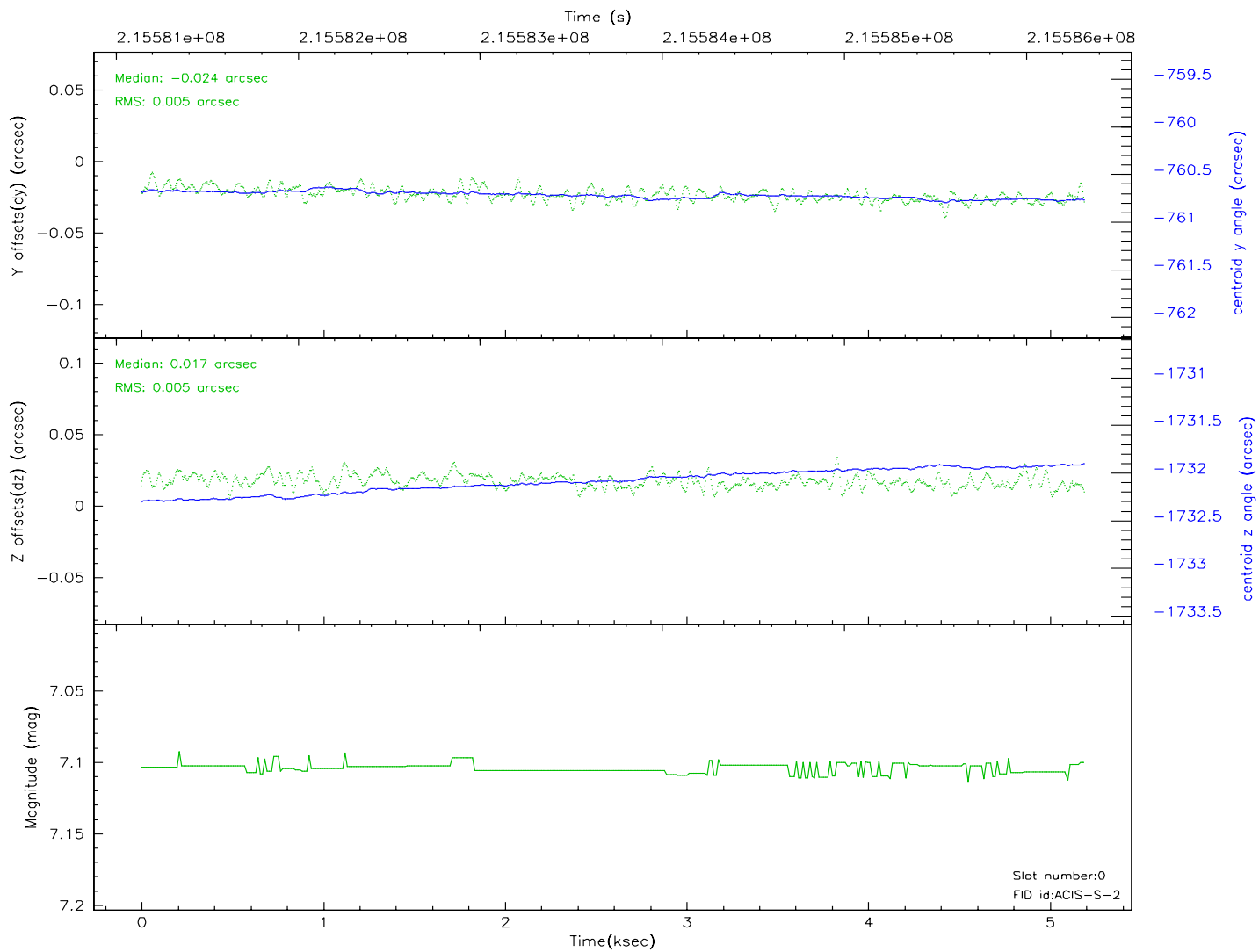
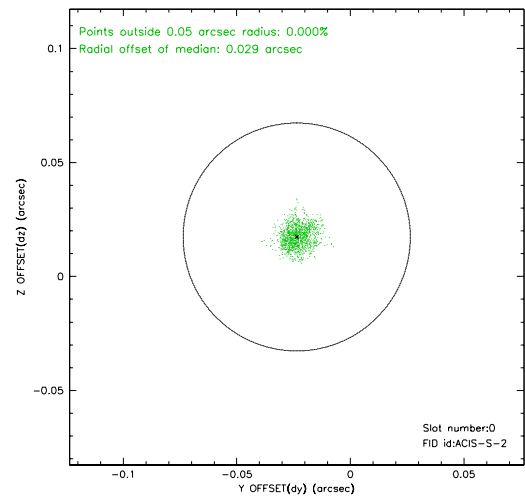
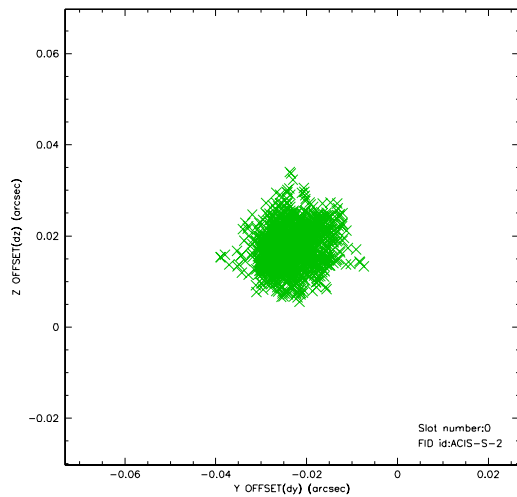


## 2.4.5 Slot 7

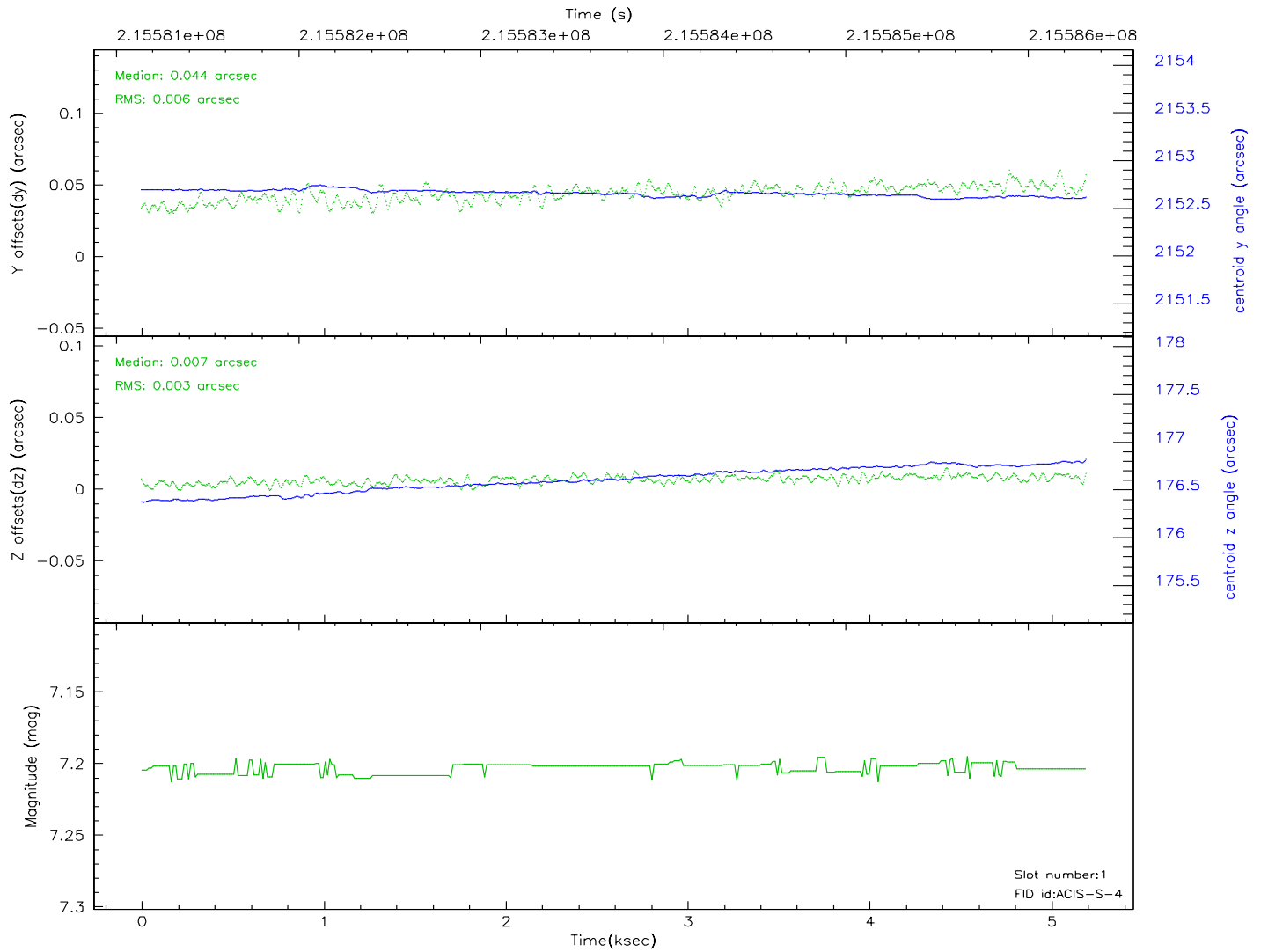
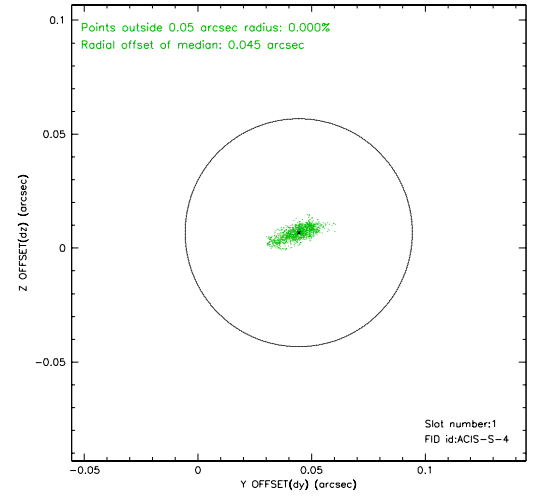
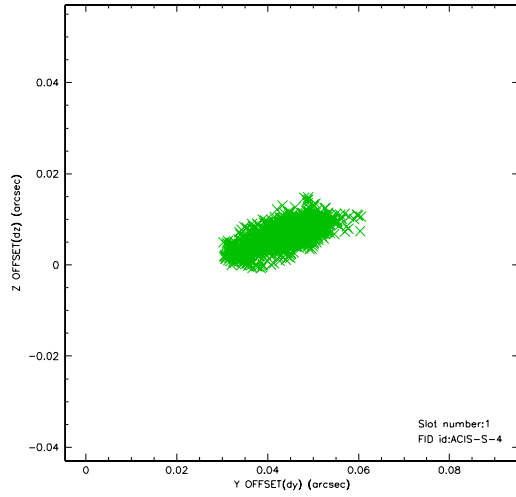


## 2.5 FID Slots

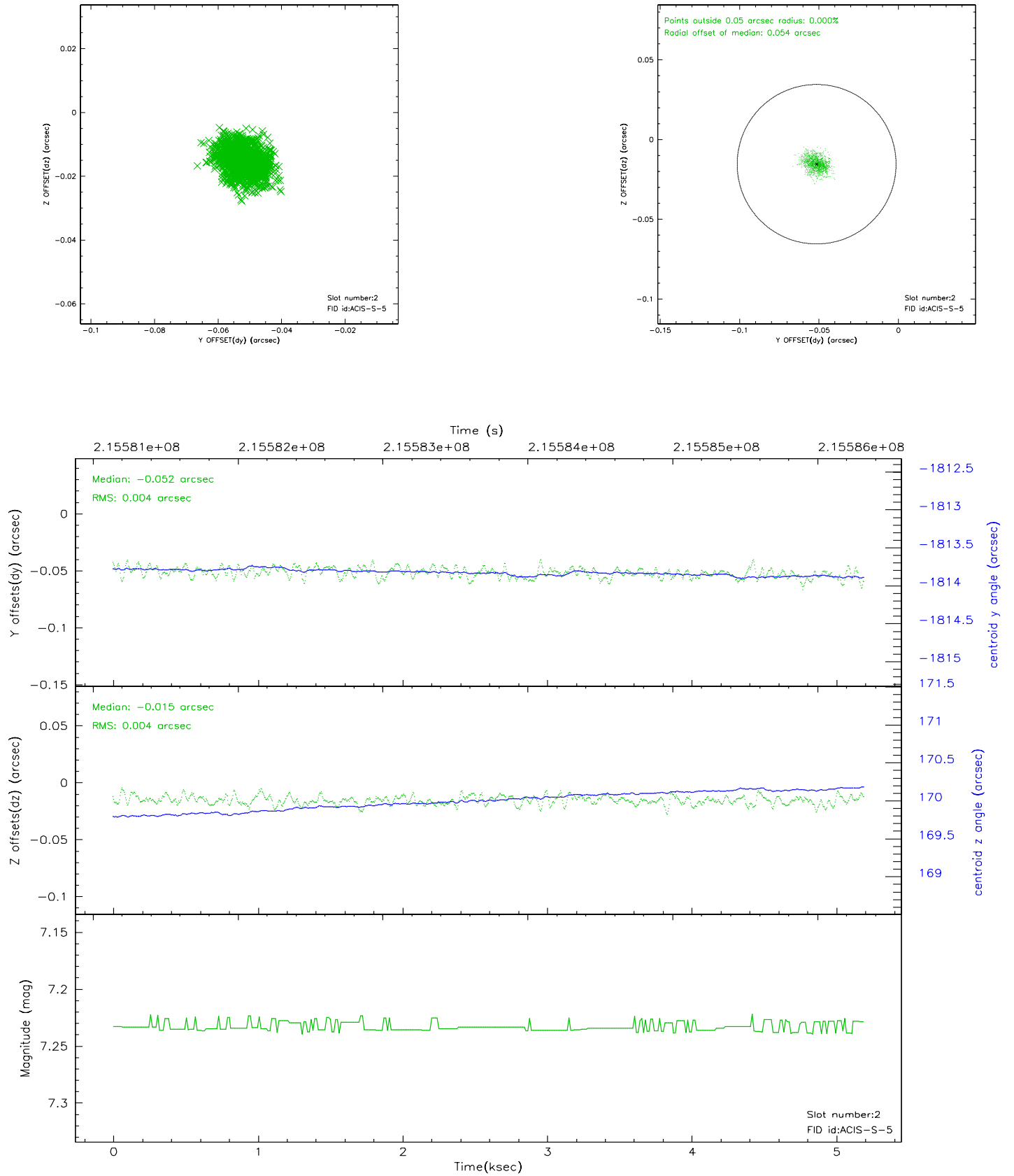
### 2.5.1 Slot 0



## 2.5.2 Slot 1

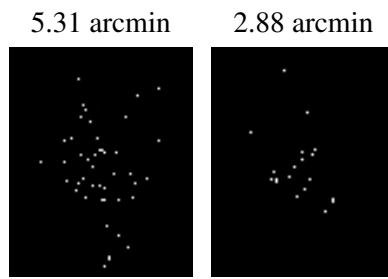


### 2.5.3 Slot 2





### 3 Point Sources



## A Summary

### A.1 Status

V&V Scientist	Beth Sundheim
V&V Date (YYYY-MM-DD)	2006.04.13
V&V Edition	1
V&V Disposition and Status	OK
V&V Charge Time	5.187

### A.2 Comments