

# V&V Reference Report

## L2 ASCDS Version : 8.4.5

Observation 56699 - L2 Version 2  
Chandra X-Ray Center

L2 Processing Date : Jun 16 2012

## Contents

<b>1</b>	<b>Front</b>	<b>2</b>
<b>2</b>	<b>OBI</b>	<b>3</b>
2.1	OBI . . . . .	3
2.1.1	Images . . . . .	3
2.1.2	Bias . . . . .	3
2.1.3	Parameters . . . . .	4
2.1.4	Events . . . . .	4
2.2	Compared Parameters . . . . .	5
2.3	Star Slots . . . . .	6
2.4	FID Slots . . . . .	6
<b>A</b>	<b>Summary</b>	<b>7</b>
A.1	Status . . . . .	7
A.2	Comments . . . . .	7

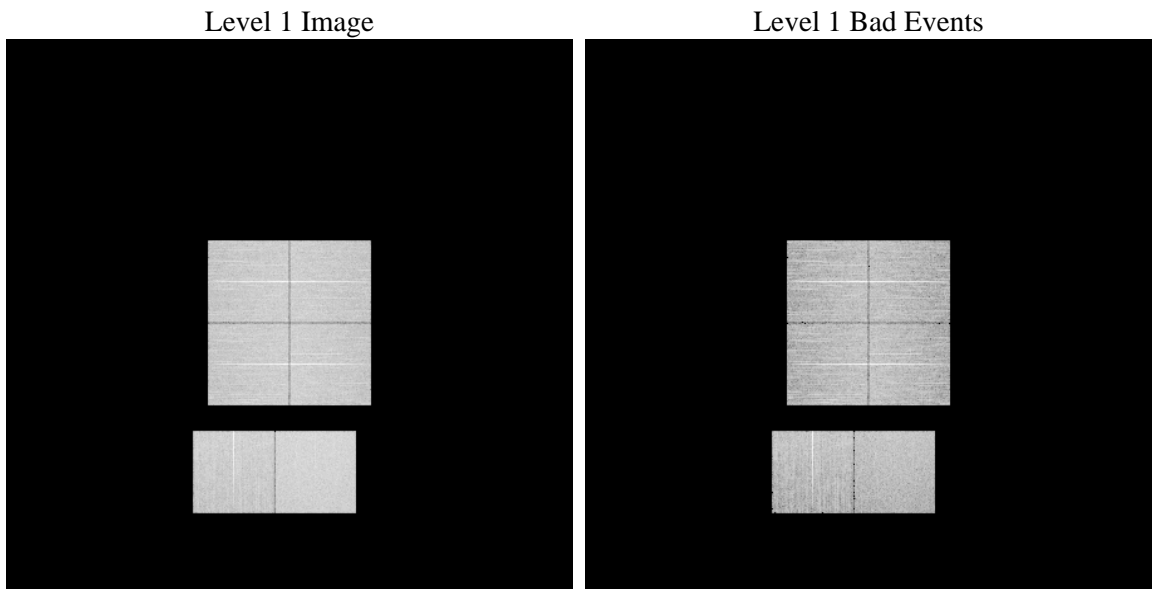
# 1 Front

seq_num	&#160	Sequence number
obs_id	56699	Observation id
title	ACIS-012367 diagnostics	Proposal title
observer	CHANDRA engineering request/realtime commanding	Principal investig
object	&#160	Source name
dtcycle	0	&#160
cycle	P	events from which exps? Prim/Second/Both
ra_targ	0.0	Observer's specified target RA [deg]
dec_targ	0.0	Observer's specified target Dec [deg]
ra_nom	62.417936709557	Nominal RA [deg]
dec_nom	30.583543122077	Nominal Dec [deg]
roll_nom	124.46584221745	Nominal Roll [deg]
revision	2	Processing version of data
ontime	8092.1132621169	Sum of GTIs [s]
livetime	7989.6460515064	Livetime [s]
ontime0	8092.0722221136	Sum of GTIs [s]
ontime1	8092.0311821103	Sum of GTIs [s]
ontime2	8091.990142107	Sum of GTIs [s]
ontime3	8092.1543021202	Sum of GTIs [s]
ontime6	8091.9491021037	Sum of GTIs [s]
ontime7	8092.1132621169	Sum of GTIs [s]
l2events	434132	Number of level 2 events

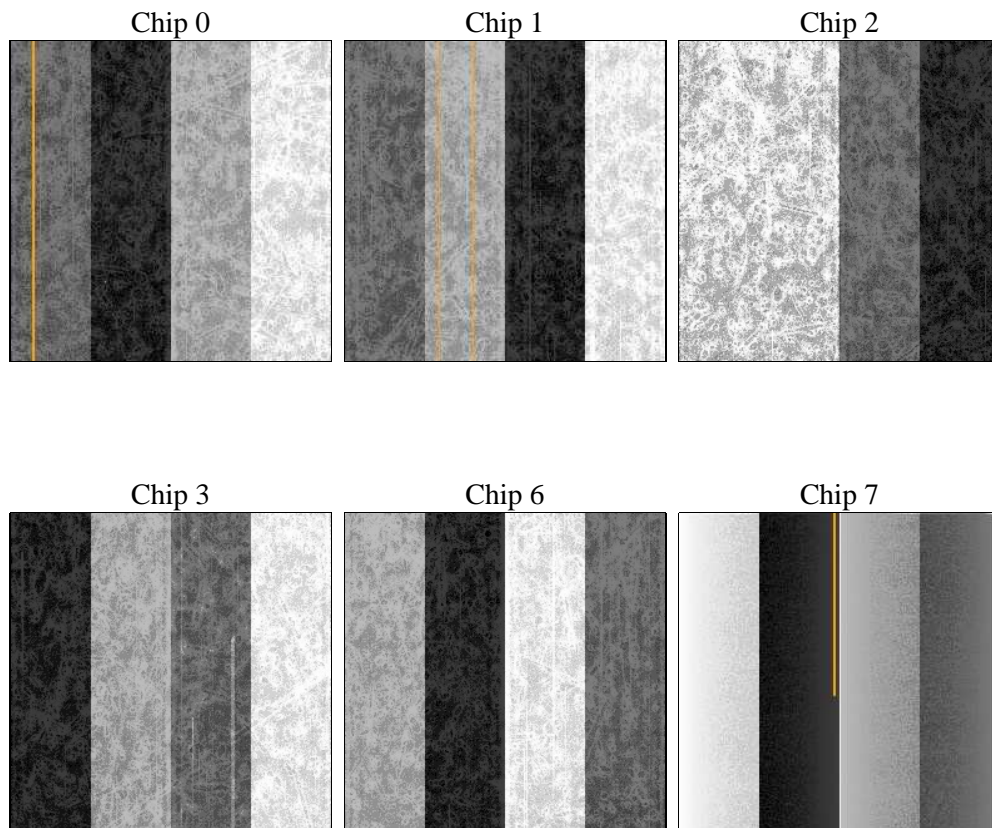
## 2 OBI

### 2.1 OBI

#### 2.1.1 Images



#### 2.1.2 Bias



### 2.1.3 Parameters

obi_num	0	Obi number	sched_exp_time	0.0	[s] Scheduled observation exposure time
ascdsver	8.4.5	Processing system revision	ontime	8092.1132621169	Sum of GTIs [s]
caldsver	4.4.10	&#160	ontime0	8092.0722221136	Sum of GTIs [s]
date	2012-06-16T05:04:05	Date and time of file creation	ontime1	8092.0311821103	Sum of GTIs [s]
revision	2	Processing version of data	ontime2	8091.990142107	Sum of GTIs [s]
			ontime3	8092.1543021202	Sum of GTIs [s]
			ontime6	8091.9491021037	Sum of GTIs [s]
			ontime7	8092.1132621169	Sum of GTIs [s]
			l1events	918880	Number of level 1 events

### 2.1.4 Events

	ccd 0	ccd 1	ccd 2	ccd 3	ccd 6	ccd 7		ccd 0	ccd 1	ccd 2	ccd 3	ccd 6	ccd 7
level 1 events	145969	143057	147697	148769	150500	182888	grade 0 events	37918	37197	38466	38671	38437	19697
rejected events	76294	72832	78609	78771	78431	75065		25%	26%	26%	25%	25%	10%
rejected %	52%	50%	53%	52%	52%	41%	grade 1 events	288	244	324	319	258	195
								0%	0%	0%	0%	0%	0%
							grade 2 events	13145	13575	12250	12603	13197	23863
								9%	9%	8%	8%	8%	13%
							grade 3 events	4751	4736	4819	4870	4839	10075
								3%	3%	3%	3%	3%	5%
							grade 4 events	4630	4846	4892	4952	4834	10002
								3%	3%	3%	3%	3%	5%
							grade 5 events	4277	4240	3841	4529	4527	11693
								2%	2%	2%	3%	3%	6%
							grade 6 events	10776	11440	10241	10468	12379	46626
								7%	7%	6%	7%	8%	25%
							grade 7 events	70184	66779	72864	72357	72029	60737
								48%	46%	49%	48%	47%	33%

## 2.2 Compared Parameters

Parameter	Planned	Actual	Parameter	Planned	Actual
Instrument	ACIS	ACIS	Obspar format version number	7	7
Detector	ACIS-012367	ACIS-012367	Obspar file type	PREDICTED	ACTUAL
Grating	NONE	NONE	Obspar update status	OVERRIDE	OVERRIDE
Data mode	FAINT	FAINT	Number of optional ACIS chips dropped	0	0
Observation mode	SECONDARY	SECONDARY	On-chip summing requested	N	N
[deg] Pointing RA	0	62.41793670955721	Subarray requested	NONE	NONE
[deg] Pointing Dec	0	30.58354312207656	Alternating exposures requested	N	N
[deg] Pointing Roll	0.0	124.4658422174508	[s] Primary exposure time	3.2	3.2
[mm] SIM focus pos	-0.68282252473119	-0.68282252473119			
[mm] SIM defocus	0.8505140384245534	0.8505140384245534			
[mm] SIM translation stage pos	250.4660330802	250.4660330802			
[mm] SIM translation stage offset	-0.01005726120527584	-0.01005726120527584			
[s] Observation start time (MET)	373993138.112093	373993138.112093			
Observation start date	2009-11-07T14:58:58	2009-11-07T14:58:58			
[s] Observation end time (MET)	374002685.064284	374002685.064284			
Observation end date	2009-11-07T17:38:05	2009-11-07T17:38:05			
Read mode	TIMED	TIMED			

## **2.3 Star Slots**

## **2.4 FID Slots**

## A Summary

### A.1 Status

V&V Scientist	Beth Sundheim
V&V Date (YYYY-MM-DD)	2012.06.20
V&V Edition	1
V&V Disposition and Status	OK
V&V Charge Time	8.0921132621169

### A.2 Comments