

# V&V Reference Report

## L2 ASCDS Version : 8.4.5

Observation 56189 - L2 Version 2  
Chandra X-Ray Center

L2 Processing Date : Jun 28 2012

## Contents

<b>1</b>	<b>Front</b>	<b>2</b>
<b>2</b>	<b>OBI</b>	<b>3</b>
2.1	OBI . . . . .	3
2.1.1	Images . . . . .	3
2.1.2	Bias . . . . .	3
2.1.3	Parameters . . . . .	4
2.1.4	Events . . . . .	4
2.2	Compared Parameters . . . . .	5
2.3	Star Slots . . . . .	6
2.4	FID Slots . . . . .	6
<b>A</b>	<b>Summary</b>	<b>7</b>
A.1	Status . . . . .	7
A.2	Comments . . . . .	7

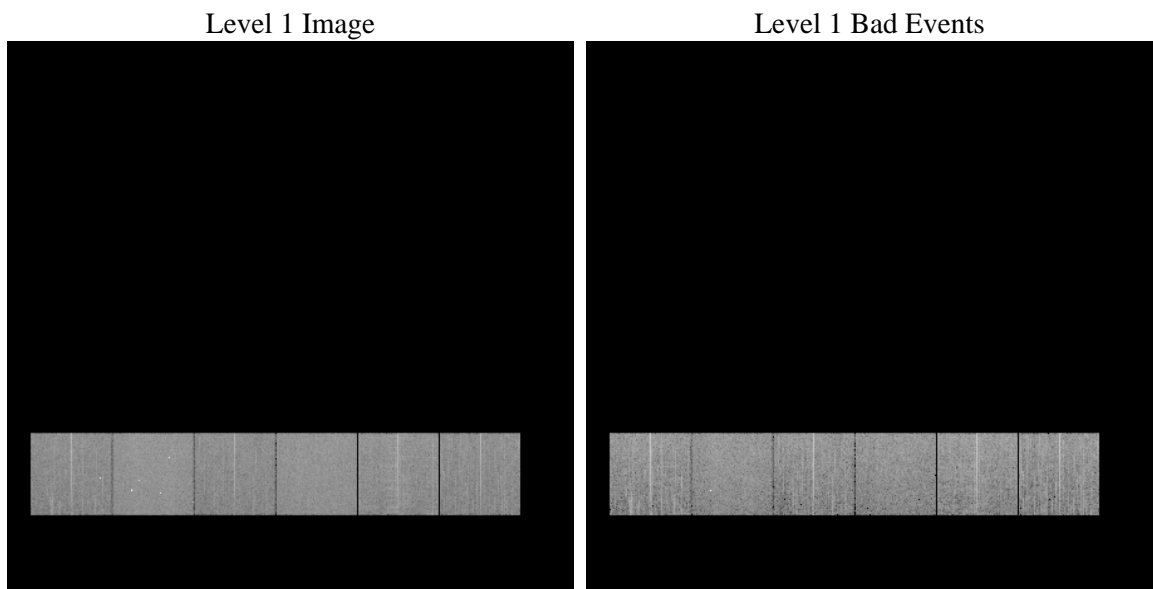
# 1 Front

seq_num	&#160	Sequence number
obs_id	56189	Observation id
title	ACIS-456789 diagnostics	Proposal title
observer	CHANDRA engineering request/realtime commanding	Principal investig
object	&#160	Source name
dtcycle	0	&#160
cycle	P	events from which exps? Prim/Second/Both
ra_targ	0.0	Observer's specified target RA [deg]
dec_targ	0.0	Observer's specified target Dec [deg]
ra_nom	244.04267793639	Nominal RA [deg]
dec_nom	-48.002830528173	Nominal Dec [deg]
roll_nom	321.52827867619	Nominal Roll [deg]
revision	2	Processing version of data
ontime	6070.0322435498	Sum of GTIs [s]
livetime	5993.1698403474	Livetime [s]
ontime4	6069.9091235399	Sum of GTIs [s]
ontime5	6069.9912035465	Sum of GTIs [s]
ontime6	6069.9501635432	Sum of GTIs [s]
ontime7	6070.0322435498	Sum of GTIs [s]
ontime8	6069.8680835366	Sum of GTIs [s]
ontime9	6070.0732835531	Sum of GTIs [s]
l2events	308703	Number of level 2 events

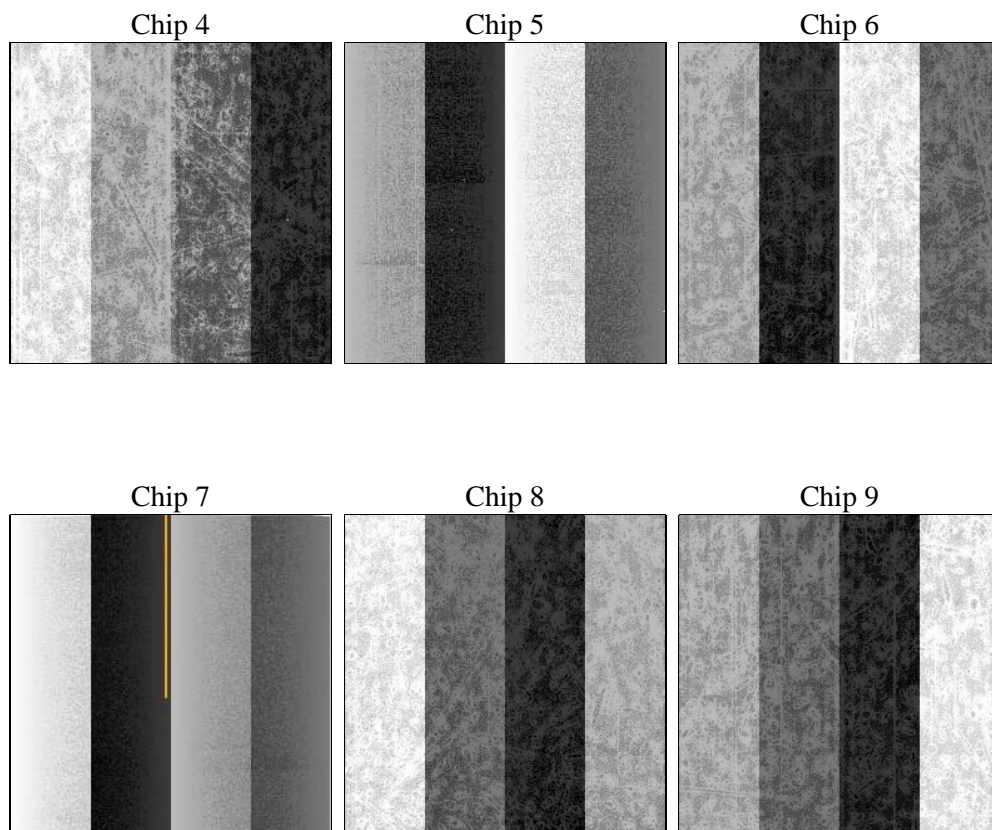
## 2 OBI

### 2.1 OBI

#### 2.1.1 Images



#### 2.1.2 Bias



### 2.1.3 Parameters

obi_num	0	Obi number	sched_exp_time	0.0	[s] Scheduled observation exposure time
ascdsver	8.4.5	Processing system revision	ontime	6070.0322435498	Sum of GTIs [s]
caldsver	4.5.0	&#160	ontime4	6069.9091235399	Sum of GTIs [s]
date	2012-06-28T20:07:55	Date and time of file creation	ontime5	6069.9912035465	Sum of GTIs [s]
revision	2	Processing version of data	ontime6	6069.9501635432	Sum of GTIs [s]
			ontime7	6070.0322435498	Sum of GTIs [s]
			ontime8	6069.8680835366	Sum of GTIs [s]
			ontime9	6070.0732835531	Sum of GTIs [s]
			l1events	661680	Number of level 1 events

### 2.1.4 Events

	ccd 4	ccd 5	ccd 6	ccd 7	ccd 8	ccd 9		ccd 4	ccd 5	ccd 6	ccd 7	ccd 8	ccd 9
level 1 events	101141	125913	98393	119944	115469	100820	grade 0 events	26117	10697	24623	12589	27324	23961
rejected events	55837	52060	51112	48954	58722	55467		25%	8%	25%	10%	23%	23%
rejected %	55%	41%	51%	40%	50%	55%	grade 1 events	271	776	135	104	180	170
								0%	0%	0%	0%	0%	0%
							grade 2 events	7025	26251	8623	15402	10699	7889
								6%	20%	8%	12%	9%	7%
							grade 3 events	3190	2823	3048	6325	4191	3090
								3%	2%	3%	5%	3%	3%
							grade 4 events	3093	2848	3002	6347	4075	3060
								3%	2%	3%	5%	3%	3%
							grade 5 events	2978	6337	2975	7864	4018	3413
								2%	5%	3%	6%	3%	3%
							grade 6 events	5879	31234	7985	30327	10458	7353
								5%	24%	8%	25%	9%	7%
							grade 7 events	52588	44947	48002	40986	54524	51884
								51%	35%	48%	34%	47%	51%

## 2.2 Compared Parameters

Parameter	Planned	Actual	Parameter	Planned	Actual
Instrument	ACIS	ACIS	Obspar format version number	7	7
Detector	ACIS-456789	ACIS-456789	Obspar file type	PREDICTED	ACTUAL
Grating	NONE	NONE	Obspar update status	NONE	UPDATED
Data mode	FAINT	FAINT	Number of optional ACIS chips dropped	0	0
Observation mode	SECONDARY	SECONDARY	On-chip summing requested	N	N
[deg] Pointing RA	0	244.0426779363935	Subarray requested	NONE	NONE
[deg] Pointing Dec	0	-48.00283052817272	Alternating exposures requested	N	N
[deg] Pointing Roll	0.0	321.5282786761884	[s] Primary exposure time	3.2	3.2
[mm] SIM focus pos	-1.429586	-1.428180813131781			
[mm] SIM defocus	0.1037507710433287	0.1051558262725154			
[mm] SIM translation stage pos	250.455976	250.466033080201			
[mm] SIM translation stage offset	0	-0.01005468664627074			
[s] Observation start time (MET)	392961883.373765	392961882.34877			
Observation start date	2010-06-15T04:04:43	2010-06-15T04:04:42			
[s] Observation end time (MET)	392977797.524576	392977796.49959			
Observation end date	2010-06-15T08:29:58	2010-06-15T08:29:56			
Read mode	TIMED	TIMED			

## 2.3 Star Slots

## 2.4 FID Slots

## **A Summary**

### **A.1 Status**

V&V Scientist	Jen Lauer
V&V Date (YYYY-MM-DD)	2012.07.05
V&V Edition	1
V&V Disposition and Status	OK
V&V Charge Time	6.0700322435498

### **A.2 Comments**