

# V&V Reference Report

## L2 ASCDS Version : 8.4.5

Observation 56129 - L2 Version 2  
Chandra X-Ray Center

L2 Processing Date : Jun 29 2012

## Contents

<b>1</b>	<b>Front</b>	<b>2</b>
<b>2</b>	<b>OBI</b>	<b>3</b>
2.1	OBI . . . . .	3
2.1.1	Images . . . . .	3
2.1.2	Bias . . . . .	3
2.1.3	Parameters . . . . .	4
2.1.4	Events . . . . .	4
2.2	Compared Parameters . . . . .	5
2.3	Star Slots . . . . .	6
2.4	FID Slots . . . . .	6
<b>A</b>	<b>Summary</b>	<b>7</b>
A.1	Status . . . . .	7
A.2	Comments . . . . .	7

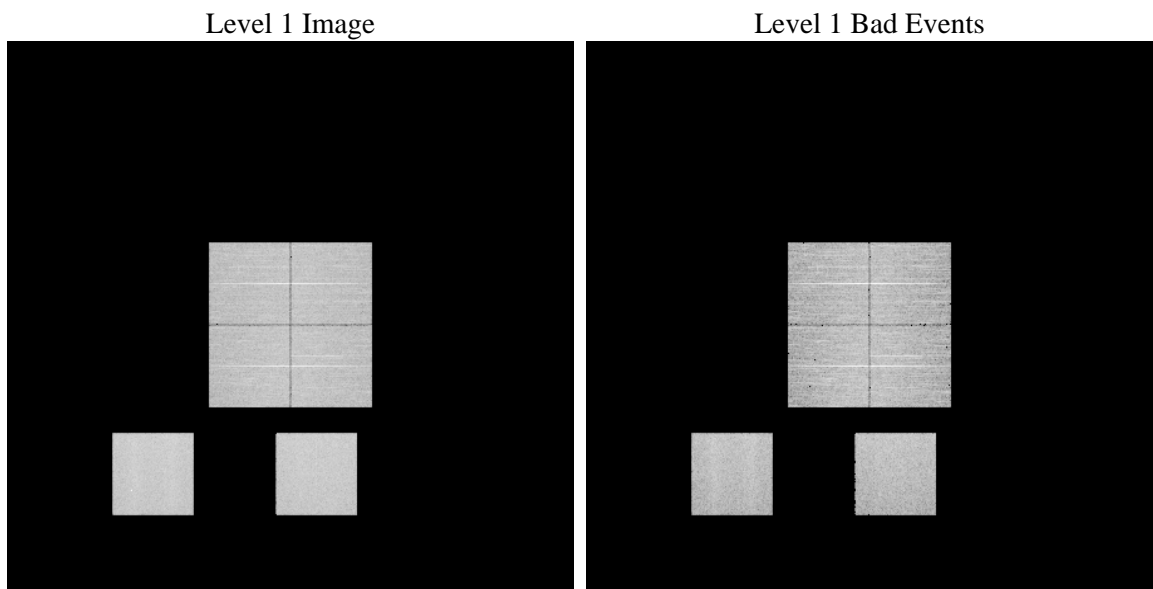
# 1 Front

seq_num	&#160	Sequence number
obs_id	56129	Observation id
title	ACIS-012357 diagnostics	Proposal title
observer	CHANDRA engineering request/realtime commanding	Principal investig
object	&#160	Source name
dtcycle	0	&#160
cycle	P	events from which exps? Prim/Second/Both
ra_targ	0.0	Observer's specified target RA [deg]
dec_targ	0.0	Observer's specified target Dec [deg]
ra_nom	318.69257963313	Nominal RA [deg]
dec_nom	-37.471833493171	Nominal Dec [deg]
roll_nom	68.899298614288	Nominal Roll [deg]
revision	2	Processing version of data
ontime	8275.1999692321	Sum of GTIs [s]
livetime	8170.4144044945	Livetime [s]
ontime0	8275.1999692321	Sum of GTIs [s]
ontime1	8275.1999692321	Sum of GTIs [s]
ontime2	8271.9589589834	Sum of GTIs [s]
ontime3	8275.1999692321	Sum of GTIs [s]
ontime5	8275.1999692321	Sum of GTIs [s]
ontime7	8275.1999692321	Sum of GTIs [s]
l2events	408426	Number of level 2 events

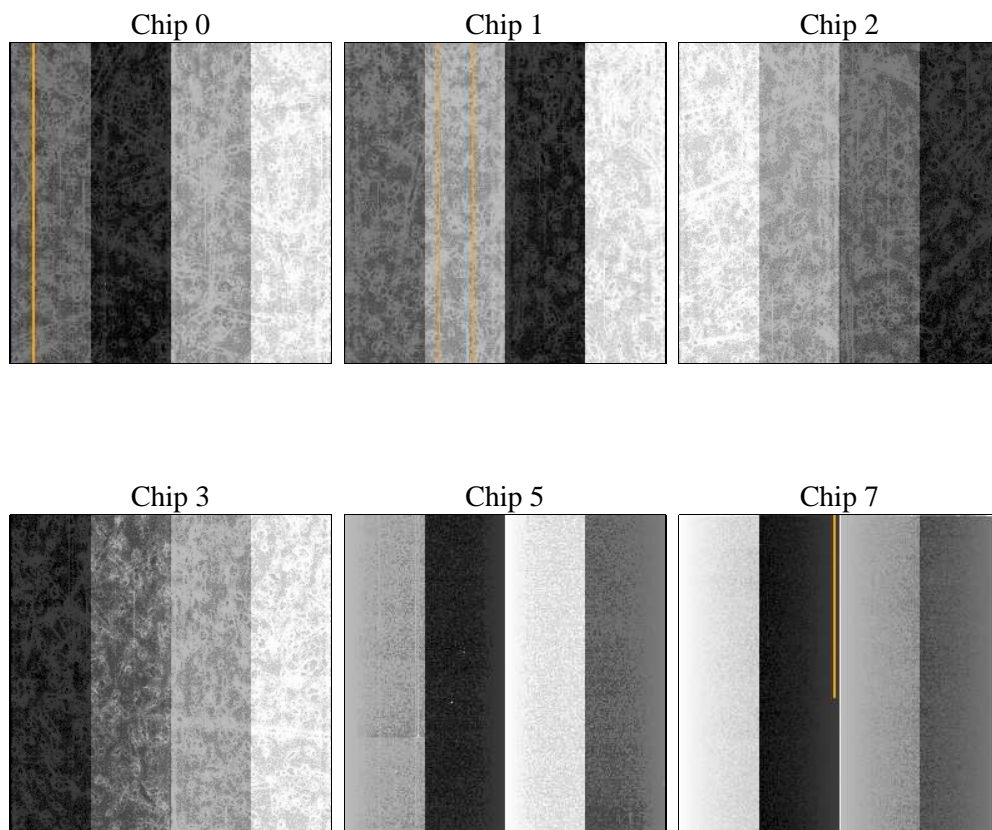
## 2 OBI

### 2.1 OBI

#### 2.1.1 Images



#### 2.1.2 Bias



### 2.1.3 Parameters

obi_num	0	Obi number	sched_exp_time	0.0	[s] Scheduled observation exposure time
ascdsver	8.4.5	Processing system revision	ontime	8275.1999692321	Sum of GTIs [s]
caldsver	4.5.0	&#160	ontime0	8275.1999692321	Sum of GTIs [s]
date	2012-06-30T02:14:21	Date and time of file creation	ontime1	8275.1999692321	Sum of GTIs [s]
revision	2	Processing version of data	ontime2	8271.9589589834	Sum of GTIs [s]
			ontime3	8275.1999692321	Sum of GTIs [s]
			ontime5	8275.1999692321	Sum of GTIs [s]
			ontime7	8275.1999692321	Sum of GTIs [s]
			l1events	837322	Number of level 1 events

### 2.1.4 Events

	ccd 0	ccd 1	ccd 2	ccd 3	ccd 5	ccd 7		ccd 0	ccd 1	ccd 2	ccd 3	ccd 5	ccd 7
level 1 events	126028	126090	128531	130241	164782	161650	grade 0 events	31030	29147	31922	33139	9153	15385
rejected events	66347	65709	69449	69582	70267	67872		24%	23%	24%	25%	5%	9%
rejected %	52%	52%	54%	53%	42%	41%	grade 1 events	209	161	196	235	227	137
								0%	0%	0%	0%	0%	0%
							grade 2 events	11546	13846	10130	10400	35636	20897
								9%	10%	7%	7%	21%	12%
							grade 3 events	3907	3749	4027	4032	3344	7870
								3%	2%	3%	3%	2%	4%
							grade 4 events	3816	3667	4071	4086	3174	7631
								3%	2%	3%	3%	1%	4%
							grade 5 events	3540	3719	3404	3975	7631	9761
								2%	2%	2%	3%	4%	6%
							grade 6 events	9382	9972	8932	9002	43208	41995
								7%	7%	6%	6%	26%	25%
							grade 7 events	62598	61829	65849	65372	62409	57974
								49%	49%	51%	50%	37%	35%

## 2.2 Compared Parameters

Parameter	Planned	Actual	Parameter	Planned	Actual
Instrument	ACIS	ACIS	Obspar format version number	7	7
Detector	ACIS-012357	ACIS-012357	Obspar file type	PREDICTED	ACTUAL
Grating	NONE	NONE	Obspar update status	NONE	UPDATED
Data mode	FAINT	FAINT	Number of optional ACIS chips dropped	0	0
Observation mode	SECONDARY	SECONDARY	On-chip summing requested	N	N
[deg] Pointing RA	0	318.6925796331344	Subarray requested	NONE	NONE
[deg] Pointing Dec	0	-37.47183349317104	Alternating exposures requested	N	N
[deg] Pointing Roll	0.0	68.89929861428817	[s] Primary exposure time	3.2	3.2
[mm] SIM focus pos	-1.429586	-1.428180813131781			
[mm] SIM defocus	0.1037507710433287	0.1051558262725154			
[mm] SIM translation stage pos	250.455976	250.466033080201			
[mm] SIM translation stage offset	0	-0.01005468664627074			
[s] Observation start time (MET)	395052801.480521	395052800.45552			
Observation start date	2010-07-09T08:53:21	2010-07-09T08:53:20			
[s] Observation end time (MET)	395062981.781041	395062980.75604			
Observation end date	2010-07-09T11:43:02	2010-07-09T11:43:00			
Read mode	TIMED	TIMED			

## **2.3 Star Slots**

## **2.4 FID Slots**

## **A Summary**

### **A.1 Status**

V&V Scientist	Jen Lauer
V&V Date (YYYY-MM-DD)	2012.07.09
V&V Edition	1
V&V Disposition and Status	OK
V&V Charge Time	8.2751999692321

### **A.2 Comments**