

V&V Reference Report

L2 ASCDS Version : 8.4.3

Observation 55729 - L2 Version 2
Chandra X-Ray Center

L2 Processing Date : Feb 2 2012

Contents

1	Front	2
2	OBI	3
2.1	OBI	3
2.1.1	Images	3
2.1.2	Bias	3
2.1.3	Parameters	4
2.1.4	Events	4
2.2	Compared Parameters	5
2.3	Star Slots	6
2.4	FID Slots	6
A	Summary	7
A.1	Status	7
A.2	Comments	7

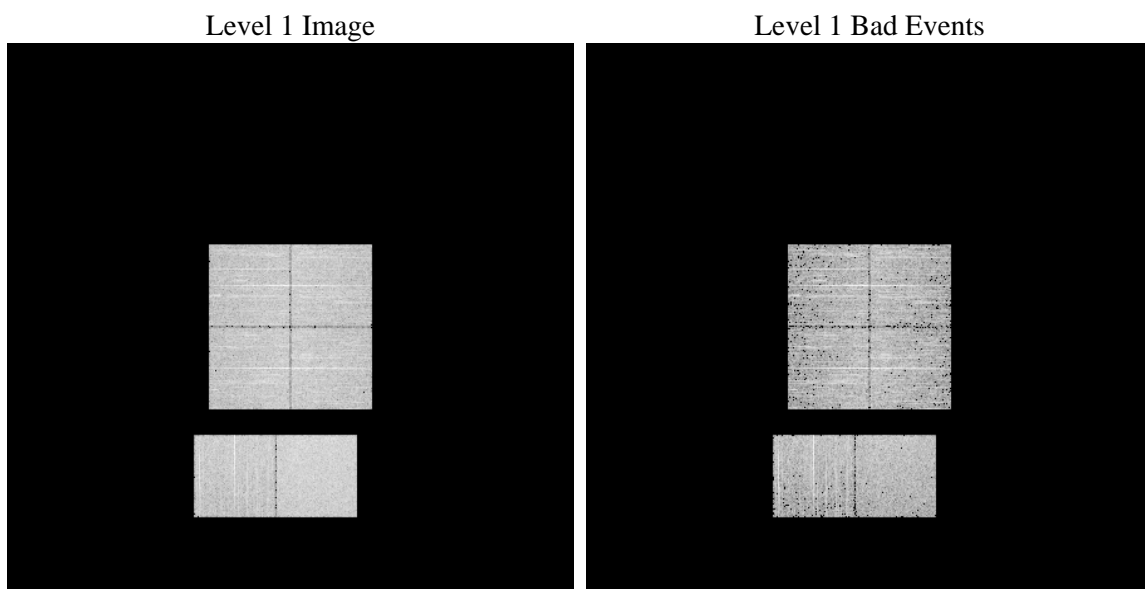
1 Front

seq_num	 	Sequence number
obs_id	55729	Observation id
title	ACIS-012367 diagnostics	Proposal title
observer	CHANDRA engineering request/realtime commanding	Principal investig
object	 	Source name
dtcycle	0	
cycle	P	events from which exps? Prim/Second/Both
ra_targ	0.0	Observer's specified target RA [deg]
dec_targ	0.0	Observer's specified target Dec [deg]
ra_nom	356.82072744076	Nominal RA [deg]
dec_nom	38.940965978196	Nominal Dec [deg]
roll_nom	307.0336829293	Nominal Roll [deg]
revision	2	Processing version of data
ontime	3710.9900339842	Sum of GTIs [s]
livetime	3663.9992436839	Livetime [s]
ontime0	3710.9489939809	Sum of GTIs [s]
ontime1	3707.666983664	Sum of GTIs [s]
ontime2	3710.8669139743	Sum of GTIs [s]
ontime3	3711.0310739875	Sum of GTIs [s]
ontime6	3710.825873971	Sum of GTIs [s]
ontime7	3710.9900339842	Sum of GTIs [s]
l2events	161025	Number of level 2 events

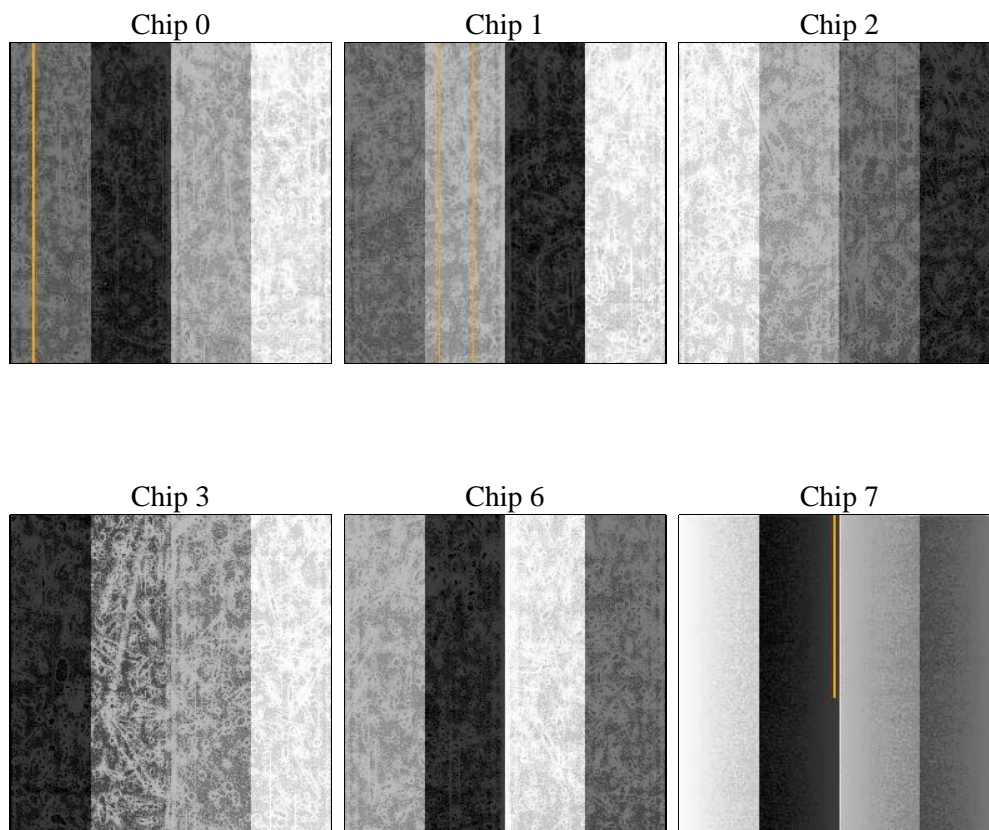
2 OBI

2.1 OBI

2.1.1 Images



2.1.2 Bias



2.1.3 Parameters

obi_num	0	Obi number	sched_exp_time	0.0	[s] Scheduled observation exposure time
ascdsver	8.4.3	Processing system revision	ontime	3710.9900339842	Sum of GTIs [s]
caldsver	4.4.7	 	ontime0	3710.9489939809	Sum of GTIs [s]
date	2012-02-02T08:06:49	Date and time of file creation	ontime1	3707.666983664	Sum of GTIs [s]
revision	2	Processing version of data	ontime2	3710.8669139743	Sum of GTIs [s]
			ontime3	3711.0310739875	Sum of GTIs [s]
			ontime6	3710.825873971	Sum of GTIs [s]
			ontime7	3710.9900339842	Sum of GTIs [s]
			l1events	347343	Number of level 1 events

2.1.4 Events

	ccd 0	ccd 1	ccd 2	ccd 3	ccd 6	ccd 7		ccd 0	ccd 1	ccd 2	ccd 3	ccd 6	ccd 7
level 1 events	53495	54582	55048	55845	57653	70720	grade 0 events	13846	13201	14057	14060	14168	7491
rejected events	27856	28960	29565	30009	30768	29990		25%	24%	25%	25%	24%	10%
rejected %	52%	53%	53%	53%	53%	42%	grade 1 events	103	78	112	90	83	52
								0%	0%	0%	0%	0%	0%
							grade 2 events	4858	5066	4577	4755	4932	9133
								9%	9%	8%	8%	8%	12%
							grade 3 events	1807	1834	1802	1854	1799	3715
								3%	3%	3%	3%	3%	5%
							grade 4 events	1784	1756	1761	1749	1804	3807
								3%	3%	3%	3%	3%	5%
							grade 5 events	1765	1779	1670	1844	1858	4781
								3%	3%	3%	3%	3%	6%
							grade 6 events	4094	4452	4026	4170	4949	17632
								7%	8%	7%	7%	8%	24%
							grade 7 events	25238	26416	27043	27323	28060	24109
								47%	48%	49%	48%	48%	34%

2.2 Compared Parameters

Parameter	Planned	Actual
Instrument	ACIS	ACIS
Detector	ACIS-012367	ACIS-012367
Grating	NONE	NONE
Data mode	FAINT	FAINT
Observation mode	SECONDARY	SECONDARY
[deg] Pointing RA	0	356.8207274407608
[deg] Pointing Dec	0	38.94096597819647
[deg] Pointing Roll	0.0	307.0336829292971
[mm] SIM focus pos	-1.4281808131	-1.4281808131
[mm] SIM defocus	0.1051557500557434	0.1051557500557434
[mm] SIM translation stage pos	250.4660330802	250.4660330802
[mm] SIM translation stage offset	-0.01005726120527584	-0.01005726120527584
[s] Observation start time (MET)	411699130.336164	411699130.336164
Observation start date	2011-01-18T00:52:10	2011-01-18T00:52:10
[s] Observation end time (MET)	411704201.944486	411704201.944486
Observation end date	2011-01-18T02:16:42	2011-01-18T02:16:41
Read mode	TIMED	TIMED

Parameter	Planned	Actual
Obspar format version number	7	7
Obspar file type	PREDICTED	ACTUAL
Obspar update status	OVERRIDE	OVERRIDE
Number of optional ACIS chips dropped	0	0
On-chip summing requested	N	N
Subarray requested	NONE	NONE
Alternating exposures requested	N	N
[s] Primary exposure time	3.2	3.2

2.3 Star Slots

2.4 FID Slots

A Summary

A.1 Status

V&V Scientist	Joy Nichols
V&V Date (YYYY-MM-DD)	2012.02.02
V&V Edition	1
V&V Disposition and Status	OK
V&V Charge Time	3.7109900339842

A.2 Comments