

V&V Reference Report

L2 ASCDS Version : 8.4.3

Observation 55459 - L2 Version 2
Chandra X-Ray Center

L2 Processing Date : Feb 9 2012

Contents

1	Front	2
2	OBI	3
2.1	OBI	3
2.1.1	Images	3
2.1.2	Bias	3
2.1.3	Parameters	4
2.1.4	Events	4
2.2	Compared Parameters	5
2.3	Star Slots	6
2.4	FID Slots	6
A	Summary	7
A.1	Status	7
A.2	Comments	7

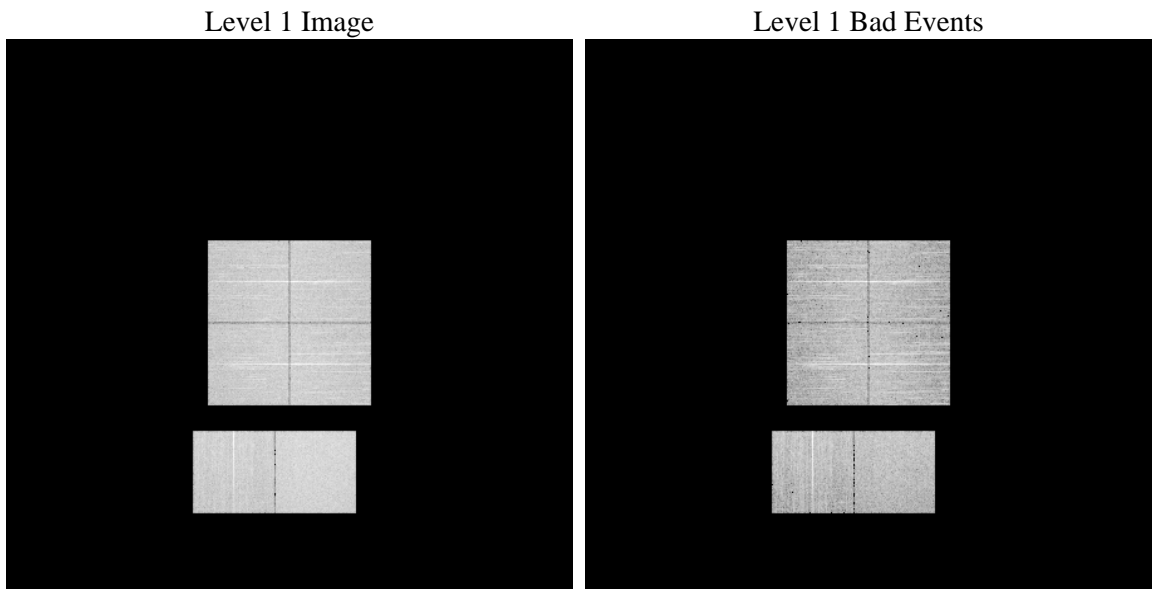
1 Front

seq_num	 	Sequence number
obs_id	55459	Observation id
title	ACIS-012367 diagnostics	Proposal title
observer	CHANDRA engineering request/realtime commanding	Principal investig
object	 	Source name
dtcycle	0	
cycle	P	events from which exps? Prim/Second/Both
ra_targ	0.0	Observer's specified target RA [deg]
dec_targ	0.0	Observer's specified target Dec [deg]
ra_nom	337.9832817245	Nominal RA [deg]
dec_nom	57.027242941432	Nominal Dec [deg]
roll_nom	75.511249421166	Nominal Roll [deg]
revision	2	Processing version of data
ontime	8246.3999693394	Sum of GTIs [s]
livetime	8141.9790875417	Livetime [s]
ontime0	8246.3999693394	Sum of GTIs [s]
ontime1	8243.1589990258	Sum of GTIs [s]
ontime2	8246.3999693394	Sum of GTIs [s]
ontime3	8246.3999693394	Sum of GTIs [s]
ontime6	8246.3999693394	Sum of GTIs [s]
ontime7	8246.3999693394	Sum of GTIs [s]
l2events	349756	Number of level 2 events

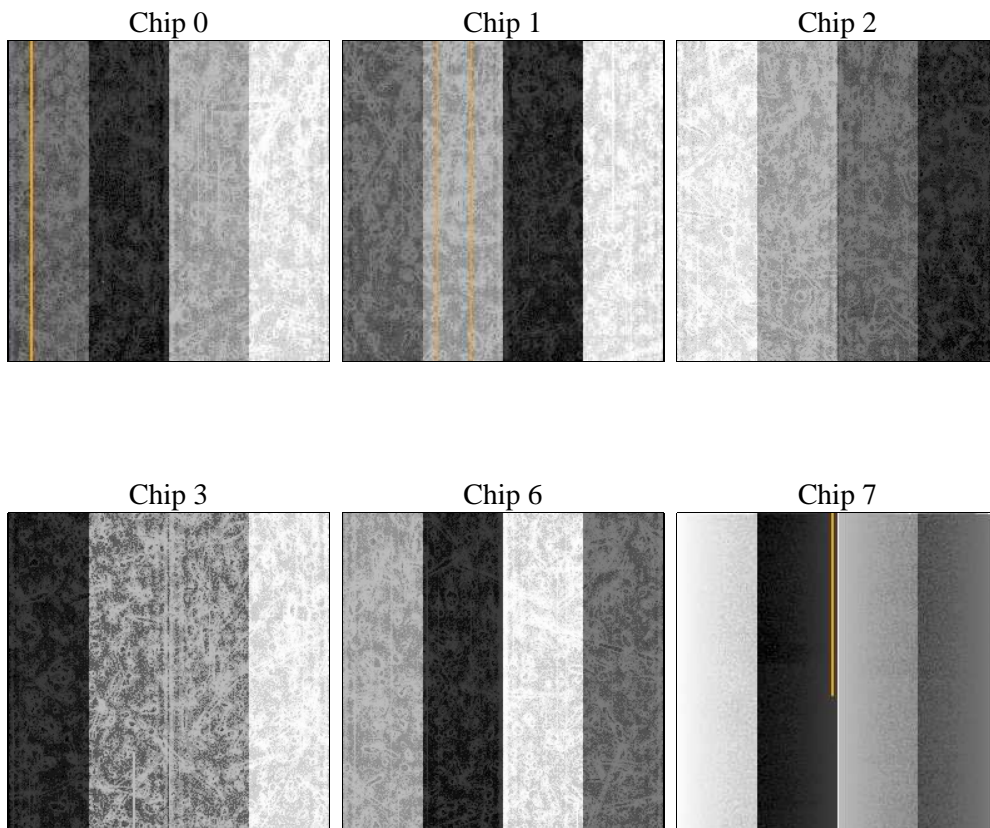
2 OBI

2.1 OBI

2.1.1 Images



2.1.2 Bias



2.1.3 Parameters

obi_num	0	Obi number	sched_exp_time	0.0	[s] Scheduled observation exposure time
ascdsver	8.4.3	Processing system revision	ontime	8246.3999693394	Sum of GTIs [s]
caldsver	4.4.7	 	ontime0	8246.3999693394	Sum of GTIs [s]
date	2012-02-09T15:31:16	Date and time of file creation	ontime1	8243.1589990258	Sum of GTIs [s]
revision	2	Processing version of data	ontime2	8246.3999693394	Sum of GTIs [s]
			ontime3	8246.3999693394	Sum of GTIs [s]
			ontime6	8246.3999693394	Sum of GTIs [s]
			ontime7	8246.3999693394	Sum of GTIs [s]
			l1events	712601	Number of level 1 events

2.1.4 Events

	ccd 0	ccd 1	ccd 2	ccd 3	ccd 6	ccd 7		ccd 0	ccd 1	ccd 2	ccd 3	ccd 6	ccd 7
level 1 events	110785	111006	112445	117186	118089	143090	grade 0 events	29224	28052	30351	30380	28788	14390
rejected events	54335	53601	56269	60438	59363	58867		26%	25%	26%	25%	24%	10%
rejected %	49%	48%	50%	51%	50%	41%	grade 1 events	183	126	189	204	149	98
								0%	0%	0%	0%	0%	0%
							grade 2 events	10807	12466	9759	10121	11900	19083
								9%	11%	8%	8%	10%	13%
							grade 3 events	3657	3622	3663	3797	3604	7233
								3%	3%	3%	3%	3%	5%
							grade 4 events	3630	3662	3757	3827	3606	7037
								3%	3%	3%	3%	3%	4%
							grade 5 events	3330	3346	3083	3665	3390	8742
								3%	3%	2%	3%	2%	6%
							grade 6 events	9322	9850	8872	8836	11029	36836
								8%	8%	7%	7%	9%	25%
							grade 7 events	50632	49882	52771	56356	55623	49671
								45%	44%	46%	48%	47%	34%

2.2 Compared Parameters

Parameter	Planned	Actual	Parameter	Planned	Actual
Instrument	ACIS	ACIS	Obspar format version number	7	7
Detector	ACIS-012367	ACIS-012367	Obspar file type	PREDICTED	ACTUAL
Grating	NONE	NONE	Obspar update status	NONE	UPDATED
Data mode	FAINT	FAINT	Number of optional ACIS chips dropped	0	0
Observation mode	SECONDARY	SECONDARY	On-chip summing requested	N	N
[deg] Pointing RA	0	337.9832817245022	Subarray requested	NONE	NONE
[deg] Pointing Dec	0	57.02724294143223	Alternating exposures requested	N	N
[deg] Pointing Roll	0.0	75.51124942116556	[s] Primary exposure time	3.2	3.2
[mm] SIM focus pos	-1.429586	-1.428180813131781			
[mm] SIM defocus	0.1037507710433287	0.1051558262725154			
[mm] SIM translation stage pos	250.455976	250.4635187648994			
[mm] SIM translation stage offset	0	-0.007540371344731511			
[s] Observation start time (MET)	420869223.611197	420869222.58621			
Observation start date	2011-05-04T04:07:04	2011-05-04T04:07:02			
[s] Observation end time (MET)	420879223.511716	420879222.48673			
Observation end date	2011-05-04T06:53:44	2011-05-04T06:53:42			
Read mode	TIMED	TIMED			

2.3 Star Slots

2.4 FID Slots

A Summary

A.1 Status

V&V Scientist	Beth Sundheim
V&V Date (YYYY-MM-DD)	2012.02.12
V&V Edition	1
V&V Disposition and Status	OK
V&V Charge Time	8.2463999693394

A.2 Comments