

V&V Reference Report

L2 ASCDS Version : 8.4.3.1

Observation 5499 - L2 Version 2
Chandra X-Ray Center

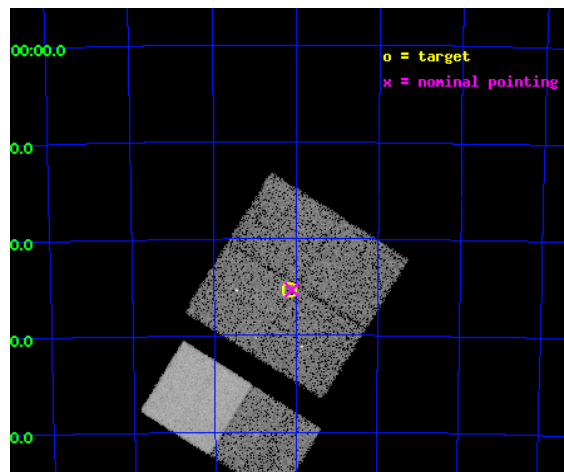
L2 Processing Date : Mar 27 2012

Contents

1	Front	2
2	OBI	3
2.1	OBI	3
2.1.1	Images	3
2.1.2	Bias	3
2.1.3	Parameters	4
2.1.4	Events	4
2.2	Compared Parameters	5
2.3	Aspect	6
2.4	Star Slots	9
2.4.1	Slot 3	9
2.4.2	Slot 4	10
2.4.3	Slot 5	11
2.4.4	Slot 6	12
2.4.5	Slot 7	13
2.5	FID Slots	14
2.5.1	Slot 0	14
2.5.2	Slot 1	15
2.5.3	Slot 2	16
A	Summary	17
A.1	Status	17
A.2	Comments	17

1 Front

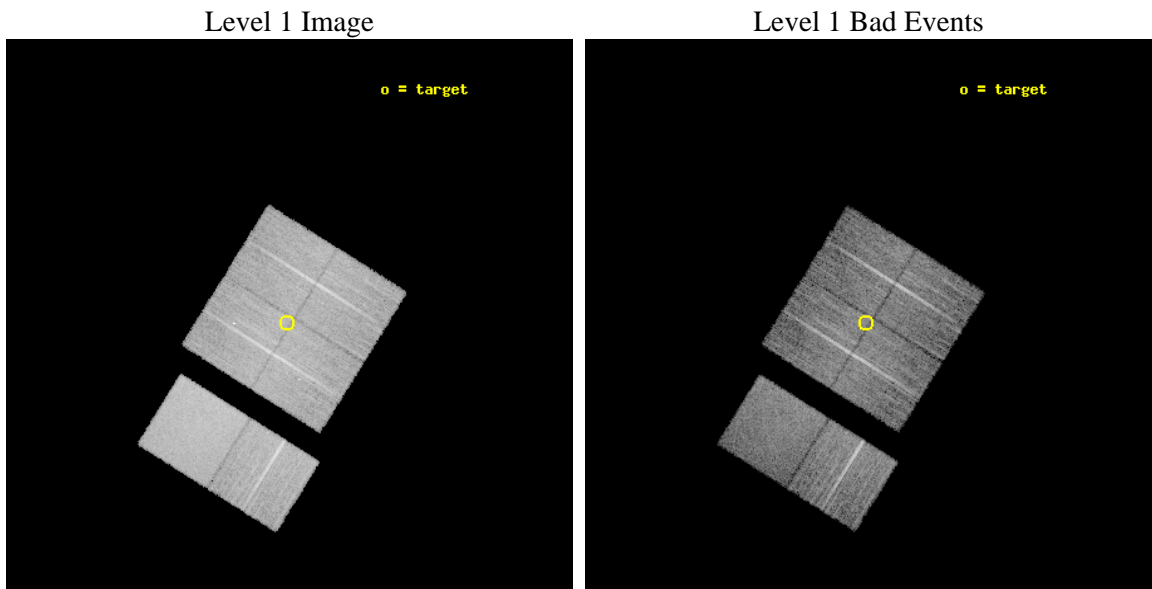
seq_num	400429	Sequence number
obs_id	5499	Observation id
title	Discovering X-ray pulsars in the Wing of the Small Magellanic Cloud	
observer	Prof Malcolm Coe	Principal investigator
object	SMCwing 20	Source name
dtcycle	0	
cycle	P	events from which exps? Prim/Second/Both
ra_targ	14.041667	Observer's specified target RA [deg]
dec_targ	-73.420833	Observer's specified target Dec [deg]
ra_nom	14.02547020077	Nominal RA [deg]
dec_nom	-73.421598121116	Nominal Dec [deg]
roll_nom	212.07709088827	Nominal Roll [deg]
revision	2	Processing version of data
ontime	9759.9999636412	Sum of GTIs [s]
livetime	9636.4129673351	Livetime [s]
ontime0	9759.9999636412	Sum of GTIs [s]
ontime1	9759.9999636412	Sum of GTIs [s]
ontime2	9759.9999636412	Sum of GTIs [s]
ontime3	9759.9999636412	Sum of GTIs [s]
ontime6	9759.9999636412	Sum of GTIs [s]
ontime7	9759.9999636412	Sum of GTIs [s]
l2events	90179	Number of level 2 events



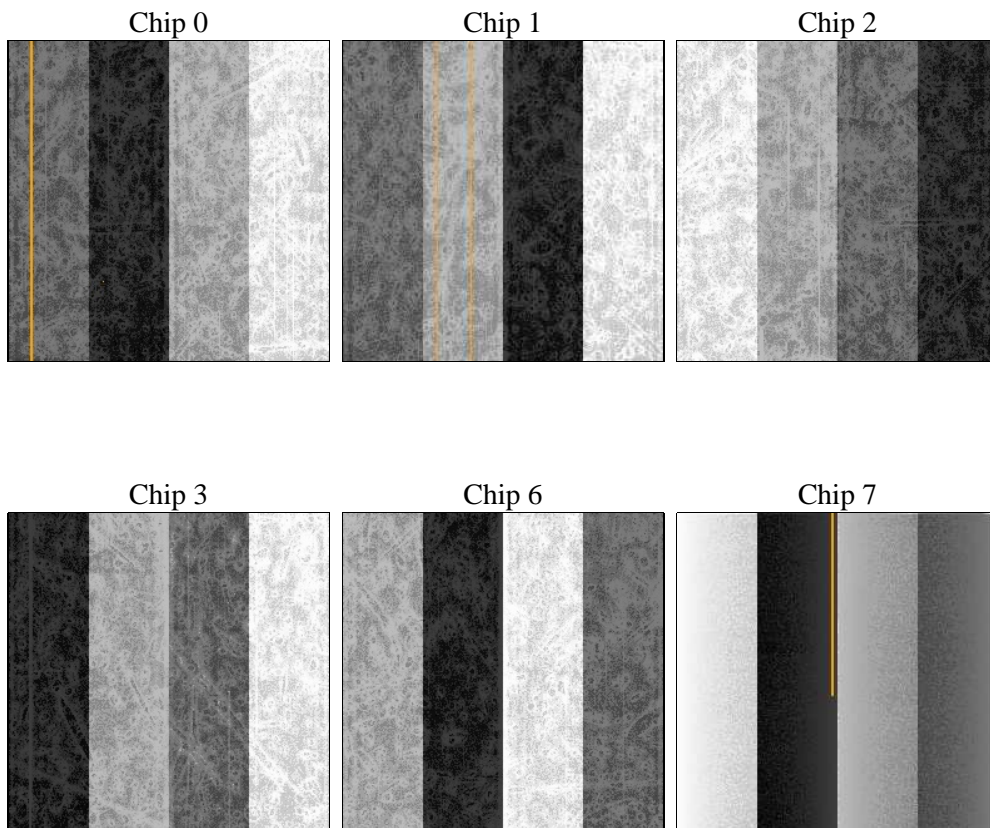
2 OBI

2.1 OBI

2.1.1 Images



2.1.2 Bias



2.1.3 Parameters

obi_num	2	Obi number	sched_exp_time	10000.000000	[s] Scheduled observation exposure time
ascdsver	8.4.3	Processing system revision	ontime	9759.9999636412	Sum of GTIs [s]
caldsver	4.4.8	 	ontime0	9759.9999636412	Sum of GTIs [s]
date	2012-03-27T03:27:47	Date and time of file creation	ontime1	9759.9999636412	Sum of GTIs [s]
revision	2	Processing version of data	ontime2	9759.9999636412	Sum of GTIs [s]
			ontime3	9759.9999636412	Sum of GTIs [s]
			ontime6	9759.9999636412	Sum of GTIs [s]
			ontime7	9759.9999636412	Sum of GTIs [s]
			l1events	519006	Number of level 1 events

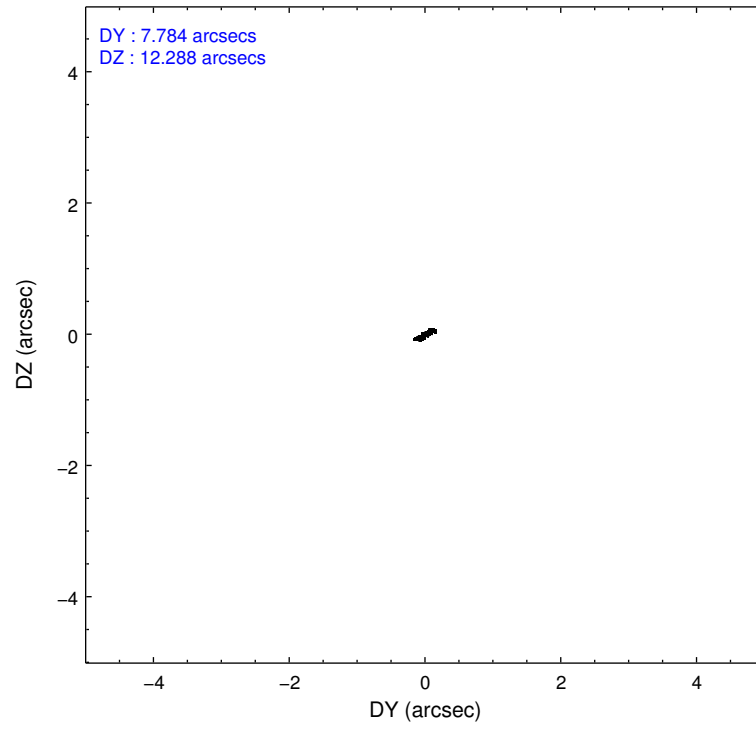
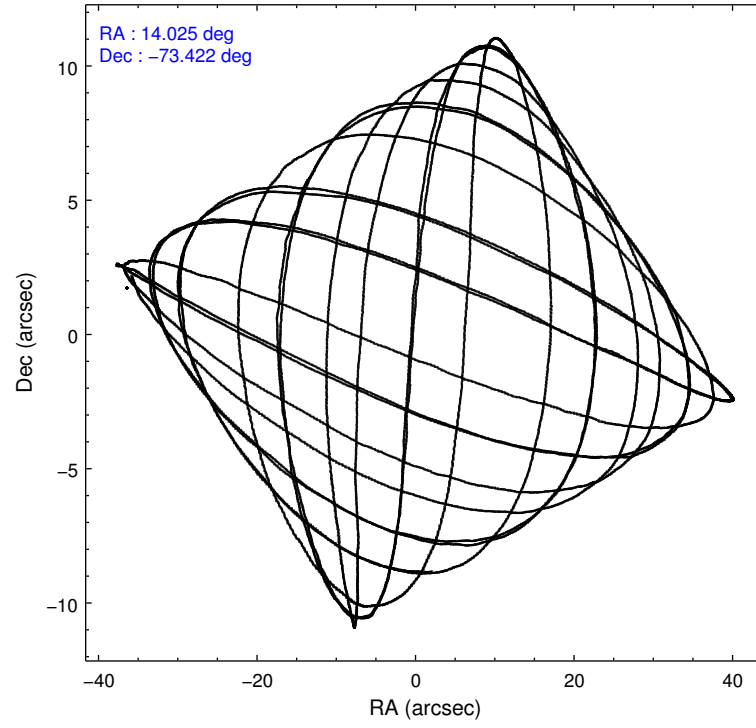
2.1.4 Events

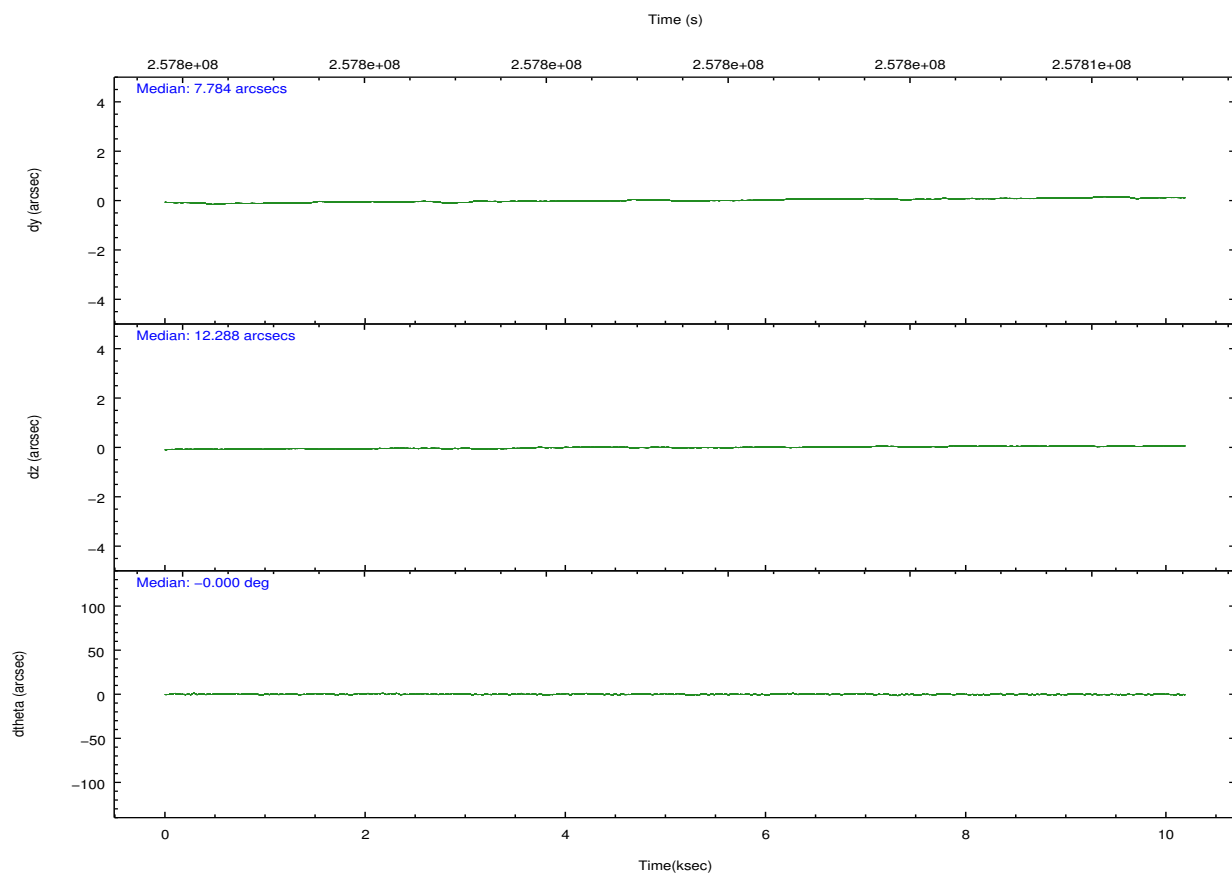
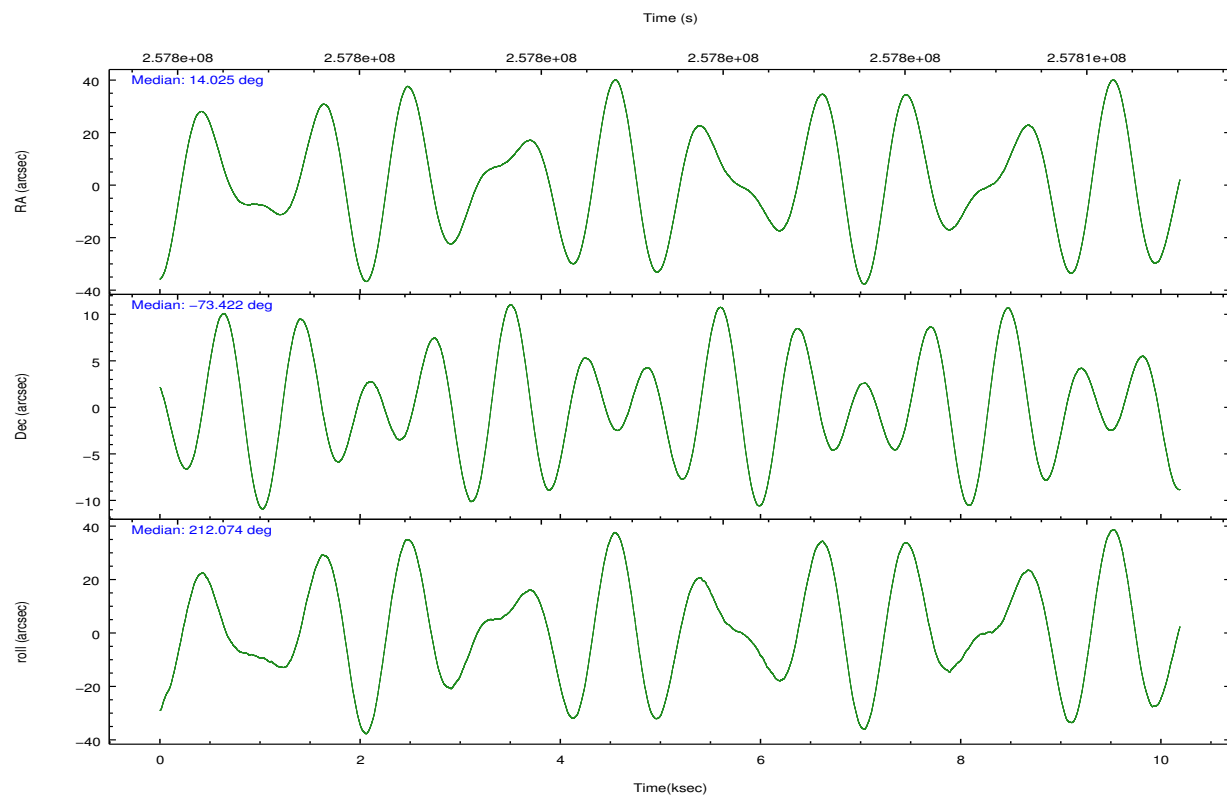
	ccd 0	ccd 1	ccd 2	ccd 3	ccd 6	ccd 7		ccd 0	ccd 1	ccd 2	ccd 3	ccd 6	ccd 7
level 1 events	76188	76371	83257	81686	87780	113724	grade 0 events	4185	4017	4612	4619	3862	4152
rejected events	66206	66084	73165	71283	77868	66338		5%	5%	5%	5%	4%	3%
rejected %	86%	86%	87%	87%	88%	58%	grade 1 events	40	36	48	49	49	117
								0%	0%	0%	0%	0%	0%
							grade 2 events	2169	2326	2005	2033	2101	9481
								2%	3%	2%	2%	2%	8%
							grade 3 events	932	970	889	997	957	4140
								1%	1%	1%	1%	1%	3%
							grade 4 events	909	1023	915	1012	935	4084
								1%	1%	1%	1%	1%	3%
							grade 5 events	3278	3628	3220	3808	4018	10830
								4%	4%	3%	4%	4%	9%
							grade 6 events	1788	1953	1673	1745	2064	25548
								2%	2%	2%	2%	2%	22%
							grade 7 events	62887	62418	69895	67423	73794	55372
								82%	81%	83%	82%	84%	48%

2.2 Compared Parameters

Parameter	Planned	Actual	Parameter	Planned	Actual
Instrument	ACIS	ACIS	Obspar format version number	7	7
Detector	ACIS-012367	ACIS-012367	Obspar file type	PREDICTED	ACTUAL
Grating	NONE	NONE	Obspar update status	NONE	UPDATED
Data mode	FAINT	FAINT	Number of optional ACIS chips dropped	0	0
Observation mode	POINTING	POINTING	On-chip summing requested	N	N
[deg] Pointing RA	14.070156	14.0254702007705	Subarray requested	NONE	NONE
[deg] Pointing Dec	-73.397316	-73.42159812111593	Alternating exposures requested	N	N
[deg] Pointing Roll	211.911226	212.0770908882706	[s] Primary exposure time	0.000000	3.2
[mm] SIM focus pos	-0.782348	-0.7809083437167272			
[mm] SIM defocus	0	0.001439871863259334			
[mm] SIM translation stage pos	-233.592463	-233.5874344608287			
[mm] SIM translation stage offset	0	-0.005018542100998502			
[s] Observation start time (MET)	257796509.184000	257796133.56351			
Observation start date	2006-03-03T18:07:24	2006-03-03T18:02:13			
[s] Observation end time (MET)	257806509.184000	257807713.50155			
Observation end date	2006-03-03T20:54:04	2006-03-03T21:15:13			
Read mode	TIMED	TIMED			

2.3 Aspect



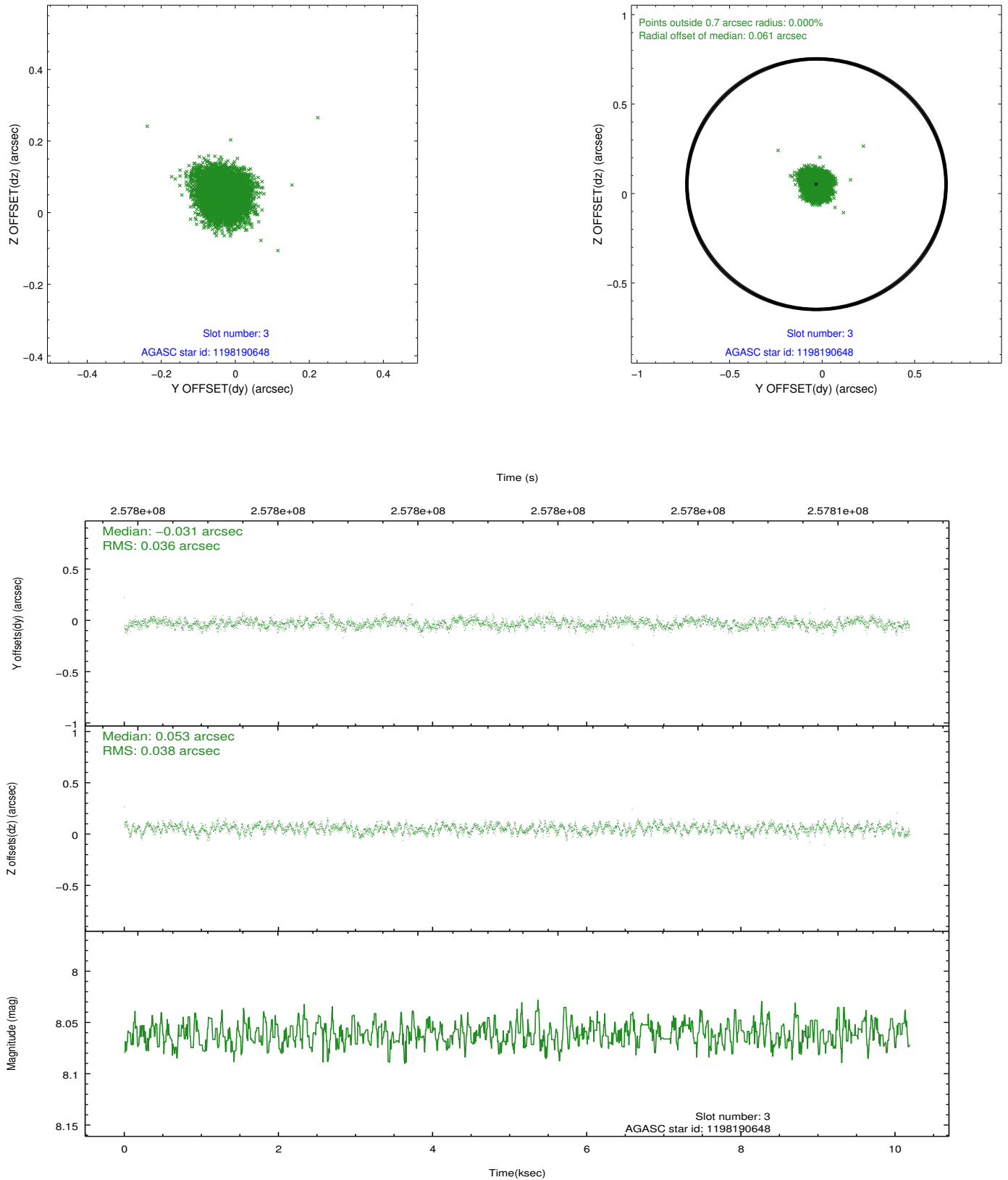


Slot Statistics

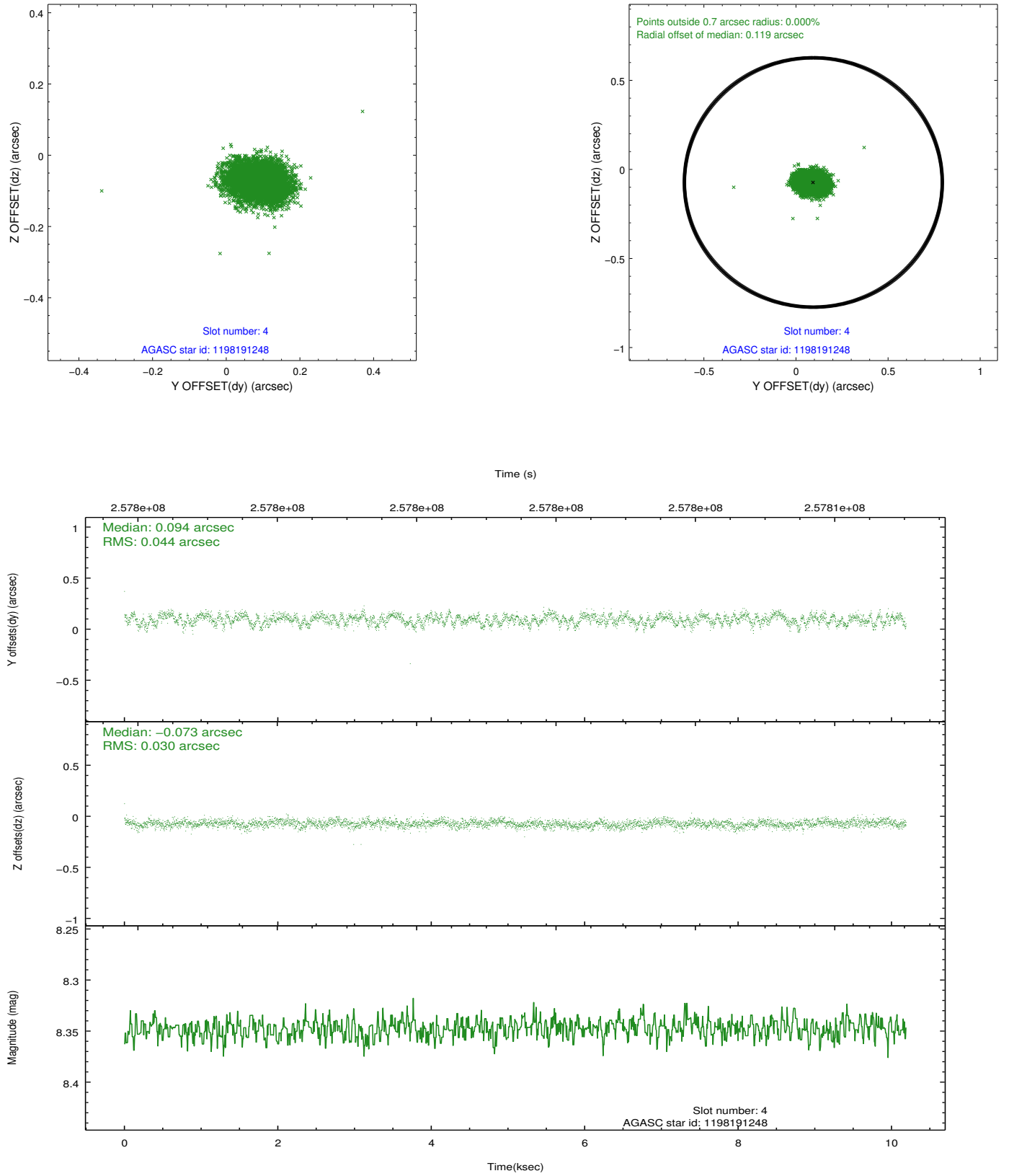
slot	status	id	mag	n_pts	med_dy	med_dz	dr1	dr2	ra	dec	mean_y	mean_z
0	FID	ACIS-I-1	7.24	2485	0.053	-0.012	0.007	0.012	0.000000	0.000000	931.90	-835.85
1	FID	ACIS-I-5	7.22	2485	-0.175	0.070	0.007	0.012	0.000000	0.000000	-1816.10	1061.53
2	FID	ACIS-I-6	7.25	2485	0.031	0.013	0.008	0.012	0.000000	0.000000	396.92	1706.51
3	GUIDE	1198190648	8.06	4971	-0.031	0.053	0.056	0.088	12.344115	-73.478663	1668.19	-663.19
4	GUIDE	1198191248	8.35	4968	0.094	-0.073	0.056	0.091	15.995132	-73.462457	-1532.93	1268.50
5	GUIDE	1198191824	9.38	4968	-0.013	0.041	0.099	0.159	11.519918	-73.478175	2398.69	-1084.71
6	GUIDE	1198192456	8.58	4968	-0.026	-0.050	0.064	0.101	13.422921	-73.869405	1450.28	1103.53
7	GUIDE	1198189696	7.34	4970	-0.024	0.031	0.050	0.080	15.223750	-72.697522	-2373.44	-1475.13

2.4 Star Slots

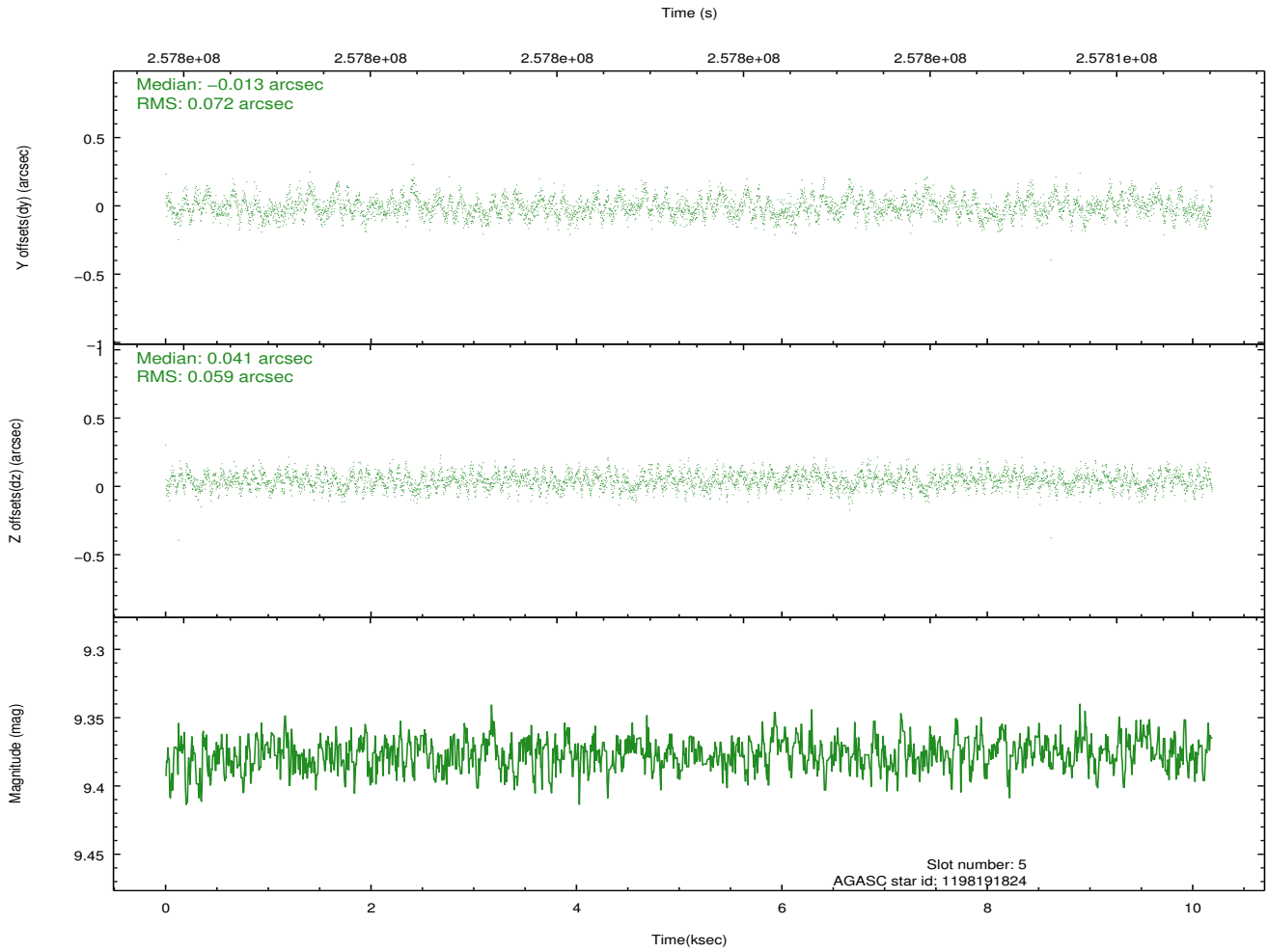
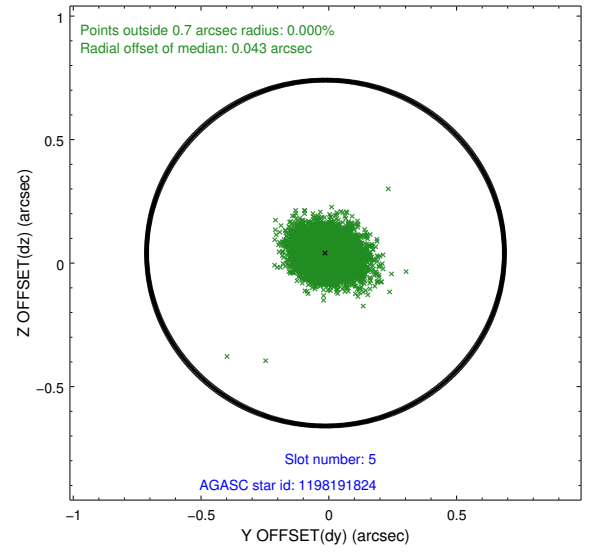
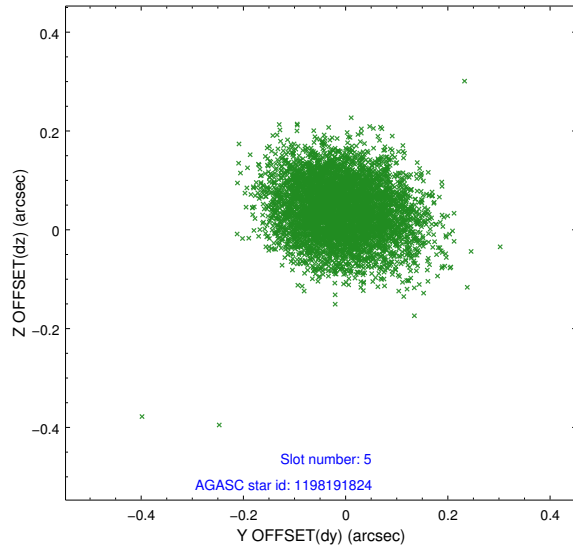
2.4.1 Slot 3



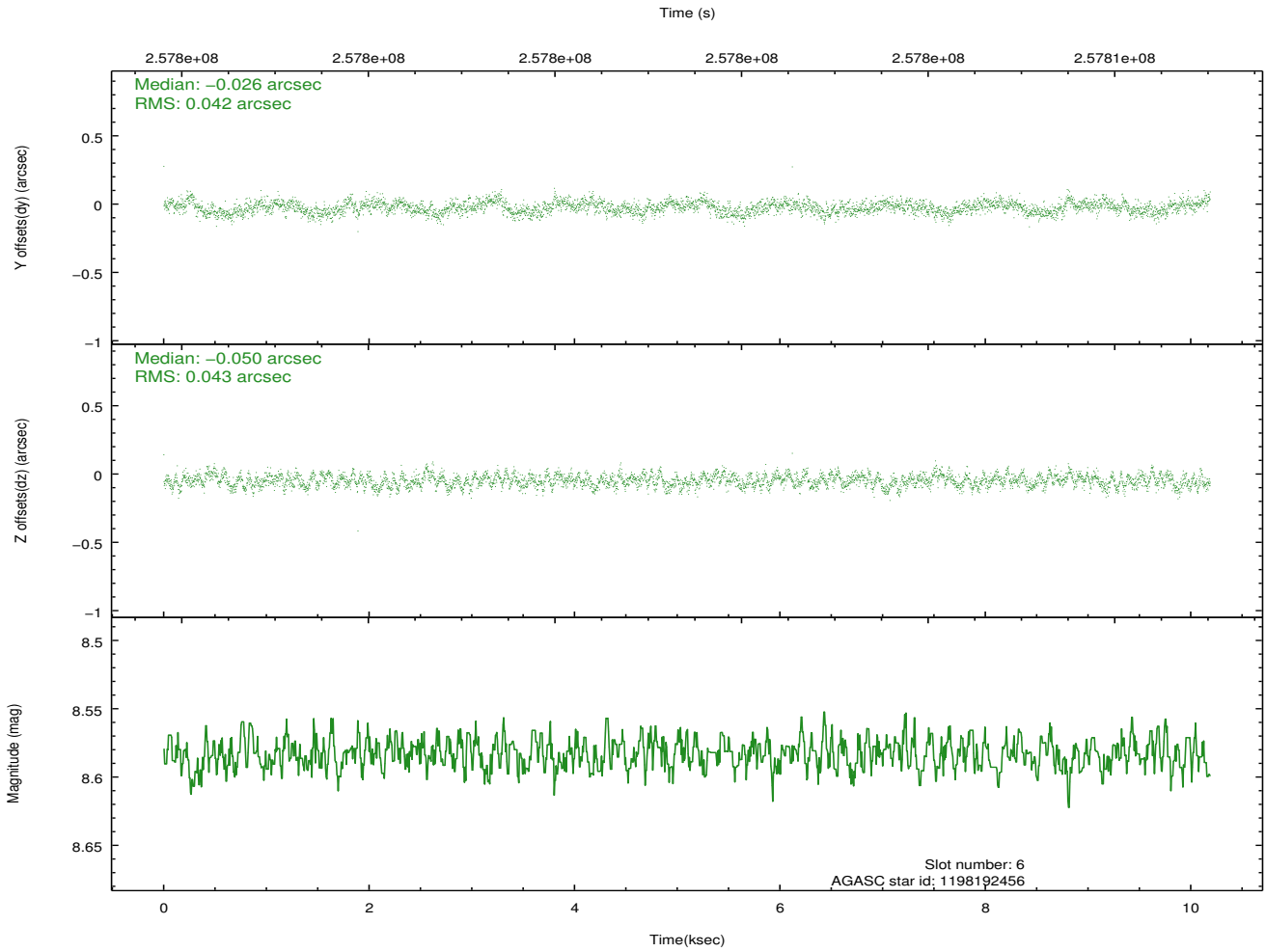
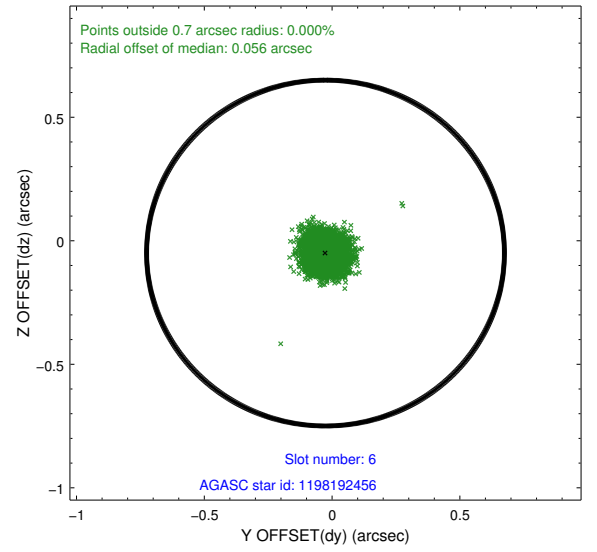
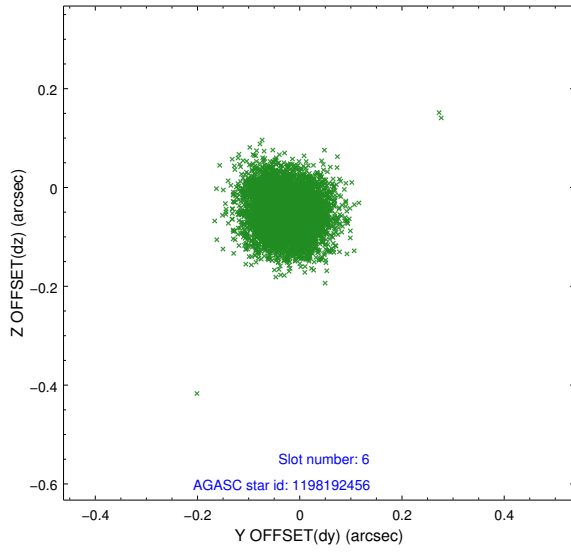
2.4.2 Slot 4



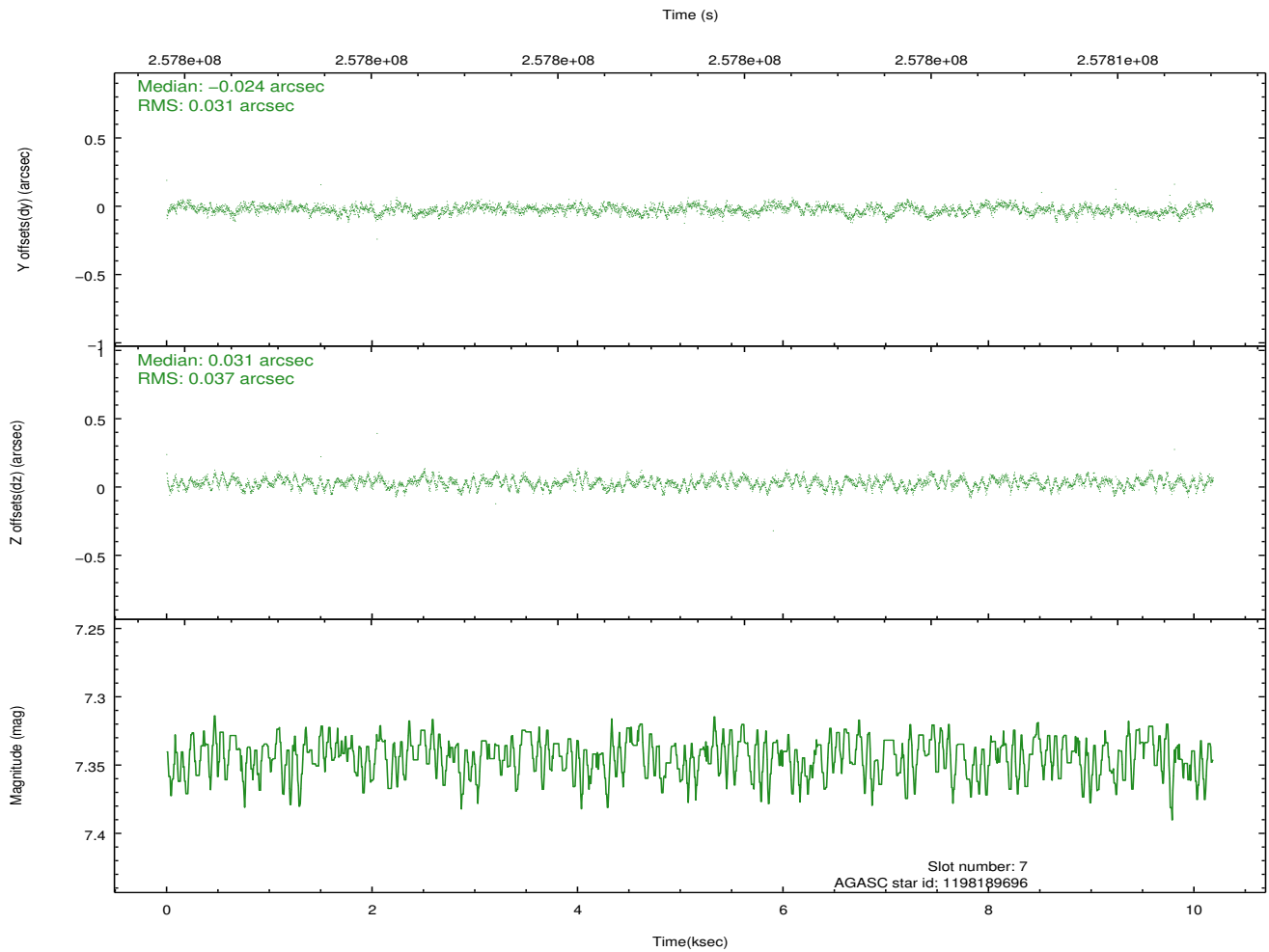
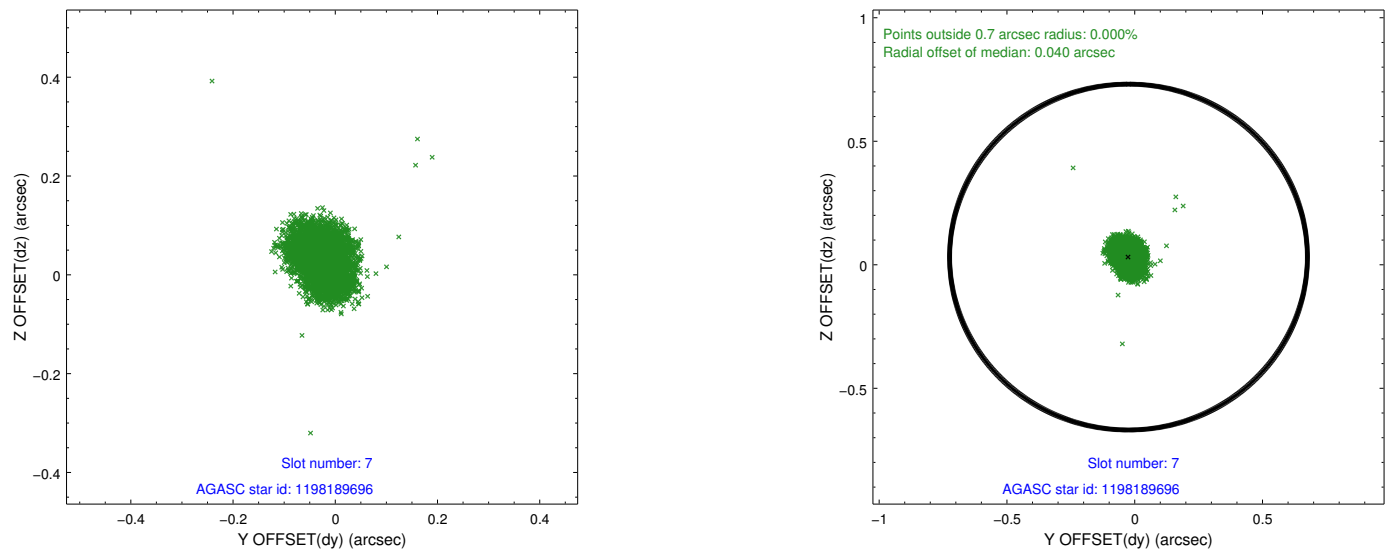
2.4.3 Slot 5



2.4.4 Slot 6

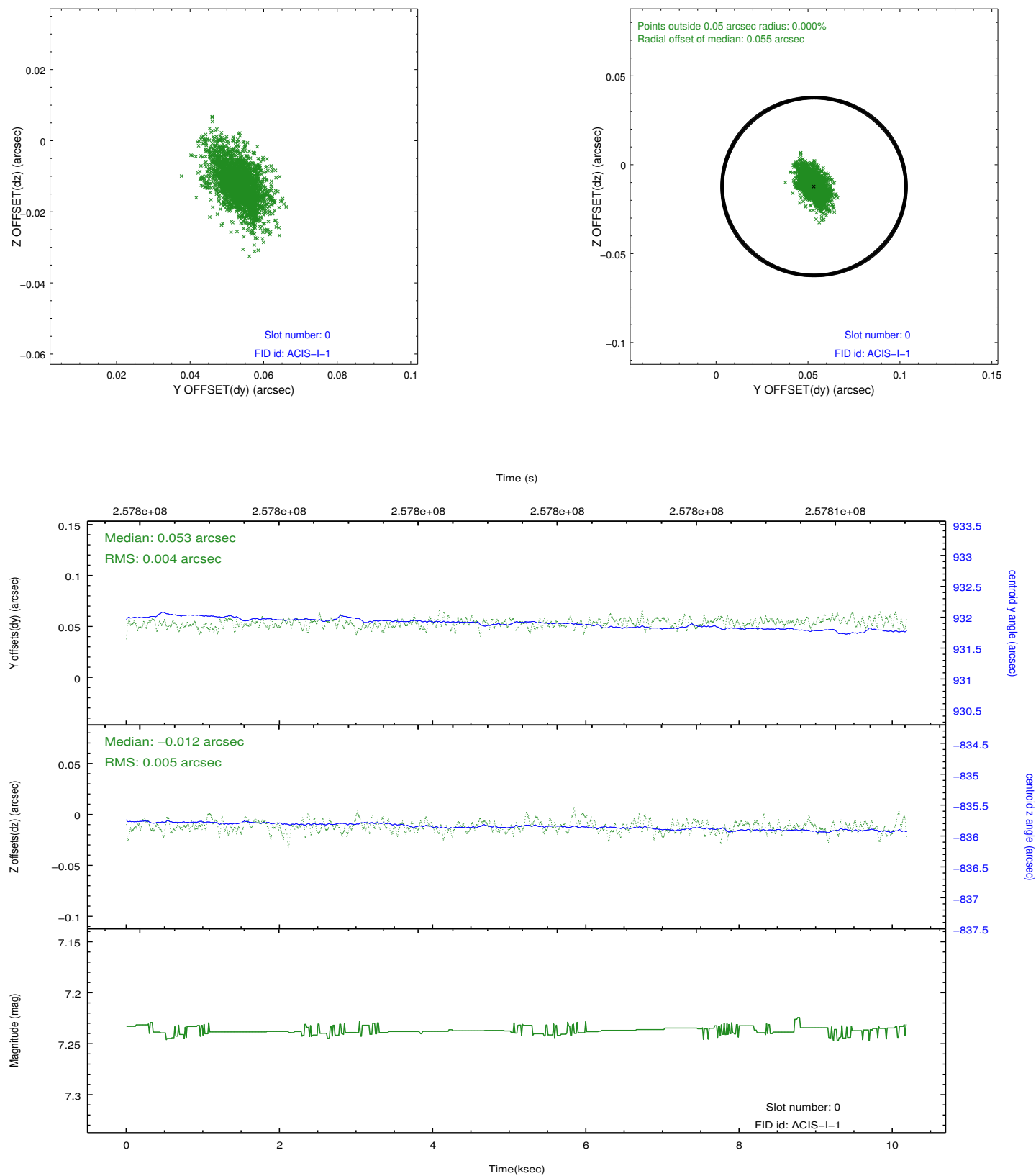


2.4.5 Slot 7

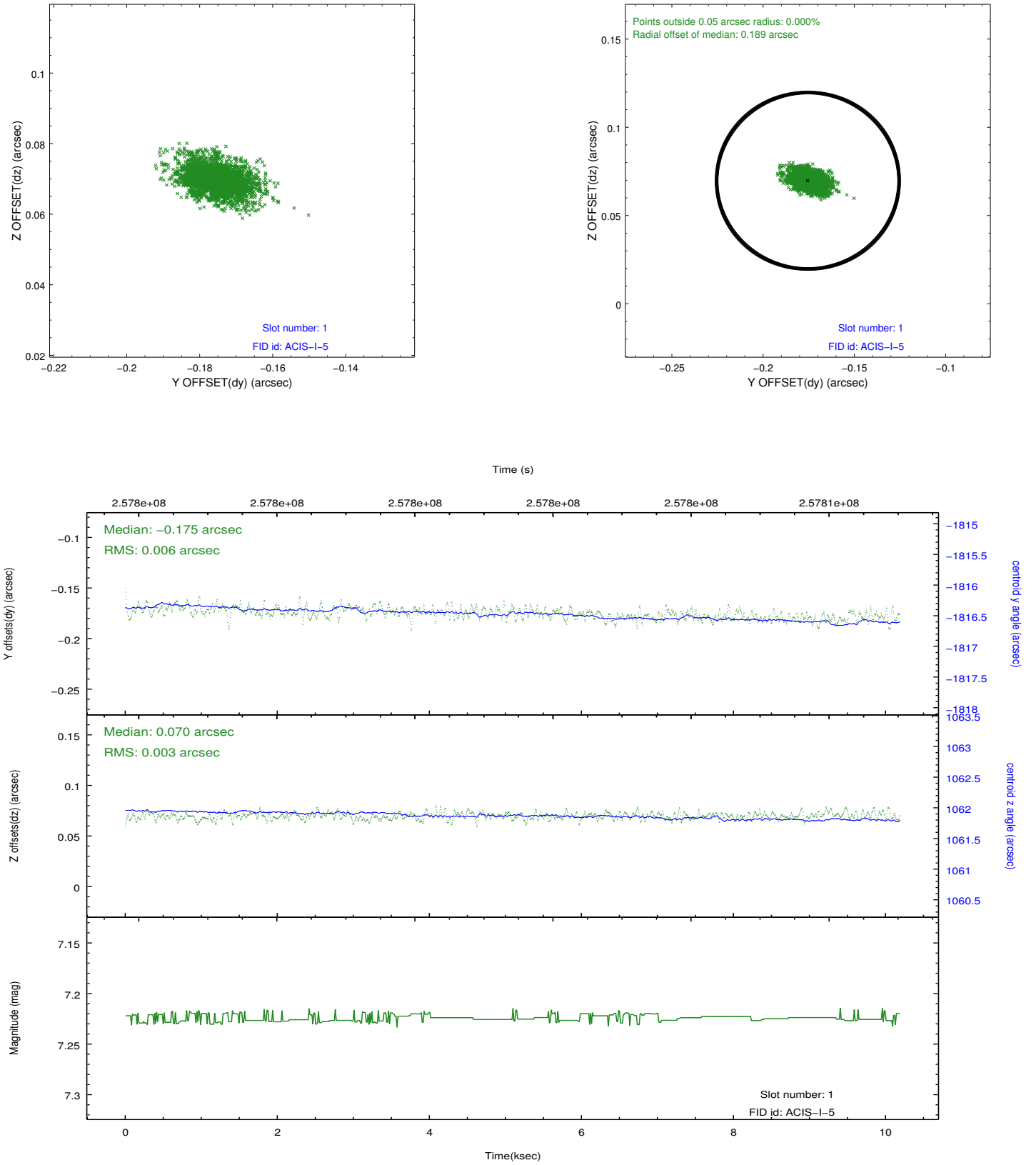


2.5 FID Slots

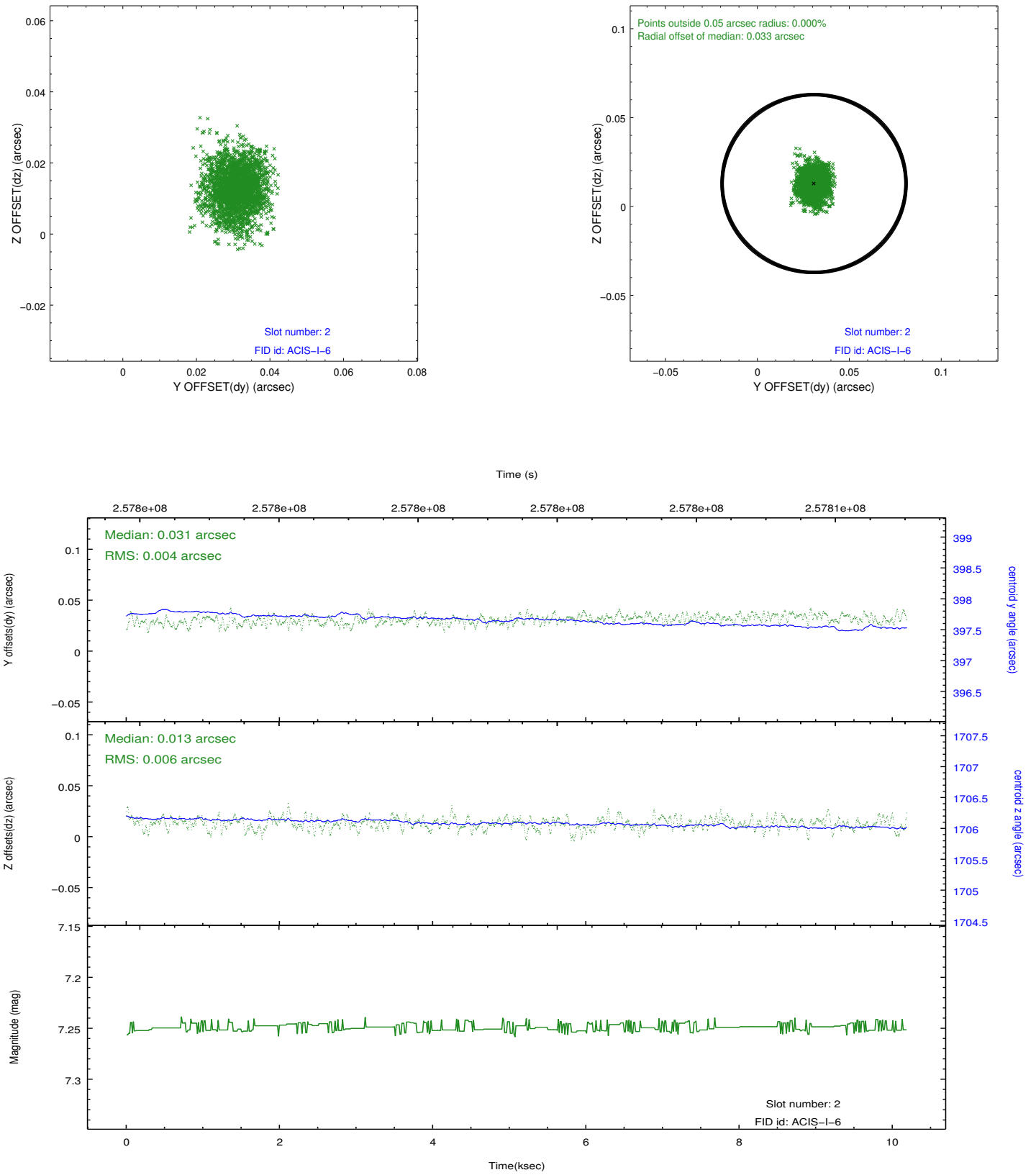
2.5.1 Slot 0



2.5.2 Slot 1



2.5.3 Slot 2



A Summary

A.1 Status

V&V Scientist	Jen Lauer
V&V Date (YYYY-MM-DD)	2012.03.28
V&V Edition	1
V&V Disposition and Status	OK
V&V Charge Time	9.75999996

A.2 Comments