

# V&V Reference Report

## L2 ASCDS Version : 8.4.5

Observation 54269 - L2 Version 1  
Chandra X-Ray Center

L2 Processing Date : Oct 6 2012

## Contents

<b>1</b>	<b>Front</b>	<b>2</b>
<b>2</b>	<b>OBI</b>	<b>3</b>
2.1	OBI . . . . .	3
2.1.1	Images . . . . .	3
2.1.2	Bias . . . . .	3
2.1.3	Parameters . . . . .	4
2.1.4	Events . . . . .	4
2.2	Compared Parameters . . . . .	5
2.3	Star Slots . . . . .	6
2.4	FID Slots . . . . .	6
<b>A</b>	<b>Summary</b>	<b>7</b>
A.1	Status . . . . .	7
A.2	Comments . . . . .	7

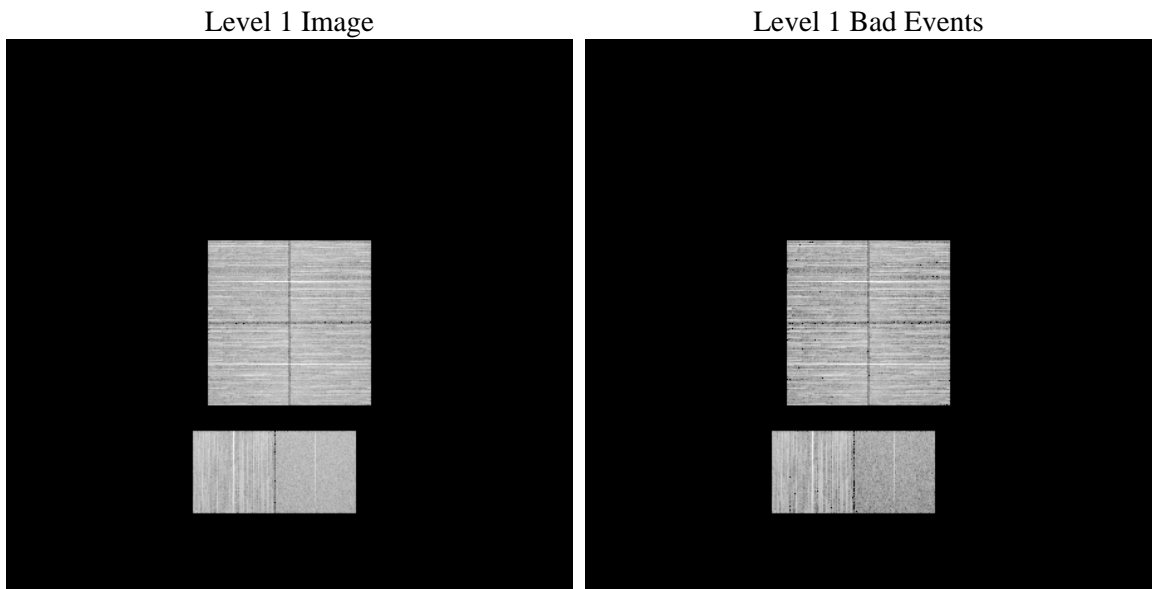
# 1 Front

seq_num	&#160	Sequence number
obs_id	54269	Observation id
title	ACIS-012367 diagnostics	Proposal title
observer	CHANDRA engineering request/realtime commanding	Principal investig
object	&#160	Source name
dtycle	0	&#160
cycle	P	events from which exps? Prim/Second/Both
ra_targ	0.0	Observer's specified target RA [deg]
dec_targ	0.0	Observer's specified target Dec [deg]
ra_nom	350.99979529861	Nominal RA [deg]
dec_nom	19.971297572537	Nominal Dec [deg]
roll_nom	236.8662517456	Nominal Roll [deg]
revision	1	Processing version of data
ontime	5875.1999781728	Sum of GTIs [s]
livetime	5800.8046584284	Livetime [s]
ontime0	5875.1999781728	Sum of GTIs [s]
ontime1	5875.1999781728	Sum of GTIs [s]
ontime2	5875.1999781728	Sum of GTIs [s]
ontime3	5875.1999781728	Sum of GTIs [s]
ontime6	5875.1999781728	Sum of GTIs [s]
ontime7	5875.1999781728	Sum of GTIs [s]
l2events	169163	Number of level 2 events

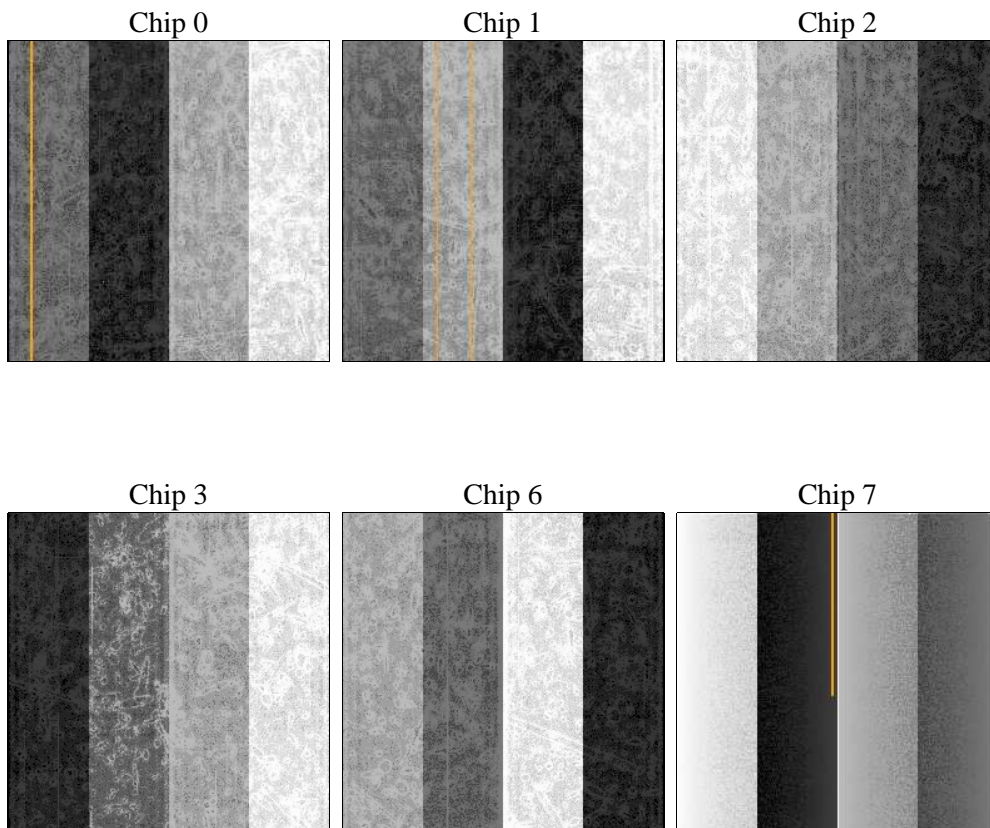
## 2 OBI

### 2.1 OBI

#### 2.1.1 Images



#### 2.1.2 Bias



### 2.1.3 Parameters

obi_num	0	Obi number	sched_exp_time	0.0	[s] Scheduled observation exposure time
ascdsver	8.4.5	Processing system revision	ontime	5875.1999781728	Sum of GTIs [s]
caldsver	4.5.2	&#160	ontime0	5875.1999781728	Sum of GTIs [s]
date	2012-10-06T22:08:46	Date and time of file creation	ontime1	5875.1999781728	Sum of GTIs [s]
revision	1	Processing version of data	ontime2	5875.1999781728	Sum of GTIs [s]
			ontime3	5875.1999781728	Sum of GTIs [s]
			ontime6	5875.1999781728	Sum of GTIs [s]
			ontime7	5875.1999781728	Sum of GTIs [s]
			l1events	690212	Number of level 1 events

### 2.1.4 Events

	ccd 0	ccd 1	ccd 2	ccd 3	ccd 6	ccd 7		ccd 0	ccd 1	ccd 2	ccd 3	ccd 6	ccd 7
level 1 events	110659	122059	121346	119629	119856	96663	grade 0 events	13421	13333	13931	13880	13749	6890
rejected events	84634	95427	94818	93178	92495	50543		12%	10%	11%	11%	11%	7%
rejected %	76%	78%	78%	77%	77%	52%	grade 1 events	65	49	92	98	61	72
								0%	0%	0%	0%	0%	0%
							grade 2 events	5048	5356	4973	4956	5420	11277
								4%	4%	4%	4%	4%	11%
							grade 3 events	1751	1753	1815	1850	1825	3801
								1%	1%	1%	1%	1%	3%
							grade 4 events	1717	1763	1890	1858	1706	3842
								1%	1%	1%	1%	1%	3%
							grade 5 events	2144	2179	2120	2368	2276	5640
								1%	1%	1%	1%	1%	5%
							grade 6 events	4105	4434	3930	3918	4679	20344
								3%	3%	3%	3%	3%	21%
							grade 7 events	82408	93192	92595	90701	90140	44797
								74%	76%	76%	75%	75%	46%

## 2.2 Compared Parameters

Parameter	Planned	Actual	Parameter	Planned	Actual
Instrument	ACIS	ACIS	Obspar format version number	7	7
Detector	ACIS-012367	ACIS-012367	Obspar file type	PREDICTED	ACTUAL
Grating	NONE	NONE	Obspar update status	NONE	UPDATED
Data mode	FAINT	FAINT	Number of optional ACIS chips dropped	0	0
Observation mode	SECONDARY	SECONDARY	On-chip summing requested	N	N
[deg] Pointing RA	0	350.9997952986129	Subarray requested	NONE	NONE
[deg] Pointing Dec	0	19.97129757253659	Alternating exposures requested	N	N
[deg] Pointing Roll	0.0	236.866251745601	[s] Primary exposure time	3.2	3.2
[mm] SIM focus pos	-1.429586	-1.428180813131781			
[mm] SIM defocus	0.1037507710433287	0.1051558262725154			
[mm] SIM translation stage pos	250.455976	250.466033080201			
[mm] SIM translation stage offset	0	-0.01005468664627074			
[s] Observation start time (MET)	465878505.725082	465878504.70008			
Observation start date	2012-10-06T02:41:46	2012-10-06T02:41:44			
[s] Observation end time (MET)	465886273.175499	465886272.1505			
Observation end date	2012-10-06T04:51:13	2012-10-06T04:51:12			
Read mode	TIMED	TIMED			

## 2.3 Star Slots

## 2.4 FID Slots

## A Summary

### A.1 Status

V&V Scientist	Joy Nichols
V&V Date (YYYY-MM-DD)	2012.10.09
V&V Edition	1
V&V Disposition and Status	OK
V&V Charge Time	5.8751999781728

### A.2 Comments