

# V&V Reference Report

## L2 ASCDS Version : 7.6.7.1

Observation 5369 - L2 Version 002  
Chandra X-Ray Center

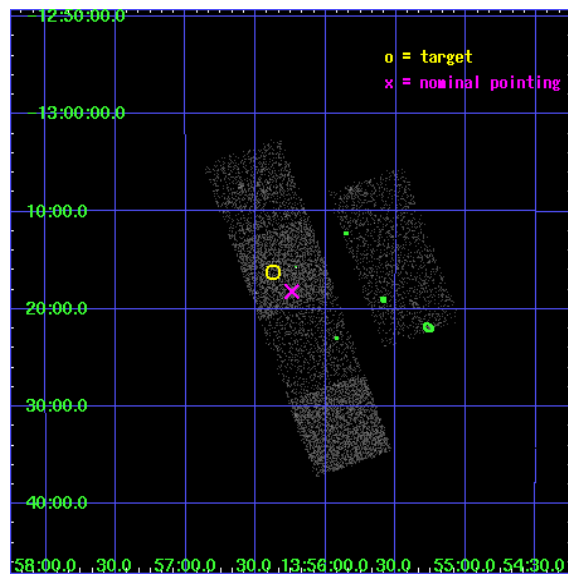
L2 Processing Date : Mar 14 2006

## Contents

<b>1</b>	<b>Front</b>	<b>2</b>
<b>2</b>	<b>OBI</b>	<b>3</b>
2.1	OBI . . . . .	3
2.1.1	Images . . . . .	3
2.1.2	Bias . . . . .	3
2.1.3	Parameters . . . . .	4
2.1.4	Events . . . . .	4
2.2	Compared Parameters . . . . .	5
2.3	Aspect . . . . .	6
2.4	Star Slots . . . . .	9
2.4.1	Slot 3 . . . . .	9
2.4.2	Slot 4 . . . . .	10
2.4.3	Slot 5 . . . . .	11
2.4.4	Slot 6 . . . . .	12
2.4.5	Slot 7 . . . . .	13
2.5	FID Slots . . . . .	14
2.5.1	Slot 0 . . . . .	14
2.5.2	Slot 1 . . . . .	15
2.5.3	Slot 2 . . . . .	16
<b>3</b>	<b>Point Sources</b>	<b>17</b>
<b>A</b>	<b>Summary</b>	<b>18</b>
A.1	Status . . . . .	18
A.2	Comments . . . . .	18

# 1 Front

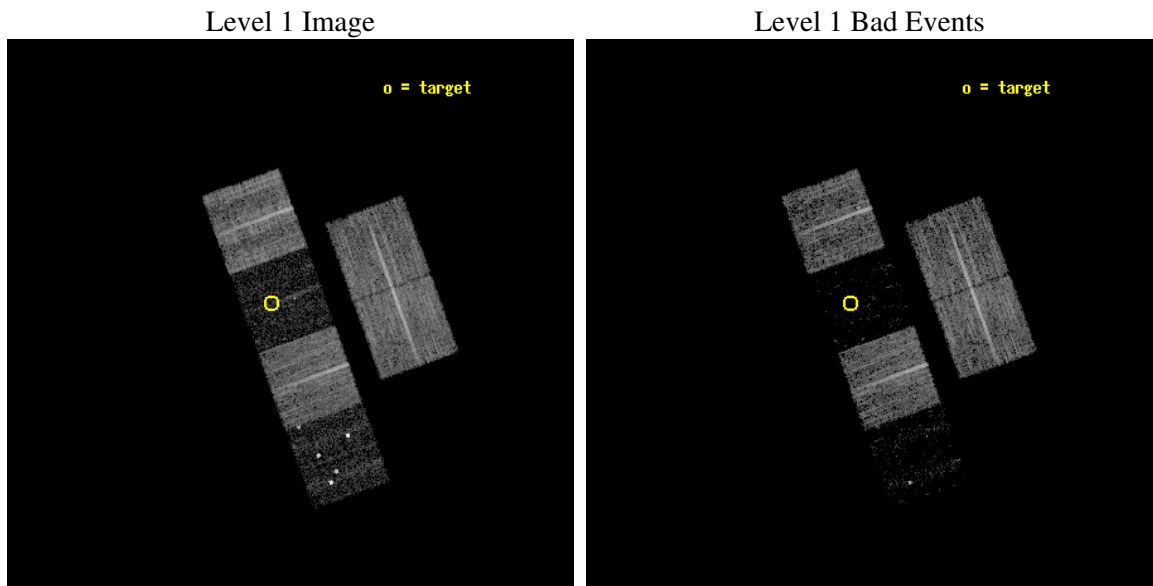
seq_num	100057
obs_id	5369
title	Comet 9P/Tempel 1 During the Deep Impact Encounter
observer	Dr. Carey Lisse
object	9P/Tempel 1
dtcycle	0
cycle	P
ra_targ	209.09316
dec_targ	-13.269715
ra_nom	209.06037212884
dec_nom	-13.303722108717
roll_nom	250.05888537283
revision	2
ontime	8287.9999691248
livetime	8183.0523230813
ontime2	8287.9999691248
ontime3	8287.9999691248
ontime5	8287.9999691248
ontime6	8287.9999691248
ontime7	8287.9999691248
ontime8	8287.9999691248
l2events	11385



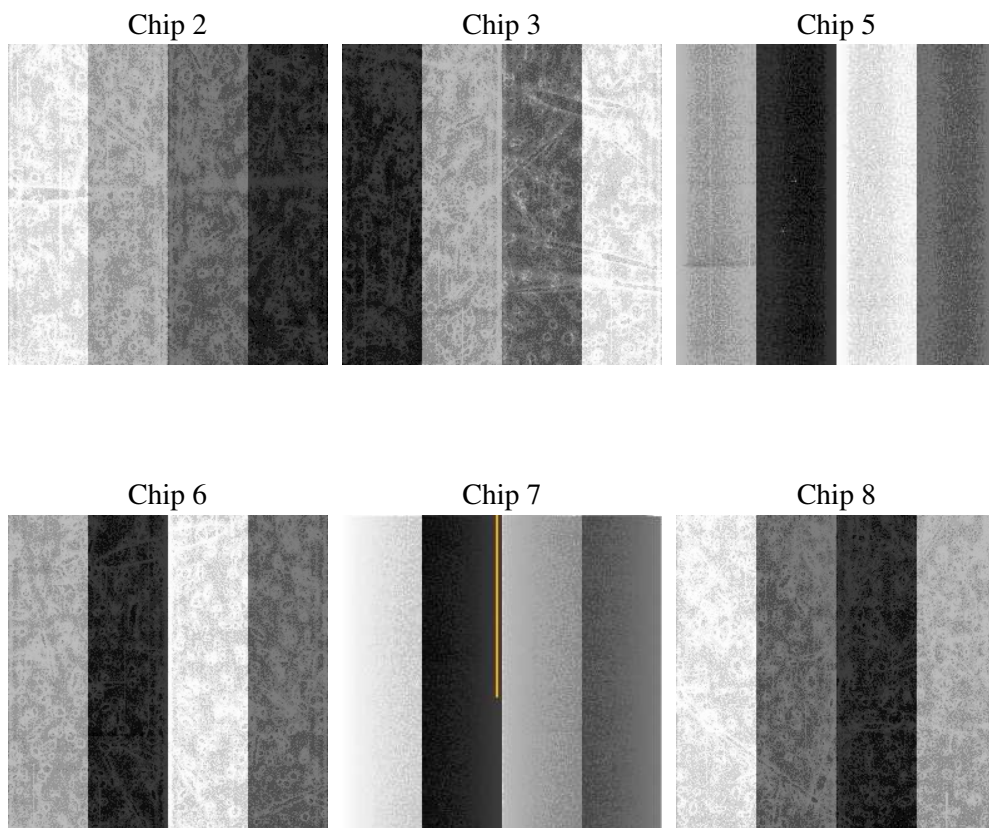
## 2 OBI

### 2.1 OBI

#### 2.1.1 Images



#### 2.1.2 Bias



### 2.1.3 Parameters

obi_num	1
ascdsver	7.6.7.1
caldbver	3.2.1
date	2006-03-14T15:10:32
revision	2

sched_exp_time	8325.000000
ontime	8420.1342254281
ontime2	8420.1342055202
ontime3	8420.1342055202
ontime5	8420.1342254281
ontime6	8420.1342254281
ontime7	8420.1342254281
ontime8	8420.1342254281
l1events	165626

### 2.1.4 Events

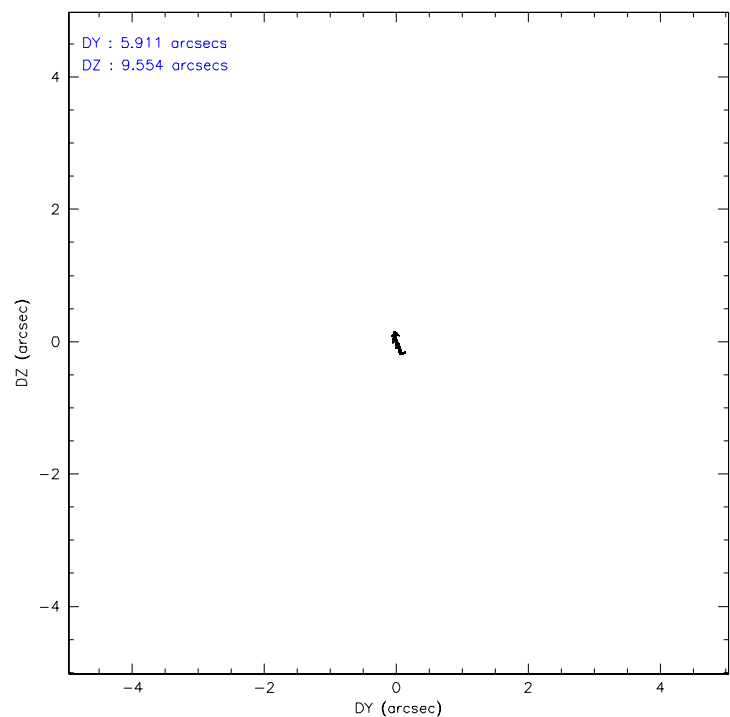
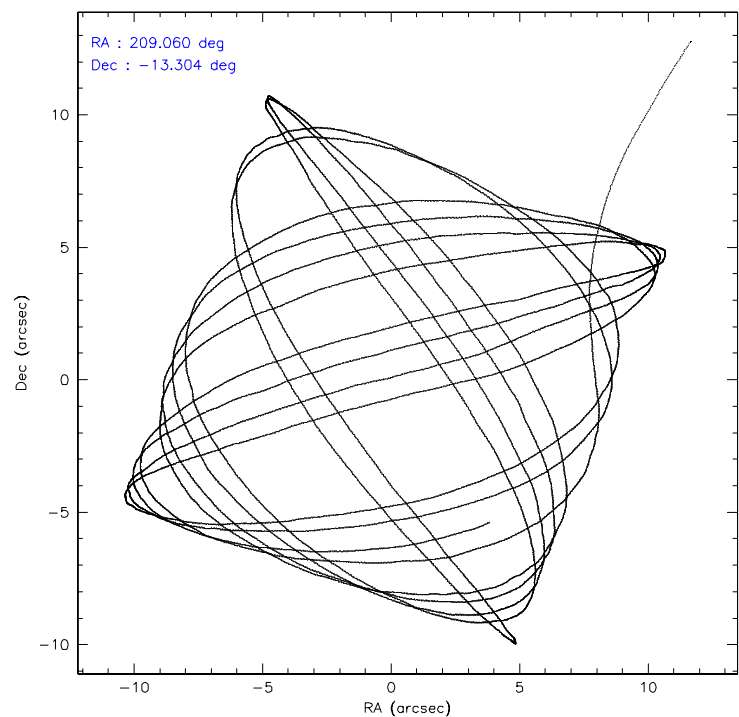
	ccd 2	ccd 3	ccd 5	ccd 6	ccd 7	ccd 8
level 1 events	39323	33966	12620	34612	4774	40331
rejected events	37624	32707	2190	33062	1020	30108
rejected %	95%	96%	17%	95%	21%	74%

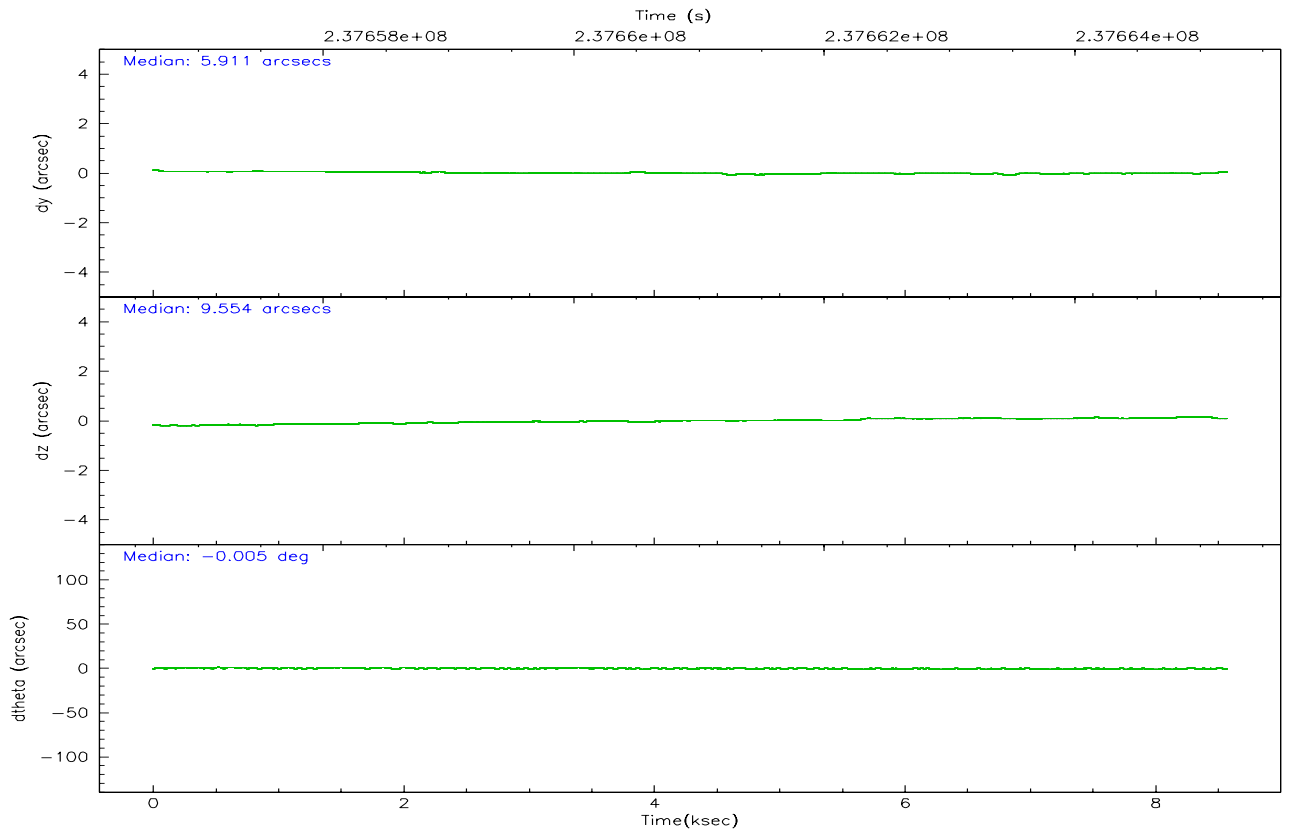
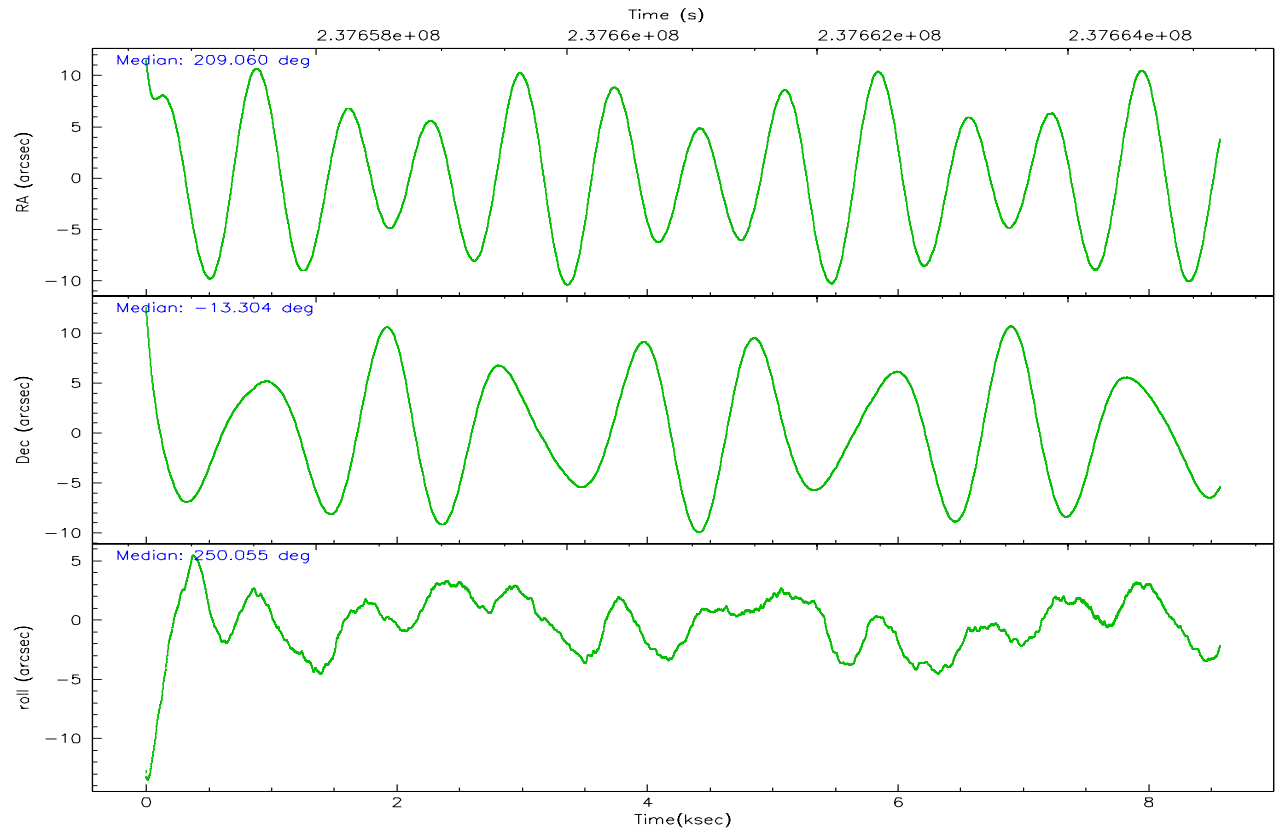
	ccd 2	ccd 3	ccd 5	ccd 6	ccd 7	ccd 8
grade 0 events	727	614	5429	770	989	2908
	1%	1%	43%	2%	20%	7%
grade 1 events	5	7	259	5	14	19
	0%	0%	2%	0%	0%	0%
grade 2 events	379	158	3434	262	1226	2303
	0%	0%	27%	0%	25%	5%
grade 3 events	211	210	581	235	547	1193
	0%	0%	4%	0%	11%	2%
grade 4 events	248	178	589	213	536	1126
	0%	0%	4%	0%	11%	2%
grade 5 events	33	34	333	18	109	225
	0%	0%	2%	0%	2%	0%
grade 6 events	168	120	538	99	524	2804
	0%	0%	4%	0%	10%	6%
grade 7 events	37552	32645	1457	33010	829	29753
	95%	96%	11%	95%	17%	73%

## 2.2 Compared Parameters

Parameter	Planned	Actual	Parameter	Planned	Actual
Instrument	ACIS	ACIS	Obspar format version number	6	6
Detector	ACIS-235678	ACIS-235678	Obspar file type	PREDICTED	ACTUAL
Grating	NONE	NONE	Obspar update status	NONE	UPDATED
Data mode	VFAINT	VFAINT	On-chip summing requested	N	N
Observation mode	POINTING	POINTING	Subarray requested	NONE	NONE
Pointing RA	209.055101	209.0603721288381	Alternating exposures requested	N	N
Pointing Dec	-13.276940	-13.30372210871672	Primary exposure time	0.000000	3.2
Pointing Roll	249.901052	250.0588853728255			
Window start time	237708064.184000	237708064.184000			
Window stop time	237751264.184000	237751264.184000			
SIM focus pos (mm)	-0.684267	-0.6828225247311905			
SIM defocus (mm)	0	0.001444936568705701			
SIM translation stage pos (mm)	-190.132523	-190.1400660498719			
SIM translation stage offset (mm)	0	0.00754346686406393			
Observation start time	237656885.184000	237655890.20944			
Observation start date	2005-07-13T15:47:01	2005-07-13T15:31:30			
Observation end time	237665210.184000	237665343.78487			
Observation end date	2005-07-13T18:05:46	2005-07-13T18:09:03			
Read mode	TIMED	TIMED			

## 2.3 Aspect





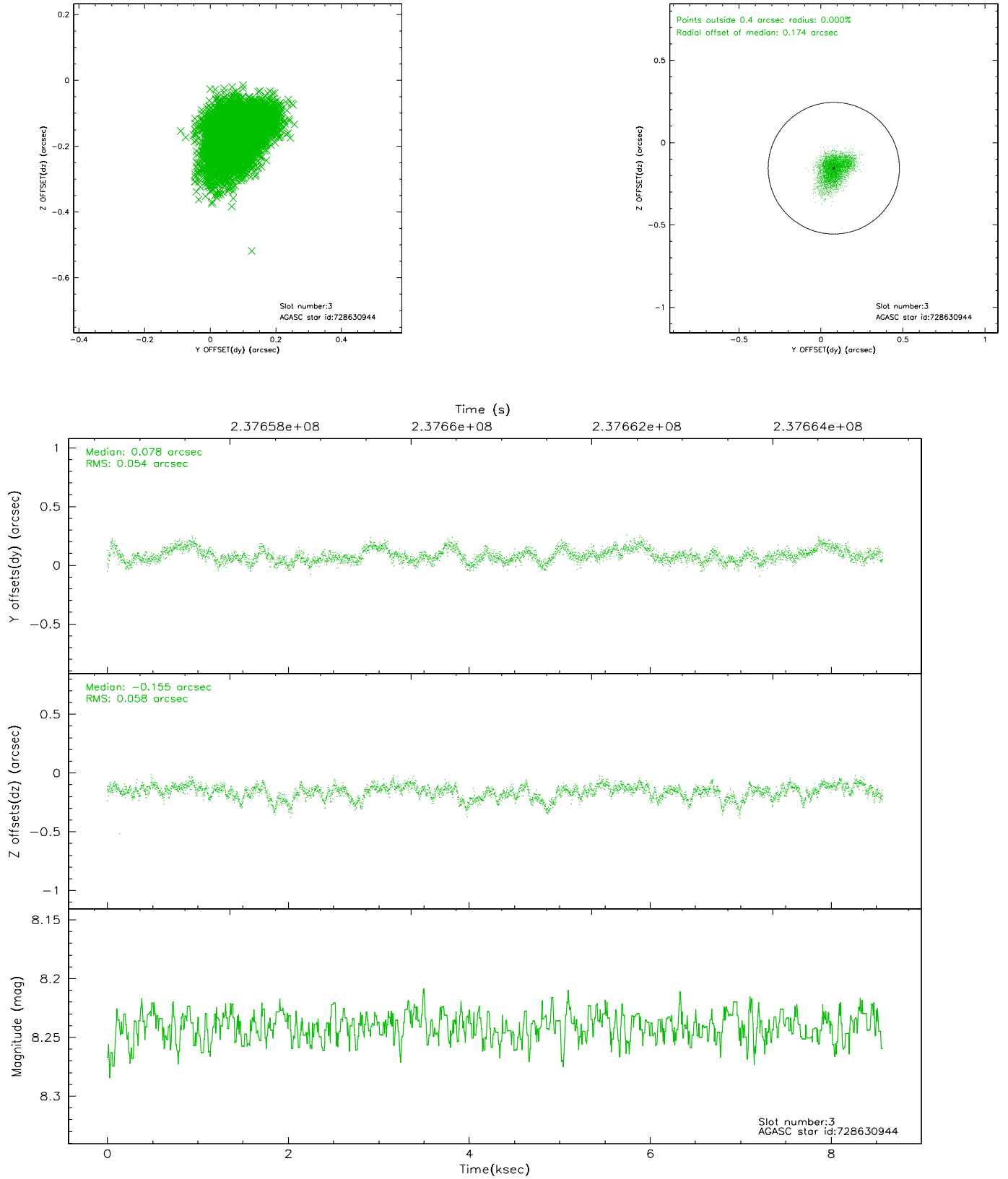
### Slot Statistics

slot	status	id	mag	n_pts	med_dy	med_dz	dr1	dr2	ra	dec	mean_y	mean_z
0	FID	ACIS-S-2	7.10	2091	-0.055	-0.014	0.008	0.012	0.000000	0.000000	-758.68	-1730.80
1	FID	ACIS-S-4	7.21	2091	0.066	0.030	0.008	0.014	0.000000	0.000000	2154.41	177.09
2	FID	ACIS-S-5	7.23	2091	-0.043	-0.007	0.007	0.012	0.000000	0.000000	-1810.70	171.41
3	GUIDE	728630944	8.24	4182	0.078	-0.155	0.084	0.139	208.923207	-13.740319	1725.48	140.28
4	GUIDE	728631464	11.09	4180	0.026	0.044	0.305	0.471	208.876674	-12.686242	-1780.91	-1319.23
5	GUIDE	728638600	9.40	4180	-0.077	-0.082	0.104	0.167	209.320543	-13.467304	324.22	1108.00
6	GUIDE	728639032	9.16	4180	0.201	0.239	0.105	0.170	209.196450	-13.877558	1861.39	1207.66
7	GUIDE	728639792	9.83	4174	-0.231	-0.019	0.162	0.270	209.293230	-12.690895	-2267.98	60.62

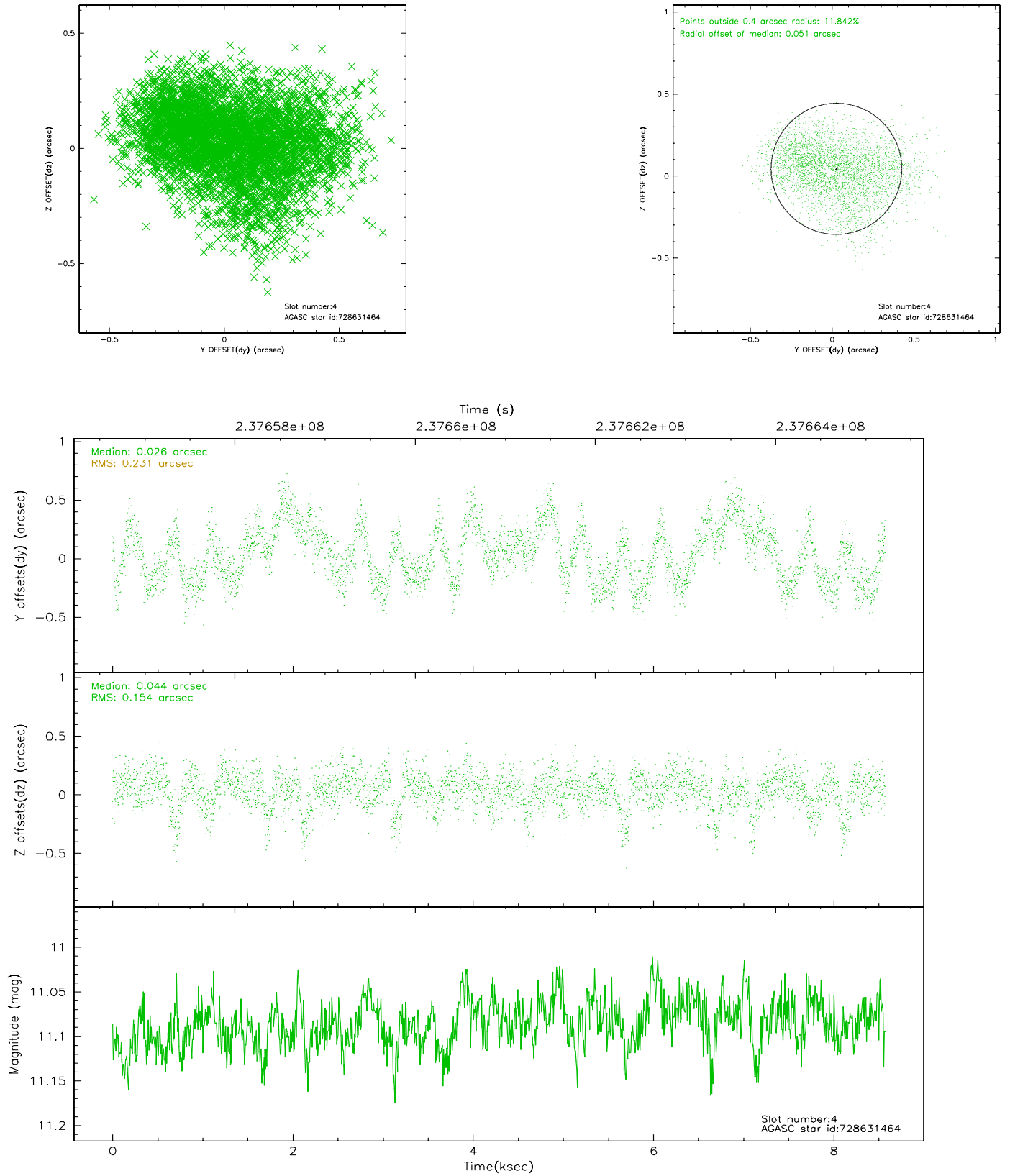


## 2.4 Star Slots

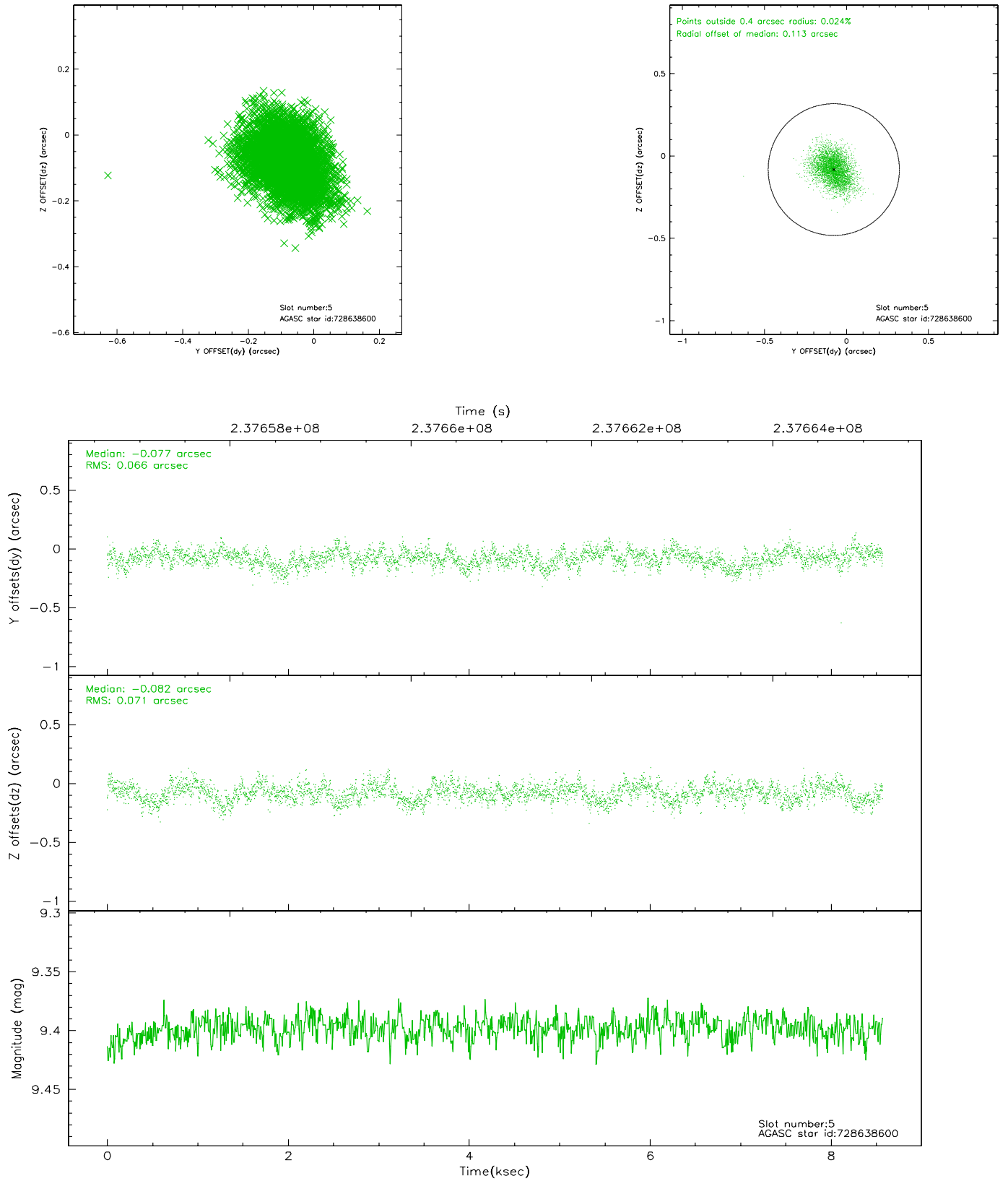
### 2.4.1 Slot 3



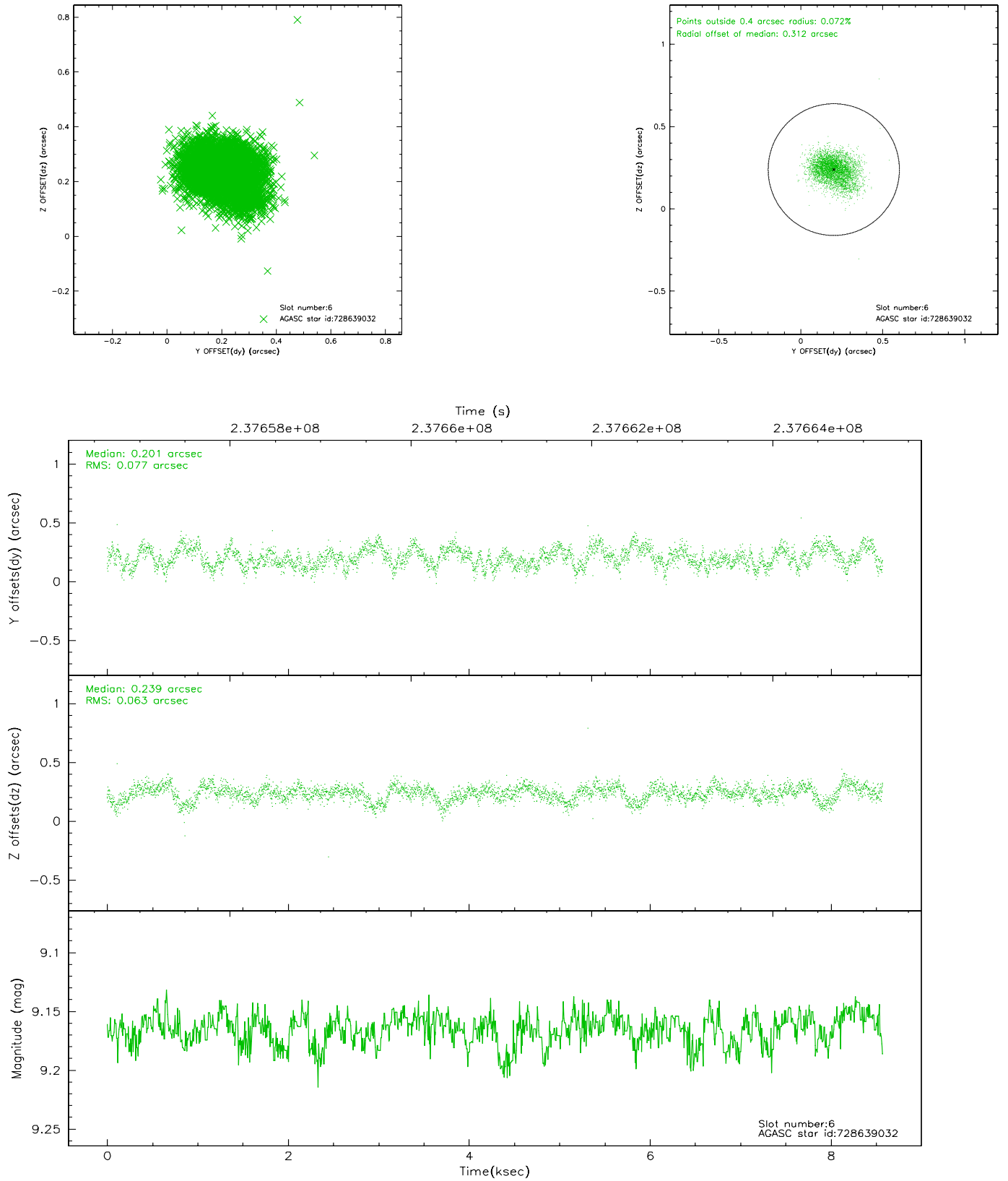
## 2.4.2 Slot 4



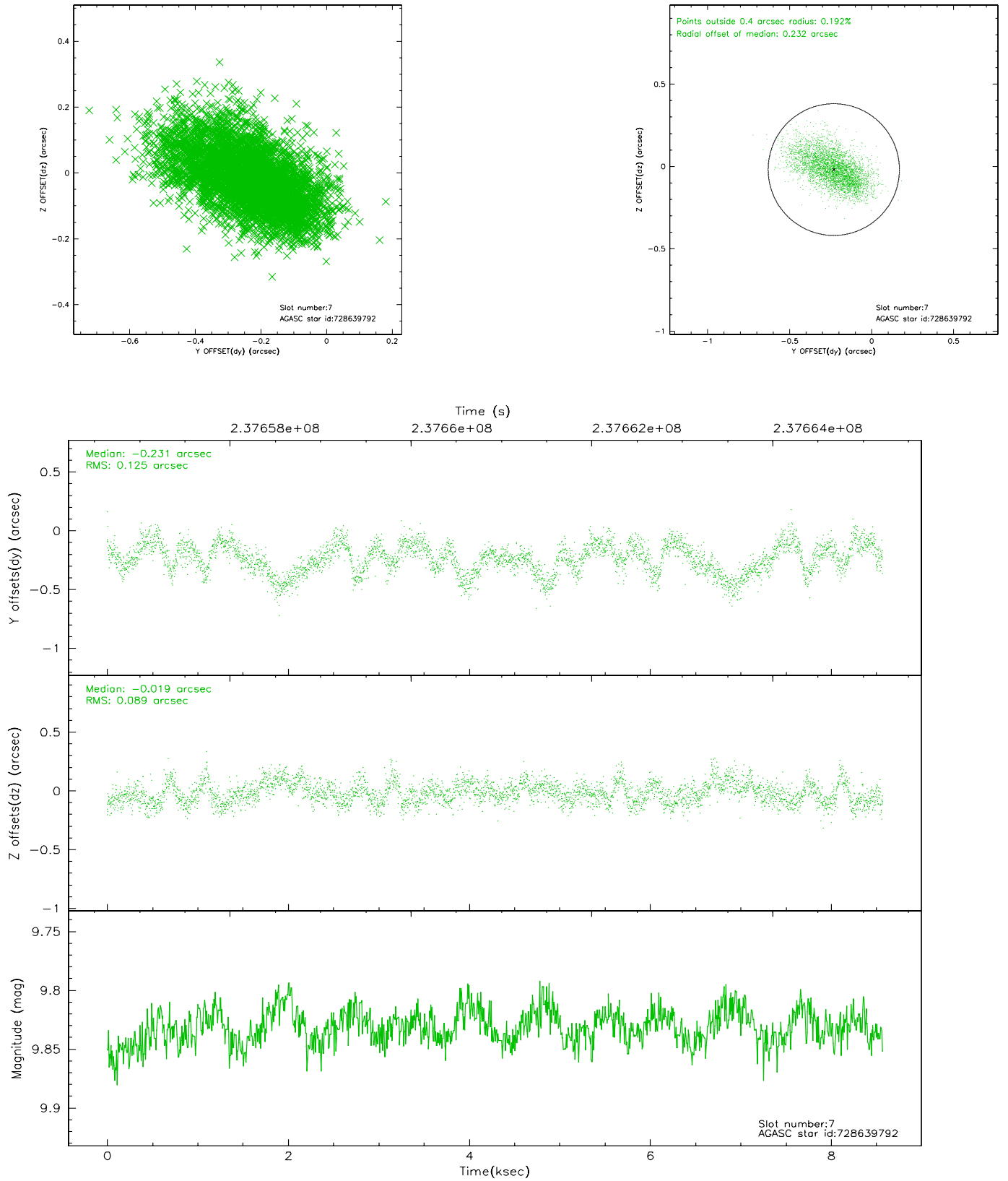
### 2.4.3 Slot 5



## 2.4.4 Slot 6

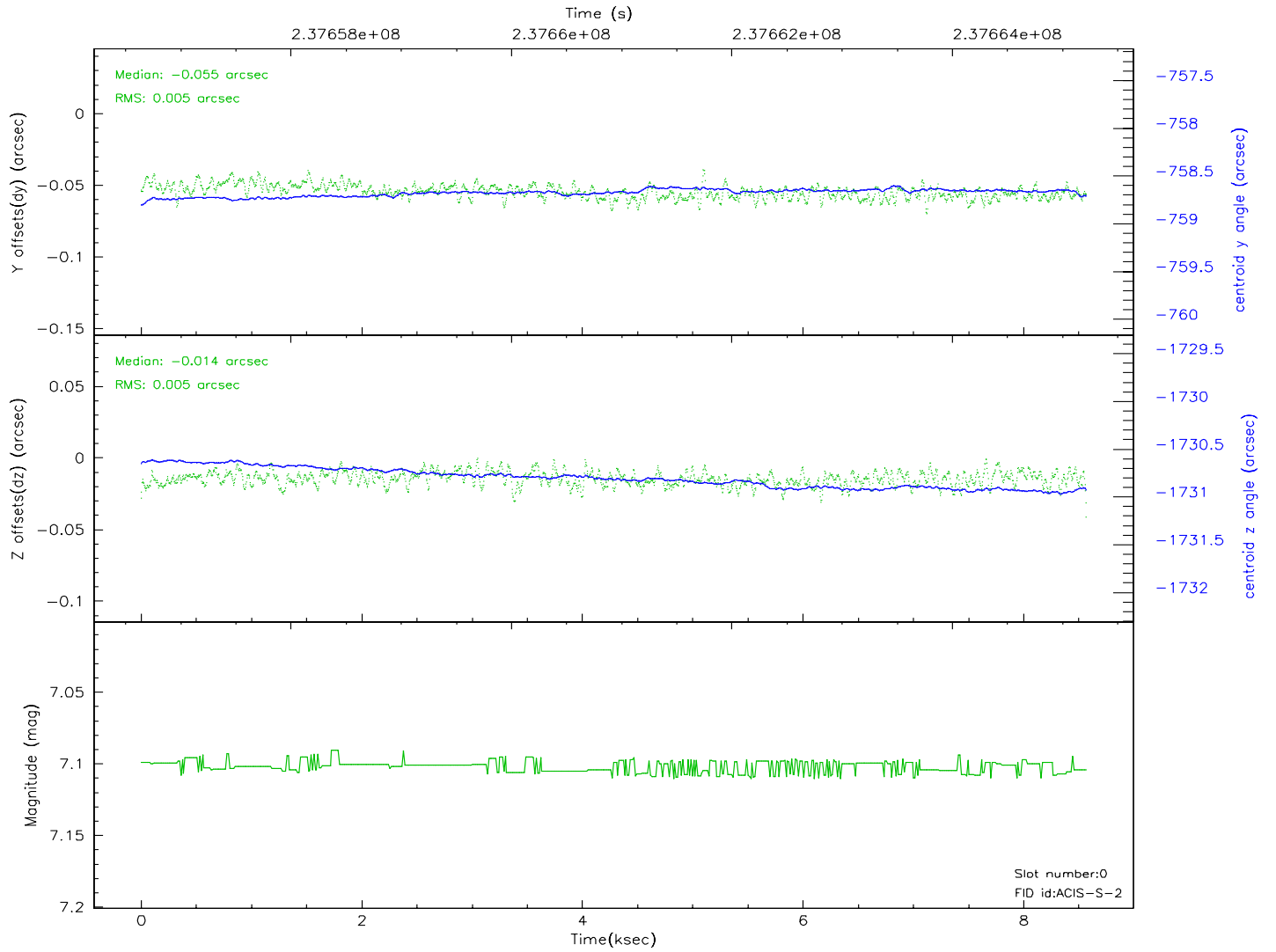
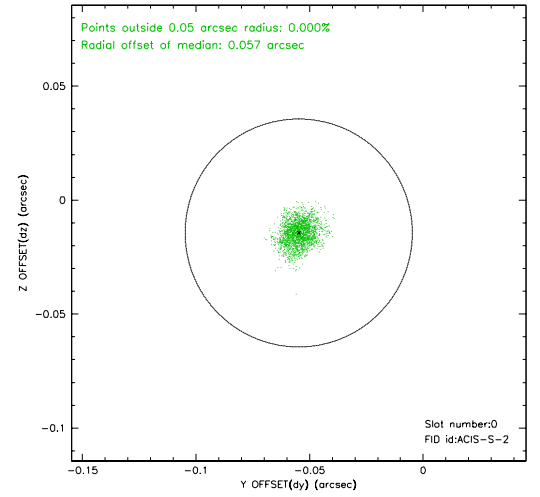
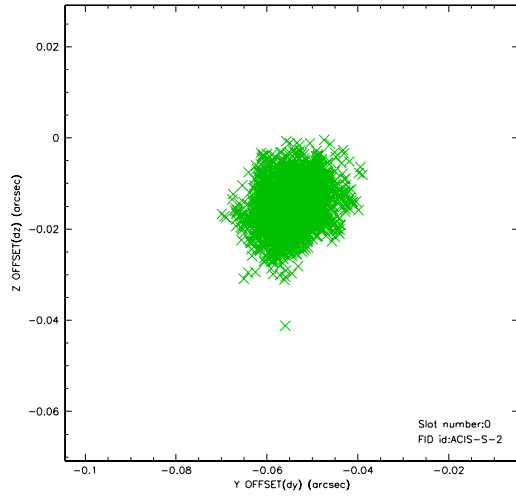


## 2.4.5 Slot 7

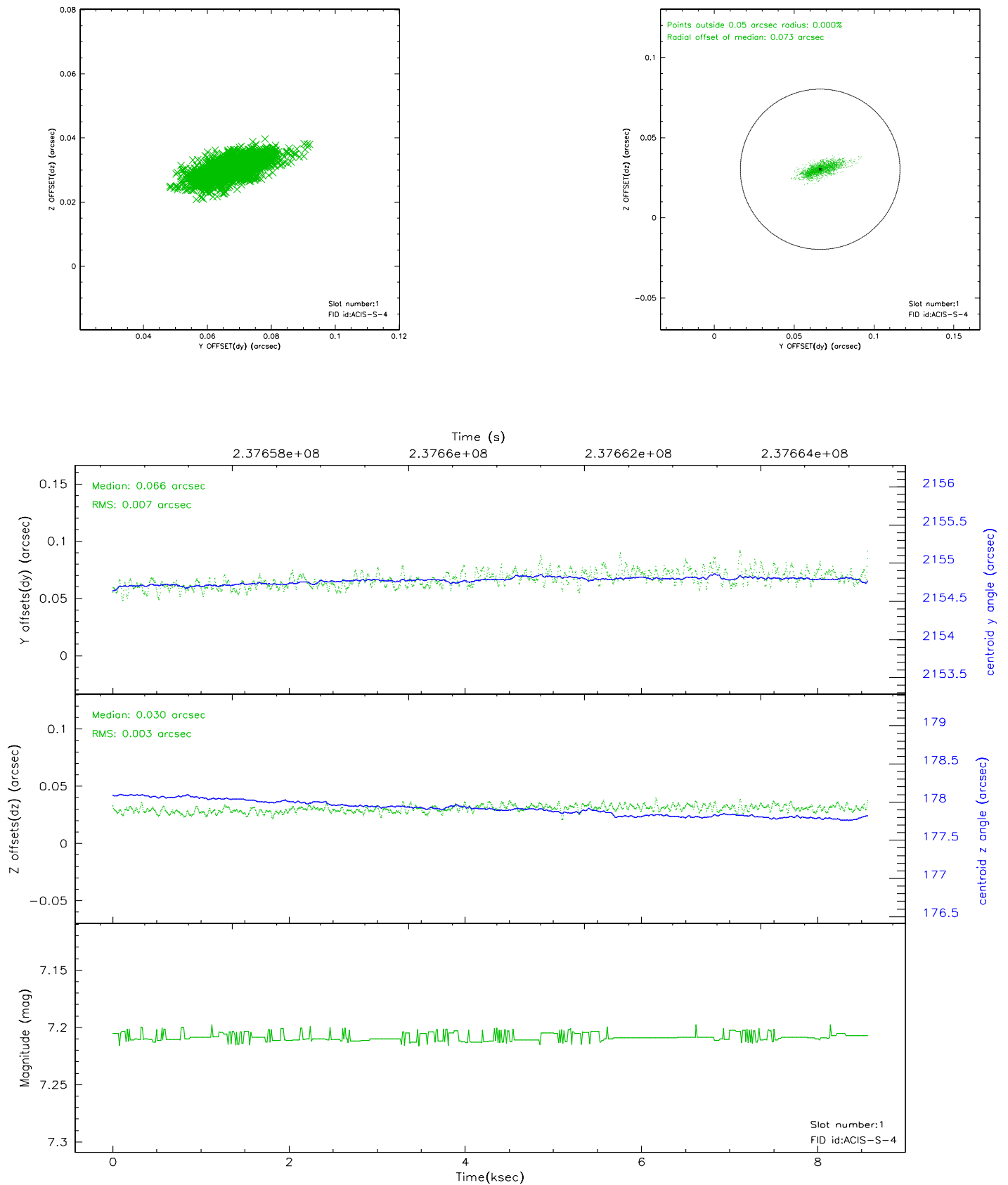


## 2.5 FID Slots

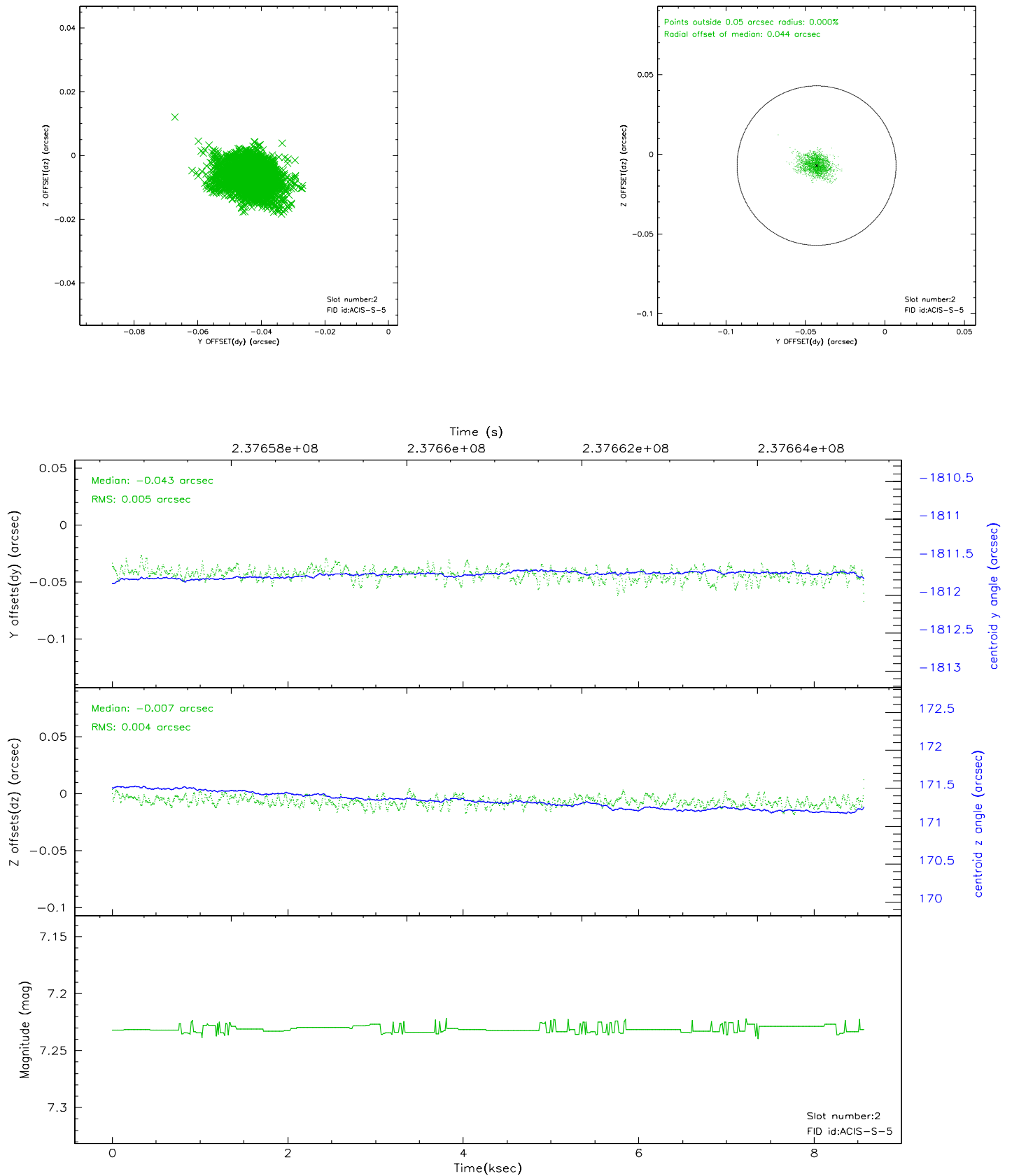
### 2.5.1 Slot 0



## 2.5.2 Slot 1

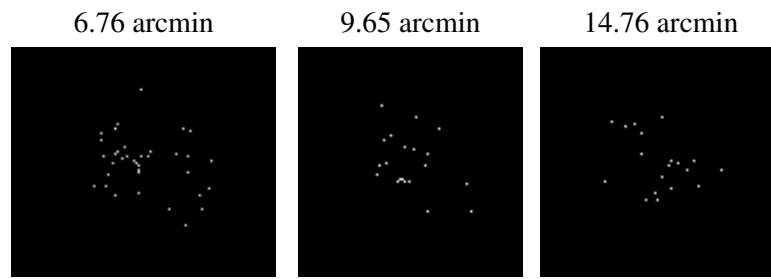


### 2.5.3 Slot 2





### 3 Point Sources



# A Summary

## A.1 Status

V&V Scientist	Jen Lauer
V&V Date (YYYY-MM-DD)	2006.03.14
V&V Edition	1
V&V Disposition and Status	OK
V&V Charge Time	8.287999

## A.2 Comments

Comments for Obi 1

Star in slot 4 has an RMS deviation > 0.200000 arcsec

Within aspect spec.

Window constraint not met.

The ACIS focal plane temperature was above the calibration limits for the entire observation.